

1982



FORD ESCORT

LOOK OUT WORLD
HERE COMES FORD



FORD ESCORT FOR 1982

A Brand-New World Car.

Introducing a new dimension of America's popular front-wheel-drive Escort. The 1982 4-Door Hatchback. In this special World Car you'll find distinctive hatchback style and versatility plus the convenience for families that a 4-door provides.

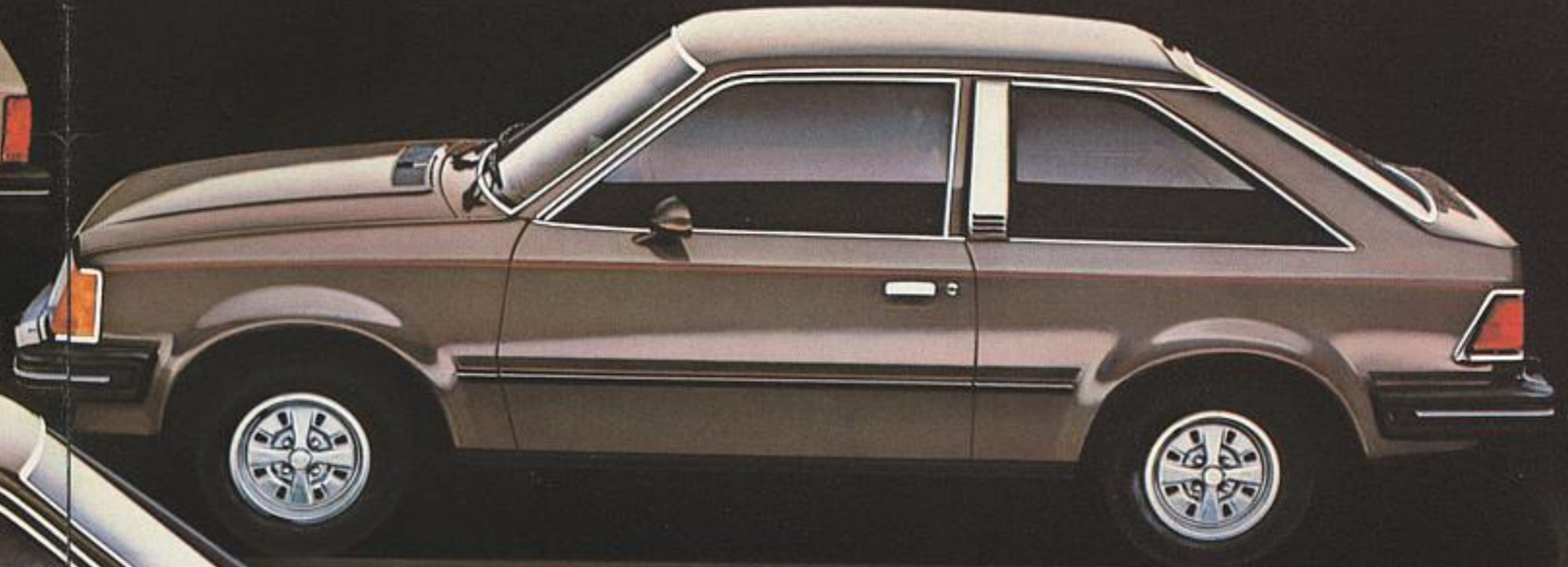
Escort, in its first year, outsold every import car line in America.* And no wonder. It's designed to

seat four adults comfortably. With the only American-built four-wheel independent suspension in its class, Escort is smooth over rough roads. With the power-efficient CVH engine, Escort has mileage ratings comparable to many other cars that are not as spacious.**

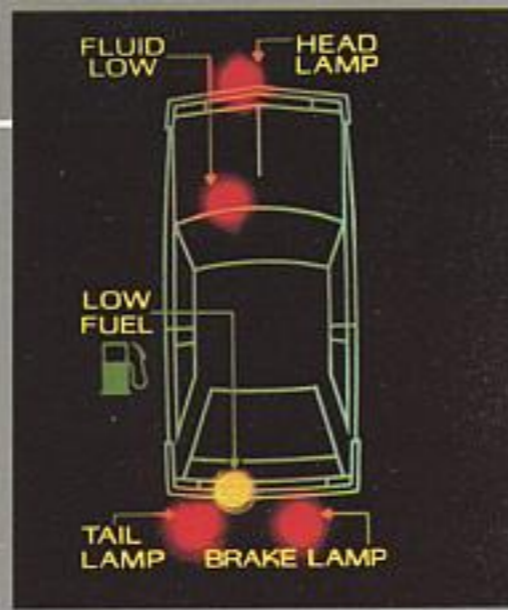
Feel how pleasurable Escort brings it all together in a test drive at your Ford Dealer. Whatever your needs, there's a World Car from Ford for you. The all-new 4-Door Hatchback. Sharp-looking 2-Door Hatchback. Spacious 4-Door Wagon.

*Based on 1981 retail deliveries.
**See projected Ford Division mileage estimates on page 21.

Front to rear: Escort GLX 4-Door Hatchback in Tu-Tone Dark Pewter over Light Pewter (also shown on front/back covers); Escort GLX 2-Door Hatchback in Dark Pewter; Escort GLX 4-Door Wagon in Light Pewter.



FORD ESCORT GLX INTERIOR



Clockwise: Graphic display warning module indicates low fuel, low washer fluid, and when outside lamps need replacement. Electronic digital clock with elapsed time/date readouts. Reclining low-back bucket seats in Medium Red cloth and vinyl.



FORD ESCORT GLX SERIES

Right: Escort GLX
4-Door Hatchback in
Medium Blue Metallic.

Center: Standard
console with graphic
display warning module.

Far Right: GLX interior
in Black cloth and vinyl.

Below: Escort GLX
2-Door Hatchback in
Medium Yellow.



FORD ESCORT GL SERIES

Right: Escort GL 2-Door Hatchback in Bright Red.

Center: Bucket seats recline to 15 positions.

Far Right: Optional low-back bucket seats in Medium Red cloth and vinyl.

Below: Escort GL 4-Door Hatchback in Bright Blue Metallic.



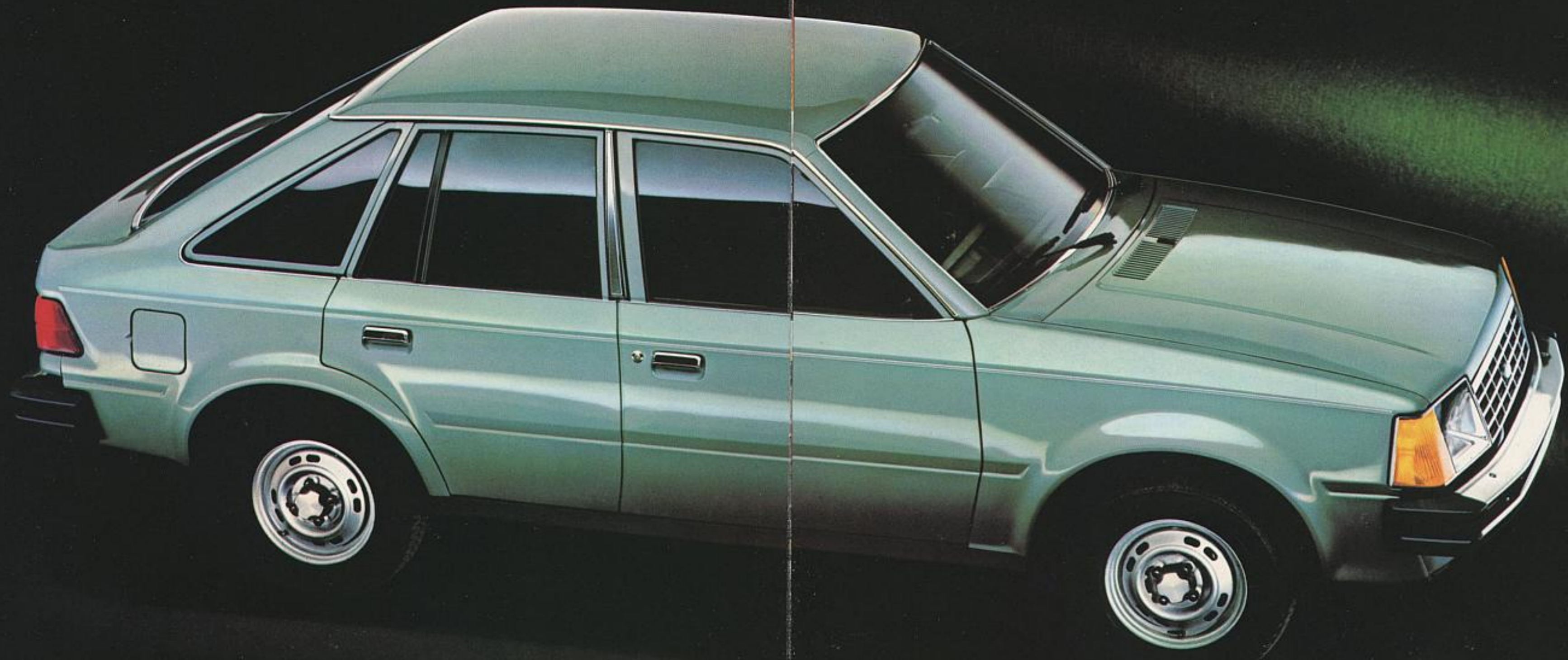
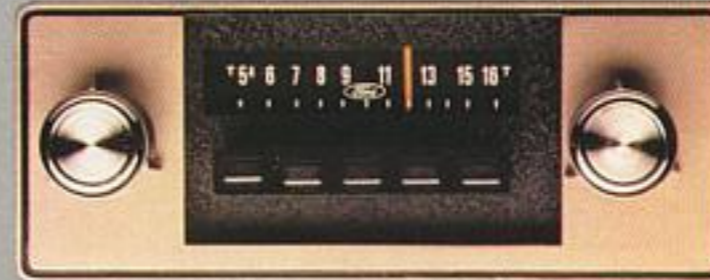
FORD ESCORT L SERIES

Right: Escort L 2-Door Hatchback in Medium Blue Metallic.

Center: Standard AM radio (may be deleted for credit).

Far Right: Standard Escort high-back bucket seats in Black vinyl.

Below: Escort L 4-Door Hatchback in Light Spruce Glow.



FORD ESCORT GT SERIES

Right: Instrumentation Group standard. Tachometer, trip odometer and temperature gauge.

Below: Escort GT 2-Door Hatchback in Bright Red.



Left: Optional reclining low-back bucket seats available in shearling with genuine leather bolsters—a new Escort feature for 1982.



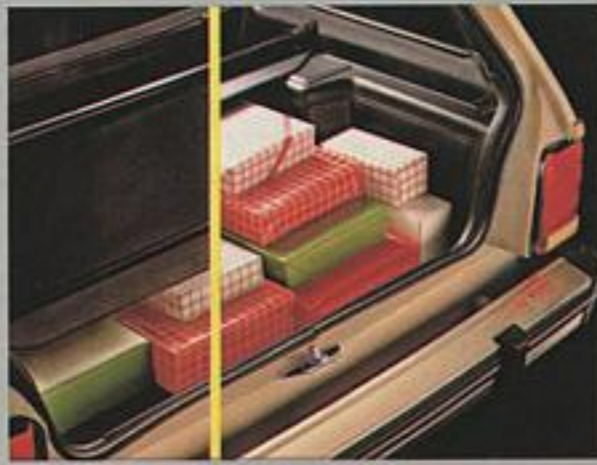
FORD ESCORT 4-DOOR WAGON

Right: Removable cargo cover standard.

Center: Spacious cargo area — 58.3 cu. ft. with rear seat down.

Far Right: Escort GL 4-Door Wagon in Red.

Below: Escort GLX 4-Door Wagon in Fawn with Squire Option.



THIS IS FORD ESCORT FOR 1982.

Right: Escort GLX 2-Door Hatchback (shown on pages 6-7).

Right Center: Escort GL 4-Door Hatchback (shown on pages 8-9).



Left Center: Escort GT 2-Door Hatchback (shown on pages 12-13).

Left: Escort GLX 4-Door Wagon with Squire Option (shown on pages 14-15).

The World Car that brings It all together.

"World Car" invites high expectations. Great gas mileage certainly. And Escort delivers: 44 est. hwy., [28] EPA est. mpg.* Efficient use of interior space for roominess and comfort. Exterior lines smartly styled and aerodynamically designed. Plus more model series and body styles than you would expect.

The front-wheel drive Escort takes on the world again with a wider selection in 1982 than in its very successful first year. There's the all-new 4-door hatchback, versatility plus added convenience for families. The stylish 2-door hatchback. The roomy 4-door wagon, too, with lots of space for loads of cargo. And from Escort's range of models you'll find the World Car from Ford that's equipped just right for you.

ESCORT L SERIES Solid value that challenges comparison.

Escort L's specialty is solid, down-to-earth value. It has been the top seller in the Ford World Car lineup that has so successfully taken on the imports.

This practical car has all the advanced technology that makes Escort a true World Car. Sure-footed front-wheel drive traction and all-season P-metric radials can pull you through all kinds of rough weather. Four-wheel independent suspension system provides a smooth ride you wouldn't expect in a car of Escort's size. The power-efficient 1.6 liter CVH engine and 4-speed manual transaxle with 4th gear overdrive make Escort one of the highest mileage cars in its class.

Value is evident in other features as well. The bucket seats, for instance, with cushion height and seat back angle scientifically body-contoured for comfort. Length of the seat track is over 7 inches for comfortable legroom. Inertia seat back releases in the 2-door hatchback are an added convenience for passengers entering or leaving the rear compartment.

The standard package also includes halogen headlamps that emit a whiter, brighter light than conventional tungsten lamps. An AM radio, too (may be deleted for credit). Controls on two column-mounted levers for fingertip convenience. Deluxe sound insulation package. These are but a few of the many great features you'll find in the Notable Standard Features chart on page 20.

ESCORT GL SERIES The Intermediate step — and easy to take.

What will strike you first about this World Car is its clean good looks. GL boasts a package of attractive extras, many of which are options on other cars. Like the protective bodyside moldings with vinyl inserts. Bumper rub strips and end caps. The bright window frames and accent striping as well.

GL's interior is handsomely finished. Reclining high-back bucket seats come in vinyl or optional cloth and vinyl. The door trim panels have softly padded vinyl inserts and bright accent moldings. The steering wheel is the deluxe 4-spoke design with soft-feel rim. There are other thoughtful features in Escort GL you'll appreciate. The handy console keeps travel items

like sunglasses within easy reach. GL has dual visor vanity mirrors. A rear seat ashtray, too. The color-keyed deluxe belts have special comfort regulators for freedom of movement.

Escort GL for 1982 — this version of Ford's World Car may be just what you've been looking for. A high-mileage car that goes a long way in style and convenience.

ESCORT GLX SERIES Top-of-the-line World Car luxury.

Here you have the pride of Ford's World Car family. Escort GLX, in every detail an attractive automobile. With bright molding treatment all around, dual color-keyed remote control sport mirrors, styled steel wheels with bright trim rings, and full deluxe bumper protection.

But inside is where GLX's luxury appeal really stands out. Fully reclining low-back bucket seats come in your choice of cloth and vinyl or all-vinyl upholstery. Or choose elegant shearling with genuine leather bolsters—a new option this year—for the ultimate in Escort seating comfort.

Along with GLX's many other amenities — rich carpeting throughout, luxury door trim and the like — you'll find a whole range of special conveniences. The console, for example, equipped with graphic display warning module that signals "low fuel," "low washer fluid", and indicates when headlamps, parking lamps or taillamps need replacement. The electronic digital clock has elapsed time and date readouts. The entire Light Group option is standard —

glove box, ashtray and engine compartment lights, pivoting header-mounted map light, liftgate courtesy light switch, plus headlamps-on warning buzzer.

The interval windshield wiper system, a feature in addition to the 2-speed constant-sweep wipers, can be adjusted to variable weather conditions like light rain or mist. A button in the glove box activates the electric liftgate release, standard in the 2-door and 4-door hatchbacks. There are other nice items, too, like the roof-mounted grab handle for the front seat passenger and ashtrays for rear seat passengers.

A compact car with all the luxury comforts and conveniences you could ask for — this is Escort GLX.

ESCORT GT SERIES A very special kind of World Car.

Escort GT. A roomy 4-seater 2-door hatchback that has the personal flair of a sport coupe. GT has all the World Car attributes of every other Escort, of course, yet is a standout on its own.

If you're a sporty car enthusiast, you'll want to put the GT through its paces. And you should, in a test drive. The optional handling suspension package is a GT standard. Escort's sophisticated four-wheel independent suspension system is equipped with an upsized front stabilizer bar, heavy-duty shock valving and stiffer spring rates. Try this exciting handling-tuned suspension with

precise-response rack and pinion steering and the sporty 4-speed manual stick. Escort GT is ready for the test.

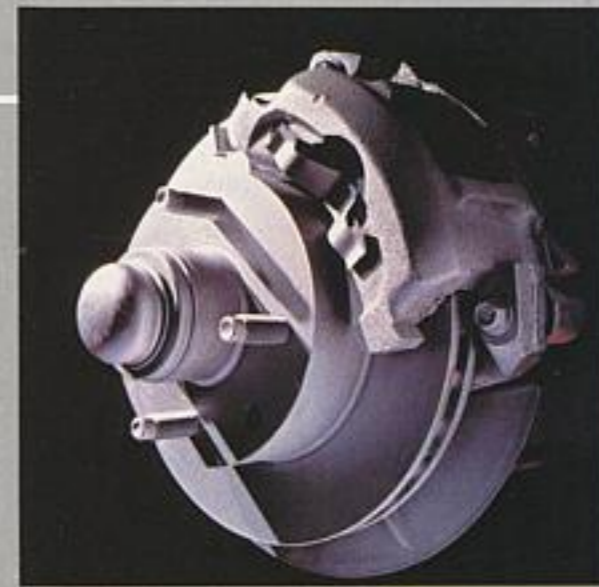
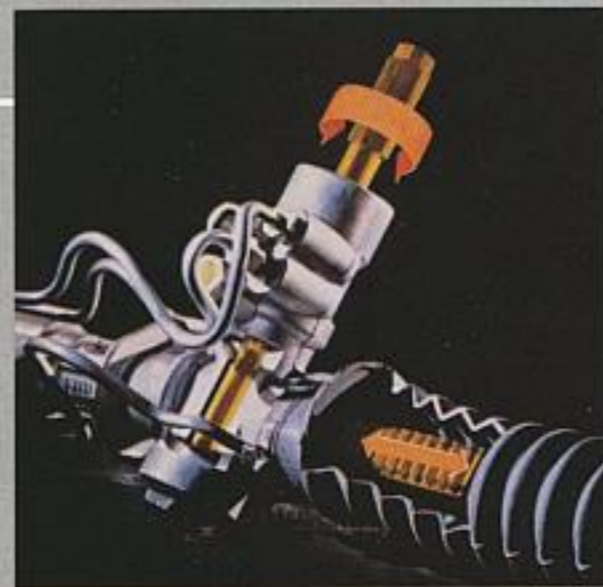
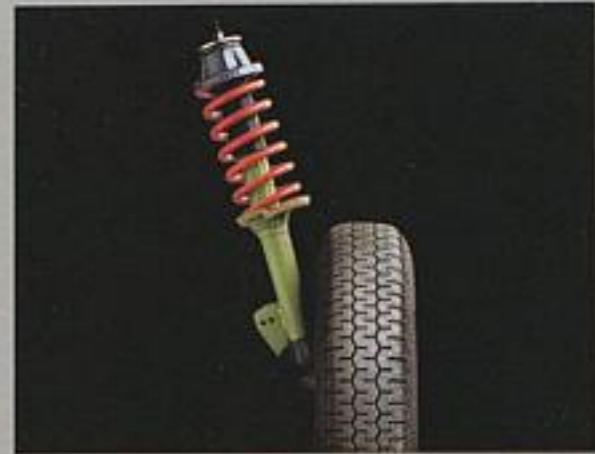
Among GT's other great features are reclining high-back bucket seats. Console with graphic display warning module. Tachometer that reads the rpm pulse of the 1.6 liter CVH engine, plus temperature gauge and convenient trip odometer.

Then there's the exciting GT look that says it all. The bold blackout exterior treatment. The GT tape striping and decals. Dual black remote control sport mirrors. Styled steel wheels with bright trim rings. Escort GT has everything it takes to make any trip an experience of fun-filled driving pleasure.

*Projected Ford Division estimates for comparison. Your mileage may differ depending on speed, distance and weather. Actual highway mileage will probably be lower. See your Ford Dealer for his 1982 EPA Gas Mileage Guide.



FORD ESCORT—A CLOSER LOOK.



From its inception on the drawing boards, Escort was designed to be a model for future automotive designs. And Ford's worldwide resources were behind the effort from the start. This is the essence of the World Car story: How technical expertise here in America and overseas created a roomy, high-mileage car with advanced technology to take on the world — and did it.

FRONT-WHEEL DRIVE

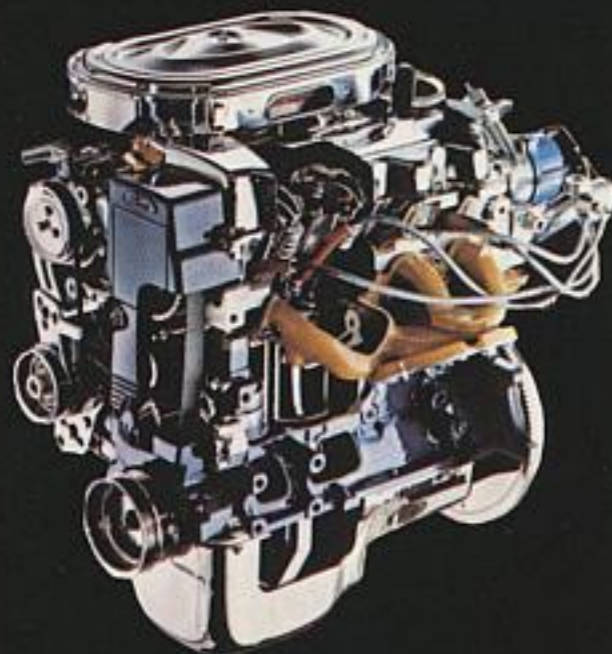
In a front-wheel drive car, transmission and axle are in a compact unit called the transaxle. The weight of the engine and transaxle is up front over the driving wheels, resulting in better all-around traction. There are other benefits as well. With the conventional driveshaft removed, there's more room in the passenger compartment — plus a significant weight reduction which contributes to fuel economy.

1.6 LITER CVH ENGINE

Vast material resources and human energy went into the development of Escort's engine. One facet of the research program involved an extensive comparative study of 25 American, European and Japanese-built engines.

The power-efficiency of the 1.6 liter compound-valve hemispherical-head (CVH) engine results from three basic design features. (1) The "squish" effect

of hemispherical (half-round) heads and sculptured piston crowns, forcing the fuel/air mixture to the center of the combustion chamber for more complete burning. (2) Intake and exhaust valves angled in two planes (i.e., compound valve) to maximize their size, permitting a free air flow.



(3) Central spark plug location creating a direct power charge for efficient combustion.

Escort's power-efficient CVH engine delivers outstanding fuel economy: 44 est. hwy. and [28] EPA est. mpg.*

MANUAL TRANSAXLE

The standard 4-speed manual transaxle is a major reason for Escort's high mileage. Its overdrive 4th gear (similar to 5th gear overdrive in other transmissions) provides outstanding economy at cruising speeds. Other notable features: Closed-end case construction to prevent oil leaks. Single-rail shift mechanism requiring no adjustment. Low viscosity transmission fluid to improve shift feel, especially in cold weather.

AUTOMATIC TRANSAXLE

The optional 3-speed automatic transaxle has a "split-torque" feature for fuel economy. There is no other American-built automatic transmission quite like it. In all automatics, some power is lost to hydraulic slippage in the torque converter. For Escort, Ford engineers devised a way to reduce this inherent inefficiency. In second and third gears, a patented splitter gear transmits most of the torque mechanically instead of hydraulically. Going from second to third gear, for instance, the split is 93% mechanical and only 7% hydraulic. Reducing power waste in this way results in improved fuel efficiency.

AERODYNAMICS

As a vehicle travels at cruising speeds, air resistance creates added work for the engine. And working harder naturally requires more energy. Ford designers devoted considerable time to dealing with this problem while shaping Escort. More than 1,000 hours, in fact, were committed to wind tunnel testing of scale models and full-size prototypes in America and Europe. And numerous refinements were made in such areas as the edge of the hood and decklid, parking lamps, grille opening, valance panel, "A" and "B" pillars. Escort, with its low air drag coefficient, is as aerodynamic as some leading sports cars.

HIGH-STRENGTH STEEL

Escort's construction incorporates a variety of modern materials designed to reduce weight and conserve fuel. High-strength steel is one of them. It is lighter than ordinary steel and, pound for pound, stronger.

FOUR-WHEEL INDEPENDENT SUSPENSION

This sophisticated system is a major example of Escort's advanced technology. It is available on no other American-built car in Escort's class (excluding other Ford Motor Company cars).

Up front is the MacPherson strut suspension with stabilizer bar and "zero scrub" geometry among its many features designed for efficient handling.

The independent rear suspension (IRS) was recommended by Ford engineers who know a great deal about suspensions in small European cars and the narrow, tightly curved roads on which they're driven. With IRS, there's no rear axle. Each wheel absorbs bumps and jolts individually, to make Escort's ride surprisingly smooth.

STEERING, BRAKES, TIRES

Escort features rack and pinion steering — a system that provides a more direct linkage between the steering wheel and front wheels for precise response.

Front disc brakes, tested on mountain passes in Germany and Austria, feature Ford's pin slider caliper mounts designed to reduce brake drag.

Tires are all-season P-metric steel-belted radials with European wraparound tread design for traction. P-metric radials have high inflation pressure and low rolling resistance tread compounds which contribute to Escort's high fuel economy.

SPACE-EFFICIENT DESIGN

Escort hatchback models are classified as "compacts" because of their exceptional roominess. EPA volume index of the 2-door and new 4-door Escorts is 102 cubic feet. That's more space than in many other popular hatchbacks. The 4-door wagon has 114 total cubic feet, making it an excellent alternative to less fuel-efficient wagons.

Escort's space-efficient interior is the product of Ford's international design expertise. There's surprising head and leg room — plus a wide, high windshield and large side and rear windows. Front-wheel drive provides a flatter floor for more room. And the independent rear suspension system, having no rear axle, allows the rear seat to be placed farther back and the cargo floor to be lowered for easier loading and unloading.

*Projected Ford Division estimates for comparison. Your mileage may differ depending on speed, distance and weather. Actual highway mileage will probably be lower. See your Ford Dealer for his 1982 EPA Gas Mileage Guide.

FORD ESCORT OPTIONS SELECTOR



Escort options give you the opportunity to equip your World Car to your personal specifications. Options add not only to the appearance, comfort and convenience of your new car, but to its overall value as well.

Entertainment Systems

- AM/FM Monaural Radio
- AM/FM Stereo Radio with Dual Front and Rear Speakers
- AM/FM Stereo Radio with Cassette Tape Player and Dual Front and Rear Speakers (A)
- AM/FM Stereo Radio with 8-Track Tape Player and Dual Front and Rear Speakers
- Premium Sound System.* Power amplifier and upgraded rear speakers.
- Dual Rear Speakers. For monaural radios.

Appearance

- Deluxe Seat Belts (with comfort regulators). Standard in GL, GLX, GT.
- Dual Remote Control Sport Mirrors. Standard on GLX, GT.
- Glow Paint.* Light Spruce or Medium Fawn.
- Tu-Tone Paint/Tape Treatment*
- Squire Wagon Option. Woodtone vinyl side panels and rails, brown bodyside moldings with black inserts, deluxe luggage rack. For GL and GLX wagons only.

Comfort

- Air Conditioner (B). Tinted glass recommended.
- Tinted Glass — Complete
- Flip-Up Open Air Roof* (C)
- Remote Control Quarter Windows (2-door)
- Pivoting Front Vent Windows
- Reclining Front Seat Backs (high-back buckets). Standard in GL, GT.

- Reclining Low-Back Bucket Seats. Standard in GLX.

Escort Interiors

- **Escort L.** High-back bucket seats in vinyl standard; cloth/vinyl trim optional. Reclining seat backs available. Reclining low-back bucket seats in cloth/vinyl available.
- **Escort GL/GT.** Reclining high-back bucket seats in vinyl standard; cloth/vinyl trim optional. Reclining low-back bucket seats available in vinyl, cloth/vinyl, or new shearling/leather.
- **Escort GLX.** Reclining low-back bucket seats in vinyl or cloth/vinyl standard. New shearling/leather available.

Convenience

- Fingertip Speed Control (D)
- Console. Features graphic display warning module that signals "low fuel," "low washer fluid" and indicates when headlamps, parking lamps or taillamps are out. Standard in GLX, GT.
- Roof Air Deflector (4-door wagon)
- Electric Rear Window Defroster (E)
- Rear Window Wiper/Washer (E)
- Instrumentation Group. Tachometer, trip odometer, temperature gauge. Standard in GT.
- Electronic Digital Clock. Standard in GLX.
- Remote Control Liftgate Release (hatchbacks). Standard in GLX.

- Light Group (F). Glove box, ashtray, engine compartment, pivoting dome/map light (shown), liftgate courtesy light switch, headlamps-on warning buzzer. Standard in GLX.



stabilizer bar, heavy-duty shocks, stiffer spring rates front and rear. Includes styled steel wheels on Escort L, GL. Standard in GT.

- Interval Windshield Wipers. Standard in GLX.
 - Deluxe Luggage Rack (G). Four Seasons bike and ski attachments available at your Ford Dealer.
- ## Performance
- Split-Torque Automatic Transaxle
 - Sport Close Ratio Manual Transaxle. See your Ford Dealer for availability.
 - Higher Axle Ratio
 - Heavy-Duty Battery
 - Handling Suspension. Larger front

- High Altitude Emissions System*
 - California Emissions System*
- ## Power Assists
- Power Steering
 - Power Front Disc Brakes. Standard on 4-door wagon.

Protection

- Appearance Protection Group. Door edge guards, color-keyed front floor mats, rear license plate frame, glove box lock.
- Front Bumper Guards. Standard on GLX.
- Rear Bumper Guards. Standard on GLX.
- Front and Rear Bumper Rub Strips. Standard on GL, GLX, GT.
- Vinyl Insert Bodyside Moldings. Standard on GL, GLX.
- Lower Bodyside Protection. Vinyl coating under the paint along the lower bodysides to protect against stone pecking and road salt.

Tires/Wheels

- Tires: P165/B0R 13" WSW
- Bright Wheel Trim Rings (H). Standard on GL, GLX, GT.
- Cast Aluminum Wheels (I)

Also well worth considering...



Ford Motor Company's Extended Service Plan. This option covers major components on new Ford cars and light trucks for longer than the vehicle's basic warranty. The Extended Service Plan's cost is so moderate for the protection you get that it could pay for itself the first time you need it. Your Ford Dealer will be happy to detail the Plan for you. It is available on all Ford cars and light trucks sold and normally operated in all 50 United States and Canada.



Options Availability

1982 Escort options are not confined to these pages but are shown throughout the catalog. Options, whether or not they are identified, are offered at extra cost. Options designated by an asterisk (*) are offered either in combination with other options, or are subject to additional ordering requirements or limitations. Availability of some features described here and elsewhere may be subject to delay.



GO FOR A TEST DRIVE IN A 1982 FORD ESCORT.

Buy or lease the new Escort today.



FORD ESCORT

FORD DIVISION

