

WINDSTAR

CONTENTS

OUR EARTH AND COMMUNITY  
PERSONAL SAFETY SYSTEM  
WINDSTAR  
INTERIOR FEATURES  
COMFORT AND CONVENIENCE  
PERFORMANCE FEATURES  
SAFETY/SECURITY FEATURES  
MODEL AVAILABILITY  
COLORS  
COLOR AND TRIM  
SPECIFICATIONS  
FORD CREDIT



# OUR EARTH AND COMMUNITY



When it comes to zipping around this great big world, we have our little wants and needs along the way. Whether it's another more convenient cupholder or a more expansive truck bed, we at Ford are forever conscious of what people desire. But, of course, what we all want most is a cleaner, safer world. So that's one of the first things we think about with every decision we make – from the sites where we build, to the type of paint we use. It's that "hey, we live here, too" thinking that points to a better future for all of us.



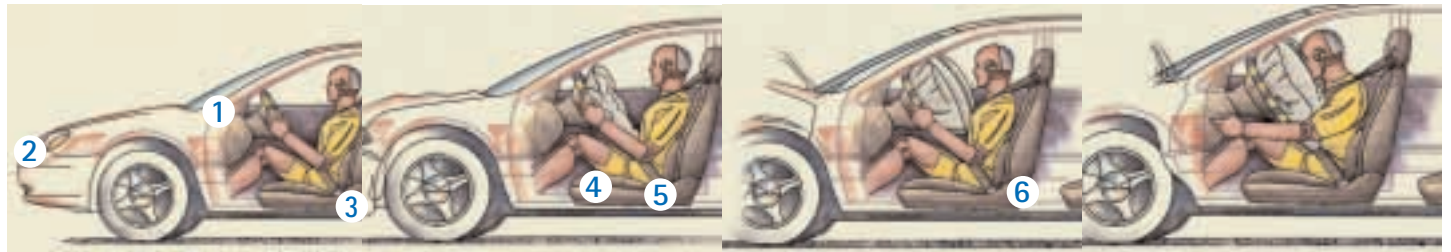
We're a pretty big company with a whole lot of amazing people. But we realize this isn't "Ford World." Or the "United States of Ford." We're just a part of a much larger community. But we want to make a difference. That's why we support a vast array of worthy causes. And we encourage our employees to be active in their own neighborhoods as well. At the end of every day, it's not about cars and trucks ... it's about people.



# PERSONAL SAFETY SYSTEM



It's only natural. We all like to feel safe. We base a lot of life's decisions on the safest places to live and work ... and drive. And when we're responsible for someone else, safety is top of mind. That's true of everyone who works at Ford. After all, we drive, too. Our families drive. And never, never do we forget the millions of Ford customers who put their trust in us. It's a commitment you can sense when you sit behind the wheel. And it's a commitment that is officially recognized, too, with some of our vehicles earning the U.S. government's 5-star crash test rating.



## Six Technologies Designed For Your Comprehensive Protection

Everywhere you look – and even where you can't – you'll find truly life-saving features on our vehicles. In a front crash, for instance, dual stage airbags **1** are properly deployed with the help of crash severity sensors **2** that determine how much energy is needed to deploy the airbags, depending on the severity of the impact. Safety belt pretensioners **3** act quickly to remove slack in the belts to ensure the occupant is held securely in his seated position. The driver's seat position sensor **4** relays data to the airbag's computer on how far away the driver is seated from the steering wheel. The safety belt usage sensors **5** determine if the driver and outboard front passenger are belted. This information helps select the inflation rate and timing of the airbags. If a severe accident occurs, safety belt energy management retractors **6** limit the belt forces to a predetermined maximum and then "hand-off" to the deploying airbag. In an accident, this electronic coordination is carried out in a split second. Actually quicker. All in all, the Personal Safety System™ is one of the most sophisticated vehicle safety systems available today.

Please remember to always wear your safety belt and secure children in the rear seats.



# WINDSTAR

WE TAKE OUR FAMILY RESPONSIBILITIES WAY BEYOND YOUR DRIVEWAY.



It's all the little things, really, that create such a strong bond among family members. It's no different with Windstar. It is designed to meet your needs. It's accommodating. It's responsive. It will spoil you with its amenities. And it strives to provide a safe environment. Others notice, too. Windstar is the only vehicle to receive the prestigious quadruple 5-star government crash test rating three years in a row. We know how much your family means to you.



Windstar Limited shown in Estate Green/Mineral Grey two-tone.

# WINDSTAR

## INTERIOR FEATURES



INSIDE EVERY WINDSTAR YOU'LL HEAR THINGS LIKE, "HEY...HOW'D THEY THINK OF THAT?" AND "THAT'S REALLY COOL."



Windstar Limited interior, shown in Medium Parchment, with AutoVision® Video Entertainment System.



(a)



(b)



(c)

What's cool? How about the AutoVision® Video Entertainment System (a) option? It'll work magic to keep the longest trips complaint-free. Or opt for the available 6-disc in-dash CD player (b). And since it'll now be abnormally quiet back there, you'll want the optional conversation mirror (c). It's handy when keeping tabs on the crew is a must. Now, that's cool.



# WINDSTAR

## COMFORT AND CONVENIENCE

WE HAVE KIDS. YOU HAVE KIDS. THAT'S WHY WINDSTAR'S INTERIOR IS KID FRIENDLY WITH HIGH ENTERTAINMENT VALUE. DEFINITELY "G" RATED.



Windstar's available dual power sliding doors give families a couple convenient ways to get in and out of any situation (a). Available power mirrors with integrated safety signals alert traffic behind when sliding doors are open. So, even when your kids aren't watching out, Windstar is (b). Also available, a soft light that emanates from the floor...not into a sleeping baby's face (c). Every Windstar also comes with built-in "LATCH" child safety seat lower tether anchors to better secure your precious cargo (d), and at the push of a button, Windstar Limited remembers the placement for the power seat, pedals and mirror settings for two drivers and resets them accordingly (e). The optional remote keyless entry system is as handy as it gets. Hands full? Push the button and the power sliding doors will automatically open or close (f).



Windstar SE cloth interior, shown in Medium Graphite, featuring quad bucket seats and the optional AutoVision® Video Entertainment System.

# WINDSTAR

## PERFORMANCE FEATURES



Above is the sequential port injected 3.8L V6 with 200 hp and 240 lb.-ft. of torque. It is designed to take your family five times around the earth before its first scheduled tune-up.\* Quickly, we might add.



Flexible interior space has long been the hallmark of Windstar's success. Sometimes you need all the room just for people. A few minutes later, you need all the room for cargo. Knowing this, Windstar offers seats that flip and fold or come out as easily as they go in. It's not magic. It's just smart.



15" Steel Wheel with cover standard on LX Base and LX Standard

16" 5-Spoke Machined Aluminum Wheel standard on LX Deluxe

16" Painted Aluminum Wheel standard on SE and SEL

16" 10-Spoke Brushed Aluminum Wheel standard on Limited

\*Under normal driving conditions with regular fluid and filter changes.

# WINDSTAR

## SAFETY/SECURITY FEATURES

Standard on Windstar is our Personal Safety System™. This system, along with pre-designated crush zones and one-piece body construction, has helped Windstar earn the U.S. Government's coveted Best-in-Class quadruple ☆ ☆ ☆ ☆ ☆ crash test rating. For more details on the Personal Safety System, please refer to the Personal Safety System page.



The Low Tire Pressure Warning System is an ingenious feature that alerts the driver to tire pressure loss.



The security and convenience of the optional reverse sensing system alerts you to certain objects near the rear of the vehicle with a series of beeps and helps you gauge your distance.

Optional heated mirrors keep ice and snow from obscuring your view. They also have a built-in turn signal to help tell the world where you are headed.

The optional keyless entry keypad comes in mighty handy when you've locked your keys inside with Rover (who just never seems to be much help in this kind of situation). Enter your code...and you're in.



**Standard Windstar Features Include:**

**MECHANICAL**

- 3.8L SPI V6 Engine
- 4-Speed Automatic Transmission w/Full Electronic Controls and Overdrive Lockout
- Anti-Lock Braking System (ABS)
- Power front disc/rear drum brakes
- Power Rack and Pinion Steering
- Front Stabilizer Bar
- Stainless Steel Exhaust
- Fuel Tank – 26-gallon
- Fuel System Inertia Shutoff Switch
- Ultra Low Emissions Vehicle (ULEV)
- Front Suspension – Independent MacPherson Strut
- Rear Suspension – Torsion Beam w/Coil Springs
- Gas Shocks, Front & Rear

**SAFETY**

- Personal Safety System
  - Dual Stage Airbags, Driver & Front Passenger\*
  - Crash Severity Sensor
  - Seat Belt Usage Sensors
  - Driver Seat Position Sensor
  - Safety Belt Pretensioners
  - Safety Belt Energy Management Retractors
- Child Safety Seat Lower Tether Anchors "LATCH"
- Child Safety Door Locks on Sliding Side Doors
- SecuriLock™ – Passive Anti-Theft System
- Brake/Shift Interlock
- Low Tire Pressure Warning System

**INTERIOR**

- 7-Passenger Seating
  - 1st-Row High-Back Bucket Seats, 2nd-Row Bench (2), 3rd-Row Bench (3)
- Air Conditioning
- Instrumentation – Incl. Low Fuel Level, Fuel Cap Off Indicator, Low Oil Pressure, Low Washer Fluid, Brake Warning, Anti-Lock Brake/Charging System & High Beam Indicator Lights, Fuel/Temp Gauges, Tachometer and ABS Tire Warning
- Autolock (Doors Lock When Vehicle Is Shifted Into "Drive")
- Power Door Locks
- Power Front and Rear Windows
- Accessory Delay for Power Features
- 3 Power Points – 12-volt
- Floor Mats

**EXTERIOR**

- Solar Tinted Glass
- Dual Sliding Side Doors
- Power Mirrors
- Rear Window Defroster
- Mini-Spare
- Windshield Wipers – Front/Rear Intermittent w/Washer

WINDSTAR

MODEL AVAILABILITY

Knowing all the unique differences between the Windstar models and levels of trim content will help you select just the right vehicle for you and your family.



LX



SE

**BASE**

Includes standard features, plus:  
 15" Steel Wheel w/Covers (4)  
 P215/70R15 All-Season BSW Tires (4)  
 Bodyside Moldings  
 AM/FM Stereo with Digital Clock  
 Visor/Vanity Mirrors

**Options:**  
 Side Airbags\*  
 LX Value Group (AM/FM Stereo/ Cassette, Privacy Glass)

**STANDARD**

Includes standard features of LX Base, plus:  
 Body-Color Bumpers  
 Driving Lamps  
 Remote Keyless Entry System  
 AM/FM Stereo/Cassette with Digital Clock  
 Privacy Glass  
 Adjustable Roof Rack  
 Full Overhead Console with Conversation Mirror  
 Enhanced Seating Group (incl. Tilt/Slide Seats, Map Pockets, Assist Handles)  
 Tilt Steering Wheel  
 Speed Control  
 Light/Visibility Group

**Options:**  
 Side Airbags\*  
 1st-Row Floor Console  
 Quad Bucket Seats  
 High-Back Front; Low-Back Rear

**DELUXE**

Shown above includes standard features of LX Standard, plus:  
 16" Machined-Aluminum Wheels (4)  
 P225/60R16 All-Season BSW Tires (4)  
 Power Adjustable Pedals  
 Power Driver's Seat  
 1st-Row Floor Console

**Options:**  
 Side Airbags\*  
 Family Security Group I (incl. Traction Control, Perimeter Anti-Theft, 16" Self-Sealing Tires)  
 Quad Bucket Seats – 1st- and 2nd-Row Low-Back  
 AutoVision® Video Entertainment System

Includes standard features of LX Deluxe,\*\* plus:  
 Chrome Grille and Fascia Inserts  
 16" Painted Aluminum Wheels  
 P215/65R16 All-Season BSW Tires (4)  
 Keyless Entry Keypad – Illuminated  
 Cornering Lamps  
 Power Mirrors with Integrated Safety Signals – Heated  
 Rear Seat Audio Controls  
 Quad Bucket Seats – 1st- and 2nd-Row Low-Back  
 Leather-Wrapped Steering Wheel  
 Bodyside Molding – Color-Keyed w/Bright Insert  
 Door Handles – Color-Keyed  
 Storage Nets – Interior  
 Center Storage Bin Cover  
 Illuminated Visor Mirrors  
 High-Capacity Auxiliary Climate Control System w/adjustable temperature, fan and rear seat controls

**Options:**  
 Side Airbags\*  
 Family Security Group II (incl. Traction Control, Perimeter Anti-Theft, 16" Self-Sealing Tires, Reverse Sensing System)  
 6-disc In-Dash CD Player  
 Floor Console  
 AutoVision® Video Entertainment System  
 Power Sliding Side Doors – Driver and Passenger  
 Electronics Group (incl. Message Center, Electrochromic Rearview Mirror, Automatic Headlamps, Homelink®)

\*Always wear your safety belt and secure children in the rear seat. \*\*Excluding 1st-row floor console.

# WINDSTAR

## MODEL AVAILABILITY



### SEL

**Includes standard features of SE, plus:**  
 P225/60R16 All-Season BSW Tires (4)  
 Two-Tone Lower Bodyside Cladding  
 Power Front Passenger Seat  
 Electronics Group (incl. Message Center, Electrochromic Rearview Mirror, Automatic Headlamps, Homelink®)  
 Leather-Trimmed Seats  
 Power Sliding Side Doors – Driver and Passenger  
 1st-Row Floor Console  
 Heavy-Duty Battery

**Options:**  
 Side Airbags\*  
 Family Security Group II (incl. Traction Control, Perimeter Anti-Theft, 16" Self-Sealing Tires, Reverse Sensing System)  
 Trailer Tow Package (incl. Full-Size Spare, Trailer Tow Wiring, Heavy-Duty Battery, Auxiliary Transmission Cooler, High Temperature Pkg.)  
 AutoVision® Video Entertainment System  
 6-Disc In-Dash CD Player



### LIMITED

**Includes standard features of SEL, plus:**  
 16" 10-Spoke Brushed Aluminum Wheels (4)  
 P215/65R16 Self-Sealing Tires (4)  
 AM/FM Stereo 6-Disc In-Dash CD Player  
 Side Airbags\*  
 Family Security Group II (incl. Traction Control, Perimeter Anti-Theft, Reverse Sensing System)  
 Trailer Tow Package (incl. Full-Size Spare, Trailer Tow Wiring, Heavy-Duty Battery, Auxiliary Transmission Cooler, High Temperature Pkg.)  
 Luxury Floor Mats  
 Heated Driver and Front Passenger Seats  
 Memory Settings for Power Driver's Seat, Adjustable Pedals and Side View Mirrors  
 Chrome Exterior Door Handles  
 Chrome Interior Trim  
 Wood and Leather-Wrapped Steering Wheel  
 Premium Two-Tone Leather-Trimmed Seats

**Option:**  
 AutoVision® Video Entertainment System

\*Always wear your safety belt and secure children in the rear seat.

Following publication of the catalog, certain changes in standard equipment, options and the like, or product delays, may have occurred which would not be included in these pages. Your Ford Dealer is the best source for up-to-date information. Ford Division reserves the right to change product specifications at any time without incurring obligations.

# WINDSTAR

## COLORS



WINDSTAR SEL IN  
TRUE BLUE



WINDSTAR SE IN  
VIBRANT WHITE



WINDSTAR SEL IN  
SPRUCE GREEN



WINDSTAR LX IN  
LIGHT SAPPHIRE BLUE



WINDSTAR LIMITED IN  
BLACK



WINDSTAR SEL IN  
AMAZON GREEN



WINDSTAR SE IN  
MATADOR RED



WINDSTAR LX DELUXE IN  
SILVER FROST



WINDSTAR SE IN  
LIGHT PARCHMENT GOLD



WINDSTAR LIMITED IN  
ESTATE GREEN

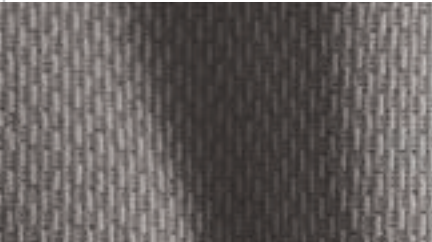
Windstar features Clearcoat paint for beauty and protection. Colors shown are representative only. See your dealer for actual paint/trim choices. Vehicles shown may contain optional equipment.

# WINDSTAR

## COLOR AND TRIM



Medium Graphite Leather



Medium Graphite Cloth



Medium Parchment Leather



Medium Parchment Cloth

Exterior Paint Color	Interior Fabric Color	Medium Graphite	Medium Parchment
<b>LX BASE</b>			
Light Sapphire Blue Clearcoat Metallic		•	
Amazon Green Clearcoat Metallic		•	
Silver Frost Clearcoat Metallic		•	
Vibrant White Clearcoat		•	
<b>LX</b>			
Light Parchment Gold Clearcoat Metallic			•
Matador Red Clearcoat Metallic		•	
Spruce Green Clearcoat Metallic			•
Light Sapphire Blue Clearcoat Metallic		•	
Amazon Green Clearcoat Metallic		•	
Silver Frost Clearcoat Metallic		•	
Vibrant White Clearcoat		•	
<b>SE</b>			
Light Parchment Gold Clearcoat Metallic			•
Spruce Green Clearcoat Metallic			•
True Blue Clearcoat Metallic		•	•
Light Sapphire Blue Clearcoat Metallic		•	
Matador Red Clearcoat Metallic		•	•
Amazon Green Clearcoat Metallic		•	•
Black Clearcoat		•	•
Vibrant White Clearcoat		•	•
<b>SEL (TWO-TONE)</b>			
Matador Red Clearcoat Metallic/Light Parchment Gold Clearcoat Metallic			•
Spruce Green Clearcoat Metallic/Light Parchment Gold Clearcoat Metallic			•
True Blue Clearcoat Metallic/Light Parchment Gold Clearcoat Metallic			•
Light Sapphire Blue Clearcoat Metallic/Silver Frost Clearcoat Metallic		•	
Amazon Green Clearcoat Metallic/Light Parchment Gold Clearcoat Metallic			•
Estate Green Clearcoat Metallic/Mineral Grey Clearcoat Metallic			•
Black Clearcoat/Silver Frost Clearcoat Metallic		•	
Black Clearcoat/Light Parchment Gold Clearcoat Metallic			•
Vibrant White Clearcoat/Light Parchment Gold Clearcoat Metallic			•
<b>LIMITED (TWO-TONE)</b>			
Light Parchment Gold Clearcoat Metallic/Mineral Grey Clearcoat Metallic			•
Estate Green Clearcoat Metallic/Mineral Grey Clearcoat Metallic			•
Black Clearcoat/Mineral Grey Clearcoat Metallic			•

Windstar features Clearcoat paint for beauty and protection. Colors shown are representative only. See your dealer for actual paint/trim choices.



# WINDSTAR

## SPECIFICATIONS

	ENGINE			EXTERIOR DIMENSIONS			
AVAILABILITY	ENGINE TYPE	HORSEPOWER @ RPM	TORQUE @ RPM	LENGTH	WIDTH	CURB HEIGHT	WHEELBASE
Standard	3.8L SEFI V6	200 @ 4900	240 @ 3600	201.5"	75.5"	65.2"	120.7"

	INTERIOR DIMENSIONS			CAPACITY AND CAPABILITY		
	HEAD ROOM	LEG ROOM Front/2nd-Row	SEATING Maximum	CARGO REAR OF ROW Maximum	MAXIMUM TOWING When Properly Equipped	FUEL CAPACITY Gallons
	39.3"	40.7 / 36.8"	7	1st 136.4 cu. ft. 2nd 76.3 cu. ft. 3rd 29.1 cu. ft.	3500 lbs.	26

## Ford Credit's Red Carpet Lease

Many lease managers have completed many hours of training in a Red Carpet Lease program designed to make us the best in the business. We think you'll find a Red Carpet Lease is the best way to lease.

To get details on various financing options available on your new Ford vehicle, please visit our website at [www.fordcredit.com](http://www.fordcredit.com). Doing so can give you a head start before talking to your Ford Dealer about financing your new Ford vehicle.

Under the New Vehicle Limited Warranty, you'll receive bumper-to-bumper no-deductible coverage on your new Ford vehicle for 3 years/36,000 miles. You'll also receive unlimited-mileage, no-deductible corrosion perforation coverage for five years. Ask your Ford Dealer for a copy of this warranty.

During its 3-year/36,000-mile limited warranty period, every new Ford vehicle includes the assurance and support of a 24-hour emergency Roadside Assistance program. Roadside Assistance includes such services as fuel delivery, tire changes, jump starts, and help when you are locked out of your vehicle. Ask your Ford Dealer for complete details about this program.

