

WWW.HILLERFORD.COM



FREESTAR
Built for the road ahead.



HILLER FORD

HERE IS THE INFORMATION YOU REQUESTED.

AVAILABLE INCENTIVES ON FORD FREESTAR

Listed below are just a few of the current available Ford vehicle offers and incentives in your area. For details on these and other great offers, contact your Ford dealer directly.

2005 RETAIL OFFERS FOR ZIP CODE: 53132													
OFFER DATES/VALUE	COMBINABLE CASH OFFERS		-OR-	CASH COMBINED WITH APR OFFERS				-OR-	APR ONLY OFFERS				
VALID DATES: OFFER VALUE:	CASH BACK*	FORD CREDIT BONUS CASH**		FORD CREDIT BONUS CASH**	SPECIAL FINANCING RATES					SPECIAL FINANCING RATES ONLY			
					36 mo.	48 mo.	60 mo.	72 mo.		36 mo.	48 mo.	60 mo.	72 mo.
Freestar													
Valid Dates:	04/05-06/30	04/05-05/31	-OR-	04/05-05/31	04/05-06/30				-OR-	04/05-06/30			
Offer Value:	\$3000	\$1000		\$1000	3.9%	4.9%	5.9%			0.9%	1.9%	2.9%	4.9%

2005 LEASE OFFERS FOR ZIP CODE: 53132			
APPLICABLE MODEL	OFFER DATES/VALUE	COMBINABLE CASH OFFERS	
MODEL NAME	VALID DATES: OFFER VALUE:	RCL CASH*†	FORD CREDIT BONUS CASH**
Freestar	Valid Dates: Offer Value:	04/05-06/30 \$3000	04/05-05/31 \$1000

* Not all buyers will qualify for Ford Credit financing. Please use the chart below to determine the monthly charge per \$1000 financed regardless of down payment. National incentives are effective on retail deliveries from dealer stock through May 31, 2005 but subject to change. A combined customer cash reduced financing rate option is available on most models. Regional programs may vary.

† Not all lessees qualify for Ford Credit RCL. Some payments higher, some lower. Residency restrictions apply. Take new retail delivery from dealer stock by May 31, 2005.

** Take new retail delivery from dealer stock by May 31, 2005. See dealer for complete details.

*** When financed through Ford Credit. Not all buyers will qualify for Ford Credit financing. Take new retail delivery from dealer stock by May 31, 2005. See dealer for qualifications and complete details. Ford Credit Bonus Cash is compatible with Ford Credit Financing Offer.

LIFE ADAPTER.

Every day, something new comes up. (It's practically a guarantee.) So you need a vehicle that adapts as quickly as your needs change. Enter the 2005 Ford Freestar. Its third row can fold flat into the floor (head restraints and all) or reverse into a rear-facing bench* for camping trips, a little tailgating – you name it. While available second-row captain's chairs fold and tumble so easily, they can be moved with one hand. Need more cargo room? Then fold the third row flat and remove those seats in the second row with a simple lift of a lever. What you'll get is an unbelievable 134 cu. ft. for loading just about anything. So whether you're watching the second half or cashing in at a garage sale, Freestar is designed to work with you at every step.



*3rd-row Tailgate Bench Seat™ is not intended for passenger seating while vehicle is in motion.



1. Available leather trim is not the only feature that invites you in. There's a convenient in-dash storage compartment. Your choice of a single CD player or optional 6-disc in-dash CD changer. And tri-zone climate control to keep everyone comfortable.
2. Controlled by a button on the key fob or on the overhead console, this available power liftgate makes things easier when your hands are full.
3. Best-in-class front-door storage system with two dual-bin storage pockets in each front door comes standard on all Freestar models.
4. Groceries have met their match with this extra-deep third-row cargo well. There are even hooks for added assurance that nothing gets out of the bag.
5. The available Rear Seat DVD Entertainment System comes with a 7" color LCD screen (that folds neatly into the headliner when not in use), two wireless headphones and a remote control.



LEAVE YOUR EXPECTATIONS AT THE SLIDING DOOR.

When you get into a Freestar, you'll appreciate the big stuff first. The flexible interior. The multitude of places to stow and tuck your belongings. But the more you get in it, the more you'll find that the little extras make a big impact too. Like the available Reverse Sensing System that uses ultrasonic sensors to detect objects behind the vehicle. (The closer you get, the quicker the alert tone beeps.) Or the available power adjustable pedals that make it easy to find the most comfortable driving position for your height. Or a conversation mirror that lets you see what's going on behind you in the back seats without turning around. But it doesn't end there. Get to know Freestar and you're sure to find something else that will make your driving experience even easier.

FORD FREESTAR MODEL LINEUP

FREESTAR S



Ideal for families on a budget.

- 3.9L split-port induction (SPI) V6 engine
- 3rd-row Tailgate Bench Seat™
- Air conditioning, manual
- 4-wheel anti-lock brakes

Price: **\$24,595***

EPA: +

+ 18 city/23 highway**

FREESTAR SE



Strong accent on value.

- AM/FM stereo with single CD
- Speed control
- Privacy Glass in 2nd and 3rd rows and liftgate
- Enhanced Seating Group: map pockets and grab handles (1st-row seats), cupholders (2nd-row seat), plus easy entry fore/aft adjust on 2nd-row seat

Price: **\$27,195***

EPA: +

+ 18 city/23 highway**

FREESTAR SES



Sport appearance plus.

- Dual zone air conditioning – manual auxiliary
- 6-way power driver's seat with manual lumbar support
- 16" 5-spoke painted sport aluminum wheels

Price: **\$28,695***

EPA: +

+ 18 city/23 highway**

FREESTAR SEL



Outstanding power and versatility.

- 4.2L split-port induction (SPI) V6 engine
- 2nd-row fold-and-tumble bucket chairs
- Leather-wrapped steering wheel with audio controls
- Low-back, cloth bucket front seats
- Leather-wrapped steering wheel and white oak grain center panel

Price: **\$29,695***

EPA: +

+ 18 city/23 highway**

FREESTAR LIMITED



Ultimate in Freestar luxury.

- Leather seating surfaces: 1st-row low-back seats and 2nd-row low-back fold-and-tumble adjustable bucket seats
- Air conditioning – Electronic Automatic Temperature Control
- Power outside heated mirrors with integrated turn signals and puddle lamps
- Power side sliding doors
- Wood and leather-wrapped steering wheel and white oak grain center panel

Price: **\$33,420***

EPA: +

+ 18 city/23 highway**

* Starting Manufacturing Retail Price, excluding taxes, title, and registration fees. Optional equipment not included.

**EPA estimated city/highway mpg based on base engine/transmission configuration.

FORD FREESTAR VS. HONDA ODYSSEY

Want to see Freestar breeze past the other minivans? Then opt for its 4.2L V6 engine. Not only is it the largest engine available in a minivan, it also gives Freestar best-in-class torque (263 lb.-ft.@3,650 rpm). Take a look and see how it stacks up against Honda Odyssey in other areas. Then experience the real thing with a test-drive. And for even more comparisons, visit www.fordvehicles.com.

SPECIFICATIONS	2005 Ford Freestar Wagon SEL 4.2L V6	2004 Honda Odyssey EX 5-Spd. AT 3.5L V6
Engine Name	4.2L V6	3.5L V6
Torque (lb.-ft.)	263	250
Fuel Capacity (gal.)	26	21
Signaling Exterior Mirrors	Optional	Not Available
Self-Sealing/Run-Flat Tires	Optional	Not Available
Leather Seats	Optional	Standard
Leather Steering Wheel	Standard	Optional
Side Head Curtain Airbags	Optional	Standard
Passenger Six-Way Power Seat	Optional	Not Available
Compass	Standard	Optional
Outside Temperature Display	Standard	Standard
Power Trunk Lid	Optional	Not Available
DVD Player	Optional	Standard
In-Glass Radio Antenna	Standard	Standard
Cornering Lights	Standard	Not Available
Tire Inflation/Pressure Monitor	Standard	Not Available
Adjustable Foot Pedals	Optional	Not Available
Electronic Parking Aid	Optional	Standard
Towing Prep. Package	Optional	Optional
Exterior Rails	Standard	Standard



© Automotive Information Center™ August 2004. All Rights Reserved. This information is supplied for personal use only and may not be used for any commercial purpose whatsoever without the express written consent of Automotive Information Center. Automotive Information Center™ makes no guarantee or warranty, either express or implied, including without limitation any warranty of accuracy, merchantability, or fitness for particular purpose, with respect to the data presented here.



BUILDING A TRADITION OF SAFETY.

It starts with the available Safety Canopy™ System. This patented feature uses a sensor to anticipate a rollover situation – deploying side curtain airbags* that protect all three rows of seating. Deployed from the headliner on both sides, these airbags also stay inflated longer than others. And as a result, are among the best types of protection a minivan could offer.

Add to that the standard Personal Safety System™ With 12 safety sensors in all, it can constantly monitor vehicle movement. Data collected is sent to a central computer, and in case of an accident, works in conjunction with the Occupant Sensing System. This system, in turn, tells the computer if the front seats are occupied, as well as how far the driver is from the steering wheel. The computer then responds appropriately by activating safety belt pretensioners and dual-stage airbags that deploy at two different speeds.

And finally, there's the available AdvanceTrac® Electronic Stability Enhancement System. Using advanced sensors, this system can monitor driving input and vehicle responses. So, in certain understeer or oversteer situations, it can make braking and throttle adjustments to help correct vehicle direction.**

*Always wear your safety belt and secure children in the rear seat.

**While AdvanceTrac® can help you control your vehicle, it cannot overcome the laws of physics. Drivers are responsible for safe vehicle speed and operation.



FEATURED FREESTAR SPECIFICATIONS

INTERIOR FEATURES - SEATING	S	SE	SES	SEL	Limited
Seven-passenger seating	S	S	S	S	S
Front seating: dual front high-back cloth buckets with adjustable seat tracks, integral head restraints and recliners	S	S	S	-	-
Front seating: dual front low-back cloth buckets with adjustable seat tracks, head restraints and recliners	-	-	-	S	-
Front seating: low-back leather-trimmed buckets with adjustable seat tracks, head restraints and recliners	-	-	-	O	S
2nd row bench seat (Not Available with M Limited leather seating surfaces delete option)	-	-	-	O	O
Rear seating: 2nd-row 2-passenger cloth bench witheasy entry feature and child seat presenter in SE/SES; 3rd-row fold-in-floor 3-passenger cloth bench	S	S	S	O	O
Rear Seating: 2nd-row clotheasy entry low-back captain's chairs, fold and tumble; 3rd-row fold-in-floor 3-passenger cloth bench	-	O	O	S	-
Rear seating: 2nd-row leather-trimmed low-back captain's chairs, fold and tumble; 3rd-row vinyl 3-passenger fold-in-floor bench	-	-	-	O	S
Enhanced Seating Group: seat-mounted cupholders on 2nd-row seats, plus map pockets and grab handles on 1st-row seatbacks	-	S	S	S	S
6-way power driver's seat	-	O	S	S	S
6-way power passenger seat (requires leather trim)	-	-	-	O	O
INTERIOR FEATURES - CLIMATE CONTROL	S	SE	SES	SEL	Limited
Air conditioning, manual front	S	S	S	S	-
Air conditioning, high capacity tri-zone climate control systemwith driver/passenger and rear controls	O	O	S	S	-
Electronic automatic tri-zone temperature control system	-	-	-	-	S
INTERIOR FEATURES - ENTERTAINMENT SYSTEMS	S	SE	SES	SEL	Limited
AM/FM stereo, digital clock and four speakers	S	-	-	-	-
AM/FM stereo, digital clock and single CD player	-	S	S	-	-
AM/FM stereo, digital clock, cassette player and single CD player (including rear seat audio controls)	-	O	O	S	-
AM/FM stereo, cassette player and single CD player with automatic speed sensitive volume control (including rear seat audio controls)	-	-	-	-	S
AM/FM stereo, digital clock and CDX6 player	-	-	-	O	-
AM/FM stereo and CDX6 player	-	-	-	-	O
DVD Entertainment System: Ceiling-mounted screen and player, wireless headphones, rear seat audio controls. (Requires Climate Control option)	-	O	O	O	O
INTERIOR FEATURES - COMFORT AND CONVENIENCE	S	SE	SES	SEL	Limited
Tilt steering column	S	S	S	S	S
Rear window intermittent wiper/washer	S	S	S	S	S
Rear window defroster	S	S	S	S	S
Front intermittent wipers/washer	S	S	S	S	S

Speed control with buttons on steering wheel	-	S	S	S	S
Steering wheel, vinyl	S	S	S	-	-
White oak grain center panel cluster and gauges with chrome trim	-	-	-	S	S
Wood/leather steering wheel with audio controls	-	-	-	-	S
Steering wheel, leather-wrapped with audio controls	-	-	-	S	-
Standard gauges: temperature, fuel and tachometer	S	S	S	S	S
Low tire pressure warning	S	S	S	S	S
Message center with fuel economy/range and service status	-	-	-	-	S
Digital clock in radio	S	S	S	S	-
Analog clock in instrument panel	-	-	-	-	S
Day/night rearview mirror, manual	S	S	S	-	-
Power outside mirrors	S	S	S	S	-
Power outside heated signal mirrors with puddle lamps	-	-	-	-	S
Power outside heated signal mirrors with puddle lamps and memory feature (included in Memory Package)	-	-	-	-	O
Vanity mirrors	S	S	S	-	-
Vanity mirrors, illuminated	-	-	-	S	S
Full overhead console: conversation mirror, reading/dome lamps, provision for power sliding door switches, plus temperature/compass displays (Electronics Group)	-	O	O	S	S
First row floor console	-	O	O	O	O
Up to nine cupholders(number varies by series)	S	S	S	S	S
Door panel compartments	S	S	S	S	S
In-dash storage compartment	S	S	S	S	S
Rear cargo net	-	O	O	O	S
Cargo Management System (covered, inserts into cargo area, collapsible)	O	O	O	O	O
Roof rails (without crossbars)	-	S	S	S	S
12 volt powerpoints in front row, 2nd-row, and cargo area	S	S	S	S	S
Power windows with one-touch down driver's side feature and power third row flip open side windows	S	S	S	S	S
Power door locks with illuminated switches (front doors), autolocks (all doors)	S	S	S	S	S
Manual side sliding doors	S	S	S	S	-
Power side sliding doors	-	-	-	O	S
Dome and rear cargo lamp	S	S	S	S	S
Front door courtesy lamps and front row map lights	-	-	S	S	S
Light Group: 2nd-row reading lamps, front row foot lamps, B-pillar lamps and sleeping baby mode	-	S	S	S	S
3rd-row reading lamps	-	-	-	-	S
Floor mats, front and rear	S	S	S	S	S
Value Group I: perimeter anti-theft system and power adjustable pedals	-	-	O	-	-
Value Group II: perimeter anti-theft system, power adjustable pedals, auto-dimming electrochromic rearview mirror, power outside heated signal mirrors with puddle lamps, and message center with fuel economy/range and service status	-	-	-	O	-
Value Group III: Homelink® garage door opener and perimeter anti-theft system, auto-dimming electrochromic rearview mirror	-	-	-	-	O

Electronics Group: auto headlamps, electrochromic (auto-dimming) rearview mirror, overhead console with temperature and compass displays; plus message center with fuel economy/range and service status (Limited)	-	O	O	-	-
Memory Package: power exterior mirrors, power adjustable pedals, and power driver seat	-	-	-	-	O
Smoker's Package: cigarette lighter and ash cup	O	O	O	O	O

EXTERIOR FEATURES - APPEARANCE	S	SE	SES	SEL	Limited
Clearcoat paint	S	S	S	S	S
Bumpers, painted body color	S	S	-	S	-
Bumpers, painted body color upper and black lower	-	-	S	-	-
Bumpers, painted contrasting color	-	-	-	-	S
Headlamps, automatic (included in Electronics Group)	-	O	O	S	S
Driving lamps	-	-	S	-	-
Cornering lamps	-	-	-	S	S
Liftgate spoiler	-	-	O	-	-

EXTERIOR FEATURES - PROTECTION	S	SE	SES	SEL	Limited
Bodyside moldings, grey	S	S	-	-	-
Bodyside lower, black	-	-	S	-	-
Bodyside moldings, body color	-	-	S	S	-
Cladding, two-tone color	-	-	-	-	S

EXTERIOR FEATURES - WINDOWS AND GLASS	S	SE	SES	SEL	Limited
Solar tinted flush-mounted glass all around	S	S	S	S	S
Privacy glass in second and third rows and liftgate	O	S	S	S	S

POWER AND HANDLING - POWER	S	SE	SES	SEL	Limited
3.9L SPI V6 and electronic 4-speed automatic overdrive transmission with overdrive lockout	S	S	S	-	-
4.2L SPI V6 and electronic 4-speed automatic overdrive transmission with overdrive lockout	-	-	-	S	S
Sequential electronic fuel injection, multiple port	S	S	S	S	S
Engine controls (EEC-V)	S	S	S	S	S
Fuel tank: 26-gallon	S	S	S	S	S
Front wheel drive	S	S	S	S	S

POWER AND HANDLING - HANDLING	S	SE	SES	SEL	Limited
Independent MacPherson struts with nitrogen gas-pressurized hydraulic shocks and stabilizer bar	S	S	S	S	S
Torsion beam with coil springs and nitrogen gas-pressurized hydraulic shocks	S	S	S	S	S
Class I Trailer Tow Package. Mini-spare, trailer tow wiring	-	O	O	O	O
Class II Trailer Tow Package. Mini-spare, trailer tow wiring, high-speed/ambient temperature package, P235 tires, heavy duty battery	-	O	O	O	O

POWER AND HANDLING - WHEELS AND TIRES	S	SE	SES	SEL	Limited
Wheel covers with steel wheels, 16-inch (4)	S	S	-	-	-

Wheels, 16" 5-spoke painted aluminum sport (4)	-	-	S	-	-
Wheels, 16" 5-spoke painted aluminum (4)	-	-	-	S	-
Wheels, 16" 5-spoke bright machined aluminum (4)	-	-	-	-	S
Wheels, 17-inch Alloy (4)	-	-	O	O	O
P225/60Rx16 BSW all-season tires (4)	S	S	-	-	-
P235/60Rx16 BSW all-season tires (4)	-	-	S	S	S
Self-sealing tires	-	O	O	O	O
Mini spare tire	S	S	S	S	S

SAFETY AND SECURITY - SAFETY	S	SE	SES	SEL	Limited
Personal Safety System™: restraints control module, safety belt pretensioners, driver's seat position sensor, dual-stage front airbags, front safety belt usage sensors, energy management retractors, front crash test severity sensors†	S	S	S	S	S
Front and second row manual 3-point lap/shoulder safety belts with D-ring height adjusters, third row 3-point lap/shoulder belts for all three positions.	S	S	S	S	S
Safety Canopy™, including side impact airbags	O	O	O	O	O
Side door intrusion beams	S	S	S	S	S
Child safety sliding side door locks	S	S	S	S	S
LATCH (Lower Anchors and Tethers for Children)	S	S	S	S	S
Four-wheel disc anti-lock brake system	S	S	S	S	S
Active Safety Package I: panic brake assist, traction control	-	O	O	-	-
Active Safety Package II: panic brake assist, traction control, Reverse Sensing System	-	-	-	O	O

SAFETY AND SECURITY - SECURITY	S	SE	SES	SEL	Limited
SecuriLock™* Passive Anti-Theft System	S	S	S	S	S
Perimeter anti-theft system (included in Value Groups I, II and III)	-	-	O	O	O
Remote keyless entry with illuminated entry	S	S	S	S	S
Driver door keypad	-	-	-	S	S

S = Standard O = Optional - = Unavailable

Ford Division reserves the right to change product specifications at any time without incurring obligations.

† Always wear your safety belt and secure children in the rear seat.

DEALER ACCESSORIES

Your local Ford Dealer has just the right car for you, plus a host of accessories to tailor it perfectly to your needs.



Remote Start

You can use remote start to turn on the ignition, lock and unlock the doors or activate the panic alarm from up to 500 feet away.



Second-row Center Console

A second-row center console will come in handy when you need extra storage. It includes pockets in the lid big enough to hold two notebooks and some pens, with a large bin underneath for all the extras.



Mobile-ease Hands-free Communication System

This Mobile-Ease hands-free communication system allows you to place and receive calls without added distraction. Works with your Bluetooth®-equipped cell phone using the audio system.

WHY FORD CREDIT?

At Ford Credit, auto financing is our specialty. Whether you purchase or opt for a Red Carpet Lease, we offer a range of terms and features that make your experience hassle-free. Contact your local Ford Dealer or visit us on the Web at www.fordcredit.com.



ROADSIDE ASSISTANCE

Every new Ford includes the assurance of a 24-hour emergency Roadside Assistance Program provided during the 3-year/36,000-mile limited warranty period. Ask your Ford Dealer for complete details on this program, which includes such services as fuel delivery, tire change, jump start, or even help when you're locked out of your vehicle.

NEW VEHICLE LIMITED WARRANTY

Under the New Vehicle Limited Warranty, you receive bumper-to-bumper coverage for 3 years/36,000 miles with no deductible. You also receive corrosion perforation coverage for five years with unlimited mileage and no deductible. Ask your Ford Dealer for a copy of the warranty.

COLOR OPTIONS & WHEEL STYLES



16" Steel Wheel
with Full Wheel Cover



16" Painted Aluminum
5-Spoke Sport Wheel



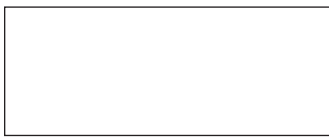
16" Painted Aluminum
5-Spoke Wheel



16" Bright Machined
Aluminum 5-Spoke Wheel



17" Aluminum Alloy Wheels
(Late Availability)



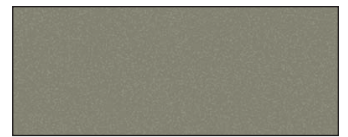
Oxford White



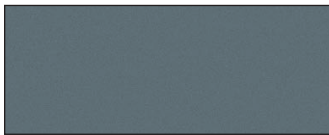
Arizona Beige Metallic



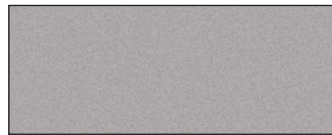
Matador Red Metallic



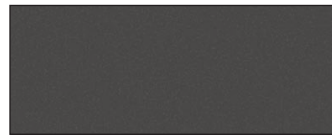
Spruce Green Metallic



Medium Steel Blue Metallic



Silver Birch Metallic



Dark Shadow Grey Metallic



Black

HELPFUL FORD LINKS

Now that you've learned more about this Ford vehicle, we would like to recommend the following links that can help you get all the information you need about finding, purchasing and owning the Ford that's just right for you:



BUILT FOR THE ROAD AHEAD.

[Fordvehicles.com](#) - The best place to get information about Ford cars, trucks, and SUVs.

[Get a Price Quote](#) - Request a quick price quote from a Ford Dealer in your area.

[Competitive Comparisons](#) - Get a detailed comparison of your favorite Ford vehicle and how it stacks up against the competition.

[Payment Calculator](#) - Find out how much you'll have to spend on your new vehicle with Ford Credit's Payment Estimator.

[Build & Price Your Ford](#) - Build and price your vehicle online - From performance to interior colors and everything in between.

[Search Dealer Inventory](#) - Find your vehicle at a Dealer near you.

[Locate a Dealer](#) - Our dealer locator lets you view your Ford dealer's services, hours, special promotions, and check new and used inventory.

[Incentives & Financing](#) - Keep up to date with current incentives and financing offers in your area.

[Schedule a Test Drive](#) - Sign up online to drive a next generation of Ford vehicle at a dealership near you.

[Certified Pre-Owned](#) - Ford Quality Checked Certified Pre-Owned Dealers - For pre-owned vehicles with Ford confidence!

[Ford Accessories Store](#) - These great accessories can make your Ford vehicle truly unique.

[Ford Credit](#) - Ford Credit online vehicle financing offers the tools you need to aid in your purchase decision including a Payment Estimator and instant credit approval

[My Ford](#) - The Official Website for Ford Vehicle Owners. Personalized maintenance schedules, exclusive offers & incentives, your service expense log and much more!

Disclaimer

Competitive comparisons based on publicly available information and Ford certification data at time of brochure creation. Some features discussed may be optional. Vehicles shown may contain optional equipment. Features shown may be offered only in combination with other options or subject to additional ordering requirements or limitations. Following creation of the brochure, certain changes in standard equipment, options and the like or product delays, may have occurred which would not be included in these pages. Your Ford Dealer is the best source for up-to-date information. Ford Division reserves the right to change product specifications at any time without incurring obligations.