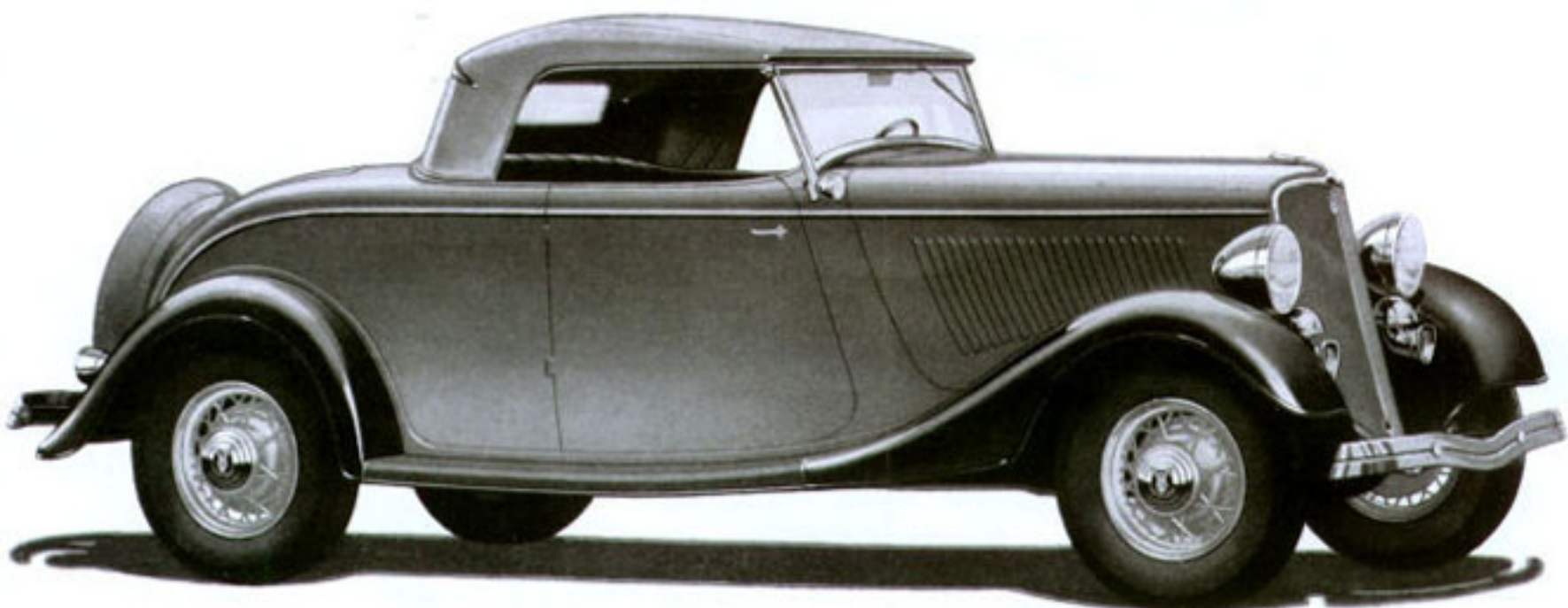
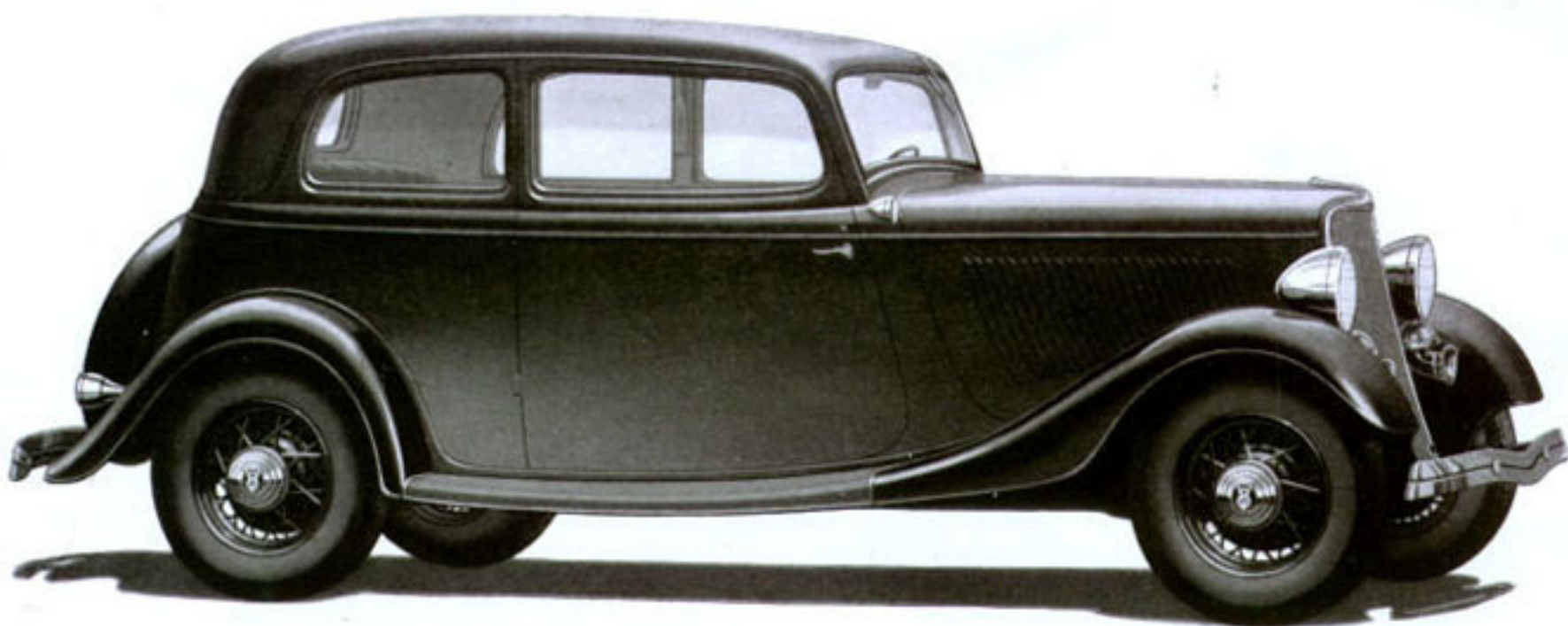


The New Ford V-8

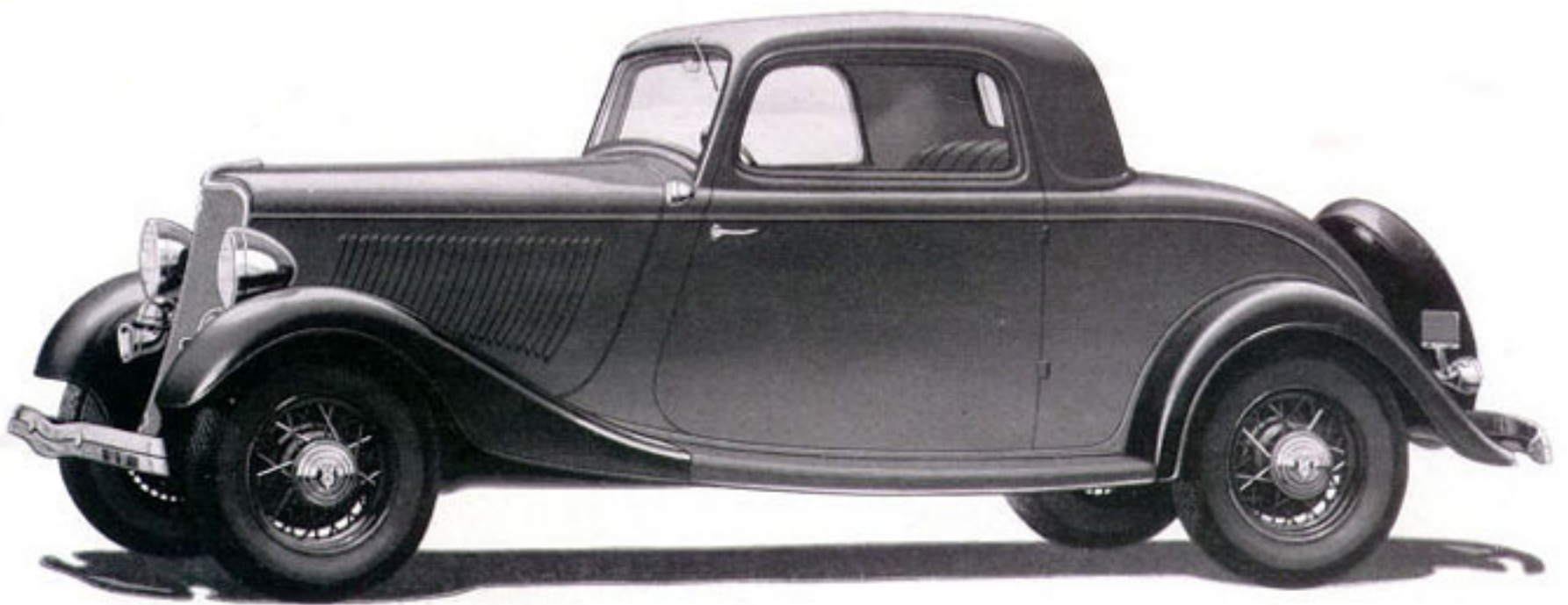
112-INCH
WHEELBASE



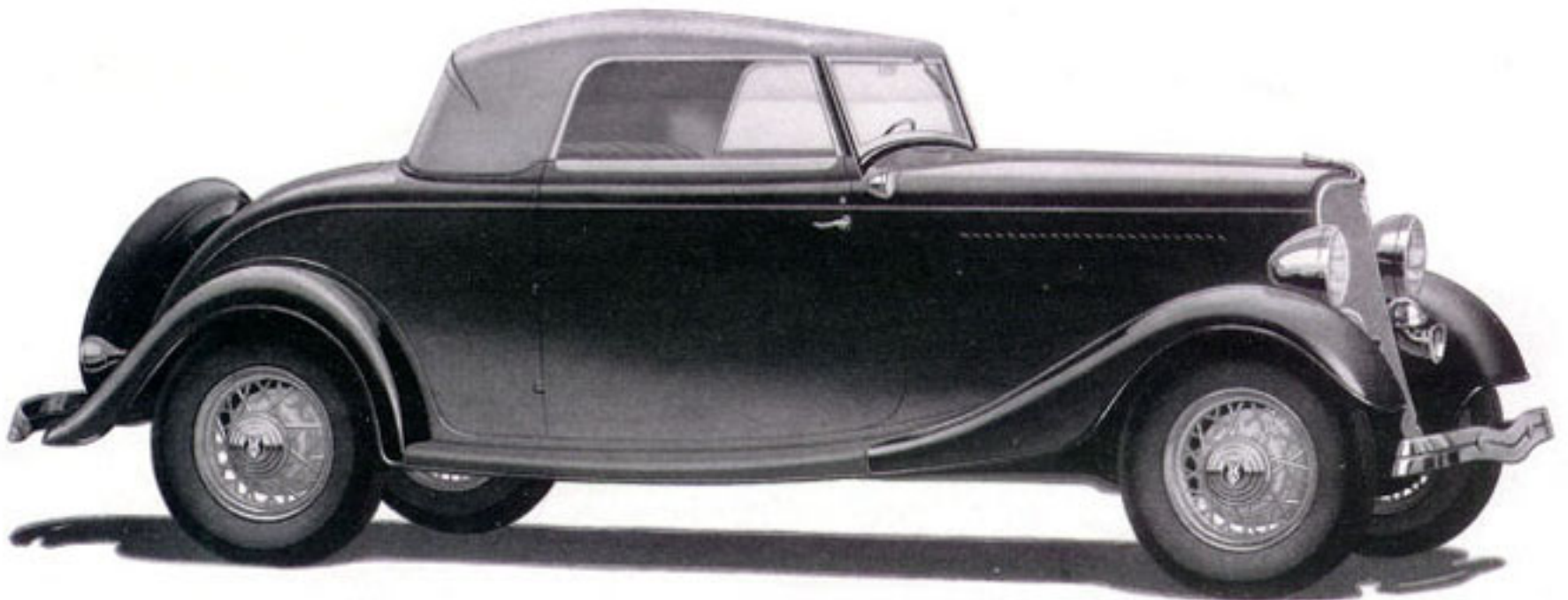
NEW FORD V-8 DE LUXE ROADSTER—Many an admiring glance will follow this dashing new De Luxe Roadster. The wide seat is upholstered in Genuine Leather. The lines of the top are particularly distinctive and it folds neatly into a recess when not in use. Comfortable rumble seat is standard equipment. Windshield wings, as well as windshield, are made of safety glass. . . . There is also a new *Standard Roadster*.



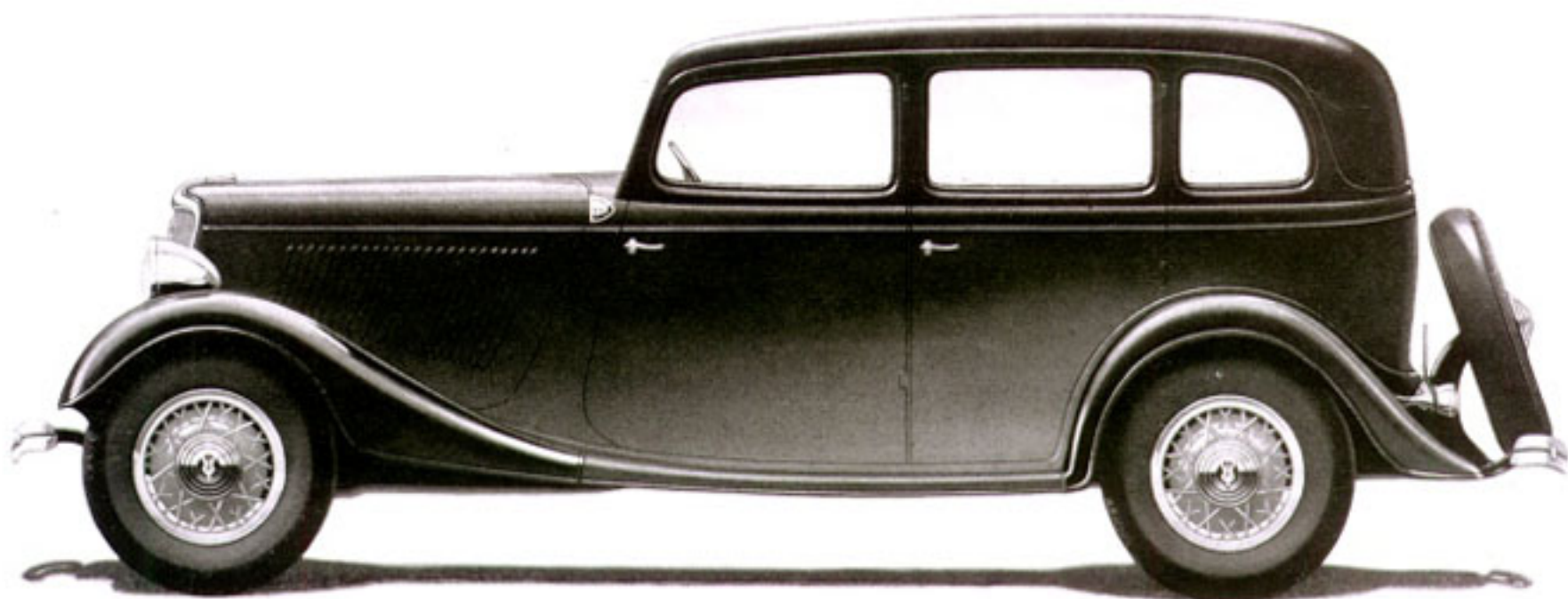
NEW FORD V-8 VICTORIA—A distinctive four-passenger car distinguished by the good taste and richness of its upholstery and appointments. Driver's seat is adjustable. The other front seat automatically slides forward when back is folded. Large, convenient luggage space is provided behind the rear seat. On the Victoria, and all New Ford V-8 cars, the windshield is slanted 20 degrees. This gives an attractive body line and reduces glare.



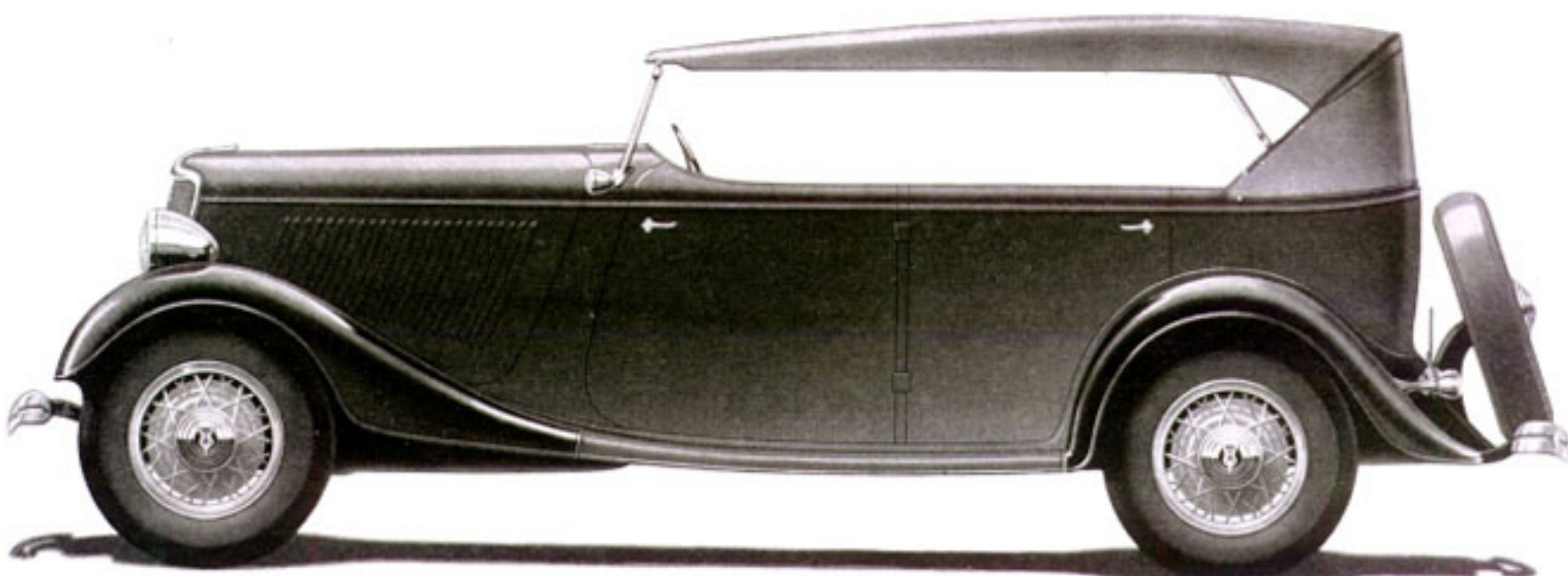
NEW FORD V-8 DE LUXE COUPE (Three Windows)—A beautiful closed car, richly finished and appointed. Note the attractive top—the graceful sweep and flow of the body lines. Ample room in rear deck for luggage. Rear window opens. Can be equipped with rumble seat if desired. . . . There is also a *Standard Three-Window Coupe*, similar in lines and size. These types differ in appointments and upholstery.



NEW FORD V-8 CABRIOLET—Combines the advantages of an open and a closed car. The distinctive top is made of long wearing, waterproof tan cloth, interlined with rubber. When lowered the top folds into a recess back of the seat and may be neatly covered with a top boot. Choice of Genuine Leather or Bedford Cord upholstery. Comfortable rumble seat is standard equipment. The rear curtain has a sliding fastener seam.



NEW FORD V-8 DE LUXE FORDOR SEDAN—A truly De Luxe car in lines, in size, and in finish. The front seat is 42 inches wide. The rear seat is 45 inches wide. Four wide, substantial doors provide independent entrance to front and rear seats. Three side windows give unusual light and vision. . . . The new *Standard Fordor Sedan* is similar in lines, size and comfort, differing in upholstery and appointments.



NEW FORD V-8 DE LUXE PHAETON—A long, low, roomy open car with plenty of dash and go. The tan top has attractive lines and it is easy to raise and lower. Made of the same durable, waterproof material as the top of the Cabriolet—double-thick, interlined with rubber. Genuine Leather upholstery. . . . Similar in lines and size and differing only in upholstery and appointments is the new *Standard Phaeton*.



NEW FORD V-8 COUPE (Five Windows)—One of the four attractive New Ford Coupes. Wide, roomy seat, with convenient parcel shelf behind. Large luggage space in rear deck. Rear window opens. . . . There is also a De Luxe type of this Five-Window Coupe which is upholstered in a choice of Broadcloth, Mohair or Bedford Cord and is equipped throughout with safety glass. Rich, enduring body colors.