

Your next car:
The great new Chrysler.



**Your next car is as much of tomorrow
as it is of today.**

Your next car can surround you with a fuselage
and the concept of the outward curve.

Your next car can have a cockpit,
instead of just a seat and a dashboard.

Your next car can create a controlled environment
that blots away the murmur of road and wind,
leaving an enclosure of quiet luxury.

A place where miniature memory systems
complement your every driving habit.

Your next car can be any of 15 choices.

But only one shape.

And your next car is one you can comfortably afford.

Your next car: one of the great new Chryslers.



New Yorker:
pages 4-9



Town & Country:
pages 10-13



Three Hundred:
pages 14-19



Newport Custom:
pages 20-25

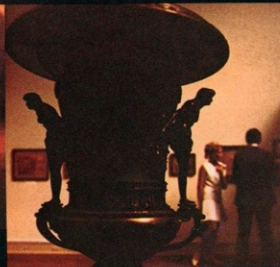


Newport:
pages 26-33



New Yorker 4-Door Hardtop in Dark Briar Metallic

The New Yorker.



Your next car can be a member of the most elegant Chrysler series.

Whether your next car is the New Yorker 4-door hardtop above, or one of 14 other Chryslers, it will have the concept of the fuselage. A body and frame that are one-molded into a smooth, continuous line that curves up around you. Just close the curved side windows and the arc is complete. From under the entry sill to overhead.

Inside each New Yorker, you can expect certain appointments as a matter of course. Up to 14 miniature lighting devices are positioned throughout the cockpit. Including an ignition switch light activated by simply opening either front door.

The perimeter of the cockpit is fitted with simulated deep-rubbed walnut-grained trim to complement interior upholstery materials of Jacquard-weave nylon, Coachman-grain vinyl, or optional natural-toned leather.

The controlled environment in your next car.

Your next car can isolate you from road shock, heat, wind, water, and noise. Its curved, soundproofed cockpit brushes away the strains of outside elements. Carpeting underfoot and along the door panels muffles sound.

A torsion-bar front suspension system and nearly 1000 feet of spring wire deep inside New Yorker seats transform the bumpiest road into a tranquil experience.

Optional automatically controlled air conditioning assures a constant flow of cool, filtered air at the same temperature — mile upon mile.

A unique optional system of "stereo heat" envelops each passenger with a precisely measured quantity of filtered warm air through a network of outlets in both front and rear passenger areas.

And your next car can have an optional Driver Awareness Package that monitors your driving habits, reminds you: "FASTEN BELTS," "LOCK DOORS," "HEADLIGHTS ON."

Your next car: a quiet, constant place where machine relates to man — never vice versa.



New Yorker 2-Door Hardtop in Burnished Bronze Metallic



From this vantage point, you direct the operation of your next car.

Under you, New Yorker's luxuriant 5-foot-wide seat, sheathed in fine-weave upholstery and vinyl, and padded with two layers of thick foam.

To your right, the support of a 9-inch-wide center armrest.

To your left, the outward curve of the fuselage completes the radius of the cockpit and gives you more freedom of movement: extra inches of body width inside the curve.

At eye level, the instantly-read gauges. A trip odometer. The quadrant of the New Yorker's standard TorqueFlite automatic transmission.

And through it, the pulse of a 440 cubic inch V-8.

The reflex of improved power steering, made smoother, more effortless, by the use of sintered metallic components.

And the security of power brakes.



New Yorker 4-Door Sedan in Sandalwood

New Yorker Buyer's Guide / Standard Equipment - Control & Performance: 440 cu. in. V-8 with 4-barrel carburetor, 350 hp, aluminum air cleaner, single exhaust system • Cleaner Air System; exhaust emission control • TorqueFlite 3-speed automatic transmission • 70 amp/hr. battery • Power steering • Power brakes • Torsion-Aire suspension • Self-adjusting brakes • 8.55 x 15 tires

Safety: See complete list on page 34

Lighting: Door-actuated interior lights • Dome light • Time-delay ignition switch light • Glove box light • Map and courtesy light • Trunk light • Twin ashtray lights (front)

Instrumentation: Speedometer • Odometer • Tripometer • Fuel gauge • Alternator gauge • Oil pressure indicator light • Coolant temperature lights • High-beam indicator light

Interior features: Fresh air heater with defroster (4-door models) • Glove box • Electric clock • Instrument panel applique with the look of walnut • Pleated cloth-and-vinyl bench seats with folding center armrests front and rear in 4-door models; front armrests only in 2-door models • Foam-padded seat cushions, front and rear • Door-to-door carpeting • Carpeted lower door trim panels • Two rear seat ashtrays • Rear cigar lighters (4-door models) • 6-spoke steering wheel with molded vinyl handgrips, full horn ring and padded rectangular center area horn bar

Exterior features: Fender-mounted turn signal indicators • Weather-protected door locks • Body accent paint stripes • Wraparound bumpers with integrated styling • Undercoating and hood insulator pad • Fully carpeted trunk • Wheel covers

Optional Equipment - Control & Performance: 440 cubic inch TNT V-8 with 4-barrel carburetor, high-performance camshaft, twin exhausts, and twin-sporklet air cleaner • 46 amp. alternator (std. with air cond.) • Sure-Grip differential • Automatic Speed Control • Power front disc brakes

Trailer-towing package: For towing loads from 2500 pounds up to 5500 pounds • See page 34 for complete list

Safety: Rear seat shoulder belts • Front seat head restraints

Lighting: Cornering lights • Safeguard Sentinel Lighting and automatic headlight dimmer • "Fasten belts" reminder light • "Lock doors" reminder light • "Headlights-on" warning signal

Interior features: Airtemp air conditioning with heater • Auto-Temp automatic control • All-vinyl contoured bucket seats with passenger recliner & folding center cushion armrest (2-dr. models) • Cloth-and-vinyl, all-vinyl, or leather 3-in-1 divided front seat with passenger recliner and individual armrests (4-door models only) • Center console with simulated walnut paneling and lockable storage compartment • 6-way power front seat adjusters • Power window lifts • Power vent windows • AM pushbutton radio • AM/FM Touch Tuner Radio with foot button control • AM/FM Stereo Multiplex Radio with remote speakers and 8-track stereo tape unit • AM radio with 8-track stereo tape unit complete with remote speakers • Front power-operated antenna • Rear seat speaker • 7-position Tilt-A-Scope steering wheel • Electric door locks • Rear window defogger • Rear seat heater with defroster system

Exterior features: Tinted glass • Remote trunk release • WSW tires • Deep-dish wheel covers • Right-hand outside mirror • Two-tone paint • Vinyl roof covering • Front bumper guards • License plate frames • Spare tire cover • Door edge protectors

For a complete options list, consult your Chrysler dealer.



Our option list isn't as long as some other cars'.

It doesn't have to be. Examine the column at the left. Many so-called options on other cars are standard on Chryslers. And several of the options are Chrysler's alone.

The ultimate example: an optional 3-in-1 front seat for 4-door New Yorkers. In an upright position, two halves join to make a 60-inch-wide seat for three. Or, simply lower center armrests for each half, and the 3-in-1 becomes a pair of individually adjustable lounge chairs.

And, if your passenger wishes, the right half reclines back 45 degrees.

The 3-in-1 is available in 6 different color and fabric combinations. The most luxurious is optional natural-toned leather upholstery. Which is shown above.



Town & Country 3-Seat Wagon in Avocado Metallic

Town & Country.



Town & Country 2-Seat Wagon in Antique Ivory

Your next car: It can be the world's best equipped station wagon.

Extend the concept of the curved fuselage-frame over the greater length of a station wagon body.

Then, stretch beautiful, scuff-resistant, Cherrywood vinyl appliqué paneling from integral front bumper to the new double-action tail gate.

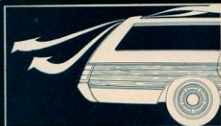
Add 3-speed concealed windshield wipers. Broaden the track 3 inches to increase the width of the carpeted cargo area. Install larger 8.85 x 15 tires.

And, at the rear of the roof, design an airfoil vane that accelerates the air over the electrically-operated rear window, keeping dust and dirt from collecting on it when it's up, or exhaust fumes from entering the rear passenger area when it's down.

Offer a 2-seat model with more than 102 cubic feet of cargo capacity, including an under-floor storage compartment. Or a 3-seater with rear-facing third seat for extra passengers. Either has easy access via the new double-action tail gate that opens out—or swings down.

Make power steering standard. And power brakes. And a 3-speed TorqueFlite automatic transmission. And a 383-cubic inch V-8 that delivers 290 horsepower from regular fuel.

How could you improve on this long list of standard Town & Country features? Just turn the page.



Town & Country Buyer's Guide/Standard Equipment • Control & Performance: 383 cu. in. V-8 with 2-barrel carburetor, 290 hp, silenced air cleaner, single exhaust system • Cleaner Air System; exhaust emission control • TorqueFlite 3-speed automatic transmission • 50 amp/hr. battery • Power steering • Power brakes • Torsion-Air suspension • Self-adjusting brakes • 8.85 x 15 tires

Safety: See complete list on page 34

Lighting: Door-actuated interior lights • Time-delay ignition switch light • Map and courtesy light • Glove box light • Front and rear dome lights

Instrumentation: Speedometer • Odometer • Tripometer • Fuel gauge • Alternator gauge • Oil pressure indicator light • Coolant temperature lights • High-beam indicator light

Interior features: Power tail gate window • Heater with defroster (4 blower speeds) • Glove box • Instrument panel applique with the look of walnut • All-vinyl bench seats with front seat center armrest • Foam-padded seat cushions, front and rear • Door-to-door carpeting • Crank-type vent windows • Carpeted cargo deck • Stainless steel cargo skid strips • Lockable 10 cubic foot hidden storage compartment (2-seat models only) • 3-spoke steering wheel with semi-circular horn ring and padded "delta-shaped" hub

Exterior features: Aerodynamic rear roof wind deflector • Simulated wood body-side and rear ornamentation (may be deleted) • Stainless steel wheel covers • Double-action tail gate • Weather protected door locks • Fender-mounted turn signal indicators • Wraparound bumpers with integrated styling

Options • Equipment • Control & Performance: 383 cubic inch V-8 with 4-barrel carburetor, twin exhausts • 440 cubic inch "Special Wagon" V-8 with 4-barrel carburetor, 350 hp, twin exhausts • Sure-Grip differential • 70 amp/hr. battery (std. with 440 engine) • 40 amp/alternator (std. with air cond.) • Automatic Speed Control • Power front disc brakes

Trailer-Towing Package: For towing loads from 2000 pounds up to 6500 pounds. For a complete list of components, see page 24

Safety: Rear shoulder belts • Front seat head restraints

Lighting: Cornering lights • Safety-guard Sentinel Lighting and automatic headlight dimmer • "Fasten belts" reminder light • "Lock doors" reminder light • "Headlights-on" warning signal

Instrumentation: Electric clock

Interior features: Airtemp air conditioning with heater (single or dual unit) • Auto-Temp automatic control • Cloth-and-vinyl or all-vinyl 3-in-1 divided front seat with passenger recliner and individual armrests • 6-way power front seat adjuster • Power window lifts • Power vent windows • AM pushbutton radio • AM/FM Touch Tuner Radio with foot button control • AM/FM Stereo Multiplex Radio with remote speakers and 8-track stereo tape unit • AM radio with 8-track stereo tape unit with remote speakers • Front power-operated antenna • 7-position Tilt-A-Scope steering wheel • Deluxe steering wheel with full horn ring • Electric door locks • Carpet protection mats

Exterior features: Rear window wiper/washer concealed in tail gate • Tinted glass • White sidewall tires • Door-edge protectors • Deep-dish wheel covers • Remote control outside mirror (left side) • Outside mirror (right side) • Roof luggage rack with adjustable tie-down bar • Tail gate assist handles • Front bumper guards • Rear step pads • License plate frames • Undercoating and hood insulator pad • Tail gate scuff plate/step pad (std. on 3-seat model)

For a complete options list, consult your Chrysler dealer.



Changing the station wagon image.

When you sit in this Town & Country Wagon's all-vinyl front seat—complete with more than a 1000 feet of interwoven steel inner springs—you'll quickly discover that this is no run-of-the-mill station wagon.

Look past the three-spoke, delta-hub steering wheel. The look of walnut paneling on instrument panel and doors adds to the quiet elegance of the cockpit area.

When you look back over an amply carpeted rear cargo area, you're totaling up more than 30 square feet of interior carpeting.

Alongside each rear passenger, there's a covered storage compartment in each rear wheelhousing. And overhead lights for both front and rear passengers.

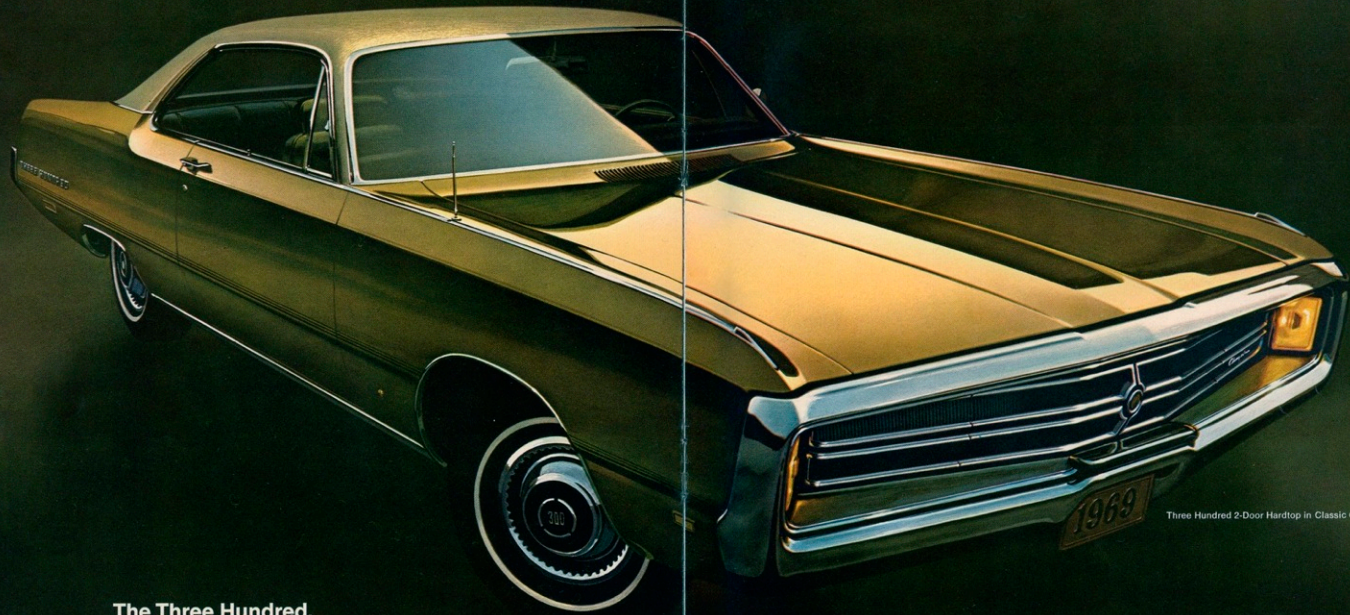
Naturally, your next car offers options to further please all passengers. Seating choices like the

"3-in-1" front seat. Your choice of music

systems and speaker arrangements. But the ultimate must stand as Town & Country's "stereo air conditioning": a system of two separate air conditioners—one in front, one in back—that channels clean, cooling air through 10 separate outlets strategically positioned throughout the passenger area.

Complete an examination of some 50 remaining options on the opposite page, and you should be convinced: The Town & Country Wagon has enough to be your next car.





Three Hundred 2-Door Hardtop in Classic Gold Metallic

The Three Hundred.



Your next car: it can take on a feeling of soaring freedom.

Your next car can share a continuing reputation.

For success, for strength, for beauty. It can hide its headlights, but not its heritage.

Its 440 V-8 and 3-speed automatic transmission supply instant recollection of victories past.

The combination of welded fuselage and adjustable torsion-bar suspension, a subtle reminder of hard-won rally championships.

Its responsive optional power steering and massive brakes, the exact control for a solid-yet-soaring driving impression.

The difference between hardtop and convertible: little.

The canopy gone. The cockpit remains. A rocker switch touched, the nylon top retracts. The rails slide silently *behind* the rear seat—not alongside it. The result: a rear passenger area stretching nearly a foot wider.

The front seat gives way to individual pleated-and-pillowed bucket seats with center cushion and armrest.

An optional floor console can divide them.

A power system can be added to adjust them six ways. Then, a passenger recliner.

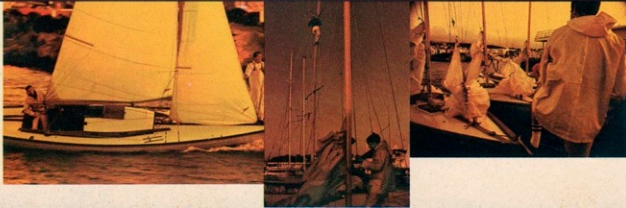
On the exterior of the hardtop or convertible, a curved, stressed skin.

Smooth, unencumbered lines.

A minimum of chrome.



Three Hundred Convertible in Crimson



The hardtops: more than one cockpit to choose from.

Choose either the 2-door hardtop or the more spacious 4-door below. In either, those convertible vinyl bucket seats are standard fare. Together with outward curving sideglass, soundproofed ceiling, and curved instrument control board, they comprise Cockpit One.

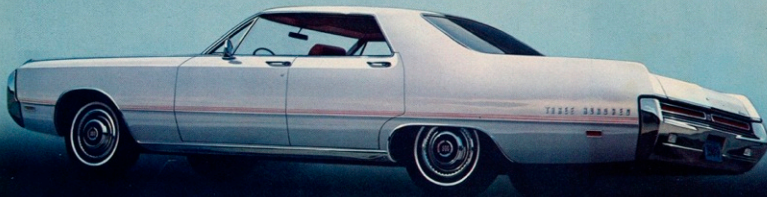
Cockpit Two—your choice of the optional foam padded, deep pleated seats shown above. A fold-down center armrest is part of the arrangement, whether you select cloth-and-vinyl, or all-vinyl.

Specify either and they stretch more than 5 feet between the outward curves of the cockpit.

Across the instrument cluster, a battery of rocker and thumbwheel switches in a panel ornamented with brushed aluminum.

Surrounding each passenger, 1, 2, or 5 optional music speakers.

For the longer distance, an optional padded steering wheel that telescopes—and tilts to 7 angles.



Three Hundred 4-Door Hardtop in Splinnaker White

Chrysler 300 Buyer's Guide/Standard Equipment - Control & Performance: 440 cu. in. V-8 with 4-barrel carburetor, 350 hp, silenced air cleaner, single exhaust system • Cleaner Air System • Torque-Flite 3-speed automatic transmission • 70 amp/hr. battery • Torion-Aire suspension • Self-adjusting brakes • 8.55 x 15 tires

Safety: See complete list on page 34
Lighting: Door-actuated overhead courtesy light (except convertible) • Time-delay ignition switch light • Turn signal indicator lights

Instrumentation: Speedometer • Odometer • Tripometer • Fuel gauge • Alternator gauge • Oil pressure indicator light • Coolant temperature lights • High-beam indicator light

Interior features: Heater with defroster (4 blower speeds) • Glove box • All-vinyl contoured bucket seats with center cushion armrest • Foam-padded seat cushions, front and rear • Door-to-door carpeting • Two rear seat ashtrays • Crank-type vent windows • 3-spoke steering wheel with semicircular horn ring

Exterior features: Power-operated concealed headlights • Weather-protected door locks • Full-length triple body accent paint stripes • Wraparound bumpers with integrated styling • Wheel covers

Optional Equipment - Control & Performance: 440 cubic inch TNY V-8 with 4-barrel carburetor, high-performance camshaft, twin exhausts, and twin- snorkel air cleaner • 40 amp. alternator (std. with air cond.) • Front power disc brakes • Power steering • Power brakes • Trailertowing package (see page 34) • Sure-Grip differential • Heavy-duty suspension and brakes • Automatic Speed Control

Safety: Rear shoulder belts (except convertible) • Front seat head restraints • Front seat shoulder belts (convert. only) • 3-speed electric windshield wipers • Recessed-center steering wheel with padded hub

Lighting: "Fasten belts" reminder light • "Lock doors" reminder light • "Headlights-on" warning signal • Cornering lights • Safeguard Sentinel Lighting and automatic headlight dimmer • Glove box light • Trunk compartment light • Map and courtesy light

Instrumentation: Electric clock
Interior features: Airtemp air conditioning with heater • Auto-Temp automatic control • Cloth-and-vinyl bucket seats, passenger recliner, and center cushion armrest (except convertibles) • All-vinyl or cloth-and-vinyl bench front seats with pull-down center armrest (except convertibles) • Center console with lockable storage compartment • 6-way power front seat adjusters • Power windows • Power vent windows • AM push-button radio • AM/FM Touch Tuner Radio with foot button control • AM/FM Stereo Multiplex Radio with remote speakers and 8-track stereo tape unit • AM radio with 8-track stereo tape unit with remote speakers • Front power antenna • Rear seat speaker • 7-position Tilt-A-Scope steering wheel • Deluxe steering wheel with full horn ring • Electric door locks • Rear window defogger (except convert.) • Carpet protection mats • Rear seat heater with defroster system (except convertible)

Exterior features: Vinyl roof covering (except convertible) • Tinted glass • Remote trunk release • White sidewall tires • Deep-dish wheel covers • Right-hand outside rearview mirror • Remote control outside rearview mirror (left) • Fender-mounted turn signal indicators • Front bumper guards • License plate frames • Trunk carpeting with spare tire cover • Undercoating and hood insulator pad

For a complete options list, consult your Chrysler dealer.



Your next car: the "almost" convertible.

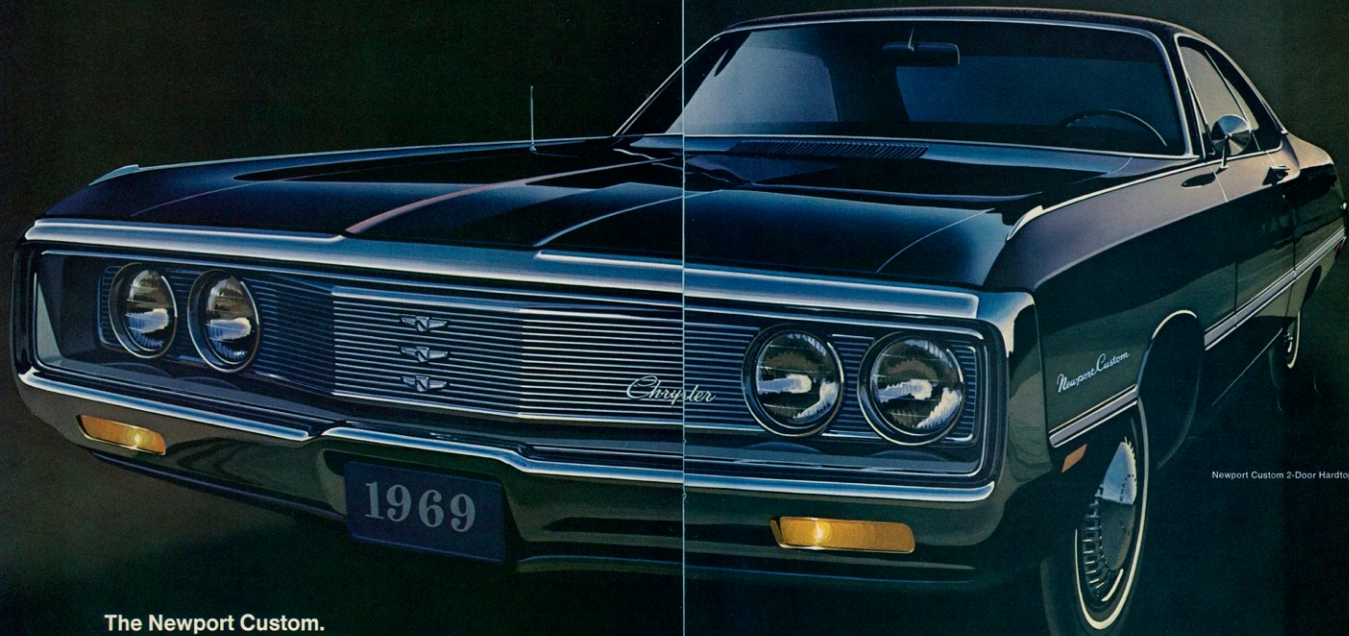
Your next car can be all convertible—except for its top. You can choose the individual buckets—illustrated here—either with the standard center seat and fold-down armrest; or as an option, separate them with a floor-mounted convenience console that harbors automatic transmission quadrant and shift control, ashtray, lighter, additional courtesy lights and a lockable storage compartment.

Your next car can provide that "top down" sensation with optional air conditioning and automatic temperature control to maintain any temperature you choose to set.

Your next car can create a "top up" appearance with one of four deep-grained vinyl roof colors, including a new Champagne.

Your next car can have over 50 options that all Three Hundreds share. Whether it's convertible—or "convertible,"





Newport Custom 2-Door Hardtop in Formal Black

The Newport Custom.



Your next car: It should have those extra touches of elegance, but at a price you can easily reach.

Your next car should be a sensible combination of size, comfort and affordability. Your next car can be a Newport Custom.

Enter it and you'll notice some things instantly. The miniaturized light that illuminates the ignition switch. The arcing outer edges of the cockpit. A single line, starting below your seat and curving outward, upward and overhead to give you more room. And finer touches for front seat passengers: not one, but two ashtrays below a curved, padded instrument panel.

Your next car: It can take on the feel of a library or den.

It can have a quiet, *do-not-disturb* atmosphere throughout.

The door that closes almost inaudibly on new safety latches. The sounds of a standard 383 cubic inch V-8 muffled by more than 50 pounds of soundproofing surrounding the cockpit.
An ashtray at hand for each passenger. An armrest at the center of each richly appointed front seat. Optional tinted glass to darken the sun.

FM stereo music through five hidden speakers. A rear seat heater. Air conditioning. Silent power windows. Six-way power-operated front seat.

In short, there's almost no limit to the way you can personalize your next car.



Newport Custom 4-Door Sedan in Jubilee Blue Metallic



A closer look at the cockpit.

Because of the fuselage's outward curve, there's more space to stretch out in. 4 inches more shoulder room. 6 inches more hip room.

A foam-padded front seat of deep-pleated cloth-and-vinyl reaches across 60 inches.
For driver and single passenger, a wide center armrest folds down to create the effect of individual seats.
The driver commands a line of sweeping visibility. And controls the Newport Custom with the flick of a switch.

The touch of a lever.
Power-assisted brakes are optional. Power steering may be specified. A 440 cubic inch V-8 with 480 foot-pounds of torque can replace the standard "383"; a TorqueFlite automatic transmission in lieu of a 3-speed manual transmission.



Newport Custom 4-Door Hardtop in Surf Green Metallic

Newport Custom Buyer's Guide/Standard Equipment - Control & Performance: 383 cu. in. V-8 with 2-barrel carburetor, 230 hp, silenced air cleaner, single exhaust system • Cleaner Air System • 3-speed manual transmission • 59 amp/hr. battery • Torson-Aire suspension • Self-adjusting brakes • 8.55 x 15 tires

Safety: Dual braking system • Energy-absorbing front seat backs • Energy-absorbing steering column • Padded instrument panel and sun visors • Roadside Warning flashers • Parking and brake system warning light • Side markers • Inside Day/Nite mirror with Safety-Action arm • Outside mirror (left side) • Lap belts, front and rear • Front seat shoulder belts • Front seat back-latches (2-door models) • Front seat belt retractors • See complete list on page 34

Lighting: Door-actuated overhead courtesy lights

Instrumentation: Speedometer • Odometer • Tripometer • Fuel gauge • Alternator gauge • Oil pressure indicator light • Coolant temperature lights • High-beam indicator light

Interior features: Heater with defroster (4 blower speeds) • Glove box • Cloth-and-vinyl bench seats with pull-down front center armrest • Foam-padded seat cushions, front and rear • Door-to-door carpeting • Crank-type vent windows • 3-spoke steering wheel with semicircular horn ring

Exterior features: Weather-protected door locks • Full-length body accent paint stripes • Wheel covers

Optional Equipment - Control & Performance: 393 cubic inch V-8 with 4-barrel carburetor, twin-snorkel air cleaner, twin exhaust system • 440 cubic inch THT V-8 with 4-barrel carburetor, high-performance camshaft, twin exhausts, and twin-snorkel air cleaner • Torqueflite 3-speed automatic transmission • 70 amp/hr. battery (std. with 440 engine) • 49 amp. alternator (std. with air cond.) • Touch-and-Turn lane changer • Power disc brakes up front • Power steering • Power brakes • Trailer-towing package (see page 34) • Sure-Grip differential • Heavy-duty brakes and suspension • Automatic Speed Control

Safety: Front seat head restraints • Rear seat shoulder belts • 3-speed electric windshield wipers • Recessed-center steering wheel with padded hub

Lighting: Cornering lights • Safeguard Sentinel Lighting and automatic headlight dimmer • Glove box light • Trunk compartment light • Map and courtesy light

Instrumentation: Electric clock

Interior features: Airtemp air conditioning with heater • Auto-Temp automatic control • Cloth-and-vinyl or all-vinyl 3-in-1 divided front seat with gas-spring recliner, individual armrests (4-door models) • All-vinyl bench front seat with pull-down center armrest • 6-way power front seat adjuster • Power window lifts • Power vent windows • AM push-button radio • AM/FM Touch Tuner Radio with foot button control • AM/FM Stereo Multiplex Radio with remote speakers and 8-track stereo tape unit • AM Radio with 8-track stereo tape unit with remote speakers • Front power antenna • Rear seat speaker • 7-position Tilt-A-Scope steering wheel • Deluxe steering wheel with full horn ring • Electric door locks • Rear window defogger • Rear seat heater with defroster system • Carpet protection mats

Exterior features: Vinyl roof covering • Tinted glass • Remote trunk release • White sidewall tires • Deep-dish wheel covers • Fender-mounted turn signal indicators • Remote control outside rearview mirror (left-hand) • Right-hand outside rearview mirror • Front and rear bumper guards • License plate frames • Trunk carpeting with spare tire cover • Undercoating and hood insulator pad • Door edge protectors • Two-tone paint

For a complete options list, consult your Chrysler dealer.



Your next car can have 3 front seats — in one.

When you choose a 4-door sedan or 4-door hardtop as your next car, you can add Chrysler's ultimate piece of interior furniture: the 3-in-1 front seat.

Available in either cloth and vinyl, shown here, or all-vinyl.

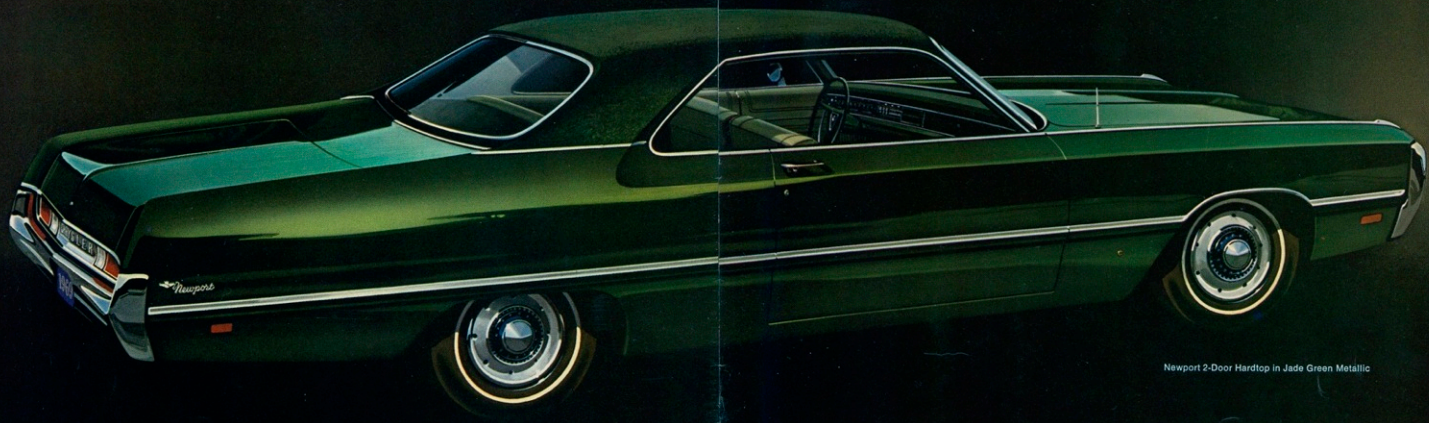
In either case, your next car will have a cockpit seat that performs three functions well.

It can serve as a 5-foot-wide lounge sofa with enough room to accommodate three.

With both center armrests down, the seat behaves more like individual chairs. For both halves are separately adjustable.

And, when a passenger wishes to relax, the right half obliques. By reclining as much as 45°.





Newport 2-Door Hardtop in Jade Green Metallic

The Newport.



Your next car: the only resemblance to smaller cars should be in its price sticker.

Your next car can have the kind of handling and suspension seldom found on smaller cars: a combination of a full-size wheelbase and adjustable torsion-bar front suspension that results in a smoother, road-settling approach to travel.

Your next car can have precision-cast 383 cubic inch V-8 still designed to use regular fuel.

And your next car can have the kind of distinctive good looks and reputation found only in Chrysler.

Wheel covers, not hub caps, on larger tires, larger rims, and a wide, stable track.

And yet, your next car can have a price tag that'll make you wonder why you never thought about a full-size car before.



Your next car: sometimes, the improvements are best measured in extra inches.

The 1969 Newport. Like all the great new Chryslers, 5 inches longer.

The trunk is now large enough to hold 8 suitcases. Instead of 7. The engine, more accessible. The front passenger area: 3 inches wider. And because there's a new seat track for our optional 6-way power seats, you can have an added inch of head room.

The wheelbase: at 124 inches, as much as 6 inches longer than the smaller cars*. And those extra inches translate into a smoother ride, surer footing, and more positive handling.

The optional Tilt-A-Scope steering wheel. It adjusts in and out 2½ inches.

Up or down to 7 different driving angles, each 5 degrees apart.

Extra inches.

A very quick way to measure how much more your next car can be.



Newport 4-Door Sedan in Aquamarine Metallic



Newport's seat: a good example for some other cars to follow.

To make its steel support frame comfortable for passengers to sit on, the standard Newport seat goes to quite some lengths.

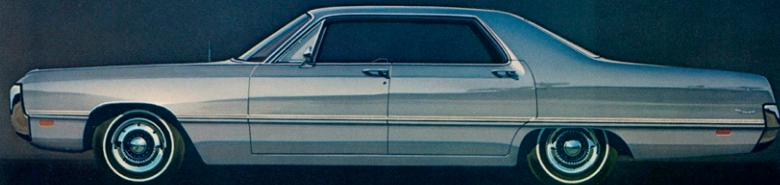
Tiny, intermeshed steel spring elements wind across all 5 feet of seat frame.

Then, once the seat shape has been formed by this web of wire, a layer of thick foam padding is added.

Then, you can specify another layer.

And finally, an elegant sheath of Jacquard-weave cloth-and-vinyl upholstery covers the whole seat.

Then, from any seat in your next car, a passenger can relax in cushioned comfort. Either front seat passenger can lock all doors simply by pushing down on an optional electric door lock button. The driver can see through a clear rear window thanks to an optional rear window defogger.



Newport 4-Door Hardtop in Platinum



The cockpit: more than just a seat and a dashboard.

The seating in this curved gallery was designed three times. By the stylists. By engineers. By scientists.

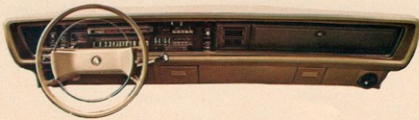
The result is a seating structure that is soft where it should be, firm where it must be.

The control board recessed into a curved instrument panel holds a complex of standard and optional memory systems.

Systems that blink, buzz, and brighten as they monitor speed, safety equipment, and engine operation.

Systems like an optional Safeguard Sentinel Unit that can keep headlight beams on for 60 seconds to brighten the path to your front door — then shut off automatically.

Systems like the unit deep inside the optional Auto-Temp air conditioning that cuts in and out automatically to maintain a pre-selected cockpit temperature even when the climate takes a sudden turn outside.



Your next car: the first "6-passenger" convertible to really make room for 6 passengers.

The lowest priced Chrysler convertible, too. Which makes it an attractive combination of "wind-in-your-hair" style and practical pricing.

Room for 6, plan 1: a standard front seat of all-vinyl, 60 inches wide.

Or, room for 6, plan 2: optional pleated vinyl bucket seats (shown opposite) for front passengers, complete with center cushion that adds a third seating space up front.

To make the necessary room in back, there's a completely redesigned convertible top.

Power operated, its rails fold down in a well *behind* the rear seat, not alongside it.

So, there's an added 10 inches of shoulder room that couldn't be there before.

Two more plusses for the Newport convertible owner—new safety-designed convertible top latches are flush-mounted in the windshield header, and the new expanded vinyl top boot features

concealed fasteners for a smoother, more-tailored appearance.

And the Newport convertible is still priced just a few dollars a month more than the most popular smaller convertibles, comparably equipped.



Newport Convertible in Tuscan Bronze Metallic

Newport Buyer's Guide/Standard Equipment - Control & Performance: 383 cu. in. V-8 with 2-barrel carburetor, 290 hp, silenced air cleaner, single exhaust system - Cleaner Air System - 3-speed manual transmission - 59 amp/hr. battery - Torsion-Aire suspension - Self-adjusting brakes - 8.55 x 15 tires

Safety: See complete list on page 34
Lighting: Door-actuated interior lights - Time-delay ignition switch light
Instrumentation: Speedometer - Odometer - Tripometer - Fuel gauge - Alternator gauge - Oil pressure indicator light - Coolant temperature lights - High-beam indicator light

Interior features: Heater with defroster (4 blower speeds) - Glove box - Cloth-and-vinyl bench seats (except convertible) - All-vinyl bench seats with pull-down front center armrest (convertible only) - Door-to-door carpeting - Two rear seat ashtrays - Crank-type vent windows - 3-spoke steering wheel with semicircular horn ring

Exterior features: Weather-protected door locks - Wraparound bumpers with integrated styling - Wheel covers

Optional Equipment - Control & Performance: 383 cu. in. V-8 with 4-barrel carburetor, twin-snorkel air cleaner, twin exhaust system - 440 cubic inch TMT V-8 with 4-barrel carburetor, high-performance camshaft, twin exhausts, and twin-snorkel air cleaner - Torqueflite 3-speed automatic transmission - 70 amp/hr. battery (std. with 440 engine) - 46 amp. alternator (std. with air cond.) - Touch-and-Turn lane changer - Front power disc brakes - Power steering - Power brakes - Sure-Grip differential - Heavy-duty brakes and suspension - Automatic Speed Control - Trailer-towing package; see page 34

Safety: Front seat head restraints - Front seat shoulder belts (conv. only) - Rear seat shoulder belts (except conv.) - 3-speed electric windshield wipers - Recessed-center steering wheel with padded hub

Lighting: "Fasten belts" reminder/light - "Lock doors" reminder light - "Headlights-on" warning signal - Cornering lights - Safeguard Sentinel Lighting and automatic headlight dimmer - Glove box light - Trunk compartment light - Map and courtesy light

Instrumentation: Electric clock
Interior features: Airtemp air conditioning with heater - Auto-Temp automatic climate control - All-vinyl bucket seats - Passenger seat recliner and center cushion armrest - All-vinyl bench front seat (standard in convertibles) - Center console and lockable storage compartment - 6-way power front seat adjuster - Power window lifts - Power vent windows

- AM pushbutton radio - AM/FM Touch Tuner Radio with foot button control - AM/FM Stereo Multiplex Radio with remote speakers and 8-track stereo tape unit - AM radio with 8-track stereo tape unit with remote speakers - Front power antenna - Rear seat speakers - 7-position Tilt-A-Scope steering wheel - Deluxe steering wheel with full horn ring - Electric door locks - Rear window defogger (except convertible) - Rear seat heater with defroster system (except convertible) - Carpet protection mats - Bright seat side shields (bench seats only, std. on convert.) - Foam seat cushions (all-vinyl bench and bucket seats)

Exterior features: Vinyl roof covering (except convertible) - Tinted glass - Remote trunk release - WSW tires - Door-edge protectors - Deepdash wheel covers - Fender-mounted turn signal indicators - Remote control outside mirror (left side) - Right outside rearview mirror - Front and rear bumper guards - Bright upper door frames (4-door sedan only) - License plate frames - Trunk carpeting with spare tire cover - Undercoating and roof insulator pad - Two-tone paint (except convertibles)

For a complete options list, consult your Chrysler dealer.

Your next car and options.

How would you go about improving on Newport's list of standard features?

By choosing the kind of options that add an extra touch now. And an extra dollar when you sell.

Like optional textured- vinyl front seats in Newport hardtops and sedans (shown above). Or scuff-resistant simulated teakwood-grain planking along the sides of 2-door hardtops or convertibles.

An Auto-Speed system, with push button control located on the end of the turn signal lever, where it's easy to reach, easy to set.

In all, there are more than 60 options you can select for your next car. Everything from a light that blinks on "LOCK DOORS" or "FASTEN BELTS" to headlights that shut off automatically when you're driving at dawn.

Choose from the list on the left.

Then make a 1969 Chrysler into your next car.



Your next car—specifications and measurements

The body is one piece—a unit of welded structural steel frame members, body braces, sills, and metal panels. Over 5,000 individual welds produce a Unity of unusual strength—and silence. Each welded body is dipped and sprayed 6 times in a series of cleansing, rinsing, and rust-inhibiting chemical baths. A 7th step is immersion in a special corrosion-resistant primer that covers both inside and outside of all lower body sheet metal and structural members.

Chrysler's standard and optional engines are advanced-design overhead valve V-8s. Fuel burning efficiency is obtained by using wedge-shaped combustion chambers. Pistons are lightweight aluminum with steel struts for heat expansion control. Connecting rods and crankshaft are of forged steel. Tappets are operated hydraulically. Exhaust valves of hardened alloy-steel are heat-resistant, and they relate to equalize wear and provide extended valve life. Mufflers and tail pipes on all engines are aluminum to resist corrosion. (See engine chart below.)

All Chryslers have a dual braking system—one for front wheels, the other for rear wheels. Each system serves as a back-up should a pressure loss develop in the other. Chrysler brakes self-adjust whenever they are applied while the car is backing up. Effective drum brake lining area is 223.4 sq. in. for Newport and Newport Customs, 234.1 sq. in. for 300s, New Yorkers, and Town & Country Wagons. Power-assisted front disc brakes are optional on all models. Total swept area is 392.8 sq. in.

The parking brake is connected to cables that apply the rear wheel brakes. A signal light notifies the driver when the parking brake is on.

A more complete burning of the fuel-air mixture in combustion chambers, as provided by the Cleaner Air System, results in a reduction of unburned hydrocarbons and carbon monoxide concentrated in the exhaust system. The System consists primarily of:

- An altered distributor that retards spark at idle.
- A modified carburetor which gives lean fuel air mixture at idle.
- Modifications to the combustion chamber design, induction and exhaust systems.

Chrysler's radiator and block, in-cylinder heater, have a total 17 quart coolant capacity (18 quart with 440 engine). A thermostatic by-pass control and pressure vent radiator cap regulate temperatures automatically.

Chrysler's 12-volt battery is rated at 59-ampere-hours (70-ampere-hours with 440 engine). Alternator is rated at 37 amperes. Circuit breakers keep vital electric units operating even when "shorting" occurs. The concealed windshield wipers are powered by either a 2-speed or an optional 3-speed motor. (3-speed standard on New Yorker and Town & Country.)

An automatic choke and mechanical fuel pump govern the fuel flow on all Chryslers. Tank capacity: 24 gallons on Town & Country; 23 gallons on all other models.

There are 2 fuel filters—a woven plastic 40 micron filter in the gasoline tank and a replaceable 15 micron paper filter in the fuel line between the fuel pump and carburetor.

A smooth 3-speed manual transmission is standard on Newport and Newport Customs. Second and third gears are synchronized for smooth, quick upshifting. Synchronizer springs are stainless steel. Outside clutch diameter is 11 inches. A permanently lubricated ball bearing serves as the release bearing. The TorqueFile automatic 3-speed transmission is standard on Town & Country, 300, and New Yorker, optional on Newport and Newport Custom. TorqueFile's torque converter combines with a balanced 3-speed gear assembly to provide consistently smooth and economical shifting. Special transmission oil, installed at the factory, stays thin at low temperatures to provide easier cold-weather starting and smoother operation.

Chrysler's Torsion-Aire suspension consists of 2 independent chrome-steel torsion bars up front, and leaf springs in the rear. The result is a flat, even, responsive ride in all driving maneuvers. A stabilizer bar in front helps the body resist lean.

Diagonally-mounted struts reinforce the front wheel lower control arms. These arms are slightly angled to prevent front-end dive during hard braking. Shock absorbers are hydraulic, double-act type. The 5½ asymmetrically-mounted rear cushion leaf springs (4½ on Newport and Newport Customs) resist rear-end squat on acceleration. A new Sure-Grip differential, optional on all models, provides traction on slippery or rough surfaces.

Tires: Town & Country, 8.85 x 15. All other models, 8.55 x 15. Rims: Town & Country, 6½ inches. New Yorker, 6.0 in. All other models, 5½ in.

Trailer-Towing Package

Your Chrysler is big strong enough to pull up to 2,500 pounds. A trailer-towing package, available as an option, permits towing up to 5,500 pounds. TorqueFile transmission and a frame mounted load-equalizing hitch are required. The components provided in the trailer-towing package are:

- Maximum Capacity Cooling System: high capacity radiator, larger transmission oil cooler, 7 blade fan, fan shroud.
- Heavy-Duty Brakes: manual adjusting, 11 x 3-inch drums, front and rear. Special fade-resistant linings. 255.4 sq. in. of effective bonded lining area.
- Heavy-Duty Suspension: heavy-duty torsion bars, large diameter sway bar, heavy-duty rear leaf springs, high control shock absorbers.
- Heavy-Duty Safety-Rim Wheels: heavy-duty rims, 6½-in. in Town & Country, 6.0 in all other models.
- Heavy-Duty Performance Axle: 3.23 to 1 ratio.
- Heavy-Duty Turn Signal Flasher.
- Heavy-Duty Stop Lamp Switch: increases switch life.

Chrysler Standard Safety Features

For 1969, Chrysler has met or exceeded the more than 50 Federal safety standards established in 1968 and will do so with those set for 1969. Among the safety features in 1969 Chryslers are these:

- Windshield wiper system with articulated left blade which clears a substantially greater glass area in front of the driver than conventional blades.
- Dual Braking System.
- Padded instrument panel and sun visors.
- Ignition key switch located to left of steering column, not exposed to knees of unrestrained passengers.
- Dual-Ridge Safety-Rim wheels.
- Energy-absorbing front seat backs.
- Car operating and accessory controls grouped close to the steering column for easy accessibility.
- Roadside Warning flashers.
- Parking and brake system warning lights.
- Side markers.
- Turn signal indicator lights.
- Back-up lights.
- Aerodynamic wind reflector on roof of station wagons to keep tail gate window clear.
- Outside mirror (left side).
- In-line day/night mirror with Safety-Action Arm.
- Soft window control knobs.
- Safety-Action inside door handles.
- Folding top linkage for convertibles designed to minimize exposure of sharp edges and protrusions.
- Lap belts, 3 sets front, 3 sets rear, 2 in 3rd seat of wagons.
- Shoulder belts, left and right front (except convertible).
- Windshield defroster and defogger.
- Glare-resistant finish on reflecting surfaces.
- Inside door-locking push buttons on all two door models—located forward for easy access to driver and front seat passengers.
- Non-override door locks on all doors except driver's.
- Interlocking safety door latches.
- Multispeed electric windshield wipers and electric windshield washers.

Exterior Colors:

- A Platinum
- B Bahama Blue Metallic
- C Jubilee Blue Metallic
- D Dark Briar Metallic
- E Surf Green Metallic
- F Avocado Metallic
- G Jade Green Metallic
- H Sandalwood
- I Aquamarine Metallic
- J Crimson
- K Bronze Mist Metallic
- L Burnished Bronze Metallic
- M Tuscan Bronze Metallic
- N Spinnaker White
- O Formal Black
- P Antique Ivory
- Q Classic Gold Metallic
- Charcoal Metallic (Not illustrated)

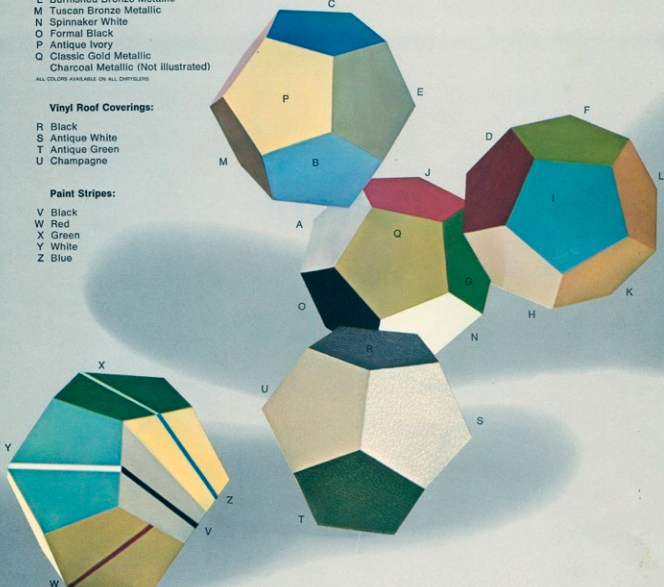
ALL COLORS AVAILABLE ON ALL OPTIONS.

Vinyl Roof Coverings:

- R Black
- S Antique White
- T Antique Green
- U Champagne

Paint Stripes:

- V Black
- W Red
- X Green
- Y White
- Z Blue



customer
care

To lease your Chrysler in top condition, lease it through the Chrysler Finance Division. You'll know it's best-year Chrysler Dealer.

All product illustrations and specifications are based on authorized information. Although descriptions are believed correct at publication approval, accuracy cannot be guaranteed. Some of the equipment shown on product illustrations is optional, extra cost. Chrysler Motors Corporation reserves the right to make changes from time to time, without notice or obligation, in price, specifications, colors and materials, and to change or discontinue models.

1969 Engine Availability

Displacement	ENGINE				MODEL			
	Carb.	Camshaft	Air Cleaner	Exhaust System	Newport & Newport Custom	Town & Country	New Yorker	
383	1.2-bbl	256-260-32	9.2	Silenced	Single	Std.	• Std.	•
			10.0	Double Spark	Dual	Opt. (A)	• Opt.	•
440	1.4-bbl	256-260-32	9.2	Silenced	Single	• Std.	• Std.	New Yorker
			10.1	Double Spark	Dual	• Opt.	• Opt.	•

Major Dimensions—1969 Models

Wheel Base	EXTERIOR			Overall	Height (a)	INTERIOR					
	Front	Rear	Length			Width	Effective Head Room	Seat Height	Leg Room	Shoulder Room	Knee Room
124	62.1	60.7	224.7	79.1	56.3	39.7	37.2	42.2	63.2	82.2	
						38.1	37.2	42.2	63.4	82.4	
122	62.1	60.7	224.8	79.1	56.3	39.6	40.2	41.8	63.4	82.8	
						38.1	37.2	42.2	63.4	82.8	

(a) With automatic transmission only.

(a) Estimated drag load.

CHRYSLER



CHRYSLER
MOTORS CORPORATION