

FORD ECONOLINE VANS '75

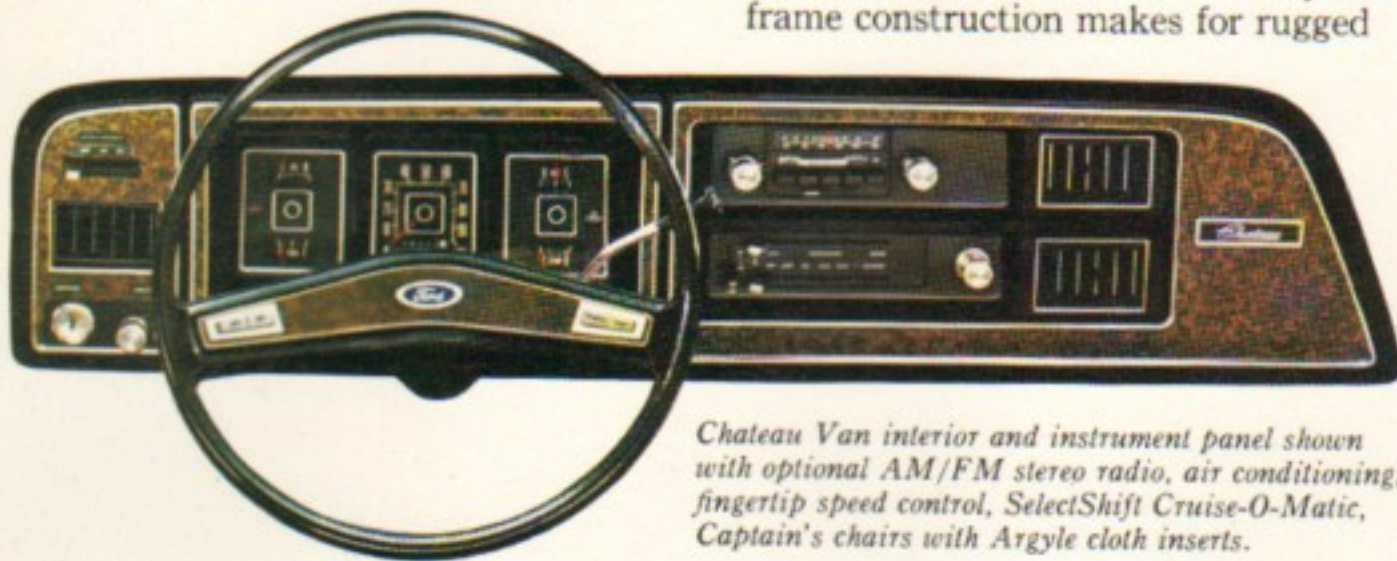


Introducing Ford's new '75 Econoline.

Ford redesigns the van... creates a new generation of value with basic advances in room, comfort, durability and all-around usefulness.

New comfort. The new '75 Ford Econoline is a van designed as much for people as for things. It brings you a completely new level of driving

New durability. The new '75 Econoline is the only van to have separate frame/body construction (as opposed to unitized body). This kind of body-on-frame construction makes for rugged



Chateau Van interior and instrument panel shown with optional AM/FM stereo radio, air conditioning, fingertip speed control, SelectShift Cruise-O-Matic, Captain's chairs with Argyle cloth inserts.

comfort. The engine and the front axle have been moved forward, out of your way. The entire driver area is much more spacious. Both the driver and passenger have more seating comfort.

The passenger door openings are bigger. It's easy for you to step in and out, to move from the driver's seat to the load area, to step across into the passenger side, to enter and leave by a door.

You'll find the '75 Econoline has a new solid "command" feeling in ride and handling... and a quiet that says *quality*. It's the quiet you get with an out-front engine, insulation and new body on-frame construction with body mounts.

Important new ways of outfitting a van for personal use—or for the man that "lives" in his van all day—are offered. Attractive new upholstery and trim with woodgrained effect on instrument panel and doors, cut-pile carpeting, one-way glass, Captain's swivel chairs... even an AM/FM stereo radio with tape player... are a few options that are available to make your van a personal vehicle.



Molded, insulated engine cover console.

strength and long service life. To protect the body from the effects of time and weather, key body components are galvanized or coated with zinc-rich

primers... and then the *entire* body* gets a complete deep-dip electrocoat primer.

New all-around usefulness—with payloads up to 2½ tons. The new Econolines are offered in an expanded lineup. Four Series (E-100, E-150, E-250, E-350) with GVW's ranging

up to 10,000 lb. and payloads to 5075 lb. New 124- or 138-in. wheelbases. The new E-350 provides the highest payload in its field! And new Cutaways

(for motor homes) and 12- to 14-ft. Parcel Delivery Vans with single or dual rear tires. 300-cu. in. Six standard, 351- and 460-cu. in. V-8's optional.



Full-foam driver's seat with optional Argyle cloth inserts.





Compare Ford's new

Now you have a whole new set of facts to consider in choosing your next van.

Ford's new generation of vans creates greater room and comfort inside . . . new servicing ease outside compared to '74. And new value features throughout! Examine the cutaway illustration

at right. See all the new innovations and features incorporated into the new '75 Econoline . . . and then compare with your present van. Or any other van on any basis you wish.



Easy-access front service center. Econoline's new mini-hood and engine-forward design allow convenient routine service from the front. Now all of these 17 items can be reached from *outside*, under the hood:

- Automatic transmission fluid
- Engine thermostat
- Water pump
- Alternator
- Air conditioning compressor
- Air cleaner
- Most belt drives
- Oil dipstick



- Distributor
- Timing marks
- Power steering pump
- Power steering pump reservoir
- Radiator fluid
- Battery
- Brake master cylinder
- Windshield washer reservoir
- Voltage regulator

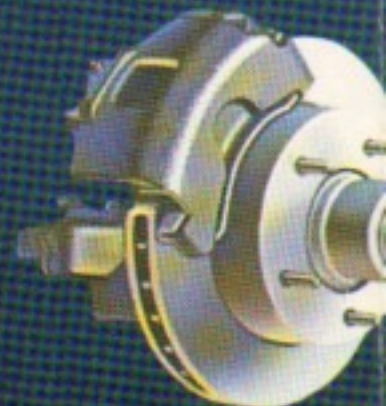
Econoline Chateau Vans shown with optional radio, Special Tu-Tone paint, insulation package, wheel covers, radio, Captain's chairs with Argyle cloth inserts and low-mount Swing-Lok Western mirrors.

SERIES	FUEL CAPACITY	GVW RATING
E-100	5100 to 5800 lb.	
E-150	6050 to 6300 lb.	
E-250	7000 to 8500 lb.	
E-350	8750 to 10,000 lb.	
Parcel Delivery Vans		
E-250	7850 lb. (E)	8500 lb.
E-350	8750 to 11,000 lb.	10,725 lb.

Removable engine cover. out-of-the-way engine cover easily removed to permit service functions. Molded insulated engine cover with clipboard and flashlight tray and change pocket.

Driver and passenger seats. The Econoline's new design clears the way for the driver or passenger load. They can easily slide seats into the cargo area. Captain's chairs pivot.

Solid state ignition system. all Ford Econolines, solid state eliminates the need for a condenser. Spark plugs last longer. Between tune-ups is 10,000 miles. Maintenance is reduced.



'75 Econoline Van with yo

HART	USABLE FUEL
UNGE	unleaded only
	regular or unleaded
	regular or unleaded
	regular or unleaded
and Cutaways	
PDV)	regular or unleaded
	regular or unleaded
(PDV)	

Improved visibility. The bigger, higher windshield (over 13 sq. ft. big with 18% more glass area) provides exceptional visibility. You can see traffic lights higher overhead, both fenders down in front.

Wiper-arm-mounted windshield washer jets. Direct placement of the washer jets provides a stream on the windshield ahead of the wiper for efficient cleaning action.

Hinged or sliding cargo door. Your choice of bigger hinged side cargo doors for '75, or a large sliding side door.

over. A compact engine cover may be removed to perform major service. The engine console has a right hand holder, ash tray and a pocket built right in. The engine can be moved forward for "walk thru." The engine is completely accessible for service to reach the engine compartment—optional for both ways.

Ignition system. Now standard on all Econolines is solid state ignition for points and contact-free. Last longer, the time between scheduled maintenance is extended.

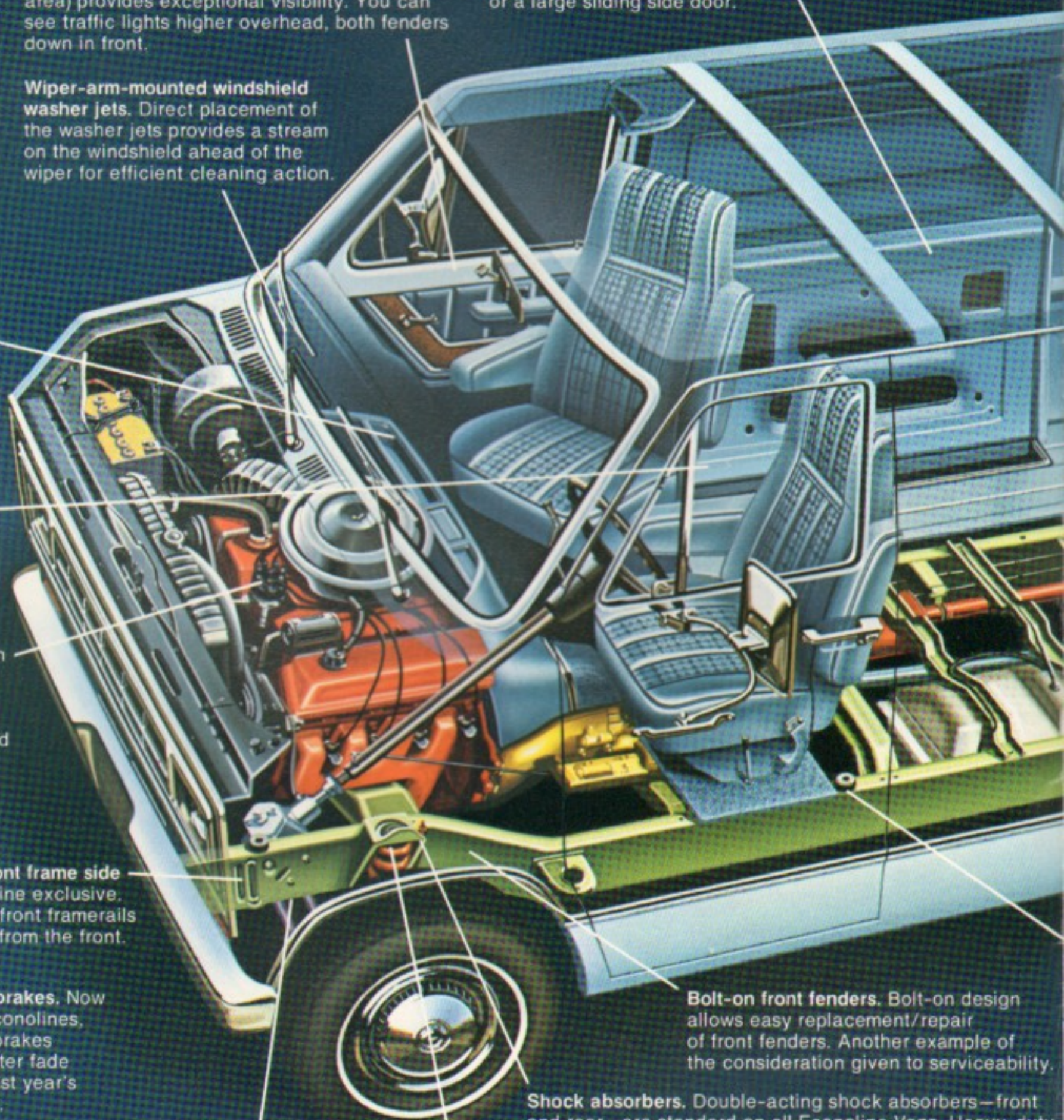
Energy-absorbing front frame side rails. Another Econoline exclusive. "Waffle" sections of front framers help cushion impact from the front.

Power front disc brakes. Now standard on all Econolines, power front disc brakes provide 20% greater fade resistance than last year's drum-type brakes.

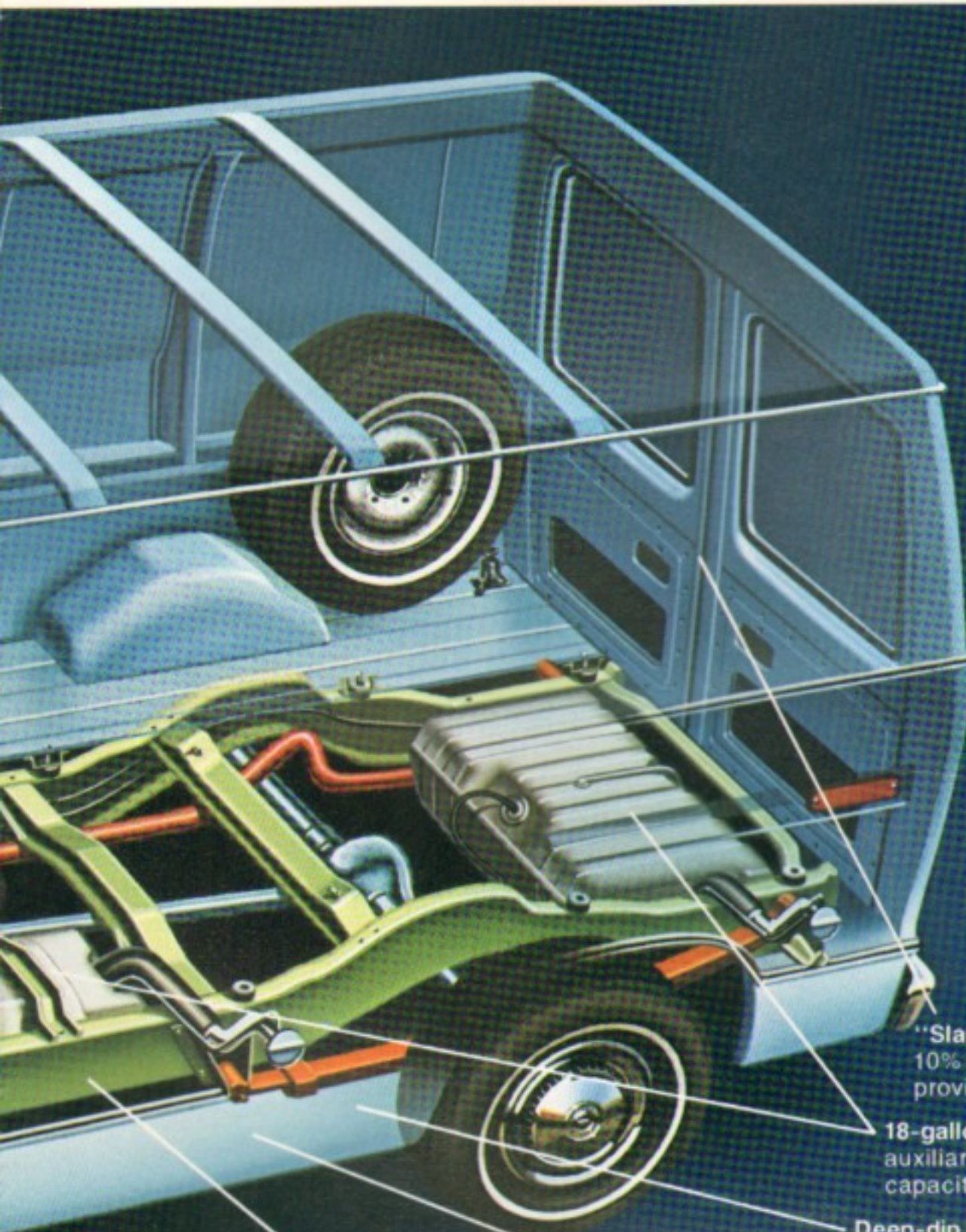
Improved Twin-I-Beam front suspension. Ford's exclusive Twin-I-Beam suspension has been made even better on the new '75 Econolines. Refined steering and suspension geometry provide easy handling and solid riding stability.

Shock absorbers. Double-acting shock absorbers—front and rear—are standard on all Econoline Vans. Heavy-duty shocks are standard on E-350 and optional on others.

Computer selected coil front springs. Computers are used to select the proper springs for rated load capacity and a smooth, comfortable ride.



ur van. Or any other van. C



A GUIDE TO ECONOLINE PAYLOADS (Including driver and passengers)		
Econoline Van (124-in. wheelbase)		
Desired loads	Series	GVW Ratings
1140 to 1700 lb.	E-100	5100 to 5700 lb.
2075 to 2320 lb.	E-150	6050 to 6300 lb.
(138-in. wheelbase)		
Desired loads	Series	GVW Ratings
1015 to 1675 lb.	E-100	5100 to 5800 lb.
1955 to 2205 lb.	E-150	6050 to 6300 lb.
2605 to 4005 lb.	E-250	7000 to 8500 lb.
4175 to 5075 lb.	E-350	8750 to 10,000 lb.
Econoline Cutaway Van (138-in. wheelbase)		
Desired loads*	Series	GVW Ratings
4610 lb.	E-250	8500 lb.
4775 to 5865 lb.	E-350	8750 to 10,000 lb.
(158-in. wheelbase)		
Desired loads*	Series	GVW Ratings
5690 to 6415 lb.	E-350	10,000 to 11,000 lb.
*Including weight of body.		
Econoline Parcel Delivery Van (138-in. wheelbase)		
Desired loads	Series	GVW Ratings
2505 lb.	E-250	7850 lb.
3055 to 4250 lb.	E-350	8750 to 10,000 lb.
(158-in. wheelbase)		
Desired loads	Series	GVW Ratings
3885 to 4335 lb.	E-350	10,000 to 10,725 lb.

"Slam shut" rear doors. New hinged rear doors are 10% wider than last year's—a full 54 inches—and provide the convenience of "slam shut" closing.

18-gallon auxiliary fuel tank. Optional auxiliary fuel tank provides a total fuel capacity of up to 42.6 gallons.

Deep-dip Electrocoat primer. Econoline bodies* are all fully immersed in primer. A high-voltage charge draws primer to the body and bonds a uniform coat of primer to the body.

Extensive galvanizing. 39 underbody components, the ones most subject to corrosion, are galvanized. These components include floor crossmembers, lower sliding door tracks and various other supports and lower panels. In addition a rust-protective zinc-rich primer is applied to 22 other body components.

More inner Van area. Cargo area increased 12 inches down the middle over last year.

Sturdy body-on-frame construction. The rugged backbone of the new Econoline is a full-length, ladder-type frame. Strong steel side rails up to 7¼ inches deep provides structural support.

Rubber body mounts. Strategically placed rubber body mounts are designed to isolate the body, driver and load from the frame. This type of isolation is not found on unitized vans.



*Except PDV cargo body.

On any basis you wish.

New Ford Parcel Delivery Vans now with 12- or 14-ft. bodies.

Ford Parcel Delivery Vans (E-250, E-350) now offer big 12- or 14-ft. long bodies, 7- and 8-ft. wide . . . for up to 4,335 pound payloads. New wheelbases of 138 and 158 inches and single or dual rear tires provide smooth riding stability.

Hinged "slam shut" rear doors swing 270° for easy loading and unloading. Rear door windows are optional, as is a big roll-up rear door. Stone shields at lower front corners

of body, interior steel wall panels, inlet and exhaust roof vents, and solid or mesh-type partitions (behind driver's compartment) with sliding door are other special Parcel Delivery Van options. 24.6-gal. fuel tank is standard. (22.1-gal. with emission control package). 18-gallon auxiliary fuel tank is optional.

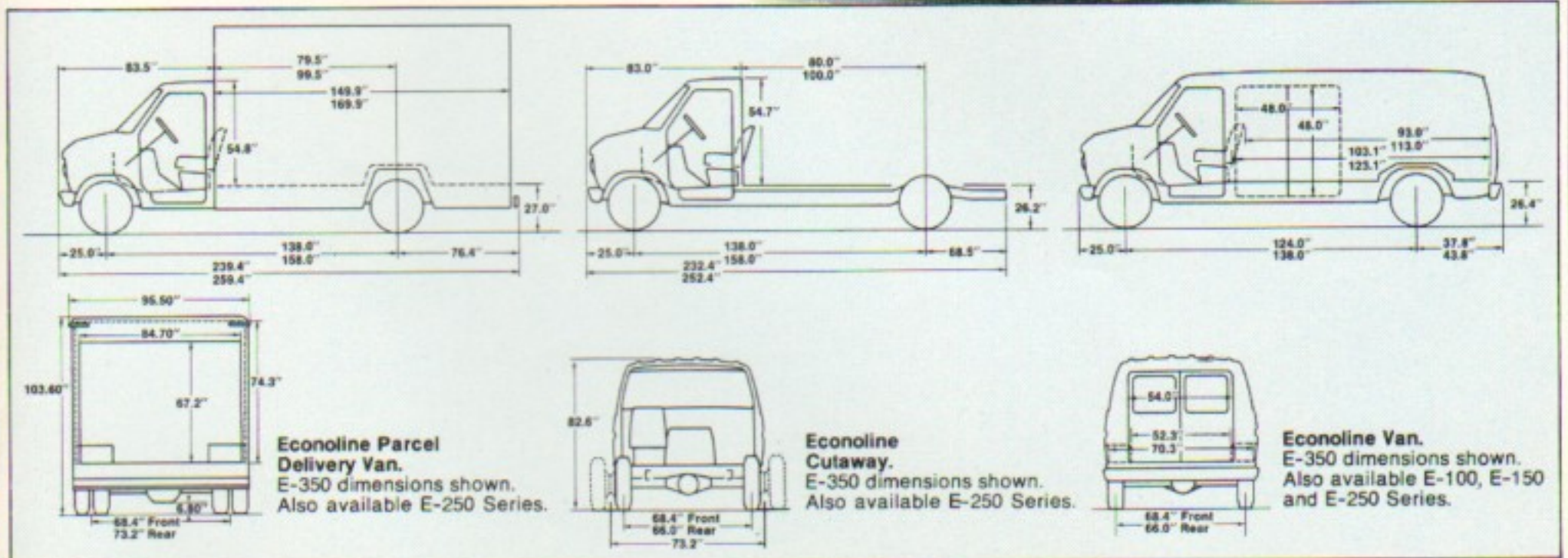
Econoline Cutaway Vans are available in E-250 and E-350 Series with 138- or 158-inch wheelbases for the installation

of motor homes up to 21 ft. long or other custom bodies. GVW's go all the way up to 11,000 pounds with dual rear tire chassis.

Special frame spacers with rubber body mounts provide a flat, cushioned and supported surface for mounting custom bodies. Four longitudinal frame spacers with eight body mounts and two lateral spacers with four body mounts are standard. Or six lateral spacers with 12 body mounts are optional . . . so your body manufacturer can pick the system best suited for installing body.



Personalized van identification is available through your Ford Dealer.



New comfort, new conveniences, new quiet, new luxury.

Step into the new Econoline. It's easy through the taller doors with wheel-housings moved forward out of the way. See how comfortable the standard full-foam contoured bucket seat is . . . or try the plush optional new Captain's chair that swivels around for you, and has fold-down armrests. Notice how much legroom there is for both the driver *and* passenger. How well-designed, attractive and functional the instrument panel is. And the "designed for people" Econoline now provides three levels of luxury to



Chateau door panel with woodgrained vinyl center insert and carpeted lower panel and optional stereo radio speaker.

choose from. To aid you in your choice, here's what you get in the top-of-the-line—Chateau.

Chateau Van features (in addition to or in place of Custom): Super Soft vinyl seat trim in blue, green or tan • color-keyed cut-pile carpeting on front floor and lower section of engine cover • padded vinyl front door trim panels with woodgrained vinyl applique in center and carpeted lower panel • woodgrained vinyl horn bar insert in steering wheel. Exterior features: bright grille, bright bumpers, bright bodyside and rear moldings.

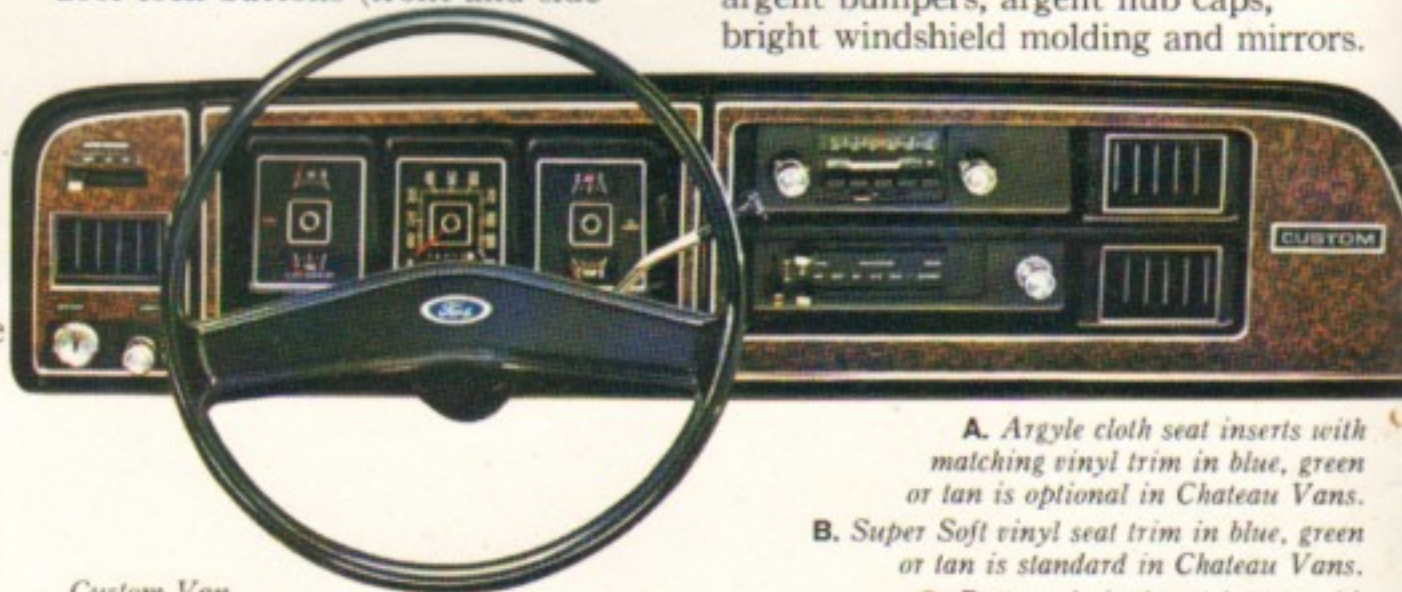
Custom Van features (in addition to or in place of standard): color-keyed padded full-length instrument panel with woodgrained vinyl applique

- color-keyed seat pedestal • color-keyed cowl-side trim panels • cigarette lighter
- color-keyed patterned vinyl front door trim panels, insulated floor mats, roof rail garnish moldings. Exterior features: bright hub caps, tail-light bezels, vent and rear window frames.
- Standard Van features:** full-foam driver's bucket seat, adjustable five inches fore and aft • color-keyed patterned vinyl seat trim in black, blue, green or tan • color-keyed seat belt with outboard retractor • color-keyed windshield trim moldings
- color-keyed engine cover with clipboard flashlight pocket and removable ash tray designed into console
- fresh air heater/defroster
- fresh air vents with blend air control • green back-lighting for instruments • 2-speed electric windshield wipers • wiper-arm-mounted washer jets • energy-absorbing sun visor on driver's side • dome lights (front and cargo) • front compartment hardboard headlining and insulated floor mat with scuff plates • push-pull door lock buttons (front and side



Comfortable full-foam bucket driver's seat is standard (Chateau super-soft seat trim shown). Captain's swivel chairs are optional (shown with Chateau Argyle cloth insert option).

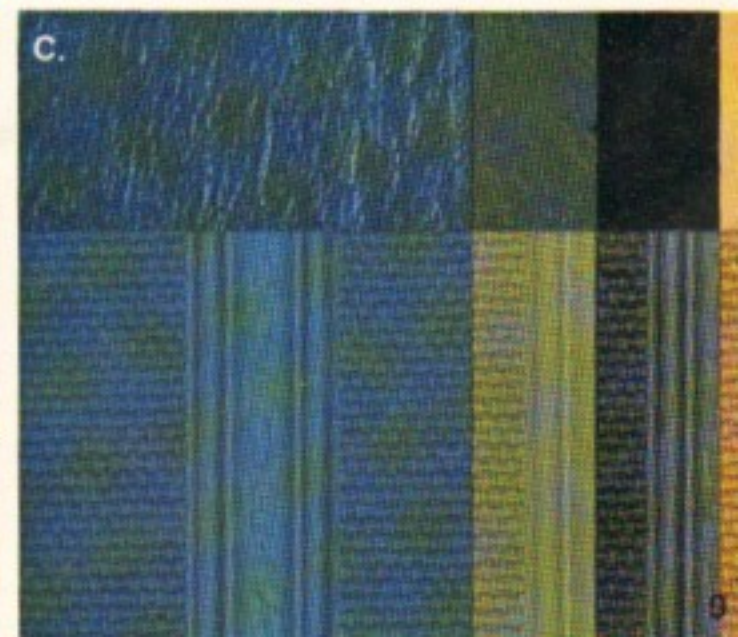
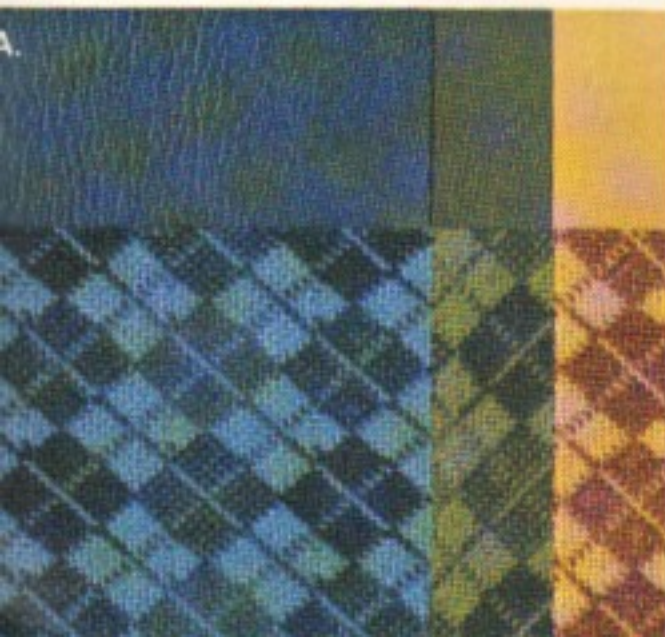
doors) for keyless locking • color-keyed armrest • coat hook • electric horn • door checks • latch release handles on side cargo doors. Exterior features: argent bumpers, argent hub caps, bright windshield molding and mirrors.



Custom Van instrument panel shown with optional SelectShift Cruise-O-Matic transmission, AM/FM Stereo Radio and air conditioning.

- A.** Argyle cloth seat inserts with matching vinyl trim in blue, green or tan is optional in Chateau Vans.
- B.** Super Soft vinyl seat trim in blue, green or tan is standard in Chateau Vans.
- C.** Patterned vinyl seat inserts with vinyl trim in blue, green, black or tan is standard in Standard and Custom Vans.

Custom Van interior with vinyl trimmed front bucket seats, vinyl door trim panels and front-compartment floor mat. This same seat is also included in Standard Van.



Functional new options for extra

Instrument package includes Fuel Monitor Warning Light (alerts you when the engine is below peak efficiency so you can adjust driving to improve fuel economy), ammeter and oil pressure gauge.

Fingertip speed control maintains preset speed for optimum operating economy and driving ease. A great convenience for long-haul trips and with mini motor homes. Control disengages when you brake or actuate switch on steering wheel horn bar.



Engines: Thrifty 300-cu. in. Six is now standard in all series, and you have a choice of 351- or 460-cu. in. V-8 engines for additional power. *And these V-8 engines are specially strengthened for truck use!* All engines feature Solid State Ignition System that reduces scheduled maintenance.

ENGINE SPECIFICATIONS			
	300 Six (std.)	351 V-8 (opt.)	460 V-8 (opt.)
Displacement	300 cu. in.	351 cu. in.	460 cu. in.
Bore & Stroke (in.)	4.00 x 3.98	4.00 x 3.50	4.36 x 3.85

Auxiliary fuel tank with electric switchover gives an additional 18-gallon fuel capacity for a total of up to 42.6 gallons. Tank is midship-mounted between sturdy frame side rails.

Interval windshield wipers (2-speed) tailor wiper action to driving conditions.



Swing-Lok Western
(6 x 10 in.)

Swing-out Recreation
(7½ x 10½ in.)

Swing-Lok low-mount Western
(7½ x 10¼ in.)

Power steering for optimum maneuvering and handling ease. Econoline's new integral system is simpler, more reliable and easier to service than a separate power cylinder system.



SelectShift Cruise-O-Matic transmission allows fully automatic or manual shifting (standard E-350).

AM/FM stereo radio with tape player provides a complete sound/entertainment system with three modes of operation—AM, FM and tape. The speakers, mounted in both doors, provide excellent sound clarity and tonal range. The tape section accepts popular eight-track cartridges. An AM radio or AM/FM stereo radio is also available.

Air conditioning for cool comfort. Integral instrument panel unit cools driver compartment. Compact and out of the way, this option includes tinted glass and insulation package. For added cooling (or heating) of the entire vehicle, new space-saving **auxiliary air conditioning** (with or without auxiliary heater) is also available. This unit is built into the left sidewall. A single control on the instrument panel allows independent control of both systems.

Captain's chair brings new comfort, convenience and luxurious style to vans. The new Captain's chair swivels and eases your way into or out of cargo area. Has comfortable, fold-down armrests. The Captain's chair also features color-keyed



Super Soft vinyl or Argyle cloth seat inserts and color-keyed pedestal cover. These individual chairs are available for both driver and passenger.



Wheel covers. These bright-metal, full wheel covers are a dressy addition to your van.

- Additional options include:** Right-side sliding cargo door • adjustable or flip-fold passenger seat • high-output heater and defroster • auxiliary hot water heater • bright grille and/or front and rear bumpers (std. Chateau) • full-length, insulated carpet or mat (138" wb. only) • Courtesy light switches, front or all doors • 2-stage door positioners for hinged cargo doors • Northland Special Package includes engine block heater, 50% (-35°F) antifreeze, 77 amp-hr battery, 60-amp. alternator and high-output heater • engine block heater (single-element 400 watt with Six, dual-element 800 watt with V-8's) • locking fuel cap • tinted glass • full-length headlining (hardboard) • dual electric horns • insulation package (included with air conditioning) • protection group (front door edge guards and front and side sliding door stepwell pads) • interior rub rails (138" wb.) • School Bus Package for 138-in. wb. Window Van • cloth insert seat trim (Chateau) • shoulder harness • spare tire and wheel • spare tire cover • bright hub caps (std. Van) • Trailer Towing Packages for Class I, II, III and IV trailers • front stabilizer bar (E-250, E-350. Std. E-250 PDV).

driving ease.



Window Van features fixed glass all around and is available in all series and trim levels.



Display Van has fixed glass in right side and rear doors. Available all series and trim levels.



Door Windows are available in rear doors and/or right side cargo doors.

One-way glass in rear side windows and rear door provides privacy and keeps van cooler. This specially darkened glass cuts solar heat transfer compared to clear glass. Option includes tinted windshield, conventional, and front door glass.

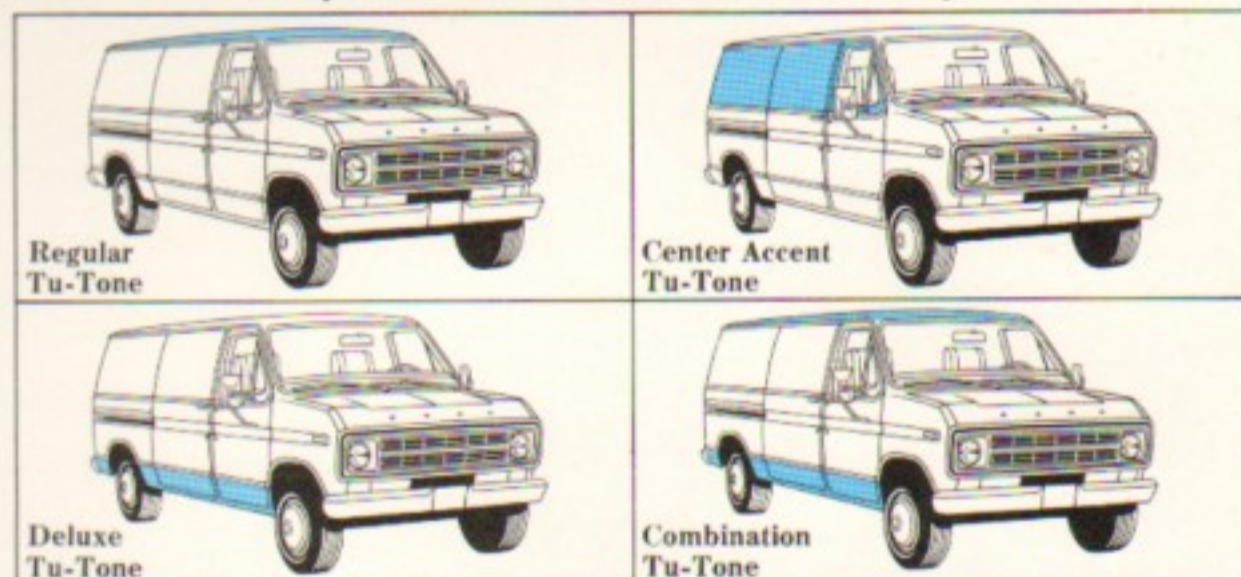


Flip-open windows are available in all cargo doors, and in the left side windows (opposite right cargo doors only) on Window Vans. Ford's flip-open van windows provide a positive hold-open lock device.



Special Tu-Tone

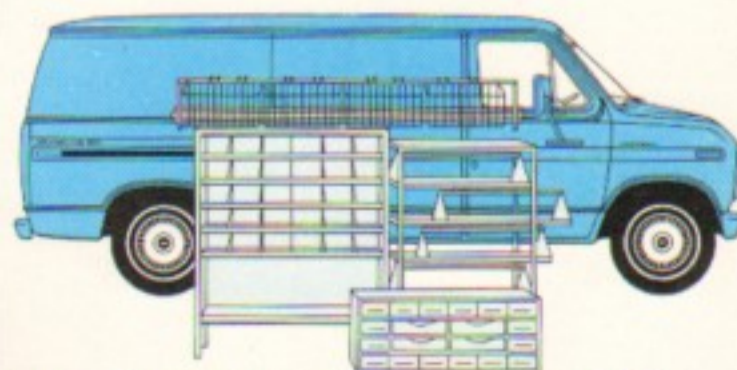
Colors and Tu-Tone combinations. The Econoline exterior paint lineup now includes: Wimbledon White, Candyapple Red, Brook Blue Metallic, Wind Blue, Hatteras Green Metallic, Baytree Green, Glen Green, Hot Ginger Metallic, Vineyard Gold, Parrot Orange, Autumn Tan and Chrome Yellow. Medium Green Glow and Medium Ginger Glow are optional colors. Five separate and distinctive Tu-Tone paint schemes are available to customize your van.



Special Tu-Tone (138-in. wb. only): accent color is applied between the drip rail and the upper bodyside moldings and below lower bodyside molding. Includes moldings.
Regular Tu-Tone: the accent color is applied to the roof.
Center Accent Tu-Tone (138-in. wb. only): Accent color is applied between the drip rail and upper bodyside moldings. Includes moldings.
Deluxe Tu-Tone (138-in. wb. only): the accent color is applied below the lower bodyside and rear molding. Side and rear molding are included.
Combination Tu-Tone (138-in. wb. only): Regular and Deluxe options are combined with the accent color applied as specified for these options.



Sliding side cargo door allows easy cargo handling in narrow alleys and against loading docks. Convenient, weather-protected inside step.



Job-engineered interior packages. Econoline Vans can be ordered with complete packages designed for many trades. Or you can "mix and match." Simply choose from a wide selection of modern modular built-ins . . . racks, shelf units, bins, baskets, etc. Units are fastened to the floor and/or body pillars to be solid and permanent, yet they are removable.



'75 Ford Club Wagons.

Ford redesigned Club Wagons, too. Now you can enjoy new room, quiet and comfort in a solid, well-built wagon that accommodates up to 12 passengers.

You have a choice of two Camper Special Packages for Econoline Cutaways. The **Low Line Camper Package** includes: 60 amp. alternator • 77 amp-hr battery • Auxiliary 81 amp-hr battery • HD shock absorbers w/ E-250 • Custom trim package • Camper wiring harness (provides constant power source)

• "Camper Special" emblem • Extra cooling package.

The **High Line Camper Special Package** includes all items in basic package along with the following in addition to or in place of

items: 90 amp. alternator • Adjustable passenger seat • External auxiliary oil cooler • Fuel monitor warning light and ammeter & oil pressure gauge • Front stabilizer bar • Dual horns • 351 V-8 engine • Chateau trim package • High output heater • Power steering • Tinted windshield and door glass.



'75 Ford Econoline Camper Package.

New Ford Cutaway Vans with Camper Special Packages are designed to readily accommodate up to 21 ft. custom motor homes that sleep up to six.

1975 Econoline Specifications

EQUIPMENT	E-100	E-150	E-250	E-350
Maximum GVW (lb.)	5800	6300	8500 (7850 PDV)	10,000 (10,725 PDV, 11,000 C)
Axle, Front: Rating (lb.)	2950	3150	4000	4200
Axle, Rear: Rating (lb.)	2750	3600	5300	7400
Brakes: Power	Std.	Std.	Std.	Std.
Clutch: Dia. (in.)—Area (in.)	11—123.7	11—123.7	11—123.7	—
Electrical: Battery (amp-hr)	41	41	41 (53 C, PDV)	53
Optional Battery (amp-hr)	77, 81 (aux.)	77, 81 (aux.)	77, 81 (aux.)	77, 81 (aux.)
Alternator (amp.)	40	40	40	40
Optional Alternator (amp.)	60 or 90†	60 or 90†	60 or 90†	60 or 90†
Engine: Displacement	300 Six	300 Six	300 Six	300 Six
Optional	351 V-8	351 V-8	351 V-8, 460 V-8	351 V-8, 460 V-8
Shock Absorbers	Front & Rear	Front & Rear	Front & Rear	HD Front & Rear
Optional	HD	HD	HD	
Springs				
Front: Coil, Computer Selected				
Min. Rating @ Ground (lb.)	1285	1360	1550 (1700 C)	1700 (1775 C, 1550 PDV)
Optional	HD Coil	HD Coil	HD Coil	HD Coil
Rear: Rating @ Ground (lb.)	1440	1850	2080 (3175 PDV, 2725 C)	2785 (3270 PDV)
Optional	1650, 1850	1950	2360, 2725, 2975, (2775 C)	3215 (3210, 3680 C)
Steering: Optional	Integral Power	Integral Power	Integral Power	Integral Power
Transmission	3-Spd. Sync	3-Spd. Sync	3-Spd. Sync*	Cruise-O-Matic
Optional	Cruise-O-Matic	Cruise-O-Matic	Cruise-O-Matic	
Wheels: Type—Rim Size	(5) 5-Hole—5.5K	(4) 5-Hole—5.5K	(4) 8-Hole—6.0 (6.75 C, PDV)	(4) 8-Hole—6.75 (6.0 C, PDV)
Tires: Tubeless	F78-15B PT	H78-15D PT	8.00 x 16.5D TT†	9.50 x 16.5D TT*
Optional	Both tubeless and tube-type—including RADIALS—in sizes to match GVW requirements. Dual rear tires are offered on E-350 Cutaway and Parcel Delivery Vans. Use adequate tires for loads and type of service. Consult your Ford Dealer.			

*Cruise-O-Matic standard C and PDV † 90 amp. N.A. w/300 Six ‡ 8.75 x 16.5E C, PDV * 8.00 x 16.5D PDV (dual rear) C=Cutaway Chassis, PDV=Parcel Delivery Van, PT=Passenger Type, TT=Truck Type

Specifications, descriptions and illustrative material contained herein were as accurate as known at the time this publication was approved for printing. Ford Division reserves the right to discontinue models or options at any time or change specifications, equipment or design without notice and without incurring obligation. Specifications are applicable to units sold in the United States, its territories and possessions and may vary outside these areas. Truck body installations and modifications are the responsibility of the body manufacturer. Owners should assure themselves of the load and handling capabilities of their vehicle when selecting a camper or contemplating custom add-ons and modifications. Some of the vehicle colors and paint combinations illustrated are special order options only. All options, accessories and whitewall tires illustrated or referred to as optional or available in this publication are at extra cost. Some options are required in combination with other options. For the price of the model with the equipment you desire or verification of specifications contained herein, see your Ford Dealer. In addition, since legal requirements and/or vehicle regulations vary from state to state, check with your local authorities and Ford Dealer for any special equipment requirements.

FORD ECONOLINE VANS

FORD DIVISION

