

FORD WHEELIN' FREE WHEELIN'



Free Wheelin' Fords.
Road machines that
get you where you
want to go...the way
you want to get there.

As you leaf through
this book, you may see
something you like.
Or perhaps you want
something personal.
Something you design
or modify. Something
that makes your
vehicle more than just
transportation. Like
some of the vehicles
shown here, which
have owner-added
accessories such as
special paint, exterior
trim items, roll bars
and more.

Ford would like to help
you and that's what
Free Wheelin' is about.





Mustang II MPG 2+2 Stallion

Stallions. With uncommon spirit.

Something decidedly different in trim and hardware that sets them apart from other cars.

Cars for the Seventies—frugal and fun to drive.

Stallions. Pinto MPG's, Mavericks and Mustang II MPG's with colorful paint masked by blackout body panels. With blackout grilles, wiper arms, window moldings. And styled steel wheels.

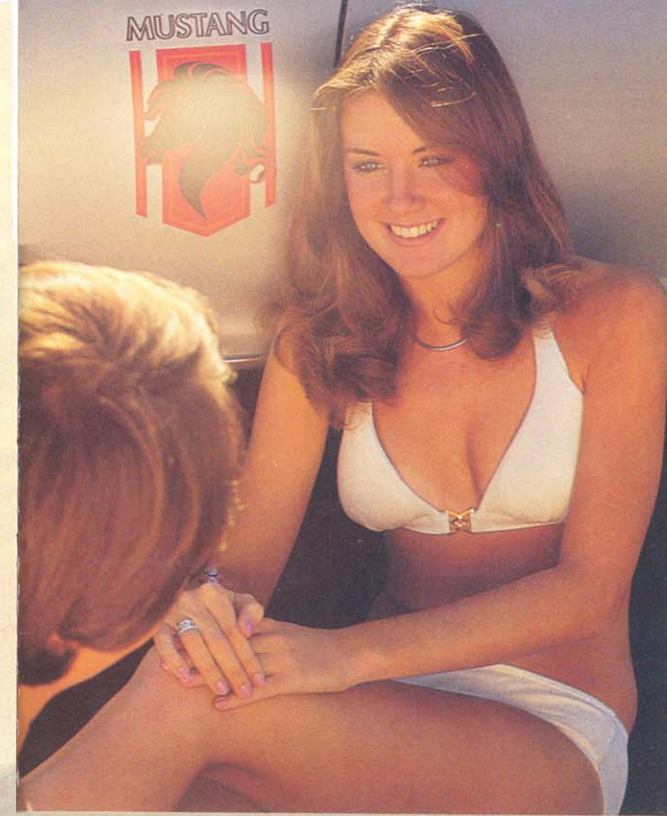
Pinto MPG and Maverick Stallions with racing mirrors, special tires, handling suspension.

Mustang II MPG Stallions with a basic decor to which you add your own special effects—when you want, the way you want.

Add the other good things you've always wanted from the many we offer (pages 18 and 19).

Sailing. Soaring. Hiking. Biking. Whatever you do. Pick a spirited Stallion and make it fit your ways.

Stallions. Unusual, inexpensive versions of Ford's small cars.



Maverick Stallion



Pinto MPG 3-Door Runabout Stallion



Cobra strikes again. Cobra II.

In 1965, a Texan named Carroll Shelby introduced his Mustang Cobra. In a word: overpowering. Based on Mustang's solid roadability, the Shelby Cobra included refinements that made it a road racing legend.

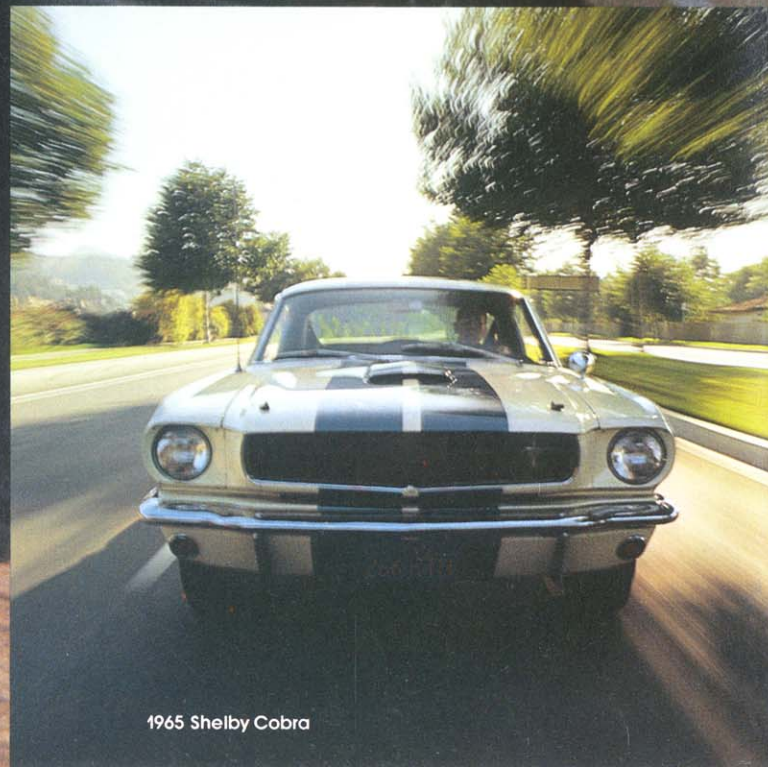
Now, Cobra II. Ford's Mustang II wrapped in an appearance package that does justice to the Cobra name. So striking it's already a sales success.

Cobra II starts with 1976 Mustang II MPG standards like rack and pinion steering, front disc brakes, 2.3

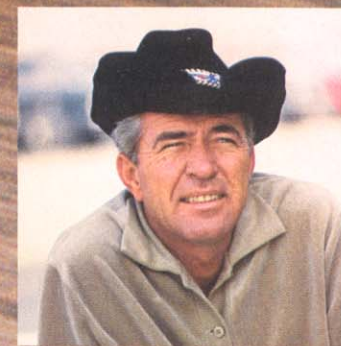
liter OHC 2V four-cylinder engine. For more punch, order 2.8 liter 2V V-6 or 302 CID 2V V-8.

Then the following special Cobra II equipment is added: bold racing stripes, blackout grille, racing mirrors, rear quarter window louvers, front air dam, rear decklid spoiler, brushed aluminum instrument panel and door appliques, Cobra insignia. On the road ... styled steel wheels with Cobra logo and trim rings, plus BR70 RWL steel-belted radials.

Cobra II. With the look of the legendary Cobra. Cobra strikes again.



1965 Shelby Cobra



Carroll Shelby

Truckin'.

It was back in '61 those little 90-inch wheel-base Ford vans first came on the scene. Others soon followed and in a few years, vans really began to happen.

Then, in '69, Ford introduced an Econoline Van with the engine shoved forward for more room. Again, the others followed.

For '76, it's another "again." The Econoline Van engine is even farther forward for more inside room (in 124" or 138" wheelbases). It has new body-on-frame construction to help dampen road noise and vibration. And proven Ford Twin-I-Beam front suspension has been redesigned for better ride and handling.

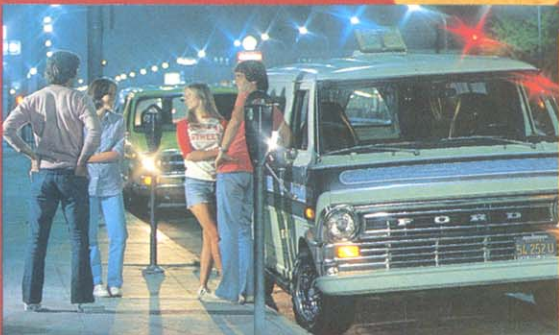
For power, a choice of 300 Six (standard), rugged 351 V-8 or the biggest-in-the-industry 460 V-8.

Ford van options include AM/FM stereo tape system, Cruise Control, dual batteries, auxiliary fuel tank, high-back Captain's Chairs that swivel and darkened privacy glass in rear windows.

There's more to truckin' than factory equipment and options. Like our Econoline Vans shown here, truckin' means imagination expressed in special paint, wheels, tires, shag carpeting and all the rest. Add your great ideas to ours.



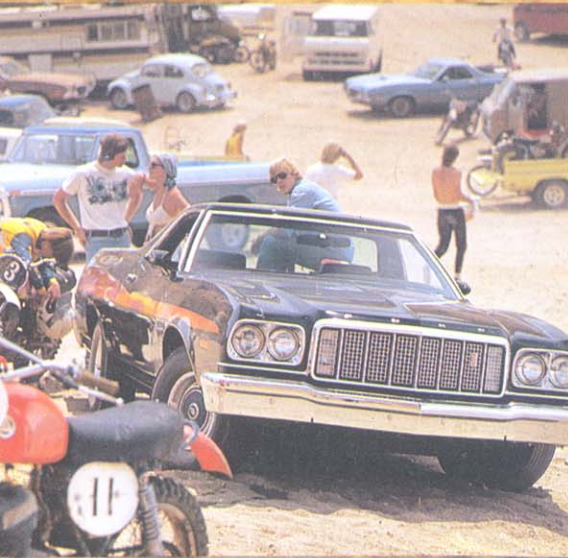
E-100 Econoline Van



1974 Econoline Van



E-100 Econoline Van



Ranchero



F-150 Styleside



Ford pickups.
Haul it your way.

Once pickups were used only for work. Today's pickups are just as likely to be primary transportation.

Ford has been into pickups for a long time — our history of building rugged trucks goes back way beyond the sanitary '54 shown here. We still build them tough but one thing has changed. It's choice. We offer you more models for more needs than ever. The F-100's, for instance,

choose Styleside or new Flareside "Shorty" shown here.

Pick the new Ford Courier or a pickup that looks and rides like a car: Ranchero. Pickups with muscles — F-100's, 150's or the "King Kong" F-250 (also as 4x4's). And with the addition of a little paint here and there Ford makes for some heavy hauling.



F-100 Flareside



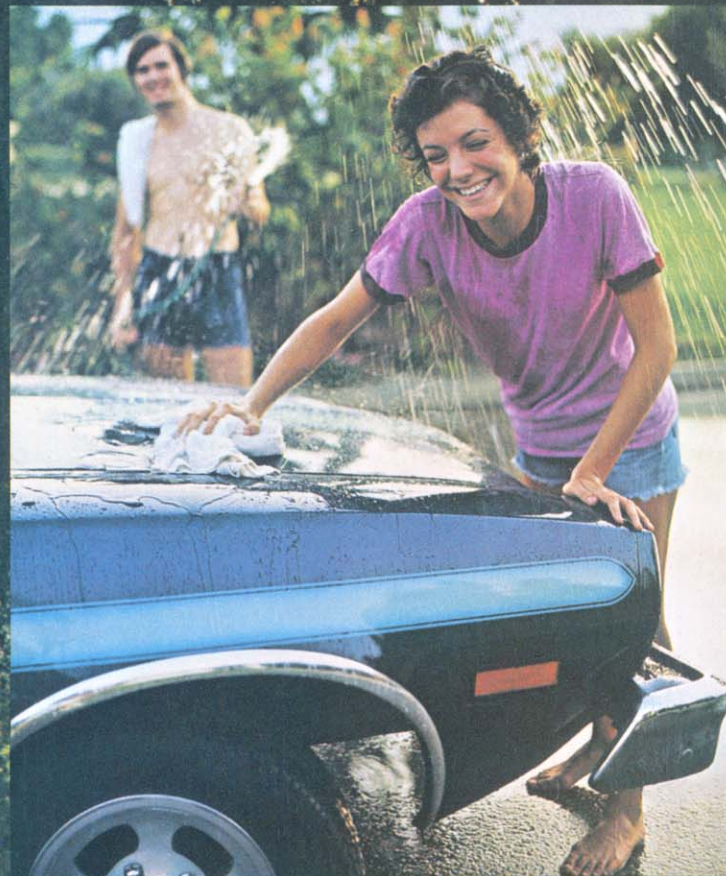
1954 Ford Pickup



Ford Courier



Pinto MPG 3-Door Runabout



Open end vehicles.

Easy to dress up, or change to suit your own taste and needs.

The cars shown here are good examples. Their owners found these Fords right... just right for adding their own glitter.

Like the Pinto MPG 3-Door Runabout shown with a shuttered-look provided by the owner. The new Silver Torino with owner-added blackout grille. A new factory-version Granada

2-Door Sports Sedan: shown in black with black half-vinyl roof, gold accents and gold-matched styled steel wheels. Or something more ambitious, like the Pinto MPG Wagon conversion to mini-van.

You get the idea. And if you've got some ideas you want to see on wheels, start with Ford.



Torino 2-Door Hardtop

Granada 2-Door Sport Sedan



Maverick 2-Door Sedan

Mustang II MPG Hardtop Stallion

Pinto MPG Wagon



Mustang II

**"Any customer can have a car painted any color he wants so long as it is black."
—Henry Ford, 1912**

Not much choice back then. Today, vehicles are in stripes, tones, shades and murals.

But black is strong as ever. Like the all-black Mustang II above with blackout grille, wipers and window moldings, styled steel wheels.

Or this classic black Mustang II MPG 2+2 with bright grille, window moldings, and wheel covers. Plus 2.3 liter OHC 2V 4-cylinder engine.

MPG Hardtop model also available shown on page 13.

Go colorful and bright, if you prefer. Like the Red Mach I shown. Or in almost any color you choose, with bright grille and moldings. Black lower body-sides, bumpers and back panel. Color-keyed dual remote control mirrors. Styled steel wheels and trim rings. RWL wide-oval steel-belted radials. 2.8 liter 2V V-6 engine. All are Mach I standard features.

Whether it's color, performance, wheels, whatever... you can make your own moving statement with Ford.



Mustang II MPG 2+2



Mustang II Mach I





**Joy in Mudville.
Ford 4 x 4's.**

Lean machines for twisting around trees or barging across boulder-strewn streams. Drive away from it all in a fully-equipped Sport Bronco (detailed on Page 22) shown below with Special Decor Group. Or wind up with a Baja-prepared version (shown at right).

Then there's our time- and torture-tested toughie, the F-250 4 x 4 for taking you, yours and gear off-road. The F-100 4 x 4 has integral power steering included in a long list of options. The new F-150 4 x 4 has a 300 CID Six that burns any kind of gas.

Wherever you go in your off-road Ford, we know you'll treat the areas as well-kept secrets. So no one will know you were there.



Sport Bronco



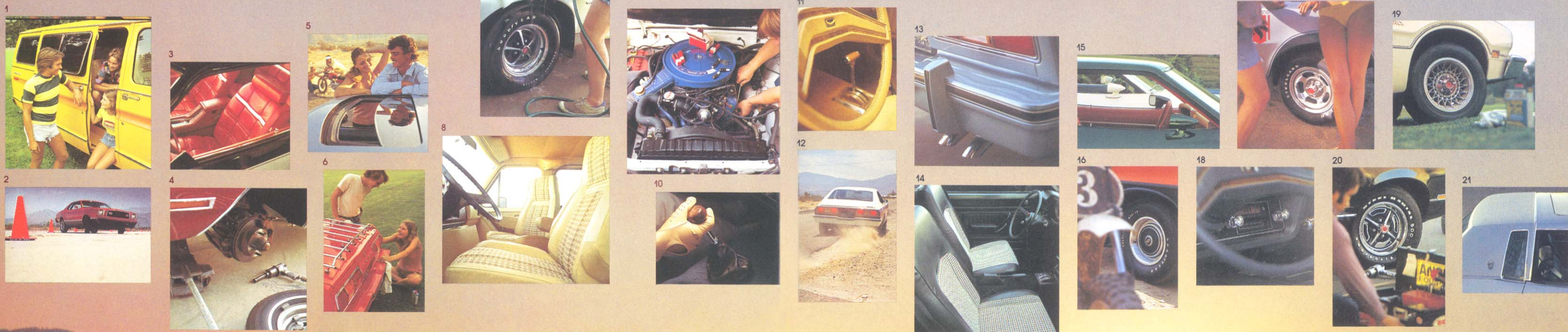
F-100 4 x 4



Baja-prepared Bronco



F-250 4 x 4



Options can mean a lot.

Eversit smoldering in a van waiting for traffic to move? Or in the ski lodge parking lot instead of on the slopes as your vehicle fought for traction?

The 1976 Ford options shown on these pages are a small sampling of what's

available. Availability and application vary according to vehicle. Consult the literature on the individual Ford of your choice for a more complete listing. See your dealer for his help and prices.

Some of the things Ford offers: **1.** Privacy Glass for Econoline Vans and Club Wagons. Also: roof vents. **2.** Heavy-duty suspension for a firmer ride on rough roads and terrain. For trailer towing and loads, air shocks with instrument panel

control. **3.** Low-back bucket seats in a variety of coverings are available on some Ford models (shown here in a Mustang II). Center console for Mustang II. These are available on many '76 Fords with bucket seats and floor-mounted transmission shift lever. **4.** Power front disc brakes are standard on many vehicles, available on others.

4-wheel disc brakes are available on Granada. **5.** Moonroof and Sunroof for Mustang II, Granada, Torino and other Fords. **6.** Rear deck luggage racks to take more of what you want with you. **7.** Magnum 500 wheels with trim rings for Torino and Ranchero are merely one example of the wide variety available from Ford. **8.** Captain's Chairs that swivel (for vans and Club Wagons) for relaxing comfort.

9. 302 CID V-8 adds punch. One of a selection of V-8's available. **10.** Floor shifting is available on many models. Four-speed shifting is part of precise control that is standard on Mustang II's and Pintos. **11.** Leather-wrapped steering wheel is more than looks—more comfortable and a surer grip. **12.** Traction-Lok puts engine power to the rear wheel with the most traction to get you out of slippery spots more easily.

13. Rallye Package on Mustang II with Traction-Lok, competition suspension, extra cooling package and more. Includes chrome dual exhaust extension. **14.** High-back buckets with cloth inserts. One of many great interiors available for all tastes, for any choice. **15.** Dual color-keyed racing mirrors. They're tough to knock out of position in parking lots or the car wash.

16. Ranchero trim rings and hub caps. One of many ways to brighten up. **17.** Forged aluminum wheels. Before visiting the custom shop, look at Ford's full range of fancy wheels. **18.** Don't put up with Wacky Wilbur and his madcap soundmen doing a Marconi in your vehicle. A Ford radio is engineered to perform well in Ford vehicles. This one has it all. AM/FM stereo and tape player. **19.** Outclass the more expensive cars with

lacy spoke wheels as shown on Granada. **20.** For more style on the road: styled steel wheels and trim rings. **21.** New half vinyl roof and fixed opera window. Again, these are only a sampling. See your individual car catalogs for more complete details. Check your dealer for availability and ask for his catalog that illustrates and describes the many dealer-installed accessories.





VEHICLE	FUNCTIONAL							HANDLING			MEASUREMENTS					
	Engine	Transmission	MPG*		Brakes	Steering		Suspension	Wheels	Tires	Wheelbase	Length	Height	Width	Trunk/Cargo (cu. ft.)	Curb Weight (lbs.)
			Highway	City		Ratio	Turning Circle									
Pinto Pony MPG	2.3 Liter 2V Four—Std.	4-Spd. Man.—Std.	38	25	Front—Disc Rear—Drum	24.1:1	30.7'	Front—Ind. Short/Long Arm with Ball Joints Rear—Leaf Springs	4-Stud 13 x 5.0JJ	A78	94.5"	169.0"	50.6"	69.4"	6.3	2558
Pinto	2.3 Liter 2V Four—Std.	4-Spd. Man.—Std.	35	24	Front—Disc Rear—Drum	24.1:1	30.7'	Front—Ind. Short/Long Arm with Ball Joints Rear—Leaf Springs	4-Stud 13 x 5.0JJ	A78 w/ 2.3 Liter B78-13 w/ 2.8 Liter	94.5"	169.0"	50.6"	69.4"	6.3—2-Dr. 29.0—3-Dr.	2562—2-Dr. 2598—3-Dr.
	MPG	2.8 Liter 2V V-6—Opt.	Cruise-O-Matic—Opt. 4-Cyl., reqd. w/V-6													
Pinto Wagon	2.3 Liter 2V Four—Std.	4-Spd. Man.—Std.	34	24	Front—Disc Rear—Drum	24.1:1	30.7'	Front—Ind. Short/Long Arm with Ball Joints Rear—Leaf Springs	4-Stud 13 x 5.0JJ	B78-13	94.8"	178.8"	52.0"	69.7"	57.2	2756
	MPG	2.8 Liter 2V V-6—Opt.	Cruise-O-Matic—Opt. 4-Cyl., reqd. w/V-6													
Maverick	200 CID 1V Six—Std.	3-Spd. Man.—Std.	30	22	Front—Disc Rear—Drum	29.4:1—Man. 21.3:1—Power	36.3'	Front—Ind. Short/Long Arm with Ball Joints Rear—Leaf Springs	5-Stud 14 x 6.0JJ	C78-14	103.0"	187.0"	52.9"	70.5"	11.3	2980—2-Dr. 3080—4-Dr.
		250 CID 1V Six—Opt. 302 CID 2V V-8—Opt.	Cruise-O-Matic—Opt.													
Mustang II	2.3 Liter 2V Four—Std.	4-Spd. Man.—Std.	34	24	Front—Disc Rear—Drum	24.2:1—Man. 19.0:1—Power	36.3'—Man. 36.6'—Power	Front—Ind. Short/Long Arm with Ball Joints Rear—Leaf Springs	4-Stud 13 x 5.0JJ	B78-13 (BR70 RWL on Mach 1 & Cobra II)	96.2"	175.0"	50.0"	70.2"	6.7—2-Dr. 22.8—3-Dr.	2779—2-Dr. 2807—3-Dr. 2931—Mach 1
	MPG	2.8 Liter 2V V-6—Opt. 302 CID 2V V-8—Opt.	Cruise-O-Matic—Opt. 4-Cyl. & V-6, reqd. w/V-8													
Granada	200 CID 1V Six—Std.	3-Spd. Man.—Std.	30	22	Front—Disc Rear—Drum	29.4:1—Man. 21.3:1—Power	39.4'—Man. 39.7'—Power	Front—Ind. Short/Long Arm with Ball Joints Rear—Leaf Springs	5-Stud 14 x 6.0JJ	DR78x14	109.9"	197.7"	53.3"	74.0"	14.4	3335—2-Dr. 3393—4-Dr.
		250 CID 1V Six—Opt. 302 CID 2V V-8—Opt. 351 CID 2V V-8—Opt.	Cruise-O-Matic—Opt. w/200, 250 & 302; reqd. w/351													
Torino	351 CID 2V V-8—Std.	Cruise-O-Matic—Std.	19	13	Power Assist—Std. Front—Disc Rear—Drum	21.76:1	41.3'	Front—Ind. Short/Long Arm with Ball Joints Rear—Coil Springs	5-Stud 14 x 5.5JJ	HR78-14B	114"	214.1"	52.6"	79.3"	16.5	4137—2-Dr. 4220—4-Dr.
			400 CID 2V V-8—Opt. 460 CID 4V V-8—Opt.													
Ranchero	351 CID 2V V-8—Std.	Cruise-O-Matic—Std.	19	13	Power Assist—Std. Front—Disc Rear—Drum	21.76:1	41.3'	Front—Ind. Short/Long Arm with Ball Joints Rear—Coil Springs	5-Stud 14 x 5.5JJ	G78-14B	118"	218.6"	53.7"	79.0"	78.4" (length)	4073
			400 CID 2V V-8—Opt. 460 CID 4V V-8—Opt.													
Courier	1800-CC Four—Std.	4-Spd. Man. Fully Synchronized	25	19	Front—Drum Rear—Drum	17.6:1	35.3'	Front—Ind. Short/Long Arm with Ball Joints Rear—Leaf Springs	6-Stud 14 x 4.5J	6.00-14	104.3"	172"	61.6"	51.2"	74.5" (length)	5480GVW
Pickups	F-100	300 CID 2V Six—Std.	3-Spd. Man.—Std.	24	Front—Disc Rear—Drum	24.0:1	47.0'	Front—Twin-I-Beam Front Axle w/ Coil Springs Rear—Long Leaf Springs	15 x 5.5K	G78-15B	117"/133"	194.8"/211.0"	70.3"/70.5"	74.6"	length 6-3/4' & 8'	4600GVW
	F-150	300 CID 2V Six—Std.	3-Spd. Man.—Std.			24.0:1	47.0'		15 x 5.5K	L78-15D	117"/133"	194.8"/211.0"	71.2"	74.6"	6-3/4' & 8'	6050GVW
	F-250	300 CID 2V Six—Std.	3-Spd. Man.—Std.			24.0:1	53.0'		16.5 x 6.0	8.00 x 16.5D	133"	211.0"	71.3"	74.6"	6-3/4' & 8'	6200GVW
	F-350	360 CID 2V V-8—Std.	4-Spd. Man.—Std.			24.0:1	56.3'		16.5 x 6.75	8.75 x 16.5E	140"	210.9"	72.9"	74.6"	6-3/4' & 8'	6650GVW
Bronco	302 CID 2V V-8—Std.	3-Spd. Man. w/4WD—Std.	24	16	Front—Drum Rear—Drum Front—Disc —Opt.	24.0:1	33.9'	Front—Mono-Beam with Coil Springs Rear—Long Leaf Springs	5-Stud 15 x 5.5K	E78 x 15B	92.0"	152.1"	70.1"	69.1"	46.8" Length To Top Rear Of Front Seat	4400GVW
		Cruise-O-Matic—Opt.														
Econoline Van—E-100	300 CID 2V Six—Std.	3-Spd. Man.—Std.	23	17	Front—Disc Rear—Drum	24.0:1	44.3'	Front—Twin-I-Beam Front Axle with Computer Selected Coil Springs Rear—Long Leaf Springs	15 x 5.5K	F78 x 15B	124"	186.8"	79.2"	79.8"	233	5100GVW
	351 CID 2V V-8—Opt.	Cruise-O-Matic—Opt.					48.4' (138" Wb.)				138"	206"	79.1"			

*Mileage figures are EPA estimates highway/city for the highest mileage models in that particular vehicle line—with base engine, transmission and axle ratios. Mileage ratings are lower on other engine combinations. Your actual mileage will vary depending on the type of driving you do, your driving habits, your car's condition, and optional equipment. EPA figures for pickups are based on F-100 with base engine, transmission and axle ratios.

Standard Features.

Pinto Pony MPG 2-Door Sedan.

FUNCTIONAL—2.3 liter OHC 2V 4-cyl. engine with solid state ignition • Fully synchronized 4-speed manual transmission with floor-mounted shift • Rack and pinion steering • Front disc brakes • BSW bias-ply tires • Hand-operated parking brake • DirectAir ventilation • Inside hood release • Ford Lifeguard Design Safety Features.

APPEARANCE & COMFORT—All-vinyl or cloth and vinyl high-back front bucket seats • Color-keyed carpeting • Mini-console.

Pinto MPG 2-Door Sedan and 3-Door Runabout.

All of the above with these differences and additions: Bright drip and belt moldings • Bright headlight bezels and front lip hood moldings • Bright backlite and windshield moldings • Rear liftgate • Fold-down rear seat (Runabout).

Pinto MPG Stallion.

All of the above with these differences and additions: Black grille, wiper arms and windshield moldings • Black cowl top, door frames, drip rail, rocker panel area • Black third door and lower back panel • Stallion decals • Dual remote control mirrors • Styled steel wheels • Bias-ply RWL tires • Handling suspension.

Pinto MPG Wagon.

All of the Pinto 3-Door Runabout features with these differences and additions: Full upswinging liftgate with fixed backlite and liftgate open warning light • Pivoting quarter window • Bright window moldings.

Maverick.

FUNCTIONAL—200 CID 1V Six with solid state ignition • Manual 3-speed fully synchronized transmission with column shift • Recirculating-ball type steering • Front disc brakes • Foot-operated parking brake • Bias-ply 14" BSW tires • Heater/defroster • DirectAir ventilation • Door-operated courtesy light • Lockable glove box • Flipper rear quarter windows • Ford Lifeguard Design Safety Features, including side door beam, protective bumper system and others.

APPEARANCE & COMFORT—Full-width bench seat • Random stripe cloth and vinyl trim • Color-keyed 12-oz.

cut-pile carpeting • Integral-type armrest with door pull assist handle • Color-keyed steering wheel and column • Curved ventless side glass • Bright drip rail and wheel lip moldings • Bright hub caps w/blackout center.

Maverick 2-Door Stallion.

All of the above with these differences and additions: Blackout grille and hood treatment • Black moldings on windshield and wipers, rear window • Unique roof, deck lid and lower body black paint/tape treatment • Stallion decals • Dual color-keyed racing mirrors • Deluxe fuel cap • Styled steel wheels • Raised white letter steel-belted radial tires • Handling suspension • Five exterior color choices: Silver Metallic, Bright Red, Bright Yellow, Polar White, Silver Blue Glow (extra cost).

Mustang II MPG Hardtop.

FUNCTIONAL—2.3 liter OHC 2V 4-cylinder engine with solid state ignition • 4-speed manual fully synchronized transmission with floor-mounted shift • Rack and pinion steering • Turn signal mounted windshield wiper/washer controls • Front disc brakes • Color-keyed urethane bumpers • Tachometer • Fuel, ammeter, temperature gauges • BSW bias-ply tires • Ford Lifeguard Design Safety Features.

APPEARANCE & COMFORT—Low-back bucket seats with all-vinyl trim • European-type armrests • Color-keyed cut-pile carpeting • Burled walnut woodtone accents • Bright windshield, rear window, drip, belt and center pillar moldings • Wheel covers.

Mustang II MPG 2+2.

All of the above with these differences and additions: Fold-down rear seat and upswinging liftgate.

Mustang II Stallion.

All of the above for Hardtop and 2+2 with these differences and additions: Black grille and surround molding • Black moldings and wiper arms • Bright lower body side molding • Stallion decals • Black-painted lower fenders, lower doors, lower quarter panels, lower front and rear bumpers • Black-painted rocker panels • Styled steel wheels.

Mustang II Mach 1.

All of the Mustang II 2+2 features with these differences and additions: Fold-down rear seat and upswinging liftgate • Raised white letter wide-oval steel-belted radials • Black lower bodyside paint.

black deck lid paint stripe, black front/rear lower bumpers • Styled steel wheels with trim rings • Dual remote control mirrors • 2.8 liter V-6 with solid state ignition.

Mustang II Cobra II.

All of the Mustang II 2+2 features with these differences and additions: Dual color-keyed racing mirrors • Front air dam • Blackout grille • Non-functional hood scoop • Quarter window louvers • Rear spoiler • Cobra identification on front fenders, quarter windows, rear spoiler, wheel centers • Dual accent stripes carried the entire length of the car, over hood, roof, deck lid and rear spoiler • Brushed metal appliques on instrument panel and door trim panels • Styled steel wheels • BR70 RWL steel-belted radial tires.

Granada.

FUNCTIONAL—200 CID Six engine with solid state ignition • Fully synchronized 3-speed manual transmission with column shift • Manual front disc brakes • Articulated windshield wipers • Turn-signal mounted wiper/washer controls • Tri-color taillights • BSW steel-belted radials • Anti-theft deck lid lock • Inside hood release hinges • All Ford Lifeguard Design Safety Features.

APPEARANCE & COMFORT—Chrome-plated grille • Opera windows and bright moldings • Hood ornament • Bright window, drip, belt and wheel lip moldings • Bench seats with vinyl trim • Cut-pile carpeting • Instrument panel woodtone appliques • Lockable glove box • Cigar lighter • Rear seat ash trays • Luggage compartment mat • Sound and ride packages • Full wheel covers • Exposed gas cap.

Granada Sports Sedan.

All of the functional Granada (2-Door) features above, plus heavy-duty suspension and floor shift.

APPEARANCE & COMFORT—Half vinyl roof (gold, black or white) • Exterior color choices (black, white or dark brown) • Color-keyed racing mirrors and back panel • Gold accent stripes • Bright rocker panel molding • Styled steel wheels with gold accents and trim rings • Reclining individual front seats with woven vinyl inserts • Deluxe door trim • Leather wrapped steering wheel.

Torino

FUNCTIONAL—351 CID 2V V-8 with solid state ignition • SelectShift Cruise-O-Matic transmission • Power steering

• Power front disc brakes • Gas-saving steel-belted radial ply tires • Heater/defroster • DirectAir ventilation • Inside hood release • Wiper-mounted windshield washers • Dual headlamps • All Ford Lifeguard Design Safety Features, including side door beams and protective bumper system.

APPEARANCE & COMFORT—Full-width bench seat • Linares cloth and vinyl trim • Color-keyed 12-oz. cut-pile carpeting • Two-spoke steering wheel • Day/night rearview mirror • Trunk mat • Bright and argent grille • Bright belt, drip and quarter window and windshield moldings • Hub caps • Distinctive "Torino" identification.

Ranchero.

All of the Gran Torino features and the following differences and additions: 6.5-foot cargo bed with double-wall construction • Low tailgate height, with tailgate counterbalance for one-hand operation • Four convenient cargo tie-downs at front and rear on both sides of cargo area.

Ford Courier.

FUNCTIONAL—1800 cc 4-cylinder OHC engine • 4-speed fully synchronized transmission with floor-mounted shift • Full-width bench seat with vinyl covering • Hinged seat back for access to behind-the-seat storage • 1400-pound payload.

APPEARANCE & COMFORT—Full vinyl headliner • Door panels with armrests • Additional storage under glove box • Bright front bumper, grille and hub caps • 11 cargo tie-downs.

F-100 and F-150 4x4 Pickup.

FUNCTIONAL—360 CID 2V V-8 on F-100 4x4, 300 CID 2V Six on F-150 4x4 • 4-speed transmission • I-Beam suspension • 3" wide rear leaf springs • Double-wall cargo box • Curved pickup bed for easy cleaning.

APPEARANCE & COMFORT—Fresh air heater/defroster • Color-keyed molded door trim panels with integral armrests and built-in paddle-type door handles • In-cab storage area behind front seatback • Dome light with door courtesy light switches • Steering linkage shock absorber.

F-250 4x4 Pickup.

All of the F-100 4x4 (except engine) standard equipment with the following differences and additions: 3550-lb. front axle with long leaf springs • 2 1/4"-wide rear leaf springs.

Sport Bronco.

FUNCTIONAL—302 2V V-8 with solid state ignition • 3-speed fully synchronized transmission with column shift • 4-wheel drive • Mono-Beam front suspension • Heavy-duty front axle • Steering linkage shock absorber.

APPEARANCE & COMFORT—

Fresh air heater/defroster • Lockable glove compartment • Dome light • Padded instrument panel • Vinyl door trim panels with bright moldings • Hardboard headliner with bright retainers • Vinyl parchment floor mats with bright retainers • Steering wheel with woodtone horn pad • Bright metal windshield and window frames • Bright grilled frame molding and tailgate release handle • Bright headlight, side marker light and rear reflector bezels • Bright bumpers • Bright front bumper guards • Bright metal wheel covers.

BRONCO SPECIAL DECOR GROUP (available on Standard and Sport Broncos) —includes black painted grille with black background • Solid exterior paint • Special tape stripe on hood and bodysides • Plus these Sport Bronco items (when ordered on Standard Bronco): bright window moldings • Wheel covers.

Econoline Van.

FUNCTIONAL—300 CID Six with solid state ignition • 3-speed fully synchronized transmission • Sliding or hinged side door.

APPEARANCE & COMFORT—Full-foam driver's bucket seat, adjustable five inches fore and aft • Color-keyed vinyl trim • Color-keyed windshield trim moldings • Fresh air heater/defroster • Dome lights for front and cargo areas.

Notes:

AFTERMARKET ITEMS. Many of the items shown on vehicles in this book are available through retail organizations and establishments not connected with the Ford Motor Company. Availability, price, quality, durability of these items rest solely with their manufacturer and sales organization.

PRODUCT CHANGES. Information presented was correct when approved for printing. Ford Division reserves the right to change specifications any time without incurring obligations.

AVAILABILITY. Some features presented are optional at extra cost. Some options are required in combination with other options. Availability of some models and features described may be subject to slight delay. Ask your Ford Dealer for the latest information on options, prices and availability.

FUEL WARNING. Your car engine is designed to run on UNLEADED FUEL ONLY (cars sold in U.S.A.). Leaded fuel can damage the catalytic converter and affect other emission control components.

We're hoping you will consider Ford when you buy your next vehicle. For the standard features and options we offer. And for the things you can do with our cars and trucks.

The Fords in this book are designed to do the job well, yet be what you want them to be. You'll find they ride and handle surely, they're economical to own and drive. They'll help you get the most out of them.

Why not visit a Ford Dealer for a look into the kind of Free Wheelin' road machine that suits you. One that will get you where you want to go...the way you want to get there.

The closer you look, the better we look.

FORD



FORD DIVISION

Litho in U.S.A.
192 10/75

