

CHRYSLER



CAN INSPIRATION
REDEFINE
THE MEANING
OF SUV?
YES.



2005 CHRYSLER PACIFICA - THE SAFETY UTILITY VEHICLE

See how Chrysler Pacifica blends performance and personality

- Interior and Exterior Features
- Color Options
- Conveniences

For more information, please visit www.chrysler.com/crossfire



FIVE STAR ★★★★★

Pacifica has earned the U.S. government's highest front and side crash rating, Five Stars*.



Pacifica is the first Chrysler vehicle to pass through the Chrysler Development System's Quality Gates — a series of high-standard checkpoint tasks and accomplishments required for a vehicle to make it to the road. When the National Highway Traffic Safety Administration (NHTSA) put it through its paces and Chrysler Pacifica received the government's highest front and side impact crash rating — Five Stars*.



POWER LIFTGATE

Keep your mind open to new possibilities. Pacifica's power liftgate, standard on signature series and limited and available on Touring, opens and closes at the touch of a button found both on the key fob and the overhead console. To ensure safety, obstruction sensors automatically reverse direction if something impedes closing or opening.



AIR BAGS

With Pacifica, every passenger has additional protection in the event of a collision. Pacifica's passive safety features include

- * Advanced multistage driver and front-passenger air bags with occupant classification system*
- * Three-row supplemental side-curtain air bags* standard on Limited and Signature Series all-wheel drive (AWD) and available on Pacifica and Touring
- * Inflatable knee blocker* for the driver
- * Side-window laminated glass, available on Touring and Limited models, helps prevent shattering in the event of a collision, and reduces noise and UV rays

ALL-WHEEL DRIVE

You can't control the weather, but you can anticipate it. For ice, snow and slick roads, Pacifica's available all-wheel drive (AWD) system, provides better forward traction. The system transfers power from the front wheels to the rear wheels to help keep the car safely on the road. Meanwhile, Pacifica and Touring Front Wheel Drive (FWD) traction control for better command of the road when bad weather strikes.

* When equipped with supplemental side-curtain air bags
For more information, please visit www.chrysler.com/pacifica

* Certified to the Federal Regulation for automatic passenger occupant classification. Always use seat belts. Children 12 and under should always be in a back seat correctly using an infant or child restraint system, or the seat belt positioned correctly for the child's age and size. The OCS determines the conditions for activation or deactivation of the passenger-side front air bag based upon the weight of the occupant. It may not activate the air bag if the occupant has incorrect seating posture or is moving in the seat. You should observe the air bag lamp to determine if the OCS is deciding properly. Passengers should sit properly in the seat with the seat belt fastened at all times.



AVAILABLE EXTERIOR COLORS

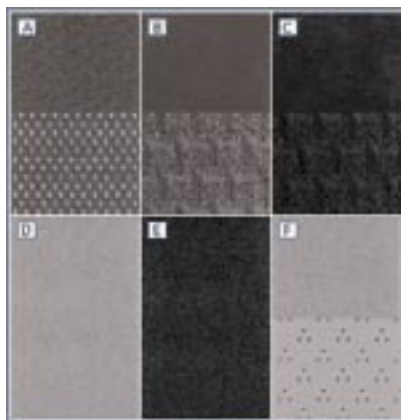


Not all models are available in all colors.



WHEEL OPTIONS

- 1. 17-inch wheel covers are standard on Pacifica FWD
- 2. 17-inch chrome-clad aluminum wheels are included with Signature Series and available on Touring
- 3. 17-inch aluminum wheels are standard on Pacifica AWD, Touring, and available on Pacifica FWD
- 4. 19-inch chrome-clad aluminum wheels are available on Touring models
- 5. 19-inch chrome-clad aluminum wheels are standard on Limited



AVAILABLE SEAT COLORS

- Light Taupe Camden/Avenue cloth standard on Pacifica FWD and AWD (A)
- 2. Light Taupe leather-trimmed seats available on Pacifica FWD and AWD (late availability)
- 3. Sydney/Saratoga cloth standard on Touring FWD in Light Taupe (B)
- 4. Sydney/Saratoga cloth standard on Touring FWD in Dark Slate Gray (C)
- 5. Light Taupe Royale II leather-trimmed seats available on Touring FWD and Touring AWD (D)
- 6. Unique, two-tone leather-trimmed seats included with Signature Series available in Light Taupe
- 7. Dark Slate Gray Royale II leather-trimmed seats available on Touring FWD and Touring AWD (E)
- 8. Light Taupe Tri-star Royale leather-trimmed seats with Preferred Suede accents standard on Limited (F)

For more information, please visit www.chrysler.com/pacifica



AVAILABLE EXTERIOR COLORS

Your Pacifica comes equipped with an AM/FM radio with CD player, seven Infinity® speakers, 200-watt amplifier, and steering wheel-mounted audio controls. If you choose the Limited or Signature Series, you'll get an AM/FM radio with cassette and six-disc in-dash CD/DVD player. Also available on Base and Touring models.

Or step up to the eight-speaker Infinity Intermezzo™ 5.1 digital surround-sound system with subwoofer, powered by a 385-watt digital amplifier. Available on Touring and Limited models.

A Rear Seat Video™ entertainment system, available on Touring and Limited, enables rear-seat passenger to enjoy CDs or DVDs through wireless headphones while front-seat occupants can listen to the radio or in-dash CD player. Auxiliary input jacks allow video cameras, games, and portable CD or mp3 audio players to be played through the system.

HANDS-FREE CELLULAR

Introducing UConnect™, Chrysler Group's hands-free, in-vehicle communication system available on Luxury FWD and Luxury AWD. Simply bring any Bluetooth™ compatible phone into the Pacifica interior and the UConnect™ system automatically lowers the volume on the audio system and broadcasts the incoming call. A microphone in the rearview mirror takes your voice commands — while you keep your hands on the wheel and your eyes on the road.



MEMORY SYSTEMS

Pacifica remembers your preferences when you step inside. Driver's seat, outside mirrors, adjustable pedals, and radio station presets can be set and stored for two drivers, standard on Luxury FWD and Luxury AWD. The standard remote keyless entry transmitter or memory seat buttons (shown at right) on the driver's door panel can be used to set and recall preferences. The system handles two drivers.



AUTOMATIC TEMP CONTROL

Luxury is having it all at the touch of a button. That's why Pacifica has a world-class heating and cooling system with dual-zone automatic temperature control (ATC) standard on Touring and Limited, and dual-zone manual temperature control standard on Pacifica. Controls are on the instrument panel with an additional fan switch in the rear. Other conveniences include standard heated exterior power mirrors with an available auto-dimming feature on the driver's side standard on Limited and Signature Series all-wheel drive (AWD), available on Touring (AWD).

ON-BOARD ELECTRONICS

The possibilities are endless. Pacifica features the finest technological innovations with optional industry-first in-cluster navigation map display. An electronic vehicle information center (EVIC) and an overhead console with the HomeLink® universal transceiver are standard on Touring, Signature Series, and Limited AWD.



AUTO-STICK

Pacifica follows no one. It is the only sports tourer with the standard AutoStick® transaxle system powering a 3.8-liter or a 3.5-liter V6 engine. AutoStick gives you the performance of a manual transmission and combines it with the carefree driving of an automatic transmission. And it allows you to stay ahead of the curve.

For more information, please visit www.chrysler.com/pacifica



PACIFICA SPECIFICATIONS

	Pacifica		Touring				Limited
	FWD	AWD	FWD	AWD	FWD	AWD	AWD
ENGINE/TRANSAXLE							
3.8L V6/4-speed automatic with AutoStick®	28H						
3.5L V6/4-speed automatic with AutoStick		26H	26S	26T	26S	26U	26X
MECHANICAL							
Alternator – 140-ampere	S						
– 160-ampere		S	S	S	S	S	S
Battery – 600-ampere, maintenance-free	S	S	S	S	S	S	S
Brakes – Four-wheel disc antilock	S	S	S	S	S	S	S
Engine Block Heater	O	O	O	O	O	O	O
Fuel Tank – 23-gallon with tethered cap	S	S	S	S	S	S	S
Suspension – Independent, performance tuned; front, MacPherson; rear, five-link, load-leveling	S	S	S	S	S	S	S
Traction Control – Low-speed			O	O			
EXTERIOR FEATURES							
Antenna – Integrated into right rear quarter glass	S	S	S	S	S	S	S
Cladding – Lower bodyside, accent color	S	S	S	S	S	S	
Fog Lamps – Front				S		S	S
Glass – Sunscreen/privacy (rear and sides) and solar control (front row and windshield)	S	S	S	S	S	S	S
Headlamps – Halogen, dual reflector with off-time delay	S	S	S	S	S	S	S
– Automatic						S	S
– High Intensity Discharge (HID)				O		O	O
Liftgate – Power, includes overhead console, integrated key button controls and Obstacle Detection System ¹⁰			O	S	O	S	S
Mirrors – Dual folding, power, heated side	S	S	S	S	S	S	S
– Driver-side exterior with electrochromic dimming						S	S
Moonroof – Power with sunshade and one-touch open			O	O	O	O	S
Roof Rack Side Rails – Integrated	S	S	S	S	S	S	S
Spare Tire – Compact (T155/90D18 on 18"x4" steel wheel)	S	S	S	S	S	S	S
– Full-size (not available with 19" wheel)			O	O	O	O	
Tires – P235/65R17 BSW All Season	S	S	S	S	S	S	
– P235/55HR19 BSW All Season				O		O	S
Wheels – 17" wheel cover	S						
– 17" aluminum		S	S	S	S	S	
– 17" aluminum, chrome-clad			O	O	O	O	
– 19" aluminum, chrome-clad (not available with full-size spare tire)				O		O	S
Windows – Power front and rear with one-touch down	S	S	S	S	S	S	S
Windshield Wipers – Speed-sensitive; front – variable intermittent; rear – intermittent	S	S	S	S	S	S	S

For more information, please visit www.chrysler.com/pacifica



PACIFICA SPECIFICATIONS

	Pacifica		Touring				Limited
	FWD	AWD	FWD	AWD	AWD	AWD	AWD
INTERIOR FEATURES							
Air Conditioning – Dual Zone Manual Temperature Control	S	S					
– Dual Zone Automatic Temperature Control with infrared sensor and outside temperature display			S	S	S	S	S
Air Filter – Particulate air filter	S	S	S	S	S	S	S
Assist Handle – Front passenger only	S	S	S	S	S	S	S
Cargo Tie Down Loops – Rear	S	S	S	S	S	S	S
Clock – Analog			S	S	S	S	S
Consoles – Mini overhead	S	S					
– Overhead: Includes map lamps, sunglasses holder, sunroof and power liftgate controls (if equipped) and HomeLink® Universal Transceiver			S	S	S	S	S
– First-row floor: Storage compartment, front cup holders, cell phone holder, power outlet, rear HVAC vents	S	S					
– First- and second-row floor: Storage compartment, front/rear cup holders, cell phone holder, power outlet, rear air flow control and vents			S	S	S	S	S
Defroster – Electric rear window	S	S	S	S	S	S	S
Deluxe Sound Insulation – Hood and rear floor silencers	S	S	S	S	S	S	S
Electronic Vehicle Information Control (EVIC) – Display located in instrument cluster			S	S	S	S	S
Floor Covering – 10-ounce floor and cargo area	S	S	S	S	S	S	S
Floor Mats – Luxury, first- and second-row	S	S	S	S	S	S	S
Grocery Bag Hooks – Front seatbacks	S	S	S	S	S	S	S
HomeLink Universal Transceiver			S	S	S	S	S
Lamps – Rear reading lamps, four			S	S	S	S	S
Lighting – Fade-to-off courtesy lamps include: Illuminated entry liftgate flood lamp, and two front map lights	S	S	S	S	S	S	S
Map Pockets – Front and rear doors	S	S	S	S	S	S	S
Memory System – Controls driver's seat, exterior mirror and adjustable pedal (if equipped) positions, and radio presets for two drivers						S	S
Mirrors – Rearview, day/night	S	S	S	S	S		
– Rearview mirror with automatic dimming						S	S
– Dual covered vanity mirrors	S	S					
– Dual interior illuminated vanity mirrors			S	S	S	S	S
Navigation System with GPS – Integrated in-cluster map display				O		O	O
Power Accessory Delay	S	S	S	S	S	S	S
Power Door Locks	S	S	S	S	S	S	S
Power Outlets – Four (two front, one second-row, one cargo area)	S	S	S	S	S	S	S
Remote Audio Controls – Located on back of steering wheel	S	S	S	S	S	S	S

For more information, please visit www.chrysler.com/pacifica



PACIFICA SPECIFICATIONS

	Pacifica		Touring		Limited		
	FWD	AWD	FWD	AWD	AWD	AWD	
INTERIOR FEATURES (CONTINUED)							
Shift Knob – Leather-wrapped	S	S	S	S	S	S	
– Leather-wrapped with genuine wood accents							S
Speed Control – steering wheel-mounted controls	S	S	S	S	S	S	S
Steering – Power rack-and-pinion	S	S	S	S	S	S	S
Steering Column – Tilt	S	S	S	S	S	S	S
Steering Wheel – Leather-wrapped	S	S	S	S	S	S	
– Leather-wrapped with genuine wood accents							S
Storage – Carpeted, covered bin under rear cargo floor			S	S	S	S	S
Tachometer			S	S	S	S	S
Trip Computer – Display located in instrument cluster			S	S	S	S	S
SEATING AND TRIM							
Cloth Interior – Camden/Avenue cloth	S	S					
– Sydney/Saratoga cloth			S				
Leather-Trimmed Interior – Front and second-row seats				S	S	S	
– Front and second-row seats, luxury leather and Preferred Suede®							S
Seating – First-row: low-back buckets with inboard armrests	S	S	S	S	S	S	S
– 5-passenger (includes 65/35 intermediate bench)	S	S					
– 6-passenger (includes fold-flat second-row buckets, 50/50 third-row)			S	S	S	S	S
Seats – Four-way power front-passenger	S	S	S	S	S	S	S
– 8-way power driver's	S	S					
– 10-way power driver's with *easy exit* capabilities			S	S	S	S	S
ENTERTAINMENT SYSTEMS							
CD/DVD Changer – In-dash 6-disc, includes RCA-type input jacks for video devices, game consoles and MP3 player	O	O	O	S	O	S	S
DVD Rear Seat Video™ System – Rear headliner-mounted, 7-inch diagonal screen with remote control and two wireless headsets. Connects to optional in-dash 6-disc CD/DVD changer (requires power liftgate and CD/DVD changer)			O	O	O	O	O
Radio – AM/FM CD player with changer controls	S	S	S		S		
– AM/FM cassette/CD players with equalizer and changer controls	O	O	O	S	O	S	S
Satellite Radio – Factory-installed SIRIUS Satellite Radio SM			O	O	O	O	O
Sound System – Seven ∞Infinity™ speakers, 200-watt amplifier	S	S	S	S	S	S	S
– 385-watt ∞Infinity Intermezzo™ Digital 5.1 Surround Sound system includes AM/FM cassette/CD/equalizer/changer controls and 8 speakers including an 8-inch subwoofer				O		O	O

For more information, please visit www.chrysler.com/pacifica



PACIFICA SPECIFICATIONS

	Pacifica		Touring				Limited
	FWD	AWD	FWD	AWD	AWD	AWD	AWD
SAFETY AND SECURITY							
Adjustable Pedals – Power with memory (included in Comfort Convenience Group)			O	P	O/P	S	S
Air Bags¹² – Next Generation, multistage driver and front passenger with Occupant Classification System ¹³ and driver-side inflatable knee blocker	S	S	S	S	S	S	S
– Supplemental side-curtain for passengers in all rows	O	O	O	O	O	S	S
Child-Protection Rear Door Locks	S	S	S	S	S	S	S
Child Seat Anchor System (LATCH) – Lower anchors and upper tether anchors for compatible aftermarket child seats	S	S	S	S	S	S	S
Remote Keyless/Illuminated Entry	S	S	S	S	S	S	S
ParkSense™ Rear Back-up System¹⁴ – Includes accent-color rear fascia scuff pad ¹⁵			O	O	O	O	S
Seat Belts – Lap/shoulder at all seating positions; pretensioners and height-adjustable upper anchors at front positions	S	S	S	S	S	S	S
SecureShield Laminated Side-Window Glass – Requires side-curtain air bags				O		O	O
Security Alarm	S	S	S	S	S	S	S
Sentry Key® Theft Deterrent (Engine Immobilizer) – Integrated key/fob	S	S	S	S	S	S	S
Tire Pressure Monitoring System – Low-pressure display in EVIC (packaged with 19" chrome-clad wheels)			O	O/P	O	O/P	S
UConnect™ Hands-Free Communication System				O		O	O
PACKAGES							
Cargo Convenience Group – Rear cargo net, tonneau cover, roof rack crossbars and rear fascia scuff pad ¹⁶	O	O	O	O	O	O	S
Comfort Convenience Group – Heated front- and second-row seats and power adjustable pedals (requires Leather-Trimmed Interior)				O	O	S	S
Heated Seat Group – Heated front- and second-row seats (Requires Leather-Trimmed Interior)				O	O	S	S
Smoker's Group – Ashtray and cigar lighter	O	O	O	O	O	O	O

S = Standard. P = Included in package noted in parentheses. O = Optional.

¹² Detects most objects. As with all electronically controlled devices, care is advised.

¹³ First-year subscription included. Available only within continental United States.

¹⁴ Certified to the Federal Regulations for automatic passenger occupant classification. Always use seat belts. Children 12 and under should always be in a backseat correctly using an infant or child restraint system, or the seat belt positioned correctly for the child's age and weight. The OCS determines the conditions for activation or deactivation of the passenger-side front air bag based upon the weight of the occupant. It may not activate the air bag if the occupant has incurred seating posture or is moving in the seat. You should observe the air bag light to determine if the OCS is deciding properly. Passenger should sit properly in the seat with the seat belt fastened at all times.

¹⁵ Rear fascia scuff pad not included on limited models.

Infinity and Intermzzo are registered trademarks of Harman International Industries, Inc. Homelink is a registered trademark owned by Johnson Controls, Inc. Preferred Swade is a registered trademark of Milliken & Co. SIRIUS, the dog logo, and SIRIUS stream names are logos and trademarks of SIRIUS Satellite Radio Inc. Mapac, Pacifica, ParkSense, Rear Seat Video, SecureShield, Sentry Key and UConnect are trademarks of DaimlerChrysler Corporation.

For more information, please visit www.chrysler.com/pacifica