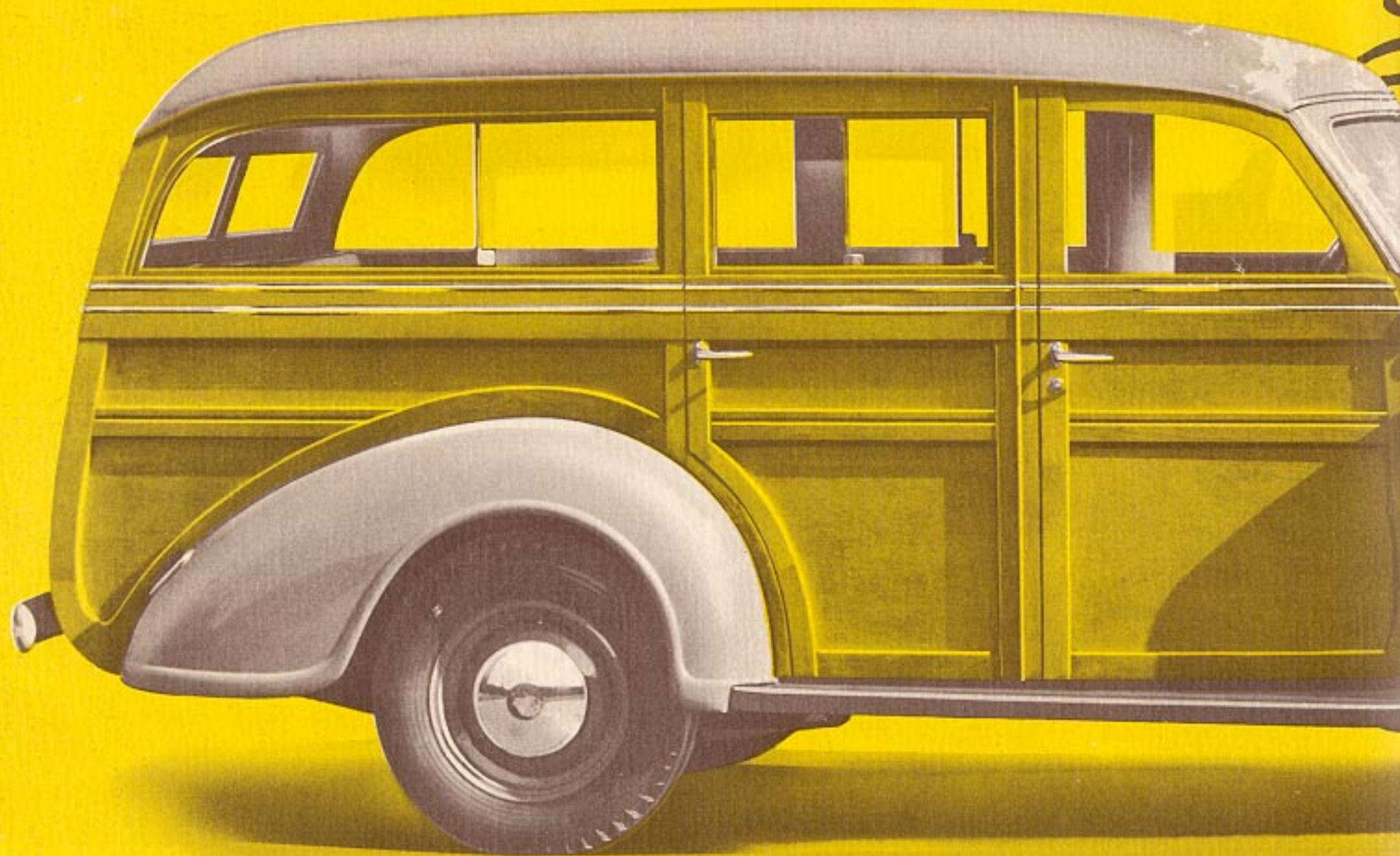




America's Smartest Station Wagon

1939 DE LUXE ... on the PLYMOUTH CHASSIS

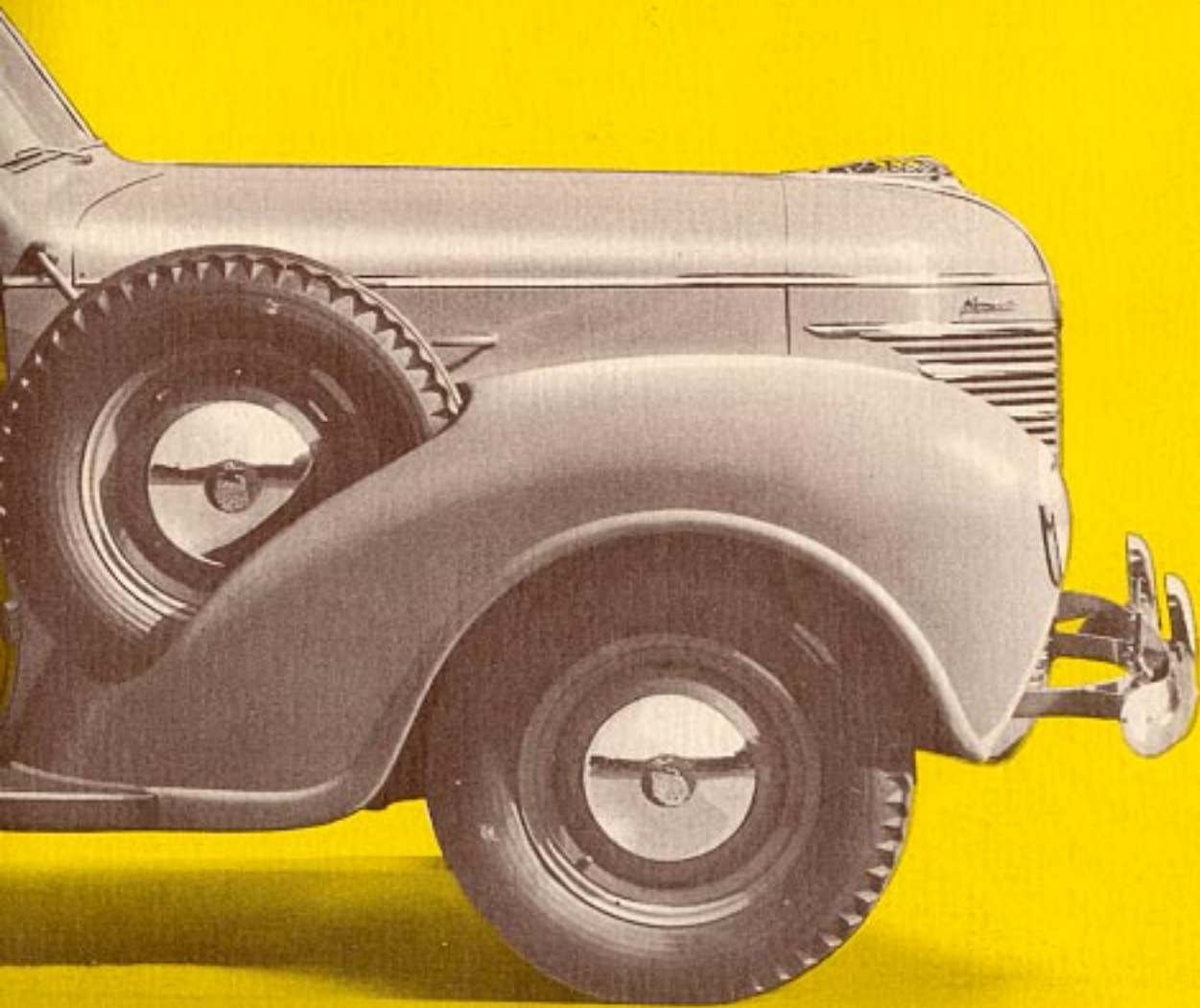
PLYMOUTH & NEW YORK INC.
CHRYSLER - PLYMOUTH
KESWICK ROAD & 33RD STREET
UNIVERSITY 4664



Superb PASSENGER CAR *Performance*

WITH
NEW COSMOPOLITAN

Smartness



Never before has there been a station wagon to equal this new Plymouth Suburban!

No longer need you sacrifice smartness for room—this big car is the last word in graceful beauty, from its ultra-modern grille to the sweeping curves of its smart rear-end design.

Gone is the necessity of giving up comfort for the sake of utility—for the big Plymouth Suburban body is carried on the Plymouth De Luxe passenger car chassis, famous for its exceptional riding qualities.

New smartness and freshness of appearance, both outside and inside . . . new riding ease . . . new, sparkling performance . . . new larger carrying space . . . new utility and convenience . . . all combine with Plymouth's better engineering for long life and economical operation. The result—the one car that completely answers every requirement of those to whom a station wagon is a necessity of smart living.

1939

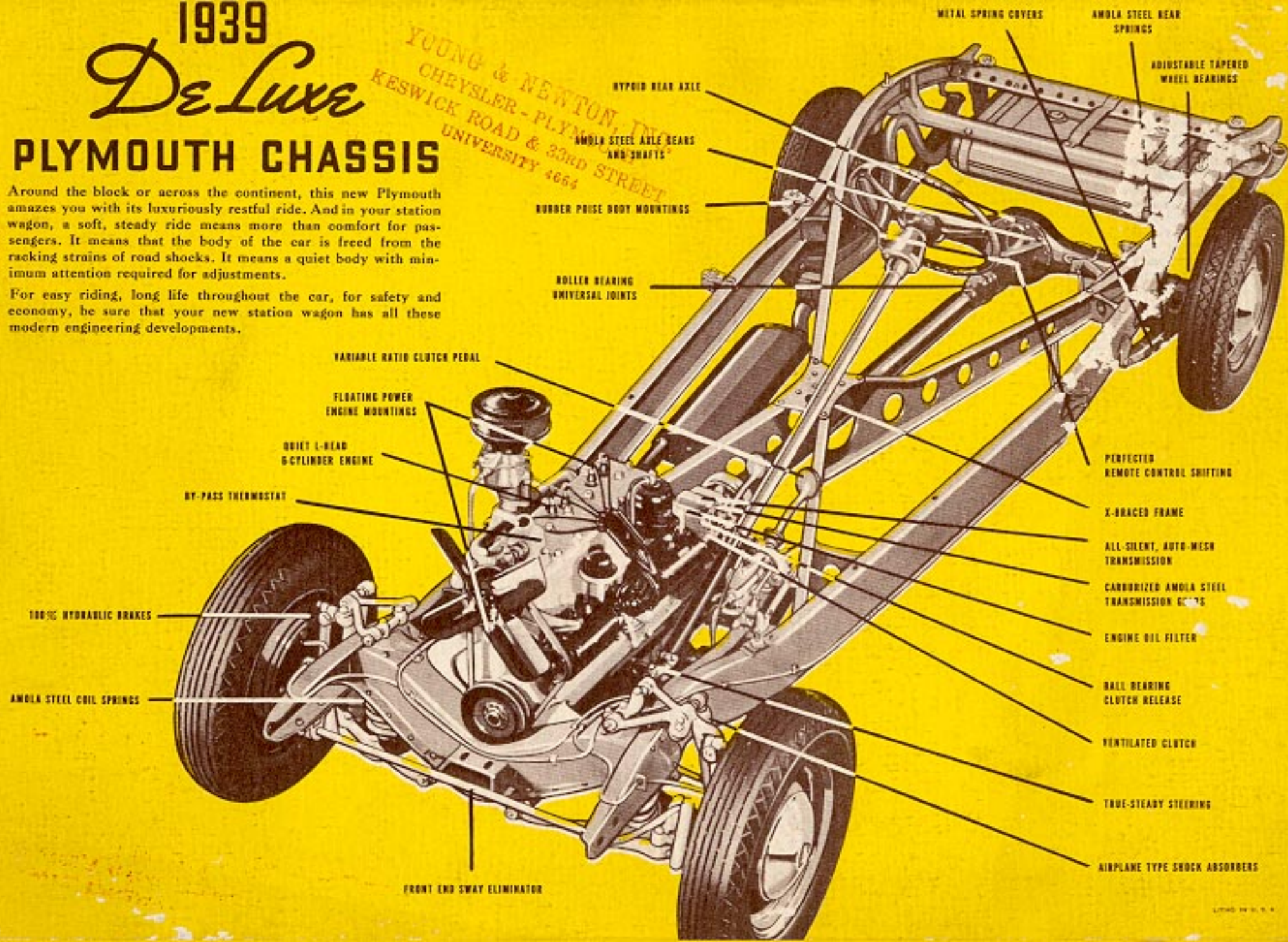
De Luxe

PLYMOUTH CHASSIS

Around the block or across the continent, this new Plymouth amazes you with its luxuriously restful ride. And in your station wagon, a soft, steady ride means more than comfort for passengers. It means that the body of the car is freed from the racking strains of road shocks. It means a quiet body with minimum attention required for adjustments.

For easy riding, long life throughout the car, for safety and economy, be sure that your new station wagon has all these modern engineering developments.

YOUNG & NEWTON, INC.
CHRYSLER - PLYMOUTH
KESWICK ROAD & 33RD STREET
UNIVERSITY 4664



HYPOID REAR AXLE

AMOLA STEEL AXLE BEARS AND SHAFTS

RUBBER PRIZE BODY MOUNTINGS

ROLLER BEARING UNIVERSAL JOINTS

VARIABLE RATIO CLUTCH PEDAL

FLOATING POWER ENGINE MOUNTINGS

QUIET L-HEAD 6 CYLINDER ENGINE

BY-PASS THERMOSTAT

100% HYDRAULIC BRAKES

AMOLA STEEL COIL SPRINGS

FRONT END SWAY ELIMINATOR

METAL SPRING COVERS

AMOLA STEEL REAR SPRINGS

ADJUSTABLE TAPERED WHEEL BEARINGS

PERFECTED REMOTE CONTROL SHIFTING

X-BRACED FRAME

ALL-SILENT, AUTO-MESH TRANSMISSION

CARBURIZED AMOLA STEEL TRANSMISSION GEAR'S

ENGINE OIL FILTER

BALL BEARING CLUTCH RELEASE

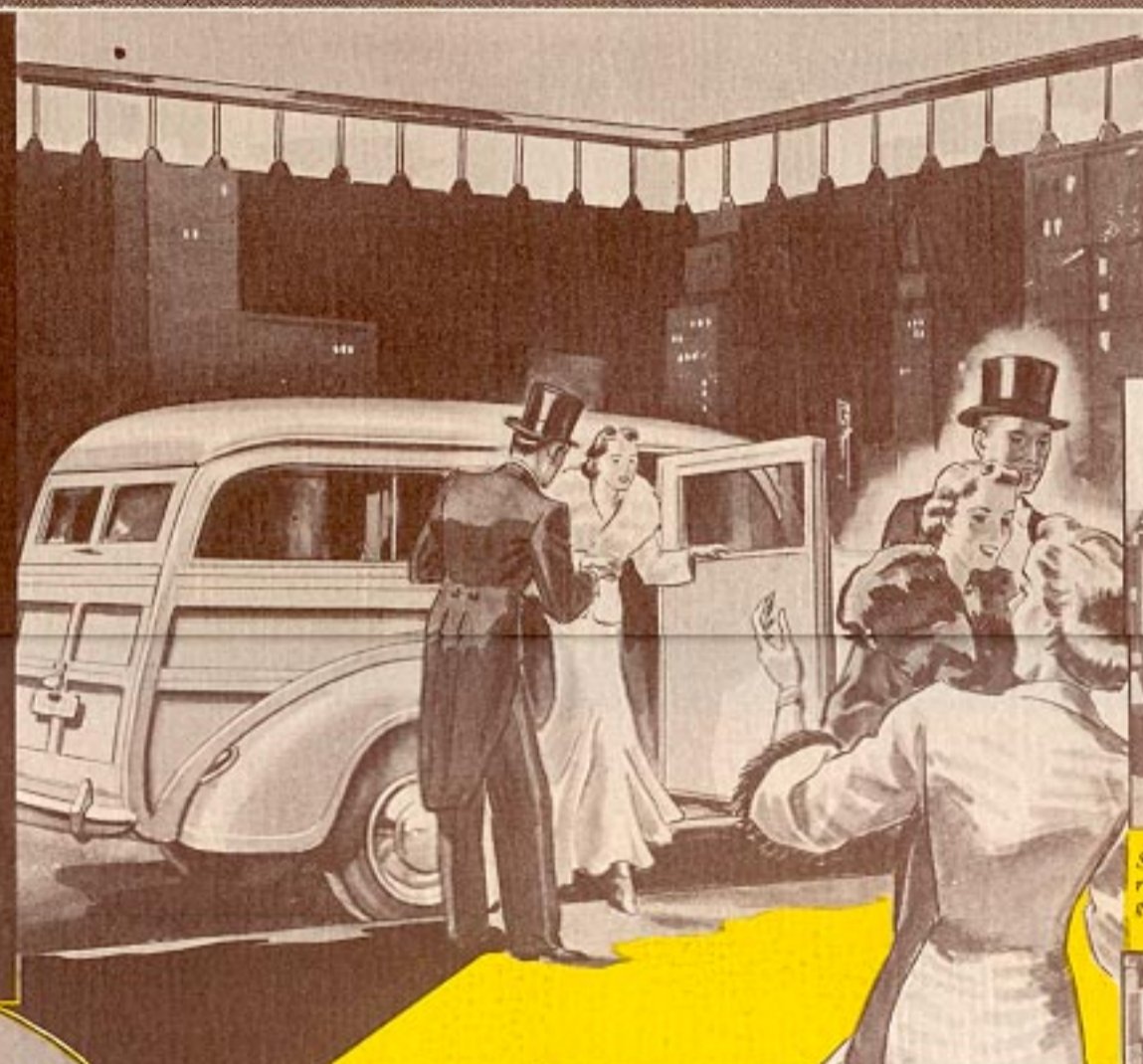
VENTILATED CLUTCH

TRUE-STEADY STEERING

AIRPLANE TYPE SHOCK ABSORBERS

Advanced Construction

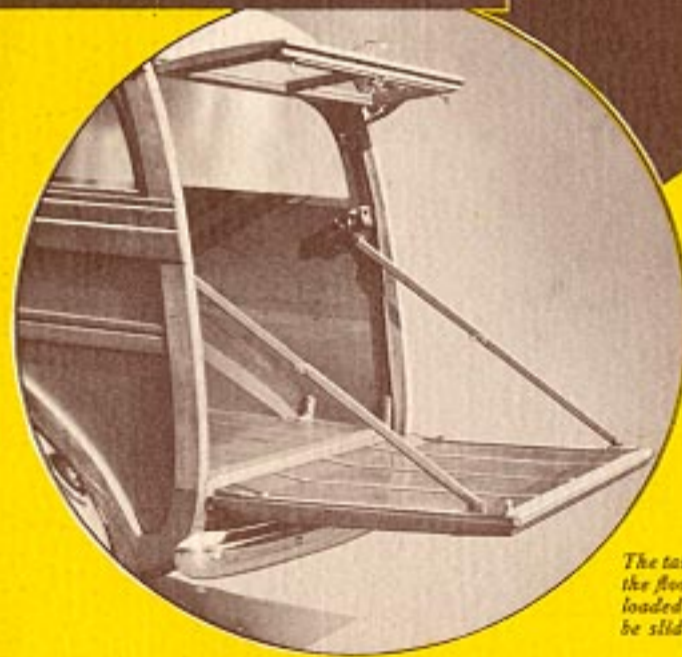
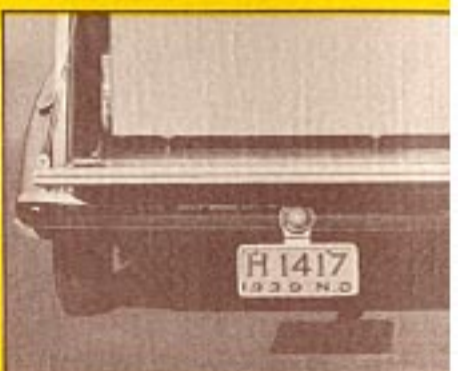
COMBINED WITH MANY DELIGHTS



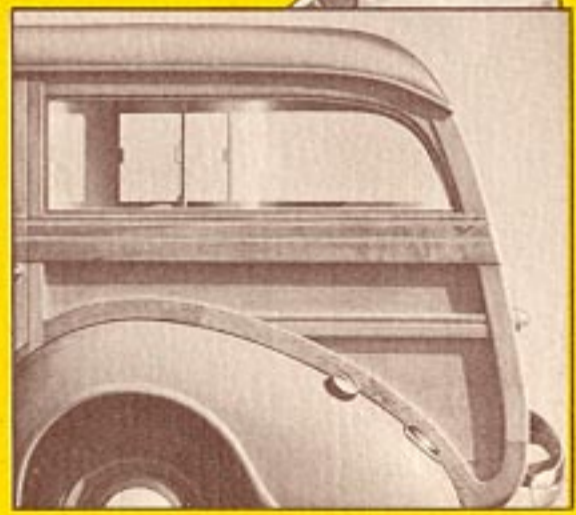
Noteworthy in this new body are the unusual sturdy lines and the exceptional quality of maple from which it is built. It presses in every detail the advanced and precision workmanship of Plymouth its universal reputation stands up best." Note, too, the advanced construction has been made for comfort,



Safety glass in windshield and front doors and rear doors and tail-gate, there is an option of optional glass as shown here and which is priced slightly higher.



The tail-gate opens flush with the floor so that articles to be loaded or unloaded can easily be slid in or out.



Smartly graceful are the curves of this rear end design—decided relief from the box-like appearance formerly associated with the station wagon design. A tail lamp in each rear fender is standard equipment.

This ingenious fastening assures a securely locked tail-gate and eliminates rattles at that point. The tail-gate can be fastened either from inside or from outside the car. Window above tail-gate is easily opened.

When all seats are in place, the Plymouth Suburban provides generous accommodation for eight passengers, with carrying space behind the rear seat and on the lowered tail-gate for luggage and other articles it is desired to transport.

With both the rear seat and the center seat folded down, the front seat is made available as carrying space for luggage and other articles it is desired to transport. Beautifully finished oak floor!

