

1986

CHRYSLER

FIFTH AVENUE



1986 Chrysler Fifth Avenue

THE prestigious 1986 Chrysler Fifth Avenue is perhaps the most elegantly conceived luxury sedan in the world. □ The beauty of its design begins with its distinctive classic lines. The styling is timeless. A strong statement of formality and continuity. □ Fifth Avenue's long wheelbase and proven suspension offer superior ride quality and driving comfort. A powerful 5.2-liter V-8 delivers dependable, responsive performance through a smooth TorqueFlite transmission. And more than fifty standard features reflect Fifth Avenue's design intention for personal luxury and elegant taste.



About this catalog. We have tried to make this catalog as complete as possible. And we hope you will find it useful. However, since the time of printing, some of the information you'll find here may have been updated. Your dealer has details, and you should ask him for current information before ordering.

Some of the equipment shown or described throughout this catalog is available at extra cost.

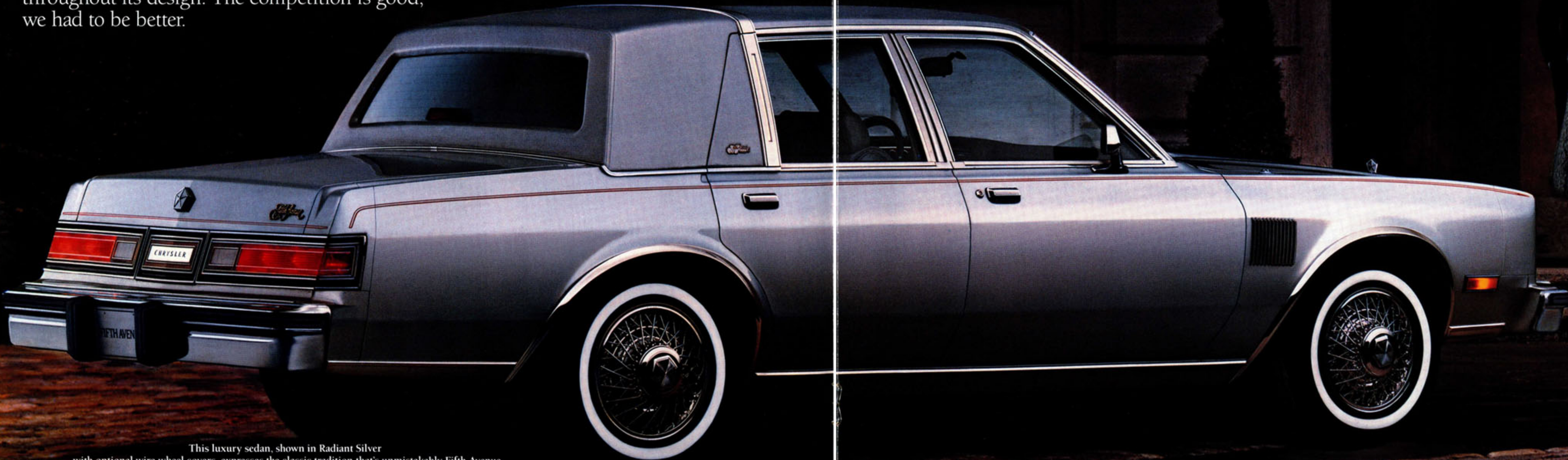


The traditional style of this Chrysler Fifth Avenue, shown in Black /Radiant Silver , is crowned with a distinctive padded vinyl landau roof.



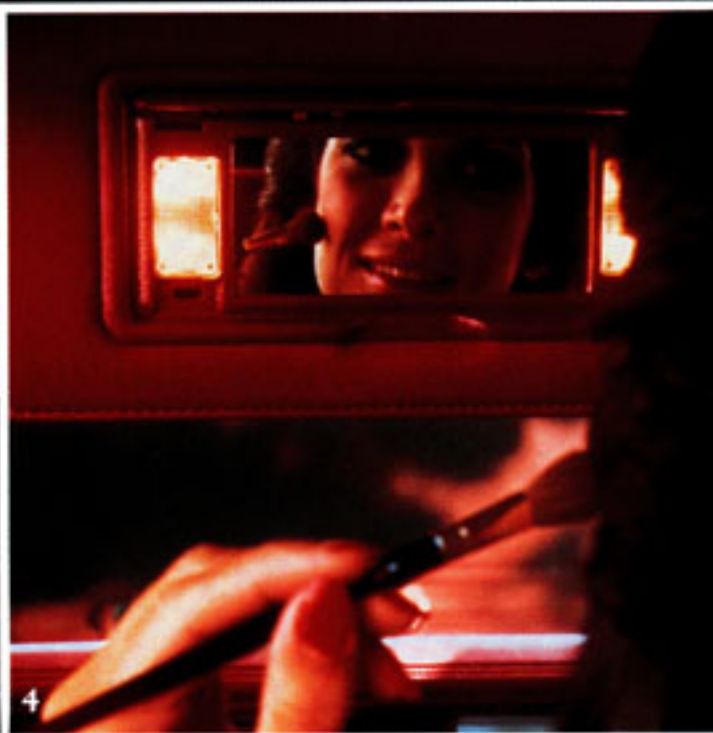
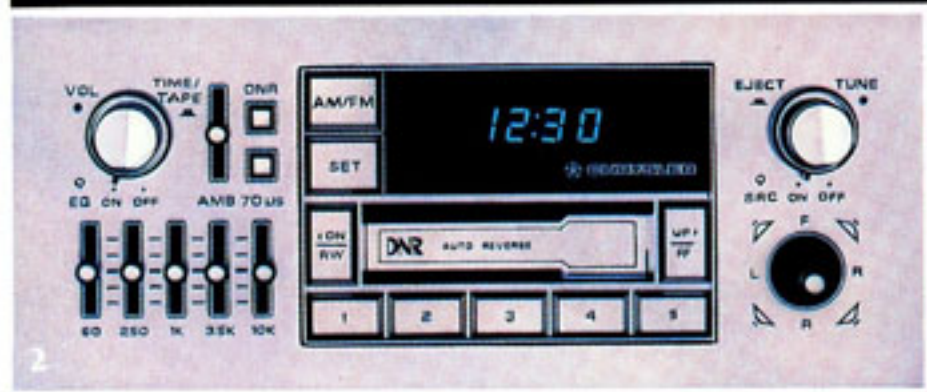
Fifth Avenue surrounds you in luxury
with its optional soft Corinthian leather with vinyl trim 60/40 front seat. Shown in Silver.

A CLASSIC IMAGE. If Fifth Avenue impresses you as being a cut above and a true value for the money, it's because of Chrysler's strong commitment to outstanding quality. Sophisticated engineering standards and practices are evident throughout its design. The competition is good, we had to be better.



This luxury sedan, shown in Radiant Silver with optional wire wheel covers, expresses the classic tradition that's unmistakably Fifth Avenue.

Standard and Optional Equipment



OPTIONAL EQUIPMENT

1. Luxury Leather-Wrapped Steering Wheel provides a comfortable, sure-grip surface. And it's color-keyed to compliment your interior selection. On the instrument panel, dark featherwood woodtone applique and bright accents surround gauges, warning lights, speedometer/odometer and switches.

2. Ultimate Sound System Stereo is the optimum Chrysler sound system. It includes 36-watt AM stereo*/FM stereo radio; electronic tuning; memory scan; up-and-down scan; Dynamic Noise Reduction (DNR)†; cassette player with automatic reverse and metal tape capability; five-band graphic equalizer; joystick balance/fader control; ambience sound control; integral digital clock.

3. Automatic Speed Control reduces fatigue on long drives and helps to conserve fuel.

4. Illuminated Visor Vanity Mirror provides your traveling companion with a lighted mirror that is hidden away when not in use.

INTERIOR TRIM



Standard Chrysler Fifth Avenue.

Velvet all-cloth 60/40 individually adjustable front seats with adjustable head restraints, folding center armrest, and passenger side seatback recliner. Available in Dark Blue, Red, Silver, Almond.



Optional Chrysler Fifth Avenue.

Corinthian leather with vinyl trim 60/40 individually adjustable front seats with adjustable head restraints, folding center armrest, and passenger side seatback recliner. Available in Dark Blue, Red, Silver, Almond.

*Limited AM stereo reception may be experienced in some areas because some AM stereo broadcasting is not compatible with this radio's reception capabilities.

†DNR (Dynamic Noise Reduction) is a trademark of National Semiconductor Corporation.

DIMENSIONS, WEIGHT AND CAPACITY

Length (in.)	206.7
Width (in.)	72.4
Height (in.)	55.1
Wheelbase (in.)	112.6
Turning Diameter (ft.)	40.7
Curb Weight (lbs; estimated)	3,744
Cargo Capacity (cu ft)	15.6
Passenger Capacity	6
Fuel Capacity (gal)	18.0

OPTIONAL PACKAGES

LUXURY EQUIPMENT

DISCOUNT PACKAGE

- AM stereo*/FM stereo electronically tuned radio; integral digital clock†
- Automatic speed control
- Corinthian leather with vinyl trim 60/40 front seats, with folding center armrest and passenger side recliner (60/40 velvet all-cloth seats may be substituted at no extra charge)
- Deluxe intermittent windshield washers/wipers
- Electroluminescent opera lights‡
- Heavy-duty 500-ampere maintenance-free battery
- Hood stripes
- Illuminated entry system
- Illuminated passenger visor vanity mirror
- Luxury leather-wrapped two-spoke steering wheel
- Power deck lid release
- Power door locks
- Power driver's seat (may be upgraded to dual power seats)
- Power radio antenna
- Premium speaker system (includes power amplifier and coaxial rear speakers; deleted with optional Ultimate Sound System radio)‡
- Protection Package
- Tilt steering column
- Wire wheel covers (set of four)

*Limited AM stereo reception may be experienced in some areas because some AM stereo broadcasting is not compatible with this radio's reception capabilities.

†May be upgraded.

‡Available in package only.

TWO-TONE PAINT PACKAGE

- Cast aluminum 15-inch wheels (set of four)*
- Electroluminescent opera lights†
- Landau roof transverse termination moldings
- Special bodyside and deck stripes†
- Special padded vinyl landau roof†
- Two-tone paint†

*Wire wheel covers may be substituted at no extra charge.

†Available in package only.

PROTECTION GROUP

- Color-keyed long pile plush carpeted floor mats, front and rear*
- Color-keyed vinyl bodyside moldings*

*Available in package only.

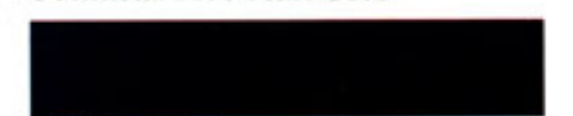
1986 EXTERIOR COLORS



Black



Gunmetal Blue Pearl Coat*



Nightwatch Blue



Mink Brown Pearl Coat



Gold Dust



Crimson Red



Radiant Silver



White

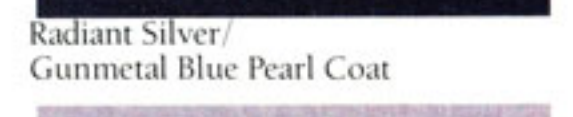
TWO-TONE PAINT*



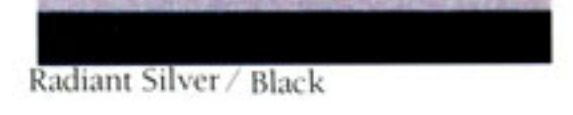
Radiant Silver/Crimson Red



Radiant Silver/Gunmetal Blue Pearl Coat



Radiant Silver/Black



*Extra cost.

Note: Due to occasional printing irregularities, the colors shown may vary slightly from actual hues. See your Chrysler dealer for accurate color chips.

Clear Coat finish is standard on every 1986 passenger car built by Chrysler Corporation.

STANDARD AND OPTIONAL FEATURES

Air Conditioning ¹ /Heater—Automatic temperature control: bi-level ventilation . . .	S
Alternator—78-ampere	S
Antenna—Power (stereo radio required)	E
Ash Receivers—Front: instrument panel; rear: dual	S
Assist Handles—Front: passenger side; rear: dual	S
Battery—400-ampere, maintenance free: low-profile, with integral battery test indicator	S
Battery—500-ampere, maintenance free, heavy-duty: low-profile, with integral battery test indicator	E
Bezel—Deck, lower center: black and brushed finish with bright "Chrysler" block letters	S
Brakes—Vented front disc, rear drum: power-assisted	S
Bumper Fillers—Front: end sections; rear: center and end sections	S
Bumper Guards—Front and rear: black	S
Bumper Protective Rub Strips—Front and rear: black	S
Carpeting—Passenger compartment: premium color-keyed long pile plush	S
Chimes—Reminder: headlights on, key in ignition, seat belt	S
Cigar Lighter	S
Coat Hooks—Rear	S
Coolant Overflow Reservoir	S
Corrosion Protection—Extensive use of galvanized steel; lower body urethane protective coating	S
Deck Lid Release—Power	E
Defroster—Rear window: electric	S
Door Handle Tape Inserts—Exterior: color-keyed	S
Door Locks—Power	E
Electronic Ignition and Voltage Regulator	S
Emissions Control System and Testing—Required on all vehicles registered in California; not available otherwise	E
Engines—See Power Train Chart	
Fuel Filler Cap Tether	S
Fuel Tank—18-gallon	S
Glass—Tinted: all windows	S
Glove Box Lock	S
Head Restraints—Front: right and left	S
Headlights—Halogen: quad rectangular	S
Headliner—Molded, cloth-covered: color-keyed	S
Hood Ornament—Pentastar: crystalline plastic	S
Hood Release—Inside	S
Horns—Dual note	S
Instrument Cluster—Includes gauges for: alternator, engine coolant temperature and fuel level; low oil pressure warning light	S

POWER TRAIN CHART¹

Engine	Displacement	Bore & Stroke	Compression Ratio	Horsepower	Torque	Transmission Availability
				SAE Net @ RPM		
8-cylinder V-8 ² : standard	5.2-liter (318 CID)	3.91" x 3.31"	9.0:1	140 hp @ 3,600 rpm	265 lb-ft @ 1,600 rpm	Standard: 3-speed automatic (2.26 OTGR)

OTGR—Overall top gear ratio. ¹Emissions controls required at extra cost on all vehicles registered in California; not available otherwise. ²Includes electronic ignition and voltage regulator.

Instrument Panel Top—Padded: color-keyed	S	cassette player with automatic reverse; four-speaker sound; integral digital clock	E
Instrument Panel Trim—Wood-tone applique: dark feather-wood with bright accents	S	Radio—AM stereo ² /FM stereo, 36-watt Ultimate Sound System: electronic tuning; memory scan; up-and-down scan; Dynamic Noise Reduction (DNR) ³ ; cassette player with automatic reverse and metal tape capability; five-band graphic equalizer; joystick balance/fader control; four-speaker sound; ambience sound control; integral digital clock	E
Insulation—Hood pad and special body sound	S	Roof—Landau: color-keyed padded vinyl	S
License Plate Bracket—Front: standard where required	NC	Seat—Power: left, or left and right	E
Lights—Ash receiver; courtesy (door and under instrument panel); dome/map reading; door ajar; glove box; headlight switch symbol with time delay; ignition switch light with time delay; low fuel, engine temperature and alternator warning; low windshield washer fluid warning	S	Seat Belts—Deluxe: color-keyed	S
Lights—Illuminated entry system	E	Seats—See Interior Trim	
Lock Cover—Deck-lid Pentastar: body color and bright	S	Speed Control—Automatic (deluxe intermittent wipers required)	E
Louvers—Fender, decorative: body color with bright accents	S	Steering—Power-assisted	S
Mirror—Interior passenger visor vanity; illuminated	E	Steering Column—Tilt (deluxe intermittent wipers required)	E
Mirror—Interior rearview: day/night	S	Steering Wheel—Luxury two-spoke	S
Mirrors—Exterior remote controlled left and convex right: chrome, with body color tape stripe	S	Steering Wheel—Luxury two-spoke: leather-wrapped	E
Moldings—Belt (with brushed aluminum saddle applique); drip rail; sill (with front and rear extensions); termination (bright padded vinyl landau roof); upper door frame; wheel opening; windshield	S	Stripes—Bodyside and deck lid: tape	S
Multifunction Steering Column Lever—Controls for directional signals and lane-change feature, headlight dimmer, windshield wiper/washer (intermittent wipe features and speed control when these options are ordered or included)	S	Stripes—Hood	E
Radio—AM: electronic tuning; digital readout; integral digital clock	S	Suspension—Front: transverse torsion bar with antisway bar; rear: leaf spring	S
Radio—AM stereo ² /FM stereo: electronic tuning; four-speaker sound; integral digital clock	E	Suspension—Heavy-duty: front and rear heavy-duty shock absorbers; heavy-duty front sway bar; heavy-duty rear leaf springs	E
Radio—AM stereo ² /FM stereo, premium: electronic tuning; seek-and-scan; Dynamic Noise Reduction (DNR) ³ ;		Tire—Spare: conventional	E
		Tire—Spare: T125/70D15 compact high-pressure, limited service	S
		Tires—P205/75R15 steel-belted radial all-season white sidewall (set of four)	S
		Transmission—Automatic: three-speed TorqueFlite	S
		Trip Odometer	S
		Trunk Dress-Up—Gray	S
		Undercoating	E
		Wheel Covers—Premium: 15-inch (set of four)	S
		Wheel Covers—Wire, with locks: 15-inch (set of four)	E
		Wheels—Road: 15-inch cast aluminum (set of four)	E

Windows—Power	S
Windshield Wipers/Washers—Deluxe: with intermittent wipe feature	E
Windshield Wipers/Washers—Electric: two-speed	S

S—Standard. E—Extra cost. NC—No-charge option.

¹These are special engine cooling requirements for field-installed air conditioning. Failure to follow these requirements may invalidate warranty. See your dealer for details.

²Limited AM stereo reception may be experienced in some areas because some AM stereo broadcasting is not compatible with this radio's reception capabilities.

³DNR (Dynamic Noise Reduction) is a trademark of National Semiconductor Corporation.

Certain models, packages and options are subject to specific restrictions, requirements, or late availability. See your dealer for the latest ordering information.

STANDARD SAFETY FEATURES

- Anti-theft ignition and steering column lock
- Backup lights
- Brake fluid pressure loss warning light (also serves as indicator when parking brake is applied)
- Combination lap-shoulder belts for the driver and right front passenger; lap belts for all other passengers
- Double ball-joint rearview mirror mount
- Dual braking system with separate brake fluid reservoirs in the master cylinder
- Dual throttle return springs
- Electric windshield washers and wipers
- Electronic ignition
- Energy-absorbing front seatbacks
- Energy-absorbing instrument panel and sun visors
- Energy-absorbing steering wheel
- Fade-resistant front disc brakes
- Front seat head restraints
- Glare reduction measures for windshield wipers, instrument panel, and steering wheel
- Hazard warning flasher system
- Headlight and wiper circuit breakers with automatic reset
- High-mounted center supplemental stoplight
- Inside and outside rearview mirrors
- Interlocking door latches
- Key left in ignition warning
- Nonoverride door locks (except driver's door)
- Recessed inside door release handles
- Reinforced windshield header and roof
- Resilient window crank knobs
- Rotary glove box latch
- Safety-Rim wheels
- Seat belt reminder system
- Seatback latches on folding seats
- Side door beams
- Side marker lights and reflectors
- Turn signals with lane-change feature



5/50 PROTECTION PLAN

Warranty protection is a matter of confidence. And Chrysler Corporation is so sure of the care and precision that go into each Fifth Avenue that they offer the Five-Year/50,000-Mile Protection Plan. It speaks for itself.

Upon expiration of the normal 12-month/12,000-mile new vehicle limited warranty, limited warranty coverage is extended on power train components, including engine, transmission and axle—plus outer panel rust-through protection—to five years/50,000 miles, whichever comes first. A deductible may be required. Fleet, lease and export vehicles excluded. See your dealer for details.

OPTIONAL 5/50 SERVICE CONTRACT COVERAGE

Chrysler Service Contracts provide you with additional peace of mind protection for your new vehicle. Coverage starts on the specified components after your vehicle's basic warranty expires and continues for five years or 50,000 miles (whichever occurs first) from the original warranty start date. A deductible applies. Allowances for car rental and towing are also included. Ask your dealer for details. Buckle up for safety.

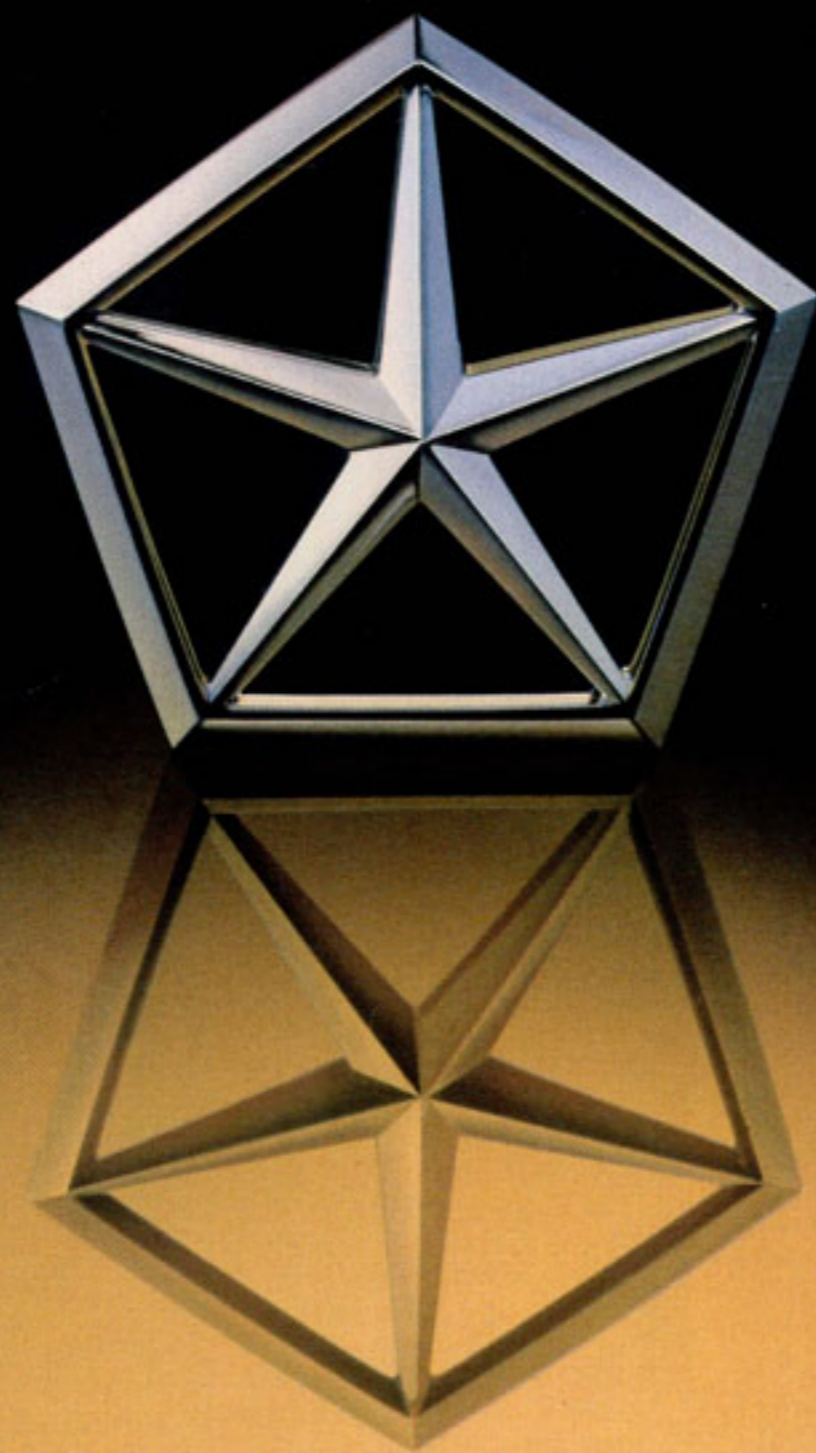
CONSIDER LEASING

In these days of tight money and high interest rates, more consumers are considering leasing as an alternative to buying. Leasing a new Chrysler Fifth Avenue usually involves a small security deposit and a first month's lease payment. Monthly payments are usually less than financing a new car purchase. Ask your dealer for details.

All product illustrations and specifications are based on authorized information. Although descriptions are believed correct at publication approval, accuracy cannot be guaranteed. Chrysler Corporation reserves the right to make changes from time to time, without notice or obligation, in prices, specifications, colors and materials, and to change or discontinue models. See your dealer for the latest information.

MOPAR parts are engineered by Chrysler Corporation for use in your new Chrysler Fifth Avenue. When replacement is necessary, be sure to specify MOPAR parts. Used by professional mechanics all over the world.





The Chrysler commitment:
To be the best...what else is there?

Lee A. Iacocca