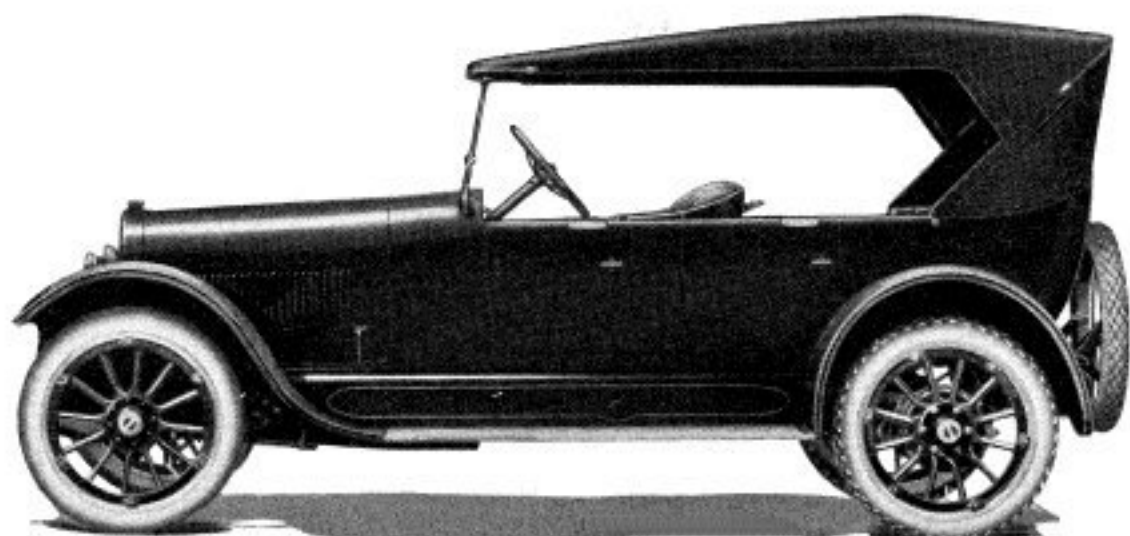


BUICK ROADSTER—44

COLOR	Body, Buick green; wheels, straw color	LUBRICATION	Splash with circulating pump
SEATING CAPACITY	Three	RADIATOR	Cellular
POSITION OF DRIVER	Left side	COOLING	Water pump
WHEELBASE	118 inches	IGNITION	High tension generator and storage battery
GAUGE	56 inches	STARTING SYSTEM	Single unit
WHEELS	Wood	STARTER OPERATED	Gear to fly wheel
FRONT TIRES	33 x 4 inches, cord	LIGHTING SYSTEM	Electric
REAR TIRES	33 x 4 inches, cord, anti-skid	VOLTAGE	Six to eight
SERVICE BRAKE	Contracting on rear hubs	WIRING SYSTEM	Single
EMERGENCY BRAKE	Expanding on rear hubs	GASOLINE SYSTEM	Vacuum
CYLINDERS	Six	CLUTCH	Dry plate multiple disc
HOW ARRANGED	Vertically	TRANSMISSION	Selective sliding
HOW CAST	En bloc	GEAR CHANGES	Three forward, one reverse
HORSEPOWER	27.34	DRIVE	Spiral bevel
(N.A.C.C. Rating)		REAR AXLE	Full floating
BORE AND STROKE	3 $\frac{1}{8}$ x 4 $\frac{1}{2}$ inches	STEERING GEAR	Screw and nut

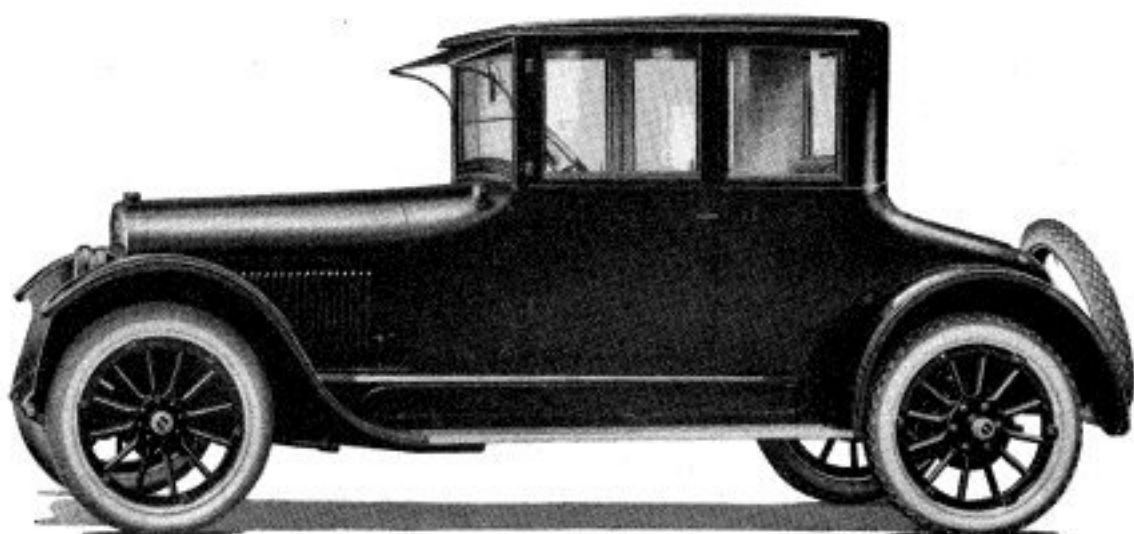
In addition to above specifications, price includes windshield, speedometer, ammeter, tire pump, electric horn and demountable rims.



BUICK TOURING—45

COLOR	Body, Buick green; wheels, straw color	LUBRICATION	Splash with circulating pump
SEATING CAPACITY	Five	RADIATOR	Cellular
POSITION OF DRIVER	Left side	COOLING	Water pump
WHEELBASE	118 inches	IGNITION	High tension generator and storage battery
GAUGE	56 inches	STARTING SYSTEM	Single unit
WHEELS	Wood	STARTER OPERATED	Gear to fly wheel
FRONT TIRES	33 x 4 inches, cord	LIGHTING SYSTEM	Electric
REAR TIRES	33 x 4 inches, cord, anti-skid	VOLTAGE	Six to eight
SERVICE BRAKE	Contracting on rear hubs	WIRING SYSTEM	Single
EMERGENCY BRAKE	Expanding on rear hubs	GASOLINE SYSTEM	Vacuum
CYLINDERS	Six	CLUTCH	Dry plate multiple disc
HOW ARRANGED	Vertically	TRANSMISSION	Selective sliding
HOW CAST	En bloc	GEAR CHANGES	Three forward, one reverse
HORSEPOWER	27.34	DRIVE	Spiral bevel
(N.A.C.C. Rating)		REAR AXLE	Full floating
BORE AND STROKE	3 $\frac{3}{8}$ x 4 $\frac{1}{2}$ inches	STEERING GEAR	Screw and nut

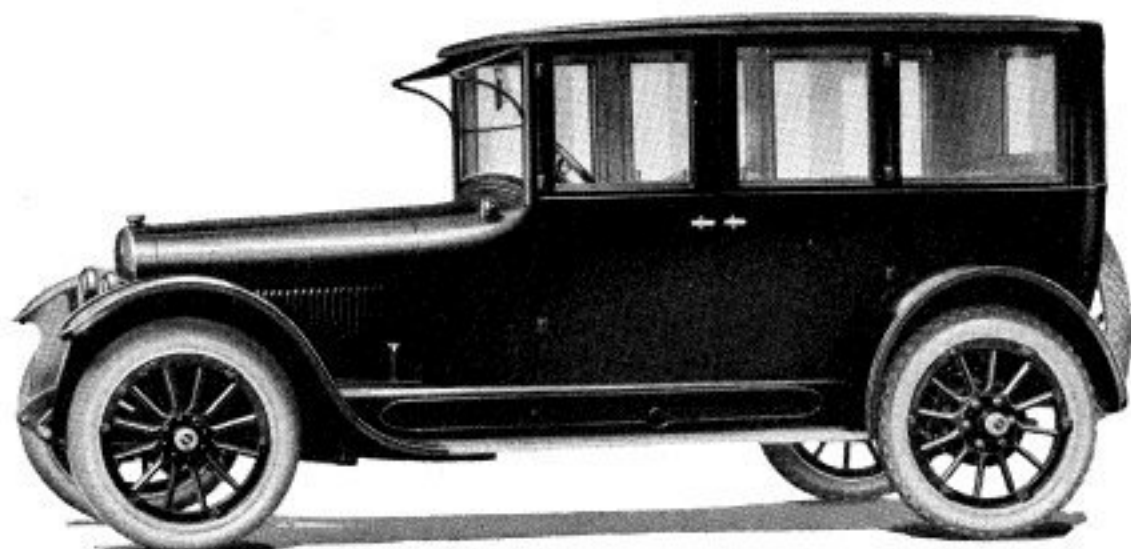
In addition to above specifications, price includes windshield, speedometer, ammeter, tire pump, electric horn and demountable rims.



BUICK COUPE—46

COLOR	Black	LUBRICATION	Splash with circulating pump
SEATING CAPACITY	Four	RADIATOR	Cellular
POSITION OF DRIVER	Left side	COOLING	Water pump
WHEELBASE	118 inches	IGNITION	High tension generator and storage battery
GAUGE	56 inches	STARTING SYSTEM	Single unit
WHEELS	Wood	STARTER OPERATED	Gear to fly wheel
FRONT TIRES	33 x 4 inches, cord	LIGHTING SYSTEM	Electric
REAR TIRES	33 x 4 inches, cord, anti-skid	VOLTAGE	Six to eight
SERVICE BRAKE	Contracting on rear hubs	WIRING SYSTEM	Single
EMERGENCY BRAKE	Expanding on rear hubs	GASOLINE SYSTEM	Vacuum
CYLINDERS	Six	CLUTCH	Dry plate multiple disc
HOW ARRANGED	Vertically	TRANSMISSION	Selective sliding
HOW CAST	En bloc	GEAR CHANGES	Three forward, one reverse
HORSEPOWER	27.34 (N.A.C.C. Rating)	DRIVE	Spiral bevel
BORE AND STROKE	3 $\frac{3}{8}$ x 4 $\frac{1}{2}$ inches	REAR AXLE	Full floating
		STEERING GEAR	Screw and nut

In addition to above specifications, price includes windshield, speedometer, ammeter, clock, tire pump, electric horn and demountable rims.



BUICK SEDAN—47

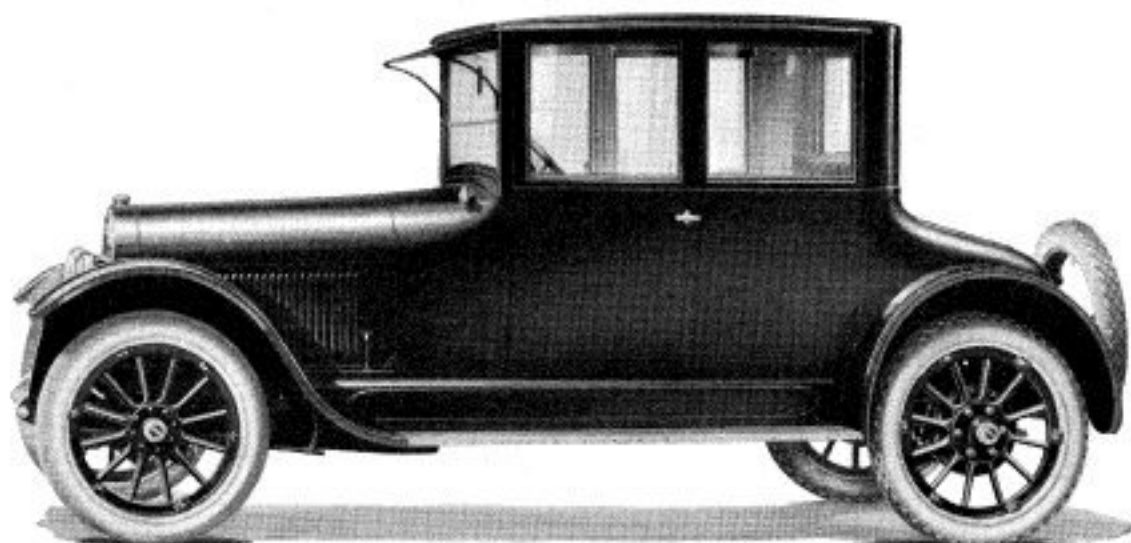
COLOR	Black	LUBRICATION	Splash with circulating pump
SEATING CAPACITY	Five	RADIATOR	Cellular
POSITION OF DRIVER	Left side	COOLING	Water pump
WHEELBASE	118 inches	IGNITION	High tension generator and storage battery
GAUGE	56 inches	STARTING SYSTEM	Single unit
WHEELS	Wood	STARTER OPERATED	Gear to fly wheel
FRONT TIRES	34 x 4½ inches, cord	LIGHTING SYSTEM	Electric
REAR TIRES	34 x 4½ inches, cord, anti-skid	VOLTAGE	Six to eight
SERVICE BRAKE	Contracting on rear hubs	WIRING SYSTEM	Single
EMERGENCY BRAKE	Expanding on rear hubs	GASOLINE SYSTEM	Vacuum
CYLINDERS	Six	CLUTCH	Dry plate multiple disc
HOW ARRANGED	Vertically	TRANSMISSION	Selective sliding
HOW CAST	En bloc	GEAR CHANGES	Three forward, one reverse
HORSEPOWER	27.34	DRIVE	Spiral bevel
(N.A.C.C. Rating)		REAR AXLE	Full floating
BORE AND STROKE	3¼ x 4½ inches	STEERING GEAR	Screw and nut

In addition to above specifications, price includes windshield, speedometer, ammeter, clock, tire pump, electric horn and demountable rims.

**BUICK MOTOR
COMPANY**

**F L I N T
M I C H I G A N**

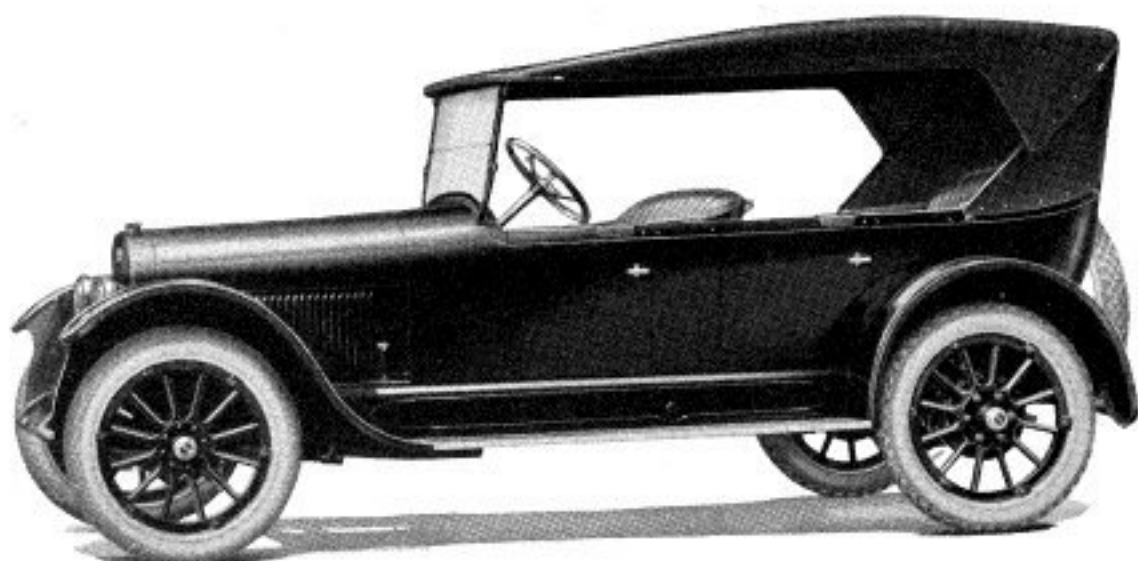
Price, \$2985



BUICK COUPE—48

COLOR	Buick blue	LUBRICATION	Splash with circulating pump
SEATING CAPACITY	Four	RADIATOR	Cellular
POSITION OF DRIVER	Left side	COOLING	Water pump
WHEELBASE	124 inches	IGNITION	High tension generator and storage battery
GAUGE	56 inches	STARTING SYSTEM	Single unit
WHEELS	Wood	STARTER OPERATED	Gear to fly wheel
FRONT TIRES	34 x 4½ inches, cord	LIGHTING SYSTEM	Electric
REAR TIRES	34 x 4½ inches, cord, anti-skid	VOLTAGE	Six to eight
SERVICE BRAKE	Contracting on rear hubs	WIRING SYSTEM	Single
EMERGENCY BRAKE	Expanding on rear hubs	GASOLINE SYSTEM	Vacuum
CYLINDERS	Six	CLUTCH	Dry plate multiple disc
HOW ARRANGED	Vertically	TRANSMISSION	Selective sliding
HOW CAST	En bloc	GEAR CHANGES	Three forward, one reverse
HORSEPOWER	27.34 (N.A.C.C. Rating)	DRIVE	Spiral bevel
BORE AND STROKE	3½ x 4½ inches	REAR AXLE	Full floating
		STEERING GEAR	Screw and nut

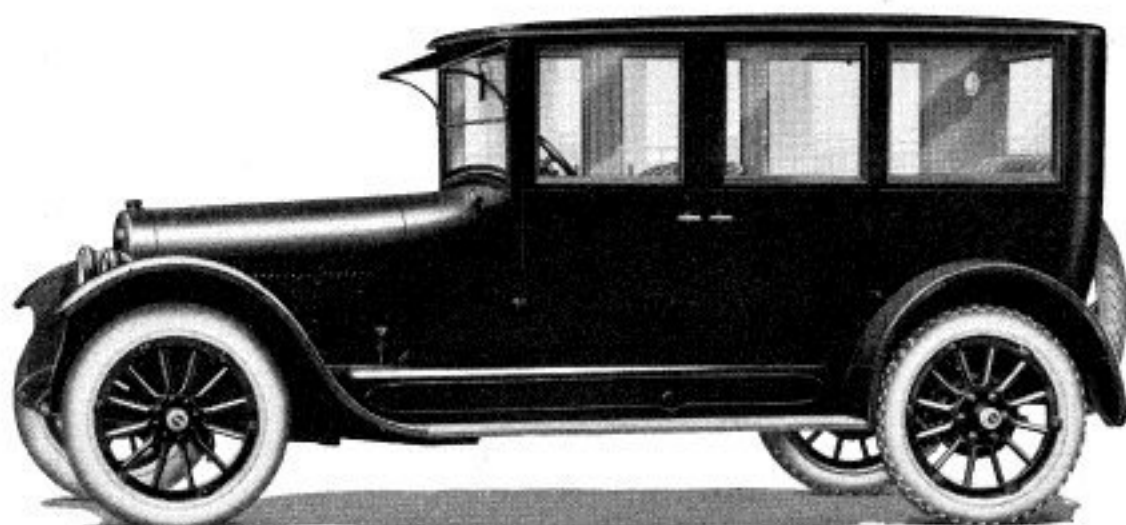
In addition to above specifications, price includes windshield, speedometer, ammeter, clock, tire pump, electric horn and demountable rims.



BUICK TOURING—49

COLOR	Buick blue	LUBRICATION	Splash with circulating pump
SEATING CAPACITY	Seven	RADIATOR	Cellular
POSITION OF DRIVER	Left side	COOLING	Water pump
WHEELBASE	124 inches	IGNITION	High tension generator and storage battery
GAUGE	56 inches	STARTING SYSTEM	Single unit
WHEELS	Wood	STARTER OPERATED	Gear to fly wheel
FRONT TIRES	34 x 4½ inches, cord	LIGHTING SYSTEM	Electric
REAR TIRES	34 x 4½ inches, cord, anti-skid	VOLTAGE	Six to eight
SERVICE BRAKE	Contracting on rear hubs	WIRING SYSTEM	Single
EMERGENCY BRAKE	Expanding on rear hubs	GASOLINE SYSTEM	Vacuum
CYLINDERS	Six	CLUTCH	Dry plate multiple disc
HOW ARRANGED	Vertically	TRANSMISSION	Selective sliding
HOW CAST	En bloc	GEAR CHANGES	Three forward, one reverse
HORSEPOWER	27.34 (N.A.C.C. Rating)	DRIVE	Spiral bevel
BORE AND STROKE	3¾ x 4½ inches	REAR AXLE	Full floating
		STEERING GEAR	Screw and nut

In addition to above specifications, price includes windshield, speedometer, ammeter, tire pump, electric horn and demountable rims.



BUICK SEDAN—50

COLOR	Buick blue	LUBRICATION	Splash with circulating pump
SEATING CAPACITY	Seven	RADIATOR	Cellular
POSITION OF DRIVER	Left side	COOLING	Water pump
WHEELBASE	124 inches	IGNITION	High tension generator and storage battery
GAUGE	56 inches	STARTING SYSTEM	Single unit
WHEELS	Wood	STARTER OPERATED	Gear to fly wheel
FRONT TIRES	34 x 4½ inches, cord	LIGHTING SYSTEM	Electric
REAR TIRES	34 x 4½ inches, cord, anti-skid	VOLTAGE	Six to eight
SERVICE BRAKE	Contracting on rear hubs	WIRING SYSTEM	Single
EMERGENCY BRAKE	Expanding on rear hubs	GASOLINE SYSTEM	Vacuum
CYLINDERS	Six	CLUTCH	Dry plate multiple disc
HOW ARRANGED	Vertically	TRANSMISSION	Selective sliding
HOW CAST	En bloc	GEAR CHANGES	Three forward, one reverse
HORSEPOWER	27.34 (N.A.C.C. Rating)	DRIVE	Spiral bevel
BORE AND STROKE	3¾ x 4½ inches	REAR AXLE	Full floating
		STEERING GEAR	Screw and nut

In addition to above specifications, price includes windshield, speedometer, ammeter, clock, tire pump, electric horn and demountable rims.
