



BUILT

BY BUICK



Marquette

built by BUICK

*The Marquette Six, built by Buick,
brings to its price field new standards of
excellence, new heights of performance,
and new conceptions of style and beauty*



I N T R O D U C T O R Y

MARQUETTE, companion six to Buick, comes into being as the result of a nation-wide demand for a motor car embodying the performance, comfort, and dependability that Buick craftsmen know so well how to provide . . . at a price within the reach of millions.

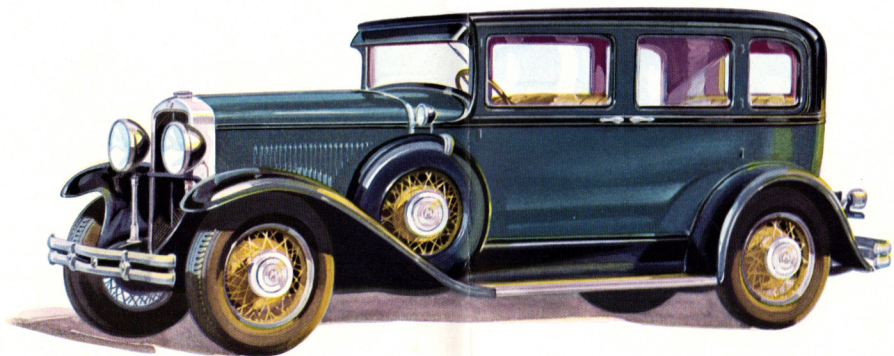
Built by Buick, Marquette includes every feature of modern motor car construction, plus the extra measure of performance and enduring, uninterrupted service assured by the manufacturing genius and skill which Buick has developed through more than a quarter of a century of fine car building. It is a smart motor car. It is a reliable motor car. It is tasteful in appearance, up to the minute in appointments and refinements, and far in advance of its class in ability to travel fast, far, and economically. It has been developed through intensive design and test over many months by the engineering staff of the Buick Motor Company—the largest in the entire industry—together with the vast engineering resources of the General Motors Corporation.

Marquette is a car that will appeal to every motorist and will at once win the allegiance of the many thousands who have long sought to obtain the extra value of Buick manufacture in a car of moderate price.

LONG, low, and rakish in appearance, yet providing more than an ordinary amount of room for five full-grown passengers, the new Marquette Five-Passenger Four-Door Sedan affords qualities of performance and standards of luxury and convenience heretofore never achieved in a moderate priced motor car. New abilities on the road in swiftness, brilliant acceleration, and enduring dependability—to these have been added the advantages of improved construction in its Body by Fisher, together with a host of unusual features that mark this Sedan an outstanding example of fine motor car manufacture.

Rich new upholsteries, in attractive and harmonious shades of rubber-backed mohair, grace its interior and insure the life of the coverings against water, dust, and wear. Marquette is the first to use this new material. The seats are low, full-backed, and deeply cushioned over coiled springs. The newly designed exterior hardware is chromium-plated while the interior fittings are richly nickeled. Among the standard features are adjustable driver's seat, adjustable steering column, military sun visor, new non-glare, Fisher VV ventilating windshield, rear view mirror, complete instrument panel, foot rest, dome light, ash receiver, and many other conveniences.

MARQUETTE
FIVE-PASSENGER FOUR-DOOR SEDAN
MODEL 37

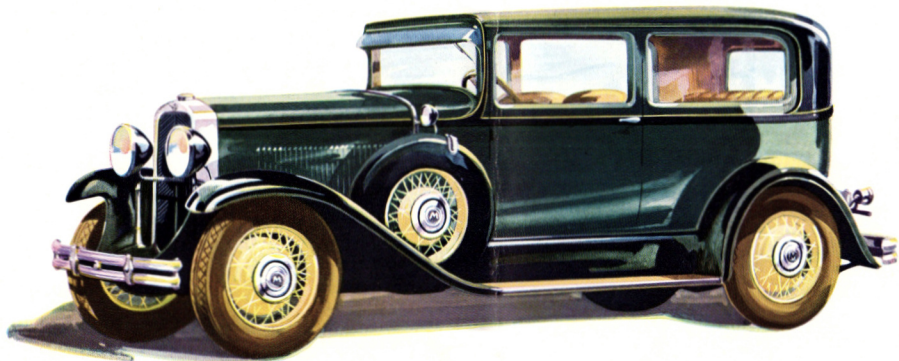


EXPRESSING the tempo of the age, without conforming to accepted patterns in appearance, this new Marquette Five-Passenger Two-Door Sedan provides the finest expression of economical closed car building that the combined craftsmanship of Buick and Fisher can provide. Essentially a family car, it is replete with features of comfort and convenience that place it clearly ahead of any motor car that has heretofore been offered at so low a price.

Easy access is given to its exceptionally spacious body by wide, substantial doors built with special care to prevent rattles and loosening under strain. All seats are low, comfortably pitched, and upholstered in genuine mohair over special compensating coiled springs. The upholstery material used represents an innovation in automotive coachcraft. The back of the fabric is impregnated with rubber to render it dust-proof, waterproof, and ten times more durable by actual test.

In addition to the new non-glare, Fisher VV windshield and chrome-plated exterior fittings, this Sedan offers adjustable steering column, adjustable driver's seat, automatic windshield wiper, military sun visor, dome light, ash receiver, foot rail, and hardware of period design.

MARQUETTE
FIVE-PASSENGER TWO-DOOR SEDAN
MODEL 30



EMBODYING all of the dependability and extra performance of a Buick-built product, this smart Marquette Two-Passenger Business Coupe is equally well suited for service in the small family or for the professional man.

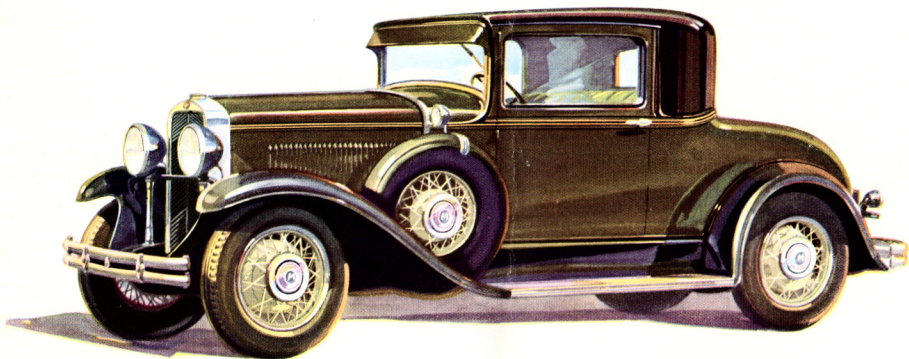
An exceptionally large rear deck compartment, which is reserved entirely for luggage or samples, and wide doors that open upon an unusually large seating space for two persons, are noteworthy features of this model.

The interior of its Body by Fisher is trimmed with the new rubber-backed mohair which insures long life and protection from dampness and dust. This is an innovation in automotive coachcraft, in that the back of the fabric is impregnated with rubber to render it dust-proof, waterproof, and ten times more durable by actual test. It is first introduced in the new Marquette.

The seat is adjustable for comfort for the driver, as is also the steering column.

The new non-glare, Fisher VV ventilating windshield, military sun visor, complete instrument panel, automatic windshield wiper, rear vision mirror, and dome light are further refinements. Low to the road, well balanced, and expressing its fleetness in every line, this model offers an ideal car for business and pleasure.

MARQUETTE
TWO-PASSENGER BUSINESS COUPE
MODEL 36



THOSE who ordinarily prefer the intimacy of a two-passenger enclosed car, yet occasionally wish to accommodate extra passengers, will find the Marquette Four-Passenger Special Coupe most attractive. This model fully expresses its name in its distinctive lines and colors and in the many comforts and conveniences that Fisher has built into its extremely attractive interior.

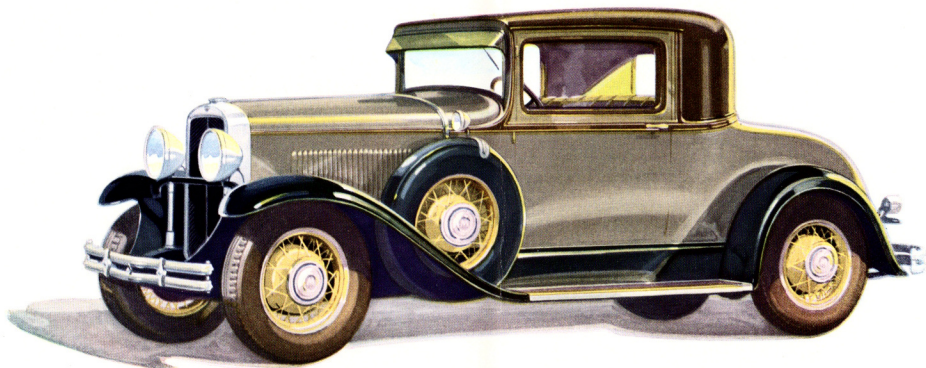
Unusually wide doors provide easy entrance to its inviting seat, upholstered in new waterproof, rubber-backed mohair. The seat is adjustable for maximum driving comfort, and the steering column is also adjustable.

The deck folds back to a spacious rumble seat for two more passengers, while a fully disappearing rear window brings them into intimate proximity with the driver and his companion. A side door opens to the luggage compartment.

The exterior hardware and headlamps are chromium-plated, as are the cowl lamps and the combination tail and stop light. Interior hardware is in nickel.

The new non-glare, Fisher VV ventilating windshield, automatic windshield wiper, rear vision mirror, military sun visor, and complete instrument panel with approved theft-proof lock are also standard equipment on this distinctive model.

MARQUETTE
FOUR-PASSENGER SPECIAL COUPE
MODEL 36-S

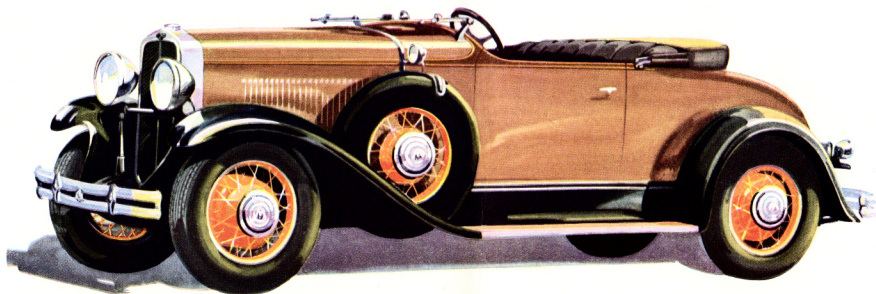


No finer offering has ever been made to young America for its pleasure hours than this smart, swagger Four-Passenger Sport Roadster. Designed to meet the rapidly returning demand for the open car for sports use and touring, this bright, lithe, and graceful car displays an extraordinary degree of snap and an extra reserve of power and stamina. It is capable of a maximum speed of from sixty-eight to seventy miles per hour, stop-watch timing.

No detail has been overlooked in its construction or in its appointments. A roomy, folding rumble seat accommodates two additional passengers in comfort, while driver and companion sit low in the tailored, form-fitting leather cushions. For golf clubs and other sports equipment, there is a side door leading into the luggage space beneath the driver's seat. Brilliantly chromium-plated headlamps, coil lamps, windshield fittings, and hardware add to its vivid sparkle. The windshield is of the folding and ventilating type and is equipped with an automatic wiper. The top with its chromium fittings and natural wood bows folds back compactly and raises easily to a storm-tight enclosure. Truly, the new Marquette Sport Roadster is all that its name implies . . . a fit companion for any venture or any purse.

MARQUETTE
FOUR-PASSENGER SPORT ROADSTER

MODEL 34



THE new and graceful lines of the Marquette radiator and cowl and the long, low sweep of its chassis are fully emphasized in the Five-Passenger Phaeton, which has been designed as an all-purpose open car of fresh distinction. Many people choose it for sport and outing use.

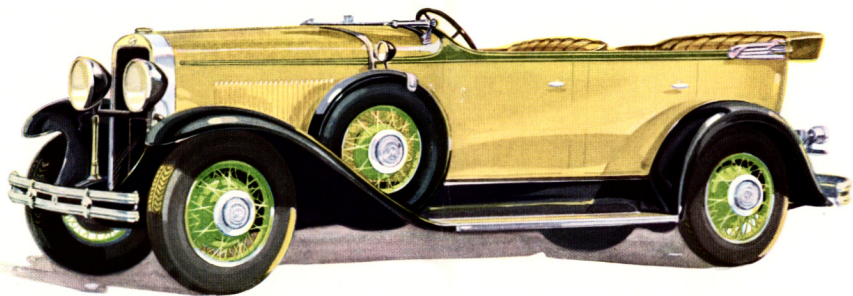
Both driving compartment and tonneau are unusually large, with room for five full-grown passengers. The cushions and backs are form-fitting and are upholstered in genuine leather of excellent quality.

The top is neatly designed of durable fabric and is equipped with weatherproof side curtains that open with the doors. It folds back snugly and compactly for pleasant weather driving, and is fitted with a smart boot to match.

The windshield is both folding and ventilating and is fitted with an automatic windshield wiper and rear vision mirror.

Headlamps, cowl lamps, and exterior hardware, sparkling with rich and glistening chromium plate, lend snap and brilliance to its appearance; while such conveniences as adjustable steering column, combination tail and stop light, and complete instrument panel add to the enjoyment of driving this attractive car.

MARQUETTE
FIVE-PASSENGER PHAETON
MODEL 35



S P E C I F I C A T I O N S

ENGINE

Six cylinders, 67½ h. p., bore 3¼ in., stroke 4¾ in., piston displacement 212.8 cu. in., L-head type; 75 lb. counterbalanced crankshaft of special carbon steel, steel-backed bearings, silchrome exhaust valves, pressure lubrication system, thermostat-controlled cooling system, transmission standard sliding gear type in unit with engine, clutch—single plate type.

CHASSIS

114 in. wheelbase, 28 x 5.25 low pressure tires, turning circle 38.6 ft.

REAR AXLE

Semi-floating, pressed steel, ratio 4.5 to 1, semi-elliptic springs of silicon-manganese steel, Hotchkiss drive, self-adjusting spring shackles.

FRONT AXLE

Reverse-Elliott type. Semi-elliptic springs, self-adjusting spring shackles.

BRAKES

Mechanical Duo-Servo internal four-wheel type.

GENERAL

Capacity of gasoline tank, 16 gallons; capacity of cooling system, 3 gallons; AC gas pump and fuel strainer, AC air cleaner, AC oil filter, crankcase ventilation, automatic heat control to carburetor, Lovejoy hydraulic shock absorbers, front and rear; tilt-ray headlamps, combination tail light and stop light, 13-plate battery, dome lamp, hydrostatic gasoline gauge on dash, coincidental ignition and car lock, spark control on dash, automatic windshield wiper, rear view mirror, sheet metal cover for gas tank, Delco-Remy electrical system, pressure gun lubrication system, tire carrier.

Special equipment at slight additional cost—wire wheels, demountable wood wheels, fender wells, and trunk rack.