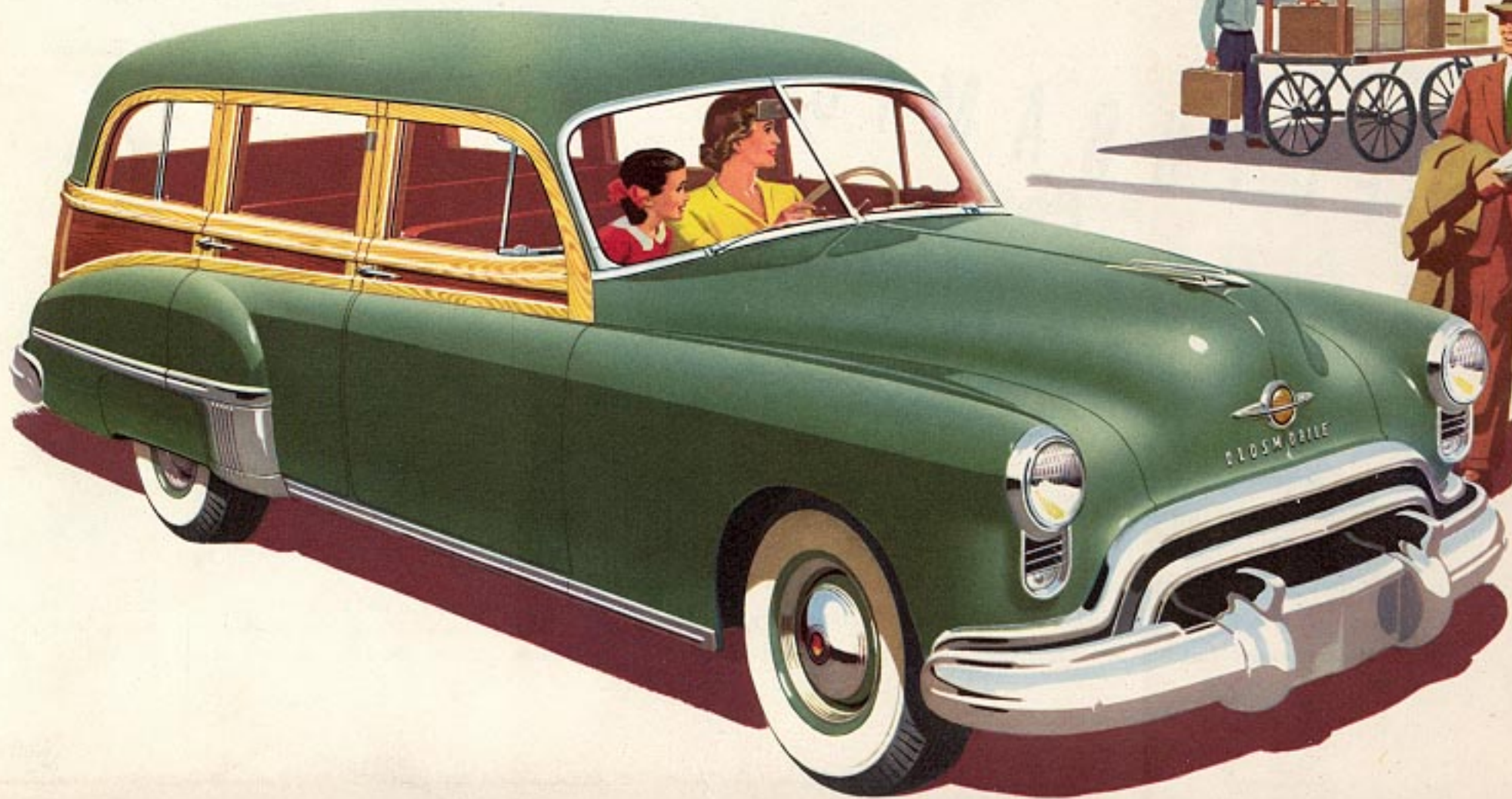


FUTURAMIC

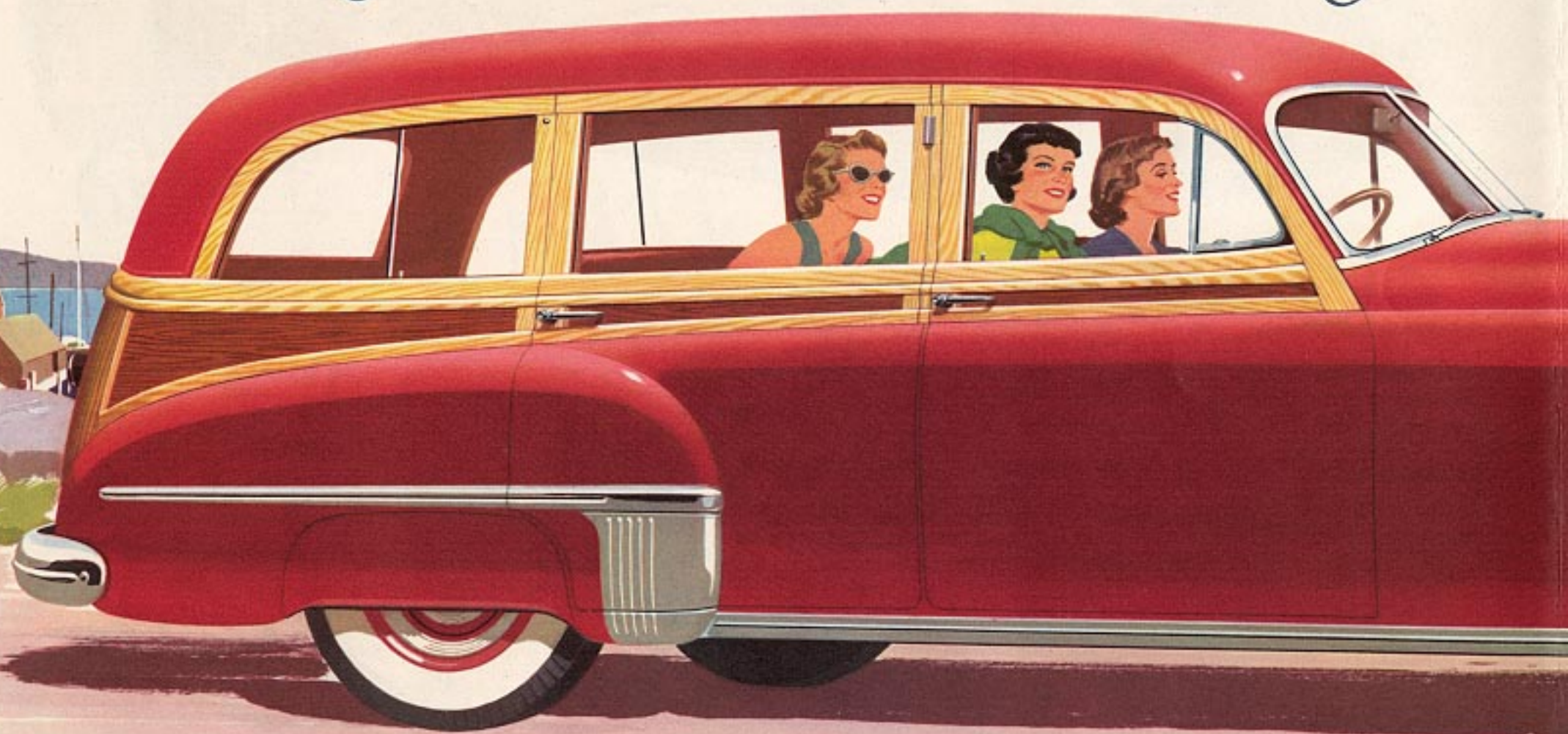
OLDSMOBILE

Station Wagon

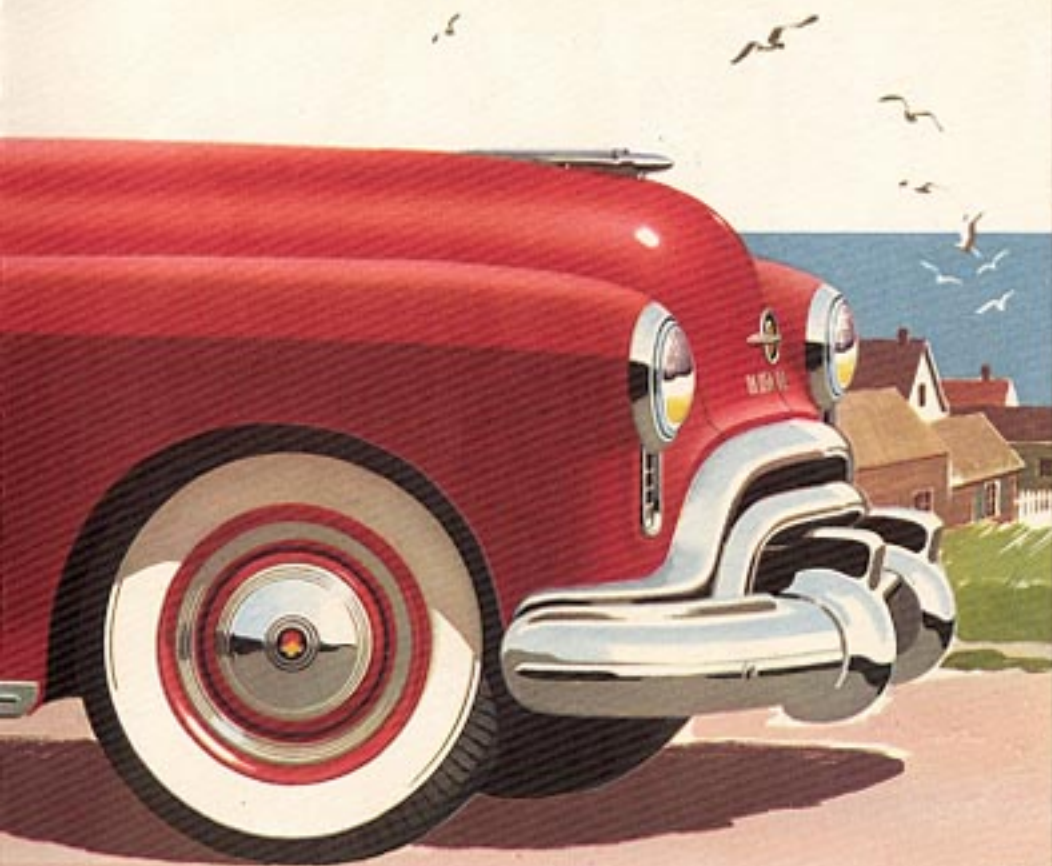


PLEASE

Beauty—with a Double Duty!



MEET the first Futuramic Station Wagon—a matchless car for freedom and fun or for general utility use. It has the free-flowing lines which characterize the greatest name in styling—FUTURAMIC. And there are two new engines available—the high-compression “Rocket” Eight and the new “Big Six.” Here is an ideal all-purpose car—smart good looks, “The New Thrill” in performance, plus an amazing adaptability to your everyday needs!



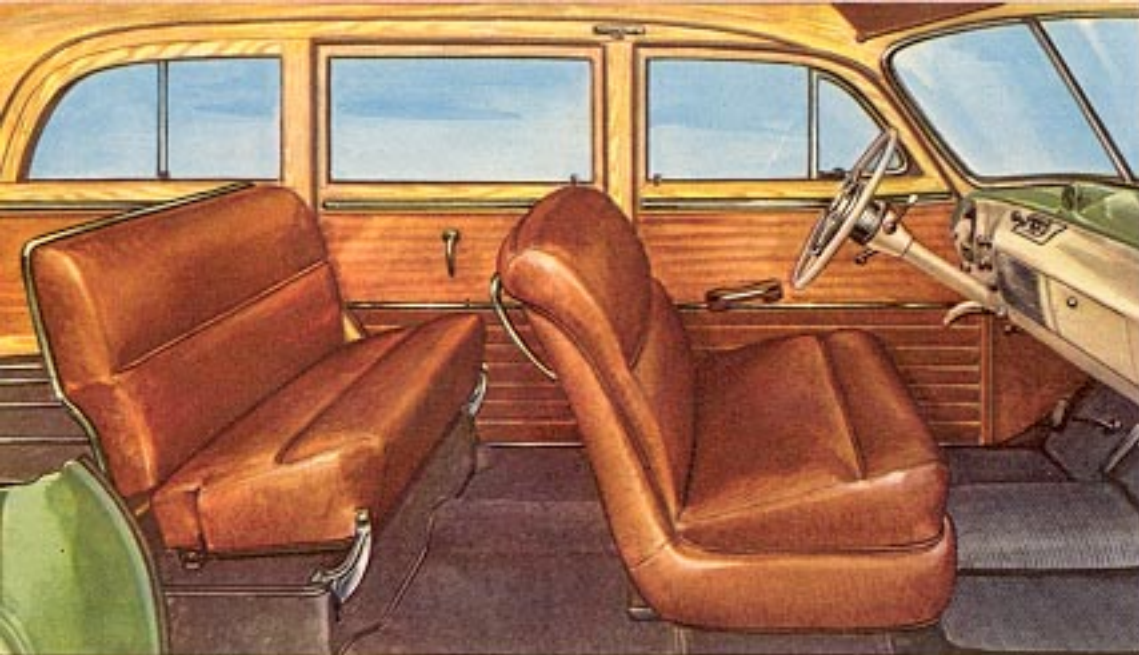
1 SIX CAN RIDE IN SOLID COMFORT

Six persons are never crowded here. Seats front and back are full width and deep. Tastefully tailored in leather upholstery on a base of foam rubber, each seat provides ample room for three adults—with space for *all* their luggage in the completely carpeted rear compartment.



2 REAR SEAT FOLDS FLUSH WITH FLOOR

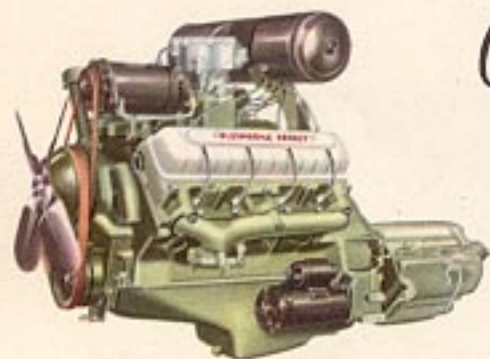
Oldsmobile presents another new feature. A slight pressure on the back of the rear seat . . . and presto! The seat folds forward flush with the floor. Instantly, there's more than 28 sq. ft. of level luggage space available. It's a Futuramic feature—finger-tip control for extra room.



New Smartness

IN INTERIOR STYLING!

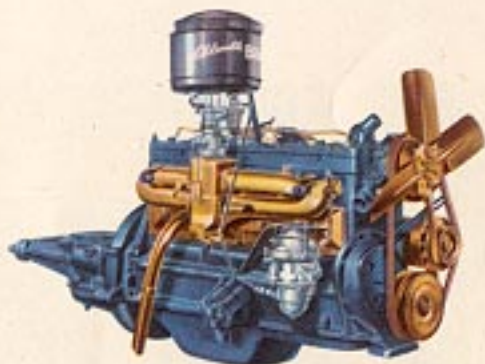
Here for the first time is Futuramic styling in a Station Wagon. Inside this brand new Body by Fisher, the smart good taste of Futuramic design is instantly evident . . . in the sleek simplicity of the dash—the superb color combinations—leather upholstery—mahogany veneer panels—and De Luxe hardware and appointments throughout.



A New Thrill

IN FLASHING PERFORMANCE!

The Futuramic "88" Station Wagon is powered by the high-compression "Rocket" Engine—the smoothest, most responsive motor in its field. The Futuramic "76" has new power with the remarkable "Big Six" Engine. No matter which you choose, you'll know what we mean by Oldsmobile's "NEW THRILL!"



Specifications

SIX-CYLINDER ENGINE—The "BIG SIX"—Bore, 3-17/32 inches; stroke, 4 1/2 inches; displacement, 257 cubic inches. Taxable horsepower, 29.9. Brake horsepower, 105 at 3400 r.p.m. Electro-Hardened Aluminum Alloy Pistons fitted with two compression and two oil control rings. Full-pressure lubrication to all main, connecting rod, and camshaft bearings, timing chain, piston pins, and cylinder walls.

CLUTCH AND TRANSMISSION—Single plate, dry disc clutch. All-Silent Synchro-Mesh Transmission.

HYDRA-MATIC DRIVE—Optional at extra cost.

FUEL AND COOLING SYSTEM—Down-draft carburetion with built-in automatic choke. Thermostatically controlled cooling and recirculation system. Ball-bearing, permanently lubricated and permanently sealed water pump.

EIGHT-CYLINDER ENGINE—The "ROCKET"—Bore, 3 3/4 inches; stroke, 3-7/16 inches; displacement, 303 cubic inches. Taxable horsepower, 45. Brake horsepower, 135 at 3600 r.p.m. Pistons are of the auto-thermic type reinforced with two steel struts—with two compression and one oil control ring. Full-pressure lubrication to all main, connecting rod, and camshaft bearings, piston pins, timing chain, and cylinder walls.

HYDRA-MATIC DRIVE—Standard on "88" models.

FUEL AND COOLING SYSTEM—Dual down-draft carburetion with automatic choke. Thermostatically controlled cooling and recirculation system. Ball-bearing, leakproof, permanently lubricated and permanently sealed water pump.

GENERAL SPECIFICATIONS

ELECTRICAL SYSTEM—Under-hood battery, 17-plate, 115-ampere-hour capacity on the "88"; 15-plate, 100-ampere-hour capacity on the "76." Air-cooled generator with automatic charging control. Solenoid-type starter. Unit-type Sealed-Beam headlights with foot selector switch.

BRAKES—Super-Hydraulic, self-energizing type. Cast iron braking surfaces. Mechanical parking brake on rear wheels. All brakes completely sealed. Brake lining area, 191.7 square inches on the "88"; 159.8 square inches on the "76."

SUSPENSION—Quadri-Coil Springing, with Knee-Action front suspension and heavy coil springs at rear. 4-way Stabilization through dual stabilizing arms, front and rear ride stabilizers and lateral stabilizer at rear. Double-action hydraulic shock absorbers, front and rear.

Wheelbase 119 1/2" Over-all Length 204-11/16"
 Over-all Width 75-3/16"
 Tire Size 7.60 x 15 Turning Circle Diameter 40'

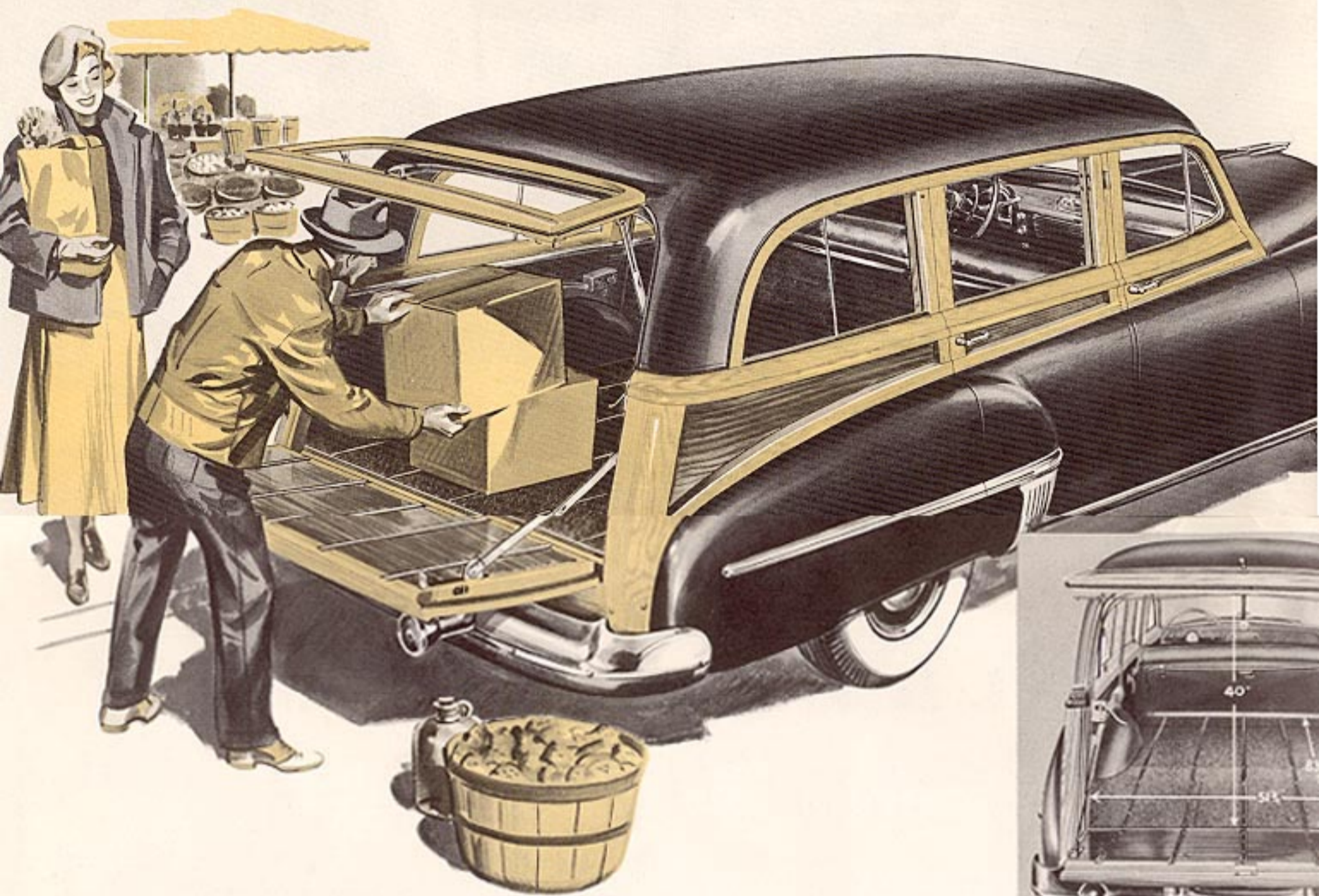
INTERIOR DIMENSIONS

Luggage Capacity—Second Seat Down 80 Sq. Ft.
 Width of Floor at Tail Gate 51 3/4"
 Height at Tail Gate Center 37"
 Luggage Floor Length—Second Seat Down 83"
 Luggage Floor Length—Second Seat Up 50"
 Luggage Floor Length—Tail Gate Open 108"

Oldsmobile's FUTURAMIC STATION WAGON



Here's the model that was meant for you to suit *all* occasions! For commercial and alike, this smart new Oldsmobile Station Wagon is the all-purpose value. Those flowing Futuramic lines make this utility vehicle a "traveling showcase" . . . reflect prestige on your business. And the flowing ease of Automatic Drive takes the tension out of city traffic drive up route and delivery work. Business and pleasure when you own this Futuramic Oldsmobile Station



It's easy to load your Futuramic Station Wagon. The tail gate folds down flush with the floor and slides in smoothly on the 5 stainless steel rails.

FUTURAMIC Features

A choice of the "Rocket" Engine or the "Big Six" power plant; Chromium-Plated Door Hardware and Pipe Rails; De Luxe Foam Rubber Seat Cushions; Leather Trim; Carpet Mats in tonneau and rear compartment to match trim; Extra-Low-Pressure Tires; Chrome Windshield Garnish Moldings; Lustrous De Luxe Instrument Cluster; De Luxe Steering Wheel and Horn Button; De Luxe Electric Clock and Automatic Glove Compartment Light; Stainless Steel Wheel Trim Rings; Imitation Leather Kick Pads on front and rear doors; Imitation Leather Covers on wheel housings; Mahogany Veneer Paneling; Chrome E.Z.I. Rear Vision Mirror; Turn Signal; Rear Fender Panels; Sparkling Colors and All-Leather Upholstery.



The spare tire and tool kit are neatly concealed in floor recesses yet they are conveniently available whenever you need them.



With the rear seat folded down, the Station Wagon has plenty of room for big adults, and extra space for smaller ones.

... styled
 private use
 passed in
 make your
 profitable
 of Hydra-
 ... speeds
 mix ...
 on!



... The sturdy
 bulky articles
 kid moldings.



... Futuramic
 of room for six
 cargo behind.



The rear seat folds down flush with the floor, giving you an abundance of rear compartment room for carrying extra luggage and equipment.

Smart

FOR COMMERCIAL USE, TOO!



SMALL PARCEL DELIVERY

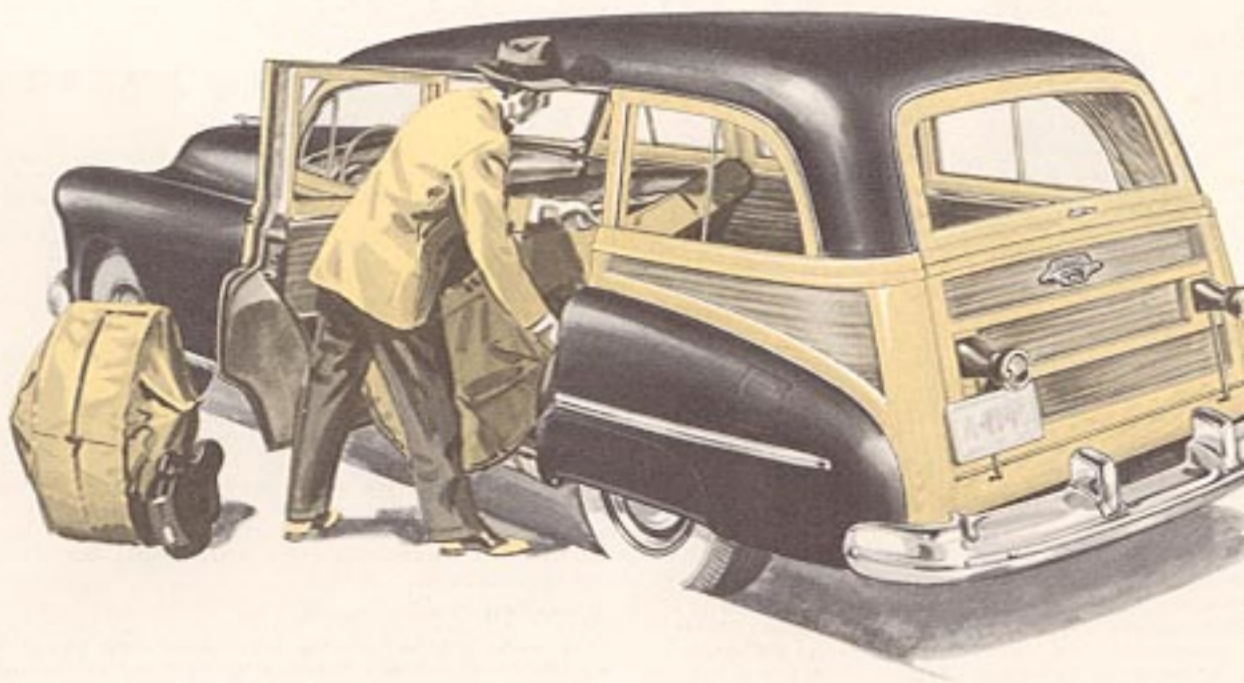


COMPANY CARS



FLORISTS

It's Ideal for: Florists • Grocers • Tailors •
 Laundries • Druggists • Retail Liquor Dealers
 • Salesmen • Realtors • Diaper Services • Linen
 Supply Services • Orchestras • Book Stores •
 Athletic Groups • Dry Cleaners • Farmers •
 Bakers • Country Clubs • Resorts • Hotels . . . in
 fact, all "smart" commercial establishments.



S I D E - D O O R A C C E S S I B I L I T Y