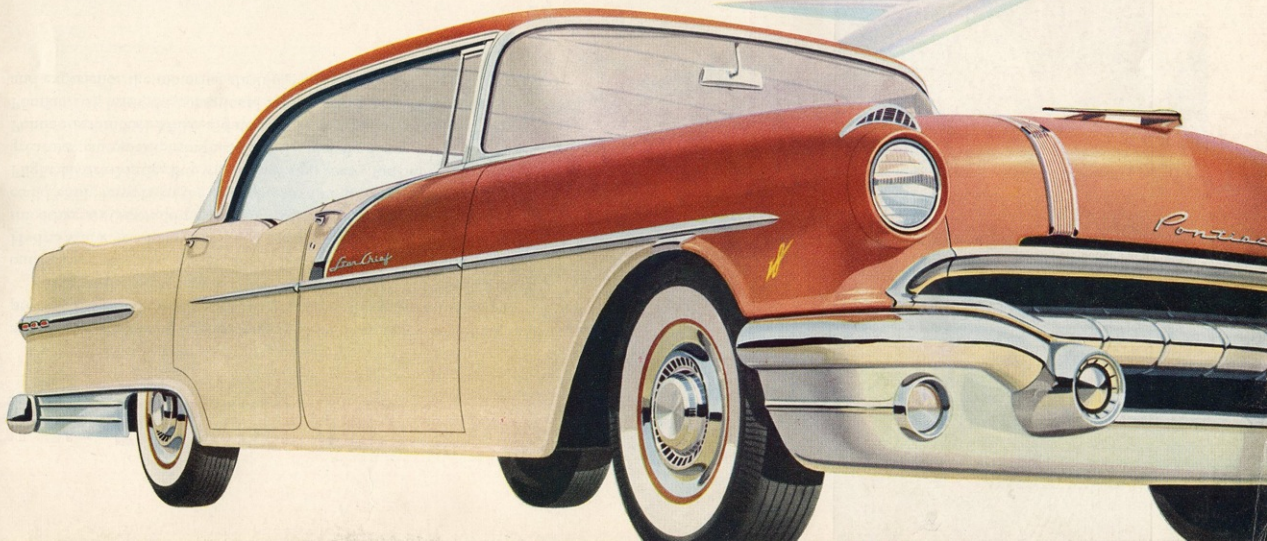


the fabulous '56

***Strato-Streak***

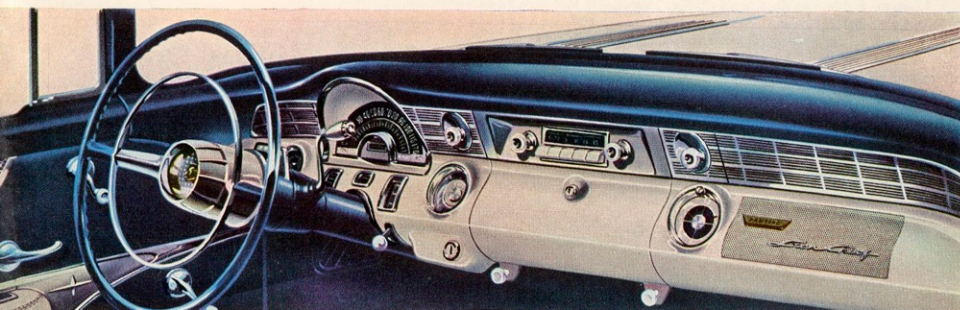
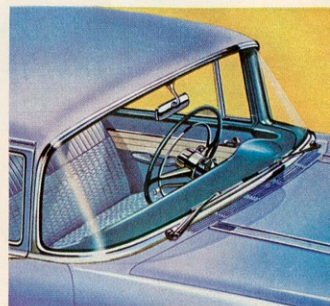
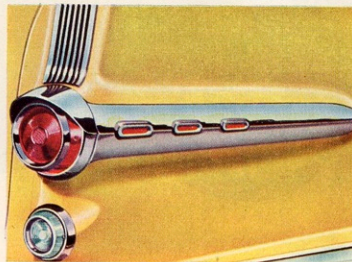
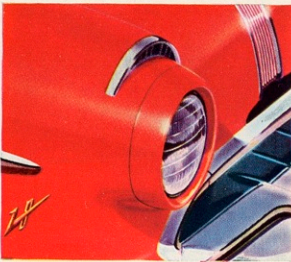
**PONTIAC**



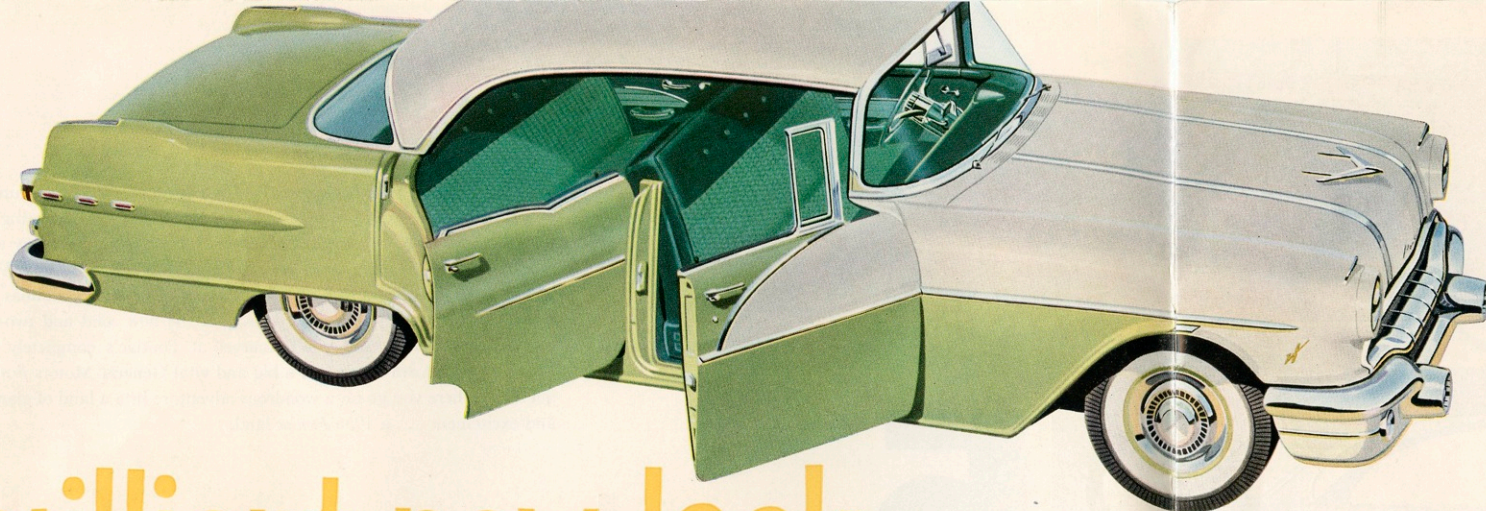


You are about to embark on a spirit-lifting adventure into the future. As you turn the following pages an exciting new concept of motoring will unfold before your very eyes. You'll see 15 fabulously styled new automobiles . . . powered by dynamic new 227- and 205-h.p. Strato-Streak V-8's. You'll thrill to the glamour of Pontiac's new Four-door Catalinas . . . marvel at the vitality and sheer beauty of the new solid and two-tone color combinations. And you'll marvel at Pontiac's completely new Strato-Flight Hydra-Matic . . . a big and vital General Motors *first!* So get set . . . here you go on a wondrous adventure into a land of glamour and excitement . . . a 1956 *Pontiac* land.

# 15 smart new models dramatically styled... dynamically powered!

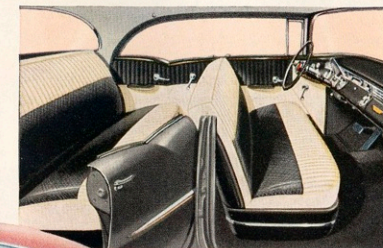




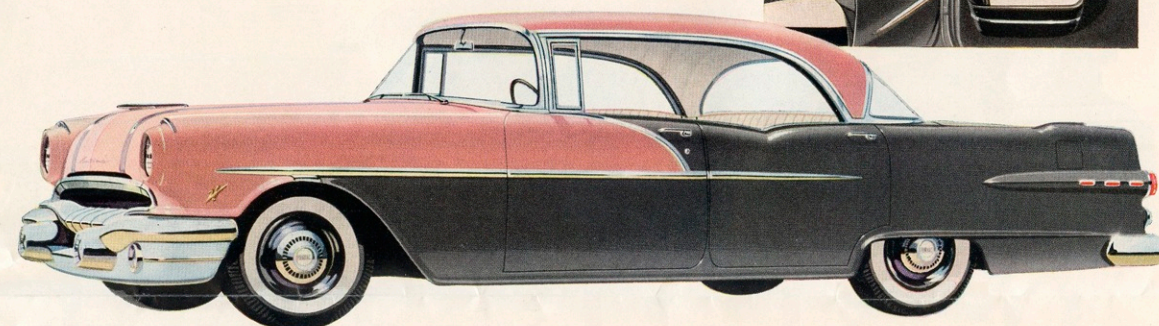


## Pontiac 870 Four-door Catalina

Step right in . . . the viewing is wonderful! Then sit back and take an imaginary trip into a world of tomorrow . . . in a car of tomorrow. Picture yourself in full command of this dazzling new automobile . . . proud indeed of its sleek, no-post hardtop appearance . . . and happy, too, about its easy-entry four-door sedan convenience and new Vogue Two-Toning design. Choose one of the forty-nine color combinations (Nimbus Grey-Tarragon Green shown) and one of the nine absolutely beautiful interiors and make the 1956 Pontiac 870 Four-door Catalina your car!

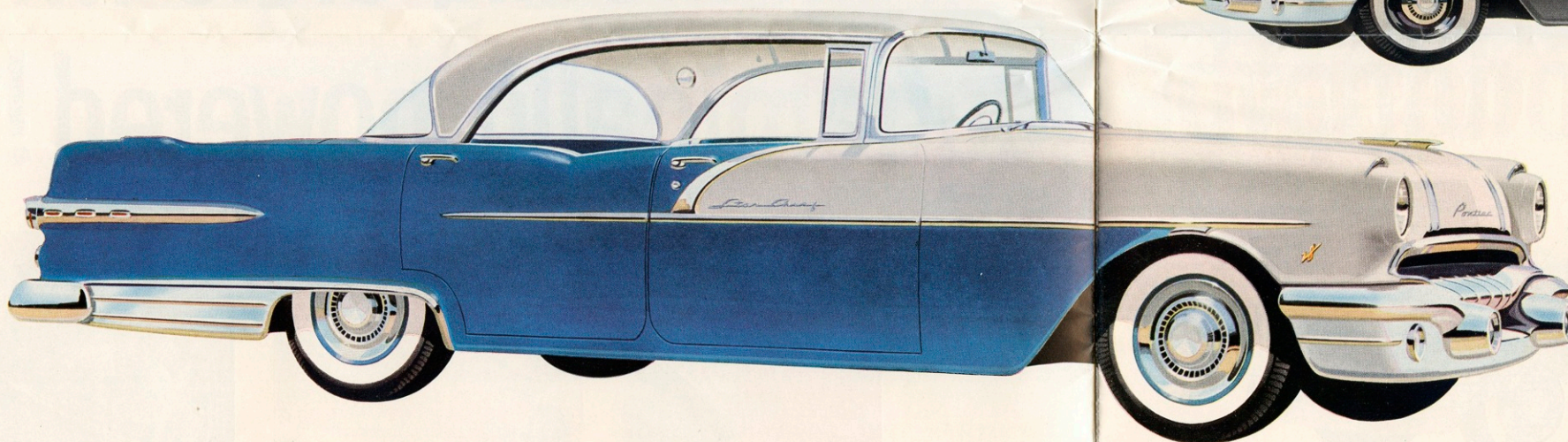


brilliant new look  
to a wonderful idea!



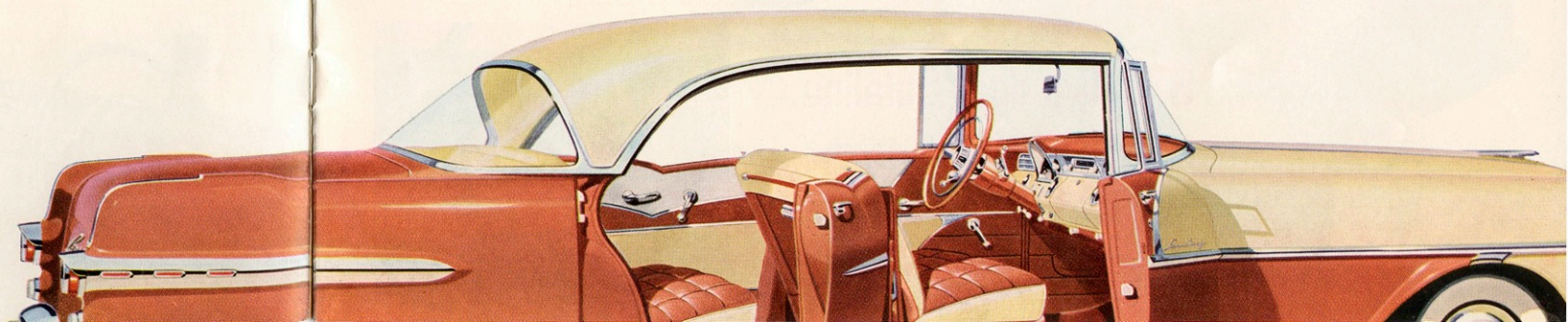
## Pontiac 860 Four-door Catalina

Careful . . . one look at this beauty and she'll steal your heart. But, confidentially, you'll love the experience . . . for here is a new approach to motoring. Check the new four-door hardtop styling . . . truly breath-taking isn't it? There's no doubt about it . . . Pontiac has turned the trick again, especially when you consider how easy this no-post beauty is to own. Never has a car of this size, luxury and beauty been priced so low. Choose from six interiors, forty-nine color combinations (Phantom Grey-Camellia shown).



## Pontiac Star Chief Four-door Catalina

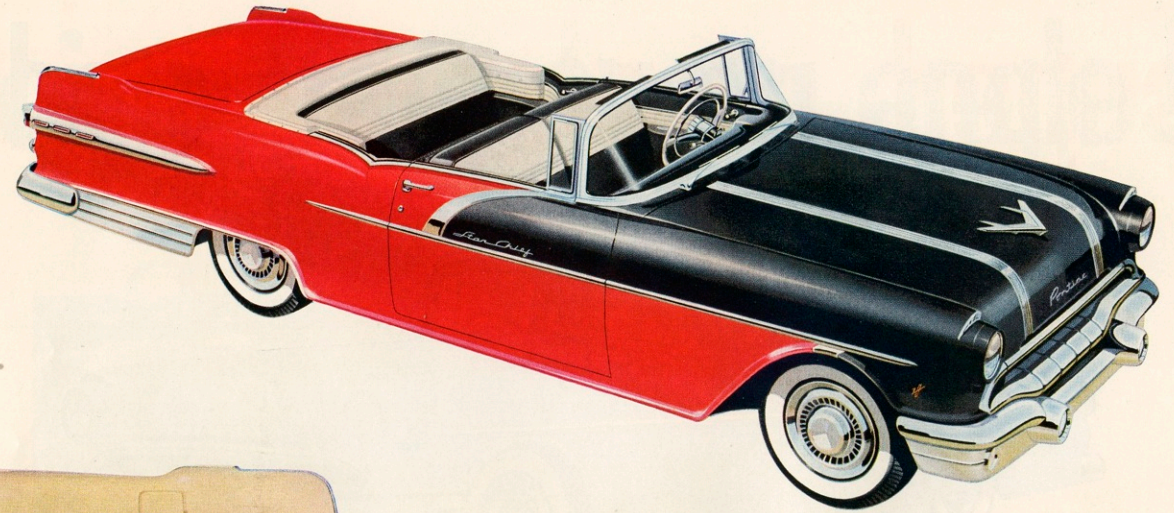
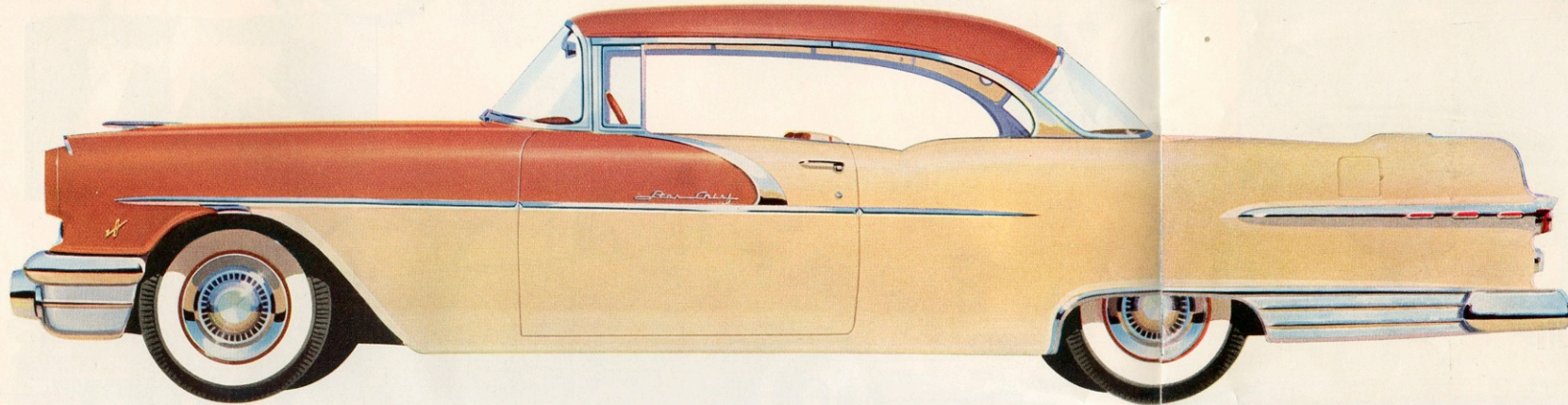
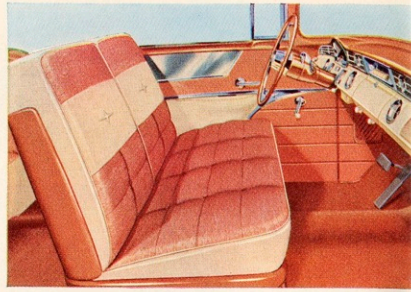
Let yourself go and go the way your fancy flies . . . straight up to the fabulous Star Chief Four-door Catalina. Pontiac stylists threw convention to the winds and created a car vitally different in design. So step right up and meet the four-door, no-post hardtop champion! Choose from four magnificent interiors in either all hand-buffed, top-grain leather or leather and nylon-faced fabric to harmonize with eight solid or two-tone combinations of Sandalwood, Sun Beige, Catalina Blue or Nimbus Grey.





## Pontiac Star Chief **Two-door Catalina**

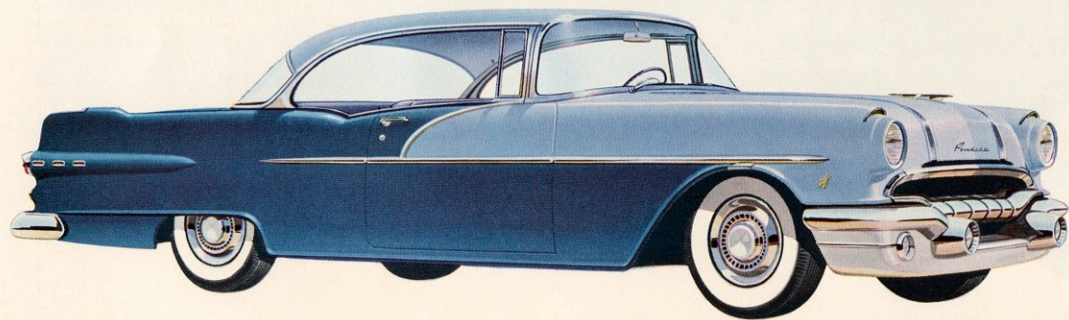
Did you hear that sigh? . . . that was thousands of others just like you reacting to their first view of the breath-taking '56 Star Chief Two-door Catalina. How can you help yourself when you see such beauty? From the gleaming chrome rear fender paneling to the clean, bold look of the rear end with its three brilliant stars . . . and even to the masterful design of the stainless steel wheel discs, no car has ever captured the heart of America in such an overwhelming way. Choose one of eight custom solid or two-tone combinations (the Sandalwood-Sun Beige option is shown) and either all hand-buffed, top-grain leather or leather and nylon-faced fabric harmonizing interiors.



## Pontiac Star Chief **Convertible**

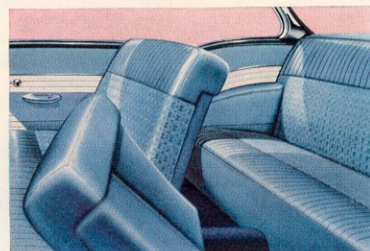
An open invitation to a thrilling new experience . . . come aboard for a flight into the future in the fantastically beautiful Strato-Streak V-8 powered '56 Star Chief Convertible. Wherever you go admiring eyes will look your way . . . and no wonder, Pontiac's startling new Vogue Two-Toning and dramatic grille design will definitely make you the center of attraction. Choose one of the four interior options and one of the forty-nine exciting color combinations (Raven Black-Bolero Red shown).

**bold in design... adventurous in spirit!**



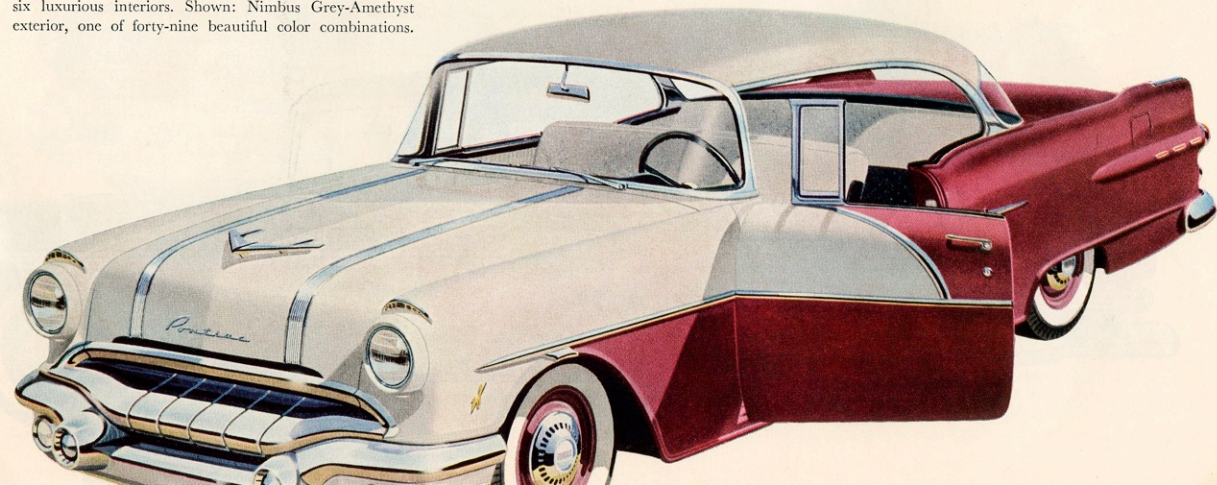
## Pontiac **870 Two-door Catalina**

Pardon us while we boast . . . but here's a sheer stroke of genius! There's a beautiful blending of Silver-Streak styling and interior design (nine choices altogether) about this 870 Catalina, while beneath the hood surges the Strato-Streak V-8 and hidden to the eye lies a reason for Pontiac's easy handling . . . the recirculating ball-type steering gear. Shown: Vista Blue-Chesapeake Blue, one of forty-nine combinations.



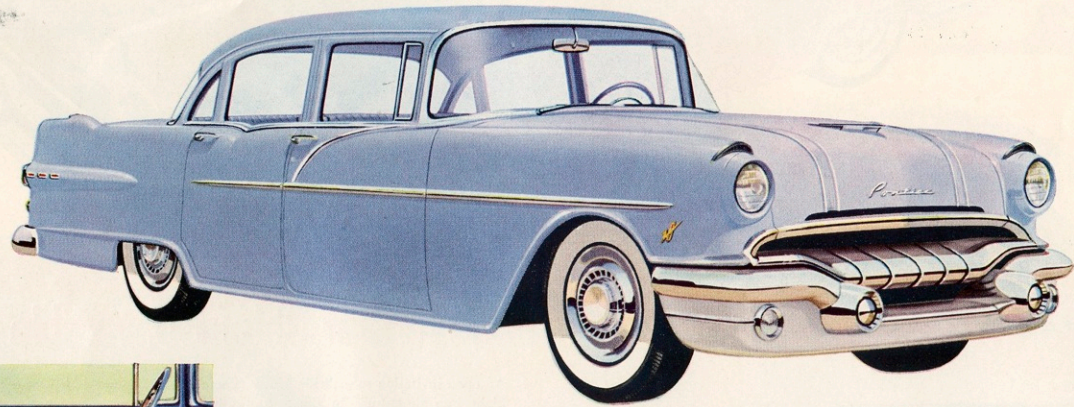
How can anyone stay calm . . . excitement, thrills and adventure are so much a part of this new, low-priced addition to the great Pontiac line. Note the clever rear fender, reflectorized chrome panels and the sleek new appearance to Pontiac's famed twin silver streaks. Choose from six luxurious interiors. Shown: Nimbus Grey-Amethyst exterior, one of forty-nine beautiful color combinations.

## Pontiac **860 Two-door Catalina**



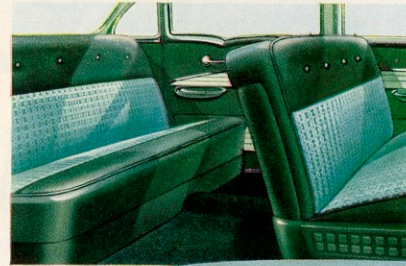
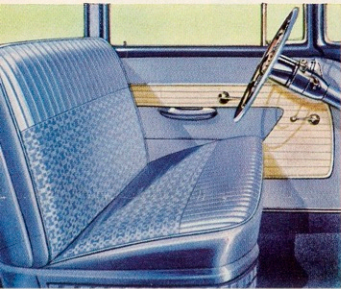


# superb new beauty and poise from every angle!



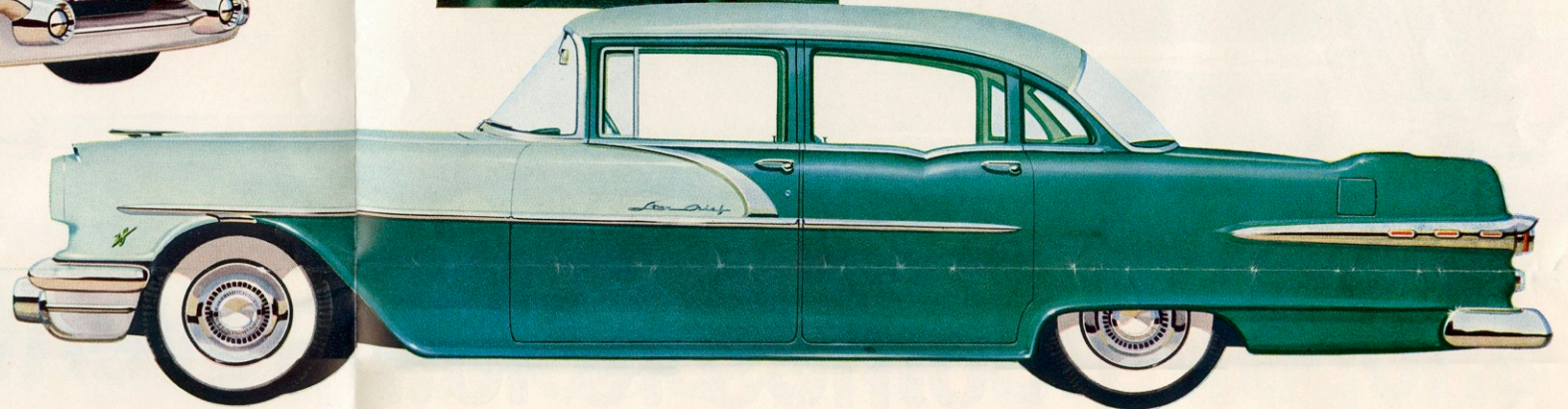
## Pontiac 870 Four-door Sedan

Mark this as a leader . . . a leader in looks, a leader in get-up-and-go and so definitely a leader in downright value. Of course, it's simple to describe this great new car, but words cannot reveal its exceedingly rare beauty and spirited personality. For example, inspect the modernistic handling of Pontiac's new gull-wing grille and massive bumpers. Take your choice of six interior options and forty-nine color combinations (Vista Blue shown).



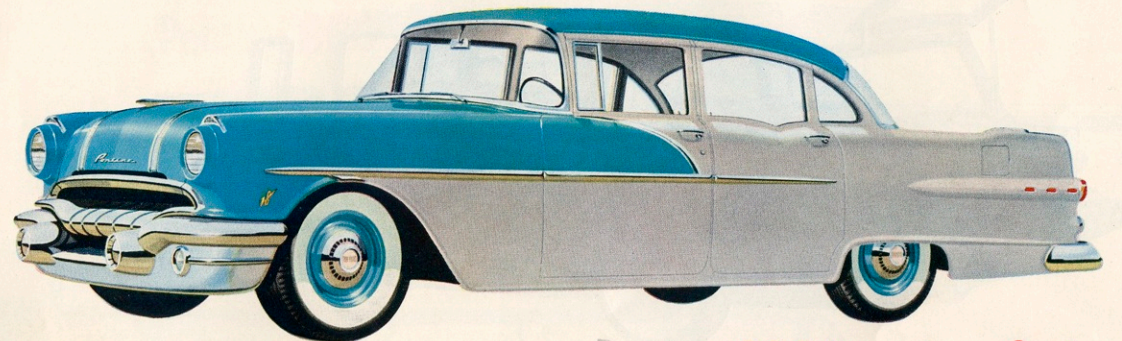
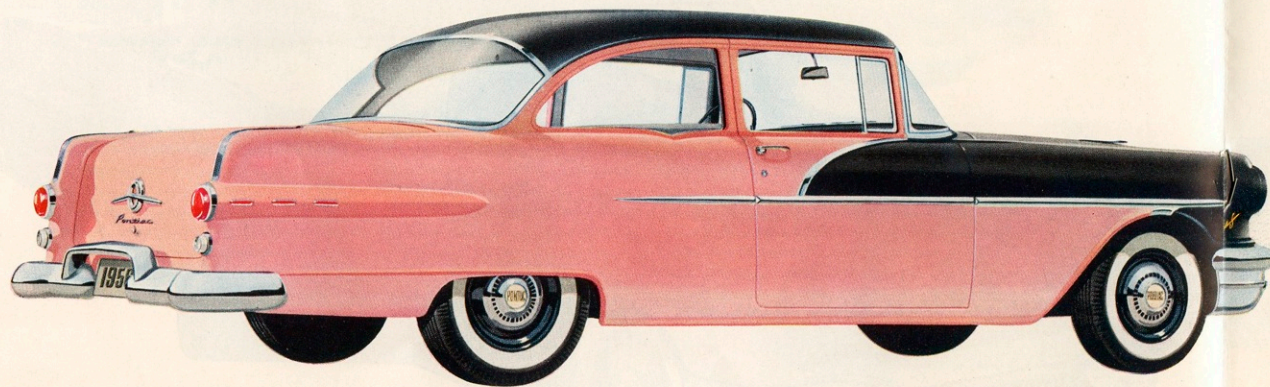
## Pontiac Star Chief Four-door Sedan

Graceful . . . subtle of line and design, yet bursting with boundless energy and the yen to go. Never has any automobile captured so beautifully America's great desire for a *finer* family car . . . one endowed with distinctive poise and yet alive with appearance and performance vitality. Certainly, the sleek new 1956 Star Chief Four-door Sedan is a shining example of the Pontiac idea; and that is to build a truly fine car priced in a range all America can enjoy. Make your selection from the six available interiors and forty-nine handsome color combinations (Hialeah Green-Glendale Green shown) . . . and make this your family car.



## Pontiac 860 Two-door Sedan

The easiest way to get into a truly *fine* car at a price well within your means! And let no one fool you on this score . . . Pontiac's new 860 Two-door Sedan is not a stripped-down version of a higher-priced model! Nowhere else will you find such de luxe appointments as twin sun visors, arm rests *both* front and rear, cigar lighter and ash trays in a car of Pontiac's size, weight, performance and price! Make your choice now from forty-nine exterior color combinations (Raven Black-Camellia is shown) and six exciting interiors.



## Pontiac 860 Four-door Sedan

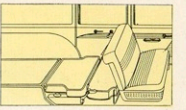
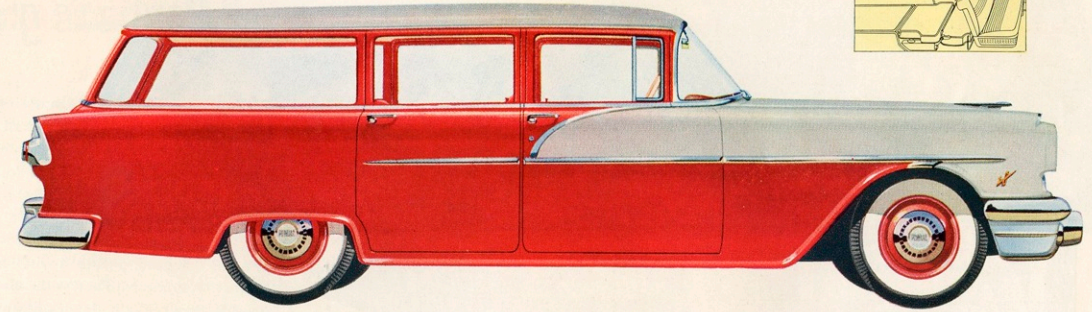
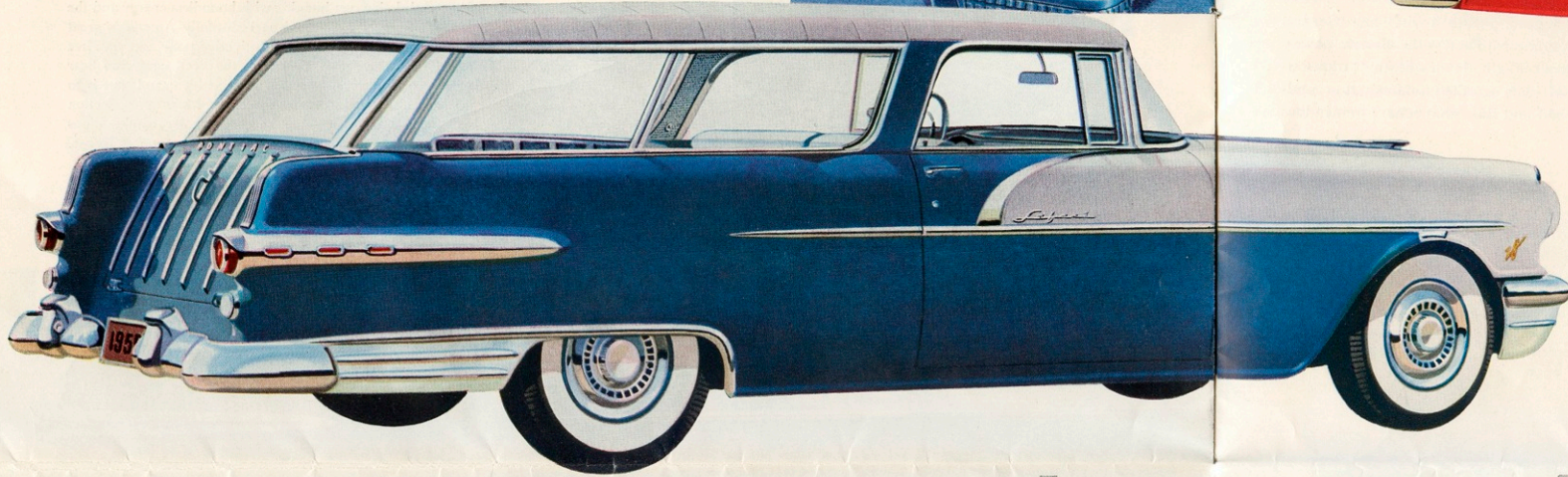
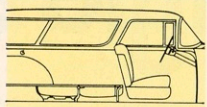
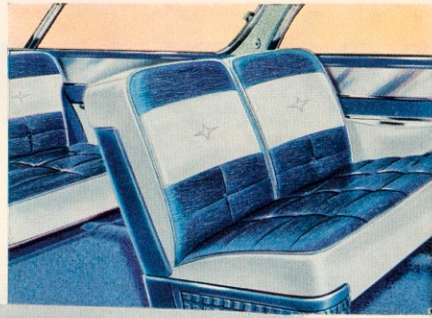
Count them . . . six, yes, six absolutely beautiful interiors and forty-nine Vogue Two-Tone or solid exterior color combinations (shown: Olympic Blue-Nimbus Grey). The selection is something out of this world . . . and out of this world, too, is the thrilling new side chrome trim design of Pontiac's lowest-priced, Strato-Streak V-8 powered four-door sedan. Here's a car that's going to take America by storm for nowhere will you find such remarkable beauty and go at such a low price.





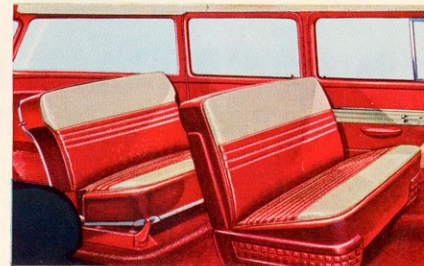
## Pontiac Star Chief Safari

Steady as you go . . . a steady, versatile servant for any occasion you'd like to mention. Vacation, the prom, an evening at the club or a trip to the farm, the Pontiac Safari seems to belong in a wonderful eye-catching way. And more than eye-catching is the dramatic sedan-like window styling, wraparound rear windows and distinctive tailgate design. Choose either all hand-buffed leather or leather and nylon-faced fabrics to harmonize with the eight custom exterior colors (Catalina Blue-Nimbus Grey shown).

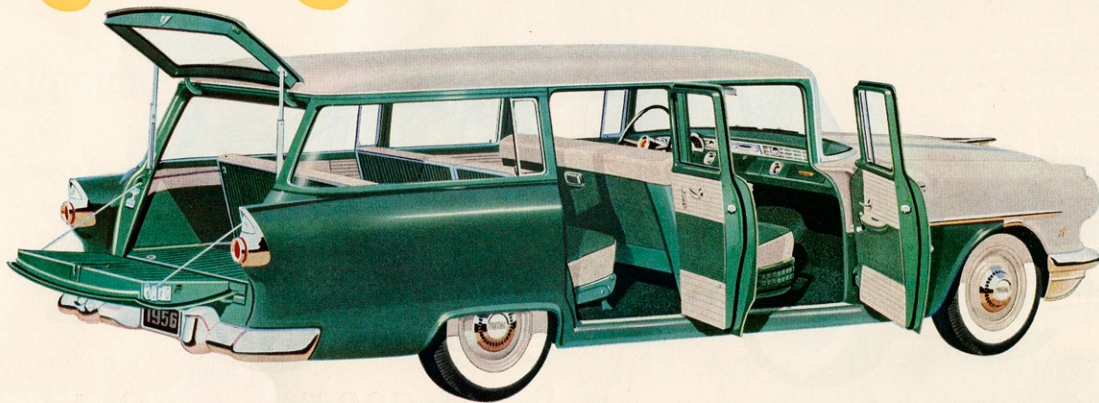


## Pontiac 870 Four-door Station Wagon

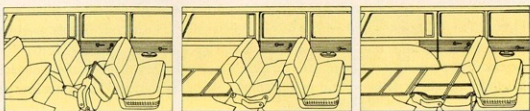
When is a station wagon not a station wagon? Answer . . . when it's a '56 Pontiac 870! This versatile new automobile will carry almost any kind of a load you wish from furniture to power lawn mowers and do it with the greatest of ease. Then switch to the convenience of a sedan in a matter of minutes. Even the carrying compartment is finished in a de luxe manner . . . and look at the space you have . . . nearly 7½ feet long with the tailgate closed and over 9 feet with the tailgate open! Select one of the three new interiors and one of the forty-nine eye-catching new color combinations. Nimbus Grey-Bolero Red shown.



high style comes to low-priced station wagons!



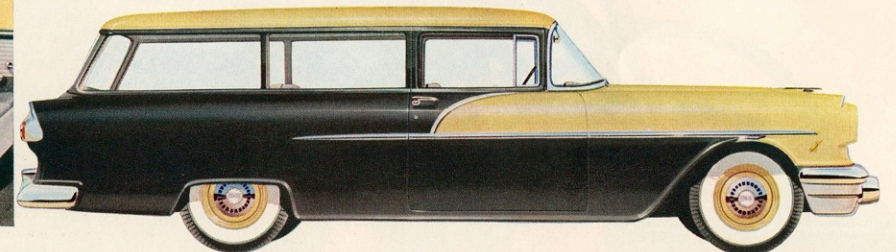
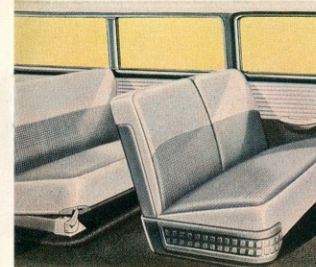
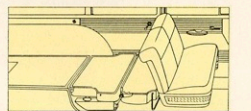
## Pontiac 860 Four-door Station Wagon



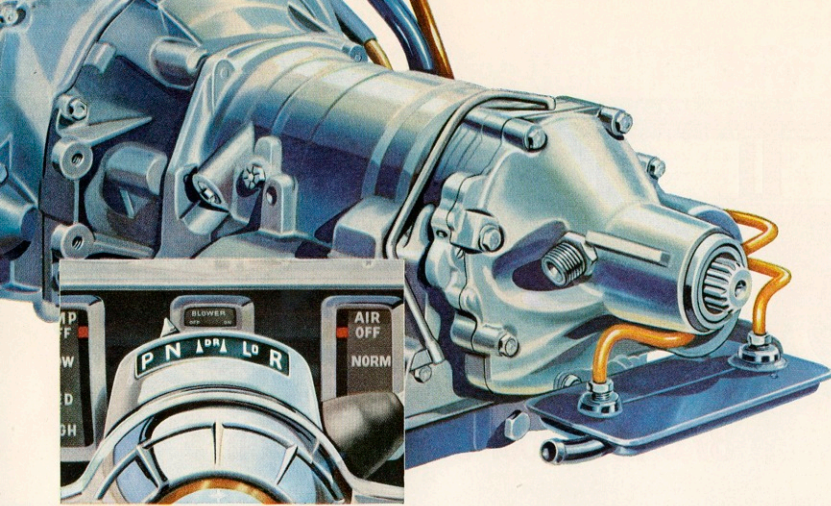
Name the job and the new 860 Four-door, nine-passenger Station Wagon does it for you in such a convenient way. The third-seat cushions can be removed completely, while the second seat folds in sections for complete entry and carrying ease. With the third seat removed, you have at your command over 4 feet of carrying space; with the second seat folded flush, nearly 7½ feet in length. Choose one of three interiors, forty-nine color combinations (Nimbus Grey-Glendale Green shown).

## Pontiac 860 Two-door Station Wagon

A turn of the key, a touch of your toe and you're off on the motoring thrill of your life. And thrills come by the barrelful when you own the new 1956 Pontiac 860 Two-door, six-passenger Station Wagon, for by nature it is one of the most versatile cars ever built. Fold the second seat flush with the floor and you have a carrying space nearly 7½ feet in length. Choose one of the three interior options and forty-nine color combinations (Grenada Gold-Raven Black is shown).







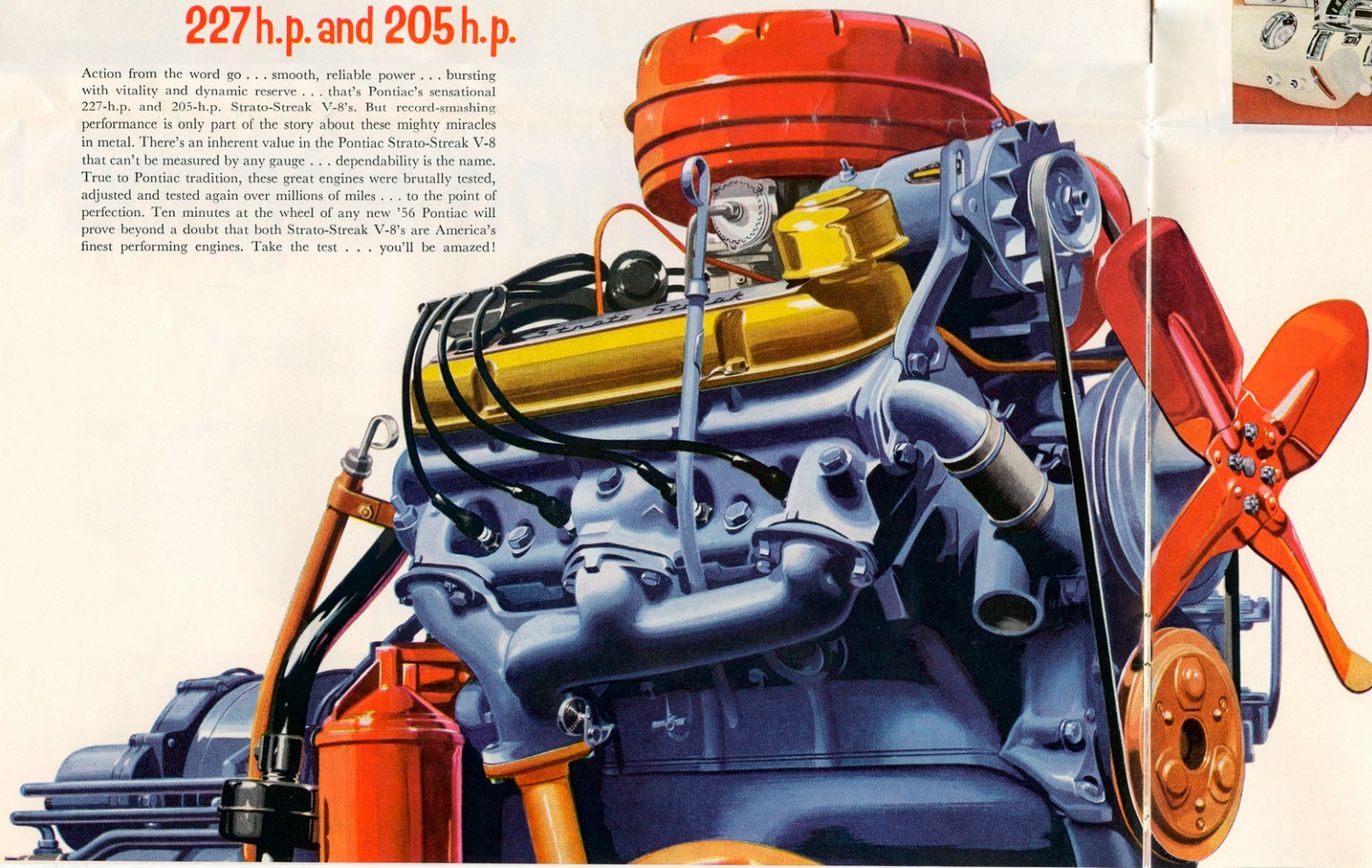
## Pontiac's great new

Every so often a milestone in motoring is achieved. Look back over the years and recall the gigantic steps that have been taken to raise the automobile to a point of perfection. Pontiac has led the way consistently with engineering advancements far-reaching in scope. Now, in the great year of 1956, Pontiac once again steps proudly into the foreground with a vital new General Motors "Automotive First"—the all-new, power-smooth Strato-Flight Hydra-Matic\* transmission. Several years ago the fundamental groundwork was laid and since that time a tremendous

## Two Great new Strato-Streak V-8's

### 227 h.p. and 205 h.p.

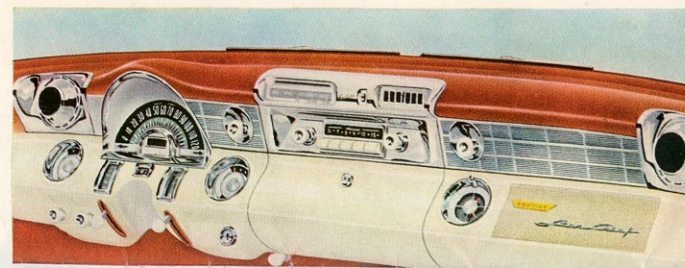
Action from the word go . . . smooth, reliable power . . . bursting with vitality and dynamic reserve . . . that's Pontiac's sensational 227-h.p. and 205-h.p. Strato-Streak V-8's. But record-smashing performance is only part of the story about these mighty miracles in metal. There's an inherent value in the Pontiac Strato-Streak V-8 that can't be measured by any gauge . . . dependability is the name. True to Pontiac tradition, these great engines were brutally tested, adjusted and tested again over millions of miles . . . to the point of perfection. Ten minutes at the wheel of any new '56 Pontiac will prove beyond a doubt that both Strato-Streak V-8's are America's finest performing engines. Take the test . . . you'll be amazed!



## Strato-Flight Hydra-Matic

amount of effort and approximately 2 million miles of testing and proving have been wisely spent in perfecting this new transmission.

Why is the great new Pontiac Strato-Flight Hydra-Matic such an outstanding motoring achievement? Because here is true and recognized Hydra-Matic economy coupled perfectly to thrilling power-flow smoothness. Outstanding driving economy with velvet smoothness could easily have been the only objective in developing the new Strato-Flight Hydra-Matic. But we did not stop there, for built right into this great new automatic transmission is the lifelong dependability for which Pontiac is famous! Make a date to take a drive in a brilliant new '56 Pontiac . . . with the sensational new Strato-Flight Hydra-Matic . . . and experience the motoring thrill of your life.



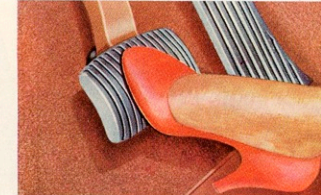
## air conditioning

Move the lever to ON . . . then sit back and enjoy the most relaxing drive you've ever had. Pontiac's new no-draft Air Conditioning\* delivers wonderful cooling, dust-, smoke- and pollen-filtered air immediately at your command. Furthermore, you can set the controls to admit outside air or adjust to recirculate inside air to obtain the coolness you like. Pontiac's all-up-front system keeps your trunk completely free for easy carrying, eliminates need for unsightly ducts.

## motoring is even more fun with Pontiac-designed ACCESSORIES!

- |                                   |                                 |
|-----------------------------------|---------------------------------|
| De luxe radio, antenna            | New lighted hood ornament       |
| Electramatic signal-seeking radio | Remote-control rear-view mirror |
| Rear fender electric antenna      | Instrument panel safety cushion |
| Dual rear radio speakers          | New rear fender shields         |
| New dual-exhaust system           | Chrome wire wheel discs         |
| Comfort Control Front Seat        | Nylon or plastic seat covers    |
| Gleaming chrome grille guard      | Full-flow oil filter            |
| Rear bumper wing guards           | Oil-bath air cleaner            |
| Foot-control windshield washer    | Chrome continental tire kit     |

\*Optional at extra cost



## power brakes

Pontiac has found virtually perfect balance in power brakes . . . balance in smoother, safer, easier stops combined with important "brake feel". Although stops with Pontiac's Power Brakes\* are almost effortless, thorough "brake feel" is retained for ideal control. You slip behind the wheel of a Pontiac and try it.



## power seat

Not two-, not four-, but six-way Power Seat . . . I Count them . . . forward, back, up, down, tilt forward and tilt back . . . all by just a simple touch of the controls. Actually, the number of seat positions is virtually limitless. You set the seat just the way you like. Try a new Pontiac Power Seat\* . . . it's comfort magic!

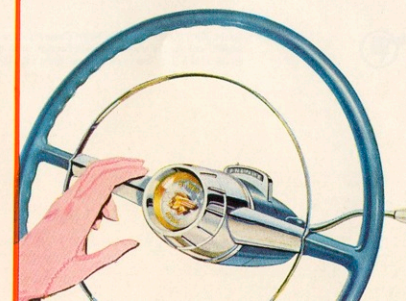


## power windows

Easy does it . . . wherever you sit! From the driver's spot you can control all vertical-moving windows by the touch of a button . . . raise or lower the windows to just the height you want without moving an inch. Passengers can control their own vertical-moving Power Windows\* by separate switches on door panels.

## power steering

Pontiac Power Steering\* takes over up to 87% of the effort otherwise needed on hard, difficult turns, yet allows you to retain complete control and necessary "road feel" at all times. There is a perfect combination that will give you the most relaxing driving you've ever known. Drive Pontiac and see!





# Specifications

**Strato-Streak V-8 Engine** is a 90° V-block eight-cylinder engine of the valve-in-head design. With the standard compression ratio of 8.9 to 1, maximum brake horsepower is 227 at 4800 rpm, maximum torque, 312 lb.-ft. at 3000 rpm on Star Chief models with Hydra-Matic transmission; 205 horsepower at 4600 rpm, maximum torque, 294 at 2600 rpm on 860 & 870 models with Hydra-Matic transmission. Bore and stroke, 3.94 inches by 3.25 inches. Displacement, 316.6 cubic inches. Completely counterbalanced crankshaft with counterweights ideally distributed for uniform bearing loads. Five overlapping main bearings. Oil seals both front and rear. Tin-plated aluminum pistons to reduce scuffing and wear. Integral, tapered valve guides for ideal non-stick operation and valve seating. Chain-driven camshaft supported by five bushings. Rubber engine cushioning. Pressure-suction Crankcase Ventilation to ventilate the entire engine with a complete, ideal-flow, ventilating pattern. A low-compression engine is available for use with standard fuel as optional equipment with Synchromesh transmission.

**Engine Lubrication:** Full-pressure Quad-gallery Lubricating System for adequate bearing lubrication at all times, ample lubrication to all engine moving parts. Helical gear type oil pump. Oil refill capacity (less filter), five quarts. Full-flow oil filter, accessory.

**Fuel System:** Four-barrel, multiple-venturi, downdraft carburetor on Star Chief models; dual type standard (4-barrel carb. optional at

extra cost) on 870 and 860 models. Fuel pump with vacuum booster except on cars with accessory electric windshield wiper. Heavy-duty oil-bath air cleaner and silencer, accessory. Balanced-intake manifold with pre-heat chamber for extra-quick warm-up, efficient use of fuel. Automatic choke. Twenty-gallon fuel tank, except station wagons. 16- and 17-gallon fuel tanks in station wagons.

**Cooling System:** Reverse-flow Gusher-valve Cooling. Water distributing tubes in cylinder heads. Centrifugal water pump. Thermostatic control of water circulation. Water around all cylinders. Full-length water jackets. Four-bladed fan of 19-inch diameter, except in cars equipped with Air Conditioning. Coolant capacity: 22.7 quarts without heater; with underseat heater, 24.3 quarts; with Strato-Flight Hydra-Matic and underseat heater, 24.9 quarts.

**Electrical System:** 12-volt, 9-plate battery. Twenty-five ampere generator standard. Current and voltage regulator. Centrifugal, vacuumatic spark control. Spark plug make and model: AC 44. Key-quick Automatic Starting.

**Chassis:** Rugged Tru-X Frame with four-way centilever construction. Wheelbase: Star Chief—124 inches; Safari—122 inches; 870 and 860—122 inches. Independent front coil springs. Vertical kingpins. Front stabilizer bar. Hydraulic shock absorbers, front and rear. Long, leaf type, parallel rear springs with full-length liners and rubber bushings.

Recirculating ball steering gear. Over-all steering ratio: 25 to 1. Hotchkiss Power-cushion Drive, Hypoid rear axle. Multiple-sealed 12-inch front brakes; 11-inch rear brakes. Independent Easy-pull Hand Brake operates on rear wheels. Synchromesh transmission with easy-action clutch, quiet helical gears. Built-in concentric gearshift. Hydra-Matic Drive optional at extra cost. Extra-low-pressure tubeless tires standard, 7.10 by 15 for wide 5½-inch rims; 7.60 by 15 tires standard on station wagons.

**Body:** All-steel Body by Fisher. Key-operated outside front door locks. "Free-wheeling" door handles on all rear doors when locked. Crank-operated front Ventipanes. Counterbalanced, self-locking trunk lid. Counterbalanced hood. Automatic interior lighting, actuated by front doors on 870 and 860 models and by all doors on Star Chief models. Ash trays and arm rests both front and rear (no rear arm rests in station wagons, except Safari). Spring-held tools in trunk to prevent rattling, except station wagons.

**Dimensions:** Over-all length: Star Chief—212.6 inches; 870 and 860—205.6 inches, except station wagons: 860 and 870 Station Wagons, 206 inches; Safari—206.7 inches. Width: 75.1 inches. Height, with passengers: Four-door and Two-door Sedans, 60.5 inches; Convertible Coupe, 59 inches; Two-door Catalina, 59.1 inches; Four-door Catalina, 59 inches; 860 and 870 Station Wagons, 61 inches; Safari, 59.6 inches.



Pontiac Motor Division of General Motors Corporation reserves the right to make changes at any time, without notice, in colors, materials, equipment, specifications, prices and models—and also to discontinue models. The right is also reserved to change any specifications, parts or equipment at any time without incurring any obligation to equip same on cars built prior to date of such change. White sidewall tires and rear fender panels shown on car illustrations are not standard equipment and are available at extra cost.