



1979 PONTIAC BUYER'S GUIDE



1979 PONTIAC BUYER'S GUIDE

This 1979 Pontiac Buyer's Guide lists the major standard and available optional equipment for all 1979 Pontiac models. Be sure to pick up your copy of the 1979 Pontiac Catalog for full-color illustrations and descriptions of some of these models and equipment. See your Pontiac Dealer for additional information on colors, interiors and equipment, plus information on buying or leasing your 1979 Pontiac.

We have tried to make this catalog as comprehensive and factual as possible. And we hope you find it helpful. However, since the time of printing, some of the information you'll find here may have been updated. Your dealer has details and, before ordering, you should ask him to bring you up to date.

A WORD ABOUT ASSEMBLY, COMPONENTS AND OPTIONAL EQUIPMENT IN THESE PONTIACS

The Pontiac products described in this brochure are assembled at facilities of General Motors Corporation operated by Pontiac, GM Assembly Division or GM of Canada. These vehicles incorporate thousands of different components produced by various divisions of General Motors and by various suppliers to General Motors. From time to time during the manufacturing process, it may be necessary, in order to meet public demand for particular vehicles or equipment, or to meet federally mandated emissions, safety and fuel economy requirements, or for other reasons, to produce Pontiac products with different components or differently sourced components than initially scheduled. All such components have been approved for use in Pontiac products and will provide the quality performance associated with the Pontiac name.

With respect to extra cost optional equipment, make certain you specify the type of equipment you desire on your vehicle when ordering it from your dealer. Some options may be unavailable when your car is built. Your dealer receives advice regarding current availability of options. You may ask the dealer for this information. GM also requests the dealer to advise you if an option you ordered is unavailable. We suggest you verify that your car includes the optional equipment you ordered or, if there are changes, that they are acceptable to you.

STANDARD FEATURES ALL 1979 PONTIACS

SAFETY FEATURES

Occupant Protection

- Seat Belts with Push-button Buckles for all Passenger Positions
- Two Front Combination Seat and Inertia Reel Shoulder Belts for Driver (with Reminder Light and Buzzer) and Right Front Passenger
- Energy-absorbing Steering Column
- Passenger-guard Door Locks
- Safety Door Latches and Stamped Steel Hinges
- Folding Seatback Latches
- Energy-absorbing Padded Instrument Panel and Front Seatback Tops*
- Contoured Windshield Header
- Thick Laminated Windshield
- Safety Armrests
- Safety Steering Wheel

*Including intermediate seatback tops on three-seat station wagons.

Accident Avoidance

- Side Marker Lights and Reflectors
- Parking Lamps that Illuminate with Headlamps
- Four-way Hazard Warning Flasher
- Backup Lights
- Lane Change Feature in Direction Signal Control
- Windshield Defroster, Washer and Dual-speed Wipers
- Wide-view Inside Mirror (Vinyl-edged, Shatter-resistant Glass and Deflecting Support)
- Outside Rearview Mirror
- Dual Master Cylinder Brake System with Warning Light
- Starter Safety Switch
- Dual-action Safety Hood Latches (Front Opening Hoods)

Anti-Theft

- Anti-theft Ignition Key Reminder Buzzer
- Anti-theft Steering Column Lock

OTHER STANDARD FEATURES

- Body by Fisher
- Carburetor Air Preheater
- Full-foam Seats
- Full-flow Oil Filter
- Labeled Instrument Panel Control Switches
- Radio-interference-suppression Ignition
- Catalytic Converter
- High-energy Ignition
- Speedometer Graduated in Kilometres per Hour as well as Miles per Hour (odometer registers miles)
- Delco Freedom® Battery

INDEX

Grand Prix.....	3
Firebird.....	4
Bonneville/Catalina.....	5
LeMans/Grand LeMans.....	6
Grand Am.....	7
Sunbird.....	8
Phoenix.....	9
Wagons.....	10, 11
Wheels, Wheel Covers and Steering Wheels.....	11

A WORD ABOUT ENGINES: These Pontiacs are equipped with GM-built engines produced by various divisions. See your dealer for details.

MODELS

- Grand Prix
- Grand Prix LJ
- Grand Prix SJ

STANDARD EQUIPMENT**Grand Prix Exterior**

- New Grille and Grille Extensions in Bumper • Dual Rectangular Head Lamps • Stand-up Hood Ornament & Windsplit Molding • Formal Roof Line with Formal Rear Quarter Windows • Body-color Inserts in Outside Door Handles • Wide Rocker Panel Moldings • Wheel Opening Moldings • Front & Rear Bumper Strips • Deck Lid Lock Cover • Hubcaps with Pontiac Crest

In Addition to Grand Prix Exterior

- Features, Grand Prix SJ Includes: Custom Finned Wheel Covers • Wide Rocker Panel Moldings with Extensions • Outside Body-color Mirrors, LH Remote Controlled • SJ Identification • Accent Stripes

In Addition to Grand Prix Exterior

- Features, Grand Prix LJ Includes: Deluxe Wheel Covers • Wide Rocker Panel Moldings with Extensions • LJ Exterior Identification • Outside Body-color Mirrors, LH Remote Controlled

Grand Prix Interior

- Deluxe Cushion Steering Wheel • Column-mounted Dimmer Switch • Simulated Regal Walnut Instrument Panel Trim Plate • Notchback Seat with Center Armrest in Cloth & Vinyl or All-Vinyl • Electric Clock • Nylon-blend, Cut-pile Carpeting • Carpeted Lower Door Panels • Door Pull Straps • Inside Hood Release • Luggage Compartment Mat

In Addition to Grand Prix Interior

- Features, Grand Prix SJ Includes: Custom Stitched-appearance Instrument Panel Pad • Brushed-aluminum Instrument Panel Trim Plate • Rally Gages & Trip Odometer • Custom Sport Steering Wheel • Specific Vinyl Front Bucket Seats • Console • "Viscount" Bucket Seats Available (Leather with Vinyl Bolsters) • Custom Pedal Trim Plates • Custom Color-keyed Seat & Shoulder Belts • Added Acoustical Insulation • SJ Identification

In Addition to Grand Prix Interior

- Features, Grand Prix LJ Includes: Custom Stitched-appearance Instrument Panel Pad • Custom Seats with Loose-pillow-look Design in Velour • "Viscount" Bucket Seats Available (Leather with Vinyl Bolsters) • Luxury Carpet • Rear Quarter Courtesy Lamps • LJ Identification • Added Acoustical Insulation • Custom Pedal Trim Plates • Custom Color-keyed Seat & Shoulder Belts • Luxury Cushion Steering Wheel

CHASSIS FEATURES

- High-energy Electronic Ignition • Catalytic Converter • Delco Freedom® Battery • Radial Tuned Suspension with Radial Tires and Computer-selected Front and Rear Coil Springs

Standard Tires

- 195/75R14 Black Steel belt

Available Tires

- 205/75R14 White Steel Belt (NA SJ) • 205/70R14 Black Steel Belt • 205/70R14 White Steel

FACTS & FIGURES

GRAND PRIX

POWERTRAINS

Engine*	[Order Code]	Certi-fication(1)	Trans-mission	Gearshift Location	Axle Ratios		
					Std.	Avail.	V8††
Grand Prix & Grand Prix LJ							
**3.8 Litre (231 CID)		F	**Man. 3-Speed	Floor	2.93	NA	NA
2-bbl V-6 [L05]*B			Automatic	Col/Floor	2.41	2.73	NA
***4.9 Litre (301 CID)		F	***Automatic	Col/Floor	2.14/2.29††	NA	NA
2-3M V-8 [L27]*A							
4.9 Litre (301 CID)		F	Man. 4-Speed	Floor	2.73	NA	NA
4-3M V-8 [L37]*A			Automatic	Col/Floor	2.29	2.56	2.56
15.0 Litre (305 CID)		A	Automatic	Col/Floor	2.73	NA	2.73
4-3M V-8 [L64]*C							
3.8 Litre (231 CID)		C	Automatic	Col/Floor	2.73	NA	NA
2-bbl V-6 [L05]*B							
5.0 Litre (305 CID)		C	Automatic	Col/Floor	2.28	2.73	2.73
4-3M V-8 [L64]*C							
Grand Prix SJ							
**4.9 Litre (301 CID)		F	Man. 4-Speed	Floor	2.73	NA	NA
4-bbl V-8 [L37]*A			**Automatic	Floor	2.29	2.56	2.56
15.0 Litre (305 CID)		A	Automatic	Floor	2.73	NA	2.73
4-3M V-8 [L64]*C							
5.0 Litre (305 CID)		C	Automatic	Floor	2.29	2.73	2.73
4-bbl V-8 [L64]*C							

*Pontiac are equipped with GM-built engines produced by the following Divisions: A—Pontiac B—Buick C—Chevrolet.

Base Powertrain. *Base Powertrain for LJ: 3.8 Litre V-6 w/auto trans. avail on LJ (With Air/Emissions (UPC NA6))—designed and recommended for high altitude operation.

†Trailer-towing package. ††Manufacturer's option.

(1) F—Federal; A—Altitude; C—California.

Belt 1 • 205/70R14 White Letter Steel Belt 1

Includes RALLY R/S Suspension w/d: Larger front stabilizer bar, Rear stabilizer bar, Specifically tuned suspension components

Standard Steering • Manual, Ball-race Gear; Power Steering Std. on Grand Prix SJ, LJ

Standard Brakes • Manual, Front Disc, Rear

Drum; Power Std. on Grand Prix SJ, LJ

POPULAR EQUIPMENT AVAILABLE

- Air Conditioning, Custom
- Air Conditioning, Automatic Climate Control • Clock,

DIMENSIONS

	Min. (in.)
Overall length	5117 (201.4)
Overall width	1848 (72.7)
Wheelbase	2745 (108.1)
Tread, front/rear	1486/1467 (58.5/57.8)
Head room, front/rear	956/961 (37.6/37.8)
Leg room, front/rear	1086/923 (42.8/36.3)
Shoulder room, front/rear	1414/1419 (55.7/55.9)
Hip room, front/rear	1311/1394 (51.5/54.9)
Trunk Capacity	457 Lites (10.1 cu. ft.)

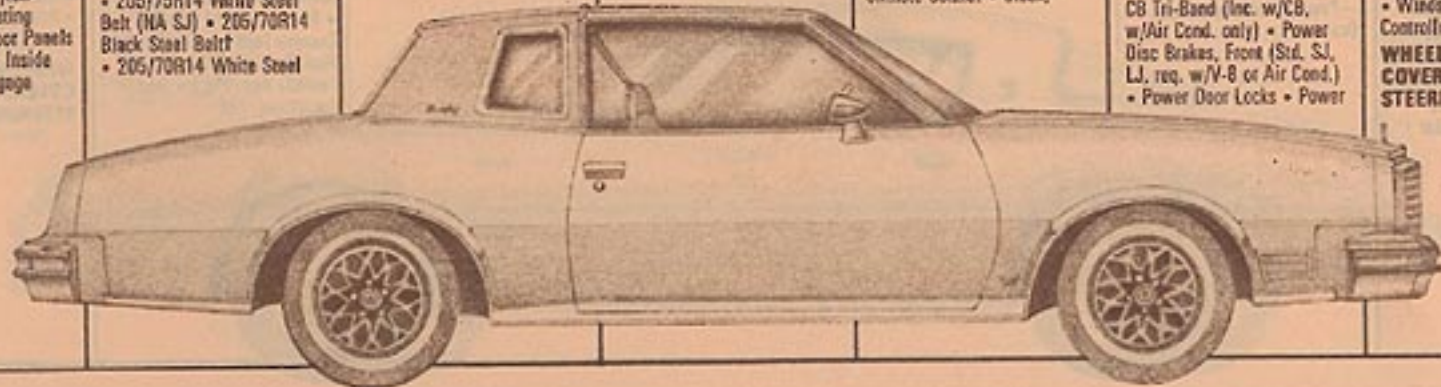
Published dimensions are for a base automobile without optional equipment or accessories. Additional accessories or equipment ordered at the customer's option can result in a minor change in these dimensions.

Digital (Req. Lamp Group & Air Cond.) • Cruise Control (w/Auto. Trans. & Power Brakes only) • Deck Lid Release, Remote Control • Defroster, Electric Rear Window • Gages, Rally & Trip Odometer (Std. SJ, req. V-8) • Gages, Rally & I/P Tach (Requires Digital Clock & V-8) • Glass, All Windows Soft Ray • Hatch Roof, Removable • Lamp Group req. w/Console or Digital Clock • Lamp, Dome-Reading (NA w/Hatch Roof) • Litter Container • Luggage Compartment Trim • Mirror, Illuminated Visor RH • Mirrors, LH Remote Control Sport, RH Man. Adj. (Std. SJ, LJ) • Mirrors, LH & RH Remote Control Sport • Power Antenna (w/Air Cond. only) • Power Antenna, AM/FM-CB Tri-Band (inc. w/CB, w/Air Cond. only) • Power Disc Brakes, Front (Std. SJ, LJ, req. w/V-8 or Air Cond.) • Power Door Locks • Power

Seat, Driver, 6-Way • Power Steering (Std. SJ, LJ, req. w/Air Cond. or V-8) • Power Windows • Radio, AM/FM Stereo • Radio, AM & Stereo 8-track Tape Player • Radio, AM/FM Stereo & Stereo 8-track Tape Player • Radio, AM/FM Stereo & Stereo Cassette Tape Player • Radio, AM/FM Stereo w/Digital Clock • Radio, AM/FM w/40-Channel CB • Seat, Reclining Passenger (Notchback, 60/40 and Bucket Seats only) • Shock Absorbers, Automatic Level Control • Shock Absorbers, Superlift • Steering Wheel, Tilt (w/Auto. Trans. only, NA Deluxe Cushion Steering Wheel) • Sunroof, Power Glass • Sunroof, Power Metal (Sunroof Reduces Headroom) • Trailer Group, Medium • Windshield Wipers, Controlled Cycle

WHEELS, WHEEL COVERS AND STEERING WHEELS

See page 11



MODELS

- Firebird
- Firebird Esprit
- Firebird Formula
- Firebird Trans Am

STANDARD EQUIPMENT

- Firebird Exterior**
- New Grille Styling • New One-piece Resilient Endura Front End Panel and Front and Rear Bumpers • Dual Horns • Concealed Windshield Wipers • Quad Rectangular Headlamps • Hubcaps w/Crest

- In Addition to Firebird Exterior Features, Esprit Includes:** Body-color Inserts in Outside Door Handles • New Deluxe Wheel Covers • Sport Mirrors, LH Remote, RH Man. • Bright Windowsill & Hood Rear Edge Molding • Wheel Opening Moldings • Roof Drip Moldings

- In Addition to Firebird Exterior Features, Formula Includes:** Lower Body Accent Color • Simulated Dual Scoop Hood Design • Sport Mirrors, LH Remote, RH Man. • Rally II Wheels with Trim Rings

- In Addition to Firebird Exterior Features, Trans Am Includes:** Front Center Air Dam • Rear Deck Spoiler • Sport Mirrors, LH Remote, RH Man. • Front & Rear Wheel Opening Air Deflectors • Front Fender Air Extractors • Side-splitter Tailpipes • Rally II Wheels with Trim Rings • Shaker Hood & Air Cleaner

- Firebird Interior**
- Fully Upholstered Door Trim Panels • Deluxe Cushion Steering Wheel • Nylon-bleed, Cut-pile Carpeting • Simulated Rosewood Applique on Instrument Panel Trim Plate • Front Bucket

Seats in All-ways • New Steering Column-mounted Dimmer Switch • Floor-mounted Shifter • Luggage Compartment mat

- In Addition to Firebird Interior Features Esprit Includes:** Luxury Cushion Steering Wheel • Added Acoustic Insulation • Custom Interior Trim Includes: • All-ways or Extra Cost Hebnail Cloth Bucket Seats • Rear Quarter Ash Trays • Instrument Panel Assist Strap • Custom Pedal Trim Plates

- In Addition to Firebird Interior Features Formula and Trans Am Includes:** Formula Steering Wheel • Rally Gages with Clock (Instrument Panel Tachometer on Trans Am) • Engine-tuned Instrument Panel Trim Plate • Console

- CHASSIS FEATURES**
- Radial Tuned Suspension on Firebird, Esprit
 - Rally RTS Suspension on Formula, Trans Am

- Standard Tires**
- Firebird, Esprit—FR78-15 Black Steel-belted Radials
 - Formula, Trans Am—225/70R15 Black Steel-belted Radials

- Available Tires**
- Firebird & Esprit—FR78-15 White or White Lettered*
 - Formula & Trans Am—225/70R15 White Lettered*

- Standard Steering**
- Power
- Standard Brakes**
- Manual, Front Disc, Rear Drum • Trans Am & Formula—Power, Front Disc, Rear Drum

FACTS & FIGURES

FIREBIRD

POWERTRAINS

Engine*	[Order Code]	Certi-fication(1)	Transmission (Floor shift)	Axle Ratios	
				Std.	Avail.
Firebird, Esprit					
**3.8 litre (231 CID) 2-bbl V-8 [L05]*B	F	F	**Man. 3-Spd. Automatic	3.08	NA
4.9 litre (301 CID) 2-bbl V-8 [L27]*A	F	F	Automatic	2.58	3.23
4.9 litre (301 CID) 4-bbl V-8 [L37]*A	F	F	Automatic	2.41	NA
4.9 litre (301 CID) 4-bbl V-8 [L37]*A	F	F	Man. 4-Spd. Automatic	3.08	NA
4.9 litre (301 CID) 4-bbl V-8 [L37]*A	F	F	Automatic	2.73	NA
15.7 litre (350 CID) 4-bbl V-8 [LM1]*C	A	A	Automatic	3.68	NA
3.8 litre (231 CID) 2-bbl V-8 [L05]*B	C	C	Automatic	2.56	NA
5.0 litre (305 CID) 2-bbl V-8 [L03]*C	C	C	Automatic	2.41	NA
Formula					
**4.9 litre (301 CID) 2-bbl V-8 [L27]*A	F	F	**Automatic	2.41	NA
4.9 litre (301 CID) 4-bbl V-8 [L37]*A	F	F	Man. 4-Spd. Automatic	3.08	NA
4.9 litre (301 CID) 4-bbl V-8 [L37]*A	F	F	Automatic	2.73	NA
T/A 6.6 litre (400 CID) 4-bbl V-8 [L78]*A	F	F & C	Man. 4-Spd. Automatic	3.23	NA
6.6 litre (400 CID) 4-bbl V-8 [L80]*D	F & C	F & C	Automatic	2.41	3.23†
15.7 litre (350 CID) 4-bbl V-8 [LM1]*C	A	A	Automatic	3.68	NA
†6.6 litre (400 CID) 4-bbl V-8 [L80]*D	A	A	Automatic	3.08(2)	3.23†(2)
5.0 litre (305 CID) 2-bbl V-8 [L03]*C	C	C	Automatic	2.41	NA
Trans Am					
4.9 litre (301 CID) 4-bbl V-8 [L37]*A	F	F	Man. 4-Spd. Automatic	3.08	NA
4.9 litre (301 CID) 4-bbl V-8 [L37]*A	F	F	Automatic	2.73	NA
T/A 6.6 litre (400 CID) 4-bbl V-8 [L78]*A	F	F	Man. 4-Spd. Automatic	3.23	NA
**6.6 litre (400 CID) 4-bbl V-8 [L80]*D	F & C	F & C	**Automatic	2.41	3.23†
†6.6 litre (400 CID) 4-bbl V-8 [L80]*D	A	A	Automatic	3.08	3.23†

*Pontiac are equipped with GM-built engines produced by the following Divisions: A—Pontiac B—Buick C—Chevrolet D—Oldsmobile.

**Base Powertrain.

†With Altitude Emission (UPC NA6)—designed and recommended for high altitude operation.

‡Requires WS6 Performance Package. (1) F—Federal; A—Altitude; C—California.

(2) A/C only

DIMENSIONS

	Mm. (in.)
Overall length	5832 (189.1)
Overall width	1854 (73.0)
Wheelbase	2748 (109.2)
Tread, front/rear	1557/1524 (61.3/60.0)
Head room, front/rear	945/914 (37.2/36.0)
Leg room, front/rear	1115/721 (43.9/28.4)
Shoulder room, front/rear	1440/1362 (56.7/54.4)
Hip room, front/rear	1331/1176 (52.4/46.3)
Trunk Capacity	201 litres (7.1 cu. ft.)

Published dimensions are for a base automobile without optional equipment or accessories. Additional accessories or equipment ordered at the customer's option can result in a minor change in these dimensions.

POPULAR EQUIPMENT AVAILABLE

- Air Conditioning, Custom Console (Std. Formula, Trans Am; Req. w/Auto Trans.)
- Cruise Control (w/Auto Trans. only) • Deck Lid Release, Remote Control
- Defraster, Electric Rear Window • Gages, Rally & Clock (Std. Formula; w/V-8 only) • Gages, Rally, Clock & 1/P Tack (Std. Trans Am; w/V-8 only) • Hatch Roof, Removable (N/A w/Vinyl Top)
- Hood Decal (Trans Am Only) • Lamp, Dome Reading
- Power Disc Brakes, Front (Std. Formula, Trans Am; Req. w/V-8 or V-8 w/Air Cond.)
- Power Brakes, Front and Rear Disc (Formula, Trans Am only) • Power Door Locks
- Power Windows (w/Console only) • Radio, AM/FM Stereo • Radio, AM/FM Stereo & Stereo 8-track Tape Player • Radio, AM/FM Stereo & Stereo Clock (NA w/Rally Gages)
- Radio, AM/FM w/MO-Channel CB • Radio, AM/FM Stereo w/MO-Channel CB • Radio, AM/FM Stereo w/40-Channel CB • Radio, AM/FM Stereo & Cassette Tape Player • Spoiler, Rear Deck (Std. Trans Am & Formula App. Pkg.) • Steering Wheel, Tilt

WS6 Appearance Package, Esprit (Redbird) Includes:

- Special Two-tone Red exterior • Special Gold Stripping and Decals • Red Formula Steering Wheel • Red Cast-aluminum Wheels • Gold-accented Engine-tuned Instrument Panel Trim Plate and Front Grille Liners • Custom Seat Belts

WS0 Formula Appearance Package Includes:

- Rear Deck Spoiler • "Formula" Lettering on Lower Door and Rear Deck Spoiler

Y84 Special Edition Trans Am Includes:

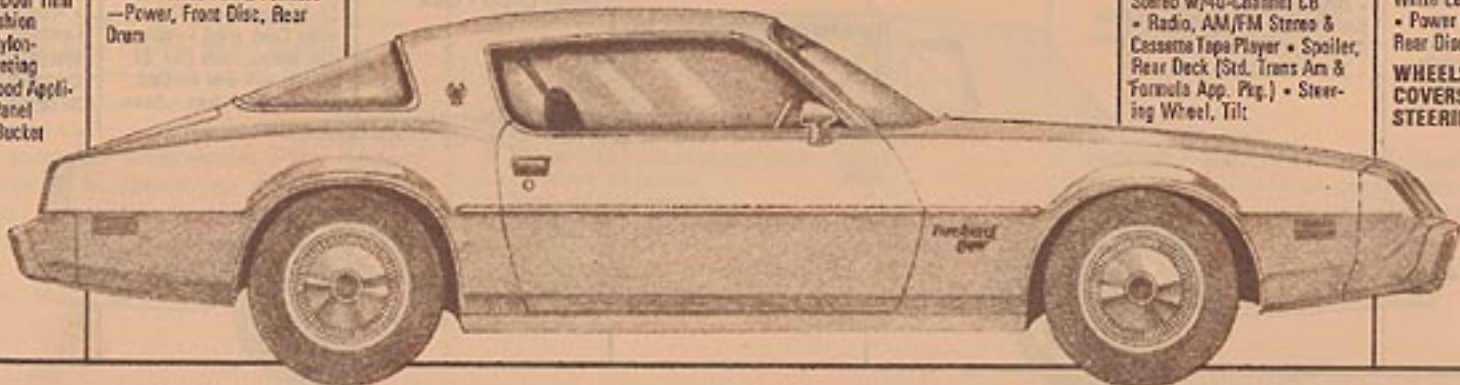
- Black Exterior with Gold Stripping and Decals • Removable Hatch Roof (a delete option) • Hood Decal • Gold Cast-aluminum Wheels

WS6 Special Performance Package Includes:

- Cast-aluminum Wheels (8" wide) • Special Handling Package • 225/70R15 Steel-belted White Lettered Radial Tires • Power Brakes, Front and Rear Disc

WHEELS, WHEEL COVERS AND STEERING WHEELS

See page 11



MODELS

- Catalina Coupe
- Catalina Sedan
- Bonneville Coupe
- Bonneville Sedan
- Bonneville Brougham Coupe
- Bonneville Brougham Sedan

STANDARD EQUIPMENT**Catalina Exterior**

- New Grille Styling • Hood Woodgrain Molding • Stand-up Tail Lamp Styling • Energy-absorbing Front & Rear Bumpers • Front & Rear Bumper Rub Strips • Hubcaps with Pontiac Crest

In Addition to**Catalina Exterior****Features, Bonneville**

- Includes: Distinctive Bonneville Grille Styling • New Tail Lamp Styling • Body-color Inserts in Outside Door Handles • Sunburst Medallion on Center Pillar (Coupe) • Sunburst Medallion on Roof Sail Area (Sedan) • New Deluxe Wheel Covers • Rear Wheel Opening Covers (Skirts)

In Addition to**Catalina Exterior****Features, Bonneville**

- Brougham Includes: Distinctive Bonneville Grille Styling • New Tail Lamp Styling • Brougham Identification • Sunburst Medallion on Center Pillar (Coupe) • Sunburst Medallion on Roof Sail Area (Sedan) • New Deluxe Wheel Covers • Rear Wheel Opening Covers (Skirts) • Chrome LH Remote Controlled Rearview Mirror • Windowill Moldings

Catalina Interior

- Cloth Seats Trimmed in Vinyl • Fully Upholstered Door Panels • Simulated Walnut Applique on Instrument Panel Trim Plates • Deluxe Cushion Steering Wheel • Inertia-type Automatic Seatback Lock

- on Coupes • Column-mounted Dimmer Switch • Ash Tray Lamp • Glove Compartment Lamp • Cigar Lighter • Inside Hood Latch Release • Nylon-bleed, Cut-pile Carpeting • Luggage Compartment Mat

In Addition to**Catalina Interior****Features, Bonneville**

- Includes: Cloth & Vinyl or All-vinyl Interior Trim • Notchback Front Seat with Fold-down Center Armrest • Pull Straps on All Doors • Luxury Door Trim with Carpeted Lower Area • Dome Lamp Switches on All Doors • Added Acoustical Insulation

In Addition to**Catalina Interior****Features, Bonneville****Brougham Includes:**

- Specific Bonneville Brougham Trim with Loose-cushion Loak Luxury Velour Seats • 60/40 Notchback Front Seat with Fold-down Center Armrest • Luxury Cushion Steering Wheel • Electric Clock • Power Windows • Carpeted Lower Door Panels • Custom Pedal Trim Plates • Luggage Compartment Lamp • Dome Lamp Switches on All Doors • Custom Seat & Shoulder Belts • Bonneville Brougham Identification • Luggage Compartment Fully Trimmed with Velour on Floor & Spare Tire Cover • RH Visor Vanity Mirror • Added Acoustical Insulation

CHASSIS FEATURES

- High-energy Ignition System • Catalytic Converter • Delco Freedom® Battery • Radial Tuned Suspension w/Radial Tires

Standard Tires

- FR78-15 Black Fiberglass-belted (Catalina w/V-6 only)
- FR78-15 Black*

FACTS & FIGURES

BONNEVILLE/CATALINA

POWERTRAINS

Engine*	[Order Code]	Certi-fication(1)	Trans-mission	Axle Ratios			
				Std.	Avail.	V81‡	V81‡
Catalina							
*3.8 Liter (231 CID)		F	Automatic	2.73	3.23	NA	NA
2-bbl V-6 [L05]*B							
3.8 Liter (231 CID)		C	Automatic	2.73	NA	NA	NA
2-bbl V-6 [L05]*B							
Catalina/Bonneville/Bonneville Brougham							
**4.9 Liter (301 CID)		F	Automatic(2)	2.28	2.41	2.41	NA
2-bbl V-8 [L27]*A							
4.9 Liter (301 CID)		F	Automatic(2)	2.41	NA	2.41	NA
4-bbl V-8 [L37]*A							
5.7 Liter (350 CID)		F	Automatic(2)	2.41	2.73	2.41/2.73	3.08
4-bbl V-8 [L77]*B							
15.7 Liter (350 CID)		A	Automatic(2)	2.41	NA	2.41	NA
4-bbl V-6 [L34]*D							
5.7 Liter (350 CID)		C	Automatic(2)	2.41	NA	2.41	NA
4-bbl V-6 [L34]*D							

*Pontiacs are equipped with GM-built engines produced by the following Divisions: A—Pontiac B—Buick C—Chevrolet D—Oldsmobile.

Base Powertrain—Catalina. *Base Powertrain—Bonneville/Brougham. †With High Altitude Emissions (UPC NA6)—designed and recommended for high altitude operation.

‡Trailer-towing packages.

(1) F—Federal; A—Altitude; C—California.

(2) Floor-mounted shift with bucket seats on Bonneville only.

Bonneville/Brougham**Available Tires**

- FR78-15 White Fiberglass radial (Catalina w/V-6 only)
- FR78-15 White* • GR78-15 Black* • GR78-15 White* • HR78-15 Black* • HR78-15 White* • HR78-

15 Wide White* • GR78-15 White*†

*Steel-belted Radials
†Includes RALLY RTS Suspension with Larger front stabilizer bar, Rear stabilizer bar. Specifically used suspension components

Standard Steering

- Power

Standard Brakes

- Power, Front Disc, Rear

POPULAR EQUIPMENT AVAILABLE

- Air Conditioning, Custom
- Air Conditioning, Automatic Climate Control • Belts, Custom Color-keyed (Std.)

DIMENSIONS

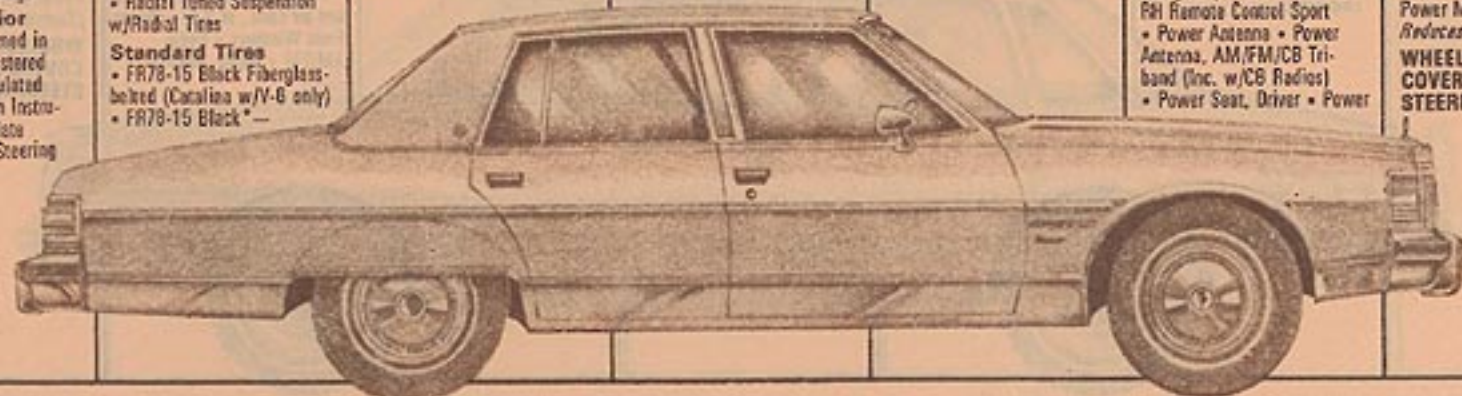
	Coupe In. (in.)	Sedan In. (in.)
Overall length	5443 (214.3)	5443 (214.3)
Overall width	1940 (76.4)	1940 (76.4)
Wheelbase	2945 (116.0)	2945 (116.0)
Tread, front/rear	1568/1542 (61.7/60.7)	1568/1542 (61.7/60.7)
Head room, front/rear	965/971 (38.8/38.2)	1002/970 (39.4/38.2)
Leg room, front/rear	1078/967 (42.4/38.1)	1078/991 (42.4/39.0)
Shoulder room, front/rear	1544/1494 (60.8/59.6)	1544/1545 (60.8/60.8)
Hip room, front/rear	1399/1452 (55.0/57.6)	1399/1495 (55.0/59.3)
Trunk Capacity	575 litres (20.3 cu. ft.)	

Published dimensions are for a base automobile without optional equipment or accessories. Additional accessories or equipment ordered at the customer's option can result in a minor change in these dimensions.

- Brougham) • Bumper Guards, Front • Bumper Guards, Rear • Clock, Digital (w/Air Cond. only) • Cruise Control • Defroster, Electric Rear Window • Firm Ride Pkg. • Gages, Rally, Trip Odometer & Fuel Economy Ind. (V-8 only—NA w/Clock • Gages, Rally & Clock (V-8 only) • Insulation, Additional Acoustical (Std. Bonneville) • Lamp Group • Lamp, Dome Reading • Lamp, Door Courtesy (NA Catalina) • Lamps, Conering • Luggage Compartment Trim (Std. Brougham) • Mirror, Illuminated Visor RH • Mirrors, LH Remote Control Sport, RH Man. Adj. • Mirror, LH Remote Control Chrome (Std. Brougham) • Mirrors, LH & RH Remote Control Sport • Power Antenna • Power Antenna, AM/FM/CB Tri-band (Inc. w/CB Radios) • Power Seat, Driver • Power

- 60/40 Seat, Driver & Passenger (NA Catalina) • Power Windows (Std. Brougham) • Power Door Locks • Radio AM & Stereo 8-track Tape Player • Radio, AM/FM Stereo & Stereo 8-track Tape Player • Radio, AM/FM Stereo & Stereo Cassette Tape Player • Radio, AM/FM Stereo w/Digital Clock (NA w/Clocks or Rally gages) • Radio, AM/FM w/40-Channel CB • Radio, AM/FM Stereo w/40-Channel CB (w/Air Cond. only) • Seat, Reclining Passenger (w/60/40, Notchback or Bucket Seats only) • Steering Wheel, Tilt (w/Luxury Dashion or Custom Sport Wheels only) • Sunroof, Power Glass • Sunroof, Power Metal (Sunroof Reduces Heatload) • WHEELS, WHEEL COVERS AND STEERING WHEELS

See page 11



MODELS

- LeMans Coupe
- LeMans Sedan
- Grand LeMans Coupe
- Grand LeMans Sedan

STANDARD EQUIPMENT**LeMans Exterior**

- New Grille and Park and Signal Lamps • Pontiac Crest and Nameplate on Front End Panel • Single Rectangular Head Lamps • "LeMans" Nameplate on Front Fenders • New Wide, Wraparound Tail Lamps • Deck Lid Lock Cover with Crest • Concealed Windshield Wipers • Wheel Opening Moldings • Roof Spoiler Moldings • Resilient, Energy-absorbing Front & Rear Bumpers • Body-color Bumpers with Bright Rub Strips • Hubcaps with Pontiac Crest

In Addition to LeMans Exterior Features, Grand LeMans Includes:

- Grand LeMans Identification on Front Fenders • Grand LeMans Hood Ornament • Hood Windsplit Molding • Peripheral-type Body Lower Side Molding • Bright Tail Lamp Bezels • Body-color Inserts in Outside Door Handles • Side Window Reveal Moldings and Center Pillar Applique on Sedan • Black Rocker Molding • Dual Hems

LeMans Interior

- Full-Width Seats in New Dover II Cloth and Vinyl • Fully Upholstered Door Panels • Deluxe Cushion Steering Wheel • Column-mounted Dimmer Switch • Simulated Regal Walnut Applique on Instrument Panel Trim Plate • Tilt-type Inside Non-glare Mirror • Inside Hood Latch Release • Nylon-blend, Cut-pile Carpeting

- Inertia-type Automatic Seat-back Lock on Coupes • Luggage Compartment Mat • Bin-type Glove Compartment with coin holder • Cigar Lighter

In Addition to LeMans Interior Features, Grand LeMans Includes:

- New Cloth and Vinyl or All-vinyl Seats with Front Center Armrest (Loose-pillow Design Notchback Cloth Seats Available • Cloth or Vinyl Bucket Seats Available) • Door Panel Pull Straps • Luxury Cushion Steering Wheel • Carpeted Lower Door Panels • Dome Lamp Switches on All Doors

CHASSIS FEATURES:

- High-energy Ignition System • Catalytic Converter • Delco Freedom® Battery • Radial Toned Suspension with Radial Tires and Computer-selected Front and Rear Coil Springs • Front Stabilizer Bar

Standard Tires

- 185/75R14 Black Fiberglass Radial Tires

Available Tires

- 185/75R14 White Fiberglass Belt (w/V-8 only)
- 195/75R14 Black Fiberglass Belt • 185/75R14 White Fiberglass Belt • 185/75R14 White Steel Belt • 205/75R14 White Steel Belt • 205/70R14 Black Steel Belt†
- 205/70R14 White Letter Steel Belt† • 205/70R14 White Steel Belt†

†Includes RALLY RTS Suspension Package with: Larger front stabilizer bar, Rear stabilizer bar, Specifically tuned suspension components

FACTS & FIGURES

LEMANS

POWERTRAINS

Engine*	[Order Code]	Certi-fication(1)	Trans-mission	Gearshift Location	Axle Ratios		
					Std.	Avail.	V82†
**3.8 Liter (231 CID) 2-bbl V-6 [L05]*B		F	**Man. 3-Speed Man. 4-Speed	Floor	2.93	NA	NA
			Automatic	Col/Floor	2.41	2.73	NA
4.9 Liter (301 CID) 2-bbl V-8 [L27]*A		F	Automatic	Col/Floor	2.14/2.29††	NA	NA
4.9 Liter (301 CID) 4-bbl V-6 [L37]*A		F	Man. 4-Speed Automatic	Floor Col/Floor	2.73	NA	NA
			Automatic	Col/Floor	2.29	2.56	2.56
15.0 Liter (305 CID) 4-bbl V-8 [L64]*C		A	Automatic	Col/Floor	2.73	NA	2.73
3.8 Liter (231 CID) 2-bbl V-6 [L05]*B		C	Automatic	Col/Floor	2.73	NA	NA
5.0 Liter (305 CID) 4-bbl V-8 [L64]*C		C	Automatic	Col/Floor	2.29	2.73	2.73

*Pontiacs are equipped with GM-built engines produced by the following Divisions: A—Pontiac B—Buick C—Chevrolet.

††Base powertrain. ††Manufacturer's option. †With Altitude Emission (UPC NAB)—designed and recommended for high altitude operation.

‡Trailer-towing package.

(1) F—Federal; A—Altitude; C—California.

Standard Steering

- Manual, Ball-race gear

Standard Brakes

- Manual Front Disc, Rear Drum

POPULAR EQUIPMENT AVAILABLE

- Air Conditioning, Custom

- Air Conditioning, Automatic Climate Control • Bumper Guards, Front • Bumper Guards, Rear • Clock, Digital (w/lamp group & air cond. only) • Clock, Electric • Console (w/bucket seats & lamp group only) • Cruise Control (w/auto. trans. & power brakes only) • Deck

Lid Release, Remote Control

- Defroster, Electric Rear Window • Gages, Instrument Panel (inc. trip odo.—does not inc. clock—NA V-6) • Gages, Rally & I/P Tach (inc. trip odo.—does not inc. clock—NA V-8 or w/Clock) • Glass, All Windows Soft Ray • Horns, Dual (Std., Grand

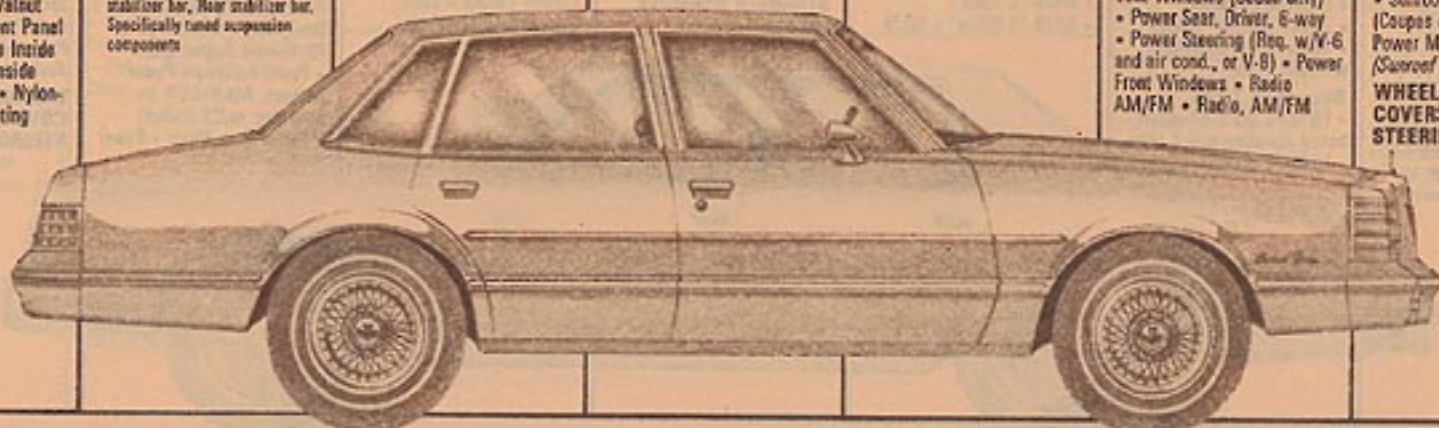
DIMENSIONS

	Coupe	Sedan
	Mm. (in.)	Mm. (in.)
Overall length	6041 (198.6)	6041 (198.6)
Overall width	1838 (72.4)	1838 (72.4)
Wheelbase	2746 (108.1)	2745 (108.1)
Tread, front/rear	1486/1467 (58.5/57.8)	1486/1467 (58.5/57.8)
Head room, front/rear	952/951 (37.9/37.8)	953/957 (38.7/37.7)
Leg room, front/rear	1086/932 (42.8/35.1)	1086/965 (42.8/38.0)
Shoulder room, front/rear	1442/1411 (56.8/55.6)	1442/1450 (56.8/57.1)
Hip room, front/rear	1314/1384 (51.7/54.5)	1326/1412 (52.2/55.6)
Trunk capacity	469 Litres (16.6 cu. ft.)	

Published dimensions are for a base automobile without optional equipment or accessories. Additional accessories or equipment ordered at the customer's option can result in a minor change in these dimensions.

- LeMans) • Insulation, Additional Acoustical (Std., Grand LeMans) • Lamp Group • Lamp, Dome Reading • Luggage Compartment Trim • Mirror, Illuminated Visor RH • Mirrors, LH Remote Control Sport, RH Man. Adj. • Mirror, LH Remote Control Chrome (NA w/Specific Two Tone) • Mirrors, LH & RH Remote Control Sport • Mirror, Visor Vanity RH • Power Antenna (w/air cond. only) • Power Antenna, AM/FM/CB Tri-Band (inc. w/CB, w/air cond. only) • Power Disc Brakes, Front (Req. w/V-6 and air cond., or V-8) • Power Door Locks • Power Rear Vent Windows (Sedan only) • Power Seat, Driver, 6-way • Power Steering (Req. w/V-6 and air cond., or V-8) • Power Front Windows • Radio AM/FM • Radio, AM/FM

- Stereo • Radio, AM & Stereo 8-track Tape Player • Radio, AM/FM Stereo & Stereo 8-track Tape Player • Radio AM/FM Stereo & Cassette Tape Player • Radio AM/FM Stereo w/Digital Clock (NA Clock) • Radio, AM/FM w/40-Channel CB • Radio, AM/FM Stereo w/40-Channel CB • Radio Speakers, Dual Front & Rear (Std. w/Stereo radios) • Radio Speaker, Rear (w/AM and AM/FM Radios only) • Seat, Reclining Passenger (Notchback, 60/40 and bucket seats only) • Steering Wheel, Tilt (w/auto trans.; NA/DeLuxe Cushion steering wheel) • Sunroof, Power Glass (Coupes only) • Sunroof, Power Metal (Coupes only) (Sunroof reduces headroom)

WHEELS, WHEEL COVERS AND STEERING WHEELS

See page 11

MODELS

- Grand Am Coupe
- Grand Am Sedan

STANDARD EQUIPMENT

- Grand Am Exterior**
- New Grille Appearance
 - Pontiac Crest and Nameplate on Front End Panel
 - Single Rectangular Hood Lamps • "Grand Am" Nameplate on Front Fender • New Wide, Wraparound Tail Lamps with Black Bezels
 - Deck Lid Lock Cover with Crest • Concealed Windshield Wipers • Wheel Opening Moldings • Windowill Moldings • Peripheral-type Body Lower Side Molding
 - Body-color Inserts in Outside Door Handles • Side Window Reveal Moldings on Sedan • Dual Horns • Roof Drip Moldings • Resilient, Energy-absorbing Front & Rear Bumpers • Body-color Bumpers with Bright Rub Strips • Black Rocker Molding • Hubcaps with Pontiac Crest

Grand Am Interior

- Full-Width Seats in New Dover II Cloth • Cloth and Vinyl or All-vinyl Seats with Front Center Armrest or Loose-pillow Design Notch-back Cloth Seats Available
- Cloth or Vinyl Bucket Seats Available • Fally Upholstered Door Panels
- Door Panel Pull Straps
- Carpeted Lower Door Panels
- Dome Lamp Switches on All Doors • Deluxe Cushion Steering Wheel • Column-mounted Dimmer Switch

- Brushed aluminum Applique on Instrument Panel Trim Plate
- Tilt-type Non-glare Mirror
- Inside Hood Latch Release
- Nylon-blend, Cut-pile Carpeting • Inertia-type Automatic Seatback Lock on Coupes
- Luggage Compartment Mat
- Bin-type Glove Compartment with coin holder
- Cigar Lighter

CHASSIS FEATURES:

- High-energy Ignition System • Catalytic Converter
- Delco Freedom® Battery
- Rally RTS Radial Tuned Suspension with Radial Tires and with Computer-selected high-rate Front and Rear Coil Springs • Front and Rear Stabilizer Bars • Pliacell Shock Absorbers

Standard Tires

- 205/70R14 Black Steel Belt Radial
- 205/70R14 White Letter Steel Belt Radial • 205/70R14 White Steel Belt Radial

Available Tires

- 205/70R14 White Letter Steel Belt Radial • 205/70R14 White Steel Belt Radial

Standard Steering

- Power Steering

Standard Brakes

- Manual Front Disc, Rear Drum

POPULAR EQUIPMENT AVAILABLE

- Air Conditioning, Custom
- Air Conditioning, Automatic Climate Control • Clock, Digital (w/lamp group & air cond. only) • Clock, Electric

FACTS & FIGURES

GRAND AM

POWERTRAINS

Engine*	[Order Code]	Certi-fication(1)	Trans-mission	Gearshift Location	Axle Ratios		
					Std.	Avail.	V82†
**3.8 Litre (231 CID) 2-961 V-6 [L05]*B		F	**Man. 3-Speed	Floor	2.93	NA	NA
			Man. 4-Speed	Floor	2.93	NA	NA
4.9 Litre (301 CID) 2-961 V-8 [L27]*A	F	F	Automatic	Col/Floor	2.73	NA	NA
			Automatic	Col/Floor	2.14/ 2.29††	NA	NA
4.9 Litre (301 CID) 4-961 V-8 [L37]*A	F	F	Man. 4-Speed	Floor	2.73	NA	NA
			Automatic	Col/Floor	2.58	NA	2.56
3.6 Litre (231 CID) 2-961 V-6 [L05]*B	C	C	Automatic	Col/Floor	2.73	NA	NA
			Automatic	Col/Floor	2.29	2.73	2.73
5.0 Litre (305 CID) 4-961 V-8 [L64]*C	C	C	Automatic	Col/Floor	2.73	NA	2.73
			Automatic	Col/Floor	2.73	NA	2.73

*Pontiacs are equipped with GM-built engines produced by the following Divisions: A—Pontiac B—Buick C—Chevrolet.
†With Altitude Emission (UPC NA6)—designed and recommended for high altitude, operation.

**Base powertrain.

††Manufacturer's option.

‡Trailer-towing package.

(1) F—Federal; A—Altitude; C—California.

- Console (w/bucket seats & lamp group only) • Cruise Control (w/auto. trans. & power brakes only) • Deck Lid Release, Remote Control

- Defroster, Electric Rear Window • Gages, Instrument Panel (Inc. trip odo.—does not Inc. clock—NA V-6)

- Gages, Rally & I/P Tach (Inc. trip odo.—does not Inc. Clock, NA w/V-6 or Clock)
- Glass, All Windows Soft Ray • Insulation, Additional Acoustical • Lamp Group
- Lamp, Dome Reading
- Luggage Compartment Trim
- Mirror, Illuminated Visor RH • Mirrors, LH Remote

- Control Sport, RH Man. Adj.
- Mirror, LH Remote Control Chrome • Mirrors, LH & RH Remote Control Sport
- Mirror, Visor Vanity RH
- Power Antenna (w/air cond. only) • Power Antenna, AM/FM/CB Tri-Band (Incl. w/CB, w/air cond. only)
- Power Disc Brakes, Front

DIMENSIONS

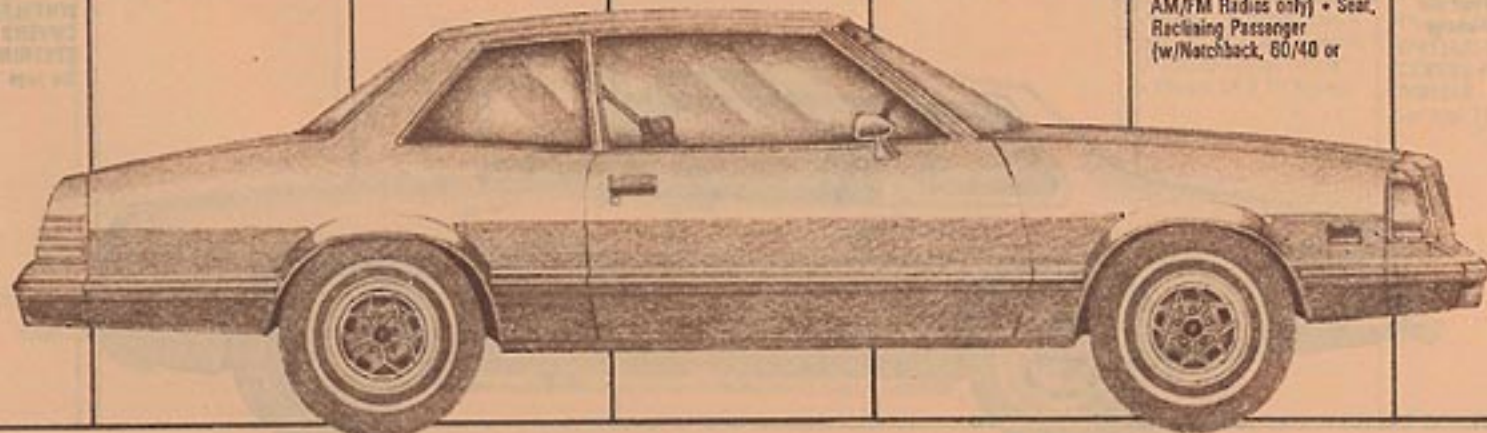
	Coupe In. (in.)	Sedan In. (in.)
Overall length	5041 (198.6)	5041 (198.6)
Overall width	1838 (72.4)	1838 (72.4)
Wheelbase	2745 (108.1)	2745 (108.1)
Tread, front/rear	1486/1467 (58.5/57.8)	1486/1467 (58.5/57.8)
Head room, front/rear	962/951 (37.9/37.8)	983/957 (38.7/37.7)
Leg room, front/rear	1086/997 (42.8/39.5)	1088/985 (42.8/39.0)
Shoulder room, front/rear	1442/1411 (56.8/55.6)	1442/1450 (56.8/57.1)
Hip room, front/rear	1314/1384 (51.7/54.5)	1326/1412 (52.2/55.6)
Trunk capacity	468 litres (16.6 cu. ft.)	

Published dimensions are for a base automobile without optional equipment or accessories. Additional accessories or equipment ordered at the customer's option can result in a minor change in these dimensions.

- (Req. w/V-6 and air cond., V-8 or Cruise Control) • Power Door Locks • Power Rear Vent Windows (Sedan only)
- Power Seat, Driver, 6-way
- Power Front Windows
- Radio, AM/FM • Radio, AM/FM Stereo • Radio, AM & Stereo 8-track Tape Player
- Radio, AM/FM Stereo & Stereo 8-track Tape Player
- Radio, AM/FM Stereo & Stereo 8-track Tape Player • Radio AM/FM Stereo w/Digital Clock (NA Clock) • Radio, AM/FM w/40-Channel CB • Radio, AM/FM Stereo w/40-Channel CB • Radio Speakers, Dual Front & Rear (Std. w/Stereo radios) • Radio Speaker, Rear (w/AM & AM/FM Radios only) • Seat, Reclining Passenger (w/Notchback, 80/40 or

- Bucket Seats only) • Shock Absorbers, Automatic Level Control • Shock Absorbers, Superlift • Steering Wheel, Tilt (w/auto trans. NA/Deluxe Cushion Steering Wheel)
- Sunroof, Power Glass (Coupe only) • Sunroof, Power Metal (Coupe only) (Sunroof Reduces Headroom)
- Trailer Group, Medium
- Windshield Wipers, Controlled Cycle

WHEELS, WHEEL COVERS AND STEERING WHEELS
See page 11



MODELS

- Sunbird Coupe
- Sunbird Sport Coupe
- Sunbird Sport Hatch

STANDARD EQUIPMENT

- Sunbird Exterior**
- New Grille with New Park and Signal Lamps • Quad Rectangular Headlamps • Tail Lamps with Amber Directional Signals • Body side Moldings • Bright Roof Drip Moldings • Sunbird Exterior Identification • Whitewall Tires • Custom Wheel Covers

- In Addition to Sunbird Exterior Features, Sport Coupe and Sport Hatch Include:** Body-color Sport Mirrors—LH Ramate Central • Windowill Moldings • Rocker Panel Moldings • Body-color Door Handle Inserts • Wheel Opening Moldings

Sunbird Interior

- Tinted Glass • Deluxe Cushion Steering Wheel with Soft Rim & Center • Bucket Front Seats in New Vinyl • Simulated Rosewood Applique on Instrument Cluster • Delco AM Radio • Stowaway Spare Tire • Nylon-bleed, Cut-pile Carpeting • Acoustical Insulation Package

- In Addition to Sunbird Interior Features, Sport Coupe and Sport Hatch Include:** Custom Bucket Front Seats in Vinyl

CHASSIS FEATURES

- Full Coil Suspension with Computer-selected Front and Rear Springs • High-energy

- Ignition • Catalytic Converter • Delco Freedom® Battery

Standard Tires

- A78-13 White Bias-ply
- B78-13 White Bias-ply (req. w/V-6)

Available Tires

- B78-13 White Bias-ply
- BR70-13 Black** • BR70-13 White** • BR70-13 White Lettered*1 • BR78-13 Whites* • B78-13 Stowaway Spare Std. (or Conventional Tire Available as Spare)

*Radial with Radial Toned Suspension

Includes RALLY RTS Suspension with: Larger front stabilizer bar, Rear stabilizer bar, Specifically tuned suspension components

Standard Steering

- Manual, Ball-race Gear

Standard Brakes

- Manual, Front Disc, Rear Drum

POPULAR EQUIPMENT AVAILABLE

- Air Conditioning, Custom Appearance Stripe Package (Coupes only) • Belts, Custom Color Keyed • Bumper Guards, Front & Rear • Bumper Strips • Console • Defroster, Electric Rear Window • Gages, Instrument Panel (Inc. Tach & Clock) • Lamp Group (glove box) • Power Disc Brakes, Front • Power Steering (Req. w/V-6 & Air Cond. and emission options or Tilt Wheel, w/V-6 or Handling Package) • Radio, AM/FM • Radio, AM/FM Stereo • Radio, AM & Stereo 8-track Tape Player • Radio, AM/FM Stereo & Stereo 8-track Tape Player • Seat,

FACTS & FIGURES

SUNBIRD

POWERTRAINS

Engine*	[Order Code]	Certi-fication(1)	Trans.	Gearshift Location	Axle Ratios	
					Std.	Avail.
**2.5 Litre (151 CID) 2-bbl 4-cyl. [LX8]*A (Cross Flow)		F	**Man. 4-Speed	Floor	2.73(2)	2.93
			Man. 4-Speed	Floor	2.93(3)	NA
			Man. 5-Speed	Floor	3.08	NA
3.8 Litre (231 CID) 2-bbl V-6 [L05]*B		F	Automatic	Floor	2.73	NA
			Man. 4-Speed	Floor	2.93	NA
			Man. 5-Speed	Floor	2.93	NA
5.0 Litre (305 CID) 2-bbl V-8 [L63]*C		F	Automatic	Floor	2.56	2.93
			Man. 4-Speed	Floor	3.08(2)	NA
			Automatic	Floor	2.29	NA
13.8 Litre (231 CID) 2-bbl V-6 [L05]*B		A	Automatic	Floor	2.53	NA
			Man. 4-Speed	Floor	2.93	NA
			Automatic	Floor	2.73	NA
2.5 Litre (151 CID) 2-bbl 4-cyl. [L56]*A		C	Man. 4-Speed	Floor	2.93	NA
			Man. 5-Speed	Floor	2.93	NA
			Automatic	Floor	2.56	NA
3.8 Litre (231 CID) 2-bbl V-6 [L05]*B		C	Man. 4-Speed	Floor	2.93	NA
			Man. 5-Speed	Floor	2.93	NA
			Automatic	Floor	2.56	NA
5.0 Litre (305 CID) 2-bbl V-8 [L63]*C		C	Automatic	Floor	2.29	NA
			Man 4-Speed	Floor	2.93	NA
			Automatic	Floor	2.73	NA

*Pontiac are equipped with GM-built engines produced by the following Divisions:

A—Pontiac B—Buick C—Chevrolet.

**Base powertrain. (1) F—Federal; A—Altitude; C—California.

(2) Heater only. (3) A/C only.

†With Altitude Emissions (UPC NA6)—designed and recommended for high altitude operation.

Fold-down Rear (Std. Sport Hatch) • Spoiler, Rear Deck

(req. Front & Rear Bumper Guards) • Steering Wheel,

Tilt (req. Power Steering w/ V-6 Engine, req. w/Formula

DIMENSIONS

	Coupe	Sport Hatch
	Min. (in.)	Max. (in.)
Overall length	4552 (178.2)	4552 (178.2)
Overall width	1661 (65.4)	1661 (65.4)
Wheelbase	2484 (97.0)	2484 (97.0)
Tread, front/rear	1405/1374 (55.3/54.1)	1405/1374 (55.3/54.1)
Head room, front/rear	865/846 (37.6/37.2)	858/897 (37.7/35.3)
Leg room, front/rear	1092/716 (43.0/28.2)	1092/752 (43.0/29.6)
Shoulder room, front/rear	1313/1290 (51.7/50.8)	1295/1390 (51.0/51.2)
Hip room, front/rear	1234/1067 (48.5/42.0)	1295/1067 (47.5/42.0)
Trunk/Cargo Capacity	187 Lires (6.6 cu. ft.)	787 Lires (27.8 cu. ft.) ⁽¹⁾

Published dimensions are for a base automobile without optional equipment or accessories. Additional accessories or equipment ordered at the customer's option can result in a minor change in these dimensions.

(1) Rear seat down.

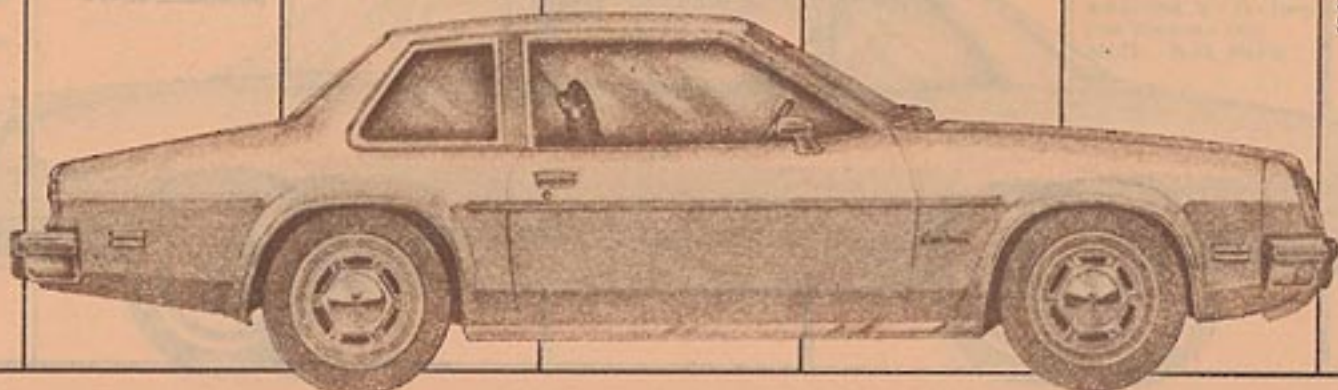
Steering Wheel • Sunroof, Removable (Sunroof Reduces Headroom) • Top, Landed with Formal Window • Wheel Opening Moldings (Coupe only) • Windshield Wipers, Controlled Cycle

Luxury Trim Includes: Luxury Seats in Cloth or Vinyl • Luxury Door Trim with Map Pockets • Custom Seat & Shoulder Belts • Woodgrain applique on Rtl Instrument Panel • Rear Seat Ash Trays • Luxury Carpeting • Luxury Cushion Steering Wheel

• Non-glare Inside Rearview Mirror

W66 Formula Package Includes: Blacked-out Grille • Body-colored Sport Mirrors • Black Rally Wheels • BR70-13 Black Tires • Rally RTS Handling Package • Rally Gages & Tachometer • Black Lower Body with "Formula" Lettering and Accent Stripes • Black Window Moldings (Sport Hatch only) • Black Rear End Panel with Accent Stripes • Rear Spoiler • Front Air Dam

WHEELS, WHEEL COVERS AND STEERING WHEELS
See page 11



MODELS

- Phoenix Coupe
- Phoenix Hatchback
- Phoenix Sedan
- Phoenix LJ Coupe
- Phoenix LJ Sedan

STANDARD EQUIPMENT

Phoenix Exterior
 • Single Rectangular Headlamps • Body-color Front Bumper Center Pad • Phoenix Nameplates • Tail Lamps with Amber Directional Signals • Reef Drip Moldings • Hubcaps with Pontiac Crest

In Addition to Phoenix Exterior Features Phoenix LJ Includes:

Stand-up "Phoenix" Hood Ornament • Hood Windsplit Molding • "Pontiac" Lettering on Front Nose Panel • Front and Rear Bumper Strips • Front and Rear Bumper Outer Pads • Side Window Reveal Moldings • Wide, Wraparound Tail Lamps w/Amber Directional Signal Lenses • Deluxe Wheel Covers • Deck Lid Lock Cover • Ribbed, Extra-wide Rocker Panel Moldings and Extensions • Wheel Opening Moldings

Phoenix Interior
 • Full-Width Front Seat in Cloth & Vinyl (All-Vinyl std. in Hatchback, all others avail.) • Front Bucket Seats Available • Deluxe Cushion Steering Wheel • Phoenix Nameplate on Right Side of Instrument Panel • Cigar Lighter • Front and Rear Ash Trays • Nylon-blend Cut-pile Carpeting • Front

Door Dome Lamp Switches

- Front and Rear Door Annrests

In Addition to Phoenix Interior Features Phoenix LJ Includes:

Notchback Front Seat with Center Armrest (Seats Available in Luxury Cloth and Vinyl or All-Vinyl) • Front Bucket Seats Available • Instrument Panel Assist Grip • Color-keyed Luxury Cushion Steering Wheel • Day-Night Inside Rearview Mirror • Dome Lamp Switches on all Doors • Padded Door Panels with Map Pockets in Front • Added Acoustical Insulation

CHASSIS FEATURES

- Front Coil, Rear Leaf Springs
- High-energy Ignition System • Catalytic Converter • Delco Freedom® Battery

Standard Tires

- E78-14 Black Bias-belted

Available Tires

- E78-14 White Bias-belted
- ER78-14 White*
- FR78-14 White*†
- FR78-14 White Lettered*†

*Seat-belted Refills with Radial Toned Suspension

Includes RALLY HTS Suspension with: Larger front stabilizer bar, Rear stabilizer bar, Specifically tuned suspension components

Standard Steering

- Manual, Ball-race Gear

Standard Brakes

- Manual, Front Disc, Rear Drum

FACTS & FIGURES

PHOENIX

POWERTRAINS

Engine*	[Order Code]	Certi-fication(1)	Trans-mission	Gearshift Location	Axle Ratios		
					Std.	Avail.	V81 ‡
**3.8 Liter [231 CID]		F	**Man. 3-Speed	Col	3.05	NA	NA
2-bbl V-6 [L05]*B			Automatic	Col/Floor	2.56	3.23	NA
5.0 Liter [305 CID]		F	Man. 4-Speed	Floor	3.08	NA	NA
2-bbl V-8 [LG3]*C			Automatic	Col/Floor	2.41	3.08	2.41/3.08
15.7 Liter [350 CID]		A	Automatic	Col/Floor	3.08	NA	3.08
4-bbl V-8 [LM1]*C							
3.8 Liter [231 CID]		C	Automatic	Col/Floor	2.56	NA	NA
2-bbl V-6 [L05]*B							
5.0 Liter [305 CID]		C	Automatic	Col/Floor	2.41	NA	2.41
2-bbl V-8 [LG3]*C							
5.7 Liter [350 CID]		C	Automatic	Col/Floor	2.41	3.08	2.41/3.08
4-bbl V-8 [LM1]*C							

*Pontiacs are equipped with GM-built engines produced by the following Divisions: B—Buick C—Chevrolet.

**Base powertrain.

†With Altitude Emissions (UPC NA6)—designed and recommended for high altitude operation.

‡Trailer-towing package.

(1) F—Federal; A—Altitude; C—California.

DIMENSIONS

	Coupe			Hatchback			Sedan		
	Min. (in.)	Max. (in.)	Min. (in.)	Max. (in.)	Min. (in.)	Max. (in.)	Min. (in.)	Max. (in.)	
Overall length	5166 (203.4)	5166 (203.4)	5166 (203.4)	5166 (203.4)	5166 (203.4)	5166 (203.4)	5166 (203.4)	5166 (203.4)	
Overall width	1838 (72.4)	1838 (72.4)	1838 (72.4)	1838 (72.4)	1838 (72.4)	1838 (72.4)	1838 (72.4)	1838 (72.4)	
Wheelbase	2822 (111.1)	2822 (111.1)	2822 (111.1)	2822 (111.1)	2822 (111.1)	2822 (111.1)	2822 (111.1)	2822 (111.1)	
Tread, front/rear	1572/1514 (61.9/59.8)	1572/1514 (61.9/59.8)	1572/1514 (61.9/59.8)	1572/1514 (61.9/59.8)	1572/1514 (61.9/59.8)	1572/1514 (61.9/59.8)	1572/1514 (61.9/59.8)	1572/1514 (61.9/59.8)	
Head room, front/rear	970/932 (38.2/36.7)	970/932 (38.2/36.7)	970/932 (38.2/36.7)	970/932 (38.2/36.7)	970/932 (38.2/36.7)	970/932 (38.2/36.7)	970/932 (38.2/36.7)	970/932 (38.2/36.7)	
Leg room, front/rear	1059/823 (41.7/32.4)	1059/823 (41.7/32.4)	1059/823 (41.7/32.4)	1059/823 (41.7/32.4)	1059/823 (41.7/32.4)	1059/823 (41.7/32.4)	1059/823 (41.7/32.4)	1059/823 (41.7/32.4)	
Shoulder room, front/rear	1438/1405 (56.6/55.3)	1438/1405 (56.6/55.3)	1438/1405 (56.6/55.3)	1438/1405 (56.6/55.3)	1438/1405 (56.6/55.3)	1438/1405 (56.6/55.3)	1438/1405 (56.6/55.3)	1438/1405 (56.6/55.3)	
Hip room, front/rear	1354/1341 (53.3/52.8)	1354/1341 (53.3/52.8)	1354/1341 (53.3/52.8)	1354/1341 (53.3/52.8)	1354/1341 (53.3/52.8)	1354/1341 (53.3/52.8)	1354/1341 (53.3/52.8)	1354/1341 (53.3/52.8)	
Trunk/Cargo Capacity	393 Lbs (17.9 cu. ft.)	827 Lbs (37.4 cu. ft.) (1)	374 Lbs (16.9 cu. ft.)	393 Lbs (17.9 cu. ft.)	827 Lbs (37.4 cu. ft.) (1)	374 Lbs (16.9 cu. ft.)	393 Lbs (17.9 cu. ft.)	827 Lbs (37.4 cu. ft.) (1)	

Published dimensions are for a base automobile without optional equipment or accessories. Additional accessories or equipment ordered at the customer's option can result in a minor change in these dimensions.

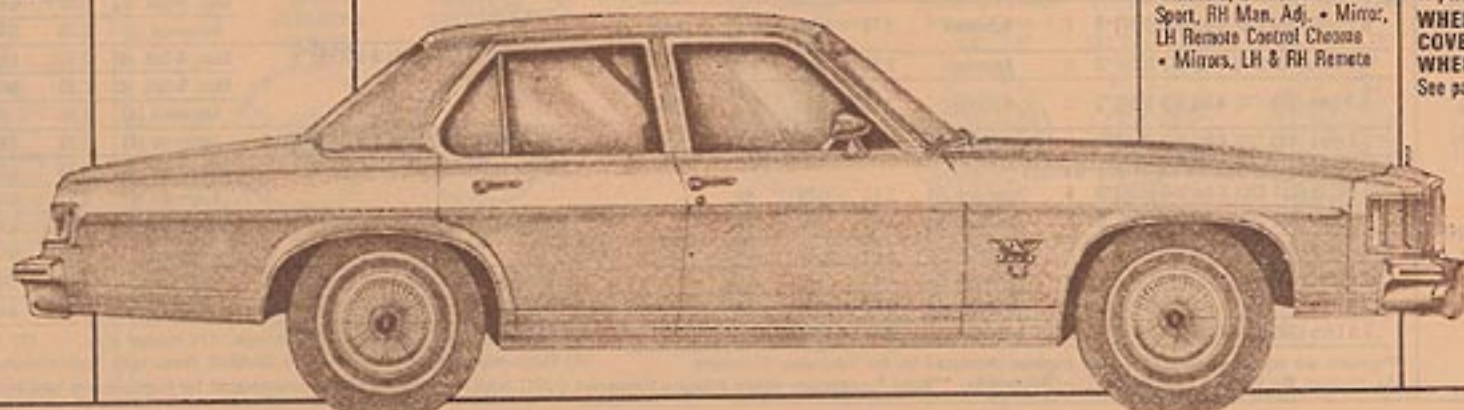
(1) Rear seat down

POPULAR EQUIPMENT AVAILABLE

- Air Conditioning, Custom
- Bumper Strips, w/Front & Rear Bumper Guards (Std. LJ)
- Carpet, Lead Floor (Hatchback only) • Clock, Electric • Console (w/Bucket Seats only; NA 3-Spd. Manual Trans.)
- Cruise Control (w/Auto Trans. only) • Defroster, Electric Rear Window (NA Hatchback) • Defogger, Rear Window (Hatchback only)
- Gages, Rally & Clock (w/V-8 only) • Glass All Windows Soft Ray • Horns, Dual • Insulation, Additional Acoustical (Std. LJ) • Lamp Group
- Mirrors, LH Remote Control Sport, RH Man. Adj. • Mirror, LH Remote Control Choose
- Mirrors, LH & RH Remote

- Mirror Rear-view Inside Non-glare (Std. LJ) • Power Disc Brakes, Front (Req. w/V-8 or V-6 w/Air Cond.) • Power Door Locks • Power Steering (Req. w/V-8 and FR78-14 Tires)
- Power Windows • Radio, AM/FM • Radio, AM/FM Stereo • Spare Tire, Stow-away (Std. Hatchback)
- Steering Wheel Tilt (NA 3-Spd. Manual Trans.) • Trailer Group, Light (NA Hatchback, V-6 or Man. Trans.) • Two-tone Paint, Specific • Window Vent, Swing-out Rear (NA Sedans or Landau Top) • Windshield Wipers, Controlled Cycle

WHEELS, WHEEL COVERS AND STEERING WHEELS
 See page 11



- MODELS**
 • Catalina Safari
 • Bonneville Safari

STANDARD EQUIPMENT
Catalina Safari
Exterior

- New Grille and Headlight Bezel Styling • Hood Ornament and Wind Split Molding
- Wheel Opening Moldings
- Roof Drip and Side Window Moldings • Rocker Panel Moldings • 3-way Tailgate
- Front & Rear Bumper Strips
- Power-operated Tailgate Window • Hubcaps with Pontiac Crest

In Addition to Catalina Safari

- Exterior Features, Bonneville Safari**
Includes: New Grille and Headlight Styling • Specific Hood Ornament • New Deluxe Wheel Covers • Simulated Woodgrain Siding • Bonneville Safari Identification on Front Fenders

Catalina Safari Interior

- Deluxe Cushion Steering Wheel • Column-mounted Dimmer Switch • Simulated Walnut Applique on Instrument Panel Trim Plate • Fully Upholstered Door Trim Panels
- All-vinyl Trim (Cloth Available) • Glove Compartment Lamp • Ash Tray Lamp • Inside Hood Latch Release • Nylon-blend, Cut-pile Carpeting • Lockable Floor & Side Compartments • Spare Tire Removal Assist Strap

In Addition to Catalina Safari

- Interior Features, Bonneville Safari**
Includes: All-vinyl Trim (Cloth Available) • Specific Door Panels with Luxury Trim and Carpeted Lower Area • Pull Straps on all Doors • Dome Lamp Switches on all Doors • Added Acoustical Insulation

CHASSIS FEATURES

- High-energy Electronic Ignition • Catalytic Converter
- Radial Tires with Radial Tuned Suspension

Standard Tires

- HR78-15 Black Steel-Belted Radials

- Available Tires**
 • HR78-15 White
 • HR78-15 Wide White
- Standard Steering**
 • Power Steering
- Standard Brakes**
 • Power Brakes

MODELS

- LeMans Safari
- Grand LeMans Safari

STANDARD EQUIPMENT
LeMans Safari

Exterior

- New Grille and Park and Signal Lamps • Single Rectangular Headlamps
- Resilient Front End Panel with Body-colored Bumper
- Bright Bumper Strips
- Concealed Windshield Wipers • Lift-type Tailgate Window • Convenient Fold-down Tailgate • Wheel Opening Moldings • Roof Drip Moldings • Hubcaps with Pontiac Crest

In Addition to LeMans Safari

Exterior Features, Grand LeMans Safari

- Includes:** Woodgrain Siding • Grand LeMans Stand-up Hood Ornament • Hood Windsplit Molding • Side Window Reveal Moldings • Brushed Aluminum Center Pillar • Woodgrain Inserts in Outside Door Handles • Dual Horns • Specific Grand LeMans Safari Identification

POWERTRAINS

Engine* [Order Code]	Certification†(1)	Transmission	Axle Ratios			
			Std.	Avail.	V81‡	V83‡
Catalina/Bonneville Safari						
**4.9 Litre (301 CID) 2-bbl V-8 [L27]*A	F	Automatic	2.56	NA	2.56	NA
4.9 Litre (301 CID) 4-bbl V-8 [L37]*A	F	Automatic	2.73	NA	2.73	NA
5.7 Litre (350 CID) 4-bbl V-8 [L77]*B	F	Automatic	2.73	3.08	2.73	3.08
†6.6 Litre (403 CID) 4-bbl V-8 [L80]*D	A	Automatic	2.73	NA	2.73	3.08
5.7 Litre (350 CID) 4-bbl V-8 [L34]*D	C	Automatic	2.41	2.73	2.41	NA
6.6 Litre (403 CID) 4-bbl V-8 [L80]*D	C	Automatic	2.41	NA	2.41	3.23
LeMans/Grand LeMans Safari						
**3.8 Litre (231 CID) 2-bbl V-6 [L05]*B	F	Automatic (4)	2.73	3.23	NA	NA
4.8 Litre (301 CID) 2-bbl V-8 [L27]*A	F	Automatic (4)	2.29	NA	NA	NA
4.8 Litre (301 CID) 4-bbl V-8 [L37]*A	F	Automatic (4)	2.29	2.56	2.56	NA
15.7 Litre (350 CID) 4-bbl V-8 [LM1]*C	A	Automatic (4)	2.73	NA	2.73	NA
3.8 Litre (231 CID) 2-bbl V-6 [L05]*B	C	Automatic (4)	2.73	NA	NA	NA
5.0 Litre (305 CID) 4-bbl V-8 [L64]*C	C	Automatic (4)	2.41	2.73	2.73	NA

*Pontiacs are equipped with GM-built engines produced by the following Divisions: A—Pontiac B—Buick C—Chevrolet D—Oldsmobile. **Base Powertrain. †With Altitude Emissions (UPC NA6)—designed and recommended for high altitude operation. ‡Trailer packages.

FACTS & FIGURES WAGONS

DIMENSIONS

	Catalina/ Bonneville Safari	LeMans/Grand LeMans Safari	Sunbird Sport Safari
	Min. (in.)	Min. (in.)	Min. (in.)
Wheelbase	2945 (116.0)	2745 (108.1)	2464 (97.0)
Overall length	5489 (215.9)	5025 (197.8)	4521 (178.0)
Overall width	2032 (80.0)	1843 (72.8)	1661 (65.4)
Front tread	1578 (62.0)	1486 (58.5)	1405 (55.3)
Rear tread	1629 (64.1)	1474 (58.0)	1374 (54.1)
Head room, front/rear	1007/1000 (39.6)/(39.4)	965/985 (38.8)/(38.8)	878/1019 (34.5)/(40.1)
Leg room, front/rear	1076/958 (42.4)/(37.7)	1086/912 (42.8)/(35.9)	1092/767 (43.0)/(30.2)
Cargo index vol., litres (cu. ft.) Seats Dwn.	2510 (88.7)	2049 (72.4)	1320 (46.6)
Length of cargo space at floor	2290 (89.2)	2064 (81.2)	1659 (65.3)
Top of front seatback to closed tailgate	2128 (83.8)	1852 (72.9)	1453 (57.2)
Min. distance between wheelhouses at floor	1224 (48.2)	1108 (43.6)	1080 (42.5)
Rear-end opening width at belt	1224 (48.2)	1312 (51.7)	1194 (47.0)
Max. Cargo height	763 (30.0)	763 (30.0)	726 (28.6)
Max. height at rear opening	729 (28.7)	706 (27.8)	653 (25.7)

Published dimensions are for a base automobile without optional equipment or accessories. Additional accessories or equipment ordered at the customer's option can result in a minor change in these dimensions.

LeMans Safari Interior

- Deluxe Cushion Steering Wheel • Column-mounted Dimmer Switch • Simulated

Wood Applique on Instrument Panel Trim Plate • All-vinyl Trim • Cloth or Vinyl Seats Available • Nylon-blend, Cut-

- pile Carpeting • Storage Compartment Under Cargo Load Floor • Sidewall Storage Compartments • Textured

Standard Steering

- Manual Ball-race Gear

Standard Brakes

- Power, Front Disc, Rear Drum

- Steel Cargo Floor Painted with Vinyl Paint • Inside Hood Release**

In Addition to LeMans Safari Interior Features.

- Grand LeMans Safari**
Includes: Luxury Cushion Steering Wheel • Newly Styled, Grand LeMans Interior Door Trim • Cloth or Vinyl Seats Available in 60/40, Notchback or Bucket Style • Carpeted Lower Door Panels • Door Pull Straps on All Doors • Dome Lamp Switches on All Doors • Added Acoustical Insulation

CHASSIS FEATURES

- Radial Tires with Radial Tuned Suspension
- Standard Tires**
- 195/75R14 Black Fiberglass Belt • Compact Spare

Available Tires

- 195/75R14 White Fiberglass • 195/75R14 White Steel Belt
- 205/70R14 Black Steel Belt † • 205/70R14 White Steel Belt † • 205/70R14 White-Letter Steel Belt †
- 205/75R14 White Steel Belt †

Standard Steering

- Manual Ball-race Gear

Standard Brakes

- Power, Front Disc, Rear Drum

- MODEL**
 • Sunbird Sport Safari

STANDARD EQUIPMENT

Exterior

- New Grille and Park & Signal Lamps • Roof Drip Moldings • Wheel Opening Moldings • Rocker Panel Moldings • Body-color Door Handle Inserts • Body-color Sport Mirrors • Body Side Molding • Custom Wheel Covers • Whitewall Tires • "Sunbird" Nameplates

Interior

- Tinted Windows • Deluxe Cushion Steering Wheel
- Simulated Rosewood Applique on Instrument Panel Trim Plate • Bucket Front Seats in Vinyl • Delco AM Radio • Cigarette Lighter • Nylon-blend, Cut-pile Carpeting • Door Dome Lamp Switches

CHASSIS FEATURES

- Full Coil Suspension with Computer-selected Springs

Standard Tires

- B76-13 White Bias-ply

Available Tires

- BR70-13 Black*†
- BR70-13 White Lettered*†
- BR70-13 White*†
- BR78-13 White*

***Steel-belted Radials with Radial Tuned Suspension**

- includes RALLY RTS Suspension with Larger front stabilizer bar, Rear stabilizer bar, Specifically tuned suspension components

POWERTRAINS

Engine* [Order Code]	Certification†(1)	Transmission	Axle Ratios	
			Std.	Avail.
Sunbird Sport Safari				
**2.5 Litre (151 CID) 2-bbl 4-cyl. [LX6]*A	F	Man. 4-Spd. (4)	2.73(2)	2.93(2)
(Crest Flow)		Man. 4-Spd. (4)	2.93(3)	NA
		Man. 5-Spd. (4)	3.08	NA
		Automatic (4)	2.73	NA
3.8 Litre (231 CID) 2-bbl V-6 [L05]*B	F	Man. 4-Spd. (4)	2.83	NA
		Man. 5-Spd. (4)	2.93	NA
		Automatic (4)	2.56	2.83
13.8 Litre (231 CID) 2-bbl V-8 [L05]*B	A	Automatic (4)	2.83	NA
2.5 Litre (151 CID) 2-bbl 4-cyl. [L56]*A	C	Man. 4-Spd. (4)	2.93	NA
		Automatic (4)	2.73	NA
3.8 Litre (231 CID) 2-bbl V-6 [L05]*B	C	Man. 5-Spd. (4)	2.83	NA
		Automatic	2.56	NA
2.5 Litre (151 CID) 2-bbl 4-cyl. [L58]*A	C	Man. 4-Spd. (4)	2.83	NA
(C-4 System—Avail. Approx. 2-1-79)		Automatic	2.73	NA

(1) F—Federal; A—Albino; C—California. (2) Heater only. (3) A/C only. (4) Floor-mounted Shift standard on Sunbird; Avail. with bucket seats on LeMans Safari.

STEERING WHEELS & WHEELS, WHEEL COVERS



DELUXE CUSHION STEERING WHEEL



LUXURY CUSHION STEERING WHEEL



Rally IV Wheels—14"
(1) Two-Tone Argent
(2) Solid Body Color



Deluxe Wheel Covers—15"



Grand Prix Deluxe Wheel Covers—14"



Wire Wheel Covers—13", 14", 15"



Genuine Wire Wheels—14"

S		A	A*	Senbird (All models)	13"						A	A	A (5) (2)
S		A	A	Senbird w/Formula Pkg.	13"						A	A	S (4) A (2)
S	A	A		Phoenix	14"	A				A (1) (3)			
	A	S		Phoenix LJ	14"	S				A (1) (3)			
S		A	A	Firebird	15"					A	A (1) (3)	A	A
		S	A	Firebird Esprit	15"					S	A (1) (3)	A	A
			S	Firebird Esprit w/Redbird Opt.	15"					NA	NA	S	NA
			S	Formula	15"					NA	S (1) A (3)	A	NA
			S	Trans Am	15"					NA	S (1) A (3)	A	NA
			S	Special Edition Trans Am	15"					NA	NA	S	NA
S	A	A		LeMans/Safari	14"	A	A (1) (2)	A				A	A
	A	S		Grand LeMans/Safari	14"	A	A (1) (2)	A				A	A
S	A			Grand Am	14"	A	A (2)	A				A	A
S	A	A		Grand Prix	14"		A (1) (2)	A			A	A	A
	A	S		Grand Prix LJ	14"		A (1) (2)	A			S	A	A
	S			Grand Prix SJ	14"		A (1) (2)	S			NA	A	A
S	A	A		Catalina/Safari	15"			A	A	A		A	A
S	A	A		Bonneville/Safari	15"			A	S	A		A	A
	A	S		Bonneville Brougham	15"			A	S	A		A	A

S—Standard
A—Available
NA—Not Available

CUSTOM SPORT STEERING WHEEL

FORMULA STEERING WHEEL

Deluxe Wheel Covers—14"

Custom Fined Wheel Covers—14", 15"

Rally II Wheels—14", 15"
(1) Two-Tone Argent
(3) Body Color

Cast Aluminum Wheels—13", 14", 15"

Rally Wheels 13" (5) Argent (4) Black (2) Solid Body Color



*NA Senbird Sport Safari

The right is reserved to make changes at any time, without notice, in prices, colors, materials, equipment, specifications and models, and to discontinue models. Check with your Pontiac dealer for complete information.



THE 1979 PONTIACS  OUR BEST GET BETTER

