

1982 OLDSMOBILE



CUTLASS CIERA • CUTLASS SUPREME • CUTLASS CRUISER • OMEGA

Even in these
practical times, there's still
room to do it with style.

You know times have changed. And you know cars have changed with the times. It had to be. Yet you can't help wondering...

"In today's world of more practical cars, more space-efficient cars, isn't there still room for some of the old romance, the old excitement?"

On the following pages, you'll find cars that bring back the romance and excitement. You'll find 1982 Oldsmobiles that combine form and function so ingeniously they ease both the mind and the body, while invigorating the spirit.

At Oldsmobile, there's still room to do it with style.

We've been doing it longer than anyone. Since 1897. Did you know Oldsmobile is America's oldest maker of cars?

That Oldsmobile introduced both the first fully automatic transmission and the first high-compression V8 engine in America?

That Oldsmobile developed a modern American front-wheel-drive system so popular today — back in 1965?

And that Oldsmobile offered the first American cars with a diesel V8 engine?

In short, cars that meet ever-changing needs is what Oldsmobile has been offering for 85 years.

Here we go again!

Introducing the 1982 Cutlass Ciera! Cutlass Supreme already is America's most popular mid-size car, thanks to its styling, ride, comfort and value.

Now along comes Cutlass Ciera to broaden that Cutlass appeal for more of today's economy-minded drivers.

First of all, Cutlass Ciera is a new kind of car that a lot of people have been looking for. Those sleek, aerodynamic lines are designed to cut through the wind, while helping you cut down on fuel bills.

It's the first Cutlass ever with front-wheel drive. That means flatter floors and impressive

is, you couldn't get a diesel V8 automobile before 1977. Then Oldsmobile made available a 5.7-liter diesel. It brought diesel economy to hundreds of thousands of people who may not have been able to afford it before.

Oldsmobile introduces a new 4.3-liter diesel V6.

It's for car buyers who want high mileage without sacrificing high style. This latest addition to the Olds lineup of engines is available on all the new Cutlass Ciera and Cutlass Supreme models.

V6 or V8, with a diesel Olds you save two ways. You get more miles per gallon and you get it on diesel fuel, which has traditionally been less expensive than unleaded gas.

If you need one additional compelling reason to buy a diesel, consider this. People who have checked various used car guides have found that, averaged out, much of the cost of the diesel option has often been returned to the owner at resale.

Other features you'll like in a diesel Oldsmobile.

- Fast-Start Glow Plug system. Can have your Olds ready to start in about 8 seconds at 0°F.
- Roller hydraulic lifters.
- In-line fuel filter system. Helps screen out solid impurities.
- Water-in-fuel detection system. Comes with warning light.
- An available engine block and fuel-line heater for cold weather areas.

At Oldsmobile, economy takes on many shapes and forms.

It's aerodynamic lines and low-drag brakes and easy-roll tires. It's Computer Command Control

on gasoline engines and torque converter clutch and electronic fuel injection and 4-speed overdrive automatic transmission.

The features may vary from model to model, but they represent a concerted engineering effort to make the 1982 Oldsmobiles economical to operate at a time when economy is so important.

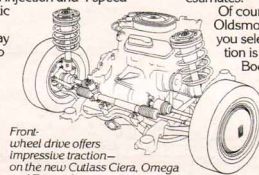
The accompanying Fuel Economy Estimate/Engine Supplement Sheet contains the EPA estimates for all our cars, plus

highway and city range estimates.

Of course, whichever Oldsmobile model you select, its foundation is the renowned Body by Fisher. And that means quality and meticulous attention to fit and finish.

Quality cars have always been our primary concern.

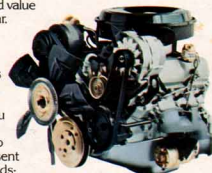
When the Oldsmobile Motor Vehicle Company was first founded back in 1897, it had as its stated objective "... to build one carriage in as nearly per-



Front-wheel drive offers impressive traction — on the new Cutlass Ciera, Omega and Toronado.



Computer Command Control on all gasoline engines. Helps reduce exhaust emissions while allowing good fuel efficiency.



Two diesels available in 82. 4.3-liter diesel V6 and 5.7-liter diesel V8.

fect a manner as possible." Through all those years, we have remained dedicated to that principle of offering automobiles that provide quality, reliability and value for the dollar.

That's what new-car buyers have always wanted and that's what we think you are looking for today. To you, we present the 1982 Oldsmobiles. Read about them in this catalog. Then take a test drive. They'll prove that even in practical times like these, there's still room to do it with style.



They slip through the air with aerodynamic ease.

Oldsmobile

We've had one built for you.

Important: A word about this catalog. We have tried to make this catalog as comprehensive and factual as possible and we hope you find it helpful. However, since the time of printing, some of the information you will find here may have been updated. Also, some of the equipment shown or described throughout this Olds catalog is available at extra cost. Your dealer has details and, before ordering, you should ask him to bring you up-to-date. The right is reserved to make changes at any

time, without notice, in prices, colors, materials, equipment, specifications and models. Check with your Olds dealer for complete information. **A word about engines:** Some Oldsmobiles are equipped with engines produced by other GM divisions, subsidiaries or affiliated companies worldwide. See your dealer for details. Please refer to the "Fuel Economy Estimate/Engine Supplement Sheet" provided to your dealer for engine source and EPA mileage estimates.

Table of Contents:	PAGES
Cutlass Ciera	4-10
Cutlass Ciera Engineering Features	11
Cutlass Ciera Facts & Figures	12-13
Cutlass Supreme	14-18
Cutlass Cruiser	19
Cutlass Supreme Facts & Figures	20-21
Omega	22-27
Omega Facts & Figures	28-29
Options & Accessories	30-31
Complete Olds Model Line	32



Visual proof that there's still room to do it with style. The instrument panel of the new Cutlass Ciera features hooded instruments and a distinctive international look.

traction in rain, snow or sand. Ask any Toronado or Omega owner.

Cutlass Ciera also offers the highest EPA mileage estimates of any Cutlass ever, while providing plenty of room to enjoy it all.

Cutlass Supreme or Cutlass Ciera, which Cutlass is right for you? There's only one sure way to find out. Test-drive both of them.

Incidentally, why not test-drive a diesel Oldsmobile? They're very popular today. The fact

*Today there's a new way of life.
And you know it. So you've made it
your way of life. Active. Spirited.
Open to adventure.*

To you we present
**CUTLASS CIERA
BROUGHAM
SEDAN**



*That relaxed, confident feeling.
You know it well. The smooth ride... the
excitement that lets your spirit soar.
A great way to arrive.*

To you we present
**CUTLASS CIERA
BROUGHAM
COUPE**



What you ask for is a straightforward presentation—the facts—but with enough style and good thinking to shape those facts into a new point of view.

To you we present
**CUTLASS CIERA
 LS SEDAN**



Introducing the new Ciera. First Cutlass with front-wheel drive!

Cutlass Ciera isn't just another "car for the times." It's more. It is a new, highly efficient car designed, engineered and built for the driver and family of today.

Cutlass Ciera will impress you with fuel economy.* But it still considers and caters to your needs for room, comfort and quality. Cutlass Ciera, after all, is an Oldsmobile.

Cutlass Ciera is our latest example of Oldsmobile comfort—and style.

At 50 miles per hour, an automobile spends about half of its required horsepower fighting wind resistance. So Cutlass Ciera wasn't just designed on a drawing board. It was designed—and proven—in a wind tunnel. Result: a new aerodynamic shape that

slips through the wind with ease. Engineers may call it "slippery." You'll call it stylish.

Treat yourself to a test drive. You'll discover that what front-wheel drive did for Toronado and Omega, it now does for Cutlass Ciera—in a big way.

*See EPA mileage estimates in accompanying Fuel Economy Estimate/Engine Supplement Sheet.

You know it's more than looks that create a classic. It's attention to fit and finish. It's pride in every inch that pays off in gracefully efficient response. On Sea. Or land.

To you we present
**CUTLASS CIERA
 LS COUPE**



With front-wheel drive, the engine weight is over the wheels that both power and steer you. That means impressive traction in rain, snow or sand in the new Cutlass Ciera.

Head for the open road and sample Cutlass Ciera's smooth, quiet ride—

with MacPherson strut suspension up front and sporty feel of the road.

Stretch out. Relax. That's what Cutlass Ciera's new space-efficient interior is all about.

And notice that while you cruise in comfort, the fuel gage needle is

in no hurry to go anywhere.

A bevy of engineering achievements is why.

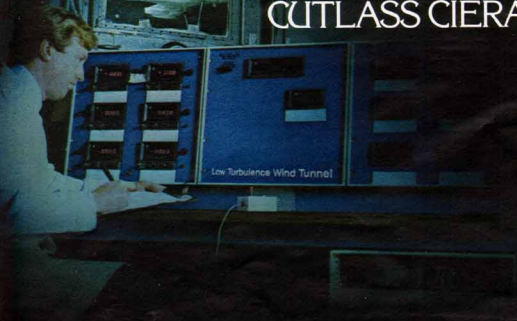
The standard 2.5-liter L4 engine, for example, features new electronic fuel injection that helps Cutlass Ciera sip gasoline like vintage wine.*

A 3.0-liter V6 engine is available, too, with Computer Command Control, an on-board computer that helps fine tune the engine as you drive.

Or for top Cutlass Ciera fuel economy,* a new 4.3-liter diesel V6 is available. It's the newest addition

Air drags like an anchor on an object in motion. But you know the way to sever its grip—with sleek, wind-tunnel-tested shapes that slice through space.

To you we present
CUTLASS CIERA



Low-Turbulence Wind Tunnel



to the Olds lineup of engines. And remember, Ciera is a Cutlass. So you get all that economy with Oldsmobile style. Power steering, power low-drag front disc brakes, automatic transmission, side window defoggers, full-wheel covers,

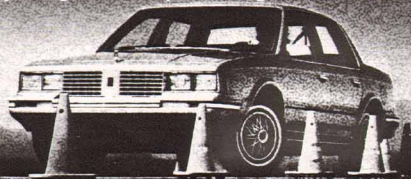
Delco AM radio (may be deleted for credit) and more—all standard. Cutlass Ciera—the new, aerodynamically designed front-wheel-drive Cutlass. Six models in all... all with Oldsmobile style. **Cutlass Ciera Brougham.** The

most luxurious Ciera. Both coupe and sedan feature a divided front seat with individual controls, center armrest and a loose-pillow look. **Cutlass Ciera LS.** An elegant, yet practical coupe and sedan with custom sport front seat and fold-

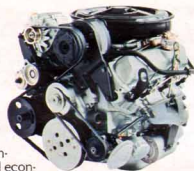
down center armrest standard. **Cutlass Ciera.** The lowest-priced Cutlass. Coupe and sedan with full-foam bench seats. Olds style and a lot of value for the money. Take a test drive in a new front-wheel-drive Cutlass Ciera today.

*See EPA mileage estimates in accompanying Fuel Economy Estimate/Engine Supplement Sheet.

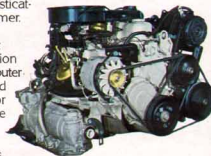
The quality runs deep in every Cutlass Ciera.



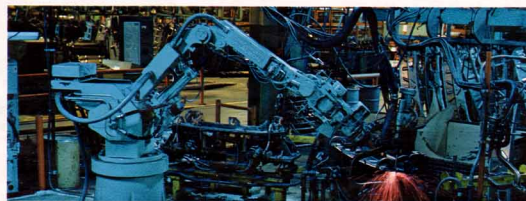
All-new diesel V6! A 4.3-liter engine now available. It features impressive fuel economy and Fast-Start Glow Plug System.



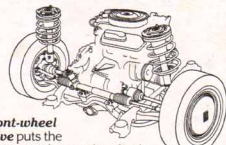
Standard 2.5-liter I4 Engine. A smooth and sophisticated performer. Features electronic fuel injection and Computer Command Control for impressive mileage and low emissions.



Convenient fuse block location. It's right inside the glove compartment. Just pop off the cover plate for easy service access.

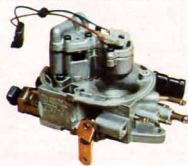


A new level of fit and finish. To help maximize quality, new manufacturing systems have been introduced, including robotic and computer-performed assembly and testing procedures. A robotic arc welding system (above) makes spot-welds quickly and precisely.



Front-wheel drive puts the engine weight over the wheels that power and steer you for impressive traction. **MacPherson strut front suspension** adds to Cutlass Ciera's smooth, quiet ride.

Electronic fuel injection. Standard on 2.5-liter I4 engine. Replaces the traditional carburetor and provides electronic metering of air and fuel for impressive economy.*



Computer Command Control. Standard on all gasoline engines. Features an on-board computer that monitors selected engine functions and fine tunes the engine while you drive—to help reduce emissions while allowing good fuel efficiency.





Cutlass Ciera instrument panel. With a new international look. Rocker switches replace traditional push-pull switches. Deluxe steering wheel with vinyl grips standard.



Headlamp-on reminder. Standard on all models. It sounds and flashes a warning if headlamps are on when driver's door is opened.



Large trunk capacity. See all that luggage? It will fit neatly into the Cutlass Ciera trunk. Great for vacation trips.



New patch rearview mirror. Designed with sleek, stylish shape.

Consoles available. One with shift lever. One with extra storage space for cassette tapes.

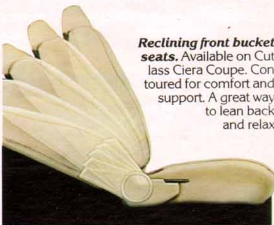
Side window defoggers. Standard on Cutlass Ciera for your convenience.



Wheel trim. (A) Deluxe wheel discs are standard. Available: (B) Wire wheel discs with locks, (C) Super stock wheels and (D) Rallye wheels.



Extensive anti-corrosion measures. Includes galvanneal metals, plastisols, sealers, front fender liners, waxes and zinc-rich primers.



Reclining front bucket seats. Available on Cutlass Ciera Coupe. Contoured for comfort and support. A great way to lean back and relax.

CUTLASS CIERA STANDARD EQUIPMENT

- Chassis and Body:**
- Computer Command Control
 - Electronic Fuel Injection
 - High-Energy Ignition System
 - Power Rack-and-Pinion Steering
 - Low-Drag Power Front Disc Brakes
 - MacPherson Strut Front Suspension
 - Front and Rear Bumper Fascia Covers
 - Bright Roof Drip and Belt Reveal Moldings
 - Extensive Anti-Corrosion Treatments
 - Space Efficient, Full-Width, Flat Trunk Space
 - Maintenance-Free Battery
 - Dekotron
 - Automatic Transmission with Torque Converter Clutch
 - Easy-Roll Tires are Match-Mounted to Each Wheel
 - Dual Fluidic Action Windshield Washer System
 - Patch-Style Outside Mirror
 - Deluxe Wheel Discs

Interior:

- Full-Foam Seat Construction, Front and Rear
- Armrest, Front and Rear
- Simulated Walnut Grain Instrument Panel Accents
- Side Window Defogger
- Interior Operated Hood Lock Release
- Headlamp-On Warning
- Cigar Lighter
- Inside Day/Night Rearview Mirror
- Deluxe Seat Belts Color-Matched to Individual Interiors
- Flo-Thru Ventilation System
- Deluxe Steering Wheel
- AM Pushbutton Radio with Dual Front Speakers and Fixed Mast Fender Antenna (may be deleted for credit)
- Cut Pile Carpeting, Wall-to-Wall with Carpeted Lower Door Panels
- Automatic Front-Door Lamp Switches
- Dome Lamp

STANDARD EQUIPMENT BY MODEL

Cutlass Ciera Coupe and Sedan:

- Engine 2.5-liter L4, with Electronic Fuel Injection
- Automatic Transmission
- Bench Seats, with Cloth or Vinyl Trim
- Moldings, Bright Roof Drip and Belt Reveal
- Deluxe Wheel Discs
- Tires, P185/80R13 Glass-Belted Radial-Ply Blackwall

Cutlass Ciera LS Coupe and Sedan:

- Engine 2.5-liter L4, with Electronic Fuel Injection
- Automatic Transmission
- Custom Sport Bench Seat with Center Armrest
- Cloth or Vinyl Trim
- Interior Door Pull Handles
- Front-End Panel Stand-Up Ornament
- Rocker Panel and Wheel-Opening Moldings
- Specific Pillar Identification
- Deluxe Wheel Discs
- Tires, P185/80R13 Glass-Belted Radial-Ply Blackwall

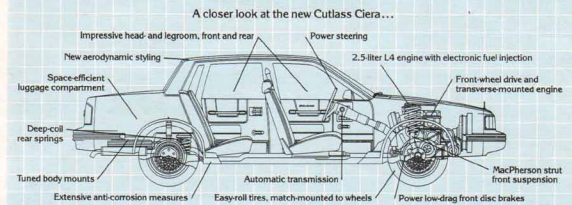
Cutlass Ciera Brougham Coupe and Sedan:

- Engine 2.5-liter L4, with Electronic Fuel Injection
- Automatic Transmission
- Divided Front Seat with Individual Controls and Center Armrest
- Front Velour Trims
- Bright Rocker Panel and Wheel-Opening Moldings, plus Wide Lower Moldings on Doors, Front Fenders and Rear Quarters
- Specific Front-End Panel Stand-Up Ornament
- Deluxe Wheel Discs
- Tires, P185/80R13 Glass-Belted Radial-Ply Blackwall
- Convenience Group, Lamps, Visor Vanity Mirror and Chime Tones

CUTLASS CIERA/CIERA LS/CIERA BROUGHAM AVAILABLE EQUIPMENT:

- 6-Way Power Seat Adjuster (Bucket Seat, Driver Side)
- 6-Way Power Seat Adjuster (Divided Seat, Driver Side, LS and Brougham)
- Removable Tempered Glass Sunroof
- Reclining Seat Back, Passenger Side
- Power Door Locks
- Soft-Ray Tinted Glass
- Power Side Windows
- Power Trunk/Lid Lock Release
- Auxiliary Floor Mats, with Carpet Inserts
- Contour Reclining Front Bucket Seats
- Deluxe Luggage Compartment Trim
- Body Side Moldings, Color-Matched to Body, or Vinyl Rooftop if ordered
- Custom Sport Steering Wheel
- Tilt-Away Steering Wheel
- High-Capacity Battery
- Instrument Panel Rallye Gages

- Floor Mats, Front and Rear with Carpeted Inserts
- Bright Door-Edge Guards
- Landau Padded Vinyl Roof Covering (Couple)
- Full Vinyl Roof Covering
- Four-Season Air Conditioner
- Combination Dome and Reading Lamp
- Electric Rear Window Defogger
- Sport Console, with or without Shifter
- Cruise Control with Resume Feature
- Super Stock Wheels, Color-Matched to Body
- Wire Wheel Discs with Locks
- Puncture Sealing Tires
- Tires, P185/80R13 Steel-Belted Radial-Ply Blackwall
- Tires, P185/80R13 Steel-Belted Radial-Ply White-Stripe
- Tires, P185/75R14 Steel-Belted Radial-Ply Blackwall or White-Stripe required and available only with diesel engine
- Pulse Windshield Wiper System
- Luggage Compartment Trim, Deluxe
- Body Side Accent Stripes
- Engine Block Heater; Engine Block Heater, plus Fuel-Line Heater (Diesel only)
- Convenience Group, Lamps, Visor Vanity Mirror and Chime Tones (Std. on Brougham)
- Tungsten Halo Headlamps (High-Beams)
- Two-Tone Paint Scheme
- Firm Ride and Handling Package
- Automatic Electric Leveling System
- High-Capacity Radiator and Cooling System
- Radios and Tape Players (See Page 30)
- 3.0-liter V6, 2-bbl. Engine
- 4.3-liter Diesel V6 Engine
- Outside Mirrors - Remote Control Driver Side; Color-keyed Driver Side; Remote, Passenger Side Manual; Color-coordinated Driver; Passenger Side Remote Control



A closer look at the new Cutlass Ciera...

CIERA POWER TEAMS		Carburetion.....2.8 liter		DIMENSIONS (Coupe/Sedan)		Fuel Tank Capacity,		Shoulder Room,	
Standard Diesel		2.5 L4		Overall Length		Gasoline (gals.)		front (in.)	
Liter/Type.....	2.5 L4	Overall Length (in.).....	188.4/188.4	Wheelbase (in.).....	104.9/104.9	Headroom, rear (in.).....	15.7/15.7	56.2/56.2	
Carburetion.....	Electronic Fuel Injection	Wheelbase (in.).....	104.9/104.9	Luggage Capacity (cu. ft.).....	15.8/15.8	Headroom, front (in.).....	16.6/16.6	57.0/56.2	
Available Engine.....	3.0 V6	Wheelbase (in.).....	104.9/104.9	Luggage Capacity (cu. ft.).....	15.8/15.8	Headroom, rear (in.).....	38.6/38.6	42.1/42.1	
Liter/Type.....	3.0 V6	Wheelbase (in.).....	104.9/104.9	Luggage Capacity (cu. ft.).....	15.8/15.8	Headroom, rear (in.).....	37.9/38.0	35.8/36.4	

*See EPA mileage estimates in accompanying Fuel Economy Estimate, Engine Supplement Sheet.

You've got an eye for form, for elegance, for the kind of classic look that can be appreciated and valued for years.

To you we present
**CUTLASS
SUPREME
BROUGHAM
COUPE**



You have a taste for the finer things in life. Elegance. Beauty. A little space to grow. That's for you... and yours.

To you we present
**CUTLASS
SUPREME
BROUGHAM
SEDAN**



Cutlass Supreme. Classic styling in a total-value car. Over the past seven years, more U.S. new-car buyers chose Cutlass than any other car! Total value is why: It's not just the beautifully aerodynamic styling of the coupes or the formal look of

the sedans that have been turning so many heads and minds to Cutlass. It's the total value built into these cars. The handling. The ride. The room. The quality. The fuel economy.* And, traditional resale value. These are just some of the ways that let

you meet the needs of the times — and let you do it with style.

The Cutlass Supreme ride, for example, is smooth and quiet with computer-selected coil springs at each wheel.

Maneuvering in city traffic is a

pleasure with the trim size and standard power steering.

Inside, you find the kind of room, comfort and quality you expect in an Oldsmobile.

Seats are full-foam and deeply padded. Interior space is impressive

*See EPA mileage estimates in accompanying Fuel Economy Estimate; Engine Supplement Sheet.

You like what you see because good breeding always shows. The sleek lines, the high spirit, the feisty take-'em-all-on attitude of a leader.

To you we present
**CUTLASS
CALAIS**



with generous headroom and leg-room, front and rear. It's the kind of room that invites you to stretch out and relax. Please do so.

Cutlass Supreme value is designed and built right in — from drawing board to final inspection. Low-drag

power front disc brakes, automatic transmission, headlamp-on warning system, FIC-Thru ventilation, extensive anti-corrosion measures, high-energy electronic ignition system, front and rear bumper guards, deluxe steering wheel, wall-to-wall cut-pile

carpeting, deluxe wheel discs, easy-roll steel-belted radial-ply tires and more — all standard.

You'll find Cutlass Supreme is an impressive value at the fuel pumps, too, with standard 3.8-liter V6 or available 4.3-liter V8. Both feature

Computer Command Control with an on-board computer that fine-tunes the engine as you drive — to help reduce emissions and allow good fuel efficiency.

For even greater economy, you can order the available all-new 4.3-liter

You know that hard work and dedication are all in a day's work. You also know the importance of relaxing in comfort — and style — at the end of the day.

To you we present
**CUTLASS
SUPREME**



diesel V6 or popular 5.7-liter diesel V8 engine. A fuel-saving diesel choice few other cars can offer.

Cutlass Supreme — the practical, yet elegant total-value car, with a classic look and room to do it with style. Take a good look at each of

the new Cutlass Supreme models. Then take a test drive — in the one that's right for you.

Cutlass Supreme Brougham. The ultimate in Supreme luxury — with impressive velour upholstery and deep, loose-pillow-look seats. The

front seat is divided, with individual controls. The fold-down front center armrest is also standard.

Cutlass Calais. The sporty, grand touring coupe with reclining front bucket seats, custom sport steering wheel, dual sport rearview mirrors,

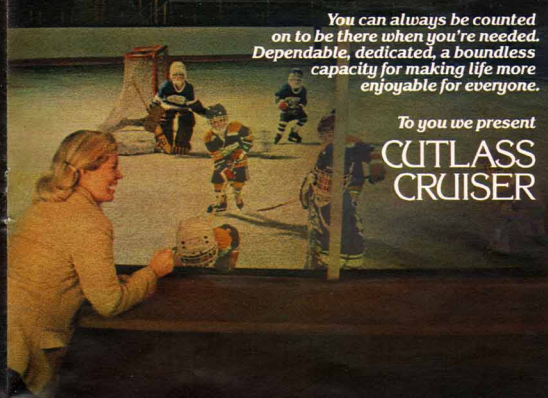
full instrumentation, rallye suspension — and a special flair for the open road. You gotta drive it.

Cutlass Supreme. Classic elegance and solid practicality help make it the most popular Cutlass ever. It's a lot of value for the money.

*See EPA mileage estimates in accompanying Fuel Economy Estimate/Engine Supplement Sheet.

You can always be counted on to be there when you're needed. Dependable, dedicated, a boundless capacity for making life more enjoyable for everyone.

To you we present
**CUTLASS
CRUISER**



Cutlass Cruiser. Do it with style without going overboard on price.

Cutlass has been America's best-selling mid-size car for years. Cutlass Cruiser has contributed to that popularity. It brings Cutlass style, comfort and value to a station wagon

generously endowed with space. You get up to 71.8 cubic feet of cargo area. There's also a tire storage compartment and small package storage compartments, available with locks.

Front center armrest and fully

carpeted cargo floor are standard. Power steering, power front disc brakes and automatic transmission also standard for driving ease.

And you aren't likely to find many wagons which offer so many engine choices.* A 3.8-liter V6 is standard,

three V8s available, including a 5.7-liter diesel.

From engine compartment to passenger compartment to cargo compartment, Cutlass Cruiser is a lot of wagon for the money. Best of all, it's an Oldsmobile!



Cutlass Supreme instrument panel features Butterfly Walnut grain vinyl and a deluxe steering wheel standard.



Rally gauge package. Available to help keep you informed. Standard on Cutlass Calais.



Lots of luggage space. Over 16 cubic feet of it in Cutlass Supreme.



Cutlass Supreme Sedan. It brings the elegance and flair of Cutlass styling to practical sedans.



Split-tailgate. Top swings up. Bottom drops down for a loading platform on Cruiser.



Wheel trim. (A) Standard on all models except Cutlass Calais. (B) Available with locks on all models. (C) Standard on Calais, available on all other models.



Exterior opera lamps. An elegant touch available on all Cutlass Supreme sedan models.



Custom sport steering wheel. Features padded vinyl grips and sporty metal spokes, available. Standard on Cutlass Calais.



All-new diesel V6. The latest engine addition. This available 4.3-liter diesel engine is designed for impressive mileage! A 5.7-liter diesel V8 is also available.

CUTLASS SUPREME/CRUISER AVAILABLE EQUIPMENT:

- Chassis and Body:**
- Computer Command Control
 - Electronic High-Energy Ignition System
 - Power Steering
 - Low-Drag Power Front Disc Brakes
 - Computer Selected Full Coil Springs
 - Tuned Body Mounts
 - Delcotron
 - Bumper Rear Strips with Integral Grilles
 - Front and Rear
 - Extensive Anti-Corrosion Treatments
 - Anti-Corrosion Front Fender Inner Liners
 - Easy-Rolling Tires
 - Automatic Transmission with Torque Converter Clutch
 - Hood Center Molding, plus Stand-Up Front End Panel Ornament
 - Bright Roof Drip, Rocker Panel and Wheel-Opening Moldings
 - Fluidic Windshield Washer
 - Recessed Windshield Wipers
 - P195/75R14 Steel Belted Radial-Ply Blackwall Tires
 - Deluxe Bright Wheel Discs

Interior:

- Full Foam Seat Construction
- Armrests, Front and Rear
- Cut-Plie Carpeting, Wall-to-Wall with Carpeted Lower Door Panels
- Interior Operated Hood Lock Release
- Simulated Butterfly Walnut Grained Instrument Panel Trim
- Cigar Lighter
- Headlamp-On Warning
- Inside Day/Night Rearview Mirror
- Deluxe Seat Belts
- Deluxe Steering Wheel
- Flo-Thru Ventilation
- Automatic Lamp Switches, Front Doors
- Front Door-Pull Handles

STANDARD EQUIPMENT BY MODEL:

- Cutlass Supreme Coupe and Sedan:**
- Engine, 3.8-liter V6, 2-Barrel
 - Automatic Transmission
 - Custom Sport Bench Front Seat with Center Armrest
 - Choice of Cloth Trim in Five Colors, Vinyl in Three Colors
 - Outside Rear-view Mirror, Driver and Passenger Side (Coupe), Driver Side (Sedan)

- Cutlass Supreme Brougham Coupe and Sedan:**
- Engine, 3.8-liter V6, 2-Barrel
 - Automatic Transmission
 - Divided Front Bench Seat with Individual Controls
 - Choice of Velour Trim in Five Colors
 - Outside Rearview Mirror, Driver and Passenger Side (Coupe), Driver Side (Sedan)
 - Specific Brougham Ornamentation

- Cutlass Calais Coupe:**
- Engine, 3.8-liter V6, 2-Barrel
 - Automatic Transmission with Floor Shift
 - Sport Console
 - Contour Reclining Front Bucket Seats
 - Choice of Cloth Trim in Four Colors, Vinyl in Two Colors
 - Instrument Panel Rally Gauges
 - Custom Sport Steering Wheel
 - Special Steering Gear Ratio
 - Larger Diameter Front Stabilizer Bar and Rear Stabilizer Bar
 - Tungsten Halogen Headlamps (High Beams)
 - Wide Lower Body Moldings on Front Fenders, Door and Rear Quarter Panels
 - Outside Sport-Flye Rearview Mirrors

Cutlass Cruiser 2-Seat Wagon:

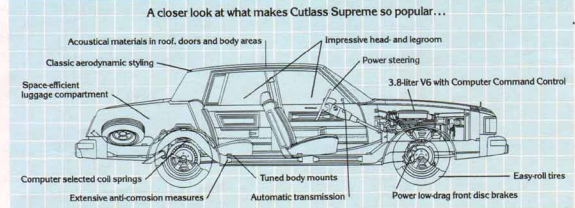
- Engine, 3.8-liter V6, 2-Barrel
- Automatic Transmission
- Choice of Cloth Trim in Four Colors, Vinyl in One Color
- Wall-to-Wall Carpeting including Cargo Area

CUTLASS SUPREME:

- AVAILABLE EQUIPMENT:**
- 6-Way Power Seat Adjuster, Driver Side
 - Standard Bench
 - Reclining Seat Back, Manual (Passenger Side)
 - Contour Bucket Front Seat
 - Divided Bench Front Seat with Individual Controls
 - Power Door Locks
 - Power Tailgate Lock Release (Cruiser)
 - Soft-Ray Tinted Glass
 - Power Side Windows (Available with Power Rear Door Vents for Sedans and Cruiser)
 - Power Trunk-Lid Lock Release
 - Lower Body Side Moldings
 - Auxiliary Floor Mats with Carpet Inserts
 - Deluxe Luggage Compartment Trim and Spare Tire Cover
 - Bright Door-Edge Guard Moldings
 - Full Vinyl Rooftop Coverings (Sedans)
 - Landau Vinyl Rooftop (Cpe.)
 - Pulse Wiper System

- Electric Sliding Glass Sunroof (Cpe) (Reduces headroom slightly)
- Removable Glass Roof Panels (Cpe.)
- Electric Rear Window Defogger
- Air Conditioner - Four Season or Automatic Temperature
- Sail Panel Opera Lamps (Sedans)
- Dome and Reading Lamp Comb.
- Remote Control Outside Rearview Mirrors
- Sport Console with Transmission Shifter (Bucket Seats required, Cpe.)
- Illuminated Vinyl Vanity Mirror
- Body Accent Color Stripes
- Limited Slip Differential
- Engine Block Heater
- Cruise Control with Resume Feature
- Custom Sport Steering Wheel
- Body Side and Tailgate Wood Grain Vinyl Panels (Cruiser)
- Locks for Tire and Rear Stowage Compartment Doors (Cruiser)
- Rooftop Luggage Carrier (Cruiser)
- Rear Window Air Deflector (Cruiser)
- Tilt-Away Steering Wheel

- Super Stock Wheels, Color-Keyed
- Wire Wheel Discs with Locks
- Puncture-Sealing Tires
- Tires, P205/70R14 Steel Belted Radial-Ply White-Stripe
- Tires, P195/75R14 Steel Belted Radial-Ply White-Stripe
- Tires, P205/70R14 Steel Belted Radial-Ply Blackwall with Raised White Letters
- Convenience Group including Lamps, Visor Vanity Mirror and Chrome Tones
- Tungsten Halogen Headlamps
- High Capacity Battery
- Digital or Regular Quartz Clock
- Instrument Panel Gauge Clusters
- Trip Odometer (Included in Cluster)
- External Lamp Monitors
- Two-Tone Paint Scheme (Exc. Cruiser)
- Firm Ride and Handling Package
- High-Capacity Delcotron
- Heavy-Duty Wheels
- 5-Wire Trailer Wiring Harness
- High-Capacity Cooling Systems
- Radios and Tape Players (See Page 30)



CUTLASS SUPREME/CRUISER POWER TEAMS	Liter Type	Overall Length (in.)	Wheelbase (in.)	Shoulder Height (in.)	Front (in.)	Rear (in.)	Front (in.)	Rear (in.)	Overall Length (in.)	Wheelbase (in.)	Shoulder Height (in.)	Front (in.)	Rear (in.)
3.8 V6	4.3 V6†	200.4	108.1	56.6	55.7	56.6	55.7	200.4	108.1	56.6	55.7	56.6	55.7
2-Barrel Carburetion	2-Barrel Diesel	200.4	108.1	56.6	55.7	56.6	55.7	200.4	108.1	56.6	55.7	56.6	55.7
4-Barrel Carburetion	4-Barrel Diesel	200.4	108.1	56.6	55.7	56.6	55.7	200.4	108.1	56.6	55.7	56.6	55.7
3-Speed Automatic	3-Speed Automatic	200.4	108.1	56.6	55.7	56.6	55.7	200.4	108.1	56.6	55.7	56.6	55.7

†Coupe and Sedan models only. ‡Cruiser models only.

*See EPA mileage estimates in accompanying Fuel Economy Estimate. †Engine Supplement Sheet

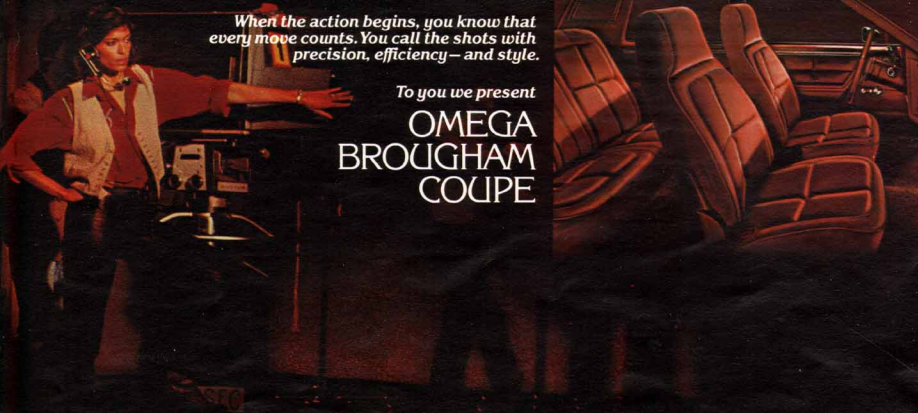
*You know the choices. But
you look for that one solid investment
you can be comfortable with. It's the
dependable blue chip for you.*

To you we present
**OMEGA
BROUGHAM
SEDAN**



When the action begins, you know that every move counts. You call the shots with precision, efficiency—and style.

To you we present
**OMEGA
BROUGHAM
COUPE**



Omega, with front-wheel drive. Complete with Oldsmobile quality—and style! Great style, in fact, with a fresh, graceful new front end—and aerodynamic look. New refined look in back, too.

In between, lots of room and

comfort, thanks in part to the transverse engine and front-wheel drive. Lots of mileage, too,* with the standard 2.5-liter L4 engine which features electronic fuel injection. It replaces the traditional carburetor and provides electronically metered

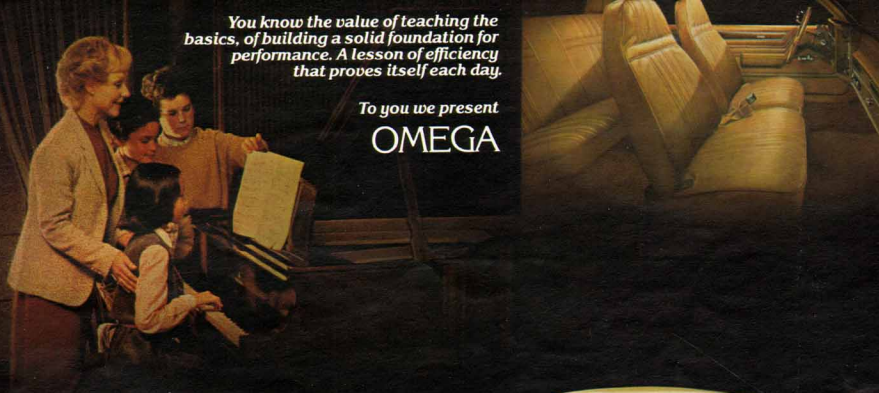
air and fuel for impressive economy. A 2.8-liter V6 is available. As for driving, Olds Omega does that with style. Its front-wheel drive puts the engine weight over the wheels that both power and steer you. And that means impressive

traction—in snow, rain or sand. Parking is made easy for you with rack-and-pinion power steering. And the ride is pure pleasure. In fact, you're going to like your new Omega so much you'll want it to stay looking good. We do, too.

*See EPA mileage estimates in accompanying Fuel Economy Estimate/Engine Supplement Sheet.

You know the value of teaching the basics, of building a solid foundation for performance. A lesson of efficiency that proves itself each day.

To you we present
OMEGA



So every Omega receives extensive anti-corrosion treatments to help keep them looking great. Other built-in values include: power front low-drag disc brakes, full-wheel covers, headlamp-on warning, halogen high-beam headlamps, Delco AM radio

(may be deleted for credit) and more. Omega—a great way to meet the needs of today—with room to do it with style! Take a test drive. **Omega Brougham.** The most luxurious Omega—with tufted, full-foam seats in rich, soft velour;

fold-down front armrest and deluxe steering wheel standard. **Omega.** The room and comfort you need—at a price you'll like. **Omega ES.** Coupe or sedan with a look all its own. Package includes resilient front end, blacked-out

moldings, wrap around bumpers, sport wheels, steel-belted radials, rallye suspension, dual sport mirrors, special brushed metal instrument panel applique, sport steering wheel and more. A high-output V6 is available *only* on Omega ES.

The crowd goes its way. And you go yours—with spirit and efficiency—setting your own pace in grand touring style.

To you we present
OMEGA ES

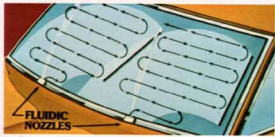




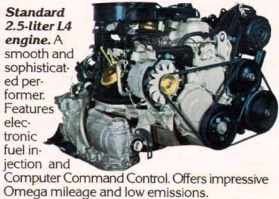
Omega instrument panel, with Butterfly Walnut grain vinyl. Deluxe steering wheel is standard on Brougham models.



Vista Vent sunroof available. A tinted glass panel that pops open for sun, fun and air. A great way to top off your Omega.



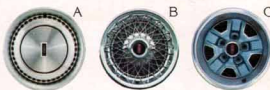
Fluidic washer/wiper system. The windshield receives an evenly distributed spray for wide coverage and good cleaning.



Standard 2.5-liter L4 engine. A smooth and sophisticated performer. Features electronic fuel injection and Computer Command Control. Offers impressive Omega mileage and low emissions.



Electronic fuel injection. Standard on the 2.5-liter L4 engine. This new system replaces the traditional carburetor and provides electronically precise metering of air and fuel for impressive Omega mileage.*



Omega wheel trims. (A) Deluxe wheel discs are standard. Available: (B) Wire wheel discs with locks. (C) Super stock wheels. Polycast sport wheels (not shown) are available on Omega ES models only.



New fuse block location. Now it's right inside the glove compartment for your convenience. Just pop off the cover plate for service access.



Extensive anti-corrosion measures. Includes galvanized metals, front fender liners, plastisols, sealers, waxes and zinc-rich primers. All to help keep Omega looking good.

OMEGA/OMEGA BROUGHAM STANDARD EQUIPMENT

- Chassis and Body**
- Computer Command Control
 - Electronic Fuel Injection
 - High-Energy Ignition System
 - Delcootron
 - Power-Assisted Rack-and-Pinion Steering
 - Low Drag Power Front Disc Brakes
 - MacPherson Strut Front Suspension
 - Integral Body/Frame Construction
 - Front Cradle Strut Engine Mounting
 - Transverse-Mounted Engine with Front-Wheel Drive
 - Space-Efficient Trunk
 - Compact Spare Tire
 - Bright Side Window Frames
 - Dual Fluidic Windshield Washers
 - Easy-Rolling P185/80R13 Glass-Belted Radial-Ply Blackwall Tires
 - Deluxe Wheel Discs
 - Rearview Mirror, Driver Side

- Interior:**
- Full-Foam Seat Construction
 - Armrests, Front and Rear
 - Cut-Pile Carpeting, Wall-to-Wall
 - Simulated Butterfly Walnut Grain Instrument Panel Accents
 - Interior Operated Hood Lock Release
 - Headlamp-On Warning Cigar Lighter
 - Inside Day/Night Rearview Mirror
 - Deluxe Seat Belts, Color-Matched to Interior
 - Flo-Thru Ventilation
 - Deluxe Steering Wheel (Brougham)
 - AM Pushbutton Radio with Dual Front Speakers and Fixed Mast Fender Antenna (may be deleted for credit)

STANDARD EQUIPMENT BY MODEL

- Omega Coupe and Sedan:**
- Engine, 2.5-liter L4 with Electronic Fuel Injection
 - 4-Speed Manual Transmission with Floor Shift
 - Bench Seats in choice of Cloth or Vinyl
 - Lamplight Automatic Front Doors
 - Rocker Panel Moldings (Sedan)
 - Wheel-Opening Moldings (Sedan)
 - Deluxe Wheel Discs
 - Tires, P185/80R13 Glass-Belted Radial-Ply Blackwall

- Omega Brougham Coupe and Sedan:**
- Engine, 2.5 liter L4 with Electronic Fuel Injection
 - 4-Speed Manual Transmission with Floor Shift
 - Custom Sport Bench Front Seat with Center Armrest
 - Carpeted Lower Door Panels
 - Lower Body Side Moldings
 - Hood Center Moldings and Stand-Up Ornament
 - Pillar Applique Molding (Sedan)
 - Specific Sail Panel Ornament and Identification
 - Deluxe Steering Wheel

- Available Omega ES Package:**
- ES2500 with 2.5-liter L4 Engine
 - ES2800 with 2.8-liter V6 Engine
 - Specific Grille with "Soft" Sloping Front End
 - Wraparound Bumpers with Integral Spoof in Car Color
 - Wide Body Side Moldings
 - Bumper Rub Strips
 - Blacked-Out Headlamp and Taillamp Bezels, Window Reveal and Pillar Moldings
 - Instrument Panel Engine Turn Appliques
 - Bright Roof Drip Moldings
 - Sport Mirrors
 - Firm Ride and Handling Package
 - Custom Sport Steering Wheel
 - Steel-Belted Radial-Ply Tires
 - Rally Graphics
 - Available on Omega Brougham Coupe and Sedan.
 - Choice of 4 Exterior Colors, 2 Interior Trims

OMEGA/OMEGA BROUGHAM AVAILABLE EQUIPMENT:

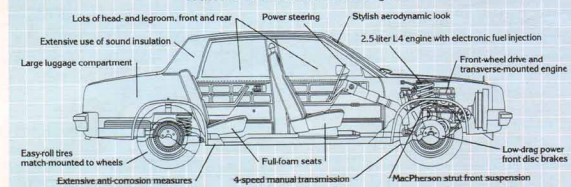
- 6-Way Power Seat Adjuster (Bucket Seat, Driver Side)
- 6-Way Power Seat Adjuster (Bench—Auto, Trans. required)
- Reclining Seat Back/Manual, Passenger Side
- Removable Sunroof, Tempered Glass Panel
- Power Door Locks
- Power Side Windows
- Soft-Ray Tinted Glass
- Contour Front Bucket Seats
- Power Trunk-Lid Lock Release
- Pillar Applique Moldings (Omega Sedan)
- Lower Body Side Moldings (Omega Models)
- Auxiliary Floor Mats with Carpet Inserts
- Bright Roof Drip Moldings (Included with Vinyl Rooftop Coverings)
- Body Side Moldings, Black
- Belt Reveal Moldings (Omega Sedan)
- Bright Door-Edge Guards
- Pulse Wiper System
- Landau Padded Vinyl Rooftop Covering (Coupes)
- Full Vinyl Rooftop Covering (Sedans)
- Four-Season Air Conditioner
- Dome Lamp and Dual Reading Lamp Combination
- Outside Remote Control Mirror, Driver Side
- Sport-Styled Outside Mirrors, Remote Control Driver Side
- Sport-Styled Mirrors, Remote Control Driver and Passenger Side
- Rear Window Defogger
- Sport Console with Floor Shifter (Bucket Seats required)
- Soft-Ray or Regular Quartz Clock
- Body Side Accent Stripes
- Engine Block Heater
- Cruise Control with Resume Feature
- Automatic Transmission
- Custom Sport Steering Wheel
- Super Stock Wheels w/Body Color
- Wire Wheel Discs with Locks
- Tires, P185/80R13 Steel-Belted Radial-Ply Blackwall
- Tires, P185/80R13 Steel-Belted Radial-Ply White-Stripe
- Tires, P205/70R13 Steel-Belted Radial-Ply Blackwall

- Tires, P205/70R13 Steel-Belted Radial-Ply White-Stripe (Ride and Handling Package required)
- Tires, P205/70R13 Steel-Belted Radial-Ply Blackwall with Raised White Letters (Ride and Handling Package required)
- Tires, P185/80R13 Glass-Belted Radial-Ply White-Stripe
- Convenience Group—Lamps, Visor Vanity Mirror and Chime Tones
- High-Capacity Battery
- Digital or Regular Quartz Clock
- Dual Horns
- Instrument Panel Rally Cluster—Includes Tachometer, Trip Odometer, Voltmeter, Temperature Gages
- Trip Odometer
- Bumper Rub Strips and Bumper Guards, Front and Rear
- Two-Tone Paint Schemes (Six combinations to choose from)
- Radios and Tape Players (See Page 30)

SPECIAL AVAILABLE PACKAGES

- **Omega ES Package:** ES2500 with standard 2.5-liter L4 engine, or ES2800 with 2.8-liter V6, 2-bbl. or High-Output 2.8-liter V6

A closer look at front-wheel-drive Omega...



OMEGA POWER TEAMS	Available Engines*	Available Transmissions*	Luggage Capacity	Shoulder Room
Standard Equipped:	Liter Type: 2.8 V6	Auto... Column Mounted Shift	(cu. ft.)... 14.3	front (in.)... 56.3-56.0
Liter/Type: 2.5 L4	Carburetion... 2-Barrel	Standard Transmissions:	(cu. ft.)... 14.6	rear (in.)... 56.3-56.1
Carburetion	Standard Transmissions:	Manual... 4-Speed Floor Shift	(cu. ft.)... 37.2-38.2	front (in.)... 42.2-42.2
Fuel Injection	Manual... 4-Speed Floor Shift	Wheelbase (in.)... 104.9	rear (in.)... 37.4-37.4	rear (in.)... 34.5-35.5

*Available with ES Package only.

*See EPA mileage estimates in accompanying Fuel Economy Estimate, Engine Supplement Sheet.



Tilt-Wheel.

Adjusts to six different driving positions to fit different size drivers. Swings up for easy entry and exit. It can even be adjusted while driving for added comfort on long trips. Try it. You'll like it.



AM-FM stereo radio with cassette and digital clock. Available on Cutlass Ciera.



AM-FM stereo radio (Cutlass Ciera).

DELCO-GM PREMIUM RADIOS	CUTLASS CIERA	CUTLASS SUPREME/CONQUEST	OMEGA
AM Pushbutton	S ¹	A	S ¹
AM/FM Electronically Tuned Cassette with Digital Clock	A	A	
AM/FM Stereo, 8 Track with Digital Clock	A		
AM/FM Stereo, 8 Track		A	
AM/FM Stereo, Cassette and Digital Clock	A		A
AM/FM Stereo, Cassette	A	A	A
AM/FM Stereo with Digital Clock	A	A	A
AM/FM Stereo	A	A	A
AM/FM Monaural	A	A	A

S - Standard A - Available 1 - May be deleted for credit

Reclining front bucket seats. Available for driver and passenger side. Contoured for comfort and support. You'll love them on long trips. Standard on Cutlass Calais.



Diesel V6 or V8. The new 4.3-liter diesel V6 available on all Cutlass coupes and sedans. The 5.7-liter diesel V8 available on Supreme models.



Removable roof panels. This "lift-off" roof gives you the sun, fun and air of a convertible - in a coupe! The tinted glass panels lift out and store in a carrying case. Available on Supreme coupes.



Cruise Control. Lets you select the cruising speed you want, then automatically maintains it. Includes "Resume-Speed" feature.



Digital clock. Precise quartz digital clock to help keep you on time. Large, easy-to-read numerals.



Pulse Wiper System. Lets you set a variety of delay-interval wipes, plus regular low and high speed settings.



Dual sport mirrors. Standard on Calais and Omega ES models. Left side includes remote control. Painted to match body color.



Rear Window Defogger. Electric filaments in the glass defogs the window quickly, silently. Convenient, too.



Illuminated visor vanity mirror. Lights up when cover is opened for your convenience.



Fiber-optic lamp monitor. It signals you when certain exterior lights malfunction.



Halogen headlamps. High-intensity high beams for added light at night. Standard on Calais and Omega models.

Continuous Protection Plan



GM's Continuous Protection Plan offers service protection in addition to that provided by GM's New Vehicle Limited Warranty. Ask your dealer about it. Coverage available only in U.S.A. and Canada.



Power antenna. Now you see it. Now you don't. Automatically extends when radio is turned on, retracts when radio is turned off. Provides sharp reception for both AM and FM.

Tempmatic air conditioner. Automatically controls the temperature, winter and summer (Supreme only). **Four-Season air conditioner** also available. Both dehumidify and filter the air.



A word about assembly, components and optional equipment in these Oldsmobile products: The Oldsmobiles described in this catalog are assembled at facilities of General Motors Corporation operated by Oldsmobile Division and General Motors Assembly Division. These vehicles incorporate thousands of different components produced by various divisions of General Motors and by various suppliers to General Motors. From time

to time during the manufacturing process, it may be necessary, in order to meet public demand for particular vehicles or equipment, or to meet federally mandated emissions, safety and fuel economy requirements, or for other reasons, to produce Oldsmobile products with different components or differently sourced components than initially scheduled. All such components have been approved for use in Oldsmobile products and will provide the quality

performance associated with the Oldsmobile name. With respect to extra-cost optional equipment, make certain you specify the type of equipment you desire on your vehicle when ordering it from your dealer. Some options may be unavailable when your car is built. Your dealer receives advice regarding current availability of options. You may ask the dealer for this information. GM also requests the dealer to advise you if the option you ordered is unavailable. We

suggest that you verify that your car included the optional equipment you ordered or if there are changes, that they are acceptable to you.

Standard accident-avoidance features: Side marker lights and reflectors □ Parking lamps that illuminate with headlamps □ Four-way hazard warning flasher □ Backup lights □ Lane change feature in direction signal control □ Windshield defrosters, washer and dual speed wipers □ Vinyl-edged inside

mirror □ Outside rearview mirror □ Dual master cylinder brake system with warning light □ Starter safety switch □ Dual action safety hood latches. **Standard built-in anti-theft features:** Audible anti-theft ignition key reminder □ Anti-theft steering column lock □ Inside hood release. **Standard occupant-protection features:** Manual lap/shoulder belts with pushbutton buckles for driver and right front passenger (driver side includes visual

and audible warning system) □ Manual lap belts with pushbutton buckles for rear passenger positions. Also the center front (when applicable) □ Energy-absorbing steering column □ Passenger guard door locks □ Safety door latches and stamped steel hinges □ Folding seat back latches □ Energy-absorbing instrument panel and front seat back tops □ Laminated windshield/tempered side and rear glass □ Safety armrests □ Identification symbols for controls, displays.

*With 26 beautifully engineered
Olds models, there's still room to
do it with style.*

Toronado Brougham
Ninety-Eight Regency Brougham Sedan
Ninety-Eight Regency Sedan
Ninety-Eight Regency Coupe
Delta 88 Royale Brougham Sedan
Delta 88 Royale Brougham Coupe
Delta 88 Royale Sedan
Delta 88 Royale Coupe
Delta 88 Sedan
Custom Cruiser
Cutlass Ciera Brougham Sedan
Cutlass Ciera Brougham Coupe
Cutlass Ciera LS Sedan
Cutlass Ciera LS Coupe
Cutlass Ciera Sedan
Cutlass Ciera Coupe
Cutlass Supreme Brougham Sedan
Cutlass Supreme Brougham Coupe
Cutlass Calais Coupe
Cutlass Supreme Sedan
Cutlass Supreme Coupe
Cutlass Cruiser
Omega Brougham Sedan
Omega Brougham Coupe
Omega Sedan
Omega Coupe

