

PONTIAC

Road Cars

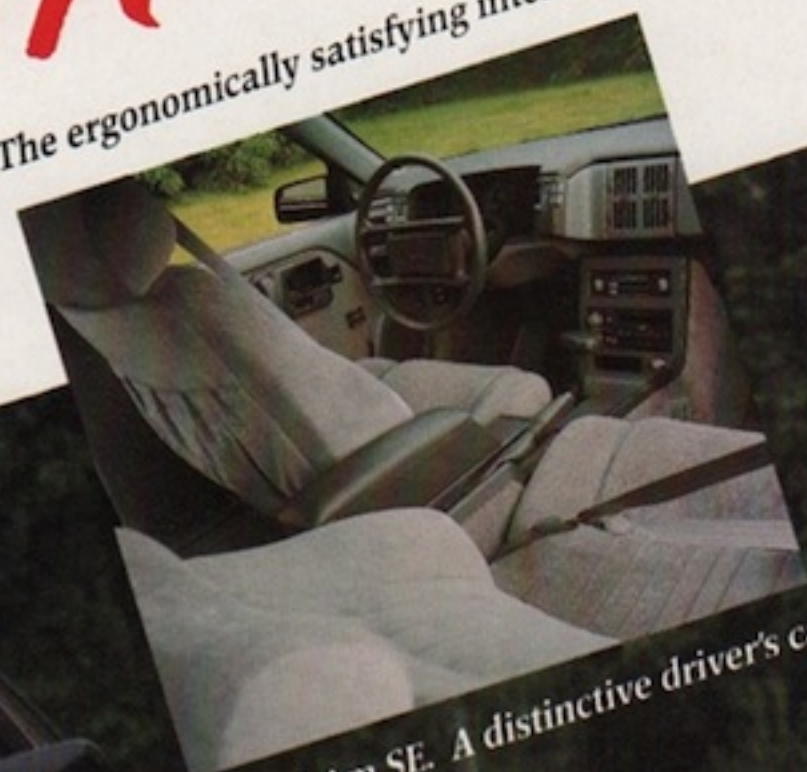
1988



The biggest news on Grand Am for '88 can be summed up in one word: power. Because all Grand Am models can be equipped with an available 2.3 liter Quad 4 DOHC 16-valve four-cylinder engine. This technologically sophisticated powerplant optimizes performance for the Grand Am it's teamed with. Standard on the driving enthusiast's SE is the 2.0 liter overhead cam multi-port fuel-injected turbocharged 4-cylinder engine. It's coupled with a standard 5-speed manual or the available 3-speed automatic transmission. Grand Am and Grand Am LE receive new body-colored grilles, new interior cloth treatments, and standard AM/FM stereo sound systems.*

Grand Am

The ergonomically satisfying interior of SE.



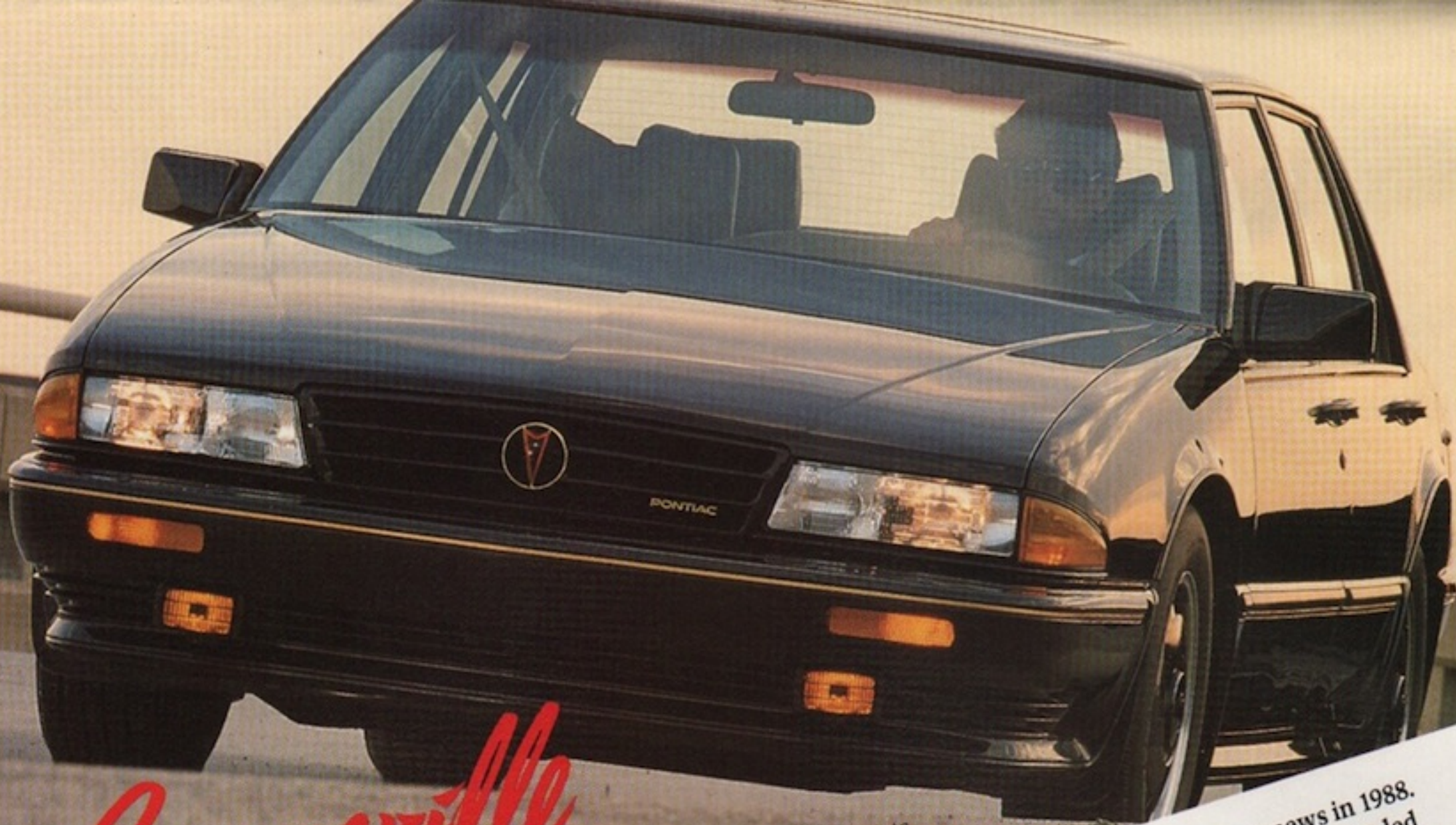
Grand Am SE. A distinctive driver's car.



Hi-Tech Turbo aluminum wheels are available on Grand Am. (Custom wheel covers shown.)

Models	Grand Am Coupe & Sedan, Grand Am SE Coupe & Sedan.
Engines	2.0L 4-cyl: 165 hp. turbocharged with multi-port fuel injection. 2.3L Quad 4 16-valve 4-cyl: 150 hp. with multi-port fuel injection. 2.5L 4-cyl. Tech IV: 98 hp. with electronic fuel injection.
Transmissions	5-speed manual or 3-speed automatic.
Brakes	Front disc/rear drum.
Suspensions	WS6 Special Performance with P215/60R14 Goodyear Eagle GT+4 tires Standard with P185/80R13 tires.

NOTE: Some features available at extra cost. For more information about available features and options, please ask your dealer for a 1988 Pontiac catalog.
*Radio may be deleted for credit except when option group is ordered.



Bonneville

Bonneville SSE: Specific monochromatic paint scheme, identification, aero ground effects, Aero-Lite wheels, mirrors and a reputation waiting to become a legend.

Bonneville was big news in '87—and it's even bigger news in 1988. Especially the new SSE model. It's a monochromatic, Euro-styled road sedan with enough power and features to run with anything from The Continent. Anti-lock brakes, electronic ride control, specific WS6 suspension, a 3.8 liter SFI 3800 V6 and a lot more are standard equipment. The same hot engine is also standard on Bonneville SE along with Rally Tuned suspension, a leather-wrapped wheel and full gauges. The LE model gets wide bodyside moldings, Pallex cloth seats and dual sport mirrors for '88. No doubt about it. Any Bonneville's bound to win friends and influence people.



Bonneville SE sports standard Tri-port cast wheels, optional lower body accent paint and more.

Models	Bonneville LE, Bonneville SE, Bonneville SSE.
Engines	3.8L SFI 3800 V6: 165 hp., with sequential fuel injection. 3.8L V6: 150 hp., with sequential fuel injection.
Transmission	4-speed automatic.
Brakes	Power front disc/rear drum. Anti-lock system with SSE only.
Suspensions	Standard with P205/75R14 tires. Y99 Rally Tuned with P215/65R15 Goodyear Eagle GT+4 tires. WS6 Special Purpose with P215/60R16 Goodyear Eagle GT+4 tires (SSE only).

NOTE: Some features available at extra cost. For more information about available features and options, please ask your dealer for a 1988 Pontiac catalog.

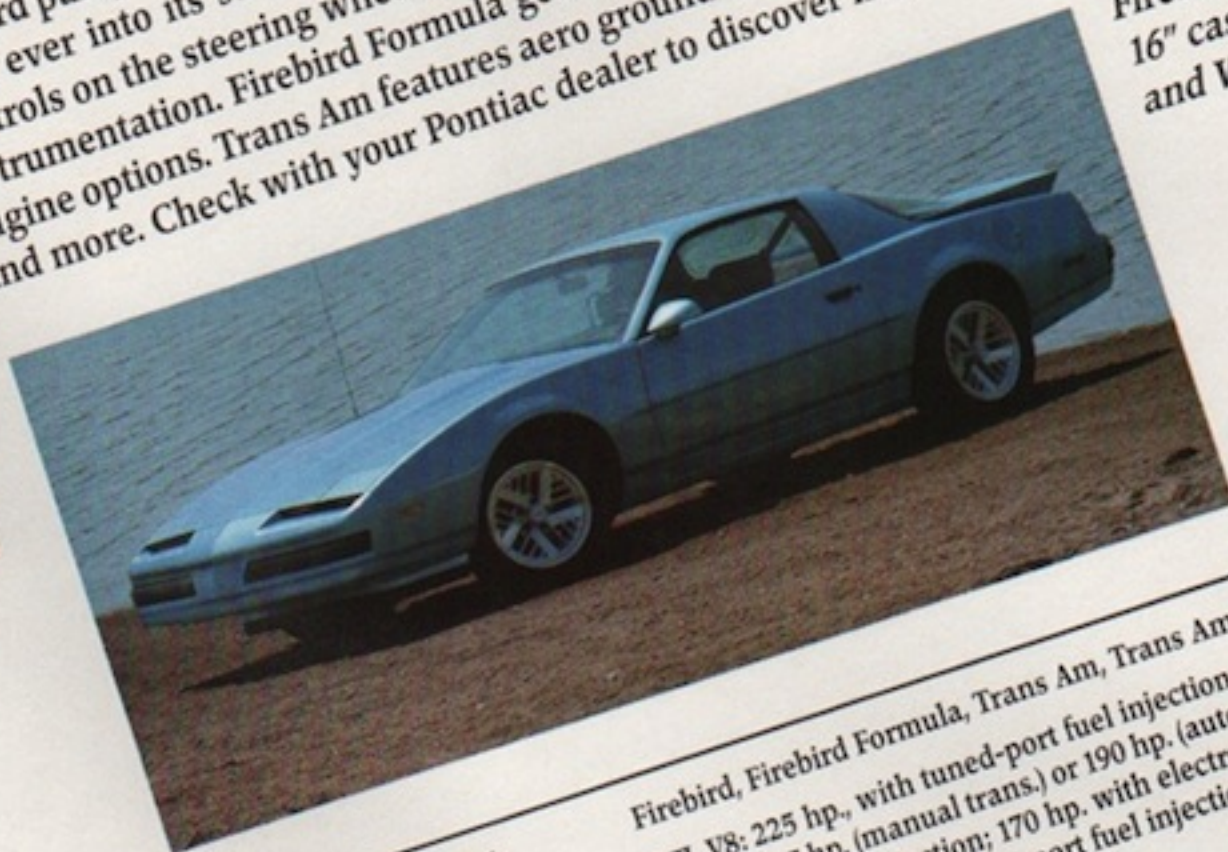


Inside, SSE features 10-way power adjustable articulating front seats and duplicate radio controls on the steering wheel hub.

Firebird



Power articulated front bucket seats and duplicate, wheel-mounted radio controls are standard on GTA.



Models
Engines

Firebird, Firebird Formula, Trans Am, Trans Am GTA.
 5.7L V8: 225 hp., with tuned-port fuel injection.
 5.0L V8: 215 hp. (manual trans.) or 190 hp. (auto. trans.) both with
 tuned-port fuel injection; 170 hp. with electronic fuel injection.
 2.8L V6: 135 hp., with multi-port fuel injection.

Transmissions
Brakes
Suspensions

5-speed manual or 4-speed automatic.
 4-wheel disc or front disc/rear drum.
 WS6 Special Performance with P245/50VR16 Goodyear Eagle
 "gatorback" tires.
 Y99 Rally Tuned with P215/65R15 Goodyear Eagle GT tires.

NOTE: Some features available at extra cost. For more information about available features and options, please ask your dealer for a 1988 Pontiac catalog.

Trans Am GTA gets more horsepower than ever for 1988.

Firebird pumps the driving excitement up to new levels in 1988: Trans Am GTA jams more horsepower than ever into its 5.7 liter V8, then adds power articulated front bucket seats and duplicate radio controls on the steering wheel hub. Firebird has 15" cast aluminum wheels standard, plus full gauge instrumentation. Firebird Formula gets special identification, WS6 suspension and the full range of engine options. Trans Am features aero ground effects, hood louvers, neutral density tail lamp lenses and more. Check with your Pontiac dealer to discover how much.

Firebird Formula features 16" cast aluminum wheels and WS6 suspension.

STE's hi-tech interior features duplicate radio controls on the steering wheel.



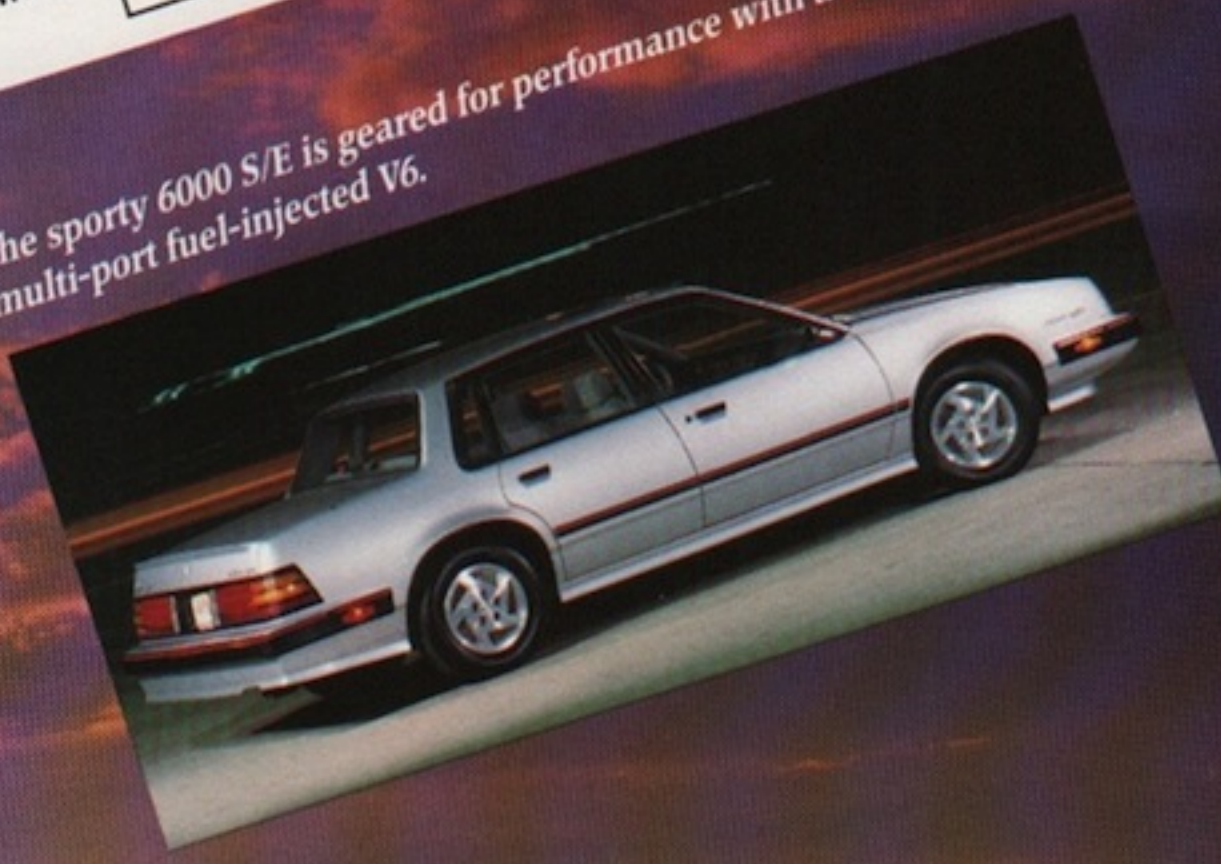
The "high-tech" Pontiac 6000 series moves into '88 with an array of impressive engineering and styling features. The top-of-the-line STE, with its potent 2.8 liter V6 engine, features a long list of standards including anti-lock brakes and new 15" aluminum wheels with P195/70R15 Eagle GT+4 all-season radial tires. The S/E will get new Metrix cloth covering its reclining bucket seats, plus a long list of standard features including an AM/FM stereo radio,* a leather-wrapped steering wheel and tinted glass. The 6000 Sedan receives new standard Pallex seat fabric while 6000 LE gets redesigned contoured seats with London/Empress fabric.

Cast aluminum wheels are a part of STE's aggressive good looks.

Models	Pontiac 6000 Sedan & Wagon, 6000 LE Sedan & Wagon, 6000 S/E Sedan & Wagon, 6000 STE Sedan.
Engines	2.8L V6: 125 hp. with multi-port fuel injection. 2.5L 4-cyl. Tech IV: 98 hp. with electronic fuel injection.
Transmissions	5-speed manual, 4-speed automatic or 3-speed automatic.
Brakes	Front disc/rear drum. 4-wheel anti-lock disc (STE only).
Suspensions	STE Specific with P195/70R15 Goodyear Eagle GT+4 tires. Y99 Rally Tuned with P195/70R14 Goodyear Eagle GT+4 tires.

NOTE: Some features available at extra cost. For more information about available features and options, please ask your dealer for a 1988 Pontiac catalog.
*Radio may be deleted for credit except when option group is ordered.

The sporty 6000 S/E is geared for performance with a 2.8 liter multi-port fuel-injected V6.



Pontiac
6000

LeMans



Custom wheel covers and flush-mounted halogen headlamps are standard on the LeMans Aerocoupe.



The LeMans SE Sedan gives you 4 doors, and the biggest trunk of any Pontiac.

Models	LeMans Aerocoupe (Value Leader), Aerocoupe, Sedan and SE Sedan.
Engine	1.6 liter 4-cyl.: 74 hp., with electronic fuel injection.
Transmissions	4-speed manual (Value Leader only), 5-speed manual or 3-speed automatic.
Brakes	Power front disc/rear drum.
Suspension	Standard with P175/70R13 all-season radial tires.

NOTE: Some features available at extra cost. For more information about available features and options, please ask your dealer for a 1988 Pontiac catalog.

The new imported Pontiac LeMans is proof that a functional car can also be fun to drive. Among its long list of standard features are analog instrumentation, halogen headlamps, side and rear window defoggers, a hidden roof luggage rack mount, and lots of storage space—Sedans have the largest trunk of any Pontiac. On the sporty side, you'll find a fuel-injected engine, power-matched transmission, smooth, aerodynamic lines, and wide bodyside moldings...all standard.



Standard cloth bucket seats are fully reclining.

Refined design is the essence of the '88 Sunbird. Coupes have a new roofline and all Sunbirds have a new rear design that's bound to catch attention. There are six models altogether, including a turbocharged Coupe and Convertible. Each comes standard with a 5-speed gearbox and rack-and-pinion steering. Inside, reclining front bucket seats, monotone Pallex cloth upholstery and a Delco ETR® AM/FM stereo radio are also standard.*



Sunbird GT Turbo Convertible.
Sunbird GT Coupe features sleek new styling.

Models	Sunbird Sedan, Sunbird SE Coupe, SE Sedan and Wagon, Sunbird GT Coupe and Convertible.
Engines	2.0L 4-cyl.: 165 hp., turbocharged with multi-port fuel injection. 2.0L 4-cyl.: 96 hp., with electronic fuel injection.
Transmissions	5-speed manual or 3-speed automatic.
Brakes	Power front disc/rear drum.
Suspensions	WS6 Special Performance with Goodyear Eagle GT+4 P215/60R14 tires. Y99 Rally Tuned with Goodyear Eagle GT+4 P215/60R14 tires. Standard with P185/80R13 tires.

NOTE: Some features available at extra cost. For more information about available features and options, please ask your dealer for a 1988 Pontiac catalog.
*Radio may be deleted for credit except when option group is ordered.



Reclining front bucket seats are standard.



Sunbird

Fiero



Fiero Formula's hot for '88 with V6 power, WS6 suspension, and a new mid-year yellow color.

If you're into leather, you'll love the steering wheel, shift knob and seating areas of Fiero GT's optional seats.



Fiero is the one and only. Well, almost. There are three models for 1988: Fiero Coupe, Fiero Formula, and Fiero GT. The Coupe starts with the famous Tech IV engine and that classic body style—then leaves all the fun up to you. Use the option list to build the Fiero of your dreams. The Fiero Formula gets you off to a healthy start by including the 2.8 liter V6 and WS6 Special Performance suspension. The GT takes you from there and adds its distinctively slick body design and a list of goodies too big to print here. You'll just have to visit your Pontiac dealer's to find out.

PONTIAC

Road Cars

1988



Opposite cover: IMSA race driver Bob Earl wrings out the all-new suspension of Fiero GT at the famous Laguna Seca race course.

- Models
- Engines
- Transmissions
- Brakes
- Suspensions

Fiero Coupe, Fiero Formula, Fiero GT
 2.8L V6: 135 hp., with multi-port fuel injection.
 2.5L 4-cyl Tech IV: 98 hp., with electronic fuel injection.
 5-speed manual or 3-speed automatic.
 4-wheel disc.

Y99 Rally Tuned with P195/70R14 Goodyear Eagle GT+4 tires.
 WS6 Special Performance with P205/60R15 front and P215/60R15 rear Goodyear Eagle GT+4 tires.

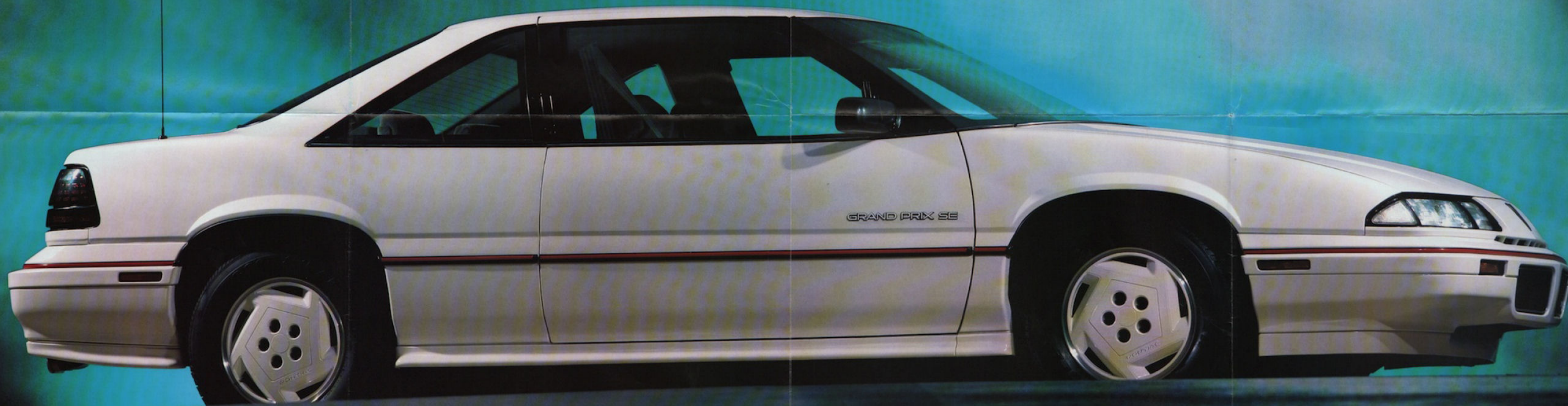
NOTE: Some features available at extra cost. For more information about available features and options, please ask your dealer for a 1988 Pontiac catalog.



We Build Excitement

LET'S GET IT TOGETHER. BUCKLE UP.
WE LEARN EXCITEMENT IN THE U.S.A. ©1987 GM CORP.

*The New
Grand Prix*



The new Grand Prix will not be available until mid-year.