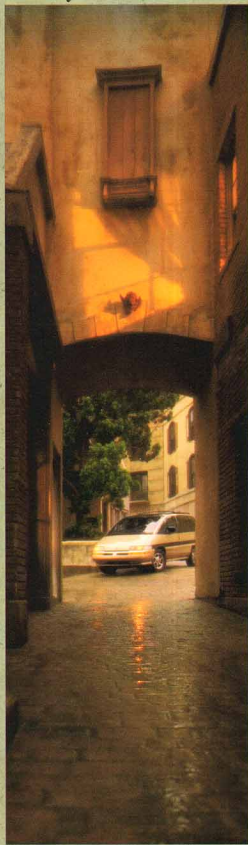


1994

SILHOUETTE

By Oldsmobile



S i l h o u e t t e

OUR EDGE. YOUR EDGE. *Three*



THE SAFETY FACTOR. *Five*



CONTROL CENTER. *Nine*



SPECIAL EDITION. *Ten*



SPECIFICATIONS. *Twelve*



The 1994 Oldsmobile Silhouette presents all the spacious versatility of a very capable minivan, and all the refined comfort and convenience of a true luxury sedan. Silhouette is, after all, an Oldsmobile. And that means superior performance and a high level of standard features. The bottom line? Silhouette's carlike qualities make it a minivan that takes good care of people, as well as cargo. But we don't believe building a great minivan like Silhouette is enough. You ought to get even more for your money. So we offer a value-priced Silhouette Special Edition equipped with our most popular options. And we support you with the Oldsmobile Edge—our comprehensive customer care program. The objective is simple: your complete satisfaction. You have a choice when it comes to minivans. We invite you to read on and see why we think you should consider Silhouette.



YOUR EDGE BENEFITS INCLUDE:

Guaranteed Satisfaction.

Not satisfied with your new Silhouette? Bring it back within 30 days or 1,500 miles, whichever comes first. You'll receive full credit toward the SmartLease or purchase of another new Oldsmobile.

Roadside Assistance.

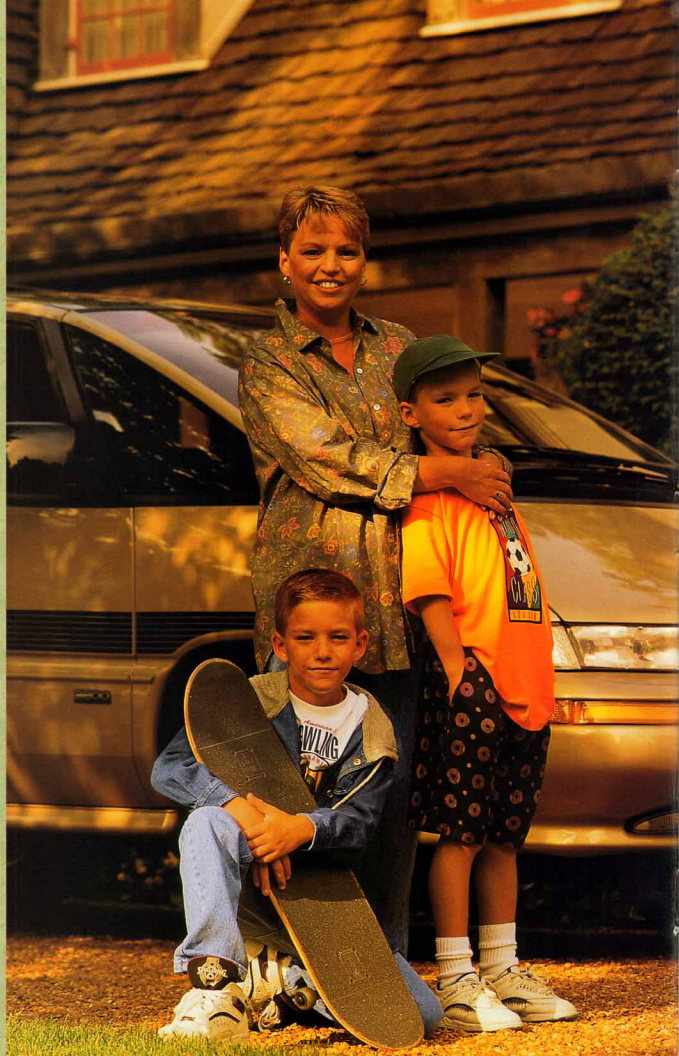
24 hours a day, 365 days a year, during the warranty period, help at no charge is a toll-free phone call away through our network of over 15,000 emergency facilities nationwide.

Bumper-to-Bumper Warranty.

Every part of your new Silhouette is covered, except tires (they have their own warranty), for three years or 36,000 miles, whichever comes first, with no deductible.

Courtesy Transportation.

For same-day warranty service, we'll give you a one-way shuttle up to 10 miles. For overnight warranty service, we'll give you a loaner or reimburse you up to \$30 a day for transportation.



OUR EDGE. YOUR EDGE.

When you leave a dealership in your new minivan, you don't want to be forgotten. That won't happen with Oldsmobile. Just ask Kathy Lindt. She found out about the Oldsmobile Edge and told us about her experience in an unsolicited letter: "Today I locked my car and house keys in my Silhouette. I called the Oldsmobile toll-free number for

Sure, I buy it and then it's like
... "Who are you?"

assistance. I had my two children with me and I was worried I wouldn't get assistance quickly. But that was not the way it turned out. Your phone operator, Elaine, was so friendly and efficient. She reached a locksmith who was there in a short time. I was really impressed with your road service. Thanks for working so hard to do a great job." Not bad, when all Mrs. Lindt really expected was a great minivan, which, of course, she got. And, of course, we gave her a little more.

Letter edited for length and clarity only. Complete letter on file.



Edge benefits, listed on page 2, are included with every Silhouette at no extra charge. For details, please see any of our 3,000 Oldsmobile dealers across the country or call 1-800-442-OLDS.

Kathy Lindt and her boys, Jason and Kelly, of York, Pennsylvania, were stuck when she locked her car and house keys inside her Silhouette. Not to worry, Oldsmobile had the situation well in hand.

SILHOUETTE SAFETY
FEATURES INCLUDE:

- Driver-side air bag
- Anti-lock brakes
- Available integrated dual child safety seats
- Sliding door child-security lock
- Unified steel spaceframe construction
- Rear window wiper/washer
- Rear and side window defoggers
- High-mounted taillamps



Silhouette in Malachite Metallic.

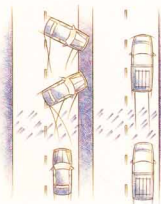


THE SAFETY FACTOR.



Silhouette has a standard driver-side air bag. Remember, always wear safety belts even with an air bag.

Safety matters. Particularly in a minivan, where the cargo is often exceptionally precious. We want to help you avoid accidents in the first place. And help protect you and your passengers...just in case. So we've given Silhouette the ability to help maintain control on the road, with four-wheel anti-lock brakes, power rack-and-pinion



Standard electronic, four-wheel anti-lock brakes (ABS) help you maintain control by minimizing the chance of wheel lockup and skidding during hard braking.

Okay, now let's talk about something no one wants to think about.



The available integrated dual child safety seats lend an added measure of protection for younger passengers.

steering, front-wheel drive, exceptional visibility and responsive engine power—what you need in reacting to unforeseen hazards. But in the event of the unavoidable, Silhouette helps protect everyone. The space-frame body structure forms a steel cocoon. A driver-side air bag is standard, and integrated dual child safety seats are available. Front and rear crush zones help absorb and guide crash energy away from the passenger compartment. And the interior incorporates flame-retardant fabrics and padded and rounded surfaces. Safety is an integral part of every Silhouette. Once you know it, you don't



An available traction control system helps maintain vehicle stability when accelerating on slippery surfaces.

have to think about it.



Silhouette uses a space-frame steel structure to help protect you and your passengers.



Silhouette interior with seating areas trimmed in available Medium Gray leather.



CONTROL CENTER.



Everyone in a Silhouette stays cool—or warm—with the available rear climate controls.

Make no mistake, Silhouette is a minivan. But it has enough carlike qualities to keep you wondering. You'll find the instrument panel features an analog gauge cluster and controls positioned for minimal distraction. Standard Tilt-Wheel steering adjusts to your personal preference. With the solid 3.1-liter V6 engine, automatic transmis-

Now then, is this a car? A minivan? Or what?

sion and power steering, all standard, city maneuvering or highway cruising is a breeze. And since this is an Oldsmobile, superior comfort is a priority. The ride is smooth. Seats are individually contoured, and the front buckets recline. Air conditioning with front and rear circulation is standard. And extensive acoustical refinements—the result of advanced testing—make Silhouette one of today's quietest minivans. Quiet enough to enjoy the standard AM/FM stereo system. Available steering wheel touch controls allow stereo operation without distraction. An available touring suspension includes electronic load-leveling. For an added touch, power door locks and windows, and cruise control are available. Minivan? Yes. Luxury car? Well, it's not far off.



A GM exclusive, the available power sliding door may be operated up to 30 feet away with an available remote control locking system.



All five rear bucket seats are easy to fold down into tray tables or flat cargo surfaces. Or remove them completely—each weighs only 34 lbs, and no tools are required. How's that for flexibility and versatility?



The available overhead console includes a compass, exterior temperature readout, map lights and compartments for a garage door opener, sunglasses and even snacks.



Musical chairs, anyone? With the rear five seats easily removable, a number of arrangements are possible for almost any seating or cargo need. Remove the seats, and there's a generous 112 cubic feet of cargo capacity to fill.



**SILHOUETTE INTERIOR
FEATURES INCLUDE:**

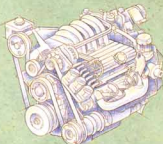
- Driver-side air bag
- TILT-WHEEL steering
- Full analog instrumentation
- Air conditioning
- Front center storage console
- Front reclining bucket seats
- 4-way driver's seat adjuster
- Flexible 7-passenger seating
- 5 easily removable passenger seats
- 112.6-cubic-foot cargo capacity

Silhouette interior with seating areas trimmed in available Medium Gray leather.



SPECIAL EDITION

Buying a minivan should be an enjoyable experience. But comparing models and options and figuring out the costs of various combinations can drive you crazy. So we have a way to make shopping simpler. We've taken our popular Silhouette and equipped it with the luxury features you've told us you want. Then we gave it a special price. We call this our Special Edition. For details, just see your dealer. You could easily pay more and get less. Or you could get a Silhouette Special Edition and a great value. It's your money, but the choice should be clear.



The 170-horsepower, fuel-injected 3800 V6 engine is included in the Silhouette Special Edition. This engine is the same one you'll find in our luxury cars.



- IN ADDITION TO SILHOUETTE'S STANDARD FEATURES, THE SPECIAL EDITION INCLUDES:
- 3800 V6 engine
 - Electronic 4-speed automatic transmission
 - Cruise control
 - Power Windows
 - Power door locks
 - Remote control locks
 - AM/FM stereo with cassette
 - Overhead storage console
 - Roof rack luggage carrier

Model	Silhouette
Standard and Optional Features	
Driver-side air bag	S
Anti-lock brakes	S
Air conditioning	S
7-passenger seating: front reclining buckets with armrests, plus 3 center and 2 rear modulator seats	S
Lower center console with locking storage and dual cup holders	S
Front and rear lap-and-shoulder safety belts, outboard positions, plus center passenger lap belt	S
Rear and side window defoggers	S
TILT-WHEEL, adjustable steering column	S
Unitized steel spaceframe construction	S
Pulse wipers	S
Rear window wiper/washer	S
Composite body panels	S
Base-coat/clear-coat paint	S
Sliding door child-security lock	S
8-stage analog instrument cluster	S
15" aluminum wheels	S
All-season radial BSW tires	S
Solar-treated windshield	S
Soft-Ray tinted windows	S
Fold-away outside dual power mirrors	S
Hydraulically assisted rear lift gate	S
Lift-gate dual cargo lamps	S
Coveredvisor vanity mirrors	S
Carpeted floor and lower door panels	S
Carpeted floor mats	S
Body side protection molding	S
Fla-thru ventilation	S
Auxiliary rear power outlet	S
Convenience package: automatic programmable power door locks, power windows and cruise control	O
Deep-tint solar privacy glass (behind front doors)	O
Remote control locks	O
Rooftop luggage carrier	O
Convenience net	O
Leather seating areas	O
Power driver's seat	O
Auxiliary rear air conditioning	O
Deluxe black roof point	O
Engine block heater	O
Steering wheel touch controls for audio system	O
Power sliding door	O
Pop-up sunroof	O
Traction control system	O
Integrated dual child seats	O
Towing package (3,000 lbs.), including engine oil cooler, transmission cooler and five wire electrical harness	O



Silhouette

Wheels



15" aluminum wheel. Standard.



An inflator kit, part of the available touring suspension package, has a pressure gauge and attachments for inflating tires, tubes, balls and almost anything else.



An available sunroof gives a pleasantly airy outlook to family travel.

Model	Silhouette
Audio Systems	
AM/FM stereo	S
AM/FM stereo with cassette	O
AM/FM stereo with cassette and steering wheel touch controls	O
AM/FM stereo with compact disc player	O
Integrated rooftop antenna	S

Engineering Features	Silhouette
Power front disc/rear drum brakes	S
Power rack-and-pinion steering	S
MacPherson strut front/variable-rate coil spring rear suspension	S
Touring suspension including automatic leveling control, special steering ratio, touring tires and air inflation kit	O
3.1-liter V6 engine with 3-speed automatic transmission	S
3800 V6 engine with 4-speed automatic transmission	O

Powertrain Specifications	Silhouette
Engine	3.1 Liter V6
Displacement	3.1 liter (189 cu. in.)
Engine type	V6
Horsepower	120 @ 4200
Torque	175 @ 2200
Compression ratio	8.5:1
Fuel management	Electronic injection

Engine	3800 V6
Displacement	3.8-liter (231 cu. in.)
Engine type	V6
Horsepower	170 @ 4800
Torque	225 @ 3200
Compression ratio	9.0:1
Fuel management	Sequential port injection

Dimensions	Silhouette
Wheelbase (in.)	109.8
Track, front/rear (in.)	59.2/61.4
Tire size (std.)	P205/70R15
Wheel size (std.)	15 x 6
Brake type, front/rear	Disc/Drum
Fuel tank (gals.)	20.0
Length (in.)	194.2
Width (in.)	73.9
Height (in.)	65.7
Weight, curb (lbs.)	3689
Headroom, front/middle/rear (in.)	35.7/35.6/34.0
Legroom, front/middle/rear (in.)	40.7/33.1/34.1
Shoulder room, front/middle/rear (in.)	60.6/62.3/62.2
Seating capacity	7
Cargo capacity (cu. ft.)	112.6
Front turning diameter, curb to curb (ft.)	43.1

Cargo Area Dimensions	Silhouette
Minimum horizontal distance from top of rear of front seat back to inside of tailgate (in.)	70.5
Minimum distance between wheelhouses at floor level (in.)	40.2
Rear-end opening width at belt (in.)	50.5
Rear opening height (in.)	41.3

Option Packages	Silhouette
For ordering convenience, select one of the packages shown below.	15B 15C
Convenience package: automatic programmable power door locks, power windows and cruise control	• •
Convenience net	• •
Deep tint solar privacy glass (behind front doors)	• •
Overhead console with 3 storage compartments, digital compass, outside temperature readout and map lights	• •
Rooftop luggage carrier	• •
Remote control locks	• •
AM/FM stereo with cassette	• •
Power sliding door	• •
3800 V6 engine with 4-speed automatic transmission	• •
Power driver's seat	• •
Steering wheel touch controls for audio system	• •

S = Standard O = Optional
 *Includes passengers, trailer, cargo and equipment.

Exterior Colors

Light Gray Metallic 14	Bright White 16	Medium Adriatic Blue Metallic 30
Driftwood Metallic 33	Light Adriatic Blue Metallic 36	Black 41
Bright Aqua Metallic 43	Malachite Metallic 44	Medium Garnet Red Metallic 72

Interior colors: Medium Gray, Medium Beige, Adriatic Blue, Ruby Red. Not all interior colors are available in combination with all exterior colors. See your dealer for compatibility.

When you buy a Silhouette, you'll start to realize Oldsmobile isn't just another car company. Our philosophy is different. We know you expect a high-quality vehicle, and there are a lot out there to choose from. But we firmly believe the way we treat you is as just as important as the vehicle you buy. In fact, we know our business depends on that. One expression of our conviction is the Oldsmobile Edge. We not only back our products, we also back you. We know that some-times things can go wrong. And it isn't right for you, your family, the people who depend on you, to be inconvenienced. So we support you 24 hours a day, every day, at no extra charge, and help with your questions, roadside emergencies, warranty service and even things beyond our control. Like running out of gas or locking your keys in the car. All it takes is a toll-free call to 1-800-442-OLDS. Buying a vehicle should be the start of your relationship with a car company, not the end. You have a right to expect more. At Oldsmobile, we're delivering it.



FOR OCCUPANT PROTECTION:

- Supplemental Inflatable Restraint: manual lap/shoulder belts and driver air bag
- Manual lap safety belt, center seat position
- Energy-absorbing steering column
- Energy-absorbing instrument panel
- Folding front seat back locks, inertia type
- Laminated windshield glass, urethane bonded
- Tempered safety glass, side and rear windows
- Interlocking door latches
- Side-guard door beams
- Safety armrests
- Head restraints, front seats
- Dual sun visors
- Pressure lock radiator cap
- Break-away inside rearview mirror
- Security door locks and door retention components
- Child-security lock (sliding door)

FOR ACCIDENT AVOIDANCE:

- Side marker lamps and reflectors
- Parking lamps
- Four-way hazard warning flashers
- Back-up lamps
- Center high-mounted stop lamp
- Directional signal control
- Windshield defroster, washer and multi-speed wipers
- Inside day/night rearview mirror
- Outside rearview mirrors
- Brake system with dual master cylinder plus warning light
- Anti-lock brakes
- Starter safety switch
- Dual-action hood latch
- Low-glass finish—inside windshield moldings, wiper arms and blades, inside rearview mirror frame and bracket
- Safety road wheel rims
- Tires with built-in tread wear indicators

FOR OCCUPANT PROTECTION:

- Supplemental heater and defroster controls
 - Adjustable disc brake lining wear indicators
- FOR THEFT DETERRENCE:**
- Theft-deterrent steering column lock
 - Remote inside hood release
 - Theft-deterrent key system (separate ignition key)
 - Visible vehicle identification number

IMPORTANT WORDS ABOUT THIS CATALOG:

We have tried to make this catalog as comprehensive and factual as possible. We reserve the right, however, to make changes at any time, without notice, in prices, colors, materials, equipment, specifications, models and availability. Since some information may have been updated since the time of printing, please check with your Oldsmobile dealer for complete details.

• A WORD ABOUT ENGINES:

Oldsmobiles are equipped with engines produced by different operating units of General Motors, its subsidiaries or suppliers to GM worldwide.

• A WORD ABOUT ASSEMBLY:

Oldsmobiles are assembled by different operating units of General Motors, its subsidiaries or suppliers to GM worldwide. Oldsmobiles incorporate thousands of components produced by different operating units of GM, its subsidiaries or suppliers to GM worldwide. We sometimes find it necessary to produce Oldsmobiles with different or differently sourced components than originally scheduled. All such components have been approved for use in Oldsmobiles and will provide the

quality performance associated with the Oldsmobile name.

Since some options may be unavailable when your vehicle is assembled, we suggest that you verify that your vehicle includes the equipment you ordered or, if there are changes, that they are acceptable to you.

• A WORD ABOUT UPDATED SERVICE INFORMATION:

Oldsmobile regularly sends its dealers useful service bulletins about Oldsmobile products. Oldsmobile monitors product performance in the field. We then prepare bulletins for servicing our products better. Now you can get these bulletins, too. Ask your dealer. To get ordering information, call toll-free 1-800-551-4123.

• A WORD ABOUT CORROSION PROTECTION:

Oldsmobiles are designed and built to resist corrosion. All body sheet metal components are warranted against rust-through from corrosion for six years/100,000 miles. There is also no deductible for rust-through repairs. Application of additional rust-inhibiting materials is not required under the corrosion coverage.

• A WORD ABOUT WARRANTY:

The GM 3-year/36,000-mile Bumper-to-Bumper Warranty covers repairs for any new Oldsmobile, including labor and parts, to correct any defects in material or workmanship occurring during the warranty period. The complete vehicle (except tires, which are covered by their manufacturer) will be covered for three years or 36,000 miles, whichever comes first, with no deductible charges. See your Oldsmobile dealer for terms of these limited warranties.

The 1994 Oldsmobile lineup offers a wide choice of models for every driving need. There's something in it for everyone.



ACHEVA



CUTLASS CIERA



CUTLASS SUPREME



EIGHTY EIGHT



EIGHTY EIGHT LSS



NINETY EIGHT



CUTLASS CRUISER



SILHOUETTE



BRAVADA

©1993 GM Corp. All Rights Reserved. Printed in USA 5/93. Delco, FE3, GMAC, Oldsmobile, Silhouette, SmartBuy, SmartLease, Soft-Ride, the Oldsmobile Edge emblem and the Oldsmobile Rocket emblem are registered trademarks of General Motors Corp. TILT-WHEEL is a trademark of General Motors Corp. The Oldsmobile Edge and the GM Card are service marks of General Motors Corp.



SILHOUETTE
By Oldsmobile