

2002 SONATA



 HYUNDAI

CONTENTS

Warranty	02.03
Styling	04.05
Safety	06.07
Comfort	08.09.10.11
Features	12.13
Beauty	14.15
Technology	16.17
Grades / Accessories / Specifications	18.19.20.21

For more information, please visit www.hyundaiUSA.com





URLE

Sonata GLS in Ruby Red



Accent GS



Accent GL



Elantra GLS



Santa Fe LX



XG350L





Hyundai Advantage™ AMERICA'S BEST WARRANTY*

Nothing says more about the quality of a product than the way its manufacturer stands behind it. This fact speaks volumes about the only vehicles backed by the Hyundai Advantage™, America's Best Warranty.

With 10 year, 100,000 mile powertrain protection, 5 year, 60,000 mile bumper-to-bumper coverage and 5 year, unlimited miles 24-hour roadside assistance, no car maker offers a better warranty than the Hyundai Advantage™. And even as you appreciate the protection it provides, you'll enjoy something else as well: the confidence you'll feel every time you turn the key.

10 YEAR 100,000 MILE POWERTRAIN PROTECTION
Covers most engine and transaxle components.

5 YEAR 60,000 MILE BUMPER-TO-BUMPER COVERAGE
Covers nearly every new vehicle component.

5 YEAR UNLIMITED MILES 24-HOUR ROADSIDE ASSISTANCE
Covers towing (including accident-related), lock-out, flat tire and jump starting.

5 YEAR 100,000 MILE ANTI-PERFORATION WARRANTY
Covers corrosion-related rust-through of body sheet metal from inside to out.

*See dealer for LIMITED WARRANTY details.



Sonata in Ardor Blue



STYLING

Automotive design is more than a matter of styling. A truly successful design will recognize and accomplish a clearly defined mission. In the case of the 2002

Sonata, that mission is to offer outstanding safety, performance and value with style and refinement. Sonata's sophisticated new look is both fashionable and functional; every aspect of it is dedicated to offering the most rewarding

driving experience in the mid-size class. From its handsome new grille, flanked by

aerodynamic, projector-type clear lens halogen headlights to its integrated

rear spoiler, which directs airflow around the cabin for a quiet ride, the new

Hyundai Sonata is clearly a mission accomplished.



Rear combination taillights are designed to be more than just stylish. They're also highly visible to approaching drivers.



Aerodynamic, projector-type halogen headlights enhance already elegant styling.



Sporty 16" 10-spoke aluminum alloy wheels and Michelin® touring tires are standard on the Sonata GLS and LX.

SAFETY



Dual front airbags and front side airbags are standard. The airbag system self-checks at start up to help ensure readiness.

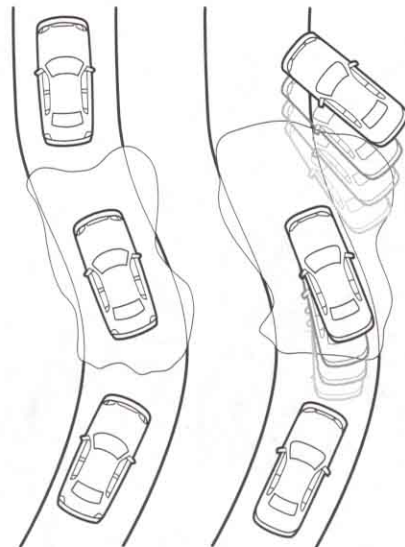


Sonata GLS and LX include 4-wheel disc brakes. An Anti-lock Braking System (ABS)² with a Traction Control System (TCS)³ is available as an option.



The 3-point front seatbelt pretensioners lock in the event of a moderate to severe frontal impact.

Significantly, some of Sonata's most advanced design is devoted to occupant protection. The cabin is filled with advanced safety features like dual front airbags¹, front side airbags and front seatbelt pretensioners with force limiters. Sonata's structure is also a vital part of its occupant protection system, enclosing the passenger cabin with steel roof rails and side-impact door beams that protect against collision impacts. For added protection, the body contains energy-absorbing front and rear crumple zones. And since it's best to avoid



In slippery driving conditions, the available Traction Control System (TCS) activates upon a loss of traction, then applies corrective action until traction is restored.

impacts in the first place, Sonata is designed to help you out of a difficult situation, with speed-sensitive rack-and-pinion power steering, power front disc brakes and 4-wheel independent suspension that provide responsive handling and easy maneuverability.

¹The Supplemental Restraint (airbag) System (SRS) is designed to work with the 3-point seatbelt system. The SRS deploys in certain front-end and/or side-impact conditions where significant injury is likely. The SRS is not a substitute for seatbelts which should be worn at all times. Children under the age of 13 should be restrained securely in the rear seat. NEVER place a rear-facing child seat in the front seat of a vehicle with a passenger-side airbag. ²Available as part of a specific option package. See dealer regarding availability. ³Available as part of a specific option package. See dealer regarding availability. The Traction Control System (TCS) is meant to enhance conscientious driving habits, and is not a substitute for proper driving procedures.





Sonata GLS in Slate Gray

COMFORT



Power windows, door locks and mirrors are standard on all Sonata models.



The Sonata LX's automatic climate control system maintains a pre-selected cabin temperature.



Steering wheel-mounted cruise control switches keep your eyes on the road.



Sonata GLS and LX feature a front center console with a two-level storage compartment.

Chances are you'll be surprised, then delighted by the Sonata's cabin. When it comes to room, safety features and standard amenities,

no other car in its class can match Sonata for sheer value. Sonata's interior is designed to accommodate five full-size passengers and pamper them with luxuries like air conditioning and an AM/FM stereo CD player with 6 speakers – and that's just for starters.

Sonata's other standard features – literally too numerous to list here – include cruise control, multi-adjustable driver's seat, remote keyless entry system with alarm, tilt steering column, driver's illuminated visor vanity mirror and a quartz digital clock. You'll also find plenty of touches that make the new Sonata one of the most thoughtful cars on the road. The center console, for instance, contains a padded armrest and a two-level storage compartment (on GLS and LX) that lets you keep often-used items on top. Other

Sonata standard features you'll appreciate are electric remote releases for the fuel filler door and trunk (very handy when both of your arms are full), and 12-volt accessory outlets in both the cabin and trunk.



Sonata LX driver control center





Sonata LX in Black leather

U P



Sonata GLS in Desert Sand

FEATURES

If you love the new Sonata because of its looks, who can blame you? It is, after all, quite a beautiful car. It's also every bit as appealing inside, with the kind of smart design that makes driving easier and more enjoyable. For instance, Sonata's gauges are set in the driver's natural line of sight for easy readability. Vital controls and switches, right down to the stereo and climate controls, are ergonomically designed and placed. The Sonata's functionality is matched by an impressive array of creature comforts, including power windows with a driver's Auto-down feature, power door locks and mirrors, and a 60/40 split fold-down rear seatback that helps you handle oversize cargo. Dialing things up a notch or two are the Sonata GLS and LX. Both feature a powerful 2.7-liter V6 engine, 4-wheel disc brakes, a premium AM/FM stereo cassette and CD player with 6 speakers, aluminum alloy wheels and woodgrain-trimmed interior. To this, the luxurious Sonata LX adds leather seating surfaces, an automatic climate control system and an 8-way power driver's seat.



Both the Sonata GLS and LX include a premium AM/FM stereo cassette and CD player with 6 speakers and power antenna.



A 60/40 split fold-down rear seatback helps you handle plus-size cargo.



The available power moonroof tilts up or slides back at the touch of a button. An inner sunshade is included.



Sonata LX in White Pearl



TECHNOLOGY

Obviously, the new Sonata has been designed to transport you in style and comfort. It's also been engineered to make the driving experience completely enjoyable, thanks to a host of refinements that make it the most roadworthy

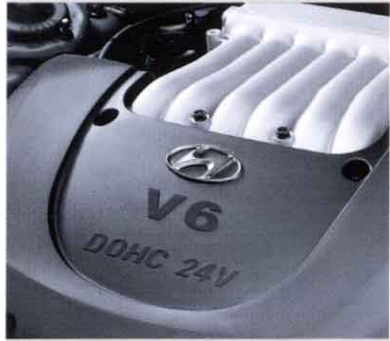
Sonata ever. It starts with a re-engineered 4-wheel independent suspension, gas-filled shocks, and Michelin® radial tires that combine to give the new Sonata superb ride and handling characteristics. (In fact, Sonata's speed-

sensitive, rack-and-pinion power steering has an on-center feel that can give some costly European sedans a run for their money). Then there's Sonata's available dual-mode automatic transmission with SHIFTRONIC™, which

offers you the choice of fully automatic or manual sport shifting¹. Finally, Sonata's 4-cylinder and V6 engines

are designed to provide dependable, responsive performance with minimal scheduled maintenance.

¹Automatic transmission with SHIFTRONIC™ is available at extra cost.



Sonata GLS and LX models are powered by a low-maintenance, 2.7-liter, 24-valve DOHC V6 engine with 181 horsepower.



The dual-mode, automatic transmission with SHIFTRONIC™ offers fully automatic or manual sport shifting¹.



The standard battery saver feature automatically turns headlights off in case you forget to.



Sonata GLS in Brilliant Silver



SONATA

The Sonata includes the following standard features:

Air conditioning • Dual front airbags¹ • Front side airbags • Power windows, door locks and mirrors • AM/FM stereo CD player with 6 speakers • Cruise control • 60/40 split fold-down rear seatback • Driver's multi-adjustable seat • Remote keyless entry system with alarm • Remote hood, trunk and fuel filler door releases • Tilt steering column • Front fog lights • 2.4-liter, 149-horsepower, 16-valve DOHC 4-cylinder engine • 5-speed manual transmission • 15" Michelin[®] touring-type radial tires with full wheelcovers



GLS

The Sonata GLS includes the Sonata's standard features plus:

2.7-liter, 181-horsepower, 24-valve DOHC V6 engine • Power-assisted 4-wheel disc brakes • Driver's multi-adjustable seat with lumbar support • Heated dual power mirrors • Premium AM/FM stereo cassette and CD player with 6 speakers • 16" aluminum alloy wheels • Premium seat cloth • Power antenna • Woodgrain trim



LX

The Sonata LX includes the Sonata GLS's standard features plus:

Leather seating surfaces • Automatic climate control system • 8-way power driver's seat

¹The Supplemental Restraint (airbag) System (SRS) is designed to work with the 3-point seatbelt system. The SRS deploys in certain front-end and/or side-impact conditions where significant injury is likely. The SRS is not a substitute for seatbelts which should be worn at all times. Children under the age of 13 should be securely restrained in the rear seat. NEVER place a rear-facing child seat in the front seat of a vehicle with a passenger-side airbag.

PERSONALIZED

ACCESSORIES

Your Hyundai dealer can show you a full line of genuine Hyundai accessories designed to make driving your Sonata even more enjoyable. To keep your Hyundai looking and running like new, always use genuine Hyundai parts and accessories, which meet our own strict standards for quality and durability.



Protect your Sonata's finish with a durable, high-quality front nose mask.



A custom-fitting trunk cargo net keeps important items in place.

EXTERIOR FEATURES	SONATA	SONATA GLS	SONATA LX
Power Moonroof w/Sliding Sunshade	O ¹	O ¹	O ¹
Front Fog Lights	S	S	S
Dual Power Bodycolored Mirrors	S	Heated	Heated
Bodycolored Door Handles	S	S	S
Bodycolored Bodyside Molding	S	w/Chrome Inserts	w/Chrome Inserts
Remote Keyless Entry System with Alarm	S	S	S
Bodycolored Bumpers	S	w/Chrome Inserts	w/Chrome Inserts
Aluminum Alloy Wheels	A	S	S

INTERIOR FEATURES

Driver's and Front Passenger's Airbags (SRS)	S	S	S
Driver's and Front Passenger's Side Airbags	S	S	S
Air Conditioning	S	S	S
Power Windows w/Auto-down Driver's Window	S	S	S
Power Door Locks	S	S	S
Cruise Control	S	S	S
AM/FM Stereo w/6 Speakers	w/CD Player	w/Cassette and CD Player	w/Cassette and CD Player
Power Driver's Seat	NA	NA	S
Driver's Multi-adjustable Seat	S	w/Lumbar Support	8-way Power
Reclining Front Bucket Seats w/Adjustable Head Restraints	S	S	S
Leather Seating Surfaces	NA	NA	S
Leather-wrapped Steering Wheel	S ^{††}	S	S
Adjustable Steering Column	S	S	S
Quartz Digital Clock	S	S	S
Maplights	NA	S	S
Beverage Holders (front & rear)	Front Only	S	S
Tachometer	S	S	S
2-speed/Variable Intermittent Windshield Wipers	S	S	S
3-point Front Seatbelts with Pretensioners and Force Limiters	S	S	S
Adjustable Front Seatbelt Anchors	S	S	S
Rear 3-point Seatbelts	S	S	S
Rear Child-seat Tether Anchors (3)	S	S	S
60/40 Split Fold-down Rear Seatback	S	S	S
Rear-seat Heater Ducts	S	S	S
Rear Window Defroster with Timer	S	S	S
Low-fuel Indicator Light	S	S	S
Cargo Area Light	S	S	S
Cargo Area 12-volt Outlet	S	S	S
Door Pocket Storage Compartments	S	S	S
Driver's and Front Passenger's Illuminated Vanity Mirrors	Driver's Only	S	S
Childproof Rear Door Locks	S	S	S



Ebony Black
(all trim levels w/Black interior)



Brilliant Silver
(all trim levels w/Black interior)



Desert Sand
(all trim levels w/Beige interior)



Beige



GLS Beige



LX Beige Leather



White Pearl
(all trim levels w/Beige interior)



Ruby Red
(all trim levels w/Beige interior)



Noble White
(all trim levels w/Black interior)



Black



GLS Black



LX Black Leather



Ardor Blue
(all trim levels w/Black interior)



Slate Gray
(all trim levels w/Black interior)

ENGINE	SONATA	SONATA GLS	SONATA LX
Type: Inline 4	S	NA	NA
Aluminum Alloy V6	O	S	S
Displacement (liters)	2.4 (2.7) [†]	2.7	2.7
Horsepower @ rpm (SAE net)	149 @ 5500 (181 @ 6000) [†]	181 @ 6000	181 @ 6000
Torque (lb.-ft. @ rpm)	156 @ 3000 (177 @ 4000) [†]	177 @ 4000	177 @ 4000
Compression Ratio	10.0:1	10.0:1	10.0:1
Valve Train: DOHC	16-valve (24-valve) [†]	24-valve	24-valve
Fuel System: Multi-port Programmed Fuel Injection	S	S	S
Ignition System: Electronic	S	S	S

DRIVETRAIN

Type	FWD	FWD	FWD
Manual Transmission: 5-speed	S	S	S
Automatic Transmission: 4-speed w/SHIFTRONIC™	O	O	O
Final Drive Ratio (MT/AT)	3.88/3.77	4.06/3.77	4.06/3.77

BODY/SUSPENSION/CHASSIS

Body Type: Unit Body	S	S	S
Suspension-front: Double Wishbone	S	S	S
Suspension-rear: Multi-link w/Trailing Link	S	S	S
Stabilizer Bar (mm., front/rear)	25.5/11.4	25.5/11.4	25.5/11.4
Power-assisted Rack-and-pinion Steering	S	S	S
Turning Diameter, Curb-to-curb (ft.)	34.4	34.4	34.4
Power-assisted Front Disc/Rear Drum Brakes	S	NA	NA
Power-assisted 4-wheel Disc Brakes	O ¹	S	S
4-wheel Anti-lock Braking System (ABS) w/Traction Control	O ² (O ¹) [†]	O ¹	O ¹
Wheels	15" w/Full Covers	16" Aluminum Alloy	16" Aluminum Alloy
Tires: Michelin® All Season	P205/65R 15	P205/60HR 16	P205/60HR 16

EXTERIOR DIMENSIONS

Wheelbase (in.)	106.3	106.3	106.3
Length (in.)	186.9	186.9	186.9
Height (in.)	56.0	56.0	56.0
Width (in.)	71.7	71.7	71.7
Track (in., front/rear)	60.6/60.2	60.6/60.2	60.6/60.2
Curb Weight (lbs., MT/AT)	3181/3217 (3181/3212) [†]	3223/3254	3223/3254

INTERIOR DIMENSIONS

Head Room (in., front/rear)	39.3/37.6	39.3/37.6	39.3/37.6
Leg Room (in., front/rear)	43.3/36.2	43.3/36.2	43.3/36.2
Shoulder Room (in., front/rear)	56.9/55.7	56.9/55.7	56.9/55.7
Hip Room (in., front/rear)	55.8/54.4	55.8/54.4	55.8/54.4
Cargo Volume (cu. ft., seat up/down)	14.1	14.1	14.1
Passenger Volume (cu. ft.)	100.0	100.0	100.0

EPA MILEAGE ESTIMATES*/FUEL CAPACITY

5-speed Manual (City/Highway)	22/30 (20/27) [†]	20/27	20/27
4-speed Automatic (City/Highway)	22/30 (20/27) [†]	20/27	20/27
Fuel Capacity (gal.)	17.2	17.2	17.2

*EPA estimates for comparison. Your actual mileage will vary with options, driving conditions, driving habits and vehicle's condition. Some accessories are not available on some models. While the information contained in this brochure was correct at time of printing, specifications and equipment can change. No warranty or guarantee is being extended in this brochure and Hyundai reserves the right to change product specifications and equipment at any time without incurring obligations. Please contact your Hyundai dealer for current vehicle specifications.

Accessory = A Standard Features = S Option = O Not Available = NA

¹Available as part of an option package. See dealer regarding availability. ²TCS not available with 4-cylinder engine. [†]With optional V6 engine. ^{††}Models with automatic transmission only.

DRIVING IS BELIEVING to protect you from financial obligation if your vehicle is lost or stolen, and your

Hyundai Motor Finance Company (HMFC) is a wholly owned subsidiary of Hyundai Motor America. Our mission is to provide support in selling new Hyundai vehicles. In addition to installment loans and leases, we provide a wide range of products, including Hyundai Gap Protection (HGP) in the states where permitted by local law. HGP is designed

insurance proceeds are not adequate to pay off your HMFC-funded contract. We also offer the Hyundai Protection Plan, the factory-backed extended service contract that fits perfectly with the Hyundai Advantage™, America's Best Warranty*. Our College Graduate Program provides special financing options for qualified graduates and candidates for graduation attending an accredited four-year college, university, nursing school, and graduates from an accredited two-year college.

Ask your dealer about using HMFC and the full range of Hyundai-branded products we offer.

*See dealer for LIMITED WARRANTY details.



HYUNDAI MOTOR FINANCE COMPANY

www.hyundaiUSA.com

1-800-826-CARS

NP020-F2000 ©2001 Hyundai

