



SATURN

OUTLOOK



2007

LIKE ALWAYS.

There is a way to do things differently. To replace hassle and haggle with learn and listen. To make the process of buying a car less of a process. To pour everything we have into everything we do.





LIKE NEVER BEFORE.

There is a way to stay the same in one way, and evolve in another. To celebrate that your life has grown, and to find the vehicle that fits it. There is a way to marry style and agility to fuel efficiency, space and versatility. To move people and things, and still be moved by the driving experience. There is a way to kick compromise to the curb. Introducing the eight-passenger Saturn OUTLOOK crossover.

SPACE FOR YOU. SPACE FOR LIFE.



The OUTLOOK XR in available White Diamond Tricoat with available dual chrome exhaust tips, power liftgate and retailer-installed chrome tubular side step bars.



SPACIOUS AND
STYLISH, TOGETHER
AT LAST.

Here's proof that big can be beautiful. In typical Saturn fashion, we sweat the details, from sunroof to seams. 1) An available sunroof with rear skylight ensures the OUTLOOK's interior has room with a view. 2) The five-gauge dash evokes European design with subtle matte and chrome accents. 3) Refinements like warm-looking surfaces and clean lines give the OUTLOOK's interior a polished, contemporary feel. 4) Large projector-beam halogen headlamps make for a more stylish sedan-like front, and the OUTLOOK's tight panel gaps rival those of luxury cars, adding strength and integrity to the exterior design.



NOT UNDERSIZED, NOT OVERSIZED.
LIFE-SIZED.





The refined OUTLOOK XR with available seven-passenger captain's chairs seat configuration in Tan Leather.

We had two thoughts in mind when designing the OUTLOOK crossover: comfort and versatility. That's why there's room for eight adults (seven with optional second row captain's chairs), with elbow room to spare. And with 116.9 cubic feet* of adaptable cargo space, there's no need to leave anything behind.

NOT A BAD SEAT IN THE HOUSE.

Unlike some three-row vehicles, the OUTLOOK boasts lots of usable space behind the last row. Need room for eight, plus golf clubs and a baby stroller? No worries.



Stash all your road trip essentials in any of the OUTLOOK's two dozen storage areas. Up to a dozen cupholders make sure you have room for all your liquid assets.

Take a 360-degree tour of the OUTLOOK's spacious interior at saturn.com/outlook.

*Cargo and load capacity limited by weight and distribution.

All passengers are seated equally here. Unique comfort bolsters in the third row compress to create a flat load floor, then expand when upright to provide maximum comfort. And there's plenty of legroom to go around.

Separate climate control systems let passengers in the rear seats control their own temperature. Additional vents in the roof and floor make sure each row receives heating and cooling as quickly and quietly as possible.

BRING IT. BRING IT ALL.

Thanks to two rows of 60/40-split fold-flat seats, lengthy items can come along for the ride.

The available power liftgate makes for convenient loading. And a lower load height makes it easier for you to pack it up.



Additional storage under the floor of the cargo area lets you stash valuables out of sight.

Large doors provide easy side loading, as well as a more accessible entry and exit. Your passengers will thank you.

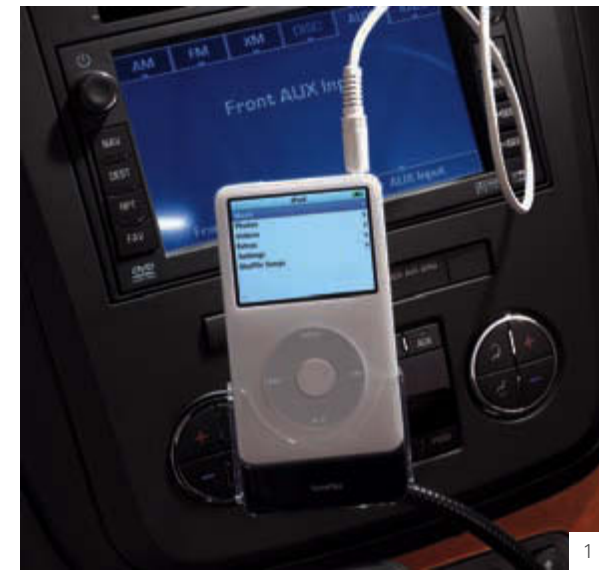


1



2

1) With Smart Slide, there's no more grumbling about the back seat. Thanks to this innovative feature, a quick one-handed movement of the second-row seat gives you easy access to the back row. So your exit (and entry) strategy is easier than ever. 2) With the second and third rows folded flat, the OUTLOOK provides plenty of storage space. 116.9 cubic feet* of it, to be exact. So you can bring it all.



1 2

LET'S TAKE THIS SHOW ON THE ROAD.

With its advanced entertainment system, the OUTLOOK becomes your home away from home. 1) The MP3-compatible audio system is ready to go,¹ while optional XM Satellite Radio² gives you the programming variety to customize every drive. And you'll hear it all through an optional Advanced Audio System, featuring a 300-watt amplifier and nine speakers plus subwoofer. 2) The available DVD player features one of our biggest screens yet, so watching movies is like being right in your living room. The rear DVD even features handy wireless headphones to eliminate tangles. 3) The kids can view their feature in the back while you use the available advanced GPS Navigation System³ in front. A GPS voice-recognition feature gives you easy access to preset destinations, as well as the radio and CD player. Need a moment of silence? All the controls are available at your fingertips on the steering wheel.⁴ Read up on the OUTLOOK's infotainment features at saturn.com/outlook.



¹MP3 player and accessories not included. ²Available only in the 48 contiguous United States. Service fees apply. Visit gm.xmradio.com for details. ³Navigation map covers the 48 contiguous United States and portions of Canada, but does not cover Alaska, Hawaii, Puerto Rico or the Virgin Islands. Not available on OUTLOOK XE. ⁴Not available on OUTLOOK XE.

SPORTY HANDLING. IMPRESSIVE FUEL ECONOMY.
ALL-WHEEL DRIVE. YOUR TYPICAL
OVERACHIEVER.

Contrary to popular belief, space and efficiency don't have to be mutually exclusive. As proof, our engineers gave the OUTLOOK crossover the best of both worlds—generous cargo space and outstanding fuel efficiency.* On top of all that, the OUTLOOK sports impressive handling for such a roomy vehicle. Four-wheel independent suspension increases its agility, and the wheels are placed near the corners so the OUTLOOK takes curves with a grace that belies its size. Intelligent, available all-wheel drive adjusts to your driving environment, giving you added performance and traction when you need it.



The OUTLOOK XR in available White Diamond Tricoat with available all-wheel drive. Like all OUTLOOK models, it was built at our innovative new plant in Lansing, Michigan, the first auto manufacturing plant in the world to receive gold certification from the U.S. Green Building Council.

*AWD model EPA estimated MPG 17 city/24 highway. FWD model EPA estimated MPG 18 city/26 highway.



WE'VE GOT YOUR BACK. AND THE REST OF YOU, TOO.

At Saturn, we think of safety in three stages: before, during and after. Not only do we do our best to protect you in the case of an accident, we try to prevent it from happening in the first place. 1) Every OUTLOOK comes equipped with StabiliTrak with rollover mitigation, a stability system that helps you stay on track in difficult driving situations. If you do need to react, anti-lock braking prevents skids, while Traction Control helps you maintain your grip on slippery or uneven surfaces. In the case of a collision, you're protected by an advanced safety cage with steel door beams and strategic crumple zones, which direct energy away from you and your passengers. Dual-stage front air bags¹ and side impact driver and passenger air bags deploy to protect front passengers in an impact, while head curtain side air bags span all three rows to shield outboard passengers. 2) OnStar[®] Advanced Automatic Crash Notification² alerts local emergency services in case of an accident and even communicates the severity of the collision whether your air bags deploy or not. To learn more about the OUTLOOK's many safety features, visit saturn.com/outlook.

¹Air bag inflation can cause severe injury or death to anyone too close to the bag when it deploys. Be sure every occupant is properly restrained. See page 28 for important information about air bags, including a note about child safety. ² Call 1-888-4ONSTAR (1-888-466-7827), visit onstar.com and see page 28 for system limitations and details.

POWERFUL

HORSES WITHOUT THE POWERFUL THIRST.



1

With up to 275 horsepower available under its hood and better fuel economy than any eight-passenger SUV,¹ the OUTLOOK crossover doesn't compromise efficiency for muscle. 1) The robust 3.6-liter V-6 engine delivers an impressive flat torque curve for smooth acceleration, and was engineered to be quiet and low maintenance. 2) With a towing capacity of up to 4,500 pounds,² the OUTLOOK XR is always up for adventure. The tow button lets you put the transmission in a special mode when you're hauling heavy cargo, too. Hydramatic six-speed automatic transmission gives you flawless shifting and fluid acceleration, adapting to your drive and minimizing everyday wear and tear. Get the performance story at saturn.com/outlook.

2



¹FWD model EPA estimated MPG 18 city/26 highway. Excluding other GM vehicles. Actual mileage varies with different uses and driving conditions. ²Maximum trailer ratings are calculated assuming a properly equipped base vehicle plus driver. See specifications page for details.

OUTLOOK DIMENSIONS



WEIGHTS AND CAPACITIES

	FWD	AWD
Curb weight XE / XR (lbs.)	4,700 / 4,750	4,905 / 4,955
Passenger volume (cu. ft.)	153.6	153.6
Cargo-area volume (cu. ft.) ¹		
second and third rows folded	116.9	116.9
third row folded	68.9	68.9
behind third row	19.7	19.7
Fuel capacity (approx. gal.)	22.0	22.0
Towing capacity (max. lbs.) ²	4,500	4,500
Passenger seating	8 / 7	8 / 7

INTERIOR DIMENSIONS (FIRST / SECOND / THIRD ROW IN.)

Headroom	40.4 / 39.3 / 38.4
Legroom	41.3 / 36.9 / 33.2
Hip room	58.0 / 57.9 / 48.3
Shoulder room	62.0 / 61.1 / 57.8

WHEELS



18" Standard Painted Alloy (XE)



18" Standard Machined Alloy (XR)



19" Available Polished Alloy³ (XR)

Take your choice from three eye-catching wheels, each with their distinct benefits. The OUTLOOK features all-season tires for quietness and excellent performance. The XE and XR come equipped with Goodyear P255/60R18 tires. The XR is also available with Goodyear P255/60R19 touring tires.

OUTLOOK SPECIFICATIONS

ENGINE AND TRANSMISSION

	XE	XR
Engine	3.6-liter, 24-valve, V-6, DOHC, VVT intake / exhaust	3.6-liter, 24-valve, V-6, DOHC, VVT intake / exhaust
Horsepower	270 @ 6,600 rpm	275 @ 6,600 rpm
Torque (ft. lbs.)	248 @ 3,200 rpm	251 @ 3,200 rpm
Transmission	6-speed automatic	6-speed automatic

CHASSIS

Drivetrain	Front-engine / front-wheel drive; front-engine / all-wheel drive
Body construction	Body frame integral steel safety cage with front and rear crumple zones and side impact protection
Suspension	MacPherson strut front and direct acting stabilizer bar; isolated engine cradle; linked H-arm independent rear and isolated subframe
Brakes	Four-wheel anti-lock disc

FUEL ECONOMY ESTIMATES (CITY / HWY MPG)⁴

	XE FWD	XE AWD	XR FWD	XR AWD
Automatic transmission	18 / 26	17 / 24	18 / 26	17 / 24

COMFORT AND CONVENIENCE

	XE	XR
Auto-dimming inside rearview mirror with compass display	—	•
Convenience Package (XR): power rear liftgate, ultrasonic rear parking assist, remote vehicle start, 115-volt power outlet and heated windshield washer fluid	—	•
Convenience Package (XE): remote vehicle start, 115-volt power outlet and heated windshield washer fluid	•	—
Dual-zone automatic climate control ⁵	•	•
Eight-passenger seating	•	•
Enhanced Convenience Package: driver seat memory, four-way adjustable power passenger seat with power lumbar adjustment, outside heated power-adjustable mirrors with memory, auto-dimming driver-side mirror, and power windows with driver express-up and passenger express-down ⁶	—	•
Floor mats, carpeted, first, second and third rows	•	•
Leather-wrapped steering wheel with audio controls	—	•
Power windows with driver express-down	•	•
Preferred Package: six-way power-adjustable driver seat with manual lumbar adjustment and roof rails	•	•
Premium Trim Package: leather-appointed first and second row seats, heated driver and front passenger seats	—	•
Privacy tint on rear door windows and cargo area	•	•
Rear seat HVAC with climate controls	•	•
Remote keyless entry with extended range and power door locks with anti-lockout protection	•	•
Sunroof with rear skylight	•	•
Smart Slide second row seats	•	•
Tilt and telescoping adjustable steering wheel with cruise control buttons	•	•
Touring Package: 19-inch polished alloy wheels, all-season touring tires and dual chrome exhaust tips	—	•
Trailer Package: heavy-duty engine cooling system and trailer hitch	•	•

SAFETY AND SECURITY

Automatic projector-beam halogen headlamps and daytime running lamps	•	•
Dual-stage driver and front passenger air bags with Passenger Sensing System ⁷	•	•
Head curtain side air bags in all three rows for outboard occupants ⁷	•	•
Height-adjustable front safety belts with pretensioners and energy-absorbing retractors	•	•
High-Intensity Discharge headlamps	—	•
Lower Anchorages and Top Tethers for Children (LATCH) in second row outboard seating positions	•	•
OnStar [®] with one-year Safe & Sound Service Plan ⁸	•	•
Projector-beam halogen foglamps	—	•
Security system and engine-immobilizing theft-deterrent feature	•	•
Side impact air bags for driver and front passenger ⁷	•	•
StabilTrak vehicle stability control system	•	•
Tire pressure monitor	•	•
Traction Control	•	•

ENTERTAINMENT SYSTEMS

Advanced Audio Package: six-disc, in-dash CD / MP3 player with AM / FM stereo, 300-watt amplifier, nine speakers plus subwoofer, auxiliary input jack, speed-compensated volume and rear seat audio controls	•	•
CD / MP3 player with AM / FM stereo, auxiliary input jack, speed-compensated volume and six speakers	•	•
DVD Entertainment Package: flip-down eight-inch diagonal screen, dual wireless headphones, auxiliary audio / video input jacks and remote control ⁹	•	•
GPS Navigation radio with touch-screen display ¹⁰	—	•
XM Satellite Radio with the programming variety to customize your drive ¹¹	•	•

• = standard ◦ = available — = not available

¹Cargo and load capacity limited by weight and distribution. ²With a properly equipped vehicle and appropriate trailer hitch. Maximum trailer ratings are calculated assuming a properly equipped base vehicle, except for any options necessary to achieve the rating, plus driver. The weight of other optional equipment, passengers and cargo will reduce the maximum trailer weight your vehicle can tow. See your Saturn retailer for details. ³Included with Touring Package. ⁴EPA estimates.

⁵Requires Advanced Audio Package on XE. ⁶Requires Premium Trim and Convenience Packages. ⁷See page 28 for important information about air bags, including a note about child safety. ⁸Call 1-888-4ONSTAR (1-888-466-7827), visit onstar.com and see page 28 for system limitations and details. ⁹Requires Advanced Audio Package. Six-disc CD changer not included. ¹⁰Requires Advanced Audio Package. Navigation map covers the 48 contiguous United States and portions of Canada, but does not cover Alaska, Hawaii, Puerto Rico or the Virgin Islands. Six-disc CD changer not included. ¹¹Available only in the 48 contiguous United States. Service fees apply. Visit gm.xmradio.com for details.

EXTERIOR COLORS

To see the whole OUTLOOK in every color, visit saturn.com/outlook.

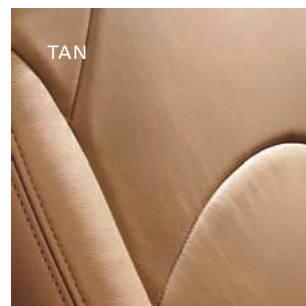
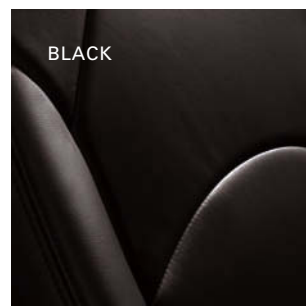
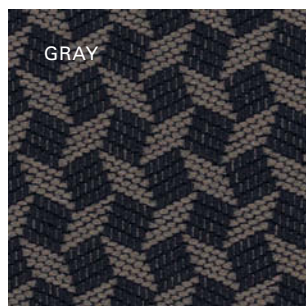


COLOR GROUPS

For a closer look at your interior choices, see your Saturn retailer.

EXTERIOR PAINT	CLOTH ³	AVAILABLE LEATHER XR
Charcoal	BLACK / GRAY / TAN	BLACK / GRAY / TAN
Cocoa	BLACK / TAN	BLACK / TAN
Cream White	BLACK / GRAY / TAN	BLACK / GRAY / TAN
Gold Mist	BLACK / TAN	BLACK / TAN
Midnight Blue	BLACK / GRAY / TAN	BLACK / GRAY / TAN
Ocean Mist	BLACK / GRAY / TAN	BLACK / GRAY / TAN
Red Jewel Tintcoat ¹	BLACK / TAN	BLACK / TAN
Silver Pearl	BLACK / GRAY / TAN	BLACK / GRAY / TAN
White Diamond Tricoat ²	BLACK / GRAY / TAN	BLACK / GRAY / TAN

INTERIOR CLOTH COLORS



INTERIOR LEATHER COLORS

RETAILER-INSTALLED ACCESSORIES

To see the latest OUTLOOK accessories, visit saturn.com/outlook or your Saturn retailer.



The OUTLOOK is ready to go as is, but if you want extras, we have plenty of them. 1) Premium all-weather floor mats shield your floor from the elements. Rain, snow, dirt, even spills are contained and easily cleaned. 2) A sunroof wind deflector makes sure things don't get gusty when the sunroof is open wide. 3) Prepare yourself: The eye-catching 19-inch cast chrome wheels are sure to attract plenty of longing glances at stoplights. 4) Wheel arch trim accentuates the OUTLOOK's wheel wells to give it a more rough-and-tumble off-road look. 5) Chrome tubular side step bars make it that much easier to get in and out—not that you'll be looking to leave anytime soon. 6) Even with lots of cargo room, it's nice to have the extra space. With integrated roof rack crossrails and a cargo box, additional trip necessities can easily come along for the ride.

¹Available at an additional charge. ²Available on XR at an additional charge. ³Tan cloth available early 2007.

IMPORTANT WORDS ABOUT THIS CATALOG

We have tried to make this catalog comprehensive and factual. We reserve the right, however, to make changes at any time, without notice, in prices, colors, materials, equipment, specifications, models and availability. Specifications, dimensions, measurements, ratings and other numbers in this catalog and other printed materials provided at the retailer or affixed to vehicles are approximates based upon design and engineering drawings and prototypes and laboratory tests. Your vehicle may differ due to variations in manufacture and equipment. Because some information may have been updated since the time of printing, please check with your Saturn retailer for complete details. Saturn reserves the right to lengthen or shorten the model year for any product for any reason, or to start and end model years at different times.

A NOTE ABOUT AIR BAGS AND CHILD SAFETY

Always use safety belts and the correct child restraint for your child's age and size. Even in vehicles equipped with air bags and the Passenger Sensing System, children are safer when properly secured in a rear seat. Never place a rear-facing infant restraint in the front seat of any vehicle equipped with an active frontal air bag. Air bag inflation can cause severe injury or death to anyone too close to the bag when it deploys. Be sure every occupant is properly restrained. See your vehicle Owner's Handbook and child-safety seat instructions for more information.

ONSTAR INFORMATION

OnStar services require vehicle electrical system (including battery), wireless service and GPS satellite signals to be available and operating for features to function properly. OnStar acts as a link to existing emergency service providers. Subscription Service Agreement required. Call 1-888-4ONSTAR (1-888-466-7827) or visit onstar.com for OnStar's Terms and Conditions, Privacy Policy, and system limitations and details.

SATURN'S VEHICLE EXCHANGE PROGRAM

Within the first 30 days or 1,500 miles of delivery, whichever comes first, the original purchaser may exchange his or her Saturn vehicle if not completely satisfied. In the event that an owner returns his or her vehicle, he or she will exchange it for another 2007 Saturn vehicle. See retailer for limitations and restrictions. All the same factory-supported initiatives will be included on the exchange vehicle that were on the original vehicle. The vehicle must be returned in the condition in which it was delivered, without damage or excessive wear and tear. If non-warranty repairs equal to or greater than \$300 have been performed or are necessary, the vehicle is not eligible to be returned; if less than \$300, the damage must be repaired or the estimate deducted from the credit toward the exchange vehicle.

NEW VEHICLE LIMITED WARRANTY

This warranty is for GM vehicles registered in the U.S. See your Saturn retailer for terms and conditions. Covered for 3 years/36,000 miles (whichever comes first): the complete vehicle, tires, towing to your nearest Saturn retailer, cosmetic corrosion resulting from defects, repairs made to correct any vehicle defect, with no charge for most warranty repairs. Covered for 6 years/100,000 miles (whichever comes first): rust-through corrosion.

POWERTRAIN LIMITED WARRANTY

This fully transferable warranty is for GM vehicles registered in the U.S. See your Saturn retailer for terms and conditions. Covered for 5 years/100,000 miles (whichever comes first): most engine, transmission, transfer case and axle assemblies.

ROADSIDE ASSISTANCE

For 5 years/100,000 miles (whichever comes first): 24-Hour Roadside Assistance that includes fuel delivery, lockout, flat tire repair, jump start and certain emergency towing services. This fully transferable service is for GM vehicles registered in the U.S. See your Saturn retailer for terms and conditions.

COURTESY TRANSPORTATION

For 5 years/100,000 miles (whichever comes first): ask your Saturn retailer for Courtesy Transportation if you leave your vehicle for warranty repairs. You may qualify for expense reimbursement and/or transportation options. Services vary by retailer.

CORROSION PROTECTION

Saturn vehicles are designed and built to resist corrosion. All body and sheet metal components are warranted against rust-through corrosion for 6 years/100,000 miles, whichever comes first. Application of additional rust-inhibiting materials is not required under the corrosion coverage and none is recommended. See your Saturn retailer for terms of this limited warranty.

AN IMPORTANT NOTE ABOUT ALTERATIONS AND WARRANTIES

Installations or alterations to the original equipment vehicle (or chassis) as distributed by GM are not covered by the GM New Vehicle Limited Warranty. The special body company, assembler, equipment installer or upfitter is solely responsible for warranties on the body or equipment and any alterations (or any effect of the alterations) to any of the parts, components, systems or assemblies installed by GM. GM is not responsible for the safety or quality of design features, materials or workmanship of any alterations by such suppliers.

ASSEMBLY

Saturn vehicles and their components are assembled or produced by different operating units of GM, its subsidiaries or suppliers to GM worldwide. We sometimes find it necessary to produce Saturn vehicles with different or differently sourced components than originally scheduled. Because some options may be unavailable when your vehicle is assembled, we suggest you verify that your vehicle includes the equipment you ordered or, if there are changes, that they are acceptable to you.

ENGINES

Saturn products are equipped with engines produced by GM Powertrain or other suppliers to GM worldwide. The engines in Saturn products may also be used in other GM makes and models.

UPDATED SERVICE INFORMATION

Saturn retailers receive useful service bulletins about Saturn products. See your retailer for more information.

GM MOBILITY

GM Mobility assists people with unique transportation needs by offering a variety of resources, including aftermarket adaptive equipment. Speak to a knowledgeable Assistance Center representative at 1-800-323-9935 (TTY users: 1-800-833-9935) or visit gmmobility.com for more information.

©2006 Saturn Corporation. Saturn and its logo are registered trademarks of Saturn Corporation. OUTLOOK is a trademark of Saturn Corporation. OUTLOOKY07.



WHEN YOU GET A SATURN, YOU GET SATURN.

From the engineers who created your OUTLOOK to the Saturn team member who hands you the keys, all Saturn people consider customers the most important part of what they do. You'll feel that on your first visit to a Saturn retailer, a place that's home to people who give you much more than a car. You'll get straightforward answers. You'll get a no-hassle experience and no-haggle prices. You'll get our Vehicle Exchange Program¹, giving you 30 days to make sure you feel great about your car. You'll also get the best coverage in America, including Roadside Assistance, Courtesy Transportation and the GM 100,000 Mile/5 Year limited powertrain warranty². And because it's a Saturn, you'll get as much attention after you're a Saturn owner as you did when you first walked into the showroom.

¹ See page 28 for details about Saturn's 30-day Vehicle Exchange Program. ² Whichever comes first. See page 28 or your Saturn retailer for terms of this limited warranty.



5 YEAR POWERTRAIN



START EXPECTING THE UNEXPECTED.

Never before have we offered so many different ways to drive. The newest generation of Saturn is represented by the stunning SKY[®] roadster and the SKY Red Line Turbo, each available on a limited basis; the distinctive and engaging AURA[™] mid-size sedan; the roomy eight-passenger OUTLOOK crossover; and the VUE[®] compact SUV, also available as the affordable VUE Green Line hybrid. For a car that's small in size but big in features, test-drive the ION[®] sedan or ION quad coupe. And for a gratifying home away from home, look into the seven-passenger RELAY[®] van. To see more of the next generation of Saturn, visit saturn.com.



Like always. Like never before.™



There is a way to recapture the world's imagination. To make pulses rise and heads turn. To make innovation as basic as breathing, and design more thoughtful. There is a way to stay the same in one way, and evolve in another. To build a car company that believes there is a way to do things differently. There is a way to treat people like always. There is a way to make cars like never before. Saturn. Like always. Like never before.

saturn.com