

How about a little single-tasking? How about turning off the phones that play music, movies, and games all at once? How about drinking your coffee at the coffee shop? **When did we start doing everything simultaneously?** How about doing one thing at a time? Why don't we set the distractions aside and really enjoy one thing, like hugging tight corners on a firm **European-tuned suspension?**¹ Or giving all your attention to the road as you sit in a **premium sport seat**² and step on the gas of a **high-output ECOTEC™ engine?** How about **focusing on the thrill of driving again?** Simply driving and nothing more.

Rethink the task at hand.

Introducing the 2008 Saturn ASTRA® Sport Compact.



Rethink **SHOW-OFF.**

What's wrong with looking good and knowing it? What's wrong with showing off sleek styling and meticulous attention to detail? If you got it, shouldn't you flaunt it? Isn't it a good thing if people can't take their eyes off you? Aren't oohs and aahs a form of compliment? We think so. That's why when we designed the 2008 ASTRA, we made sure that it was not only impressive in the performance but also in the looks department.



What's wrong with
hogging
the **SPOTLIGHT?**



Introducing the Saturn ASTRA 3-Door.



Sorry, streetlights.

The ASTRA's halogen, cat-eyed, projector-beam headlamps will take it from here. The headlamps are also equipped with daytime running lamps, so perhaps we should apologize to the sun as well.



Foghorns are so loud and impractical.

That's why we designed a fashionable yet functional halogen foglamp. Its bright projector lens helps to cut through that thick and stubborn fog. And it does it all without making a sound.



Nice rear end.

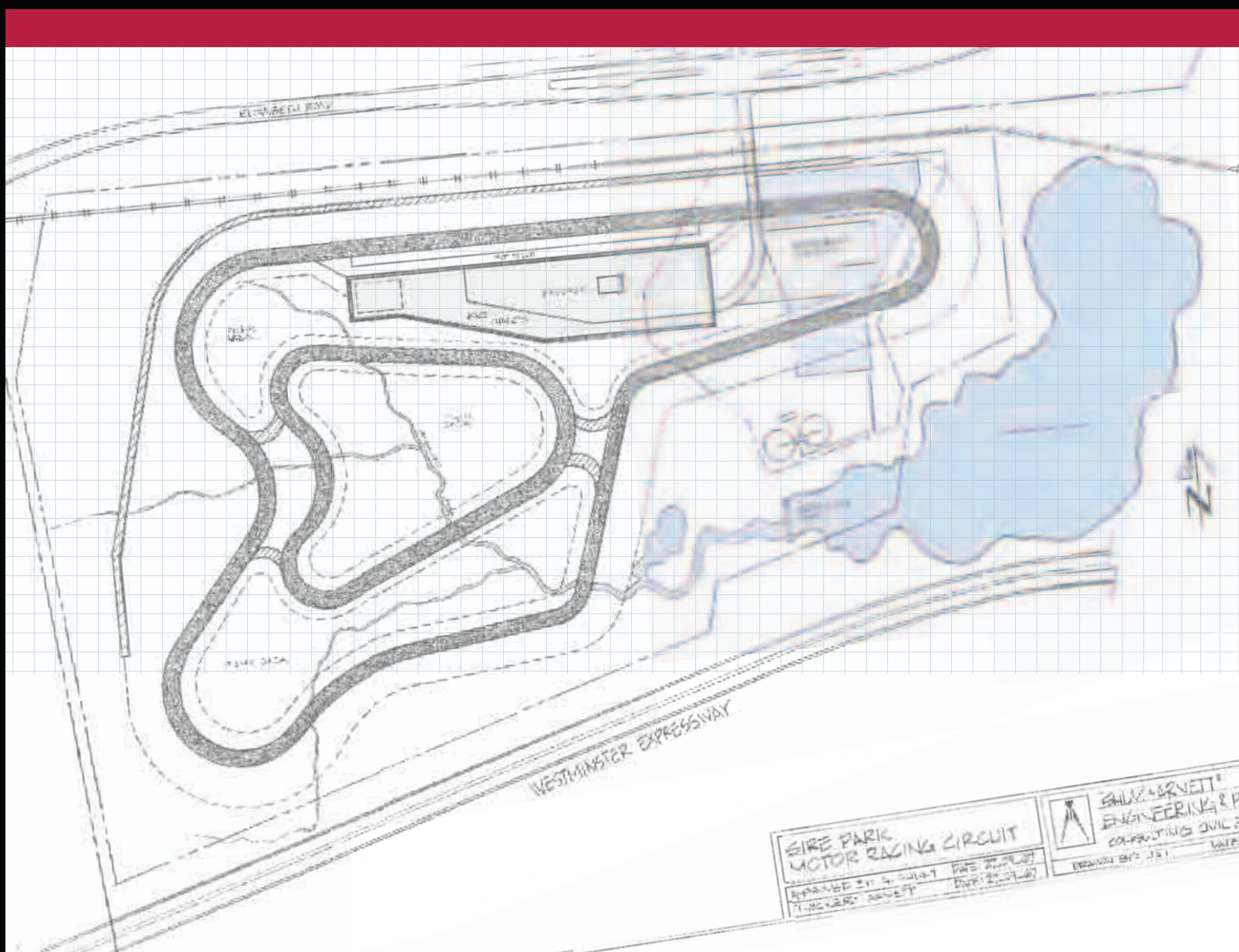
Like the headlamps, the tail lamps are stretched around the corners in order to give the ASTRA a wide and low appearance. They sit inside a jewel-like housing and are wrapped with a clear lens, which makes the tail lamps look both subtle and flashy at the same time.

Road cleats.

Certain activities have special footwear. Considering there are tennis shoes, soccer cleats and hiking boots, why should driving be any different? That's why the 2008 ASTRA 3-Door XR has 17-inch aluminum alloy wheels with low-profile tires or available 18-inch alloys with sticky performance tires. They are designed to help you grip the road to create the kind of confident handling you need to perform.

Precise handling from across the pond.

Currently, the 2008 ASTRA is one of the most popular cars in Europe. It has proven itself worthy of Europe's high-speed motorways and twisty mountain roads. It has direct, linear steering and dynamic handling, making the driver feel connected to the road.





Best of both worlds.

The high-output 1.8-liter, 16-valve ECOTEC™ engine, with its flat torque curve and estimated¹ 24 mpg city/32 mpg highway, will give you both the power and capability to get you where you want to go. May we suggest a really long, twisty mountain road?



Feel the pavement.

Sporty does not have to mean stiff. With a 15mm lower ride height than our XE model, the sport-tuned suspension and sophisticated torsion beam rear axle on the 3-Door XR were designed for the twisting roads of Europe. They ensure responsive handling while delivering a smooth, comfortable ride. So whether you are off on windy mountain switchbacks or long, flat straightaways, you will feel more of the pavement and less of the potholes.



Instantaneous performance.

The ASTRA has two available transmission options: the sporty 5-speed manual, which provides complete driver control, and the electronically controlled 4-speed automatic, which doesn't sacrifice performance due to an automatic throttle kick-down. When prompted, the 4-speed automatically downshifts, giving you instantaneous performance — and goosebumps.



¹Manual transmission. Based on GM testing. Official EPA estimates not available at time of printing.



1

The **Command Center.**

With a digital Driver Information Center, rain-sensing wipers, flash-to-pass headlamps, a rake and telescoping steering column, automatic lighting control, available illuminated door handles and heated seats, "Command Center" is really the only way to describe all the technology in the 2008 ASTRA.



1. Stay connected.

We designed our premium sport seats to hug the shape of your body, making you feel more in tune with the car and the road. The high-sport seats that come on the 3-Door XR are mounted with a 15mm lower ride height than on XE models, and they have prominent thigh and back bolsters for ideal driver positioning.

2. Thumbs up.

How skilled are your opposable thumbs? The XR models put 'em to the test with steering wheel-mounted controls that make switching between preset radio stations and your favorite CD tracks easy.

3. Your official soundtrack.

ASTRA XR models come with an AM/FM/CD player and MP3 playback through seven speakers. There's also an available Advanced Audio Package with a six-disc CD changer, which offers a seven-band graphic equalizer that is displayed on the driver information screen. So when you are not busy taking control of the road, you can take control of your tunes.

Have you forgotten how to drive already? What happened to that feeling you had when you first got your license? What happened to getting into your car even though you had nowhere to go? Remember how it felt to know the world suddenly had far fewer boundaries? Remember how every corner and lane change was a thrill? Well, we do. That's why the 2008 ASTRA was designed to make driving fun again, not just a way to get from here to there. **Just something to rethink about.**





Who says
more doors
mean less
FUN?





Introducing the ASTRA 5-Door.



Where are all the backseat **THRILL SEEKERS?**

Who started this backseat-driving thing? When did the backseat become an extension of the driver's seat and cease to be the second row in an unforgettable thrill ride? When did the passengers stop looking outside and start looking over the driver's shoulder? Hey, passengers. Time to enjoy the ride again. Time to relax in the ASTRA's roomy backseat, hold on tight, and watch the world go by outside your large rear windows and available dual-panel power sunroof.

1. A little more atmosphere.

The available dual-panel power sunroof is the largest in its class,¹ letting in more fresh air and more light. Two things that we figured you would enjoy.

2. Multiple choice interior.

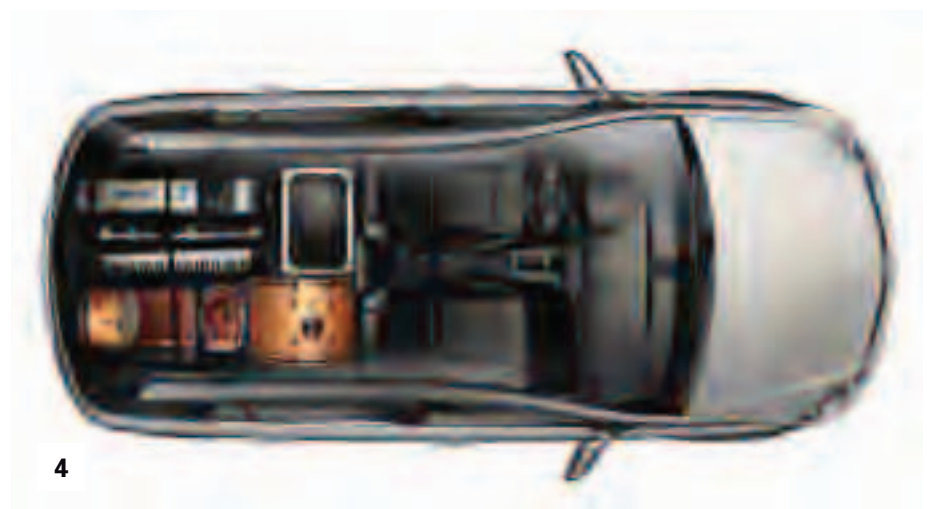
The 5-Door's interior has a removable cargo cover and 60/40-split folding rear seatbacks that fold flat to create 44.7 cubic feet² of cargo space. It easily accommodates a few friends, some gear for the weekend, or 44.7 cubic feet² of anything else you may need.

3. Easy access design.

The large, open door frames and windows in the rear were designed to give the backseat passengers a wider field of view and make getting in and out of the backseat effortless. Well, assuming that you will want to get out at some point.

4. Bring it along.

Cargo shorts may not always be in style. But one thing that will never go away is the fact that you are going to want to haul some stuff around from time to time, whether you decide to use your ASTRA 5-Door as a band van, surf wagon, or school bus. The large rear hatch and total interior volume of 104.6 cubic feet² make it easy to access all the things that you can't live without.



When did **safety** become a **LUXURY**?

Safety should be a priority, as it was when we designed the ASTRA with **six air bags** standard,¹ **four-wheel ABS** for enhanced stability when stopping, a Pedal Release System, a strong unibody structure utilizing high-strength steel, and available electronic stability control and **Traction Control** to keep you headed in your desired direction, which ultimately helps to protect you and your precious cargo.



Air bags.

That's right, air bags, plural, not air bag. The ASTRA comes with six standard air bags,¹ which include dual-stage front air bags that can instantly detect the severity of the collision and deploy at one of two levels. Head curtain side air bags are designed to instantly drop down to help protect front and outboard rear-seat occupants during lateral impact. And front seat-mounted, side-impact air bags provide thorax and pelvis protection to the driver and front passenger during certain side impacts.

¹ Air bag inflation can cause severe injury or death to anyone close to the bag when it deploys. Be sure every occupant is properly restrained. See inside back cover of this brochure for an important note about air bags and child safety. ² StabiliTrak comes standard on 3-Door models and is available on 5-Door models. ³ Call 1-888-4ONSTAR (1-888-466-7827), visit onstar.com, and see inside back cover for system limitations and details. ⁴ Success varies with conditions. ⁵ Turn-by-Turn Navigation requires Directions & Connections Plan. Not available in certain areas. Visit onstar.com for coverage maps.



StabiliTrak®

We figure that you know better than anyone what direction you want to go in. So the 2008 ASTRA is available with StabiliTrak-Stability Control.² It enhances control by using a sophisticated network of sensors to monitor steering angle, individual wheel speed, brake pressure, and lateral speed. Then it analyzes how the driver is steering and how the car is responding. It also works with the ABS and Traction Control to apply brakes or limit engine power to help keep you safe in those slippery situations.



ABS with Cornering Brake Control.

Coming to a screeching halt is not as good as a quiet halt. That's why ABS regulates individual wheel speed for enhanced stability and improved steerability in braking situations. ASTRA's brake system also features Cornering Brake Control to help reduce the chance of oversteering when braking through turns.



Stop!

We equipped the ASTRA's four-wheel disc braking system with large-diameter steel rotors for outstanding braking performance.

OnStar®

The most comprehensive in-vehicle security, communications, and diagnostics system.

ASTRA offers one year of OnStar,³ including the Safe & Sound Plan that includes automatic notification of air bag deployment, Stolen Vehicle Location Assistance,⁴ Remote Door Unlock,⁴ Crisis Assist, and a link to emergency services. Turn-by-Turn Navigation⁵ is also available and provides voice-guided directions to practically any destination. But don't worry, the Advisors can't hear you singing your favorite song, unless you want them to.



Feel free to pick a Saturn apart. (We did.)

Quality control is something everyone at Saturn takes seriously. In fact, they don't even need the words "Quality Control" in their job title to make it their number-one priority. It's the responsibility of everyone who touches a Saturn, from the people who design, engineer, assemble and test them to the people who hand you the keys. It's what makes a Saturn, well, a Saturn.

Good genes run in the family.

Say hello to our full line of vehicles, from the small and sporty to the midsize sedan and all the way to an 8-passenger crossover. To learn more, visit saturn.com.



The Saturn showroom has a very familiar address. Yours.

To schedule your at-home or in-office test drive, visit saturn.com to find a participating retailer near you.



Shown from left to right: OUTLOOK,[™] ASTRA 3-door, AURA,[™] SKY,[®] ASTRA 5-door, VUE.[®]

What if a car company didn't act like a car company?

You'd ask yourself, what are they thinking? This can't be right. But it is. In fact, it's what we've been doing since day one. That's the Saturn way. And you notice it the second you walk into a Saturn retailer. We offer a no-hassle, no-haggle philosophy. We give you straightforward answers. We can bring cars to you to test-drive.¹ We give you 30 days to make sure the vehicle you've chosen is the right one.² And you know what? After all is said and done, we wouldn't change a single thing.

Just something to rethink about.

SATURN

**100,000 MILE
WARRANTY**
5-YEAR POWERTRAIN

The amount of care and attention doesn't end the moment you leave the Saturn retailer. You'll get the best coverage in America: the Saturn 100,000-mile/5-year Powertrain Limited Warranty, plus Roadside Assistance and Courtesy Transportation.³

TRANSFERABLE POWERTRAIN LIMITED WARRANTY

This fully transferable warranty is for 2008 Saturn vehicles registered in the U.S. See your Saturn retailer for terms and conditions. Covered for 5 years/100,000 miles (whichever comes first): most engine, transmission, transfer case and axle assemblies.

2008 Accessories



Sport pedals

Rear window shade

Glove box organizer

Side-window weather deflector

ASTRA Specifications/Features

POWERTRAIN	5-DOOR XE/XR	3-DOOR XR
Engine	1.8-liter, DOHC, 16-valve inline-4 ECOTEC™ VVT	1.8-liter, DOHC, 16-valve inline-4 ECOTEC™ VVT
Horsepower (hp/kW @ rpm)	138/103 @ 6,300	138/103 @ 6,300
Torque (lb.-ft./Nm @ rpm)	125/170 @ 3,800	125/170 @ 3,800
Transmission	5-speed manual or 4-speed automatic with neutral idle, winter mode, performance on demand, downhill grade assist	5-speed manual or 4-speed automatic with neutral idle, winter mode, performance on demand, downhill grade assist

CHASSIS

Drivetrain	Front-engine/front-wheel drive	
Body construction	Body frame integral high-strength steel safety cage with front and rear crumple zones and side-impact protection	
Suspension	MacPherson strut front with stabilizer bar and torsion beam rear with integrated stabilizer	Sport-tuned, lowered MacPherson strut front with stabilizer bar and torsion beam rear with integrated stabilizer
Steering	XE: Electro-hydraulic power-assisted XR: Variable-effort, electro-hydraulic power-assisted	Quick-ratio, electro-hydraulic power-assisted
Brakes	4-wheel disc brakes with ABS and Cornering Brake Control	

WEIGHTS AND CAPACITIES

Curb weight (lbs.) manual/automatic transmission	XE: 2,778/2,836 XR: 2,754/2,813	XR: 2,768/2,826
Passenger volume (cu. ft.)	92.4	89.0
Cargo-area volume (cu. ft.) with rear seat up/down ¹	12.2/44.7	12.0/37.8
Fuel/capacity (approx. gal.)	Regular unleaded (87 octane)/12	Regular unleaded (87 octane)/12
Seating capacity	5	5

INTERIOR DIMENSIONS (FRONT/REAR IN.)

Headroom	38.9/38.3	37.8/36.6
Legroom	42.0/35.3	42.3/35.0
Hip room	51.8/51.4	51.3/51.0
Shoulder room	53.9/52.8	53.9/52.7

FUEL ECONOMY ESTIMATES (CITY/HWY)²

	5-DOOR XE	5-DOOR XR	3-DOOR XR
Automatic transmission	24/30	24/30	24/30
Manual transmission	24/32	24/32	24/32

COMFORT AND CONVENIENCE

Air conditioning	○	●	●
Cruise control	●	●	●
Driver Information Center including audio, time and outside temperature display	●	●	●
Floor mats	●	●	●
Power door locks with central locking feature and Remote Keyless Entry	●	●	●
Courtesy lighting and dual reading lamps in front and rear	●	●	●
Premium Trim Package: leather seating surfaces, vinyl door trim, leather-wrapped steering wheel, driver manual lumbar seat adjuster, heated front seats, interior ambient LED lighting	–	○ ³	○
Cloth front bucket seats, reclining with adjustable active head restraints	●	●	–
Cloth front bucket high-sport seats with enhanced bolsters, driver lumbar and seat height adjuster	–	–	●
Easy Entry front sliding seats	–	–	●
Rear 60/40-split flat-folding seat with three adjustable and removable head restraints and retractable dual cupholders in seat cushion	●	●	●
Driver 4-way and passenger 2-way manual seat adjuster	●	●	●
Heated front seats	○ ⁴	○ ⁵	○ ⁵
Three-spoke steering wheel with rake and telescoping steering column	●	●	●
Steering wheel-mounted audio and Driver Information Center controls	–	●	●
Sunglass storage, overhead	●	●	●
Driver and front passenger illuminated vanity mirrors	●	●	●
Power windows with Express-Down	●	●	●
Front console with cupholder and 12-volt power outlet	●	●	●
Dual-panel power sunroof with electric sunshade	○ ⁶	○	–
Power-adjustable, manual folding, heated side mirrors	●	●	●
Body-colored bodyside moldings, door handles and outside mirrors	●	●	●
Touchpad liftgate, cargo light and removable cargo cover	●	●	●
Front intermittent windshield wipers with RainSense™ feature	●	●	●
Rear wiper with washer	●	●	●
16-inch steel wheels with full wheel cover and P205/55R16 all-season touring tires	●	–	–
16-inch alloy twin-spoke wheels and P205/55R16 all-season touring tires	○	●	–
17-inch alloy ten-spoke wheels and P225/45R17 all-season performance tires	–	–	●
Sport Handling Package: StabiliTrak®-Stability Control, lowered sport suspension, quick-ratio power steering, 17-inch five-spoke alloy wheels, and P225/45R17 all-season performance tires	–	○	–
18-inch alloy star-spoke wheels and P215/45R18 summer-only performance tires ⁷	–	–	○

SAFETY AND SECURITY

Dual-stage driver and front passenger air bags with Passenger Sensing System ⁸	●	●	●
Thorax and pelvis side-impact air bags for driver and front passenger ⁸	●	●	●
Front and rear outboard head curtain side air bags ⁸	●	●	●
Height-adjustable front safety belts with pretensioners	●	●	●
Lower Anchorages and top Tethers for CHildren (LATCH) in all three rear seating positions	●	●	●
Active front seat head restraints	●	●	●
StabiliTrak-Stability Control and Traction Control	○	○	●
Halogen headlamps with automatic exterior lamp control and daytime running lamps	●	●	●
Front projector-beam foglamps	–	●	●
Turn signal indicator with lane-change signaling feature	●	●	●
Pedal Release System	●	●	●
Tire Pressure Monitor System	●	●	●
Theft-deterrent system	●	●	●
Child security locks	●	●	●
OnStar® with one-year Safe & Sound Plan ⁹	●	●	●

ENTERTAINMENT SYSTEMS

AM/FM stereo with CD player and 6 speakers	●	–	–
AM/FM stereo with CD player, MP3 playback and 7 speakers	–	●	●
Advanced Audio Package: AM/FM stereo with 6-disc CD changer and MP3 playback, 7-band equalizer, enhanced information display and 7-speaker premium audio system	–	○	○

● = standard ○ = available – = not available

1 Cargo and load capacity limited by weight and distribution. **2** Based on GM testing. Official EPA estimates not available at time of printing. **3** Not available at start of production. **4** Available with cloth seats. **5** Available with cloth seats or as part of Premium Trim Package. **6** Requires air conditioning. **7** Summer-only tires tend to wear faster and are more susceptible to damage from road hazards or curb impact than standard profile tires. This type of damage is not covered by the GM New Vehicle Limited Warranty. You may want to get different tires if you expect to drive in winter conditions. See your retailer for proper tire selection. **8** See panel on the left for important information about air bags, including a note about child safety. **9** Call 1-888-4ONSTAR (1-888-466-7827), visit onstar.com or see panel on the left for system limitations and details.

- Front molded splash guards
- Premium all-weather floor mats
- Side-window weather deflectors (front & rear)

- Cargo liner

- Rear cargo convenience nets

- Rear window shade

- Glove box organizer

- Sport pedals

- Smoker's Package

- Wheel locks

- First-aid kit

Fully Backed By Saturn. Saturn Accessories permanently installed at the time of new-vehicle delivery are covered under the New Vehicle Limited Warranty. If installed after delivery, coverage (parts and labor) is for the balance of the New Vehicle Limited Warranty or a minimum of 12 months/12,000 miles (whichever comes first). Saturn Accessories not requiring installation or purchased over the counter carry a 12-month warranty (parts only). Does not apply to licensed products.

IMPORTANT WORDS ABOUT THIS CATALOG

We have tried to make this catalog comprehensive and factual. We reserve the right, however, to make changes at any time, without notice, in prices, colors, materials, equipment, specifications, models and availability. Specifications, dimensions, measurements, ratings and other numbers in this catalog and other printed materials provided at the retailer or affixed to vehicles are approximates based upon design and engineering drawings and prototypes and laboratory tests. Your vehicle may differ due to variations in manufacturer and equipment. Because some information may have been updated since the time of printing, please check with your Saturn retailer for complete details. Saturn reserves the right to lengthen or shorten the model year for any product for any reason, or to start and end model years at different times.

A NOTE ABOUT AIR BAGS AND CHILD SAFETY

Always use safety belts and the correct child restraint for your child's age and size. Even in vehicles equipped with air bags and the Passenger Sensing System, children are safer when properly secured in a rear seat in an appropriate infant, child or booster seat. Never place a rear-facing infant restraint in the front seat of any vehicle equipped with an active frontal air bag. Air bag inflation can cause severe injury or death to anyone too close to the bag when it deploys. Be sure every occupant is properly restrained. See your vehicle owner's manual and child-safety seat instructions for more information.

ONSTAR® INFORMATION

OnStar services require vehicle electrical system (including battery), wireless service and GPS satellite signals to be available and operating for features to function properly. OnStar acts as a link to existing emergency service providers. Subscription Service Agreement required. Call 1-888-4ONSTAR (1-888-466-7827) or visit onstar.com for OnStar's Terms and Conditions, Privacy Policy, and system limitations and details.

SATURN'S VEHICLE EXCHANGE PROGRAM

Within the first 30 days or 1,500 miles of delivery, whichever comes first, the original purchaser may exchange his or her Saturn vehicle if not completely satisfied. In the event that an owner returns his or her vehicle, he or she will exchange it for another 2008 Saturn vehicle. See retailer for limitations and restrictions. All the same factory-supported initiatives will be included on the exchange vehicle that were on the original vehicle. The vehicle must be returned in the condition in which it was delivered, without damage or excessive wear and tear. If non-warranty repairs equal to or greater than \$300 have been performed or are necessary, the vehicle is not eligible to be returned; if less than \$300, the damage must be repaired or the estimate deducted from the credit toward the exchange vehicle.

NEW VEHICLE LIMITED WARRANTY

This warranty is for Saturn vehicles registered in the United States. See your Saturn retailer for terms and conditions. Covered for 3 years/36,000 miles (whichever comes first): the complete vehicle, tires, towing to your nearest Saturn retailer, cosmetic corrosion resulting from defects, repairs made to correct any vehicle defect, with no charge for most warranty repairs. Covered for 6 years/100,000 miles (whichever comes first): rust-through corrosion. Covered for 8 years/100,000 miles (whichever comes first): certain hybrid components. See retailer for details.

CORROSION PROTECTION

Saturn vehicles are designed and built to resist corrosion. All body and sheet metal components are warranted against rust-through corrosion for 6 years or 100,000 miles, whichever comes first. Application of additional rust-inhibiting materials is not required under the corrosion coverage and none is recommended. See your Saturn retailer for terms of this limited warranty.

AN IMPORTANT NOTE ABOUT ALTERATIONS AND WARRANTIES

Installations or alterations to the original equipment vehicle (or chassis) as distributed by GM are not covered by the Saturn New Vehicle Limited Warranty. The special body company, assembler, equipment installer or upfitter is solely responsible for warranties on the body or equipment and any alterations (or any effect of the alterations) to any of the parts, components, systems or assemblies installed by GM. GM is not responsible for the safety or quality of design features, materials or workmanship of any alterations by such suppliers.

ASSEMBLY

Saturn vehicles and their components are assembled or produced by different operating units of GM, its subsidiaries or suppliers to GM worldwide. We sometimes find it necessary to produce Saturn vehicles with different or differently sourced components than originally scheduled. Because some options may be unavailable when your vehicle is assembled, we suggest you verify that your vehicle includes the equipment you ordered, or if there are changes, that they are acceptable to you.

ENGINES

Saturn products are equipped with engines produced by GM Powertrain or other suppliers to GM worldwide. The engines in Saturn products may also be used in other GM makes and models.

FUEL ECONOMY

Commencing with 2008 model-year vehicles, EPA revised its methods for estimating vehicle fuel economy. The new test methods will likely lower mpg estimates as compared to 2007 and previous model-year vehicles. These new methods are intended to better represent current driving styles, varying road and weather conditions, and certain other external factors.

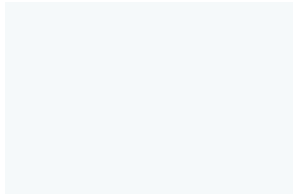
UPDATED SERVICE INFORMATION

Saturn retailers receive useful service bulletins about Saturn products. See your retailer for more information.

GM MOBILITY

GM Mobility assists people with unique transportation needs by offering a variety of resources, including aftermarket adaptive equipment. Speak to a knowledgeable Assistance Center representative at 1-800-323-9935 (TTY users: 1-800-833-9935) or visit gmmobility.com for more information.

Exterior Paint



Arctic White



Star Silver



Twilight Blue



Silver Sand



Black Sapphire

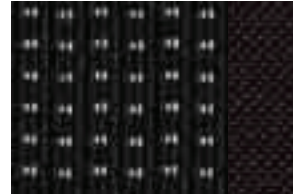


Salsa Red

Interior Fabrics



XE Charcoal



XR Charcoal

Interior Leather



XR Charcoal

Color Combinations

EXTERIOR PAINT	CLOTH: XE	CLOTH: XR	AVAILABLE LEATHER: XR
Arctic White	Charcoal	Charcoal	Charcoal
Star Silver	Charcoal	Charcoal	Charcoal
Twilight Blue	Charcoal	Charcoal	Charcoal
Silver Sand	Charcoal	Charcoal	Charcoal
Black Sapphire	Charcoal	Charcoal	Charcoal
Salsa Red	Charcoal	Charcoal	Charcoal

Dimensions: 5-Door XE/XR



Wheels



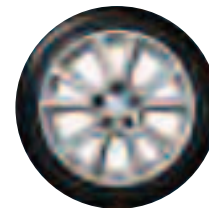
16" STEEL WITH FULL COVER
(5-Door XE)



16" ALLOY
(Optional on 5-Door XE; 5-Door XR)



17" ALLOY
(Optional on 5-Door XR)

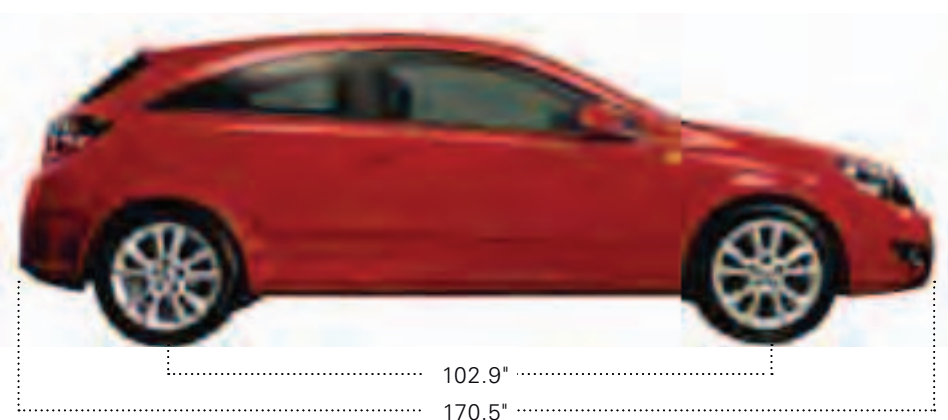
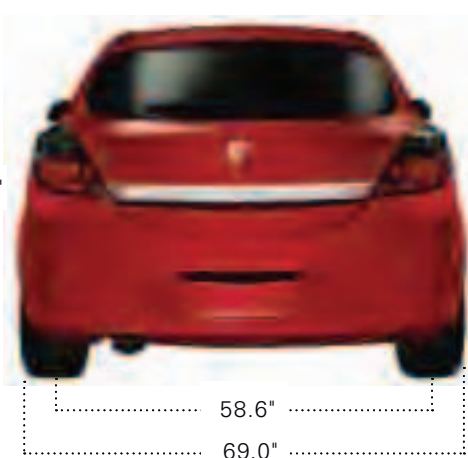


17" ALLOY
(3-Door XR)



18" ALLOY
(Optional on 3-Door XR)

Dimensions: 3-Door XR



See all of our vehicles at SATURN.COM

SKY
Roadster

ASTRA
Sport Compact

AURA
Sport Sedan

VUE
Compact SUV

OUTLOOK
Crossover

Saturn 2008 **ASTRA**

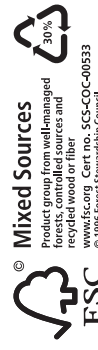
Rethink.



SATURN



This brochure is printed on 60-lb. Environment Ultra Bright FSC-Certified Paper made with 20% FSC-Certified Virgin Fiber and **80% Post-Consumer Fiber**. The paper comes entirely from Green-e Certified renewable energy, and it's Green Seal-Certified as well as Certified Processed Chlorine-Free (PCF) by the Chlorine Free Product Association (CFPA). **It represents Saturn's commitment to helping the environment.**



Mixed Sources
Product group from well-managed forests, controlled sources and recycled content. For more information, visit www.fsc.org. SCS-CO-00533
© 1986 Forest Stewardship Council



SATURN