

SKY



ASTRA 3-Door



AURA



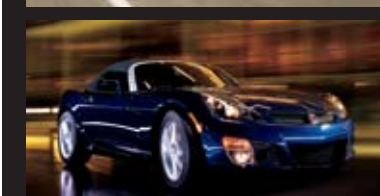
VUE



VUE Red Line



OUTLOOK



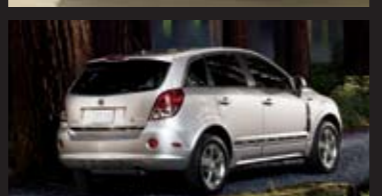
SKY Red Line



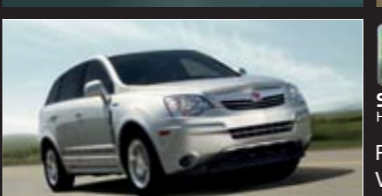
ASTRA 5-Door



AURA Hybrid



VUE Hybrid



VUE 2-Mode Hybrid



Rethink green. The AURA Hybrid, VUE Hybrid and VUE 2-Mode Hybrid. (limited availability)

See all our vehicles at saturn.com

Rethink.



09 Saturn **OUTLOOK**



The philosophy of Rethink has been ours since day one. Rethink is treating customers like people. Rethink is buying made easy. Rethink is style made accessible. Rethink is a greener approach. Rethink is remarkably fuel-efficient vehicles. Rethink is always pushing yourself to come up with a better idea. Rethink is Saturn.



OUTLOOK XR in Red Jewel Tintcoat
with available Touring Package

Big, meet smart. Smart, meet big.

The 2009 Saturn OUTLOOK™ Crossover



Saturn's commitment to helping the environment

Our devotion doesn't stop at building responsible transportation. We're also doing the little things, like printing this brochure on FSC-certified (Forest Stewardship Council) paper, which includes a minimum of 30% post-consumer recovered fiber. Additionally, electricity used in the manufacturing process is generated from renewable resources. Please help us out and recycle this brochure when you're done.

Cert no. SPP-COC-2068
www.fsc.org
© 1996 Forest Stewardship Council



EPA-estimated **17** mpg city, **24** mpg highway

OUTLOOK XR in White Diamond Tricoat with available Touring Package and accessory assist steps

Rethink big. The OUTLOOK. The EPA-estimated 24 mpg highway, 8-passenger crossover. It offers the best fuel economy of any 8-passenger crossover.¹ It's even assembled in a plant that received gold certification from the U.S. Green Building Council's LEED program.² With plenty of room for everyone and their stuff and topped with a lot of style, it's the right-sized crossover from the company that's rethinking everything.



Powertrain Warranty

Every 2009 Saturn gets the best coverage in America: the Saturn 100,000-mile/5-year³ Transferable Powertrain Limited Warranty, plus Roadside Assistance and Courtesy Transportation.

¹ Based on 2008 GM Mid Utility-Crossover segment and EPA-est. 17 mpg city, 24 mpg hwy. Excludes other GM vehicles. ² U.S. Green Building Council's Leadership in Energy and Environmental Design (LEED) program. ³ Whichever comes first. See retailer for details.



BOSE **5.1 digital surround sound**

The available 10-speaker Bose® Surround Sound System is custom engineered to the unique acoustics of the OUTLOOK. The system is complemented with XM Radio¹ and ready for your entire music library with an iPod^{®2}/MP3 auxiliary input jack. Steering wheel audio controls are standard on the XR model.

Bluetooth wireless technology

Our comprehensive, convenient, and easy-to-use in-vehicle technology allows you to connect select Bluetooth^{®3} compatible cell phones to the OUTLOOK for hands-free calling.

Navigation

The easy-to-read-and-operate available DVD-based touchscreen navigation system will get you where you need to go.⁴ Use the available XM NavTraffic^{®5} for live traffic data, traffic accidents, and estimated travel time along your chosen route.

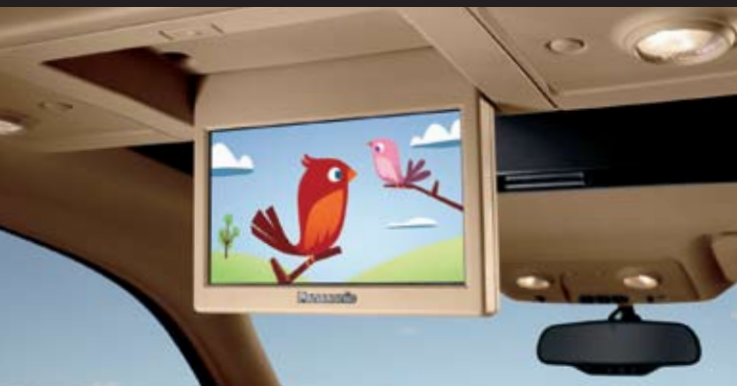
OnStar[®] Every 2009 Saturn includes a one-year subscription to the OnStar Safe & Sound Plan.⁶ Beyond our standard safety and security features, you get monthly vehicle diagnostic reports via e-mail, as well as Roadside Assistance. OnStar can even flash your lights and sound your horn if you can't find your vehicle. You can easily connect with an Advisor who can unlock your door or help authorities locate your vehicle if it is stolen.⁷ If your vehicle is equipped with a compatible navigation system and active Directions & Connections Plan, you can use OnStar Destination Download to receive destinations and millions of points of interest on the go. Also available for vehicles without a navigation system is eNAV,⁸ which allows you to locate your destination online via MapQuest.com and allows OnStar to send you turn-by-turn driving directions.

¹ Available in the 48 contiguous United States. Required \$12.95 monthly subscription sold separately after three trial months. All fees and programming subject to change. Subscription subject to customer agreement. For more information, visit gm.xradio.com. ² iPod is a trademark of Apple Inc., registered in the U.S. and other countries. ³ The Bluetooth trademark is owned by Bluetooth SIG, Inc., and any use of such marks by General Motors is under license. Go to www.gm.com/bluetooth to find out which Bluetooth phones are compatible with the vehicle. ⁴ Map coverage not available in Puerto Rico, Virgin Islands, and portions of Canada. ⁵ XM NavTraffic only available in select markets. Service fees apply. For more information, see www.xradio.com/navtraffic. ⁶ Call 1-888-4ONSTAR (1-888-466-7827), visit onstar.com, and see inside back cover for details and system limitations. ⁷ Remote Door Unlock and Stolen Vehicle Location Assistance success may vary with conditions. ⁸ Requires Directions & Connections Plan. Not available in certain areas and with Verizon Wireless Nationwide Plan with OnStar. Visit onstar.com for coverage map.



Open-air driving

We give you the choice in the OUTLOOK of upgrading to an available power sunroof with a generous second-row skylight that brings the great outdoors indoors.



Backseat showtime

Keep even your most difficult passengers happy with an available rear seat DVD entertainment system with a wireless remote, set of headphones, and input jacks for audio and game players.

Rethink people mover

The OUTLOOK interior doesn't sacrifice style for lifestyle. The XR models feature standard premium leather-appointed seats and every OUTLOOK offers a range of seating choices, like a second-row bench seat and available captain's chairs—both with SmartSlide™, which provides easy access to the adult-sized third row and plenty of second- and third-row legroom flexibility.



OUTLOOK XR in Tan



Rethink cargo space. There's enough room in the OUTLOOK for two families. The cargo space dares you to buy in bulk. Even with the third row occupied, it offers 24.1 cubic feet of cargo room in back! You can configure the seats to fit more cargo or people, and a convenient power liftgate is available for easy loading and access.

115.9

cubic feet of space¹

The 60/40-split second- and third-row seats fold flat, providing you with space to transport longer items.

¹ Cargo and load capacity limited by weight and distribution.



5-star

crash safety rating¹

The 2009 OUTLOOK received the highest possible crash safety rating—5 stars—in frontal and side-impact crash testing.¹ It has a total of six standard air bags² as well as GM's rollover sensing system, which can preemptively activate head curtain side air bags if sensors determine a rollover is imminent, keeping them inflated for an extended length of time. Its technology is designed to help keep your most precious cargo safe and secure.



OnStar[®] Included in the OUTLOOK's one-year subscription to the OnStar Safe & Sound Plan³ is Automatic Crash Response. Should the air bags deploy, OnStar can automatically attempt to contact you in your vehicle. If there is no response, emergency personnel will automatically be contacted. The red emergency button in the vehicle can also be used if you are in an emergency situation that does not involve air bag deployment. Connect your vehicle to OnStar and a live Advisor will contact emergency services for you. On call and ready when you need it most, OnStar helps make safety a standard feature in every OUTLOOK we build.



Watch your back

For your convenience we made the OUTLOOK available with a rearview camera system that allows drivers to see certain stationary objects while moving in reverse at low speeds.

¹ Side-impact crash test rating is for a model tested with standard head curtain side air bags (SABs). Government star ratings are part of the National Highway Traffic Safety Administration's (NHTSA's) New Car Assessment Program (www.safercar.gov). ² Air bag inflation can cause severe injury or death to anyone close to the bag when it deploys. Be sure every occupant is properly restrained. See inside back cover of this brochure for an important note about air bags and child safety. ³ Call 1-888-4ONSTAR (1-888-466-7827), visit onstar.com, and see inside back cover for details and system limitations. OnStar acts as a link to existing emergency service providers.



OUTLOOK XR AWD in Carbon Flash

Rethink solid. Built as a body-frame integral structure, the OUTLOOK rides smoothly and handles impressively well. Its exceptional comfort and agility come from a long wheelbase, wide stance and four-wheel independent suspension. For more challenging road surfaces, available intelligent all-wheel drive delivers performance and traction when you need them most.



ABS, Traction Control and StabiliTrak®

We've equipped the OUTLOOK with StabiliTrak®-Stability Control—a system that uses the vehicle's electronic brake and traction control capabilities to provide added stability—plus ABS for more precise, controlled braking performance, and Traction Control for enhanced traction.



OUTLOOK XR in Midnight Blue with available features

Rethink give and take. The OUTLOOK tows up to 4,500 pounds¹.



Towing power

The OUTLOOK features a new SIDI (Spark Ignition Direct Injection) V6 engine. It delivers performance without being greedy and features increased horsepower and torque. The 6-speed automatic transmission with available tow/haul mode ensures optimal towing performance.

¹ Maximum trailer ratings are calculated assuming a properly equipped base vehicle plus driver. See retailer for details.



OUTLOOK XE

SELECT XE STANDARD EQUIPMENT:

- 281-hp, 3.6-liter, SIDI, DOHC, 24-valve V6 engine with Variable Valve Timing (VVT)
- 6-speed automatic transmission
- 4,500-lb max towing capability¹
- Stabilitrak®-Stability Control with Rollover Mitigation and Traction Control
- Four-wheel anti-lock disc brakes
- 18-inch painted alloy wheels with 255/65R18 all-season tires
- 8-passenger seating
- Front bucket seats, second-row 60/40-split bench seat with Smart Slide™ and third-row, flat-folding 60/40-split bench seat
- Front center console with sliding armrest and storage compartment



OUTLOOK XR

XR ADDS:

- AM/FM stereo with CD/MP3 player and six speakers
- Air conditioning with rear seat controls
- XM Radio with three trial months of service²
- OnStar® with one year Safe & Sound Plan³
- Remote Keyless Entry
- Power windows with driver express-down and lockout features
- Power-adjustable side mirrors
- Dual-stage frontal air bags, front row seat-mounted side and third-row head curtain side air bags⁴ with Passenger Sensing System
- Metallic accent trim
- XR ADDS:
 - 288-hp, 3.6-liter, SIDI, DOHC, 24-valve V6 engine with VVT
 - Dual-outlet, stainless-steel exhaust
 - Projector-beam foglamps
 - 18-inch machined alloy wheels with 255/65R18 all-season tires
 - Dual-zone automatic climate control
 - Leather-wrapped steering wheel
 - Steering wheel-mounted audio controls
 - Premium Trim Package: leather-appointed first- and second-row seats, heated driver and front passenger seats, and 8-way power driver's seat adjuster
 - Wood-grain appearance accent trim
 - Hands-free phone system for select Bluetooth®⁵ compatible phones
 - Luggage rack side rails
 - Body-colored side moldings
 - Side mirrors: heated, power-adjustable, power-folding, body-color and driver-side auto dimming, with integrated turn signals

¹ Maximum trailer ratings are calculated assuming a properly equipped base vehicle plus driver. See retailer for details. ² Available in the 48 contiguous United States. Required \$12.95 monthly subscription sold separately after three trial months. All fees and programming subject to change. Subscription subject to customer agreement. Visit gm.xmradio.com for more information. ³ Call 1-888-4ONSTAR (1-888-466-7827), visit onstar.com, and see inside panel on right for details and system limitations. ⁴ See inside panel on right for important information about air bags, including a note about child safety. ⁵ The Bluetooth trademark is owned by Bluetooth SIG, Inc., and any use of such marks by General Motors is under license. Go to www.gm.com/bluetooth to find out which Bluetooth phones are compatible with the vehicle.

Exterior Colors



Cream White



Quicksilver



Cocoa



Midnight Blue



Garnet



White Diamond Tricoat
(extra-cost option)



Carbon Flash
(extra-cost option)



Gold Mist

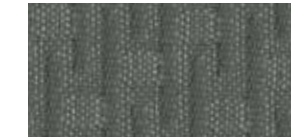


Silver Moss



Red Jewel Tintcoat
(extra-cost option)

Standard Interior Fabrics



XE Gray



XE Tan



XE Black

Available Interior Leathers



XE Gray/XR Gray
(standard on XR)



XE Tan/XR Tan
(standard on XR)



XE Black/XR Black
(standard on XR)

Color Combinations

EXTERIOR PAINT	CLOTH XE	AVAILABLE LEATHER XE	LEATHER XR
Cream White	Gray/Tan/Black	Gray/Tan/Black	Gray/Tan/Black
Quicksilver	Gray/Black	Gray/Black	Gray/Black
Cocoa	Tan/Black	Tan/Black	Tan/Black
Midnight Blue	Gray/Tan/Black	Gray/Tan/Black	Gray/Tan/Black
Garnet	Gray/Tan/Black	Gray/Tan/Black	Gray/Tan/Black
White Diamond Tricoat (extra-cost option)	Gray/Tan/Black	Gray/Tan/Black	Gray/Tan/Black
Carbon Flash (extra-cost option)	Gray/Tan/Black	Gray/Tan/Black	Gray/Tan/Black
Gold Mist	Tan/Black	Tan/Black	Tan/Black
Silver Moss	Tan/Black	Tan/Black	Tan/Black
Red Jewel Tintcoat (extra-cost option)	Tan/Black	Tan/Black	Tan/Black

Wheels



18" PAINTED ALLOY
(XE FWD/AWD)



18" MACHINED ALLOY
(XR FWD/AWD)



20" PAINTED/POLISHED ALLOY
(Optional on XR) Use only GM-approved tire and wheel combinations. See your retailer for details.

