

2015 HYUNDAI

SONATA

HYBRID



SMART MOVE.

Is there a smarter way to move than the Sonata Hybrid? After all, it's earned a 5-Star Overall Safety rating from NHTSA, the U.S. government's official safety arm.¹ And it's a Hyundai – a brand that continues to win fans who like the way we do business. Whether it's offering you America's Best Warranty or the innovative suite of technologies found in Hyundai Blue Link,[®] Sonata Hybrid is flush with new thinking.²

Most importantly, it's a state-of-the-science hybrid driven by next-generation lithium polymer battery technology. Sonata Hybrid uses a polymer gel as the electrolyte in its battery. It's capable of delivering the same power with 25 percent less weight, 40 percent less volume and 10 percent more efficiency than nickel-metal hydride batteries. It also discharges more slowly to maintain available power up to 1.7 times longer than traditional batteries.

The result is a spacious, stylish sedan with an EPA-estimated 40 MPG highway rating.³ Considering all that, it's easy to understand why owners of competing hybrids might turn a bit green with envy.

¹ Government star ratings are part of the National Highway Traffic Safety Administration's New Car Assessment Program (safercar.gov). ² Only use Blue Link and corresponding devices when it is safe to do so. Blue Link is available on most 2014-2015 Hyundai vehicles. Blue Link subscription service agreement required. Features vary by subscription plan. Blue Link service works using CDMA-based cellular networks in the 50 United States. Blue Link service is not available where there is no cellular coverage, particularly in enclosed or remote areas. Service availability may be affected by signal strength, foliage, weather, topographical conditions (mountains) and nearby structures (tall buildings, tunnels) and other factors. For additional details and system limitations, visit HyundaiBlueLink.com. ³ EPA estimates for comparison only. Your actual mileage will vary with options, driving conditions, driving habits and the vehicle's condition.



SONATA HYBRID LIMITED Premium Package in Venetian Red Pearl



ENHANCED AUDIO An Infinity® 400-Watt premium audio system with a 7" color touchscreen and nine perfectly placed speakers adds power and presence to your music.¹ HD Radio® technology with multicasting and a SiriusXM® Satellite Radio three-month free trial come standard.² Prefer your own playlists? Bluetooth audio streaming from your smartphone syncs your music with Sonata Hybrid's audio controls.



HYUNDAI BLUE LINK Search for points of interest with voice commands and download them to the navigation system for turn-by-turn directions. If your Hyundai is stolen, Blue Link can immobilize it. Teenager borrowing the car? Geo-Fence, Speed and Curfew Alerts let you rest easy. A mobile app even lets you lock, unlock and start your car remotely. For a full list of features, visit HyundaiBlueLink.com.



SONATA HYBRID LIMITED
Premium Package in Camel Leather

Modern Design

DO GOOD. AND LOOK GOOD DOING IT.

Intelligence and good looks are always an attractive combination. Case in point: Sonata Hybrid. Its sleek exterior wraps an interior that, thanks to the space-saving lithium polymer battery, offers more passenger room than most typical hybrids – along with plenty of room for luggage in the trunk.

Your first clues that this sedan is truly special? The brushed aluminum-look trim, LED dome lighting and plush seating available in fine-grain leather. Settle into your seat. Feels good, right? Heated seating surfaces for both front-seat passengers are standard, along with an available power driver seat that includes lumbar support. Bluetooth® technology also keeps you relaxed with hands-free access to your phone using very handy voice-recognition control.

Front and center in the cockpit is a standard 4.3" color touchscreen audio system or available 7" touchscreen audio/navigation system that also responds to voice commands. The 7" system features a hybrid display mode that lets you monitor your driving and make the most efficient use of the car's Blue Drive hybrid system. After all, isn't that what led you here in the first place?



DESIGN AND TECHNOLOGY HIGHLIGHTS

(See specifications section for availability by trim)

- PROXIMITY KEY ENTRY WITH PUSH-BUTTON START
- HYBRID TECHNOLOGY DISPLAY
- DUAL-ZONE AUTOMATIC TEMPERATURE CONTROL
- 4.3" COLOR TOUCHSCREEN AUDIO SYSTEM WITH REARVIEW CAMERA
- STEERING WHEEL AUDIO, BLUETOOTH® PHONE AND CRUISE CONTROLS
- POWER DRIVER SEAT WITH LUMBAR SUPPORT³
- HEATED FRONT SEATS
- AVAILABLE PANORAMIC SUNROOF
- AVAILABLE 7" TOUCHSCREEN NAVIGATION SYSTEM

AVAILABLE PREMIUM AUDIO

400 Watts

¹ Available on Sonata Hybrid Limited. ² All SiriusXM services require a subscription, sold separately by SiriusXM after a free 3-month trial period. Fees and taxes apply. All fees and programming are subject to change. Sirius, XM and all related marks and logos are trademarks of Sirius XM Radio Inc. ³ Standard on Sonata Hybrid Limited.



BLUE DRIVE HYBRID SYSTEM Sonata Hybrid can run on gasoline internal combustion, an electric motor, or both simultaneously. Combining gas and battery power delivers performance to the tune of 199 net horsepower.



SMARTER BRAKES Sonata Hybrid uses four-wheel disc brakes with ABS to not only scrub speed – the regenerative braking system also recharges its batteries. At stops, the car's gas engine shuts off, cutting emissions to zero. Prodding the accelerator seamlessly prompts the Hybrid Starter Generator to restart the car's engine in an instant, and off you go.³

Distinctive Engineering

CAN A CAR RUN ON BRAIN POWER?

What kind of performance can you expect from a hybrid? If it's a Sonata Hybrid, you'll enjoy the kind of performance that does all of the thinking, planning and reacting – so all you have to do is relax. And reap the benefits.

The Hyundai Blue Drive hybrid system seamlessly gets the power it needs to drive the wheels from whatever source – gas or electric – suits the situation. And every time you press the brake pedal, Sonata Hybrid helps capture the energy generated during braking and uses it to recharge the battery. So you can drive even further on the electric motor's power and save on gas.

Sonata Hybrid's smarts extend to the realm of safety, where it earned the National Highway Traffic Safety Administration's 5-Star Overall Safety rating. It features the added peace-of-mind of a standard rearview camera to help take the guesswork out of backing up. And it takes America's Best Warranty to a new level with hybrid system coverage for 10 years or 100,000 miles and an industry first – a lifetime hybrid battery warranty.¹



PERFORMANCE AND SAFETY HIGHLIGHTS

(See specifications section for availability by trim)

- FULLY PARALLEL HYBRID SYSTEM
- ADVANCED LITHIUM POLYMER BATTERY
- 6-SPEED AUTOMATIC TRANSMISSION WITH SHIFTRONIC®
- SACHS® AMPLITUDE SELECTIVE DAMPING SHOCK ABSORBERS
- ELECTRONIC STABILITY CONTROL²
- ELECTRONIC BRAKE-FORCE DISTRIBUTION WITH BRAKE ASSIST
- 16" OR 17" ECO-SPOKE ALLOY WHEELS
- PROJECTOR STYLE HEADLIGHTS WITH LED ACCENTS
- LED TAILLIGHTS

SONATA HYBRID FUEL ECONOMY

40 EPA-estimated
MPG highway

SONATA HYBRID LIMITED
Premium Package in Diamond White Pearl



¹ Warranty is non-transferable and not valid on vehicles exported to Korea. ² Electronic Stability Control (ESC) cannot control your vehicle's stability under all driving situations. ESC is not a substitute for safe driving practices. No system, no matter how advanced, can overcome physics or correct poor driving. The driver is always responsible for controlling the vehicle and must use caution to avoid loss of control in all driving conditions. Speed, road conditions and driver steering input will affect whether ESC can help prevent loss of control. See Sonata Hybrid Owner's Manual for details. ³ Engine will not shut off if the hybrid battery charge is low.

2015 SONATA HYBRID STANDARD



KEY STANDARD FEATURES

- 2.4L Atkinson cycle 4-cylinder engine
- Hybrid Starter Generator
- Permanent magnet high-power density motor
- Lithium polymer battery system
- 6-speed SHIFTRONIC® automatic transmission
- Proximity key entry with push-button start
- Dual-zone automatic temperature control
- Electroluminescent gauge cluster
- Premium cloth seating surfaces
- Heated front seats
- Tilt-and-telescopic steering wheel with cruise, audio and Bluetooth® phone controls
- Blue Link® telematics system
- 4.3" color touchscreen audio display
- Rearview camera
- AM / FM / SiriusXM® / CD / MP3 audio system with 6 speakers
- HD Radio® technology with multicasting
- Advanced 4.2" color LCD trip computer with hybrid technology display
- Chrome interior door handles and leatherette door panels
- Electronic Stability Control
- Traction Control System
- 4-wheel disc ABS with Brake Assist and Electronic Brake-force Distribution
- 6-airbag safety system with advanced dual front airbags and Occupant Classification System
- Active front head restraints
- LED headlight accents and LED taillights
- Automatic headlights and front fog lights
- Side mirror turn signal indicators
- 16" Eco-spoke aluminum alloy wheels

2015 SONATA HYBRID LIMITED



KEY STANDARD FEATURES

- Sonata Hybrid Standard Equipment plus:
- + Leather seating surfaces
 - + Leather-wrapped steering wheel and shift knob
 - + Power driver seat with lumbar support
 - + Auto-dimming rearview mirror with compass and HomeLink®
 - + Premium door sill plates
 - + 17" Eco-spoke aluminum alloy wheels

PREMIUM PACKAGE

- Limited Standard Equipment plus:
- + Panoramic tilt-and-slide sunroof
 - + Gloss black door surround and outside mirror accents
 - + 7" touchscreen navigation system with voice commands
 - + 400-Watt Infinity® premium audio system with 8 speakers and rear subwoofer

SPECIFICATIONS

- Length : 189.8 in
- Wheelbase : 110.0 in
- Width (excludes mirrors) : 72.2 in
- Height : 57.7 in
- Interior Volume : 115.9 cu ft
- Passenger Volume : 103.8 cu ft
- Cargo Volume : 12.1 cu ft
- Coefficient of Drag (Cd) : 0.25
- Curb Weight : 3,508 – 3,633 lbs

EPA MILEAGE ESTIMATES

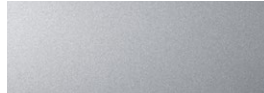
- Standard : 36 MPG City / 40 MPG Highway / 38 MPG Combined
- Limited : 36 MPG City / 40 MPG Highway / 37 MPG Combined
- Fuel Tank : 17.2 gallons
- EPA Classification : Midsize Car

EXTERIOR COLORS

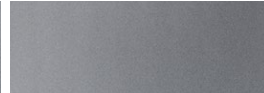
DIAMOND WHITE PEARL



STARLIGHT SILVER



PEWTER GRAY METALLIC



BLUE SKY METALLIC



VENETIAN RED PEARL



ECLIPSE BLACK



INTERIOR COLORS

CAMEL LEATHER



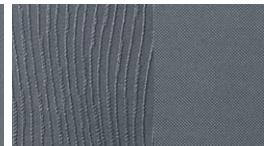
CAMEL CLOTH



GRAY LEATHER



GRAY CLOTH



WHEELS

17" ALLOY WHEELS



16" ALLOY WHEELS

AMERICA'S BEST WARRANTY

POWERTRAIN LIMITED WARRANTY

10 YEARS 100,000 MILES

NEW VEHICLE LIMITED WARRANTY

5 YEARS 60,000 MILES

ANTI-PERFORATION WARRANTY

7 YEARS UNLIMITED MILES

24/7 ROADSIDE ASSISTANCE

5 YEARS UNLIMITED MILES



Assurance

HYUNDAIASSURANCE.COM

Wherever the road takes you, we've got your back with Hyundai Assurance, an umbrella of services and benefits that includes America's Best Warranty, 24/7 Roadside Assistance, innovative safety and car care features...and more.

VISIT HYUNDAI.COM OR OUR SOCIAL MEDIA SITES



See dealer for LIMITED WARRANTY details. Fuel economy estimated by EPA for comparison only. Mileage may vary. While the information contained in this brochure was correct at the time of printing, specifications and equipment can change. Feature comparisons based on competitor information available at the time of printing. No warranty or guarantee is being extended in this brochure, and Hyundai reserves the right to change product specifications and equipment at any time without incurring obligations. Some vehicles are shown with optional equipment. Specifications apply to U.S. vehicles only. Please contact your Hyundai dealer for current vehicle specifications. As part of Hyundai's commitment to a responsible environment, this brochure is printed using paper certified by the Forest Stewardship Council.® FSC® certification helps ensure that the highest social and environmental standards are met in the making of the paper we use, contributing to conservation, responsible management, and community-level benefits for people near the forests.

