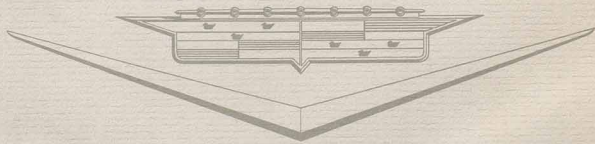


1959

Cadillac





1959 *Cadillac*



By appointment to the world's most discriminating motorists . . .

CADILLAC

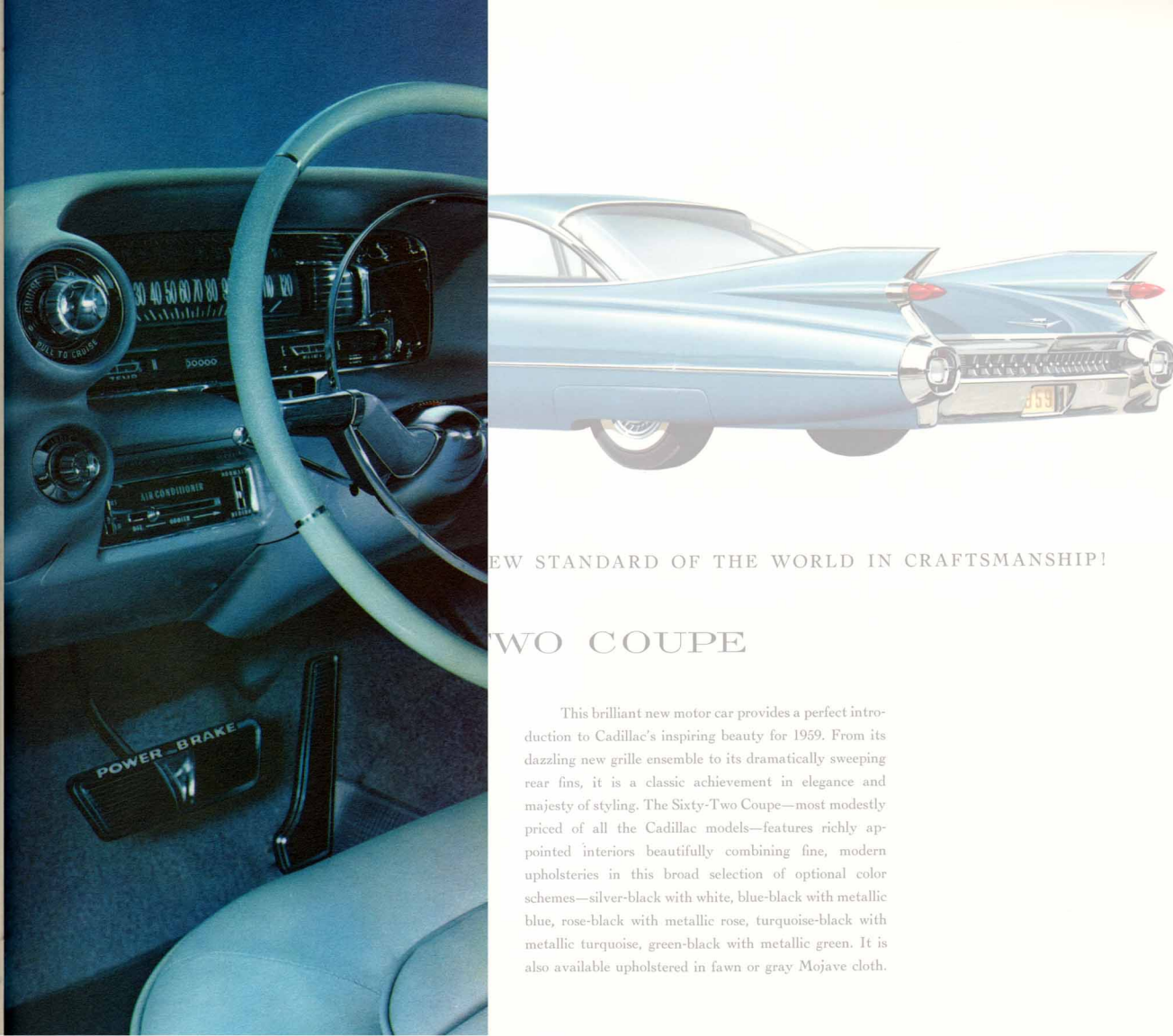
for 1959 presents a new realm of

MOTORING MAJESTY



The appearance of a new Cadillac car is always awaited with eager anticipation by the world's motorists. For a new Cadillac traditionally embodies motordom's full measure of progress in styling and in engineering. But never before has the news been as wonderful—or as exciting—as it is in this Cadillac year of 1959. For with this great motor car, Cadillac introduces an entirely new dimension of automotive goodness—new in the way it looks, new in the way it rides and drives and new in the satisfaction it

will render its owner. In quality and craftsmanship, it is a proud and logical successor to the illustrious Cadillac creations of the past. And yet, it advances—in the fullest imaginable measure—all of the virtues that make a Cadillac the Standard of the World. These advancements are portrayed on the following pages in each of Cadillac's beautiful new models. As you study these Cadillac cars for 1959, we know you will agree that, taken together, they represent an entirely new realm of motoring majesty.



NEW STANDARD OF THE WORLD IN CRAFTSMANSHIP!

SIXTY-TWO COUPE

This brilliant new motor car provides a perfect introduction to Cadillac's inspiring beauty for 1959. From its dazzling new grille ensemble to its dramatically sweeping rear fins, it is a classic achievement in elegance and majesty of styling. The Sixty-Two Coupe—most modestly priced of all the Cadillac models—features richly appointed interiors beautifully combining fine, modern upholsteries in this broad selection of optional color schemes—silver-black with white, blue-black with metallic blue, rose-black with metallic rose, turquoise-black with metallic turquoise, green-black with metallic green. It is also available upholstered in fawn or gray Mojave cloth.

By appointment to the world's most distinguished

CADILLAC

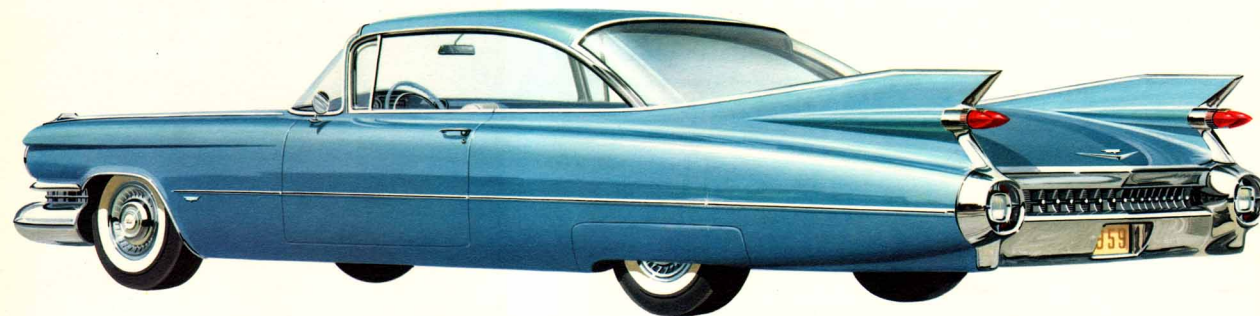
for 1959 presents a new

MOTORING MODEL



The appearance of a new Cadillac car is always awaited with eager anticipation by the world's motorists. For a new Cadillac traditionally embodies motordom's full measure of progress in styling and in engineering. But never before has the news been as wonderful—or as exciting—as it is in this Cadillac year of 1959. For with this great motor car, Cadillac introduces an entirely new dimension of automotive goodness—new in the way it looks, new in the way it rides and drives and new in the satisfaction it

will render its owner. It is a proud and distinguished Cadillac creation in the fullest measure of artistry that make a Cadillac. These advanced features are detailed on pages in each of our brochures. As you study them, you will know you will represent an entire



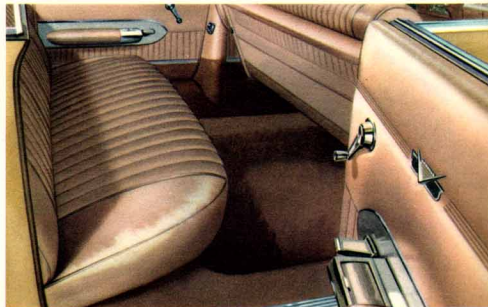
THE NEW STANDARD OF THE WORLD IN CRAFTSMANSHIP!

SIXTY-TWO COUPE



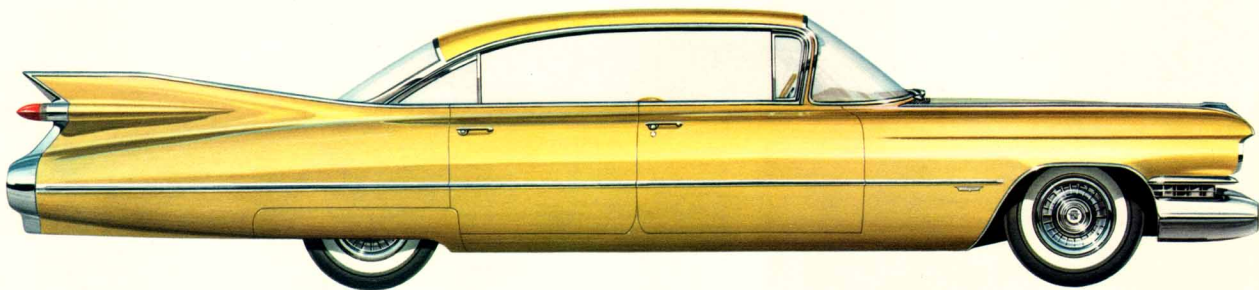
This brilliant new motor car provides a perfect introduction to Cadillac's inspiring beauty for 1959. From its dazzling new grille ensemble to its dramatically sweeping rear fins, it is a classic achievement in elegance and majesty of styling. The Sixty-Two Coupe—most modestly priced of all the Cadillac models—features richly appointed interiors beautifully combining fine, modern upholsteries in this broad selection of optional color schemes—silver-black with white, blue-black with metallic blue, rose-black with metallic rose, turquoise-black with metallic turquoise, green-black with metallic green. It is also available upholstered in fawn or gray Mojave cloth.

Here in the full breadth of its bold, sweeping lines you can see how skilled artisans—working with steel and glass—have created a modern masterpiece of automotive sculpture. And never has the Sixty-Two Sedan been more lavishly appointed or more rewarding to own. Every new luxury and convenience appointment is in constant attendance to both driver and passengers—while Cadillac's new interior roominess provides perfect comfort through even the longest journey.



THE NEW STANDARD OF THE WORLD IN EXCELLENCE!

SIXTY-TWO SEDAN (Six Window)



Brilliantly new in beauty and bearing, the styling of the Sixty-Two Sedan features an entirely new concept in sedan design. The driver is surrounded by safety plate glass—providing greater motoring pleasure and safety than he has ever known. A single rear window curves completely around the rear quarter panels of the car—and the sweeping roof line extends rearward beyond the window to form a protective visor. To take command of this newest Sixty-Two Sedan is to experience a new measure of motoring satisfaction—and to learn the facts about its great practicality is to understand a new concept of motoring value. Interior fabrics are identical with those of the Sixty-Two Coupe.

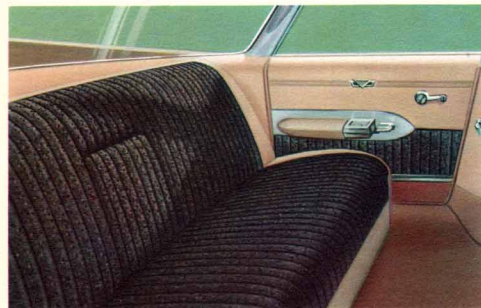
THE NEW STANDARD OF THE WORLD IN VALUE!

SIXTY-TWO SEDAN (Four Window)



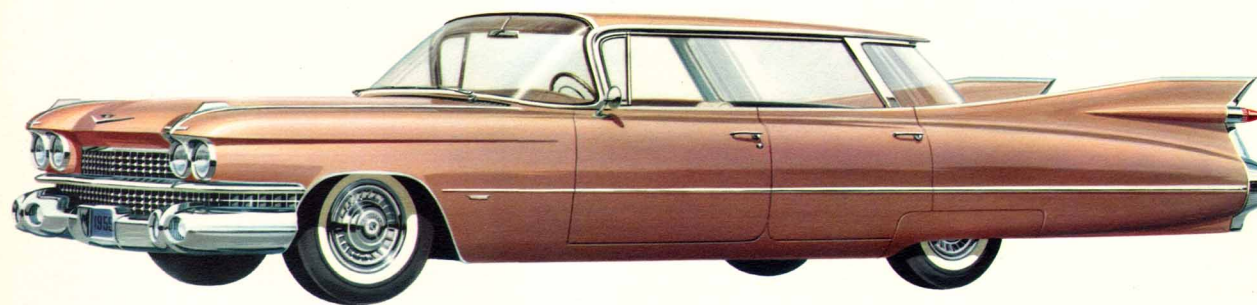
Here in the full breadth of its bold, sweeping lines you can see how skilled artisans—working with steel and glass—have created a modern masterpiece of automotive sculpture. And never has the Sixty-Two Sedan been more lavishly appointed or more rewarding to own. Every new luxury and convenience appointment is in constant attendance to both driver and passengers—while Cadillac's new interior roominess provides perfect comfort through even the longest journey.

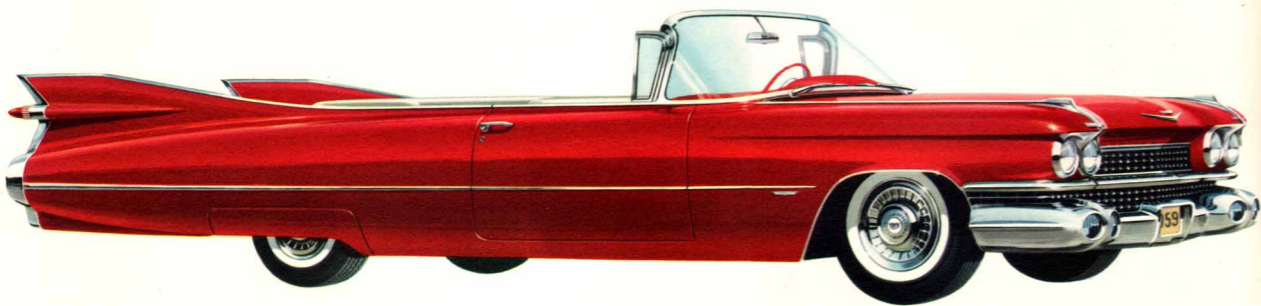
THE NEW STANDARD OF
SIXTY-TWO SEDAN



Brilliantly new in beauty and bearing, the styling of the Sixty-Two Sedan features an entirely new concept in sedan design. The driver is surrounded by safety plate glass—providing greater motoring pleasure and safety than he has ever known. A single rear window curves completely around the rear quarter panels of the car—and the sweeping roof line extends rearward beyond the window to form a protective visor. To take command of this newest Sixty-Two Sedan is to experience a new measure of motoring satisfaction—and to learn the facts about its great practicality is to understand a new concept of motoring value. Interior fabrics are identical with those of the Sixty-Two Coupe.

THE NEW STANDARD OF THE WORLD IN VALUE!
SIXTY-TWO SEDAN (Four Window)

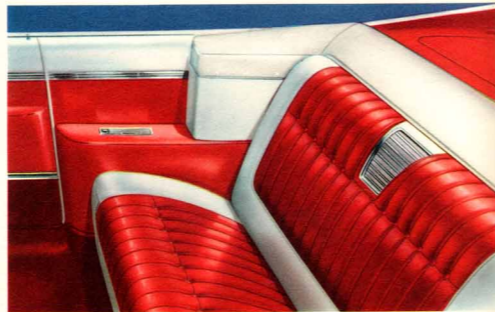




THE NEW STANDARD OF THE WORLD IN SUPREMACY!

SIXTY-TWO CONVERTIBLE

Cadillac's magnificently new design and craftsmanship are dramatically displayed in the Sixty-Two Convertible. Behind a new windshield of epic proportions, the driver surveys the world about him over a remarkable, low, broad expanse of hood and fenders . . . flowing together in one smooth, rhythmic line. While inside he is surrounded by finely grained leathers either in black and white . . . red and white . . . turquoise metallic . . . blue metallic . . . green metallic . . . saddle tan . . . red or black.



THE NEW STANDARD OF THE WORLD IN ELEGANCE!

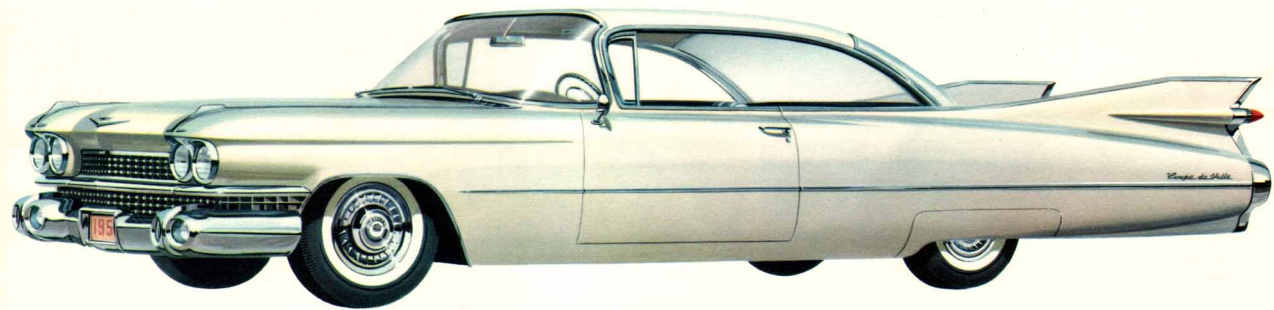
COUPE DE VILLE

The completely new profile and interior elegance of the Coupe de Ville assure its continued affection in the hearts of the world's motorists. Inspect it from any viewpoint, and you will discover a rare discernment and imagination by its designers . . . craftsmanship and quality by its builders. Magnificent interior fabrics include Camden cloth in hues of gray, blue and fawn with matching leathers . . . silver-black Coronado with white leather . . . green Coronado with green metallic leather . . . turquoise-black Coronado with turquoise metallic leather . . . and rose Coronado with rose metallic leather.

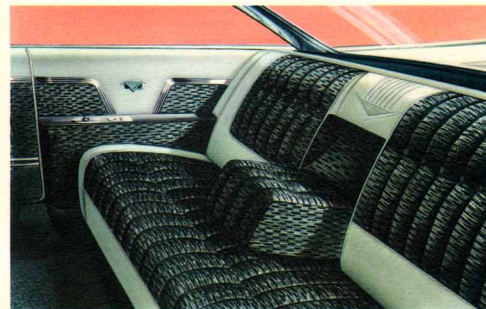


S THE NEW STANDARD IXTY-TWO CO

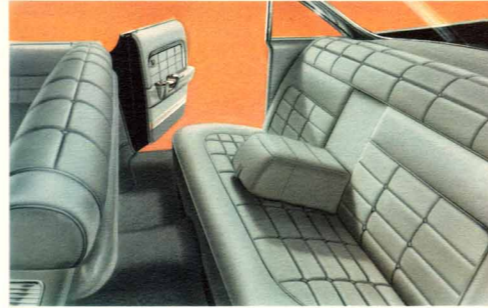
Cadillac's magnificently new design and craftsmanship are dramatically displayed in the Sixty-Two Convertible. Behind a new windshield of epic proportions, the driver surveys the world about him over a remarkable, low, broad expanse of hood and fenders . . . flowing together in one smooth, rhythmic line. While inside he is surrounded by finely grained leathers either in black and white . . . red and white . . . turquoise metallic . . . blue metallic . . . green metallic . . . saddle tan . . . red or black,



C THE NEW STANDARD OF THE WORLD IN ELEGANCE! OUPE DE VILLE



The completely new profile and interior elegance of the Coupe de Ville assure its continued affection in the hearts of the world's motorists. Inspect it from any viewpoint, and you will discover a rare discernment and imagination by its designers . . . craftsmanship and quality by its builders. Magnificent interior fabrics include Camden cloth in hues of gray, blue and fawn with matching leathers . . . silver-black Coronado with white leather . . . green Coronado with green metallic leather . . . turquoise-black Coronado with turquoise metallic leather . . . and rose Coronado with rose metallic leather.

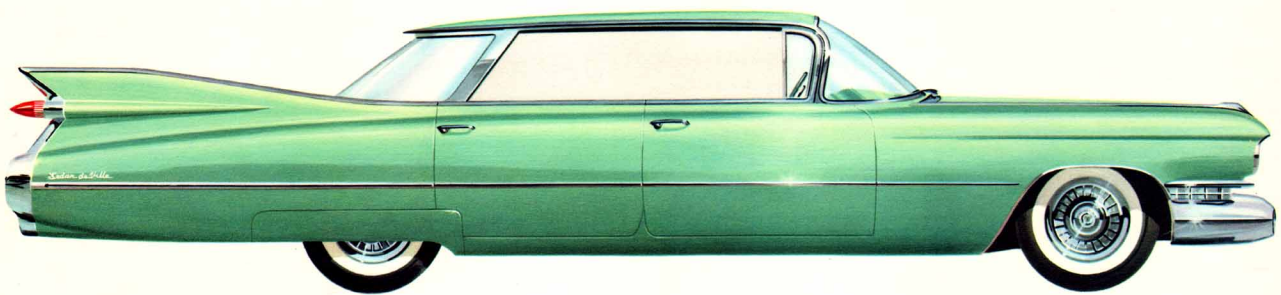


Seldom has a manufactured product been bestowed with such world acclaim as has this great motor car. And this year will surely add still greater lustre to its noble reputation. Its subtle accents of finely drawn chrome . . . its substantial, yet ethereal beauty of silhouette . . . its elegant simplicity of design . . . make it a classic among motor cars—a perfect blend of the contemporary and the traditional. Its wide selection of fabrics and leathers include blue Colony cloth with matching leather . . . blue, fawn, green and gray Clarion and Concord cloth combinations . . . as well as black Colony cloth with white leather . . . solid gray Concord or wool broadcloth . . . and solid blue or fawn Concord cloth.

THE NEW STANDARD OF THE WORLD IN LEADERSHIP!

FLEETWOOD SIXTY SPECIAL SEDAN

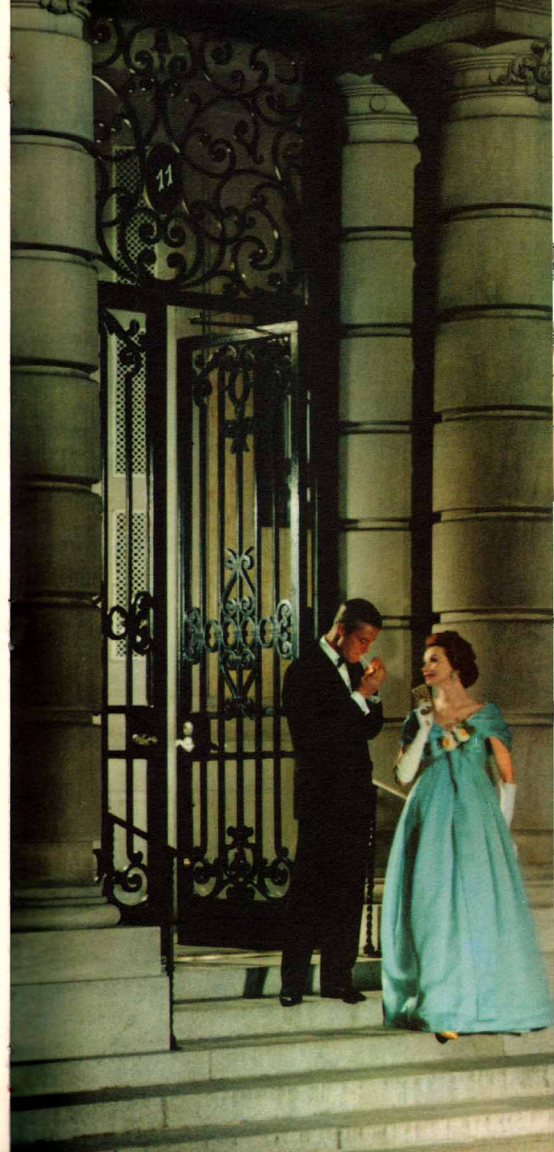




THE NEW STANDARD OF THE WORLD IN LUXURY!

S EDAN DE VILLE (Four Window)

The Sedan de Ville for 1959 is, as always, a celebrity even among Cadillacs. This year—with an entirely new roof line—its aristocratic flair is especially dramatic and pronounced. Rear fender panels wing gracefully backward and upward, while the deck lid slopes gradually to the rear bumper. Like all 1959 Cadillacs its new acrylic finishes maintain their lustrous tones longer and require only minimum care. The gorgeous interiors are—as always—dramatic and inspiring to behold. The Sedan de Ville offers the same interior selections as the beautiful Coupe de Ville.



THE NEW STANDARD OF THE WORLD IN DISTINCTION!

DE VILLE (Six Window)

Splendor is the constant companion of the owner of this supremely gracious version of the Sedan de Ville. Its advanced features of engineering and construction provide the most satisfying performance and superb comfort ever achieved in Cadillac's fifty-seven years of fine car leadership. And here, too, are all the elegant luxuries that have won for the Cadillac de Ville models the admiration of motorists everywhere. Interior selections are, of course, the same in all three distinguished de Ville creations.



THE NEW STANDARD
SEDAN DE VILLE

The Sedan de Ville for 1959 is, as always, a celebrity even among Cadillacs. This year—with an entirely new roof line—its aristocratic flair is especially dramatic and pronounced. Rear fender panels wing gracefully backward and upward, while the deck lid slopes gradually to the rear bumper. Like all 1959 Cadillacs its new acrylic finishes maintain their lustrous tones longer and require only minimum care. The gorgeous interiors are—as always—dramatic and inspiring to behold. The Sedan de Ville offers the same interior selections as the beautiful Coupe de Ville.



THE NEW STANDARD OF THE WORLD IN DISTINCTION!
SEDAN DE VILLE (Six Window)



Splendor is the constant companion of the owner of this supremely gracious version of the Sedan de Ville. Its advanced features of engineering and construction provide the most satisfying performance and superb comfort ever achieved in Cadillac's fifty-seven years of fine car leadership. And here, too, are all the elegant luxuries that have won for the Cadillac de Ville models the admiration of motorists everywhere. Interior selections are, of course, the same in all three distinguished de Ville creations.

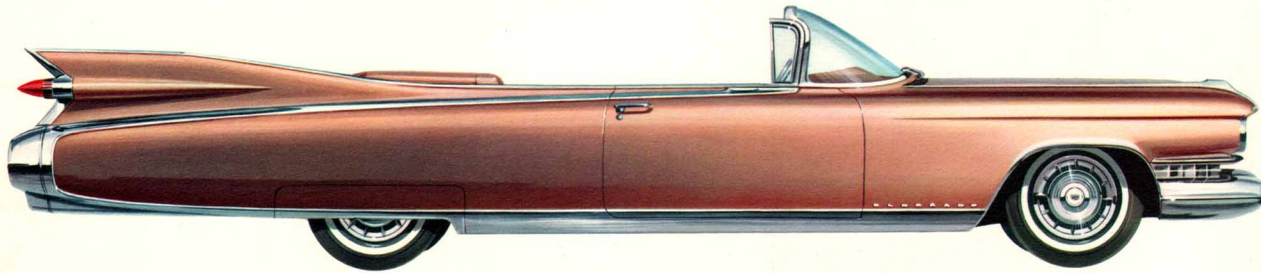
Only from the great traditions of Cadillac could there come a motor car as surpassingly fine as that portrayed below—the 1959 Eldorado Biarritz. Luxurious beyond description, it offers spectacular performance and handling ease. Every known motoring advancement makes each journey memorable. Standard equipment includes a custom engineered 345-horsepower engine, air suspension, electrically powered front seat adjustment, electric door locks and window regulators, power steering and braking, radio and heater. Interiors are offered in deep-grained Cardiff and Florentine leathers in tones of bronze metallic . . . blue metallic . . . gray metallic . . . slate green metallic . . . black . . . white . . . and red.



THE NEW STANDARD OF THE WORLD IN SPLENDOR!

E

LDORADO BIARRITZ

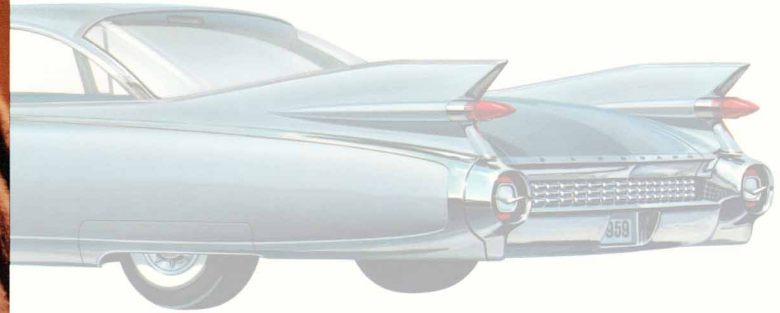


Here in the Eldorado Seville for 1959 is a veritable wonder-world of luxury—with rare beauty and harmony of color . . . flawless Fleetwood coachcrafting . . . perfect convenience of appointments. Here, too, are new beauty and elegance of design . . . new smoothness of ride . . . new horizons of motoring pride and pleasure. As a companion to the Eldorado Biarritz, interior selections include fine fabrics as well as leathers. The exterior roof surface is covered in a weather resistant fabric. To complement its exterior and interior magnificence, the Eldorado Seville provides, as standard equipment, the same special aids to comfort and driving pleasure as the Eldorado Biarritz.

THE NEW STANDARD OF THE WORLD IN MAGNIFICENCE!

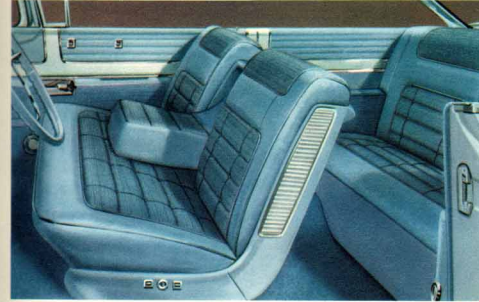
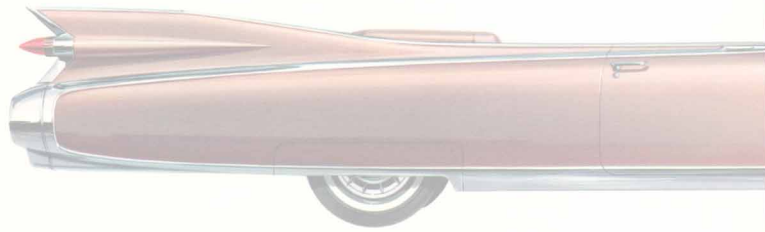
E

LDORADO SEVILLE



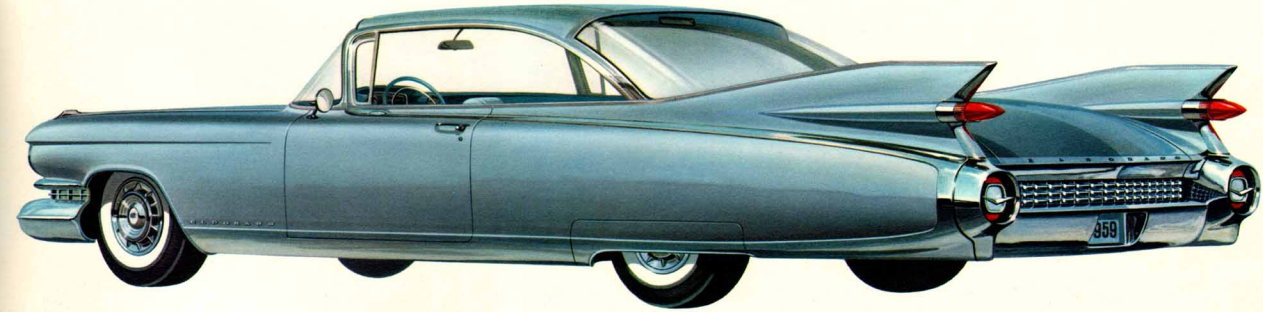
Only from the great traditions of Cadillac could there come a motor car as surpassingly fine as that portrayed below—the 1959 Eldorado Biarritz. Luxurious beyond description, it offers spectacular performance and handling ease. Every known motoring advancement makes each journey memorable. Standard equipment includes a custom engineered 345-horsepower engine, air suspension, electrically powered front seat adjustment, electric door locks and window regulators, power steering and braking, radio and heater. Interiors are offered in deep-grained Cardiff and Florentine leathers in tones of bronze metallic . . . blue metallic . . . gray metallic . . . slate green metallic . . . black . . . white . . . and red.

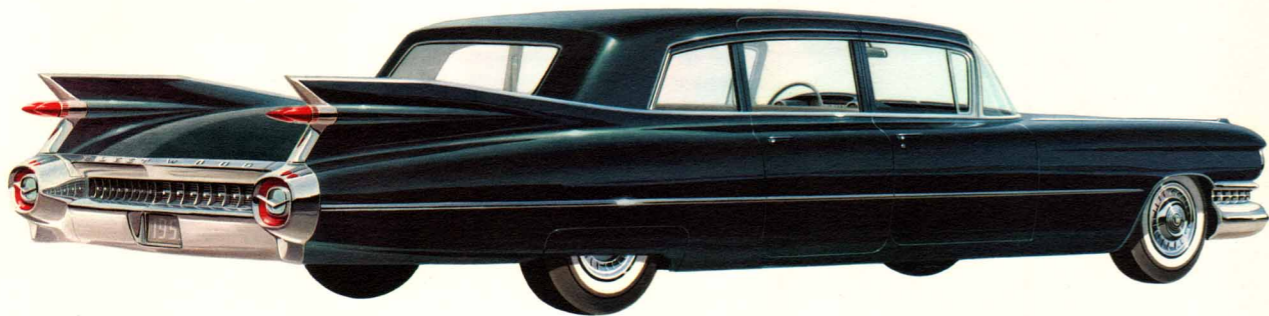
THE NEW STANDARD OF
ELDORADO BIA



Here in the Eldorado Seville for 1959 is a veritable wonder-world of luxury—with rare beauty and harmony of color . . . flawless Fleetwood coachcrafting . . . perfect convenience of appointments. Here, too, are new beauty and elegance of design . . . new smoothness of ride . . . new horizons of motoring pride and pleasure. As a companion to the Eldorado Biarritz, interior selections include fine fabrics as well as leathers. The exterior roof surface is covered in a weather resistant fabric. To complement its exterior and interior magnificence, the Eldorado Seville provides, as standard equipment, the same special aids to comfort and driving pleasure as the Eldorado Biarritz.

THE NEW STANDARD OF THE WORLD IN MAGNIFICENCE!
ELDORADO SEVILLE





THE NEW STANDARD OF THE WORLD IN ACHIEVEMENT!

FLEETWOOD SEVENTY-FIVE SEDAN & LIMOUSINE

Never has the Cadillac crest adorned more impressive or distinctive motor cars than the Fleetwood Seventy-Five models for 1959. Dignity and bearing are evident in every detail—from massive grille to distinctive roof and rear deck design. Never before has a motor car of this stature been so dramatically styled . . . so exciting to behold . . . so easy to drive and to handle . . . so practical to own and to operate. Passenger compartments are impeccably tailored in gray or fawn wool broadcloth or in gray or fawn wool broadcloth and Bedford cord. The glass partitioned chauffeur's compartment in the Limousine may be crafted in gray or fawn leather to match the rear compartment . . . or black leather may be selected.



NEW STANDARD OF THE WORLD IN MAJESTY!

ELDORADO BROUGHAM

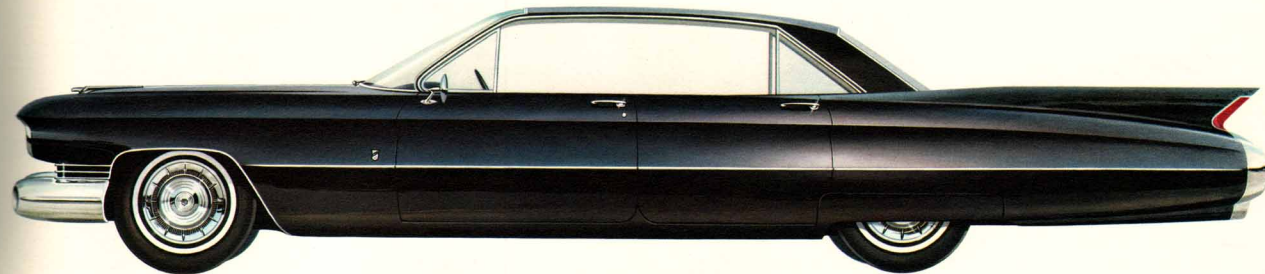
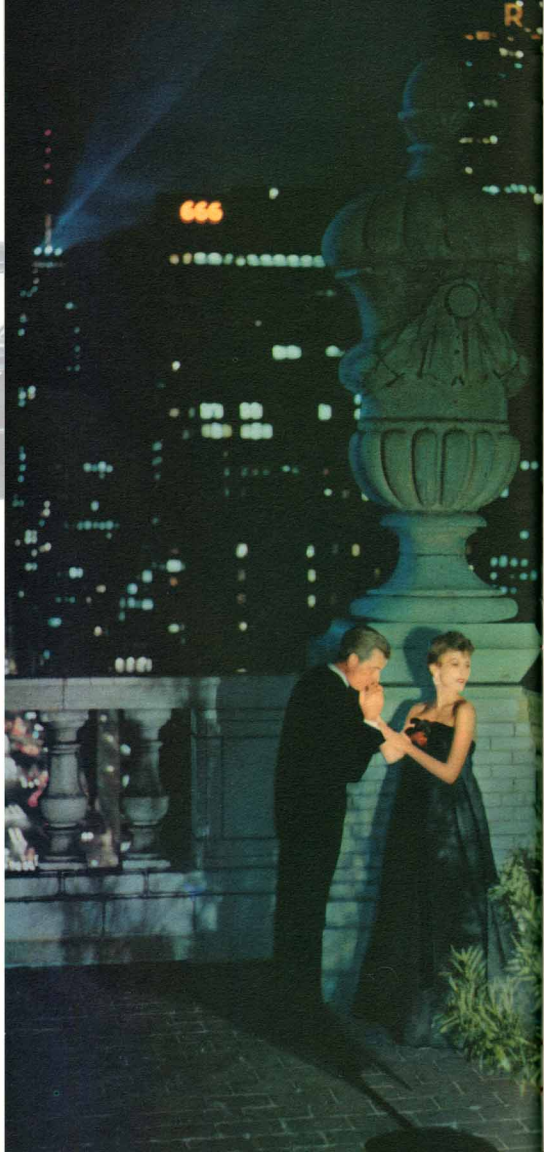
The Eldorado Brougham is unique among motor cars. Custom-designed and custom-built, it is dramatically and classically beautiful. Every advanced feature of comfort . . . convenience . . . luxury . . . and performance known to automotive science is utilized to make the Cadillac Eldorado Brougham the source of utmost pride and pleasure. Cadillac Air Conditioning, Cruise Control and Automatic Headlamp Control are included as standard equipment among its many special features. Interiors are styled and fashioned in a great variety of elegant selections of the world's choicest leathers and fabrics. Consult with your authorized Cadillac dealer for details on this limited production motor car.





THE NEW STANDARD OF THE WORLD IN
FLEETWOOD SEVENTY-FIVE

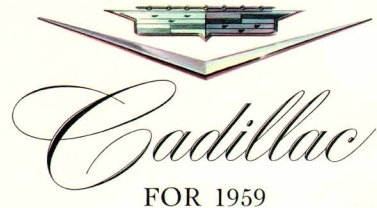
Never has the Cadillac crest adorned more impressive or distinctive motor cars than the Fleetwood Seventy-Five models for 1959. Dignity and bearing are evident in every detail—from massive grille to distinctive roof and rear deck design. Never before has a motor car of this stature been so dramatically styled . . . so exciting to behold . . . so easy to drive and to handle . . . so practical to own and to operate. Passenger compartments are impeccably tailored in gray or fawn wool broadcloth or in gray or fawn wool broadcloth and Bedford cord. The glass partitioned chauffeur's compartment in the Limousine may be crafted in gray or fawn leather to match the rear compartment . . . or black leather may be selected.



THE NEW STANDARD OF THE WORLD IN MAJESTY!
ELDORADO BROUGHAM



The Eldorado Brougham is unique among motor cars. Custom-designed and custom-built, it is dramatically and classically beautiful. Every advanced feature of comfort . . . convenience . . . luxury . . . and performance known to automotive science is utilized to make the Cadillac Eldorado Brougham the source of utmost pride and pleasure. Cadillac Air Conditioning, Cruise Control and Automatic Headlamp Control are included as standard equipment among its many special features. Interiors are styled and fashioned in a great variety of elegant selections of the world's choicest leathers and fabrics. Consult with your authorized Cadillac dealer for details on this limited production motor car.

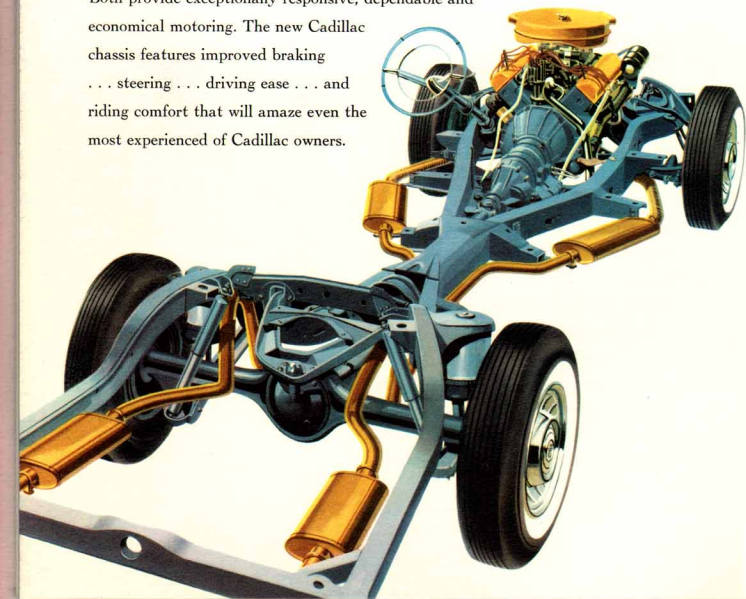


THE NEW STANDARD OF THE WORLD IN PERFORMANCE!

ENGINE AND CHASSIS

Two great new high-performance Cadillac engines have been designed and engineered for the 1959 models . . . a four-barrel carburetor design and a three dual-barrel carburetor engine which is standard for all Eldorado models.

Both provide exceptionally responsive, dependable and economical motoring. The new Cadillac chassis features improved braking . . . steering . . . driving ease . . . and riding comfort that will amaze even the most experienced of Cadillac owners.



STANDARD POWER EQUIPMENT ON ALL MODELS

CADILLAC POWER STEERING makes parking . . . maneuvering in traffic . . . and highway travel an easy and effortless pleasure.

CADILLAC POWER BRAKES enable the driver to bring the car to a quick, safe stop with gentle pressure from either foot.

CADILLAC HYDRA-MATIC DRIVE provides eager, smooth response as it automatically shifts gears for the driver.

ACCESSORIES FOR YOUR COMFORT, SAFETY AND CONVENIENCE!

CADILLAC AIR SUSPENSION provides riding quality that is unobtainable with conventional springs. Pioneered by Cadillac, this newest and most outstanding advancement in passenger car riding comfort also levels the car to normal height under a minimum or maximum complement of passengers and luggage.*

CADILLAC CRUISE CONTROL permits the driver to maintain a constant speed of travel automatically. It promotes highway safety by reducing fatigue and is also an aid to increased fuel economy.**

POWER WINDOWS AND SEATS (available on all models) are convenience items you will certainly want to have on your favorite Cadillac. They are standard at no extra cost on many body styles.

THE CADILLAC "AUTRONIC-EYE" automatic headlamp control dims your headlights as other cars approach or when you enter a brightly lighted area. This automatic headlamp beam control is an additional aid to safe, nighttime motoring.**

ELECTRIC DOOR LOCKS permit the driver and front seat passenger to lock and unlock all doors automatically at the touch of a switch.*

SPECIFICATIONS

ENGINE: Eight-cylinder, overhead, 90° V-type; bore 4.0"; stroke 3.875"; displacement 390 cu. in. Engine mounted in rubber at three points. Compression ratio 10.5 to 1. Three, dual-barrel carburetor engine on Eldorado Biarritz, Seville and Brougham, available at extra cost on other models.

PISTONS: Aluminum alloy, slipper type to reduce friction surfaces and permit nesting between crankshaft counterweights. Two compression rings, one oil ring with expander; top compression ring chrome-plated to minimize wear on cylinder walls. Recessed contour in piston head increases turbulence and thus assures fast, complete burning of fuel-air mixture.

CARBURETOR: Four-barrel downdraft with equalized manifold; mechanical fuel pump; dry-pack type air cleaner; intake silencer; automatic choke. Three dual-barrel carburetors provided on the Eldorado engine.

LUBRICATION: Full-pressure. Oil filter standard.

ELECTRICAL SYSTEM: 12-volt.

GASOLINE TANK CAPACITY: 21 gallons.

HYDRA-MATIC DRIVE: Fully automatic, step-gear type. Controlled fluid coupling on forward gear set for smoother shifts. Provides two Drive Ranges, Lo Range and Reverse.

REAR AXLE: Hypoid. Differential housing offset to provide straight-line drive. Ratio is 2.94 with an optional 3.21 axle. A 3.21 axle is provided on air-conditioned models. A 3.21 axle is also standard with the 345 h.p. engine with a 2.94 axle optional. On Series 75 models, ratio is 3.36 with 3.77 optional.

FRONT SUSPENSION: Spherical joint with Cadillac independent, helical-coil type springs.

CADILLAC AIR CONDITIONING lets you ride always in the cool comfort you enjoy in your air-conditioned office or home. Special features dehumidify the air and remove dust, pollen and smoke.**

E-Z-EYE GLASS reduces eyestrain by eliminating annoying glare. It filters out radiant heat, helping to keep the car interior cool.**

THE CADILLAC RADIO produces rich, full tones and long-range reception unique in a motor car radio. Tuning is automatic at a finger touch. The two-speaker system is supplied at no extra cost. Antenna is electrically operated.*

CADILLAC HEATING SYSTEM is unusually efficient and simple to operate. It provides warm air to both front and rear compartments, as well as heated air to the windshield for superb defrosting.*

CADILLAC FOG LAMPS provide illumination close to the surface of the road. They contribute greatly to safer driving in adverse weather.*

*Standard on the Eldorado Seville, Biarritz and Brougham.

**Standard on the Eldorado Brougham.

REAR SUSPENSION: Four-link drive. Rear springs are helical-coil type.

AIR SUSPENSION* (optional at extra cost): Individual air springs at each wheel automatically adjust to maintain car height for best quality ride, uniform steering response and best appearance. Manual height control provided.

BRAKES: Cadillac Power Brakes. Effective brake lining area, 210.32 sq. in., 233.72 sq. in. on Series 75 models.

STEERING: Cadillac Power Steering standard equipment with new over-all steering ratio of 18.9 to 1.

FRAME: Cadillac tubular-center X frame permits lower body for improved appearance and greater stability.

TIRES: Low-pressure, 4-ply, tubeless. Size—8.00 x 15 (Series 75, 6-ply size—8.20 x 15). White sidewall tires*, size 8.20 x 15, optional at extra cost.

DIRECTIONAL SIGNALS: Standard equipment.

BACK-UP LIGHTS: Standard equipment.

TREAD: Front and rear, 61".

WHEELBASE: 130" except Series 75, 149.75".

OVER-ALL LENGTH: 225" except Series 75, 244.8".

*Standard on Eldorado models.

Consult your Cadillac Dealer for specifications of the Eldorado Brougham.

CADILLAC MOTOR CAR DIVISION • GENERAL MOTORS CORPORATION

Cadillac Motor Car Division of General Motors Corporation reserves the right to make changes at any time, without notice, in prices, colors, materials, equipment, specifications and models, and also to discontinue models.

LT80 IN U.S.A.

