

DATSUN 1982



PRODUCT OF NISSAN

1982 Datsun 210. Proof that big things come in small packages.



210 SL Coupe



210 SL Wagon



210 Deluxe 4-Door Sedan



210 Deluxe 2-Door Sedan (front) and 210 Standard

The 210 was built to travel a long way down a lot of road. It hoards fuel like a small car, but provides the kind of comforts you'd expect in a big one.* Take a close look. The seams line up properly. The body panels all fit the way they're supposed to. Fit and finish of every piece, inside and out, is sure and solid. It's quite a piece of work! The 210 saves you money when you buy it, and every mile you operate it. And it's built with care, with precision and with pride... the only way Nissan knows how.

SPECIAL 210 HIGHLIGHTS

- 1.5-liter 4-cyl. OHV engine (Deluxe and SL)
- Power-assisted front disc brakes
- Keyless door locking
- Sun roof option on SL models
- Transistorized ignition system
- 5-speed overdrive manual all-synchromesh transmission (standard on all Deluxe and SL models)
- Optional 3-speed automatic transmission with lock-up torque converter (Deluxe and SL models)
- Lowback front bucket seats with adjustable head restraints (Deluxe and SL Models)
- Flash-to-pass headlight switch
- Center console with storage (SL models)
- Bi-level heater-defroster
- Side-window defoggers
- Electric rear-window defroster
- Maintenance-free battery (Deluxe and SL models).

Some items shown are optional. See the 1982 Datsun 210 brochure for more complete information.

*1982 EPA ESTIMATED 210 MPG

	49 States HWY/MPG	California HWY/MPG
Standard: 4-speed	38/(30)	35/(27)
MPG: 5-speed (Not available in California)	51/(36)	N.A.
Coupes and Deluxe Sedans: 5-speed	44/(32)	44/(30)
Coupes and Deluxe Sedans: Automatic	39/(31)	35/(28)
Wagon: 5-speed	43/(31)	42/(29)
Wagon: Automatic	38/(30)	35/(27)

Remember: Use estimated MPG for comparison. Your mileage may differ, depending on speed, weather and trip length. Your actual highway mileage will probably be less than the EPA estimated highway fuel economy.

DIMENSIONS AND WEIGHTS

	2-Door Sedan	4-Door Sedan	Coupe	Wagon
Wheelbase (in.)	92.1	92.1	92.1	92.1
Length (in.)	165.0	165.0	165.0	167.7
Width (in.)	62.2	62.2	62.2	62.2
Height (in.)	53.7	53.7	52.5	52.5
Turning Diameter** (ft.)	32.8	32.8	32.8	32.8
Curb Weight † (lbs.)	1943 ‡	1987	2011	2081
Fuel Capacity (gal.)	13.2	13.2	13.2	13.2

**Wall to wall. †Vehicles with optional equipment or California emissions equipment will be slightly heavier. ‡Standard Model: 1901. MPG model: 1932.

1982 Datsun 310. Sleek, smooth, silent, spirited, super!



310 GX Coupe



310 GX 4-Door Sedan



310 GX 2-Door Sedan



310 Deluxe 2-Door Sedan

The 310 makes pleasure driving a pleasure again. Makes any kind of driving a pleasure again. For openers, there's an ingenious new 1.5-liter overhead-cam lightweight engine that delivers more power on less fuel than last year's engine.* And runs whisper-silent in the bargain. Plus a new 5-speed overdrive manual in GX models. Combine them with the 310's front-wheel drive, rack-and-pinion steering and zero scrub-radius steering geometry and you have a real driver's machine. If you don't care about things technical, just look at those beautiful lines. And it's all put together with traditional Nissan quality.

SPECIAL 310 HIGHLIGHTS

- New 1.5-liter 4-cyl. OHC engine with 2-barrel carburetor and 2-stage automatic choke
- 5-speed overdrive manual trans-axle (GX models; 4-speed overdrive manual standard on Deluxe)
- Sun roof optional on 2-Door GX models
- Quartz clock
- Fully reclining bucket seats (cloth on GX, vinyl on Deluxe)
- Split fold-down rear seat backs (GX models)
- Flow-through ventilation with bi-level heater/defroster
- Optional Comfort Group, including air conditioning and power steering (GX models)
- Electric rear-window defroster
- Side-window defoggers
- Center console (GX models)
- Detachable rear cargo cover (GX models)
- Maintenance-free battery.

Some items shown are optional. See the 1982 Datsun 310 brochure for more complete information.

	*1982 EPA ESTIMATED 310 MPG	
	49 States HWY/MPG	California HWY/MPG
Deluxe 2-Door Sedan: 4-speed	45/(34)	45/(32)
GX Sedans and GX Coupe: 5-speed	47/(33)	45/(31)
GX Sedans and GX Coupe: Automatic**	-	-

Remember: Use estimated MPG for comparison. Your mileage may differ, depending on speed, weather and trip length. Your actual highway mileage will probably be less than the EPA estimated highway fuel economy.

DIMENSIONS AND WEIGHTS

	2-Door Sedan	4-Door Sedan	GX Coupe
Wheelbase (in.)	94.3	94.3	94.3
Length (in.)	160.6	160.6	160.6
Width (in.)	63.8	63.8	63.8
Height (in.)	53.5	53.5	52.0
Turning Diameter† (ft.)	31.5	31.5	31.5
Curb Weight‡ (lbs.)	1936	1958	1947
Fuel Capacity (gal.)	13.2	13.2	13.2

**Available in early 1982. EPA estimates not available at time of printing. †Curb to curb. ‡Vehicles with optional equipment will be slightly heavier. Deluxe 2-door: 1892.

1982 Nissan Stanza. Shaped by the wind, built for tomorrow.



Nissan Stanza 4-Door Sedan XE



Nissan Stanza 2-Door Sedan XE



Nissan Stanza 2-Door and 4-Door Deluxe Sedans



Nissan Stanza XE Interior

Some day a car like the Nissan Stanza may be the rule. Today, it is the exception. The Nissan Stanza marks the first time anyone has brought together the benefits of front-wheel drive, the latest in aerodynamic theory and the remarkable Nissan Anti Pollution System (NAPS) engine. Your first impression of the Nissan Stanza is the breathtaking beauty of its wind-tunnel-shaped body styling. Your first question about its interior is how so much room could be put inside that magnificent body. The more time you spend with the Nissan Stanza, the more you will be impressed with its looks, its performance and its quality.

SPECIAL NISSAN STANZA HIGHLIGHTS

- 2.0-liter 4-cyl. OHC NAPS-X engine
- Independent rear suspension • Front-wheel drive • Power-assisted, ventilated front disc brakes • 4-way adjustable driver's seat (XE models) • 5-speed overdrive manual transaxle • Rack-and-pinion steering (power-assisted on XE models) • Tilt-adjust steering column (XE models) • Keyless locking • Rectangular halogen headlights • Reclining lowback front bucket seats • Optional sliding electric sun roof (XE models) • Bi-level heater/defroster with 4-speed fan • Rear footwell heater outlets (XE models) • Vacuum-powered ventilation controls (XE models) • Center console (XE models).

Some items shown are optional. See the 1982 Nissan Stanza brochure for more complete information.

1982 EPA EST. NISSAN STANZA MPG

	49 States HWY/MPG	California HWY/MPG
2-Door Sedan: 5-speed	46/(32)	44/(30)
2-Door Sedan: Automatic*	-	-
4-Door Sedan: 5-speed	46/(32)	44/(30)
4-Door Sedan: Automatic*	-	-

Remember: Use estimated MPG for comparison. Your mileage may differ, depending on speed, weather and trip length. Your actual highway mileage will probably be less than the EPA estimated highway fuel economy.

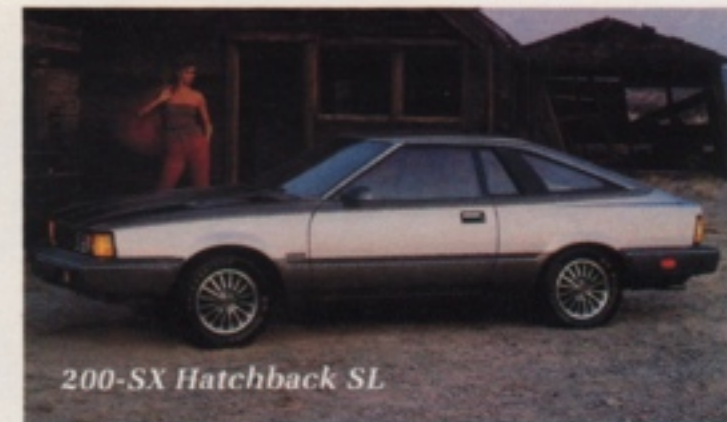
DIMENSIONS AND WEIGHTS

	2-Door Deluxe	4-Door Deluxe	2-Door XE	4-Door XE
Wheelbase (in.)	97.2	97.2	97.2	97.2
Length (in.)	170.9	173.4	170.9	173.4
Width (in.)	65.2	65.2	65.6	65.6
Height (in.)	53.9	54.7	53.9	54.7
Turning Diameter** (ft.)	32.1	32.1	32.1	32.1
Curb Weight† (lbs.)	2152	2160	2211	2220
Fuel Capacity (gals.)	14.3	14.3	14.3	14.3

*Available in early 1982. E.P.A. estimates not available at time of printing. **Curb to curb. †Vehicles with optional equipment will be slightly heavier.

1982 Datsun 200-SX. Sophistication that speaks for itself.

200-SX Hardtop SL



200-SX Hatchback SL



200-SX Hardtop Deluxe



200-SX Hatchback Deluxe

The 200-SX speaks for itself when you drive it. When you look at it. And even when you need to know about things like low fuel or keys left in the ignition. The vocalized warning system that actually talks to you in SL models is typical of the sophistication that makes the 200-SX a fine piece of machinery in which to go down the road. New for 1982 is the largest, most powerful engine ever in a 200-SX: the fuel-injected, 2.2-liter, overhead-cam NAPS-Z engine that represents the state of the art in high-performance, high-mileage powerplants.* It's a car for those who will settle for nothing less than elegance, sophistication and Nissan quality.

SPECIAL 200-SX HIGHLIGHTS

- 2.2-liter 4-cyl. OHC NAPS-Z engine
- L-Jetronic fuel injection • 5-speed overdrive manual transmission • 3-speed automatic with lock-up torque converter optional on Hardtop Deluxe and SL models
- Power steering (SL models)
- Power-assist 4-wheel disc brakes
- Remote fuel-filler door opener • Sports package, including alloy wheels and 3-position, lift-off sun roof with inner sun screen (optional on SL models)
- Optional fully integrated air conditioning
- Maintenance-free battery • Quadra-beam rectangular halogen headlights
- Power front windows (SL models)
- Illuminated ignition lock, ash tray and cigarette lighter • Quartz clock.

Some items shown are optional. See the 1982 Datsun 200-SX brochure for more complete information.

*1982 EPA ESTIMATED 200-SX MPG

	49 States HWY/MPG	California HWY/MPG
Hatchback: 5-speed	38/(26)	38/(26)
Hatchback: Automatic	33/(25)	33/(25)
Hardtop: 5-speed	38/(26)	38/(26)
Hardtop: Automatic	33/(25)	33/(25)

Remember: Use estimated MPG for comparison. Your mileage may differ, depending on speed, weather and trip length. Your actual highway mileage will probably be less than the EPA estimated highway fuel economy.

DIMENSIONS AND WEIGHTS

	Hatchback	Hardtop
Wheelbase (in.)	94.5	94.5
Length (in.)	176.2	176.2
Width (in.)	66.1	66.1
Height (in.)	51.6	51.6
Turning Diameter** (ft.)	34.1	34.1
Curb Weight† (lbs.)	2603	2576
Fuel Capacity (gal.)	15.9	14.0
Horsepower (5200 rpm)	102	102

**Curb to curb. †Vehicles with optional equipment will be slightly heavier.

1982 Datsun Maxima. Luxury and elegance with diesel or gasoline power.



Maxima Sedan



Maxima Wagon



Diesel Maxima Sedan



Maxima Interior

With scintillating performance thrown in for good measure. After all, where is it written that luxury cars have to be dull performers?

In the Maxima, you have your choice of a sports car engine from Datsun's legendary 240-Z, beautifully updated for the 1980's. Or the powerful Nissan diesel that was designed specifically to power a luxurious car like this one.* Maxima luxury goes on with the plush-est of interiors and Nissan's six-function vocalized warning system for ultimate refinement.

SPECIAL MAXIMA HIGHLIGHTS

- Choice of 2.4-liter fuel-injected 6-cyl. OHC gasoline engine or 2.8-liter 6-cyl. OHC diesel • 5-speed overdrive manual transmission standard on both sedans • 3-speed automatic transmission with lock-up torque converter optional on sedans, standard on wagons • Fully independent suspension (Sedans) • Rack-and-pinion power-assist steering • Power windows and door locks • Metal sliding electric sun roof (Gasoline models) • Fully integrated air conditioning and heating with rear footwell heater outlets • AM/FM 4-speaker stereo system with digital readout, plus seek and scan feature and cassette tape deck • Quadra-beam rectangular halogen headlights.

Some items shown are optional. See the 1982 Datsun Maxima brochure for more complete information.

1982 EPA ESTIMATED MAXIMA MPG

	49 States HWY/MPG	California HWY/MPG
Sedan: 5-speed	34/22	34/22
Sedan and Wagon: Automatic	28/21	28/21
Diesel Sedan: 5-speed	42/30	42/30
Diesel Sedan and Wagon: Automatic	38/28	38/28

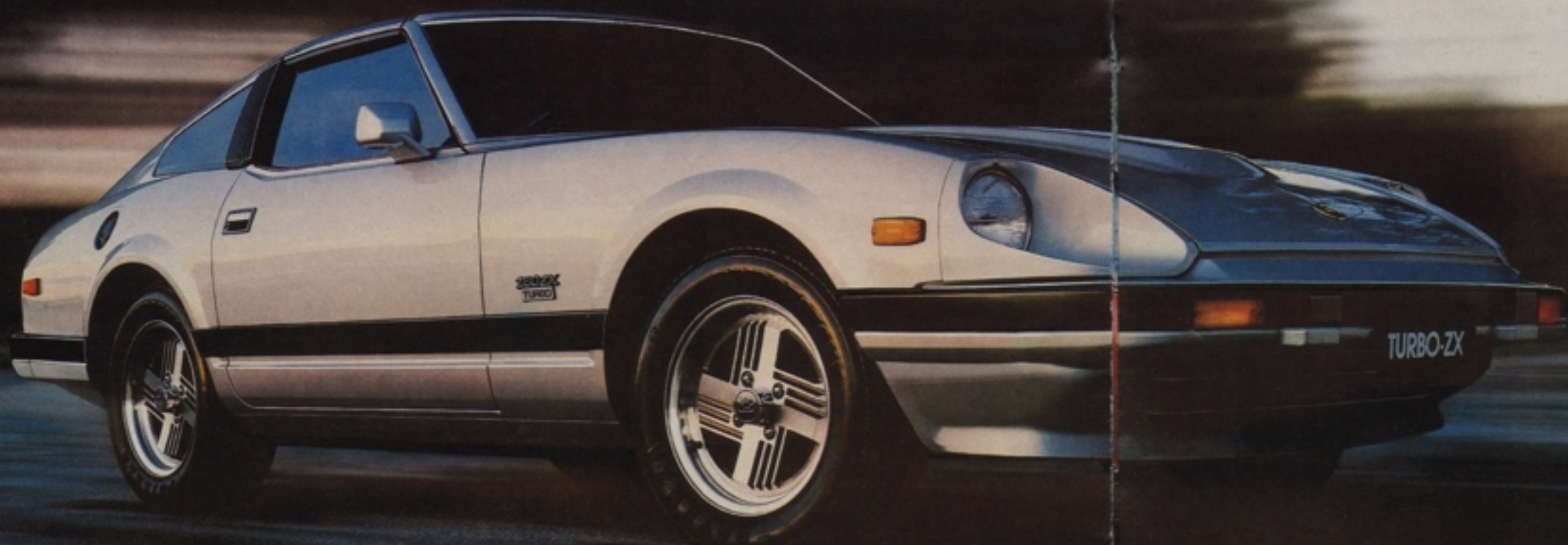
Remember: Use estimated MPG for comparison. Your mileage may differ, depending on speed, weather and trip length. Your actual highway mileage will probably be less than the EPA estimated highway fuel economy.

DIMENSIONS AND WEIGHTS

	Maxima Diesel Sedan*	Maxima Diesel Wagon*	Maxima Sedan	Maxima Wagon
Wheelbase (in.)	103.4	103.4	103.4	103.4
Length (in.)	183.3	186.8	183.3	186.8
Width (in.)	65.2	64.6	65.2	64.6
Height (in.)	54.5	55.7	54.5	55.7
Curb Weight**	3023	3120	2794	2897
Fuel Capacity (gal.)	16.4	15.9	16.4	15.9
Horsepower (4600 rpm)	80	80	-	-
Horsepower (5200 rpm)	-	-	120	120

*Diesel Maxima not available in some areas. **Vehicles with optional equipment or California emissions equipment will be slightly heavier.

1982 Datsun 280-ZX. Turbo or no, it's awesome and then some.



Turbo ZX 2-Seater



Turbo ZX 2+2



280-ZX 2-Seater



280-ZX 2+2

You have to look at the 280-ZX two ways: Turbo or non-Turbo. Either way, you have one awesome piece of sporting machinery. If you're thinking of converting to Turboism, now is the time. Because now you can choose your Turbo ZX as 5-speed manual or 3-speed automatic, 2-seater or 2+2.* You also get the functional NACA hood-scoop that funnels air to the 2.8-liter powerhouse that lives under the hood, whether you choose Turbo or regular ZX. Even if you choose not to Turbo, you'll be in the driver's seat of the car that sets a high standard for combining performance and luxury.

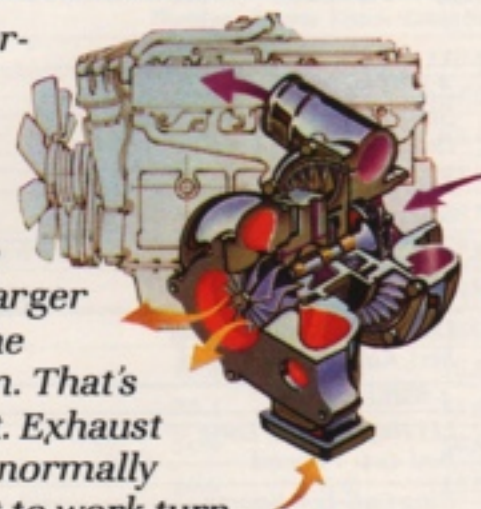
SPECIAL 280-ZX HIGHLIGHTS

- Choice of 2.8-liter 6-cyl., OHC engine or turbocharged 2.8-liter engine, both with L-Jetronic fuel injection and 3-way catalytic converter
- Power-assist 4-wheel disc brakes, ventilated in front
- Power-assist rack-and-pinion steering
- Halogen headlights
- T-bar roof standard on Turbo ZX, optional on other 280-ZX models
- Front spoiler
- Optional leather seat package
- Cruise Control
- AM/FM 4-speaker stereo system with high-output amplifier, digital readout, balance and fader controls and cassette tape deck
- 5-way vocalized warning system
- Fully integrated air conditioning and bi-level heater/defroster
- Aluminum alloy wheels.

Some items shown are optional. See the 1982 Datsun 280-ZX brochure for more complete information.

DATSUN'S TURBO ZX ENGINE

The main difference between the Turbo ZX engine and ordinary ones is that this one has a supercharger that runs off the exhaust system. That's the beauty of it. Exhaust gases that are normally wasted are put to work turning a turbine that runs the supercharger. That's why it's called a turbocharger. It's almost something for nothing.



DIMENSIONS AND WEIGHTS

	280-ZX 2-Seater	280-ZX 2+2	Turbo ZX	Turbo 2+2
Wheelbase (in.)	91.3	99.2	91.3	99.2
Length (in.)	174.0	181.9	174.0	181.9
Width (in.)	66.5	66.5	66.5	66.5
Height (in.)	51.0	51.4	51.0	51.4
Curb Weight** (lbs.)	2796	2891	-†	3007
Fuel Capacity (gal.)	21.1	21.1	21.1	21.1
Horsepower (5200 rpm)	145	145	-	-
Horsepower (5600 rpm)	-	-	180	180

*5-speed Turbo ZX available in early 1982. **Vehicles with optional equipment will be slightly heavier. †Not available at time of printing.

Diesel or gas, they're tough trucks for tough customers.



King Cab GL



Heavy Duty Long bed

We started America compact-trucking more than 20 years ago. And we keep right on leading the way. Only Datsun gives you a choice of diesel power and NAPS-Z hemi gasoline power. And it is one tough choice. We make it tougher because you have to select from King Cab,[®] Long bed, Li'l Hustler and the Sports Truck. But no matter what your choice, you can't go wrong.

SPECIAL TRUCK HIGHLIGHTS

- Choice of 2.2-liter diesel (Deluxe models) or 2.2-liter NAPS-Z
- 5-speed overdrive manual transmission (all 2WD models except Standard Li'l Hustler and Heavy Duty Long bed)
- Power-assist front disc brakes
- Independent front suspension
- Bi-level heater/defroster.

Some items shown are optional. See the 1982 Datsun Trucks brochure for more complete information.

1982 EPA ESTIMATED TRUCK MPG

	49 States HWY/MPG	California HWY/MPG
2-WHEEL DRIVE		
Standard Li'l Hustler, Heavy Duty Long bed: 4-speed	32/25	31/24
Li'l Hustler, King Cab, Sports Truck: 5-speed	35/26	31/24
King Cab: Automatic	27/23	27/22
Diesel Li'l Hustler, Long bed, King Cab: 5-speed	39/33	39/33
4-WHEEL DRIVE		
Li'l Hustler 4x4, Long bed 4x4: 4-speed	28/22	27/20
King Cab 4x4, Sports Truck 4x4: 5-speed	30/22	26/19

Remember: Use estimated MPG for comparison. Your mileage may differ, depending on speed, weather and trip length. Your actual highway mileage will probably be less than the EPA estimated highway fuel economy.



Li'l Hustler



Diesel King Cab



Diesel Long bed



Sports Truck



Diesel Li'l Hustler

DIMENSIONS AND WEIGHTS

	2-WHEEL DRIVE					4-WHEEL DRIVE		
	Standard Li'l Hustler	Deluxe Li'l Hustler & Sports Truck	Heavy Duty Long bed ¹	Deluxe Long bed Diesel	King Cab	Li'l Hustler & Sports Truck	Long bed	King Cab
Wheelbase (in.)	101.4	101.4	110.8	110.8	110.8	101.4	110.8	110.8
Length (in.)	169.3	171.7	187.0	187.0	187.0	171.7	187.0	187.0
Width (in.)	63.4	63.4	63.4	63.4	63.4	66.3 ²	66.3 ²	66.3 ²
Height (in.)	61.2	61.2	61.8	61.0	61.2	67.1	66.9	67.1
Turning Circle (ft.) ³	34.1	34.1	36.7	36.7	36.7	38.1	40.7	40.7
Min. Ground Clearance (in.)	7.9	7.9	7.9	7.9	7.9	8.9	8.9	8.7
Curb Weight (lbs.) ⁴	2460	2470 ⁵	- ⁶	- ⁵	2570 ⁵	2890	2970	2985
Payload (lbs.)	1400	1400	1800	1400	1400	1400	1400	1400
Fuel Capacity (gal.)	13.2	13.2	16.9	16.9	13.2	15.9	19.8	15.9
Bed Length (in.)	73.4	73.4	88.8	88.8	73.4	73.4	88.8	73.4
Bed Width (in.)	56.9	56.9	56.9	56.9	56.9	56.9	56.9	56.9
Bed Depth (in.)	15.6	15.6	15.6	15.6	15.6	15.6	15.6	15.6
Horsepower (Gas) @ 5200 rpm	98	98	98	-	98	98	98	98
Horsepower (Diesel) @ 4000 rpm	-	61	-	61	61	-	-	-

¹Sports Truck and Heavy Duty Long bed not available with diesel. ²With optional fender flares ³Curb to Curb ⁴Vehicles with optional equipment or California emissions equipment will be slightly heavier ⁵Diesel weights not available at time of printing. ⁶Heavy Duty Long bed weight not available at time of printing.

1982 Datsun 4x4 Trucks. For rocks and hard places.



King Cab 4x4



Li'l Hustler 4x4



Long bed 4x4



Sports Truck 4x4

Their mission in life is to take you to uncivilized places in civilized comfort. And to do it with the performance and economy of the NAPS-Z engine.* Inside and outside, these are handsome, comfortably appointed driving machines for on the road or off. And of course they're put together the only way Nissan knows how: with quality, with care and with pride. They're made to let you answer the call of the wild. In style.

SPECIAL 4X4 HIGHLIGHTS

- 2.2-liter 4-cyl. OHC NAPS-Z hemi engine
- 5-speed overdrive manual transmission (Deluxe King Cab® and Sports Truck)
- Independent front suspension
- Front stabilizer bar
- 1.000 (high) and 2.074 (low) transfer-case ratios
- Tinted glass throughout.

*See EPA estimates, page 14

Some items shown are optional. See the 1982 Datsun Trucks brochure for more complete information.

All illustrations and specifications in this catalog are based on the latest product information available at time of publication. Nissan Motor Corporation in U.S.A. reserves the right to make changes at any time, without notice, in prices, colors, materials, equipment, specifications and models, and to discontinue models or equipment. For information on additional options and accessories, contact your Datsun dealer. All specifications, options and accessories may differ in Hawaii, U.S. territories and other countries.

DATSUN **WE ARE DRIVEN**

PRODUCT OF NISSAN

