

NISSAN'S 1986 CARS AND TRUCKS

QUALITY AT EVERY TURN



LIVE WITHIN A BUDGET IN STYLE.

You tell yourself to be practical, but you still want the good things in life—and you don't want to wait years and years to get them. Then don't!

With nine front-wheel-drive models to choose from, the Nissan Sentra

makes it easy to find the right combination of comfort, styling and fuel economy.* And you can get it all for a very reasonable sticker price.

Every Sentra—from our most affordable 2-Door model on up to our top-of-the-line SE Coupe—

offers plenty of room for five adults. Plus, a trunk that's extremely generous. Sentra is powered by a powerful, 1.6-liter, overhead-cam engine that you can team with either a 5-speed overdrive synchromesh transaxle or an optional 3-speed automatic with a fuel-saving, lock-up torque converter (except on

Standard and SE models). Either way, you get plenty of zoom to go with all the room.

See for yourself. Whether 2-Door or 4-Door, Hatchback, Sedan or Wagon, you'll be amazed at how much Sentra comes with and how little it goes for.

NISSAN SENTRA HIGHLIGHTS

- Power front disc brakes
- Rack-and-pinion steering
- Electric rear-window defroster with timer
- Remote, locking fuel-filler door (Deluxe, XE and SE models)
- Halogen headlights
- Tinted glass windows (Deluxe, XE and SE

- models) • Fully independent suspension
- Reclining front seat-backs
- Flow-through ventilation... and much, much more.

*Nissan Sentra with 5-Speed: 38 EST HWY/31 EST CITY
 Nissan Sentra with Automatic: 30 EST HWY/27 EST CITY
 1986 E.P.A. estimates. Remember use these E.P.A. estimates for comparison. Actual mileage may vary depending upon driving conditions.



NISSAN SENTRA XE 4-DOOR SEDAN



NISSAN SENTRA STANDARD 2-DOOR SEDAN



NISSAN SENTRA XE 2-DOOR SEDAN



NISSAN SENTRA SE HATCHBACK COUPE



NISSAN SENTRA XE WAGON

Some items shown are optional. See the 1986 Nissan Sentra brochure for more complete information.

NISSAN PULSAR NX

THERE'S EXCITEMENT FOR EVERYONE.

Fresh innovative styling and exhilarating performance is what Nissan Pulsar NX is all about.

For instance, a unique aerodynamic design gives the Pulsar NX a low drag coefficient of just 0.37. This translates into better

performance and outstanding mileage,* and both have been improved even more by the 1.6-liter, overhead-cam engine.

You can team this power with the standard 5-speed overdrive manual all-synchromesh transmission or the optional 3-speed automatic with

lock-up torque converter. And to deliver the precise, road-holding performance you need to breeze around sharp curves, there are standard features such as power rack-and-pinion steering, steel-belted radial tires, power front disc brakes and 4-wheel independent suspension.

For true value, the name is Nissan.



NISSAN PULSAR NX

NISSAN PULSAR NX HIGHLIGHTS

- 1.6-liter, overhead-cam engine
- Reclining bucket seats
- Pop-up sun roof
- AM/FM electronically tuned stereo with four speakers... and much more.

*Nissan Pulsar NX with 5-Speed: 38 EST HWY/31 EST CITY
Nissan Pulsar NX with Automatic: 30 EST HWY/27 EST CITY
1986 E.P.A. estimates. Remember use these E.P.A. estimates for comparison. Actual mileage may vary depending upon driving conditions. Some items shown are optional. See the 1986 Nissan Pulsar NX brochure for more complete information.



COMFORTABLE INTERIOR OF PULSAR NX

NISSAN STANZA

YOU'RE ON YOUR WAY UP.

Perhaps you're just starting out, and all your goals are in front of you. Well, with the Nissan Stanza GL Sedan, and the Stanza 2-Wheel and 4-Wheel-Drive Wagons, you can reach some very important goals right now.

Your Nissan Stanza not only ensures roominess and economy,* but also high quality, competitive performance and beautiful styling.

With the all-new Nissan Stanza Wagon, you and your family will enjoy extraordinary spaciousness. With its dual sliding doors and pillarless construction, the Stanza

Wagon features a huge, unobstructed side-loading area. Getting in and out is incredibly easy—even in the tightest spots. Plus, with our Stanza Wagon 4-Wheel-Drive model you can transport your family with extra safety in rain and snow.

So stretch out in style with Stanza. It won't stretch your budget.



NISSAN STANZA GL SEDAN



NISSAN STANZA 2-WHEEL-DRIVE WAGON



NISSAN STANZA 4-WHEEL-DRIVE WAGON

NISSAN STANZA HIGHLIGHTS

- 2.0-liter, 4-cyl. OHC fuel-injected NAPS-X engine
- 4-wheel independent suspension
- Power ventilated front disc brakes
- Power rack-and-pinion steering
- Optional power sun roof
- ...and much, much more.

- Nissan Stanza GL with 5-Speed: 33 EST HWY/26 EST CITY
 - Nissan Stanza 2WD Wagon w/5-Spd: 28 EST HWY/23 EST CITY
 - Nissan Stanza 4WD Wagon w/5-Spd: 24 EST HWY/20 EST CITY
- 1986 E.P.A. estimates. Remember use these E.P.A. estimates for comparison. Actual mileage may vary depending upon driving conditions. Some items shown are optional. See the 1986 Nissan Stanza brochure for more complete information.

IT'S AS GOOD AS IT LOOKS.

Nissan has a lot of ways for you to look good—such as our 200 SX Notchback, Hatchback and Turbo models.

For instance, the Nissan 200 SX Turbo will appeal to your spirit of

adventure and to your sense of style in a way few other cars can. Powered by a turbocharged, electronically fuel-injected, 1.8-liter engine, the Nissan 200 SX Turbo combines lightning quick response with precise handling.

Once you set its wheels in motion, just watch the heads turn as its aerodynamic body moves through the air with the greatest of ease.

The Nissan 200 SX also makes it easy to live within a budget with the Hatchback and Notchback in E or XE trim. They all

deliver a seemingly endless list of standard luxuries—not to mention an impressive number of available options—from the power of a fuel-injected, 2.0-liter, overhead-cam engine to the sporty, low-profile, steel-belted radial tires.

If you're one of those people who appreciates top performance and admires sleek, good looks, there's nothing quite like the Nissan 200 SX.

rack-and-pinion steering
● Cruise control (XE and Turbo models) ● Tilt steering column ● AM/FM electronically tuned stereo with digital readout
● Pop-up halogen headlights... and much, much more.

NISSAN 200 SX HIGHLIGHTS

- Aerodynamic styling
- 4-wheel independent suspension
- Power



NISSAN 200 SX TURBO INSTRUMENT PANEL



NISSAN 200 SX TURBO INTERIOR



NISSAN 200 SX TURBO



NISSAN 200 SX XE HATCHBACK



NISSAN 200 SX XE NOTCHBACK

LUXURY WITH PERFORMANCE.

It used to be that you had to decide between luxury and performance when buying a car. But now all you have to decide on is Maxima. With the Nissan Maxima you can have it all in our luxurious GL Sedan, our sporty

SE Sedan and our popular Maxima Wagon.

Consider for a moment the performance of the Maxima GL Sedan. Its fuel-injected, overhead-cam V6 engine is the same powerplant that propels the awesome Nissan 300 ZX. And, it's teamed

with a 4-speed automatic with overdrive, 4-wheel independent suspension, power rack-and-pinion steering and more.

Now, consider the luxury. Its Digital Touch Entry System on the GL models admits you to a spacious passenger compartment that's complemented by an extremely

generous cargo-carrying area. And, there are luxury items almost everywhere you look—from the 6-speaker AM/FM electronically tuned stereo to the theft-deterrent system for added security.

But then, that's what makes a Nissan Maxima

so special. So if you're looking for luxury and performance, your decision is obvious. Maxima.

NISSAN MAXIMA HIGHLIGHTS

- Standard AM/FM electronically tuned digital 6-speaker stereo with graphic equalizer and Dolby® cassette deck

- 4-wheel independent suspension
- Power rack-and-pinion steering
- Fully integrated air conditioning
- Power windows and door locks
- Power sun roof standard on GL Wagon and SE, optional on GL Sedan . . . and much, much more.



NISSAN MAXIMA GL SEDAN



Nissan Maxima combines a fuel-injected, 3.0-liter V6 engine with features like front-wheel drive and power rack-and-pinion steering to give you a smooth ride and better handling.



NISSAN MAXIMA GL WAGON



NISSAN MAXIMA SE SEDAN

Some items shown are optional. See the 1986 Nissan Maxima brochure for more complete information.

THE LATEST CHAPTER IN A GLORIOUS HISTORY.

With its new, streamlined body, aerodynamic undercarriage and integrated fender flares, the 1986 Nissan 300 ZX is more agile than ever. There are also new 16" wheels and larger tires on

the Turbo model to give you a wider track and a better grip on the road.

There are three ZX models to choose from: Turbo, 2-Seater and 2+2. All have the stuff that has made the Z-car one of America's most desirable sports cars for over 15 years. Power. Performance. Precision handling. Plus,

the distinctive styling that turns heads everywhere it goes.

The Nissan 300 ZX Turbo, for example, has a fuel-injected, turbo-charged, 3.0-liter V6. A racing version of the same engine propels Nissan's all-new GTP ZX race car to blistering speeds of approximately 215 m.p.h. on the track.

Other features that make the 300 ZX Turbo a performance star include 3-way adjustable suspension, 5-speed overdrive manual transmission, power rack-and-pinion steering and 4-wheel independent suspension to smooth out the sharp curves.

In motion or at rest, the 300 ZX Turbo is a joy

to behold. And as the latest successor in a legendary line, it continues the tradition of the Z-car in a manner that not only lives up to, but surpasses, its predecessors.

NISSAN 300 ZX HIGHLIGHTS

- 3.0-liter, overhead-cam V6 engine
- Fully integrated air conditioning

- 4-wheel independent suspension
- Optional Leather Package
- Optional Electronic Equipment Package with 80-watt AM/FM stereo, graphic equalizer and microprocessor-controlled automatic air conditioning
- 3-way driver-adjustable shock absorbers (Turbo) . . . and much, much more.



NISSAN 300 ZX ANALOG INSTRUMENT PANEL



NISSAN 300 ZX OPTIONAL LEATHER INTERIOR



NISSAN 300 ZX TURBO



NISSAN 300 ZX 2-SEATER



NISSAN 300 ZX 2+2

THEY'LL TAKE YOU WHERE YOU WANT TO GO.

Tough and mean never looked as good as it does on Nissan 4x4 Trucks. Like all Nissan Trucks, they feature a double-wall cargo bed design that's smooth, sleek and seamless.

And that's just the start of all the value

Nissan 4x4 Trucks deliver. For instance, our 4x4 ST's are powered by the new Z24i engine. Nissan's NAPS-Z twin-spark hemi head design is teamed with electronic fuel injection, making it one of the most highly innovative engines of our era. Nissan has teamed the Z24i with Nissan's standard 5-speed overdrive manual trans-

mission. Its automatic front-locking hubs can put you in the 4-wheel mode without making you leave the cab. With its independent front suspension and extra-high ground clearance, this is one truck that will take you almost anywhere.

Inside, this 4x4 offers comfortable reclining

seats with adjustable lumbar support on the driver's side. Plus a whole truck-load of other standard features including an AM/FM electronically tuned stereo. And on the King Cab ST, there are jump seats for extra passengers.

In addition, there are six other models available, including two versions of our rugged Nissan Long

Bed—both with a tough, double-wall cargo bed over seven feet long.

Nissan's 4x4 Trucks—rough and rugged on the outside, yet gentle and easy-going on the inside.

NISSAN 4x4 TRUCK HIGHLIGHTS

- Seamless, double-wall cargo bed
- New Z24i, 2.4-liter, twin-spark hemi

head engine with fuel-injection on ST models.

- Power-ventilated front disc brakes
- Sliding rear window (except Standard)
- On-command 4-wheel drive (Deluxe and ST models)
- 9 cubic feet of lockable storage space (King Cab)
- Power steering with tilt steering column (except Standard) . . . and much, much more.



NISSAN 4x4 LONG BED ST



NISSAN 4x4 REGULAR BED ST



NISSAN 4x4 KING CAB ST



NISSAN 4x4 LONG BED DELUXE



NISSAN 4x4 REGULAR BED STANDARD

NISSAN 4x2 TRUCKS

PRACTICAL TO WORK WITH, AND FUN TO PLAY WITH.

They say that versatility is the sign of genius, and that's what Nissan 4x2 Trucks are all about. They're designed and built to fit right in with your lifestyle - whether you're on the job or on the town.

All of our Nissan 4x2 Trucks feature a smooth, seamless, double-wall cargo bed for added durability. Plus, the only twin-spark hemi head engine going. In fact, no other leading compact truck gets as much torque from its standard engine. And it's backed by a 5-speed overdrive manual

transmission (optional automatic available), power-ventilated, front disc brakes, and power steering with a tilt steering column (not available on Standard models).

Inside our new Nissan Trucks, you'll find plenty of easy-to-live-with features, like 3-across seating in our conventional cab 4x2 models, jump

seats for extra passengers in King Cab models (except Standard), side window defoggers and plenty more.

And if you're the sort of person who gets right down to business, take a good close look at our Nissan Cab & Chassis. It's built on a heavy-duty frame with heavy-duty rear springs to handle a

hard day's work, every day. And it comes with factory-installed dual rear wheels.

Nissan 4x2 Trucks. Whether for work, or whether for play, they're way ahead of all the rest.

NISSAN 4x2 TRUCK HIGHLIGHTS

- Smooth, seamless, double-wall cargo bed
- 2.4-liter, twin-spark

hemi head engine

- 4-passenger seating in King Cab Deluxe and ST models with standard fold-down jump seats
- Alloy wheels (ST models)
- 90/180 degree tailgate opening
- Optional pop-up sun roof (ST models)
- Sliding rear window (ST models) ... and much, much more.



NISSAN KING CAB ST



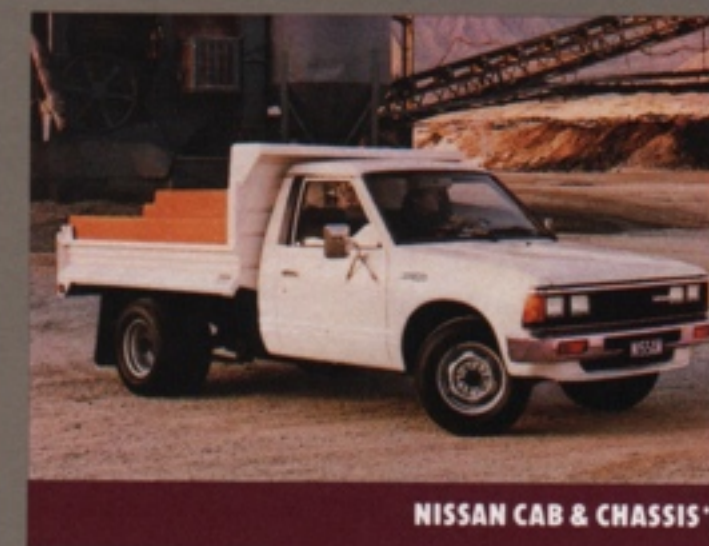
NISSAN REGULAR BED STANDARD



NISSAN LONG BED ST



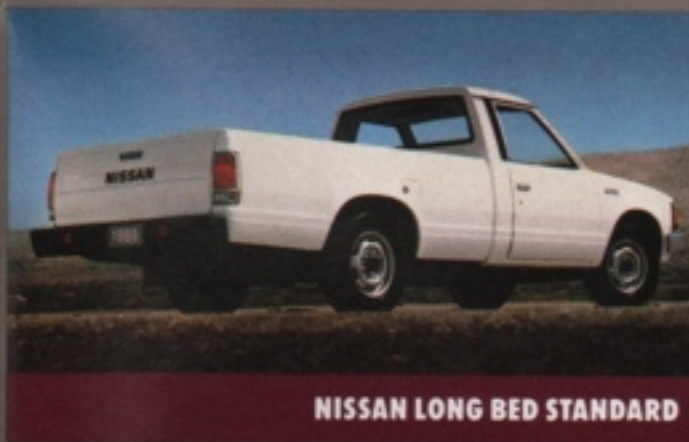
NISSAN KING CAB DELUXE



NISSAN CAB & CHASSIS*



NISSAN REGULAR BED ST



NISSAN LONG BED STANDARD

*Cab & Chassis bodies and campers are not manufactured or sold by Nissan but are available from other sources. Some items shown are optional. See the 1986 Nissan Truck brochure for more complete information.

**BELT
YOURSELF**  **NISSAN**

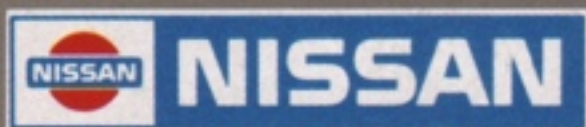
Nissan Motor Corporation in U.S.A. and your Nissan dealer urge you to be a smart driver and use your safety belt whenever you drive. It does save lives. Remember, if you don't belt yourself, you're kidding yourself.

All illustrations and specifications in the catalog are based on the latest product information available at time of publication. Nissan Motor Corporation in U.S.A. reserves the right to make changes at any time, without notice, in prices, colors, materials, equipment, specifications and models, and to discontinue models or equipment. For information on additional options and accessories, contact your Nissan dealer. All specifications, options and accessories shown in this catalog apply to the 49 states. Specifications, options and accessories may differ in Hawaii, U.S. territories and other countries.

NCT-S-6102-10-85 325M-AL-1

© Copyright, 1985.

Nissan Motor Corporation in U.S.A.



THE NAME IS
NISSAN