



1994 CADILLAC NORTHSTAR SERIES

SEVILLE STS

SEVILLE SLS

ELDORADO TOURING COUPE

ELDORADO

DEVILLE CONCOURS

C O N T E N T S

SEVILLE STS	2-11
SEVILLE SLS	12-15
ELDORADO TOURING COUPE	16-23
ELDORADO	24-27
DEVILLE CONCOURS	28-35
THE NORTSTAR SYSTEM	36-41
POWERTRAIN	42-43
HANDLING	44-45
SAFETY SYSTEMS	46-47
OWNERSHIP	48-49
SPECIFICATIONS	50-53
INTERIOR COLORS	54
EXTERIOR COLORS	INSIDE BACK COVER





N

This is a catalog of especially distinguished automobiles.

O

Each one creates a higher standard by virtue of the astonishing Cadillac Northstar System:

R

an extraordinary union of science and machine.

T

In essence, it is an unprecedented coordination of powertrain, suspension, traction control

H

and braking technologies. For the driver, this orchestration

S

provides a level of performance, control and peace of mind available in no other

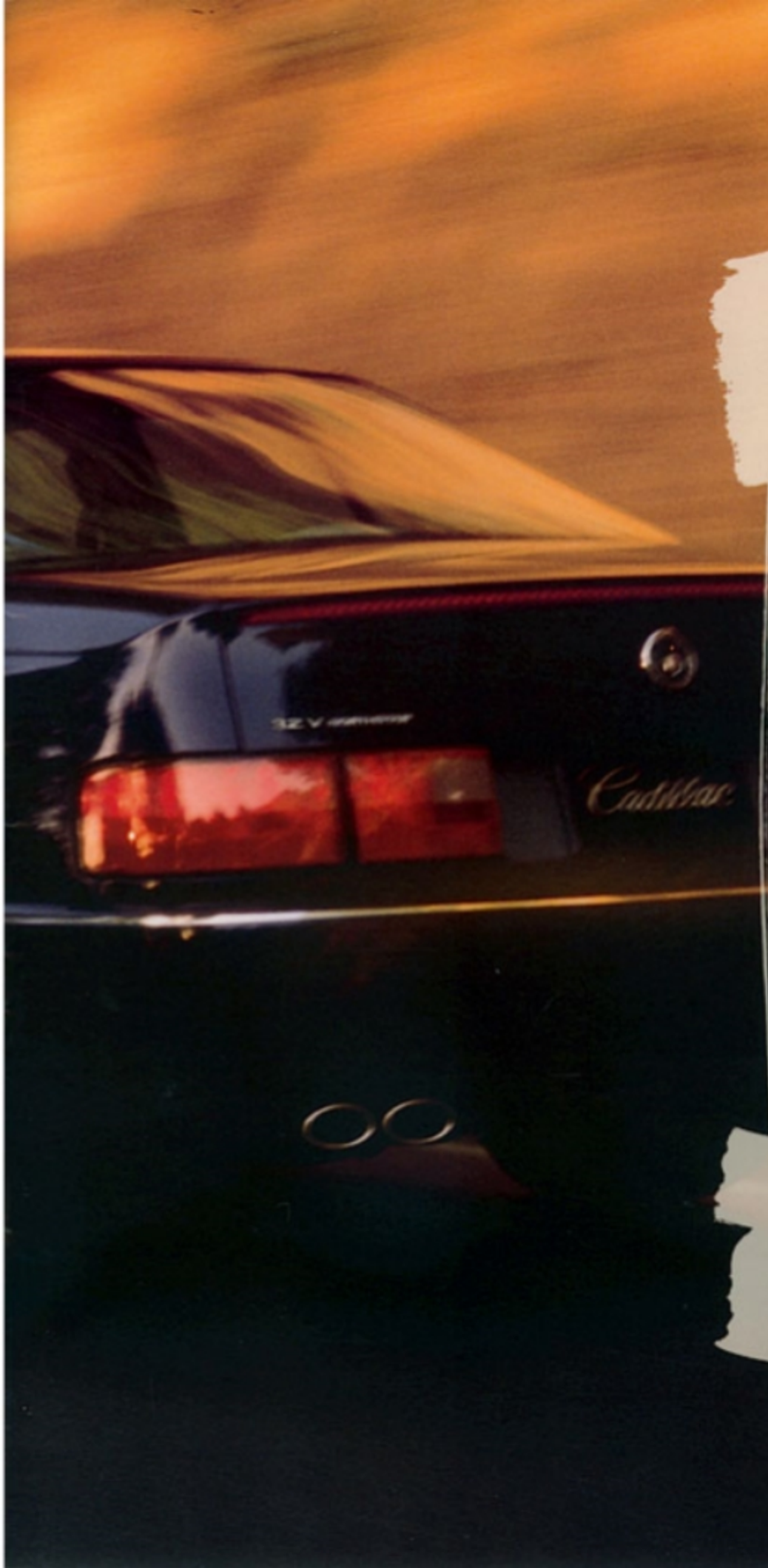
T

luxury automobile on the market today. With the Northstar System,

A

Cadillac has literally created a higher standard for the world.

R



SEVILLE STS

1
As one of the most respected sport sedans in
9
the world, STS underscores the fact that
9
Cadillac is indeed creating a higher standard.
4
The Northstar System of STS is responsive
beyond question with a 295-hp V8, and agile
beyond expectation with a sophisticated
real-time Road-Sensing Suspension. STS stands
alone through a unique unification of high
performance and uncommonly restrained elegance.

Seville's Northstar V8 is scheduled to go 100,000 miles
— four times around the world — before its first tune-up.





SEVILLE STS

The heart of STS is the Northstar System with its 32-valve V8. But there's also a four-speed automatic transmission, electronically synchronized with the engine. The real-time Road-Sensing Suspension is designed to continuously adjust for optimum control and handling.





The rewards of driving an STS should be commensurate with those of owning one.

To that end, natural leathers are used to cover the shift handle and new four-spoke steering wheel rim. On seating areas, perforated Nuance leather lends a richly supple yet comfortably breathable surface.

Both the driver and front passenger seats feature an anatomical design, achieved with the aid of infrared imaging. This technology helped to identify and reduce fatiguing pressure points, and enhance driving comfort. Front Suspension Seating provides cushioned support yet allows the individual to move *with* the automobile's ride motions rather than against them.

It's like a suspension system for the seats themselves. A four-way power lumbar adjustment is also built in.



As the luxurious interior of an STS unfolds, its higher standard is evident through the tasteful accent of natural Zebrano wood trim. Inlaid along the dash, console and doors, each piece consists of selected laminates bonded to a strong aluminum core. Master craftsmen, schooled in classic wood-finishing techniques, meticulously match each Zebrano piece as it goes through hand-selection, sanding and polishing processes. Every piece is even individually "signed" to assure matching. The result is a rich beauty that only nature can create. Beyond its automatically regulated air conditioning, creature comforts for STS occupants include an available Delco/Bose Gold Series system specifically equalized for the Seville's interior. And for 1994, an available trunk-mounted CD changer will

accommodate up to six CDs.

Equally thoughtful, but inconspicuous, is the occupant protection system of STS.

This includes dual front air bags* as well as individual comfort-adjustable safety belts for front occupants and easily accessible safety belt latches for rear-seat passengers.

**Always wear safety belts, even with air bags.*

An electric sunroof is available for STS. It includes an "express open" feature as well as a special deflector that virtually eliminates air turbulence in the cabin.





SEVILLE SLS

For 1994, the Seville Luxury Sedan (SLS) creates a higher standard of its own with a specially tailored Northstar System, featuring a 270-horsepower 32-valve V8. Its real-time Road-Sensing Suspension is tuned for precise handling and an outstanding ride.



New 4-spoke steering wheel and available Naim leather seating areas grace the interior of Seville SLS.



The amenities of SLS gratify each of the senses in turn. From its exterior, the eye can delight in any of five new colors plus a redesigned grille. Inside, genuine Zebrano wood highlights a visual tour de force of interior design. Slip into the seat and your senses of touch and olfactory are immediately cued to attention. The scent of natural leather greets you as you notice the steering wheel rim and available seating areas upholstered in this especially tactile material. Instrumentation is digital, with supplementary data displayed in

complementary electronic characters. As a driver of SLS, your sense of control is paramount with Northstar's real-time Road-Sensing Suspension, anti-lock brakes and full-range Traction Control system. And, thanks to unusually effective acoustic enhancements, virtually no exterior noise is allowed to meddle in your conversation or the crystalline notes from the optional, trunk-mounted CD changer. All you need do is check the self-dimming Electrochromic inside rearview mirror for traffic, and proceed with confidence.



ELDORADO
TOURING COUPE

1
The Eldorado Touring Coupe is designed to
9
create a higher standard of driving satisfaction
9
through the strength and agility of its exclusive
4
Northstar System: a union of powertrain,
suspension and safety features that allows it to
function like your partner on the highway —
a responsive companion to you, the driver.

The dependability of the Northstar System V8 is such
that, if necessary for your safety, you could travel 50
miles in desert heat without engine coolant.





ELDORADO TOURING COUPE 19

The Eldorado Touring Coupe, with the Northstar System, is in tune with a more international driving style because its 295-horsepower Northstar V8 gives you sustained response, even at highway speeds. The technology within is a showcase on any road, in any country.







Inside the Eldorado Touring Coupe, every detail focuses on your need for control and refinement. The aesthetics of a personal performance car are most pronounced, from the backlit analog gauges and hand-finished Zebrano wood to the enhanced safety of dual front air bags.* There's exceptional comfort too, with patented power lumbar supports that adjust to the precise height and depth you require to provide optimum back support.

**Always wear safety belts, even with air bags.*



Eldorado creates a higher standard of expression for the American driver. From its specially tuned 270-hp Northstar V8 to its new dual elliptical exhaust outlets, one ride lets you know: This is a luxury coupe that responds to those who demand a higher standard of performance and refined comfort.



Eldorado's luxury appointed interior with available leather seating areas caters graciously to your comfort with virtually every amenity, and the room for you and your passengers to enjoy them.



Eldorado's fresh approach to grand touring emanates from the inside out. Its 32-valve Northstar V8, new to Eldorado this year, produces 300 lbs-ft of torque – the most of any front-drive automobile sold in America. The result is quicker off-the-line acceleration. And the full-range Traction Control helps eliminate unwanted wheel spin at any speed. With the specially tuned real-time Road-Sensing Suspension (RSS), Eldorado has a more comfortable overall ride as well – because RSS reads and reacts to the road for spirited, controlled corner-

ing and smooth, compliant road manners. The engine is mated to an electronically controlled four-speed automatic transmission to produce nearly imperceptible shifting. And yet, Eldorado's exhilarating performance requires *less* maintenance, because the Northstar powerplant is so meticulously engineered it will not require its first scheduled tune-up for 100,000 miles. An inside automatic-dimming Electrochromic rearview mirror reduces the glare of headlights from behind, while Solar Ray

tinted glass also reduces glare from the outside as it helps keep the interior cool. Inside, available analog instrumentation along with a new four-spoke steering wheel put you at the helm of a true driver's coupe. Dual air bags,* used to supplement safety belts, enhance driver and front passenger safety, while a new comfort-adjustable front shoulder belt makes safety more personalized. At the same time, the five-passenger Eldorado is more spacious than many luxury sedans.

*Always wear safety belts, even with air bags.

DEVILLE

For centuries, the North Star has guided man's travels. Now, with the introduction of

C

the Northstar System, Cadillac creates a higher standard of automotive travel in

O

an entirely new class of luxury automobile ... the Cadillac DeVille Concours.

N

So spacious, it indulges six passengers in complete comfort, while especially

C

benefiting the driver because its comfort is engineered to help you remain refreshed drive

O

after drive. So responsive, its advanced V8 Northstar System makes passing

U

and merging virtually effortless. And the DeVille Concours may not require its first

R

100,000-mile scheduled tune-up until after the turn of the century.

S





DeVille Concours embodies Cadillac's highest standard of full-size luxury with interior refinements as purposeful as they are aesthetically pleasing. It begins with the ergonomic contour of a sculpted dash, continues by surrounding you on three sides with richly grained Zebrano wood, finally enveloping you in the luxury of leather seating areas that are naturally tanned so they are garment soft, and perforated to enhance their breathability... and your comfort.

The refreshing support of Suspension Seating acts as a second shock absorber for back support – a benefit that should help the DeVille Concours' driver and front

passenger stay alert mile after mile.

Thoughtfully placed readouts, exceptional in their logic and clarity, are matched in functionality with patented four-way power lumbar seats and a "two-driver" memory function to adjust the driver's seat.

The driver's environment is further enhanced by a front chair height that offers a superior view of the road ahead, and for your passengers, extra rear-seat bolstering at an angle that augments comfort.

Because safety is important, DeVille Concours uses an Airbank System: dual front seat air bags* that work together to provide supplemental protection for all three front seat passengers.



**Always wear safety belts, even with air bags.*

The DeVille Concours eloquently speaks the language of the road. With the sophisticated Northstar System and spacious six-passenger interior, it is a combination of qualities you've never seen before. Yet, a single drive will make you wonder why you ever settled for less.





Z

As a dynamic device, the automobile is an amalgam of various systems:

O

Drivetrain, brakes, suspension and tires all play their individual and essential roles. And while

R

such an approach is sufficient for commonplace automobiles, Cadillac felt compelled to create a higher standard.

T

The result is the Northstar System. In sum, it is a precise orchestration of engineering,

H

scored to draw each system of an automobile into perfect harmony with the next while focusing

S

the whole toward a unified purpose. For the very special automobiles you'll find in

T

this catalog, that purpose is control. It is a sense of confidence and response that has

A

never been created in a luxury automobile before. From that perspective, the Northstar System

R

is not so much a triumph of technology as it is a benchmark of innovation.



THE NORTHSTAR SYSTEM

At the heart of every Northstar System is the world-renowned Northstar 4.6L V8 – a higher standard in its own right. It is built around a strong but light cast aluminum block and heads with cylinder liners of cast iron. Dual overhead cams for each cylinder bank are driven by precision-engineered chains that are as quiet as, yet more durable than, common belt drives.



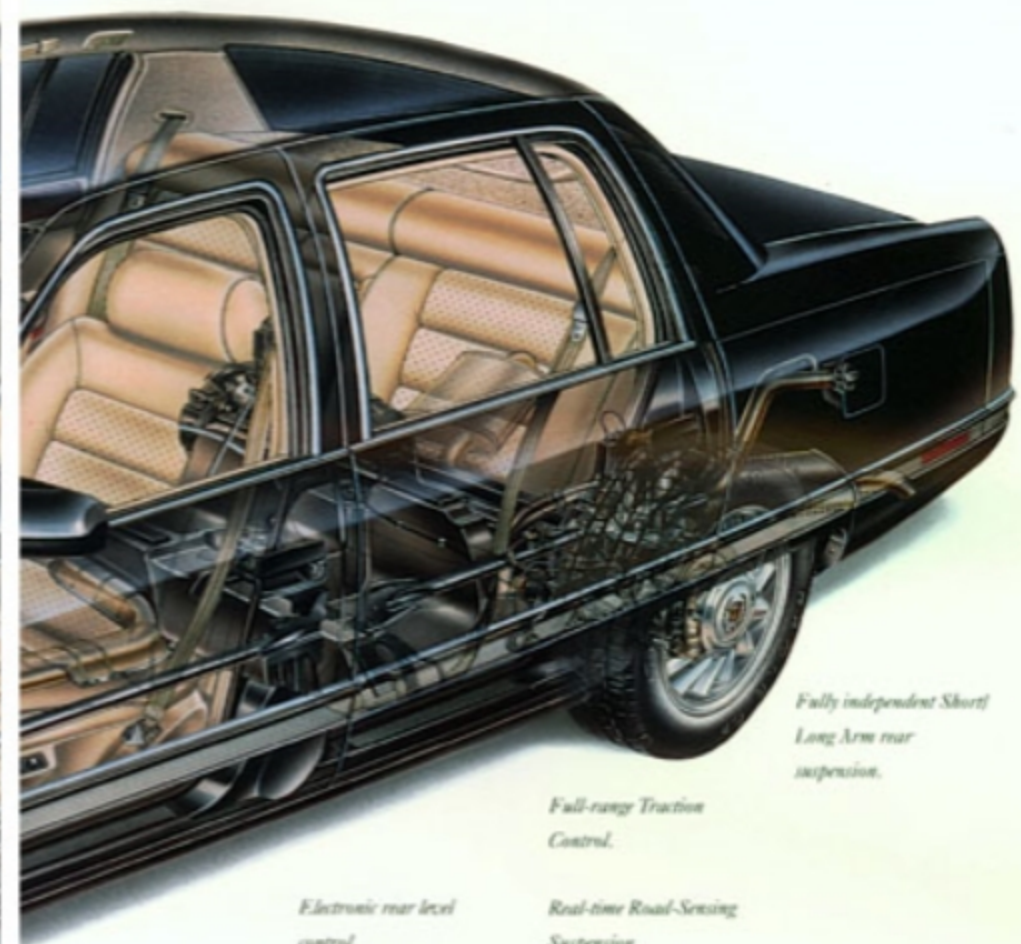
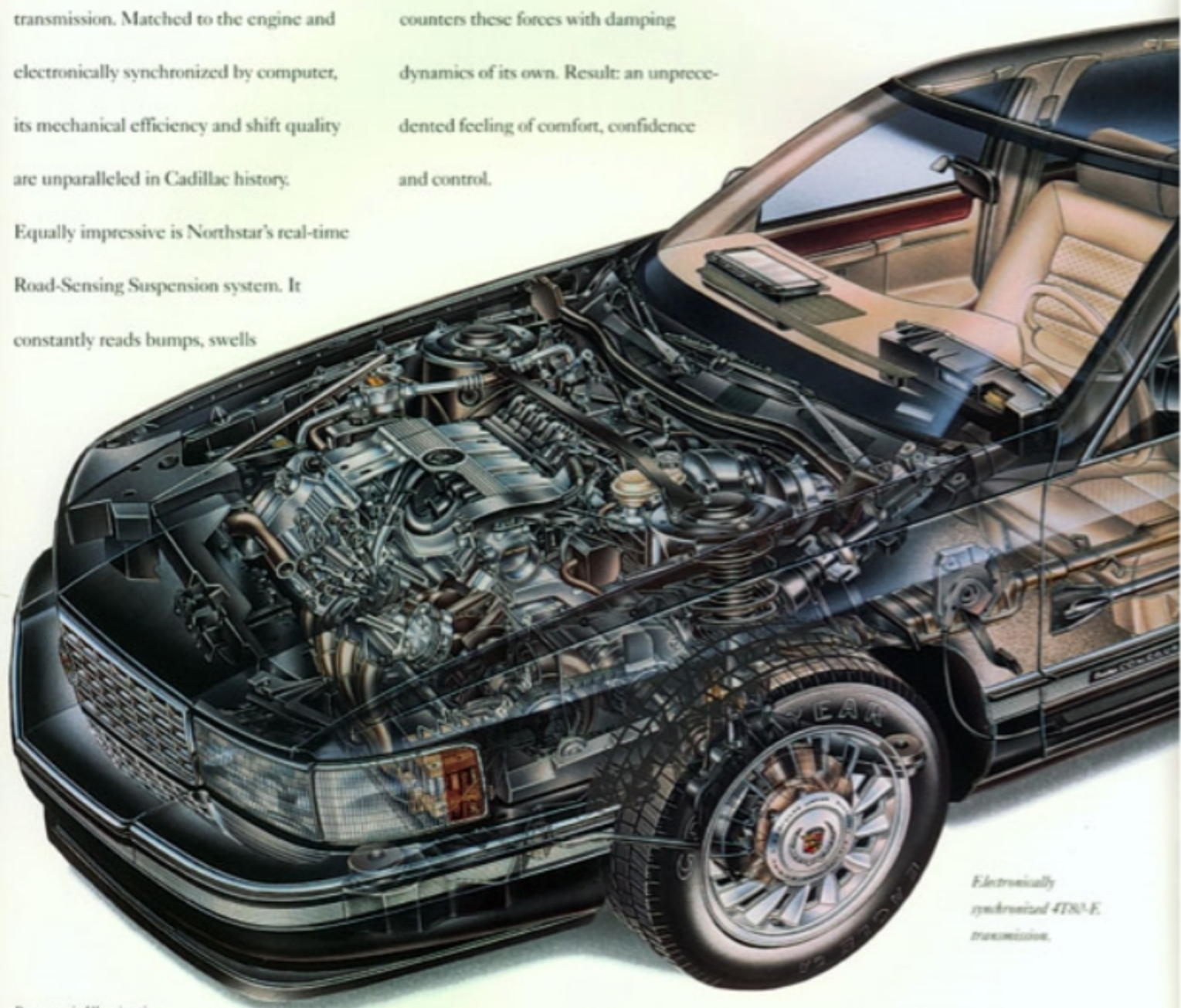
It's only a matter of seconds before a driver senses the extraordinary potential of the Northstar System.

The Northstar V8 generates more horsepower for its displacement than any other American luxury car V8 engine.



As its name indicates, the Northstar System extends far beyond a revolutionary V8. For example, one of the primary elements of Northstar is its electronic 4T80-E transmission. Matched to the engine and electronically synchronized by computer, its mechanical efficiency and shift quality are unparalleled in Cadillac history. Equally impressive is Northstar's real-time Road-Sensing Suspension system. It constantly reads bumps, swells

and contours of the road as well as suspension load at each wheel. All in a matter of milliseconds. With this "real-time" input at hand, the Northstar suspension system then counters these forces with damping dynamics of its own. Result: an unprecedented feeling of comfort, confidence and control.



Panoramic Illumination widens your view of the road, going well beyond federal regulations.

World-class tungsten-halogen headlamps.

Northstar 32-valve DOHC V8.

Equal-length drive axles.

Anti-lock four-wheel disc brakes.

Electronically synchronized 4T80-E transmission.

To enhance this sense even further, full-range Traction Control helps maintain a grip on most any road surface by reducing drive-wheel slippage to a minimum.

Sensors at front wheels detect slip at its onset, which is counteracted through the braking system, and by momentarily regulating the engine's output.

Speed-Sensitive Steering.

*Airbag System: Dual front air bags.**

**Always wear safety belts, even with air bags.*

Electronic rear level control.

Full-range Traction Control.

Real-time Road-Sensing Suspension.

Fully independent Short/Long Arm rear suspension.



The Northstar V8 travels 100,000 miles before its first scheduled tune-up - four times around the world.

32-Valve V8 • 4T80-E Transmission • 100,000 Miles to First Scheduled Tune-up



0-60 Under 8 Seconds • Dual Overhead Cam Design • Coolant Loss Protection

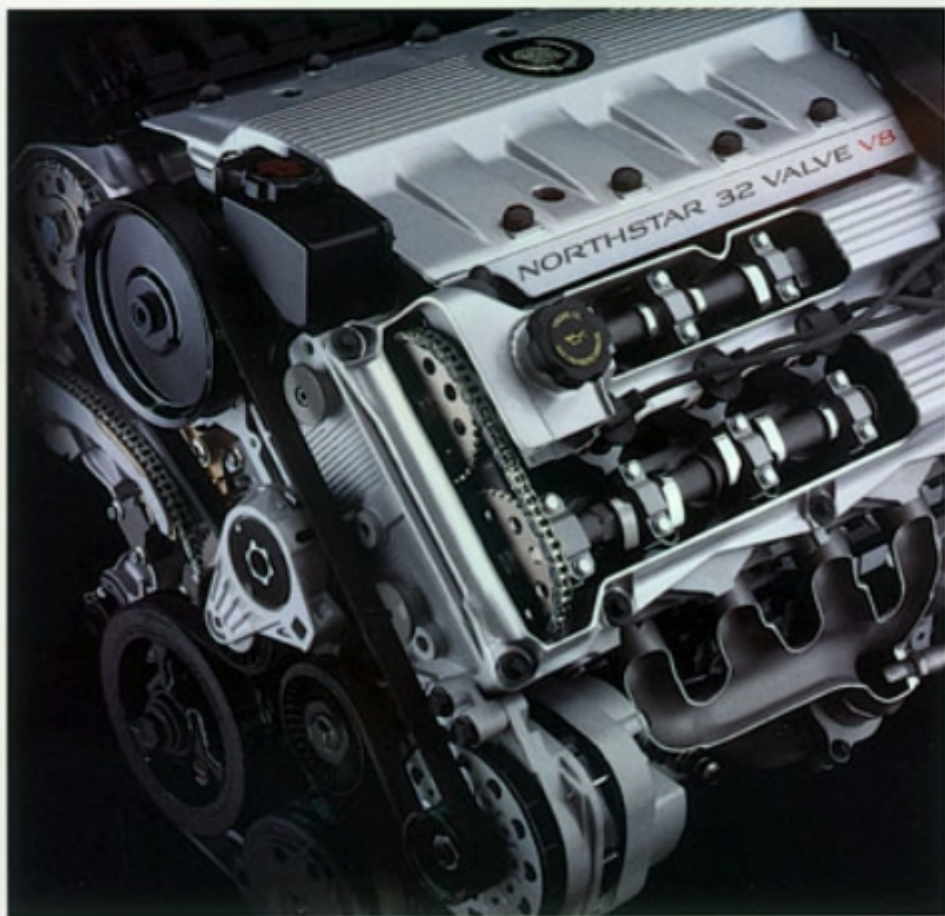


The catalyst of the Northstar System is a 32-valve V8 engine that creates a higher standard and banishes the word *compromise*.

The Northstar V8 has achieved the seemingly contradictory goals of exhilarating response and silken refinement. The Seville STS and Eldorado Touring Coupe, for example, sprint from 0-60 mph in just over 7 seconds, not stopping till they reach their top speed of 150 mph. Yet, the engine is so quiet at idle, it is equipped

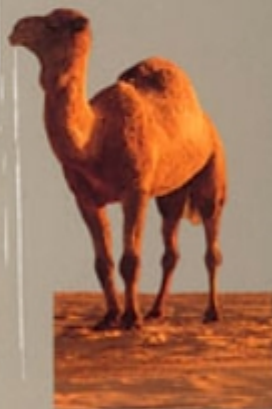
with an interlock switch to prevent drivers from inadvertently engaging the starter when the engine is already running.

Borrowed from Indy Car engineering, the 90-degree two-piece engine block creates the strength and solidity necessary for high-performance driving. But the rigidity and integrity of this design also suppresses noise and enhances smoothness, allowing the Northstar-powered Cadillacs to seamlessly thread their way through city traffic.



The DOHC 32-valve Northstar V8 in the Seville STS inspired Automobile Magazine to report, "power is rushed to the front wheels in seamless increments, small doses or large, as if your right foot's tendons were surgically fused to the throttle."

YOU could travel up to 50 miles – even in desert heat – without a single drop of engine coolant. Because the patented Northstar V8 is so adaptable, it is engineered to sense major coolant loss automatically. It then begins alternately firing and air-cooling its two banks of cylinders to prevent overheating.





At 60 mph, the real-time Road-Sensing Suspension reads the road in one-inch increments. Each wheel is then independently adjusted to enhance driver control.

The suspension and steering of the Northstar System keep the driver in communication with the road, creating a confidence level that your Cadillac will do what you expect in changing situations. The linchpin of the Northstar System's adaptive handling is the real-time Road-Sensing Suspension (RSS). It reads the contours of the road every millisecond by measuring wheel position and body motion. It then selects either a soft or firm

mode for each wheel independently in the span of 10-15 milliseconds.

The computer controlling RSS also manages the power rack-and-pinion Speed-



New aluminum lower control arm of the Short/Long Arm rear suspension reduces unsprung weight, further optimizing handling precision and refining ride motions.

Sensitive Steering. It delivers light effort at low speeds and progressively higher effort at increased speeds, while the Short/Long Arm (SLA) independent rear suspension maintains ideal rear-wheel geometry under virtually all driving conditions.

The real-time Road-Sensing Suspension helps make your ride more balanced, especially during acceleration, braking or spirited cornering.



Road-Sensing Suspension • Short/Long Arm Rear Design • Speed-Sensitive Steering



Full-range Traction Control • Real-time Road-Sensing Suspension • Dual front air bags



The active safety equipment includes a powerful Northstar V8 engine for ample performance to pass and merge safely. Four-wheel anti-lock disc brakes add confidence and control under hard braking conditions. Full-range Traction Control helps to prevent wheel spin and traction loss on acceleration. And a real-time Road-Sensing Suspension enhances peace of mind over unexpectedly rough roads, or when faced with extreme handling demands.

The structure of the internal safety cage

includes one-piece side door ring construction on both sides for added strength and security. "Crush zones" also help absorb impact energy and divert it away from the passenger compartment. In addition, you'll find automatic door locks standard on every front-drive Cadillac and rear-door child security locks on every Cadillac sedan.



Both driver and front passenger air bags* are standard equipment on every Cadillac model. Their level of protection is engineered to exceed federal safety standards.

Structural crush zones help absorb collision energy.

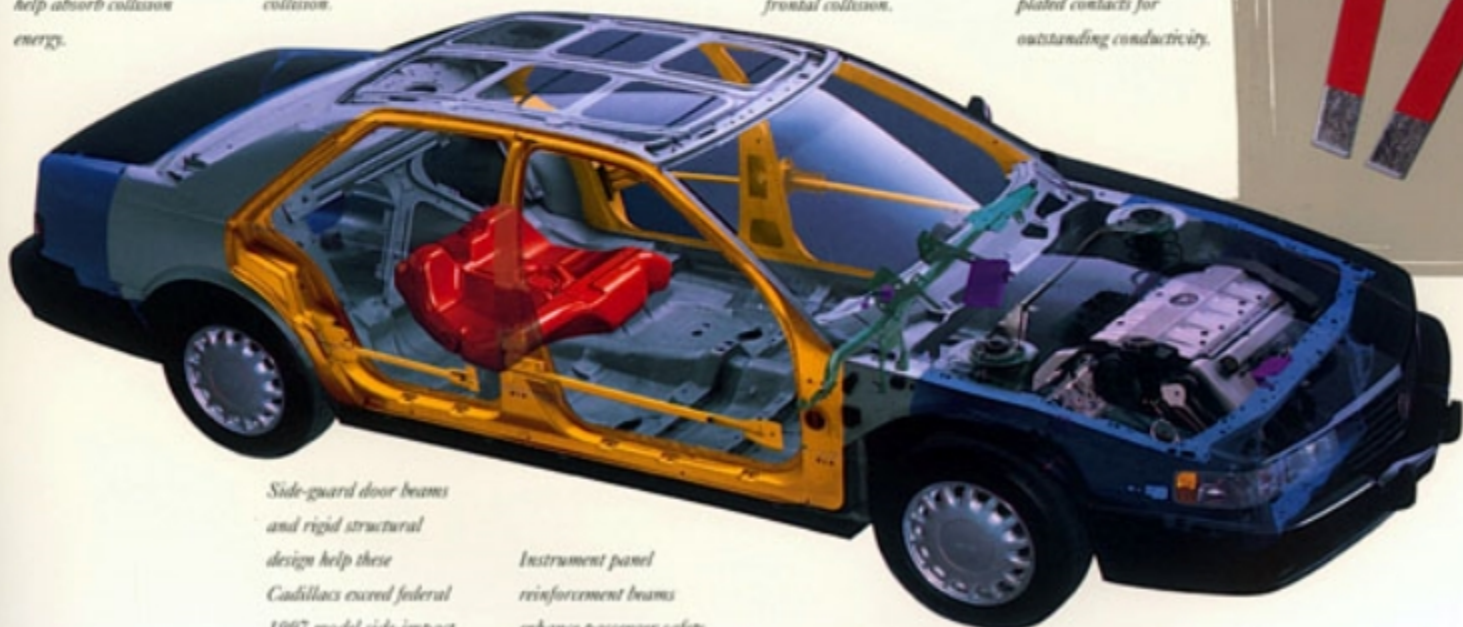
Fuel tank is located forward of the rear wheels and suspension for added security in a collision.

Specially designed steel safety cage helps to protect occupants.

Engine mounting system is designed to direct the motor downward and away from passenger compartment in a frontal collision.

Strategically placed air bag sensors have gold-plated contacts for outstanding conductivity.

Cadillacs have a certain magnetism. This is especially true regarding their full-range Traction Control system. Sensors at front wheels utilize a magnetic field to detect the slightest hint of traction-robbing slip, then instantly relay this information to the on-board computer. In milliseconds, engine torque is modulated in concert with the brakes to maintain smooth and predictable traction.



Side-guard door beams and rigid structural design help these Cadillacs exceed federal 1997 model side-impact standards today.

Instrument panel reinforcement beams enhance passenger safety cage integrity.

*Always wear safety belts, even with air bags.

Cadillac Owner Privileges. Cadillac creates a higher standard with its unmatched pledge to make you the most cared-for owner in the world.



Remote Keyless Entry, standard or available on every 1994 Cadillac, enhances your safety and convenience. Pressing a button lights the inside of your car, locks and unlocks the doors, or opens the trunk from up to 15 feet away.

Cadillac Roadside Service. The finest program of its kind, it places assistance just a toll-free phone call away 24 hours a day, 365 days a year – regardless of your model-year Cadillac.

Your call is answered by a Cadillac-trained advisor who, in many cases, can quickly help resolve your car's problem over the phone. If necessary, a Cadillac technician with a specially equipped vehicle, stocked with genuine GM parts, comes to your aid when you need it the most: nights, weekends and holidays. The driver will even take you to your home, a hotel or another local destination if more extensive service is required.

24-Hour Consumer Relations Hotline.

As a Cadillac owner, should you need to ask any questions or make a comment, the exclusive Cadillac Consumer Relations Center is staffed around the clock.

No-charge emergency road service.¹

Whether you have a flat tire, are locked out, need a battery jump start, or simply run out of fuel, you can receive assistance at no charge.



On-the-spot assistance from more participating dealers than any other roadside assistance program.

Trip-interruption protection.¹ You are reimbursed for hotel, food, even alternate transportation necessitated by a covered repair.

Trip routing service.

Cadillac provides personalized route information, travel log and road atlas.

Among the best warranty protection in the industry. The Cadillac Gold Key

Bumper to Bumper Warranty safeguards your investment for 4 years/50,000 miles (6 years/100,000 miles rust-through protection). There is no deductible.

Never without transportation. If your Cadillac requires same-day service, your dealer will furnish shuttle service. If your Cadillac requires overnight warranted repair, your dealer will provide you with a loaner car if one is available, or reimburse you for rental or transportation expense.²



Gas delivery at no charge³ should you run out.

A personal invitation. With the Cadillac Gold Key Delivery System, your sales representative will present you with a premium package of ownership materials and introduce you to key dealership personnel.

¹These services are available to all 1994 model owners at no charge for 4 years/50,000 miles. They are also available to owners of prior years' models; however, service fees may apply.

²Please ask your dealer for complete program details.

CADILLAC OWNER

Privileges

24-hour Cadillac Roadside Service

Toll-free assistance 24 hours a day, 365 days a year.

Trip-interruption protection

Reimburses you for lodging, meals and alternate transportation.

Emergency road service

Lock-out assistance, gas delivery, towing, jump-start and flat tire change.

Trip routing service

Custom road atlas and computerized travel log.

24-hour Consumer Relations Hotline

Your questions answered around the clock.

Gold Key Delivery System

*Thorough inspection of your new Cadillac.
Premium owner's information package.
Personal introduction to key dealer personnel.*

Courtesy transportation

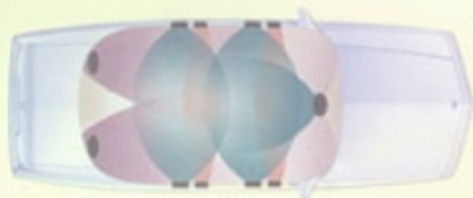
Free loaner car, rental car allowance or shuttle service.

Gold Key Bumper to Bumper Warranty

4-year/50,000-mile protection. 6-year/100,000-mile rust-through protection. No deductibles.



Available express-open
Astroroof (reduces head
room slightly).



The exclusive Active
Audio System, with 11
amplifiers and 11
strategically placed
speakers, reproduces
sound with amazing
clarity.



CD changer mounts in
the luggage compart-
ment. Holds 6 CDs.
Available by dealer
installation.



Standard Delco AM
AMAX₂ stereo/FM
stereo radio, Dolby_s
auto-reverse cassette
tape player, six
speakers. (Not on
DeVil Concoers)



Standard Delco Active
Audio System: AM
AMAX₂ stereo/FM
stereo radio, Dolby_s
cassette tape. Eleven
amplifiers, 11
speakers.



Available Delco/Bose
AM AMAX₂ stereo/FM
stereo radio, CD and
Dolby_s cassette tape
players; custom-
equalized for Seville,
Eldorado interiors.



Available Delco Active
Audio System: AM
AMAX₂ stereo/FM
stereo radio, CD,
Dolby_s cassette players.
Eleven amplifiers,
11 speakers. (Avail. on
DeVil Concoers)

The 295-horsepower Northstar System: Seville STS, Eldorado Touring Coupe

Engine Northstar 32-valve DOHC V8, 295 hp, with sequential port fuel injection for uncompromising response at all speeds.

Transmission Four-speed automatic, electronically synchronized for a precise, crisp shift quality.

Suspension Real-time Road-Sensing, electronically modulated for optimum handling under all speed and road surface conditions.

Brakes Anti-lock, four-wheel power disc, for all-weather confidence and fade resistance.

Traction Control Full-range, brakelengine modulated for optimum acceleration on a variety of surfaces.

Tires Goodyear Eagle GAs, Z-rated to 150 mph, with all-season design for broad-range performance capabilities.

The 270-horsepower Northstar System: Seville SLS, Eldorado, De Ville Concours

Engine Northstar 32-valve DOHC V8, 270 hp, with sequential port fuel injection for optimum low to mid-range speed response.

Transmission Four-speed automatic, electronically synchronized with viscous converter clutch for superlative shift smoothness.

Suspension Real-time Road-Sensing, electronically modulated for outstanding ride isolation and precise control.

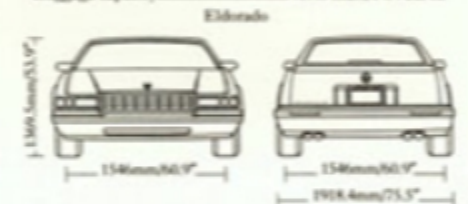
Brakes Anti-lock, four-wheel power disc, for all-weather confidence and fade resistance.

Traction Control Full-range, brakelengine modulated for optimum acceleration on a variety of surfaces.

Tires Michelin all-weather touring tires, S-rated to 112 mph with specialized construction for performance, comfort and quiet.



Drag coefficient: 0.33
 Head room front...966mm/38.0" rear...972mm/38.3"
 Leg room front...1092mm/43.0" rear...993mm/39.1"
 Hip room front...1398mm/55.0" rear...1464mm/57.6"
 Shoulder room front...1496mm/58.9" rear...1460mm/57.5"
 Seating capacity front/rear...2/3
 Curb weight
 Seville SLS...1738.0 kg/3831.6 lbs.
 Seville STS...1765.9 kg/3893.1 lbs.
 Luggage capacity...407.8 liters/14.4 cu. ft.



Drag coefficient: 0.33
 Head room front...951mm/37.4" rear...972mm/38.3"
 Leg room front...1081mm/42.6" rear...916mm/36.1"
 Hip room front...1464mm/57.6" rear...1436mm/55.7"
 Shoulder room front...1478mm/58.2" rear...1463mm/57.6"
 Seating capacity front/rear...2/3
 Curb weight
 Eldorado...1711.6 kg/3773.4 lbs.
 Eldorado Touring Coupe...1732.0 kg/3818.4 lbs.
 Luggage capacity...433.3 liters/15.3 cu. ft.



Drag coefficient: 0.35
 Head room front...979mm/38.5" rear...975mm/38.4"
 Leg room front...1083mm/42.6" rear...1101mm/43.3"
 Hip room front...1426mm/56.1" rear...1420mm/55.9"
 Shoulder room front...1553mm/61.1" rear...1556mm/61.3"
 Seating capacity front/rear...3/3
 Curb weight...1813.6 kg/3998.2 lbs.
 Luggage capacity...566.3 liters/20 cu. ft.



Standard 16"x7"
squeeze-cast aluminum
wheel - Seville STS.



Available 16"x7"
chromed squeeze-cast
aluminum wheel -
Seville STS.



Standard 16"x7"
squeeze-cast aluminum
wheel - Seville SLS.



Available 16"x7"
chromed squeeze-cast
aluminum wheel -
Seville SLS.



Standard 16"x7"
squeeze-cast aluminum
wheel - Eldorado
Touring Coupe - Eldorado
with V4C option.



Available 16"x7"
chromed squeeze-cast
aluminum wheel -
Eldorado Touring Coupe.



Standard 16"x7"
squeeze-cast aluminum
wheel - Eldorado.



New available 16"x7"
chromed squeeze-cast
aluminum wheel
- Eldorado.



Standard 16"x7"
squeeze-cast aluminum
wheel with multicolored
wreath and crest center
cap - De Ville Concours.



Available chromed
squeeze-cast aluminum
wheel - De Ville Concours.

1994 NORTHSTAR SPECIFICATIONS

• Feature standard on every 1994 Cadillac

INTERIOR	DeVILLE CONCOURS			
	ELDORADO TOURING COUPE SEVILLE STS	ELDORADO SEVILLE SLS	ELDORADO	ELDORADO
ARMRESTS AND STORAGE				
• Front-seat center armrest; dual cupholder	x	x	x	x
Full console: storage, floor shift	x	o'	x	o'
Mini console: storage	x	x		
• Rear-seat center armrest	x	x	x	x
CONVENIENCES/CONTROLS				
Automatic door locks (may be dealer-modified to keep doors locked in "Park")	x	x	x	x
• Automatic parking brake release	x	x	x	x
• Cruise control	x	x	x	x
• Electronic climate control	x	x	x	x
Front door leather map pockets				x
• Power door locks - with new anti-lockout; driver door won't lock with engine off and key in ignition	x	x	x	x
• Power windows with driver express-down	x	x	x	x
Remote fuel filler door release	x	x	x	x
• Retained accessory power	x	x	x	x
• Solar Ray tinted glass	x	x	x	x
• Steering, Tilt-Wheel adjustable, leather-trimmed rim, four-spoke design	x	x	x	x
Trumpet horn - ACDF notes				x
Unique slide-down front sunshades				x
• Windshield wiper, controlled-cycle	x	x	x	x
DEFOGGERS				
• Defog mode (windshield and floor)	x	x	x	x
• Electric rear window	x	x	x	x
• Front side windows	x	x	x	x
Heated windshield	o	o	o	o
INSTRUMENT CLUSTER				
Analog	x	o'	x	o'
Digital	x	x	x	x
Driver information center	x	x	x	x
• Oil life and low fluid level messages	x	x	x	x
LIGHTING				
• Flash-to-pass	x	x	x	x
Floodlit front-door armrest switches	x	x	x	x
• Illuminated entry system	x	x	x	x

	DeVILLE CONCOURS			
	ELDORADO TOURING COUPE SEVILLE STS	ELDORADO SEVILLE SLS	ELDORADO	ELDORADO
• Overhead map/reading lamps	x	x	x	x
• Twilight Sentinel	x	x	x	x
Underhood lamp	x	x	x	x
LUGGAGE COMPARTMENT				
• Cargo convenience net	x	x	x	x
• Carpeted, with mat	x	x	x	x
• Compact spare tire	x	x	x	x
Hidden storage	x	x	x	x
Power deck lid pull-down	x	x	x	x
• Power deck lid release	x	x	x	x
• Spare tire cover	x	x	x	x
MIRRORS				
Electrochromic automatic dimming inside rearview mirror	x	x	x	x
Illuminated driver and passenger visor vanity mirrors, with dimmers	x	x	x	x
Illuminated rear-seat overhead vanity mirrors				x
SELECTED SAFETY FEATURES				
Airbank System				x
• Air bags - driver/front passenger Supplemental Inflatable Restraint Systems	x	x	x	x
• All passenger safety belts accommodate child seats	x	x	x	x
• Diagnostic Energy Reserve Module backs up car battery for air bags	x	x	x	x
• Intentional set front shoulder belt; allows up to one inch of slack for comfort	x	x	x	x
• Knee bolsters, driver and front passenger	x	x	x	x
• Manual center rear-seat lap safety belt	x	x	x	x
• Manual outboard front/rear lap/shoulder safety belts	x	x	x	x
Manual rear-door child security locks	x	x	x	x
Power rear window child security locks, controlled by the driver				x
• Safety belts go through rear seats (added comfort)	x	x	x	x
• Steel safety cage; exceeds 1997 model dynamic side-impact standards	x	x	x	x
SEATING				
Heated front seat cushions and seatbacks	o	o'	o	o'
Memory driver seat with two settings plus exit				x

	DeVILLE CONCOURS			
	ELDORADO TOURING COUPE SEVILLE STS	ELDORADO SEVILLE SLS	ELDORADO	ELDORADO
Nuance gathered-leather seating areas			x	
Nuance leather seating areas		o	o	
Nuance perforated-leather seating areas		x	x	
Orthopedically designed front seats with manual headrests	x	x	x	x
Power four-way front seat lumbar controls	x	o'	x	o'
• Power six-way front seat adjusters	x	x	x	x
Power two-way front seat recliners	x	x	x	x
• Seatback pockets	x	x	x	x
Suspension Seating	x	x	x	x
Umbrella storage (bottom front of driver seat)				x
SECURITY				
Audible theft-deterrent system	x	o	x	o
• PASS Key II theft-deterrent system	x	x	x	x
Remote keyless entry with central door unlocking	x	x	x	x
WOOD				
Zebrano real wood interior trim	x	x	x	x
EXTERIOR				
APPEARANCE				
32V Northstar badge	x	x	x	x
Accent striping		o	o	o
• Body-color flush lift bar door handles	x	x	x	x
• Clearcoat paint finish for a rich luster	x	x	x	x
• Front license plate mounting - no charge	o	o	o	o
Full lowering rear door glass				x
• Galvanized steel on every body panel needing protection	x	x	x	x
Grille-mounted wreath and crest	x	x	o'	x
• Power telescoping antenna, rear-mounted	x	x	x	x
Sport Appearance Package				o'
Standup wreath and crest hood ornament	x	x		
LIGHTING				
• Center high-mounted stop lamp	x	x	x	x

	DeVILLE CONCOURS			
	ELDORADO TOURING COUPE SEVILLE STS	ELDORADO SEVILLE SLS	ELDORADO	ELDORADO
• Composite tungsten-halogen headlamps - Panoramic Illumination	x	x	x	x
Fog lamps in front fascia	x	x		
• Front cornering lamps	x	x	x	x
MIRRORS (left-/right-hand)				
• Body color	x	x	x	x
Electrochromic (driver)	x	o	x	o
• Heated	x	x	x	x
• Power	x	x	x	x
POWERTRAIN/CHASSIS				
• 140-ampere alternator	x	x	x	x
• Brake/transmission shift interlock (apply brake pedal to shift out of "Park")	x	x	x	x
• Computer diagnostics	x	x	x	x
• Delco Freedom maintenance-free battery	x	x	x	x
Dual mufflers, individual outlets				x
Dual mufflers, quad outlets	x	x	x	x
• Dual platinum-tipped spark plugs for 100,000-mile service intervals	x	x	x	x
Equal-length drive axles	x	x	x	x
Front-wheel drive	x	x	x	x
Hydromount engine isolation mounts	x	x	x	x
Integral body-frame	x	x	x	x
• Powertrain Control Module	x	x	x	x
• Stainless steel exhaust system	x	x	x	x

Part of available UVV Sport Appearance equipment.
Part of available VAC Sport Appearance Package.
Not included with available Aeromag.
*Requires available leather seating areas.

THE NORTHSTAR SYSTEM POWERTRAINS

Engines

Seville STS, Eldorado Touring Coupe..... Northstar 4.6 liter high-output V8
 Power.....295 bhp @ 6000 rpm
 Torque.....290 lbs-ft @ 4400 rpm

Seville SLS, Eldorado, DeVille Concours..... Northstar 4.6 liter V8
 Power.....270 bhp @ 5600 rpm
 Torque.....300 lbs-ft @ 4000 rpm

Recommended fuel (all).....Premium unleaded
 Fuel tank capacity (all).....20 gallons

Performance

Seville STS, Seville SLS, Eldorado Touring Coupe, Eldorado

0-60.....7.5 seconds
 EPA estimated mileage.....16/25 city/highway
 Estimated highway range*.....500 miles

DeVille Concours

0-60.....8.2 seconds
 EPA estimated mileage.....16/25 city/highway
 Estimated highway range*.....500 miles

Transmissions

Seville STS, Eldorado Touring Coupe..... 4T80-E four-speed automatic with electronic shift control, overdrive; pulse-width-modulated torque converter clutch

Seville SLS, Eldorado, DeVille Concours..... 4T80-E four-speed automatic with electronic shift control, overdrive and Cadillac-exclusive viscous converter clutch

Final drive ratios

Seville STS, Eldorado Touring Coupe.....High-performance 3.71:1

Seville SLS, Eldorado, DeVille Concours.....Performance 3.11:1

Suspensions

(all).....Fully independent with coil springs, Short/Long Arm rear; rear electronic level control

Seville STS, Eldorado Touring Coupe..... Real-time Road-Sensing; electronically adapts to road surfaces, lined for Eldorado Touring Coupe, STS characteristics

Seville SLS, Eldorado, DeVille Concours..... Real-time Road-Sensing; electronically adapts to road surfaces

Steering (all).....Electronically controlled Speed-Sensitive, power-assisted rack and pinion; 15.6:1 ratio

Brakes (all).....Four-channel Bosch ABSII, anti-lock; power four-wheel disc

Traction Control (all).....ASRII, full-range engine power management

Wheels (all).....16"x7" squeeze-cast aluminum

Tires

Seville STS, Eldorado Touring Coupe.....Goodyear Eagle GA P225/60ZR16 Z-rated all-seasons M+S blackwall radials

Seville SLS, Eldorado.....Michelin XW4 P225/60R16 all-seasons M+S blackwall radials

DeVille Concours.....Goodyear Eagle GA P225/60R16 all-seasons M+S blackwall radials

*Estimated highway range: multiply EPA highway estimate by fuel tank capacity. Specifications as of 8/93.

OCCUPANT PROTECTION
 Manual lap/shoulder safety belts, driver and right-front passenger, plus driver and front passenger Supplemental Inflatable Restraint Systems
 Manual lap safety belt, center rear-seat position; center front, DeVille Concours
 Manual lap/shoulder safety belts, outboard rear-seat positions
 Energy-absorbing steering column
 Energy-absorbing instrument panel
 Interlocking door latches
 Folding front seatback locks, inertia type, two-door models
 Safety armrests
 Breakaway inside rearview mirror
 Security door locks and door retention components
 Laminated windshield glass, urethane bonded
 Head restraints, driver and right-front passenger (adjustable, all Cadillac); rear seats (integral) Seville STS, Eldorado Touring Coupe
 Side-guard door beams
 Passenger-guard inside door lock handles
 Front and rear crush zones
 Tempered safety glass, side and rear windows
 Dual sun visors
 Pressure lock radiator cap
 Automatic door locking system standard
 Manual rear-door child security locks, Seville SLS, Seville STS, DeVille Concours

ACCIDENT AVOIDANCE
 Side marker lamps and reflectors
 Parking lamps
 Four-way hazard warning flashers
 Back-up lamps
 Directional signal control
 Windshield defrosters, washer and multi-speed wipers
 Inside day/night rearview mirror
 Outside left and right rearview mirrors
 Brake system with dual master cylinder plus warning light
 Center high-mounted stop lamp
 Starter safety switch
 Dual-action hood latch
 Low-glare finish-inside windshield moldings, wiper arms and blades
 Illuminated heater and defroster controls
 Tires with built-in tread wear indicators
 Safety mud wheel rims
 Audible disc brake lining wear indicators
 Anti-lock brakes
 Brake/transmission shift interlock
 Pressure-relief fuel cap
 Door warning reflectors; Eldorado Touring Coupe, Seville STS, DeVille Concours

THEFT DETERRENCE
 Visible vehicle identification number
 Laser-etched VIN plate
 Marked body parts (where applicable)
 Theft-deterrent steering column lock
 Theft-deterrent key system (separate ignition key)
 PASS Key II personal security system
 Remote inside hood release

The GM Gold Card.

The world's only credit card that lets you earn up to \$1,000 a year toward the purchase of any new Cadillac. Plus all the benefits of a GM Gold MasterCard®.

SMARTLEASE

by GMAC

All the benefits of leasing including capital conservation. Terms arranged in the showroom to suit you. Choose your monthly payment date.



**Protection
Plan**

The only service contract for new Cadillacs backed by General Motors. Protects beyond the 4-year/50,000-mile Gold Key Bumper to Bumper warranty.



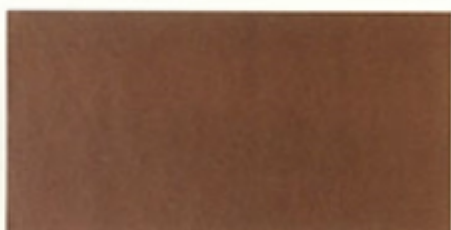
Light Gray - leather



Neutral - leather



Black - leather



Beechwood - leather



Dark Blue - leather



Dark Cherry - leather



Mocha - leather



Neutral - Bistro cloth

1994 NORTHSTAR EXTERIOR COLORS

SEVILLE STS SEVILLE SLS



● 13 Platinum†



■ 20 Light Montana Blue



● 21 Medium Montana Blue†



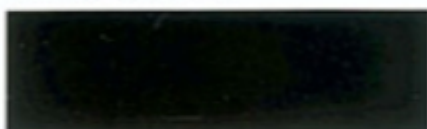
● 22 Dark Montana Blue†



● 33 Frost Beige†



■ 40 Cotillion White



● 41 Sable Black†



● 60 Mocha†

ELDORADO TOURING COUPE ELDORADO DEVILLE CONCOURS



● 72 Carmine Red†



● 77 Dark Cherry†



● 87 Academy Gray†



● 91 Polo Green†



● 92 Calypso Green†



● 93 White Diamond† □

KEY

● = All Northstar Cadillacs

■ = DeVille Concours,
Seville SLS, Eldorado

□ = Available at extra charge

† Limited colors available on Eldorado Touring Coupe
and Seville STS.



CADILLAC.
CREATING A HIGHER STANDARD