

2012 Outback



Love. It's what makes a Subaru, a Subaru.

 **SUBARU**
Confidence in Motion

Everything ventured. **Everything gained.**

The 2012 **Subaru Outback**

Not all who wander are lost. Outback has what you need to explore whenever and wherever with confidence. Geared with the versatility you seek to take on any adventure, Outback is ready. And with Symmetrical All-Wheel Drive and a rugged suspension, you get car-like handling with SUV capabilities. So grab some gear, a few fellow adventurers and go make some stories.



Outback 3.6R Limited in Ice Silver Metallic.



Efficient

Getting up to 29 mpg highway¹ and over 500 miles of range (highway) with the available Lineartronic[®] CVT, Outback is made to help you do more with less.

¹ EPA highway estimate. Actual mileage may vary.



Strong

Between its structural reinforcements, rugged suspension and the choice of two powerful engines, you have an Outback that will run smoothly when you work it hard.



Versatile

Smartly equipped with an array of compartments, pockets, holders, and space, Outback will make sure that all of your gear is just as comfortable as you are.



Protective

Outback earns its reputation for safety, thanks to intelligent active and all-around-you passive safety systems making it—in a worst-case scenario—one of your best possible bets.



Go where **stories are made.**

“Perhaps one of the most versatile vehicles on the road, the Outback is a Swiss Army knife on wheels; there is a blade or other useful utensil ready to handle whatever task you throw its way.”

– MSN Autos

Up a road. Down a trail.
Always on the move.





Capable, comfortable and **connected.**



Make room for **more doing.**

The spacious cabin and clever designs found on every Outback make getting in, getting out and getting all of your gear easier for you and your passengers. Generous legroom in the back, plenty of hip room in the front and spacious headroom all around make everyone comfortable. Yet with over 34 cubic feet of cargo volume behind the 2nd-row seats, there's still room for plenty of stuff. Fold down the 65/35 split seats and you can boost your cargo capacity to more than 71 cubic feet, when big plans call for big things.





Go bigger. Climb steeper. **Travel farther.**



Ready, willing and oh so able.



Symmetrical AWD

With an almost perfectly symmetrical layout, our unique all-wheel drive system offers better balance for stability and a more efficient flow of power to all four wheels for greater grip and control.



Exceptional Control

The balance of the SUBARU BOXER® engine and the grip of Subaru AWD help give you the power and responsiveness you need on those twisty roads and unpredictable conditions. This poise is combined with VDC electronic stability control, which can intervene to help you stay in control.



Versatility

Outback is filled with handy designs like the multifunction center console, and the unique retractable crossbars of the roof rack system that help keep your stuff neatly packed and under control. While a spacious cargo area and a 65/35 split-folding rear seatback make loading, hauling and accessing cargo easy.



Suspension

With its rugged 4-wheel independent suspension and up to 8.7 inches of ground clearance, your Outback has the capability to take you to destinations ordinary cars can't. Yet it drives with a smooth ride and responsive handling no SUV can match.



Passenger Protection

Our body structure design, the Ring-shaped Reinforcement Frame, is designed to absorb and direct impact energy away from the passenger cabin, while an array of airbags—all standard—further help prevent injury.¹



Rewarding Technology

Available features like dual-zone climate control help keep you comfortable, while a USB for your iPod®, HD Radio™, XM® Satellite Radio² and Bluetooth® hands-free connectivity keep you connected and entertained.

¹ Always wear seatbelts. Children should be properly restrained in the rear seat.

² 3-month trial subscription included when a dealer- or port-installed accessory or a 4-month trial subscription included as part of the Harman Kardon premium audio system. Activation and required monthly subscription sold separately. See your dealer.

2.5i



- 170-hp 2.5-liter 4-cylinder SUBARU BOXER® engine
- Subaru Symmetrical All-Wheel Drive
- 29 mpg¹
- 6-speed manual transmission or optional Lineartronic® CVT (Continuously Variable Transmission)
- 16-inch steel wheels with covers
- Roof rails with integrated and retractable cross bars
- Cloth upholstery
- Silver metallic interior trim
- 6-way manually adjustable driver's seat. 4-way manually adjustable front-passenger's seat.
- 4-speaker single-CD audio system
- Optional Alloy Wheel Package

2.5i Premium



- 170-hp 2.5-liter 4-cylinder SUBARU BOXER engine
- Subaru Symmetrical All-Wheel Drive
- 29 mpg¹
- 6-speed manual transmission or optional Lineartronic® CVT (Continuously Variable Transmission)
- Roof rails with integrated and retractable cross bars
- Cloth upholstery
- Silver metallic interior trim
- ▲ **17-inch aluminum-alloy wheels**
- ▲ **Fog lights**
- ▲ **Leather-wrapped 3-spoke steering wheel**
- ▲ **10-way power adjustable driver's seat. 4-way manually adjustable front-passenger's seat.**
- ▲ **6-speaker single-CD audio system with Bluetooth® connectivity and USB port/ iPod® control**

2.5i Limited



- 170-hp 2.5-liter 4-cylinder SUBARU BOXER engine
- Subaru Symmetrical All-Wheel Drive
- 29 mpg¹
- Lineartronic® CVT (Continuously Variable Transmission)
- 17-inch aluminum-alloy wheels
- Fog lights
- Roof rails with integrated and retractable cross bars
- Leather-wrapped 3-spoke steering wheel
- 10-way power adjustable driver's seat. 4-way power adjustable front-passenger's seat.
- ▲ **Leather-trimmed upholstery**
- ▲ **Dual-zone automatic climate control system**
- ▲ **Harman Kardon single-CD audio system with Bluetooth® connectivity and USB port/ iPod® control**
- ▲ **Woodgrain-patterned accent interior trim**
- ▲ **All-Weather Package**

3.6R



- 256-hp 3.6-liter 6-cylinder SUBARU BOXER engine
- Subaru Symmetrical All-Wheel Drive
- 25 mpg²
- 5-speed automatic transmission
- 17-inch aluminum-alloy wheels
- Roof rails with integrated and retractable cross bars
- Fog lights
- Cloth upholstery
- Silver metallic interior trim
- 6-way manually adjustable driver's seat. 4-way manually adjustable front-passenger's seat.
- 4-speaker single-CD audio system

3.6R Premium



- 256-hp 3.6-liter 6-cylinder SUBARU BOXER engine
- Subaru Symmetrical All-Wheel Drive
- 25 mpg²
- 5-speed automatic transmission
- 17-inch aluminum-alloy wheels
- Fog lights
- Roof rails with integrated and retractable cross bars
- Cloth upholstery
- Silver metallic interior trim
- ▲ **Leather-wrapped 3-spoke steering wheel**
- ▲ **10-way power adjustable driver's seat. 4-way manually adjustable front-passenger's seat.**
- ▲ **6-speaker single-CD audio system with Bluetooth® connectivity and USB port/ iPod® control**
- ▲ **All-Weather Package**

3.6R Limited



- 256-hp 3.6-liter 6-cylinder SUBARU BOXER engine
- Subaru Symmetrical All-Wheel Drive
- 25 mpg²
- 5-speed automatic transmission
- 17-inch aluminum-alloy wheels
- Fog lights
- Roof rails with integrated and retractable cross bars
- All-Weather Package
- Leather-wrapped 3-spoke steering wheel
- ▲ **Leather-trimmed upholstery**
- ▲ **10-way power adjustable driver's seat. 4-way power adjustable front-passenger's seat.**
- ▲ **Dual-zone automatic climate control system**
- ▲ **Harman Kardon single-CD audio system with Bluetooth® connectivity and USB port/ iPod® control**
- ▲ **Woodgrain-patterned accent interior trim**

▲ Additions or differences from preceding trim level at left.
¹ With Lineartronic® CVT. EPA highway estimate. Actual mileage may vary.
² EPA highway estimate. Actual mileage may vary.

ENGINE AND DRIVETRAIN

	2.5i	3.6R
Engine	2.5-liter SOHC aluminum-alloy 16-valve horizontally opposed 4-cylinder SUBARU BOXER® engine with i-Active Valve Lift System.	3.6-liter DOHC aluminum-alloy 24-valve 6-cylinder horizontally opposed SUBARU BOXER engine with Dual Active Valve Control System.
Power	170 hp @ 5,600 rpm	256 hp @ 6,600 rpm
Torque	170 lb-ft @ 4,000 rpm	247 lb-ft @ 4,400 rpm
Manual transmission	Fully synchronized 6-speed manual 2.5i and 2.5i Premium: Standard 2.5i Limited: Not available	Not available
Automatic transmission	Lineartronic® CVT (Continuously Variable Transmission) with 6-speed manual mode and paddle shifters. 2.5i and 2.5i Premium: Optional 2.5i Limited: Standard	Standard 5-speed automatic with manual mode, paddle shifters and downshift rev-matching control.
CA Emissions	SULEV2 (PZEV) ¹ and LEV2	LEV2/ULEV2

TRACTION AND STABILITY

Symmetrical All-Wheel Drive	Standard	Standard
Vehicle Dynamics Control (VDC)	VDC electronic stability control utilizes sensors which constantly monitor wheel speeds, steering angle, brake pressure, vehicle yaw rate and lateral g-forces. If VDC detects a difference between the driver's intended path and the one the vehicle is actually taking, VDC applies braking power and/or reduces engine torque to help correct vehicle path.	
Traction Control System (TCS)	VDC also incorporates an all-wheel, all-speed traction control system which senses a loss of traction and applies braking force to the slipping wheel or wheels as necessary to maintain vehicle motion.	

FUEL

Fuel economy (city/highway/combined) ²	Manual: 19/27/22 mpg CVT: 22/29/24 mpg	18/25/20 mpg
Fuel requirement	Unleaded gasoline (87 octane)	Unleaded gasoline (87 octane)
Fuel capacity	18.5 gallons	18.5 gallons

CHASSIS

Steering	Power-assisted rack-and-pinion. Turning circle: 36.8 feet	
Suspension	4-wheel independent raised suspension. Front: MacPherson strut type. Rear: Double-wishbone. Front and rear stabilizer bars.	
Brakes	4-wheel disc (2.5i models: ventilated front. 3.6R models: ventilated front and rear). 4-channel, 4-sensor ABS with Electronic Brake-force Distribution (EBD).	
Brake discs (front/rear)	11.6 inches/11.3 inches	12.4 inches/11.4 inches
Brake Assist	When emergency braking is detected by how quickly the brake pedal is pressed, maximum brake pressure is immediately applied.	

WHEELS AND TIRES

Wheels	2.5i: 16 x 6.5-inch steel with covers 2.5i Premium, 2.5i Limited and Alloy Wheel Package: 17 x 7.0-inch, 6-spoke aluminum-alloy	17 x 7.0-inch, 6-spoke aluminum-alloy
Tires	2.5i: 215/70 R16 99S all-season 2.5i Premium, 2.5i Limited and Alloy Wheel Package: 225/60 R17 98T all-season	225/60 R17 98T all-season

EXTERIOR AND INTERIOR DIMENSIONS

Length/Width/Height	188.2 inches/71.7 inches/66.1 inches (with roof rails and cross bars in position)	
Wheelbase	107.9 inches	
Track (front/rear)	61.0 inches/61.0 inches	
Headroom (front/rear)	40.8 inches/39.3 inches (with available moonroof: 38.7 inches/39.3 inches)	
Legroom (front/rear)	43.0 inches/37.8 inches	
Shoulder room (front/rear)	56.3 inches/56.1 inches	
Passenger volume	105.4 cubic feet (with available moonroof: 102.4 cubic feet)	
Cargo volume	34.3 cubic feet	
Maximum cargo volume	71.3 cubic feet with rear seatback lowered	
Base curb weight (manual/automatic)	2.5i: 3,389 lbs/3,498 lbs 2.5i Premium: 3,402 lbs/3,510 lbs 2.5i Limited: N/A/3,538 lbs	3.6R: N/A/3,597 lbs 3.6R Premium: N/A/3,609 lbs 3.6R Limited: N/A/3,631 lbs
Ground clearance (at base curb weight)	8.7 inches	8.7 inches
Maximum towing capacity	2,700 lbs	3,000 lbs

Warranties

New Car Limited Warranty	3 years or 36,000 miles, whichever comes first.
Powertrain Limited Warranty	5 years or 60,000 miles, whichever comes first.
Wear Item Limited Warranty	3 years or 36,000 miles, whichever comes first. Repairs to the following items will also be covered under Wear Item Limited Warranty: • Brake Pads • Wiper Blades • Clutch Linings • Transmitter Batteries
Rust Perforation Limited Warranty	5 years, unlimited mileage.

EXTERIOR	2.5i	2.5i Premium	2.5i Limited	3.6R	3.6R Premium	3.6R Limited
Projector-beam low-beam (with Auto-on) and multireflector high-beam headlights	●	●	●	●	●	●
Fog lights	○ ³	●	●	●	●	●
Front underguard	□	□	●	□	□	●
Black folding side mirrors	●	-	-	-	-	-
Body-color folding side mirrors	-	●	●	●	●	●
Windshield wiper de-icer and heated side mirrors (All-Weather Package)	○ ³	○	●	-	●	●
Roof rails with integrated and retractable cross bars (150 lbs maximum capacity)	●	●	●	●	●	●

SEATING AND TRIM

6-way manually adjustable driver's seat. 4-way manually adjustable front-passenger's seat.	●	-	-	●	-	-
10-way power adjustable driver's seat with power adjustable lumbar support. 4-way manually adjustable front-passenger's seat.	-	●	-	-	●	-
10-way power adjustable driver's seat with power adjustable lumbar support. 4-way power adjustable front-passenger's seat.	-	-	●	-	-	●
Heated front seats (All-Weather Package)	○ ³	○	●	-	●	●
Reclining rear seats	●	●	●	●	●	●
65/35-split flat-folding rear seatback	●	●	●	●	●	●
Cloth upholstery	●	●	-	●	●	-
Leather-trimmed upholstery	-	-	●	-	-	●
Silver metallic trim on doors and console	●	●	-	●	●	-
Woodgrain-patterned accent trim on doors and console	-	-	●	-	-	●

CONVENIENCE FEATURES

Electronic parking brake with hill-holder function	●	●	●	●	●	●
Driver's auto up/down power window	-	●	●	●	●	●
Electronic cruise control	●	●	●	●	●	●
3-spoke steering wheel with audio system and cruise control buttons	●	-	-	●	-	-
Leather-wrapped 3-spoke steering wheel with audio system, cruise control, Bluetooth® and (if equipped) navigation system voice-command buttons	-	●	●	-	●	●
Manually adjustable tilt/telescoping steering column	●	●	●	●	●	●
Automatic transmission or Lineartronic® CVT transmission paddle shifters	○	○	●	●	●	●
8 cup holders	●	●	●	●	●	●
Overhead console with dual maplights and sunglasses storage	●	●	●	●	●	●
Retractable/removable cargo-area cover	-	●	●	●	●	●
2 cargo-area grocery bag hooks and 4 cargo tiedown hooks	●	●	●	●	●	●
Cargo-area underfloor storage	●	●	●	●	●	●
Removable cargo-area tray	●	●	●	●	●	●

AUDIO AND COMMUNICATION SYSTEMS

4-speaker single-CD audio system with 3.5-mm auxiliary jack	●	-	-	●	-	-
6-speaker single-CD audio system with USB port/iPod® control, Bluetooth audio streaming and hands-free phone connectivity, and 3.5-mm auxiliary jack	-	●	-	-	●	-
440-watt 9-speaker single-CD Harman Kardon premium audio system with amplifier, subwoofer, HD Radio™, USB port/iPod® control, XM® Satellite Radio ⁴ , Bluetooth audio streaming and hands-free phone connectivity, and 3.5-mm auxiliary jack	-	○	●	-	○	●
SIRIUS® Satellite Radio ⁵	□	□	-	□	□	-
XM® Satellite Radio ⁵	□	□	-	□	□	-

INSTRUMENTATION

Analog speedometer, tachometer, "eco" fuel economy and fuel level gauges	●	●	●	●	●	●
Digital trip computer displaying fuel economy, digital clock and ambient temperature	●	●	●	●	●	●

CLIMATE CONTROL

Manually adjustable CFC-free air-conditioning system with rotary controls for temperature, 4-speed fan and airflow direction	●	●	-	●	●	-
Dual-zone automatic digital climate control system with controls for temperature, 6-speed fan, airflow direction, dual-zone lockout and CFC-free air conditioning	-	-	●	-	-	●

SECURITY

	2.5i	2.5i Premium	2.5i Limited	3.6R	3.6R Premium	3.6R Limited
Keyless entry system with answer-back electronic chirp	●	●	●	●	●	●
Antitheft security system with engine immobilizer	●	●	●	●	●	●

SAFETY

ACTIVE						
Subaru Symmetrical All-Wheel Drive (AWD)	●	●	●	●	●	●
SUBARU BOXER® engine	●	●	●	●	●	●
4-wheel antilock brakes (ABS) with Electronic Brake-force Distribution (EBD)	●	●	●	●	●	●
Brake Assist	●	●	●	●	●	●
Vehicle Dynamics Control (VDC)	●	●	●	●	●	●
Traction Control System (TCS)	●	●	●	●	●	●
Tire Pressure Monitoring System (TPMS)	●	●	●	●	●	●
Daytime Running Lights (DRL)	●	●	●	●	●	●

PASSIVE

Dual-stage deployment driver and front-passenger front airbags (SRS) ⁶	●	●	●	●	●	●
Subaru advanced frontal airbag system (SRS) ⁶	●	●	●	●	●	●
Side-curtain airbags protecting front and rear outboard occupants (SRS) ⁶	●	●	●	●	●	●
Seat-mounted front side-impact airbags (SRS) ⁶	●	●	●	●	●	●
Height-adjustable front seat head restraints	●	●	●	●	●	●
Three individual rear seat head restraints	●	●	●	●	●	●
Height-adjustable 3-point front seatbelts with pretensioners and force limiters. 3-point rear seatbelts at all seating positions.	●	●	●	●	●	●
Rear child-safety door locks	●	●	●	●	●	●
LATCH system: Lower Anchors and Tethers for Children	●	●	●	●	●	●
Rollover sensor	●	●	●	●	●	●

OPTIONAL EQUIPMENT

Lineartronic® CVT (Continuously Variable Transmission)	○	○	●	-	-	-
440-watt 9-speaker single-CD Harman Kardon premium audio system with amplifier, subwoofer, HD Radio™, USB port/iPod® control, XM® Satellite Radio ⁴ , and Bluetooth audio streaming and hands-free phone connectivity	-	○ ⁷	●	-	○ ⁸	●
Navigation System Package: Voice-activated 8-inch high-resolution touch-screen GPS navigation system and single-CD/DVD ¹⁰ player, Rear-Vision Camera, and auto-dimming rearview mirror with HomeLink®	-	-	○ ^{8,9}	-	-	○ ^{8,9}
Power Moonroof Package: Power tilt/sliding-glass moonroof (96% UV light reducing), auto-dimming rearview mirror with HomeLink® and Rear-Vision Camera	-	○ ⁷	○	-	○	○
All-Weather Package: Windshield wiper de-icer, heated side mirrors and heated front seats	○ ³	○	●	-	●	●
Alloy Wheel Package: 17-inch alloy wheels, fog lights, All-Weather Package	○	-	-	-	-	-
SIRIUS® Satellite Radio ⁵	□	□	-	□	□	-
XM® Satellite Radio ⁵	□	□	-	□	□	-

● Standard ○ Optional - Not equipped □ Available dealer-installed accessory

¹ 2012 Subaru Outback non-turbo 2.5-liter models achieving a Partial Zero Emission Vehicle (PZEV) rating by the California Air Resources Board are available in all 50 states. Only those sold and registered in California, Connecticut, Maine, Maryland, Massachusetts, New Jersey, New York, Rhode Island and Vermont will be eligible for the 15 years/150,000 mile emission warranty. Oregon, Pennsylvania and Washington vehicles are not covered under PZEV emissions control warranty. See your warranty maintenance booklet for additional information. ² 2012 EPA fuel economy estimates. Actual mileage may vary. ³ Included in Alloy Wheel Package. See equipment listing above. ⁴ XM® Satellite Radio hardware standard as part of Harman Kardon audio system. Activation and required monthly subscription sold separately. Includes 4-month trial subscription. See your dealer. ⁵ Available as a dealer- or port-installed accessory. Activation and required monthly subscription sold separately. Includes 3-month trial subscription. See your dealer. ⁶ The Supplemental Restraint System (SRS) (airbags) affords the driver and the front and rear outboard passengers additional protection in moderate to severe frontal and side-impact collisions. This system provides supplemental protection only, and seatbelts must be worn in order to avoid injuries to out-of-position occupants upon airbag deployment and to provide the best combined protection in a serious accident. Children should always be properly restrained in the rear seat. ⁷ Requires optional All-Weather Package. ⁸ Requires optional Power Moonroof Package. ⁹ HD Radio™ not available with Navigation System Package. ¹⁰ DVD player only with vehicle stopped and parking brake engaged.

Some images shown are for illustration purposes only. Specifications in this brochure are based on the latest product information available at the time of publication. For the most up-to-date and detailed product information, log on to www.subaru.com. Some equipment shown in photography in this brochure is optional at extra cost. Specific options may be available only in combination with other options. Specific combinations of equipment or features may vary from time to time and by geographic area. Certain accessories and equipment may not be available at the time of publication. Subaru of America, Inc., reserves the right to change or discontinue at any time, without notice, prices, colors, materials, equipment, accessories, specifications, models and packages without incurring any obligation to make the same or similar changes on vehicles previously sold. Colors shown may vary due to reproduction and printing processes.

This brochure was prepared by Subaru of America, Inc. A warranty from Subaru of America, Inc., is available only on cars sold to the first retail purchaser through an authorized Subaru dealer in the continental U.S. or Alaska. Every owner of the car during the warranty period shall be entitled to the benefit of these warranties. Subaru, SUBARU BOXER, Added Security, Equity Shield and Outback are registered trademarks. Confidence in Motion is a trademark of Fuji Heavy Industries, Ltd. Harman Kardon is a registered trademark of Harman International Industries, Incorporated. HomeLink is a registered trademark of Prince Corporation, a wholly owned subsidiary of Johnson Controls. Lineartronic is a registered trademark. SIRIUS and XM Radio are registered trademarks of SIRIUS XM Radio Inc. HD Radio is a trademark of iBiquity Digital Corporation. Bluetooth is a registered trademark of Bluetooth SIG, Inc. iPod is a registered trademark of Apple, Inc. For more information, contact your Subaru dealer or log on to subaru.com.

Make your Outback truly yours.



All-weather Floor Mats

Custom-fitted, heavy-gauge protective mats. Helps protect vehicle's carpet from sand, dirt and moisture.

Not intended for use over top of carpeted floor mats.



Dog Guard/Compartment Separator

Separates pets and cargo from the passenger area.

Not for use with child seats requiring tether straps.



Trailer Hitch

Heavy-duty rated at up to 3,000 lbs. towing capacity and 200 lbs. tongue weight.

Hitch ball not included. Trailer brakes may be needed. 2.5i: 2,700 lbs.; 3.6R: 3,000 lbs.



Auto-dimming Mirror with Compass and HomeLink®

Mirror darkens when headlights are detected from behind the vehicle. Includes a compass and three integrated HomeLink® buttons that are programmable for most garage-door openers and other HomeLink-compatible devices.



Ski and Snowboard Carrier

Holds up to 6 pairs of skis or 4 snowboards. May also be used to carry fishing rods.



Puddle Lights

L.E.D. lights activate when vehicle doors are unlocked using the keyless entry. A soft glow illuminates the ground, aiding entry and exit of the vehicle.



Body Side Moldings

Attractive color-matched moldings coordinate with the styling of the vehicle, while helping to protect doors from unsightly dings.



Kayak Carrier

Cradles and securely transports most kayak hull shapes. Includes straps with padded buckles.



Splash Guards

Help protect the vehicle's paint finish from stones and road grime.



Rear Seat Entertainment System

Rear Seat Entertainment System includes two 7" LCD monitors and two DVD players integrated into the replacement front seat headrests. This dual screen system allows rear passengers the option of viewing movies, listening to music or playing games either simultaneously or independently. Individual DVD players may be controlled with control buttons on each front panel or with the included remote control.

The system includes wireless headphones*, is iPod® ** and MP3 compatible, and includes an A/V jack for connecting external inputs.

*Headphones are for rear passenger use only. **iPod accessory is not included.



Side Window Deflectors

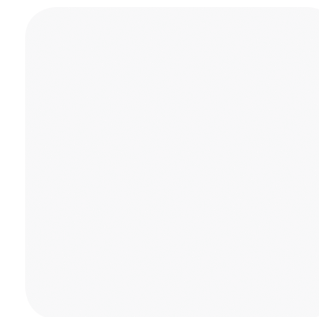
Let the fresh air in while helping to keep the weather out. Deflector design includes integrated chrome insert to match window frame trim.

Side Window Deflectors may not be legal in all states. Please check the laws of your state.

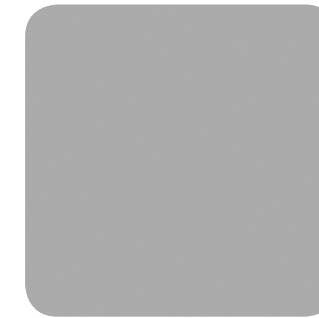


Remote Engine Starter

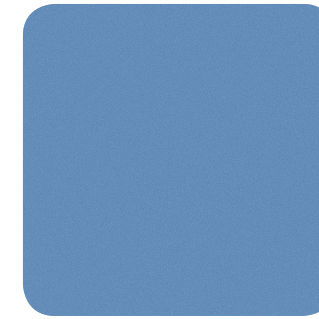
Allows vehicle to start by pushing a button from the convenience of home or the office (up to 400 feet away depending on obstructions) so that the vehicle's interior temperature is more comfortable upon entry. Remote confirms when vehicle engine has been started.



Satin White Pearl



Ice Silver Metallic



Sky Blue Metallic

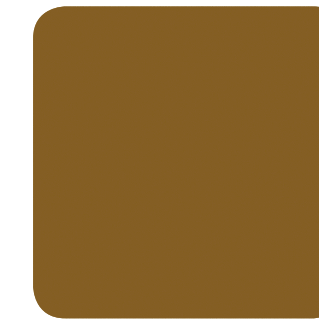


Cypress Green Pearl



Ruby Red Pearl

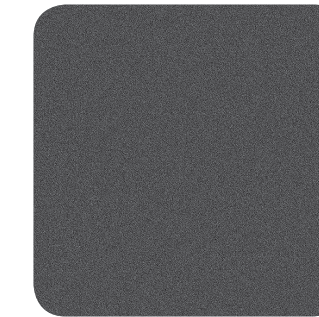
Paint



Caramel Bronze Pearl



Deep Indigo Pearl



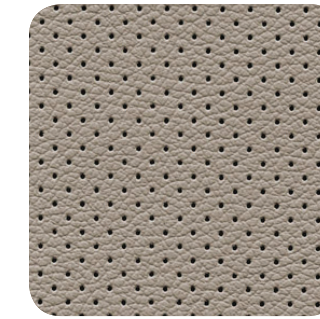
Graphite Gray Metallic



Crystal Black Silica



Warm Ivory Cloth (WIC)

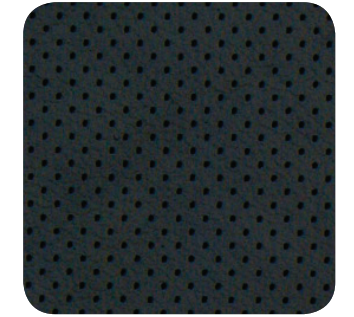


Warm Ivory Leather (WIL)

Upholstery



Off-Black Cloth (OBC)

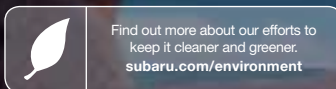


Off-Black Leather (OBL)

Color Combinations	2.5i-2.5i PREMIUM 3.6R-3.6R PREMIUM	2.5i LIMITED 3.6R LIMITED
Satin White Pearl	WIC	WIL
Ice Silver Metallic	OBC	OBL
Sky Blue Metallic	OBC	OBL
Cypress Green Pearl	WIC	WIL
Ruby Red Pearl	OBC	OBL
Caramel Bronze Pearl	WIC	WIL
Deep Indigo Pearl	WIC	WIL
Graphite Gray Metallic	OBC	OBL
Crystal Black Silica	WIC	WIL

Responsible. Reliable. Ready to join the family.

At Subaru, we're committed to building a lasting, rewarding relationship with you and the world we share. We start by building our vehicles to last—it's why 96% of all the vehicles we've built in the last 10 years are still on the road today.¹ We also share your desire for a cleaner, greener world. The Forester, Impreza, Legacy and Outback have all been recognized with Partial Zero Emission Vehicle—PZEV²—status because of their exceptionally low emissions. What's more, in 2004 Subaru of Indiana Automotive, Inc. (SIA) became the first manufacturing facility in the U.S. to reach zero landfill status—nothing from its manufacturing efforts ever goes into a landfill.



These brochures were printed with vegetable-based inks and produced using a "Green Printing Process" and FSC® standards. The Forest Stewardship Council™ (FSC) is an international organization that brings people together to find solutions which promote responsible stewardship of the world's forests and environments.

By producing these brochures in a green way rather than by traditional methods, we saved 105 trees preserved for the future; 302 lbs water-borne waste not created; 44,496 gallons wastewater flow saved; 4,923 lbs solid waste not generated; 9,694 lbs net greenhouse gases prevented; 74,196,840 BTUs energy not consumed.

¹ Based on Polk U.S. vehicles in operation registration statistics 2001–2010. ² 2012 Forester, Impreza, Legacy and Outback 2.5L non-turbo models certified as Partial Zero Emission Vehicle (PZEV) are available in all 50 states. Only those sold and registered in California, Connecticut, Maine, Maryland, Massachusetts, New Jersey, New York, Rhode Island and Vermont will be eligible for the 15 years/150,000 mile emission warranty. Oregon, Pennsylvania and Washington vehicles are not covered under PZEV emissions control warranty.

