



Innovation  
that excites

2014  
**370Z**<sup>®</sup>

**WELCOME TO THE 2014 NISSAN 370Z<sup>®</sup> DIGITAL BROCHURE**

Full of images, feature stories, and all the specification and trim level information you need to help select your Z.<sup>®</sup>

[Click here](#) to sign up for news and updates on the 2014 Nissan Z.<sup>®</sup>





**WOULDN'T IT BE COOL IF\_**  
**LEADING-EDGE AND LEGENDARY**  
**CAME IN ONE SWEET PACKAGE?**

It's a claim few sports cars can make. And one absolutely worth experiencing. Your first stop – a curvy road not far from town. A perfect place to hear a dual exhaust bounce 332 hp of pure adrenaline off a canyon wall. To feel the massive braking power of available 14" front discs as you set up for a tight hairpin turn. The feedback through the wheel and the seats as a dynamically balanced chassis just grips and grips and grips. More? How about a perfect downshift, thanks to the world's first available rev-matching manual transmission. And somewhere along the way, find a scenic turnout, and just take in the aggressive design that's inspired awe and envy for over 40 years. Then fire up that 3.7-liter V6, stand on it, and you're gone. The 2014 370Z.<sup>®</sup> Sweet.

Nissan 370Z<sup>®</sup> Touring Coupe shown in Brilliant Silver with optional equipment. Nissan 370Z<sup>®</sup> Touring Roadster shown in Magma Red with optional equipment.



Nissan 370Z<sup>®</sup> Coupe shown in Pearl White with optional equipment.



**Some may say you're obsessed, but we understand** – in a sports car, everything has to be right. That's why you'll find the main gauges adjust with the steering column, so you always have a clear view. The center console controls are located within easy reach, and are easily identifiable by touch. There's even a uniquely bolstered driver's seat for enhanced support, knee pads on both sides of the console and anti-slip material on the seat cushion.

A side profile of a red Nissan 370Z Coupe parked in front of a brick building with arched windows. The car is shown in a dark, moody environment, likely at night or in low light. The brick wall behind it has several arched windows with dark frames. The car's sleek, aerodynamic design is highlighted by the lighting, showing its curves and the 'N' badge on the front fender. The wheels are multi-spoke alloy wheels with red brake calipers visible through the spokes.

**THE FEELING OF  
A 7,500-RPM HEARTBEAT.**

Nissan 370Z® Coupe shown in Magma Red with optional equipment.

00:00 sec



00:04 sec



00:09 sec



00:16 sec



00:21 sec



## THE FEELING OF UNLIMITED POSSIBILITIES.

Taste freedom as the breeze brushes your face. Hear the sound of 332 pure horsepower through a tuned exhaust. Embrace the sky as the Roadster folds its power top in about 20 seconds. Drop it from the cozy cockpit<sup>1</sup> or even from the outside by pushing a button on the driver's door. It's time to rev your senses.



<sup>1</sup>Do not drive the vehicle with the top partially opened. Always make sure the top is either fully opened or closed before driving. See Owner's Manual regarding proper use.



Nissan 370Z<sup>®</sup> Touring Roadster shown in Black Cherry with optional equipment.



**3.7** LITER  
**V6**    **332** HP    **270** LB-FT  
**TORQUE**

**AT ITS CORE,  
THE HEART OF A LEGEND.**

As long as there has been a Z<sup>®</sup>, there has been a soulful 6-cylinder leading the way. In this case, the 4th-generation of the legendary VQ V6 engine. With a 3.7-liter displacement for massive muscle, this 332-hp dynamo features advanced Variable Valve Event and Lift (VVEL) technology that continuously tunes valve lift and timing for quicker response and a broader torque curve, while optimizing fuel efficiency and reducing emissions. And while this extensive engineering may sound intriguing on paper, the exhilaration from idle to the 7,500-rpm redline – on the straights or through the corners – is pure, pulse-pounding magic.





**NISSAN SYNCHROREV MATCH®**  
**INNOVATION THAT'S A MATCH MADE IN DRIVING HEAVEN.**

Wouldn't it be cool to have a perfectly matched shift every time? SynchroRev Match® gives you the shifting skills of a pro, for a smoother, controlled drive, from your favorite twisty road to your daily commute. It's one manual transmission so smooth, it would make an automatic jealous. Except maybe, the Z's exceptionally talented 7-speed automatic.



**A world's first.** Included in the Sport Package, SynchroRev Match® technology – the first in any production car – monitors the 6-speed manual's clutch pedal, shift lever and vehicle speed. As you shift to a lower gear, the system will “blip” the throttle to the ideal engine rpm for a supremely smooth downshift as you let out the clutch. The system also works when upshifting to give you a smooth flow of power when accelerating.

**Control at your fingertips.** Want effortless cruising? Put the 7-speed automatic transmission in “D.” For a quick gear change, just pull the steering column-mounted lightweight magnesium paddle shifters. In Manual mode, you get manual-style control with a nudge of the shift lever or a pull of the paddle shifters. The transmission can even hold a gear in cornering for better balance, or downshift before a corner for more effective braking. And when a downshift is needed, Downshift Rev Matching automatically opens the throttle to match the rpm for smoother gear changes.



**Lightweight suspension components.** The lighter a suspension's components, the more quickly it can react to the driver and bumps in the road. Use of strong yet lightweight aluminum makes the Z<sup>®</sup> suspension extremely responsive. Its double-wishbone front and 4-link rear design helps to keep the tires vertical to the ground, maximizing their contact patches. Dual flow pass shocks enhance control. And super-light forged 19" alloy wheels are available for even quicker response.

**4-piston brake calipers on 14" front rotors.** Balance doesn't just apply to cornering. Bringing the powerful Z<sup>®</sup> to a halt are its largest brakes ever – available 14" front rotors, with the gripping power of 4-piston front calipers. Purpose-designed ducting helps to reduce fade and provide predictable and precise stopping power.

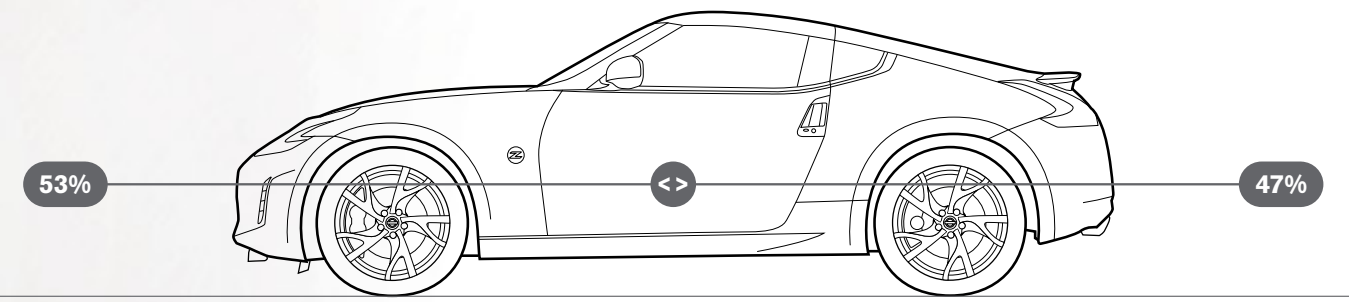


## MAY THE G-FORCE BE WITH YOU.

Designed to conquer every corner, the Nissan 370Z<sup>®</sup> starts with a low center of gravity and a short wheelbase for quick response. Structural supports under the hood and along the body reinforce the chassis to handle the loads the suspension can dish out. Add in an enthusiast's wish list of high-performance componentry. And at every turn of the wheel, find pure joy as the 370Z<sup>®</sup> turns handling science into pure performance art.

**53/47 weight distribution.** Some consider a static 50/50 balance to be the perfect weight distribution for handling. But Nissan engineers realized that a 53 front/47 rear static ratio is actually ideal. At the precise moment the driver accelerates out of a corner's apex, the weight distribution shifts rearward and becomes an approximate 50/50 balance. This translates into enhanced tire contact for better acceleration, quicker turns and a handling feel that's uniquely Z<sup>®</sup>.

**Vehicle Dynamic Control.** A great sports car shouldn't just exhilarate, it should also inspire confidence. Vehicle Dynamic Control (VDC) on the 370Z<sup>®</sup> continuously monitors the speed of each wheel, steering angle, yaw, lateral G-forces and even braking pressure. It compares the data to the steered vehicle path and, if it senses the onset of plowing (understeer) or fishtailing (oversteer), VDC brakes individual wheels and/or reduces engine power to help keep you on your steered course.<sup>1</sup>



<sup>1</sup>VDC, which should remain on when driving except when freeing the vehicle from mud or snow, cannot prevent accidents due to abrupt steering, carelessness, or dangerous driving techniques. Always drive safely.

## DESIGNED FOR THE REAL WORLD.

**Seats sculpted to hold you.** The 370Z®'s driver seat shows how seriously we take every detail of driving. The upper seat-back has cutaway areas to help your arms move freely for steering and shifting. To let you work the pedals more easily, the lower seat cushions also feature cutaways. Along with aggressive side bolsters, the seat also features anti-slip materials to help hold you in place.

**A place for everything.** While it's fun to attack your favorite twisty road, a sports car also has to function in day-in, day-out driving. To keep things orderly, the 370Z® features three cup holders, a lockable glove compartment, dash-mounted storage (not available with navigation), parcel shelves behind both seats and a handy parcel box behind the passenger seat.



**Coupe cargo area.** Plenty of open space for the important things in life – like sports gear. An available retractable cargo cover helps keep things out of sight.

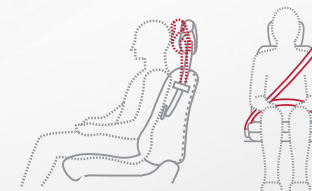
**Roadster trunk.** A smartly designed convertible top means usable trunk space. Even with the top down, you can still fit a golf bag in the trunk.



## EVEN WHEN REALITY BITES.

**High-performance protection.** The Nissan Advanced Air Bag System includes dual-stage supplemental front air bags equipped with seat belt sensors and an occupant-classification sensor. These dual-stage air bags adjust their inflation rate, depending on the severity of impact and seat belt use. If the passenger seat is empty, a sensor actually deactivates that air bag. In addition, standard side-impact supplemental air bags are built into the seats, so they move with you as you adjust your seat. Standard curtain side-impact supplemental air bags (door-mounted on Roadster) help protect you and your passenger.<sup>1</sup>

**6 STANDARD AIR BAGS<sup>1</sup>**



**Seat belt technologies.** Utilize pretensioners to help tighten the belt when front air bags deploy. And if your body puts too much force on the belt, load limiters give a bit.

**Active Head Restraints.** They help reduce the chance of whiplash injuries by moving up and forward toward your head during certain rear-end collisions.

<sup>1</sup>Air bags are only a supplemental restraint system; always wear your seat belt. Do not use rear-facing child restraints in this vehicle. All children 12 and under should be properly secured in child restraints, booster seats, or seat belts according to their size. Air bags will only inflate in certain accidents. See your Owner's Manual for more details. Inflated air bags shown for illustration purposes only; actual coverage area may differ. Air bags deflate after deployment.



**EVEN THE TECHNOLOGY IS DESIGNED TO PERFORM.**

The 370Z® keeps a strong connection to your world as well as the road. With the available Bose® audio system, you've got an amazing choice of entertainment to create a soundtrack for your drive. And with the available touch-screen voice-activated Nissan Hard Drive Navigation System, you've got so much more than just directions.<sup>1</sup>

**Knowledge is king.** The available Nissan Hard Drive Navigation System helps steer you clear of traffic jams, thanks to NavTraffic real-time traffic advisories.<sup>1, 2</sup> Hungry for more than just directions? The system also provides you with trusted ratings and reviews by Zagat Survey.<sup>®</sup> NavWeather service provided by SiriusXM advises you of severe weather and potentially slippery roads that could affect your drive, as well as National Weather Service warnings and 3-day weather forecasts.<sup>2</sup> And with the available RearView Monitor, shift into "Reverse" and you get a glimpse of what's directly behind you on the navigation system's large 7" VGA screen.<sup>3</sup>



**Bose® audio system.** Because even the most dedicated enthusiast might want to listen to something other than its spine-tingling dual-exhaust note, the 370Z® Coupe and Roadster feature an available Bose® audio system custom-engineered for the unique shape of the interior. And your choices in entertainment are nearly limitless.

**USB input.** Plug your iPod® into the available USB input and you can control its functions through the audio system or touch-screen monitor, plus get song readouts on the digital display.<sup>4, 5</sup> No iPod®? No problem. You can also play digital music files from a USB flash drive.<sup>1, 5</sup>

**SiriusXM Satellite Radio.** With 170 channels of news, sports, music and more, there's always something worth listening to. If your favorite artist is playing on one of those channels, the Z®'s audio system alerts you, and asks if you want to switch over.<sup>2</sup>

**Bluetooth®.** The available Bluetooth® Hands-free Phone System lets you make and receive calls through the audio system. On Z® models with the available navigation system, you can even stream music from any compatible device via Bluetooth® wireless technology.<sup>1, 6</sup>



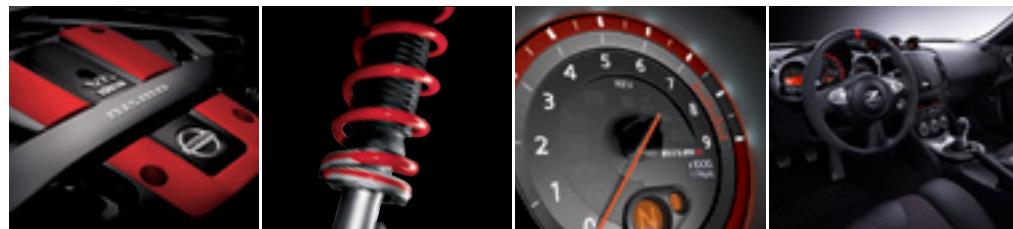
<sup>1</sup>Never program while driving. GPS mapping may not be detailed in all areas or reflect current road regulations. <sup>2</sup>Required SiriusXM Satellite Radio, NavTraffic and NavWeather subscriptions sold separately after trial period. Installation costs, one-time activation fee, other fees and taxes will apply. NavTraffic available in select markets. Services available only to those 18 or older in the 48 contiguous states and D.C. Fees and programming subject to change. Subscriptions governed by Customer Agreement available at siriusxm.com. ©2013 Sirius XM Radio Inc. Sirius, XM and all related marks and logos are trademarks of Sirius XM Radio Inc. <sup>3</sup>Parking aid/convenience feature. Cannot completely eliminate blind spots. May not detect every object and does not warn of moving objects. Always check surroundings before moving vehicle. Not a substitute for proper backing procedures. Always turn to check what is behind you before backing up. <sup>4</sup>Driving is serious business and requires your full attention. Do not operate any devices connected to the USB or auxiliary audio input jack while driving. <sup>5</sup>Always give your full attention to driving. Avoid operating your iPod® in such a way that you can be distracted during vehicle operation. See dealer for details. iPod is a registered trademark of Apple, Inc. All rights reserved. iPod not included. <sup>6</sup>Availability of specific features is dependent upon the phone's Bluetooth® support. Please refer to your phone Owner's Manual for details. The Bluetooth word mark and logos are owned by Bluetooth SIG, Inc., and any use of such marks by Nissan is under license. Zagat Survey® is a registered trademark of Zagat Survey, LLC Ltd.

# nismo

NISSAN 370Z<sup>®</sup> NISMO<sup>®</sup>

## INNOVATION THAT LIVES TO PUSH THE ENVELOPE.

Wouldn't it be cool to take a legend to the next level? With a name derived from Nissan Motorsports, you should expect nothing less from NISMO<sup>®</sup>, our in-house performance arm. Started by a group of maverick Nissan engineers almost 30 years ago, NISMO<sup>®</sup> is synonymous with passion, expertise, and the heights of Nissan performance – not to mention decades of racing dominance. NISMO<sup>®</sup> puts its all into everything it builds, from championship-winning racecars and accessories for street cars to cutting-edge vehicles like the 370Z<sup>®</sup> Nismo.<sup>®</sup> With 350 horsepower, a competition-tuned suspension and a look uniquely its own, it is transformed into a sports car singularly worthy of being branded NISMO.<sup>®</sup>



**Competition-tuned handling. Competition-inspired design.** Serious grip starts with specially tuned springs, shocks and stabilizer bars designed to satisfy the most demanding enthusiast. Extra braces on the front strut tower bar and special vibration dampers on the front body frame rail and rear subframe are added for impressive overall body rigidity and a controlled ride. The discriminating eye will also appreciate the high down-force body design, rear diffuser and 19" RAYS<sup>®</sup> forged aluminum wheels. And for 2014, the 370Z<sup>®</sup> Nismo<sup>®</sup> becomes even more desirable with a special Alcantara<sup>®</sup>-covered steering wheel, red accents on the tachometer, and new signature NISMO<sup>®</sup> design theme, including contrasting gray exterior trim with red accents.





# TAKE PART IN PUBLIC DISPLAYS OF AFFECTION.

## GENUINE NISSAN ACCESSORIES.



Every Genuine Nissan Accessory is: custom-fit, custom-designed and durability-tested; backed by Nissan's 3-year/36,000-mile (whichever occurs first) limited warranty; and can be financed when installed by dealer at time of purchase.<sup>1</sup>

- A. **Vehicle Cover**  
Protects your Z<sup>®</sup> from sun, dust and birds taking target practice.
- B. **NISMO<sup>®</sup> Rear Decklid Spoiler<sup>2</sup>**  
To the winner go the spoilers.
- C. **Carpeted Floor Mats**  
Preserve and protect in style.
- D. **NISMO<sup>®</sup> Shift Knobs<sup>2</sup>**  
Put legendary performance in the palm of your hand.
- E. **Illuminated Kick Plates (2-piece set)**  
A grand entry every time you get in.
- F. **NISMO<sup>®</sup> Cat-back Exhaust System<sup>2</sup>**  
More horsepower, more torque and more aggressive sound.

- G. **Z<sup>®</sup> Structured Low Profile Charcoal Cap**  
Take some iconic style with you wherever you go.
- H. **Front Chin Aero Deflector**  
Less turbulence. More downforce. Looks cool, too.

### Additional Accessories:

- Carpeted Trunk Mat
- Portable Cargo Organizer
- Rear Decklid Spoiler
- In-mirror RearView Monitor<sup>3</sup> with HomeLink<sup>®</sup> and Compass
- Splash Guards
- NISMO<sup>®</sup> Suspension Kits<sup>2</sup>
- NISMO<sup>®</sup> Brake Pads, Front and Rear<sup>2</sup>
- NISMO<sup>®</sup> Carpeted Floor Mats<sup>2</sup>



Click the button to see short videos on Genuine Nissan Accessories in action. Or go to [bit.ly/gnavideos\\_z](http://bit.ly/gnavideos_z)

For more information and to shop online for Genuine Nissan Accessories, go to [parts.NissanUSA.com](http://parts.NissanUSA.com).

<sup>1</sup>Covered by Nissan's Limited Warranty on Genuine Nissan Accessories for the longer of 12 months/12,000 miles (whichever occurs first) or the remaining period under the 3-year/36,000-mile (whichever occurs first) Nissan New Vehicle Limited Warranty. Terms and conditions apply. See Warranty Information Booklet for details. <sup>2</sup>S-tune components are engineered by NISMO for the enthusiast that drives on the street. S-tune components offer credible, measured increases in performance, but with an additional feature that the aftermarket can't match – each S-tune component is covered by Nissan Parts and Accessory Limited Warranty, up to 36 months/36,000 miles (whichever occurs first) if installed at time of vehicle sale (like any other Genuine Nissan part or accessory). <sup>3</sup>Parking aid/convenience feature. Cannot completely eliminate blind spots or warn of moving objects. May not detect every object. Always check surroundings before moving vehicle. Not a substitute for proper backing procedures. Always turn to check what is behind you before backing up. HomeLink<sup>®</sup> is a registered trademark of Johnson Controls Technology Company.

**Nissan 370Z<sup>®</sup> Coupe** shown in Gun Metallic with Front Chin Aero Deflector, NISMO<sup>®</sup> Rear Decklid Spoiler and NISMO<sup>®</sup> Graphics Kit. **Nissan 370Z<sup>®</sup> Roadster** shown in Magma Red with Front Chin Aero Deflector.

## CHOOSE YOUR TRIM LEVEL

### COUPE

#### 370Z®

- 332 hp, 270 lb-ft of torque, 3.7-liter V6
- 6-speed manual transmission or 7-speed automatic transmission
- 18" Aluminum-alloy wheels
- Yokohama® ADVAN Sport® high-performance W-rated tires
- High Intensity Discharge (HID) bi-functional xenon headlights
- LED Daytime Running Lights
- LED illuminated Z® side marker emblems
- Nissan Intelligent Key® with Push Button Ignition
- Six standard air bags

#### KEY AVAILABLE PACKAGE:

- Sport Package



### ROADSTER

#### 370Z®

- 332 hp, 270 lb-ft of torque, 3.7-liter V6
- 7-speed automatic transmission
- 18" Aluminum-alloy wheels
- Bridgestone® Potenza® RE050A high-performance W-rated tires
- Power convertible soft-top with glass window
- Rear glass wind deflector
- Power moving tonneau cover
- High Intensity Discharge (HID) bi-functional xenon headlights
- LED Daytime Running Lights
- LED illuminated Z® side marker emblems
- Nissan Intelligent Key® with Push Button Ignition
- Six standard air bags



#### TOURING

#### INCLUDES 370Z® EQUIPMENT PLUS:

- Leather-appointed power heated seats with synthetic suede inserts
- Driver's adjustable lumbar support
- Bose® audio system with eight speakers, including two subwoofers
- SiriusXM Satellite Radio<sup>1</sup>
- Bluetooth® Hands-free Phone System<sup>2</sup>
- Aluminum-trimmed pedals
- Auto-dimming rearview mirror
- HomeLink® Universal Transceiver

#### KEY AVAILABLE PACKAGES:

- Sport Package
- Navigation Package



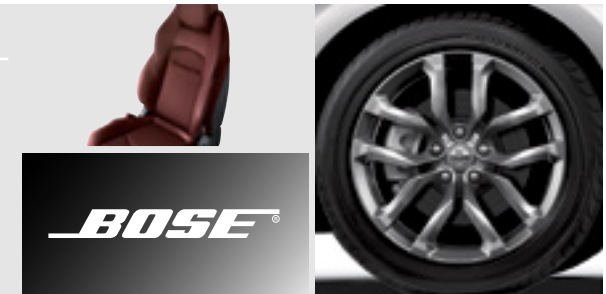
#### TOURING

#### INCLUDES 370Z® ROADSTER EQUIPMENT PLUS:

- Ventilated leather-appointed power heated and cooling seats
- Driver's adjustable lumbar support
- Bose® audio system with eight speakers, including two subwoofers
- SiriusXM Satellite Radio<sup>1</sup>
- Bluetooth® Hands-free Phone System<sup>2</sup>
- Aluminum-trimmed pedals
- Auto-dimming rearview mirror
- HomeLink® Universal Transceiver

#### KEY AVAILABLE PACKAGES:

- Sport Package
- Navigation Package



#### NISMO®

#### INCLUDES 370Z® EQUIPMENT PLUS:

- 350 hp, 276 lb-ft of torque, 3.7-liter V6
- 6-speed manual transmission with SynchroRev Match®
- Viscous limited-slip rear differential
- NISMO®-tuned free-flow dual exhaust with H-pipe configuration
- Nissan sport brakes – 14.0" 4-piston front brakes/13.8" 2-piston rear brakes
- High-rigidity brake hoses and R35 Special II brake fluid
- 19" NISMO® forged alloy wheels by RAYS®
- Bridgestone® Potenza® S001 high-performance Y-rated tires
- NISMO®-tuned suspension
- NISMO® reinforced front strut tower brace
- NISMO® performance body dampers
- NISMO® aerodynamic body design
- Signature NISMO® interior trim
- NISMO® Alcantara®/leather-wrapped steering wheel

#### KEY AVAILABLE PACKAGE:

- Bose® Package



### SPORT PACKAGE DETAILS

- Euro-tuned sport shock absorbers
- Nissan sport brakes – 14.0" 4-piston front brakes/13.8" 2-piston rear brakes
- SynchroRev Match®(manual transmission only)
- Viscous limited-slip differential
- 19" RAYS® forged alloy wheels
- Bridgestone® Potenza® RE050A high-performance W-rated tires
- Front chin aero deflector (Coupe only)
- Body-color rear spoiler (Coupe only)

This package is not available on NISMO® and Roadster 370Z® models.

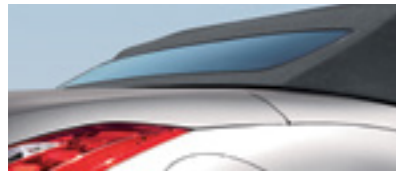


<sup>1</sup>Required SiriusXM Satellite Radio, NavTraffic and NavWeather subscriptions sold separately after trial period. Installation costs, one-time activation fee, other fees and taxes will apply. NavTraffic available in select markets. Services available only to those 18 or older in the 48 contiguous states and D.C. Fees and programming subject to change. Subscriptions governed by Customer Agreement available at [siriusxm.com](http://siriusxm.com). ©2013 Sirius XM Radio Inc. Sirius, XM and all related marks and logos are trademarks of Sirius XM Radio Inc. <sup>2</sup>Availability of specific features is dependent upon the phone's Bluetooth® support. Please refer to your phone Owner's Manual for details. The Bluetooth word mark and logos are owned by Bluetooth SIG, Inc., and any use of such marks by Nissan is under license. Alcantara® is a registered trademark of Alcantara S.p.A. Corporation. Bose® is a registered trademark of The Bose Corporation. Bridgestone® and Potenza® are registered trademarks of Bridgestone Corporation. HomeLink® is a registered trademark of Johnson Controls Technology Company. RAYS® is a registered trademark of RAYS Engineering. Yokohama® and ADVAN Sport® are registered trademarks of The Yokohama Tire Corporation.

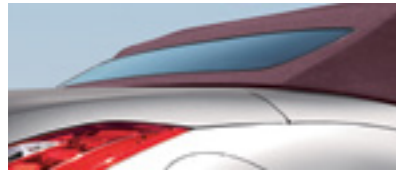
# CHOOSE YOUR COLOR



You've decided which 370Z® you want, now here comes the best part: deciding what it's going to look like. Choose your favorite color and then pick from the available interiors based on the model of your choice.



**Black Top** available with Black Cloth, Gray Leather or Black Leather



**Bordeaux Top** available with Wine Leather

■ Standard

Nissan has taken care to ensure that the color swatches presented here are the closest possible representations of actual vehicle colors. Swatches may vary slightly due to the printing process and whether viewed in daylight, fluorescent or incandescent light. Please see the actual colors at your local Nissan dealer.



Magnetic Black G41      Solid Red A54      Black Cherry NAG      Magma Red NAM      Brilliant Silver K23      Pearl White QAB      Midnight Blue RAA      Gun Metallic KAD

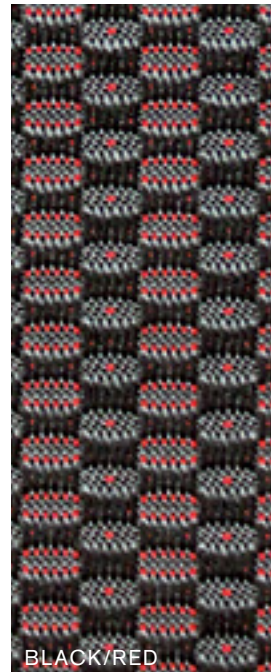
	Magnetic Black G41			Solid Red A54			Black Cherry NAG			Magma Red NAM			Brilliant Silver K23			Pearl White QAB			Midnight Blue RAA			Gun Metallic KAD		
	370Z®	TOUR	NISMO	370Z®	TOUR	NISMO	370Z®	TOUR	NISMO	370Z®	TOUR	NISMO	370Z®	TOUR	NISMO	370Z®	TOUR	NISMO	370Z®	TOUR	NISMO	370Z®	TOUR	NISMO
BLACK CLOTH	■			■			■			■			■			■			■			■		
GRAY LEATHER																								
BLACK LEATHER			■ <sup>1</sup>			■ <sup>1</sup>						■ <sup>1</sup>												
PERSIMMON LEATHER									■															
WINE LEATHER																								
NISMO BLACK/RED CLOTH																								■

<sup>1</sup>Roadster only. <sup>2</sup>Coupe only.



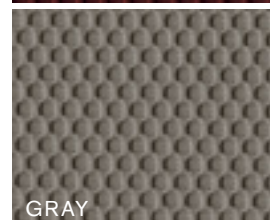
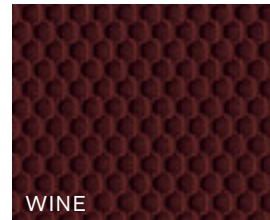
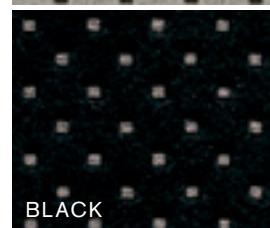
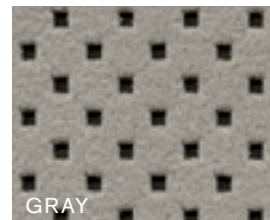
# CHOOSE YOUR FABRIC

## CLOTH (COUPE/ROADSTER)



## NISMO CLOTH (COUPE)

## LEATHER (COUPE)



## LEATHER (ROADSTER)

## SPECIFICATIONS

Engine	370Z*	TOURING	NISMO**
VQ37VHR – 3.7-liter DOHC 24-valve V6 aluminum-alloy engine <sup>1</sup>	■	■	■
Horsepower – 332 hp @ 7,000 rpm	■	■	
350 hp @ 7,400 rpm			■
Torque – 270 lb-ft @ 5,200 rpm	■	■	
276 lb-ft @ 5,200 rpm			■
Bore and stroke – 95.5 x 86.0	■	■	■
Compression ratio – 11:1	■	■	■
Maximum engine speed – 7,500 rpm	■	■	■
Emissions – Tier2-Bin5 (Fed); LEV2-ULEV (CA)	■	■	■
Continuously Variable Valve Timing Control System (CVTCS)			
with Variable Valve Event and Lift (VVEL) on intake valves	■	■	■
Twin-intake system	■	■	■
Nissan Direct Ignition System with iridium-tipped spark plugs	■	■	■
Electronic drive-by-wire throttle	■	■	■
NISMO®-tuned free-flow dual exhaust with H-pipe configuration			■

Drivetrain	370Z*	TOURING	NISMO**
Longitudinally mid-mounted front engine/Rear-Wheel Drive	■	■	■
Carbon-fiber composite driveshaft	■	■	■
6-speed close-ratio manual transmission	■ <sup>2</sup>	■	■
SynchroRev Match® (manual transmission)	■ <sup>2</sup>	■	■
7-speed automatic transmission with manual shift			
mode, paddle shifters and Downshift Rev Matching	□ <sup>2</sup> ■ <sup>3</sup> □		
Viscous limited-slip rear differential	■ <sup>2</sup>	■	■

Brakes	370Z*	TOURING	NISMO**
12.6" x 1.10" vented front discs and 12.6" x 0.63" vented rear discs	■	■	
Nissan sport brakes – 4-piston opposed aluminum calipers with 14.0" x 1.30" vented front discs and 2-piston opposed aluminum calipers with 13.8" x 0.80" vented rear discs	■ <sup>2</sup>	■	■
High-rigidity brake hoses and R35 Special II brake fluid			■
4-wheel Anti-lock Braking System (ABS)	■	■	■
Electronic Brake force Distribution (EBD)	■	■	■
Brake Assist	■	■	■

■ Standard	■ <sup>N</sup> Part of Navigation Package
□ Optional	■ <sup>B</sup> Part of Bose® Package
■ <sup>S</sup> Part of Sport Package	

Suspension/Chassis Bracing/Steering	370Z*	TOURING	NISMO**
2-link double-wishbone aluminum-alloy front suspension with aluminum subframe	■	■	■
4-link aluminum-alloy rear suspension	■	■	■
Front and rear stabilizer bars	■	■	
NISMO®-tuned suspension with increased spring, dampening and stabilizer rates			■
Ripple-control shock absorbers	■	■	
Euro-tuned sport shock absorbers	■ <sup>S</sup> <sup>2</sup>	■ <sup>S</sup>	
3-point front strut tower brace	■	■	
NISMO® reinforced 3-point front strut tower brace			■
Rear underbody V-brace	■	■	■
NISMO® front and rear performance body dampers			■
Vehicle-speed-sensitive power steering	■	■	■

Wheels/Tires	370Z*	TOURING	NISMO**
18" x 8.0" (front)/18" x 9.0" (rear) aluminum-alloy wheels	■	■	
19" x 9.0" (front)/19" x 10.0" forged alloy wheels by RAYS®	■ <sup>S</sup> <sup>2</sup>	■ <sup>S</sup>	
19" x 9.5" (front)/19" x 10.5" (rear) NISMO® forged alloy wheels by RAYS®			■
225/50WR18 (front) and 245/45WR18 (rear) Yokohama® ADVAN Sport® high-performance tires	■ <sup>2</sup>	■ <sup>2</sup>	
225/50WR18 (front) and 245/45WR18 (rear) Bridgestone® Potenza® RE050A high-performance tires	■ <sup>3</sup>	■ <sup>3</sup>	
245/40WR19 (front) and 275/35WR19 (rear) Bridgestone® Potenza® RE050A high-performance tires	■ <sup>S</sup> <sup>2</sup>	■ <sup>S</sup>	
245/40YR19 (front) and 285/35YR19 (rear) Bridgestone® Potenza® S001 high-performance tires			■
Temporary spare tire	■ <sup>2</sup> □ <sup>3</sup>	■ <sup>2</sup> □ <sup>3</sup>	■

Exterior Features	370Z*	TOURING	NISMO**
Automatic on/off headlights	■	■	■
High Intensity Discharge (HID) bi-functional xenon headlights	■	■	■
LED Daytime Running Lights	■	■	
LED taillights	■	■	■
LED illuminated Z® side marker emblems	■	■	■
Front chin aero deflector	■ <sup>S</sup> <sup>2</sup>	■ <sup>S</sup> <sup>2</sup>	
Body-color rear spoiler	■ <sup>S</sup> <sup>2</sup>	■ <sup>S</sup>	

Exterior Features (continued)	370Z*	TOURING	NISMO**
NISMO® aerodynamic body design – front and rear fascia, spoiler side sills and rear spoiler			■
Aluminum hood, doors and hatch/trunk	■	■	■
Body-color dual power heated outside mirrors	■	■	■
UV-reducing solar glass	■	■	■
Rear window defroster	■	■	■
Power convertible soft-top with glass window	■ <sup>3</sup>	■ <sup>3</sup>	
Rear wind deflector and power moving storage cover	■ <sup>3</sup>	■ <sup>3</sup>	

Comfort/Convenience	370Z*	TOURING	NISMO**
Nissan Hard Drive Navigation System with 7" VGA touch-screen monitor and voice recognition		■ <sup>N</sup>	
NavTraffic <sup>†</sup> and NavWeather <sup>†</sup> provided by SiriusXM <sup>†</sup>		■ <sup>N</sup>	
Zagat Survey® restaurant reviews		■ <sup>N</sup>	
RearView Monitor		■ <sup>N</sup>	
Automatic Temperature Control (ATC) with in-cabin microfilter	■	■	■
Bluetooth® Hands-free Phone System			■ <sup>B</sup>
3-bay gauge cluster (oil temperature, voltmeter and digital clock)	■	■	■
Fine Vision electroluminescent gauges with multi-function drive computer	■	■	■
Upshift indicator light	■	■	■
NISMO® tachometer			■
Power windows with one-touch auto-up/down feature	■	■	■
Power door locks with auto-locking feature	■	■	■
Nissan Intelligent Key® with Push Button Ignition	■	■	■
Remote windows down	■	■	■
Key-operated windows up/down	■	■	■
Illuminated steering wheel-mounted cruise control	■	■	■
HomeLink® Universal Transceiver		■	■ <sup>B</sup>
12-volt DC power outlets (two) and map lights	■	■	■
Tilt steering column with integrated gauges	■	■	■
Variable intermittent flat-blade windshield wipers	■	■	■
Auto-dimming rearview mirror		■	■ <sup>B</sup>
Sun visor with illuminated visor vanity mirrors and extensions	■ <sup>2</sup>	■ <sup>2</sup>	■
Sun visor with illuminated visor vanity mirrors	■ <sup>3</sup>	■ <sup>3</sup>	■
Cup holders (three) and lockable glove compartment	■	■	■
Dash-mounted storage (N/A with navigation)	■	■	■
Parcel box (behind passenger seat)	■	■	■
Parcel shelves (behind seats)	■	■	■
Rear cargo cover		■ <sup>2</sup>	

<sup>1</sup>Premium fuel required. <sup>2</sup>Coupe only. <sup>3</sup>Roadster only. <sup>4</sup>Required SiriusXM Satellite Radio, NavTraffic and NavWeather subscriptions sold separately after trial period. Installation costs, one-time activation fee, other fees and taxes will apply. NavTraffic available in select markets. Services available only to those 18 or older in the 48 contiguous states and D.C. Fees and programming subject to change. Subscriptions governed by Customer Agreement available at siriusxm.com. ©2013 Sirius XM Radio Inc. Sirius, XM and all related marks and logos are trademarks of Sirius XM Radio Inc. The Bluetooth word mark and logos are owned by Bluetooth SIG, Inc., and any

use of such marks by Nissan is under license. Bridgestone® and Potenza® are registered trademarks of Bridgestone Corporation. HomeLink® is a registered trademark of Johnson Controls Technology Corporation. RAYS® is a registered trademark of RAYS Engineering. iPod not included. Yokohama® and ADVAN Sport® are registered trademarks of The Yokohama Tire Corporation. Zagat Survey® is a registered trademark of Zagat Survey, LLC Ltd.

## SPECIFICATIONS (CONTINUED)

Seating/Appointments	370Z <sup>1</sup>	TOURING	NISMO <sup>11</sup>
8-way adjustable driver's seat	■	■	■
Driver-shaped bucket seat with thigh support	■	■	■
Driver's adjustable lumbar support		■	
4-way adjustable passenger's bucket seat	■	■	■
Power seats		■	
Heated seats		■ <sup>2</sup>	
Climate-controlled seats (heated and cooled)		■ <sup>3</sup>	
Driver and passenger knee support	■	■	■
Cloth seat trim	■		
Leather-appointed sport seats with synthetic suede inserts		■ <sup>2</sup>	
Ventilated leather-appointed sport seats		■ <sup>3</sup>	
NISMO <sup>®</sup> -embroidered cloth seats with red stitching			■
Synthetic suede door panel inserts		■	
Leather-wrapped steering wheel and shift knob	■	■	
NISMO <sup>®</sup> Alcantara <sup>®</sup> /leather-wrapped steering wheel and smooth leather-wrapped shift knob			■
Leather-wrapped parking brake lever	■	■	■
Aluminum-trimmed pedals		■	■
NISMO <sup>®</sup> plaque of authenticity with serial number and model- year designation			■
NISMO <sup>®</sup> signature red interior stitching			■

Audio/Entertainment	370Z <sup>1</sup>	TOURING	NISMO <sup>11</sup>
AM/FM/CD audio system	■		■
Four speakers	■		■
Bose <sup>®</sup> audio system with AM/FM/in-dash 6-CD changer		■	■ <sup>B</sup>
Eight speakers, including dual subwoofers		■	■ <sup>B</sup>
MP3/WMA CD playback capability		■	■ <sup>B</sup>
DVD video playback capability		■ <sup>N</sup>	
Auxiliary audio input jack	■	■	■
Auxiliary audio/video input jacks (this feature replaces auxiliary audio input jack located on head unit)		■ <sup>N</sup>	
USB connection port for iPod <sup>®</sup> interface and other compatible devices		■ <sup>N</sup>	
Streaming audio via Bluetooth <sup>®</sup> wireless technology		■ <sup>N</sup>	
SiriusXM Satellite Radio <sup>1</sup>		■	■ <sup>B</sup>
Radio Data System (RDS)		■	■ <sup>B</sup>
Speed-sensitive volume control		■	■ <sup>B</sup>
Illuminated steering wheel-mounted audio controls	■	■	■

Safety/Security	370Z <sup>1</sup>	TOURING	NISMO <sup>11</sup>
Nissan Advanced Air Bag System (AABS) with dual-stage supplemental front air bags with seat belt and occupant- classification sensors <sup>2</sup>	■	■	■
Driver and passenger seat-mounted side-impact supplemental air bags	■	■	■
Roof-mounted curtain side-impact supplemental air bags for occupants head protection	■ <sup>2</sup>	■ <sup>2</sup>	■
Door-mounted curtain side-impact supplemental air bags for occupants head protection	■ <sup>3</sup>	■ <sup>3</sup>	
Vehicle Dynamic Control (VDC) with Traction Control System (TCS)	■	■	■
Seat belts with pretensioners and load limiters (3-point ALR/ELR passenger seat belt system – ELR for driver)	■	■	■
Active Head Restraints	■	■	■
Energy-absorbing steering column	■	■	■
Zone Body construction with front and rear crumple zones	■	■	■
Hood-buckling creases	■	■	■
Aluminum side-door guard beams	■	■	■
Tire Pressure Monitoring System (TPMS)	■	■	■
Nissan Vehicle Immobilizer System	■	■	■
Vehicle Security System (VSS)	■	■	■

## PACKAGES

S Sport Package
Euro-tuned sport shock absorbers
Nissan sport brakes – 4-piston opposed aluminum calipers with 14.0" x 1.30" vented front discs and 2-piston opposed aluminum calipers with 13.8" x 0.80" vented rear discs
SynchroRev Match (manual transmission only)
Viscous limited-slip rear differential
19" x 9.0" (front)/19" x 10.0" forged alloy wheels by RAYS <sup>®</sup>
245/40WR19 and 275/35WR19 Bridgestone <sup>®</sup> Potenza <sup>®</sup> RE050A high- performance tires
Front chin aero deflector (Coupe only)
Body-color rear spoiler (Coupe only)
This package is not available on NISMO <sup>®</sup> and base Roadster 370Z <sup>®</sup> models.

### N Navigation Package (Touring Models only)

Nissan Hard Drive Navigation System with 7" VGA touch-screen monitor and voice recognition  
NavTraffic and NavWeather provided by SiriusXM<sup>1</sup>  
Zagat Survey<sup>®</sup> restaurant reviews  
RearView Monitor  
DVD video playback capability  
Auxiliary audio/video input jacks (this feature replaces auxiliary audio input jack on head unit)  
USB connection port for iPod<sup>®</sup> interface and other compatible devices  
Streaming audio via Bluetooth<sup>®</sup> wireless technology  
This package deletes the in-dash 6-CD changer.

### B Bose<sup>®</sup> Package (NISMO<sup>®</sup> Models only)

Bose<sup>®</sup> audio system with AM/FM/in-dash 6-CD changer  
Eight speakers, including dual subwoofers  
MP3/WMA CD playback capability  
SiriusXM Satellite Radio<sup>1</sup>  
Radio Data System (RDS)  
Speed-sensitive volume control  
Bluetooth<sup>®</sup> Hands-free Phone System  
HomeLink<sup>®</sup> Universal Transceiver  
Auto-dimming rearview mirror

<sup>1</sup>Required SiriusXM Satellite Radio, NavTraffic and NavWeather subscriptions sold separately after trial period. Installation costs, one-time activation fee, other fees and taxes will apply. NavTraffic available in select markets. Services available only to those 18 or older in the 48 contiguous states and D.C. Fees and programming subject to change. Subscriptions governed by Customer Agreement available at siriusxm.com. ©2013 Sirius XM Radio Inc. Sirius, XM and all related marks and logos are trademarks of Sirius XM Radio Inc. <sup>2</sup>Coupe only. <sup>3</sup>Roadster only. Alcantara<sup>®</sup> is a registered trademark of Alcantara S.p.A. Corporation. The Bluetooth<sup>®</sup> word mark and logos are owned by Bluetooth SIG, Inc., and any use of such marks by Nissan is under license. Bose<sup>®</sup> is a registered trademark of The Bose Corporation. Bridgestone<sup>®</sup> and Potenza<sup>®</sup> are registered trademarks of Bridgestone Corporation. HomeLink<sup>®</sup> is a registered trademark of Johnson Controls Technology Corporation. iPod<sup>®</sup> is a registered trademark of Apple, Inc. All rights reserved. iPod<sup>®</sup> not included. RAYS<sup>®</sup> is a registered trademark of RAYS Engineering. Zagat Survey<sup>®</sup> is a registered trademark of Zagat Survey, LLC. Ltd.

## DIMENSIONS/CAPACITIES/WEIGHTS/MPG

### Dimensions – Inches

#### Exterior

Wheelbase	100.4
Overall length	167.2 (173.4 NISMO®)
Overall width	72.6
Overall height	51.8 (up to 52.2 on Roadster)
Track width (front/rear)	
18" Aluminum-alloy wheels	61.0/62.8
19" RAYS® forged wheels	60.6/61.6
19" NISMO®/RAYS® forged wheels	61.2/62.2

#### Aerodynamics – Cd

Drag coefficient:	.30 on Coupe; .29 with Sport Pkg
	.33 on Roadster; .34 with Sport Pkg

#### Interior

Head room	38.2 (38.7 on Roadster)
Leg room	42.9
Hip room	54.6
Shoulder room	54.4

### Capacities

Seating capacity	2
Interior volume (cu. ft.)	51.6 (52.3 on Roadster)
Cargo volume (cu. ft.)	6.9 (4.2 on Roadster)
Fuel tank (gals.)	19.0

### Curb Weights – Lbs.<sup>1</sup>

Base total	370Z®	TOURING	NISMO®
<b>Coupe</b>			
Manual transmission	3,272	3,318	3,340
Automatic transmission	3,309	3,353	N/A
<b>Roadster</b>			
Manual transmission	N/A	3,488	N/A
Automatic transmission	3,470	3,510	N/A
Weight distribution	54/46	54/46	54/46
Weight distribution (with passengers)	53/47	53/47	53/47

### 2013 EPA Fuel Economy Estimates

City/Hwy/Combined MPG	COUPE	ROADSTER
Manual transmission	18/26/21	17/24/20
Automatic transmission	19/26/22	18/25/21

Actual mileage may vary with driving conditions – use for comparison only. 2013 EPA fuel economy estimates shown.  
2014 EPA estimates not available at this time.

## BUYING/OWNING



**Nissan Motor Acceptance Corporation.** Whether you're buying or leasing, you'll find attractive rates and flexible terms to make your purchase more accessible.

**College Grad Program.** Ask about our special new vehicle pricing available to individuals up to two years after graduation.

**Active and Reserve US Military Program.** Ask about our fixed discount on new vehicle pricing available to those serving our country.

**New Vehicle Limited Warranties.** Protection for your new Nissan includes 3-year/36,000-mile (whichever occurs first) basic coverage and 5-year/60,000-mile (whichever occurs first) powertrain coverage. Terms, conditions and exclusions apply. See Warranty Information Booklet for complete details.

**Security+Plus®** For additional peace of mind, a variety of extended service plans lets you tailor the coverage to your driving habits.

**Maintenance+Plus®** This extended plan ensures your Nissan will receive up to 17 different services and over 33 different inspection items at each visit, using the most up-to-date diagnostic equipment available.

**Genuine Nissan Parts.** When it comes time for service, any necessary replacement parts will be made using Genuine Nissan new or remanufactured parts, or Nissan-approved parts. And they're the only parts to carry Nissan's factory-backed limited warranty.

Nissan's environmental action plan focuses on several key areas. Increasing production of Zero Emission vehicles, including the 100% electric LEAF.® Improving fuel efficiency through our PUREDRIVE™ measures. And reducing the environmental impact of manufacturing, as seen at our new, energy-efficient, low-emissions paint plant in Tennessee. For more information, log on to [NissanUSA.com/green](http://NissanUSA.com/green)



<sup>1</sup>2013 curb weights shown. 2014 curb weights not available at this time.

At [NissanUSA.com](http://NissanUSA.com), you'll find virtual product demonstrations, a way to "build your own Nissan," a dealer locator, and more information about key Nissan support services. Or if you'd prefer, call **1-800-NISSAN-3** for answers to specific questions about 370Z® or any other Nissan vehicle. The Nissan names, logos, product names, feature names, and slogans are trademarks owned by or licensed to Nissan Motor Co. Ltd. and/or its North American subsidiaries. **Always wear your seat belt, and please don't drink and drive.** ©2013 Nissan North America, Inc.

This brochure is intended for general descriptive and informational purposes only. It is subject to change and does not constitute an offer, representation or warranty (express or implied) by Nissan North America, Inc. Interested parties should confirm the accuracy of any information in this brochure as it relates to a vehicle directly with Nissan North America, Inc., before relying on it to make a purchase decision. Nissan North America, Inc., reserves the right to make changes, at any time, without prior notice, in prices, colors, materials, equipment, specifications, and models and to discontinue models or equipment. Due to continuous product development and other pre- and post-production factors, actual vehicle, materials and specifications may vary from this brochure. Some vehicles shown with optional equipment. See the actual vehicle for complete accuracy. Availability and delivery times for particular models or equipment may vary. Specifications, options and accessories may differ in Hawaii, U.S. territories and other countries. For additional information on availability, options and accessories, see your Nissan dealer or contact Nissan North America, Inc.

And sign up for the latest news and updates on the 2014 Nissan 370Z.®

or visit [NissanUSA.com/z](http://NissanUSA.com/z)

Los folletos de Nissan también están disponibles en español.

Para descargar el PDF, visita:

[NissanUSA.com/folletos-espanol](http://NissanUSA.com/folletos-espanol)

And follow Nissan on: