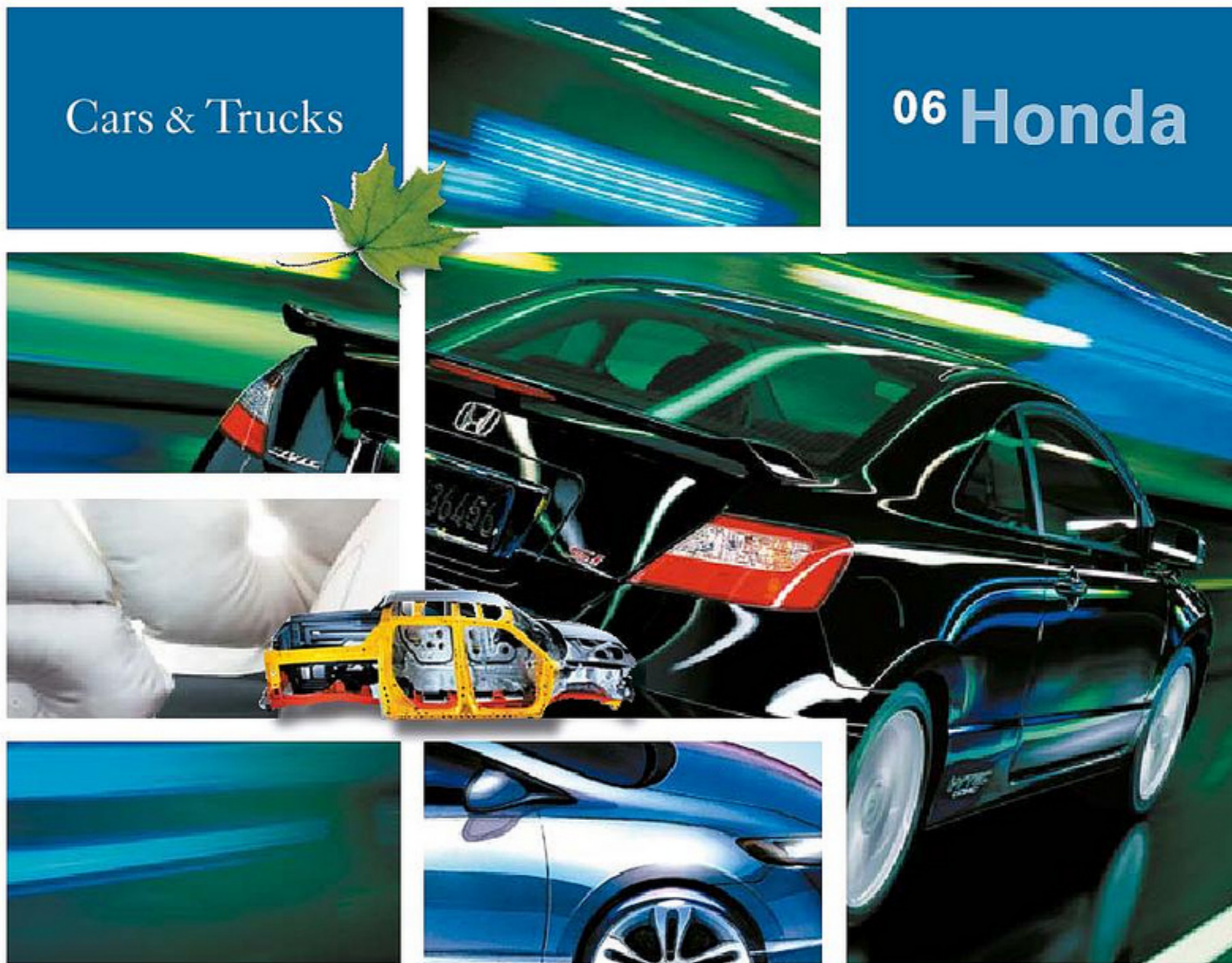


Cars & Trucks

06 Honda



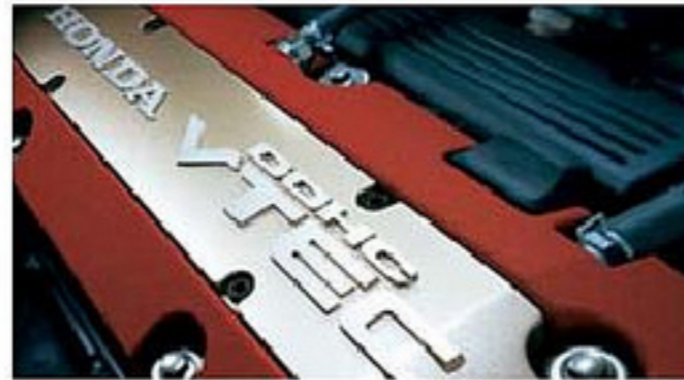


It's been fun from Day One.

For almost 60 years, Honda has been listening carefully to understand what people want. But we already knew that people need to enjoy themselves. So it's always been a Honda core value to make getting where you're going more fun. And it's a standard feature you'll appreciate every time you take the wheel of a Honda car or truck.



You can even rule the waves on a Honda.



Honda builds more engines than anyone else.

Soichiro Honda founds
Honda Motor Co.

1948



Honda becomes the leader in
Japanese motorcycle production

1955

Honda introduces the Super Cub

1958



American Honda Motor Co.
is established

1959



Honda stuns the racing world, taking
the 125cc and 250cc championships at
the Isle of Man TT

1961



Honda builds its first
production car, the S500

1963

Honda begins automobile
racing in Formula 1

1964





First F-1 win, at Mexican Grand Prix



1965

Honda sells its 1,000,000th motorcycle in the U.S.

Honda rocks the status quo, unveiling the 4-cylinder CB750 streetbike



1968

1969

First Honda car arrives in the U.S., the N600



1970

Revolutionary CVCC engine complies with tough Clean Air Act without using catalytic converter



1974



In the first-ever EPA fuel-economy rankings, Civic comes out on top

1977

Honda begins assembling motorcycles in U.S.



1979

First Honda automobiles are assembled in U.S.



1982

Honda returns to Formula 1 racing

1983

Honda R&D Americas opens in Torrance, CA



1984



There's never been an In-Bed Trunk™—until now.



Honda, GE team to market our jet engine.



We love going back to the drawing board.

This job is a dream.

Honda is in the business of inventing the future. So our engineers are encouraged to swing for the technological fences, dreaming up things like the world's most advanced humanoid robot, ASIMO. Or a mini 4-stroke gasoline engine that weighs only 6 lbs. We believe ingenious thinking can make great things possible.



Honda-powered Formula 1 cars win the Constructor's Championship — the first of six consecutive titles

1987



Soichiro Honda is inducted into Detroit's Automotive Hall of Fame

1989

American Honda exports its 100,000th U.S.-assembled automobile

1992

Honda wins the World Solar Challenge race across Australia

1993

The Honda Accord becomes North America's number-one export model

1994

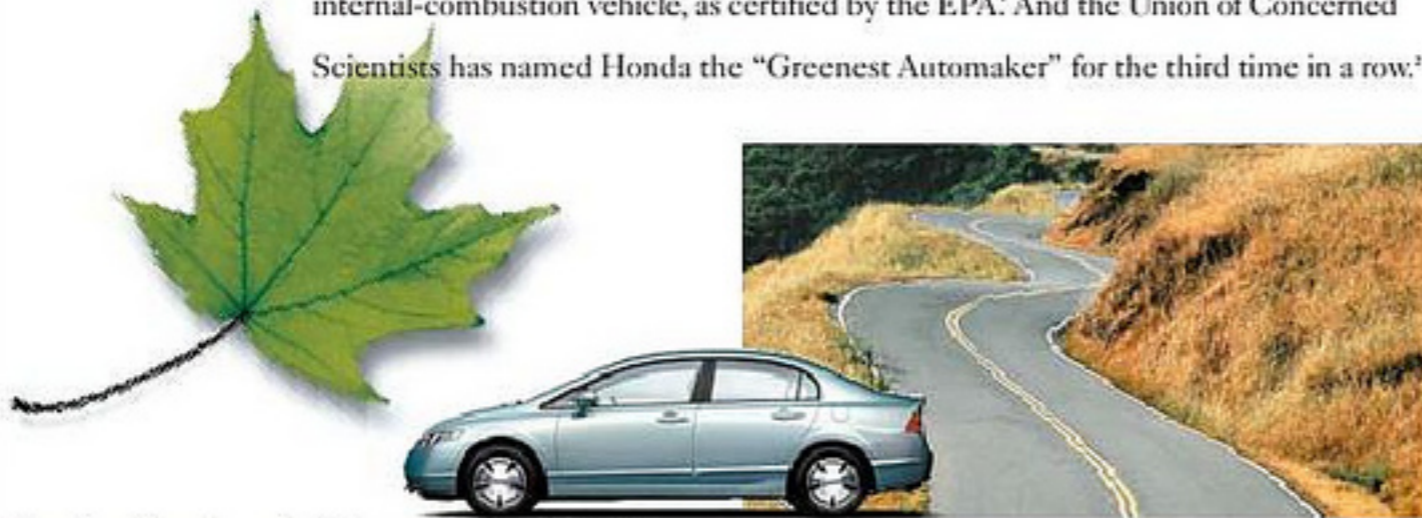


For Adopt-a-Planet, we chose Earth.

Our environmental record is unmatched. Honda has always been first to meet California's stringent emissions regulations. Our natural-gas Civic GX is the cleanest internal-combustion vehicle, as certified by the EPA! And the Union of Concerned Scientists has named Honda the "Greenest Automaker" for the third time in a row.*



High mileage meets high performance.



Honda offers Accord, Civic and Insight hybrids.



Odyssey is introduced—with the world's first Magic Seat™

1994

Honda becomes the first maker to develop a production ULEV engine



1995

Honda announces research project into turbojet engines for small aircraft



1997

ULEV Accord sales begin in California

EV Plus electric car is launched

The Civic GX natural-gas vehicle goes into production in Ohio

1998



Honda fuel-cell prototype vehicles are introduced

1999

The Insight becomes the first gasoline-electric hybrid sold in the U.S.

1999



Honda opens the world's first indoor all-directional vehicle-to-vehicle crash-test facility in Tochigi, Japan

2000

Honda Accord becomes the first SULEV on the market

Honda earns its 6th consecutive CART Driver's Championship

Honda introduces the humanoid robot ASIMO

Civic Coupe becomes the first small car to earn NHTSA 5-star crash ratings in both frontal- and side-impact testing



The Civic GX becomes the first car certified as PZEV

2001

Honda introduces the first mass-market hybrid, the Civic Hybrid

2002





Front airbags inflate and deflate in a fraction of a second.



The Honda FCX becomes the first fuel-cell vehicle ever to earn certification from the EPA and CARB

2002



Honda celebrates 25 years of listing on the New York Stock Exchange

2002

Honda introduces the AquaTear, the company's first personal watercraft

2002



Honda assembles its 10,000,000th vehicle in the U.S.

2003

Honda has over 25,000 American associates

Four out of five Honda vehicles sold in the U.S. are assembled in North America, with the help of over 550 U.S. suppliers

Honda takes the top seven places at the Indispolo 1500

2004



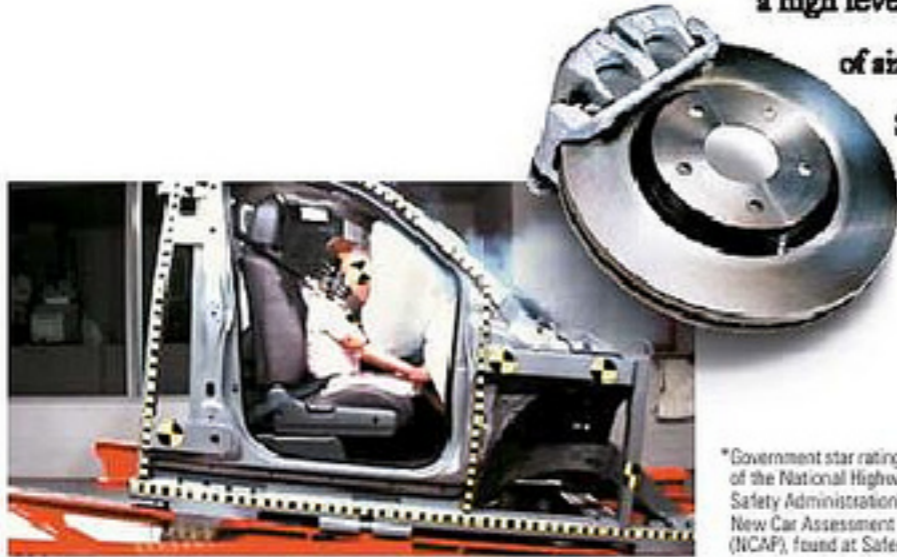


Honda is achieving stellar crash-test results.

We're making Safety for Everyone.

Through a comprehensive and evolving approach to safety, Honda seeks to provide a **high level** of occupant and pedestrian protection in our cars and trucks, regardless of **size** or price, as well as increased crash compatibility with other vehicles.

Several Honda models have earned the NHTSA's 5-star crash-test rating.*



*Government star ratings are part of the National Highway Traffic Safety Administration's (NHTSA) New Car Assessment Program (NCAP), found at Safercar.gov.



We build in safety from the ground up.



Honda wins the Indy Racing League Manufacturer's Championship

Five Honda models earn 5-star ratings from NHTSA, far more than any other brand

Honda unveils its Safety for Everyone initiative

2004

Honda introduces the Ridgeline



2005

Civic Sedan



The two-tier instrument panel is user-friendlier.



Advanced style distinguishes a spacious cabin.



Civic EX Sedan shown in Galaxy Gray Metallic.*

This is no time to stand still – the totally new 2006 Honda Civic Sedan is here to take you to the next level. It delivers more power while using less fuel.[†] Handling is quicker and more precise thanks to its re-engineered steering and suspension systems. Its sophisticated aerodynamic shape slips through the wind, and it boasts the latest in Honda safety technology. And you can even get the available Honda Satellite-Linked Navigation System™* with Voice Recognition to help you keep the good times on course.

Engineering

148-hp (SAE net, Rev B/D4)[†] 1.8-Liter, 16-Valve i-VTEC®
4-Cylinder Engine
5-Speed Manual Transmission
Available 5-Speed Automatic Transmission
Direct Ignition with Immobilizer Theft-Deterrent System
100,000-Miles-or-More Tune-Up Interval[‡]

Safety

Front, Side and Side Curtain Airbags
Active Head Restraints
Driver's and Front Passenger's Seat Belt Reminder
Anti-Lock Braking System (ABS)
Electronic Brake Distribution (EBD)
Daytime Running Lights (DRL)

Comfort & Convenience

Tilt and Telescopic Steering Column
Two-Tier Instrument Panel
160-Watt AM/FM/XM Ready™[†] iCD Audio System (EX)
MP3/Windos Media™ Audio[†] (WMA) Playback Capability (LX, EX)
Air Conditioning with Air-Filtration System (LX, EX)
Power Door Locks, Mirrors and Windows (LX, EX)
Security System/Remote Entry System (LX, EX)
MP3/Auxiliary Input Jack (EX)
Steering Wheel-Mounted Audio Controls (EX)
One-Touch Power Moonroof with Tilt Feature (EX)
Available Honda Satellite-Linked Navigation System™* with
Voice Recognition and Digital Audio-Card Reader (EX)

Exterior/Interior Colors

Alabaster Silver Metallic/Gray
Atomic Blue Metallic/Gray
Galaxy Gray Metallic*/Gray
Nighthawk Black Pearl/Ivory (LX, EX)
Royal Blue Pearl/Gray (DX) Gray or Ivory (LX, EX)
Shoreline Mist Metallic/Ivory (LX, EX)
Taffeta White/Gray (DX) Ivory (LX, EX)
Tango Red Pearl*/Ivory (LX, EX)

EPA Mileage Estimates

5-Speed MT (City/Highway)[‡]: 30/38
5-Speed AT (City/Highway)[‡]: 30/40

*Available fall 2005. †Horsepower and torque calculations reflect new SAE J1349 procedures revised August, 2004.

Engineering

140-hp (SAE net, Rev B/04)* 1.8-Liter, 16-Valve i-VTEC[®]
4-Cylinder Engine
5-Speed Manual Transmission
Available 5-Speed Automatic Transmission
Direct Ignition with Immobilizer Theft-Deterrent System
100,000-Miles-or-More Tune-Up Interval[†]

Safety

Front, Side and Side Curtain Airbags
Active Head Restraints
Driver's and Front Passenger's Seat Belt Reminder
Anti-Lock Braking System (ABS)
Electronic Brake Distribution (EBD)
Daytime Running Lights (DRL)

Comfort & Convenience

Tilt and Telescopic Steering Column
Two-Tier Instrument Panel
160-Watt AM/FM/CD Audio System (LX)
MP3/Windows Media™ Audio² (WMA) Playback Capability (LX, EX)
MP3/Auxiliary Input Jack (LX, EX)
Air Conditioning with Air-Filtration System (LX, EX)
Power Door Locks, Mirrors and Windows (LX, EX)
Security System/Remote Entry System (LX, EX)
350-Watt AM/FM/XM Ready™/CD Premium Audio System
with 7 Speakers, Including Subwoofer (EX)
Steering Wheel-Mounted Audio Controls (EX)
One-Touch Power Moonroof with Tilt Feature (EX)
Available Honda Satellite-Linked Navigation System™⁴
with Voice Recognition, Digital Audio-Card Reader
and XM[®] Satellite Radio⁵ (EX)

Exterior/Interior Colors

Alabaster Silver Metallic/Gray (DX, LX) Black (EX)
Atomic Blue Metallic/Gray (LX, EX)
Galaxy Gray Metallic/Gray (LX, EX)
Nighthawk Black Pearl/Ivory (LX, EX)
Rallye Red⁷/Black (EX)
Royal Blue Pearl⁷/Gray (DX) Ivory (LX, EX)
Taffeta White/Gray (DX) Ivory (LX, EX)

EPA Mileage Estimates

5-Speed MT (City/Highway)⁸: 30/38
5-Speed AT (City/Highway)⁸: 30/40

*Horsepower and torque calculations reflect new SAE J1349
procedures revised August, 2004. [†]Available early 2005.

Why wait for tomorrow when you can hit fast-forward? That's what it's like slipping inside the all-new '06 Civic Coupe. Just one look tells you this is the shape of things to come—leading-edge style backed up with bigger power, sharper handling, sophisticated safety and more high-tech than ever seen in a Civic. In fact, you can have yours with the available Honda Satellite-Linked Navigation System⁴ with Voice Recognition to help point you to where the fun is. So welcome to tomorrow—you're going to like it here.



Civic EX Coupe shown in Galaxy Gray Metallic.

Here's where the exhilaration sinks in.

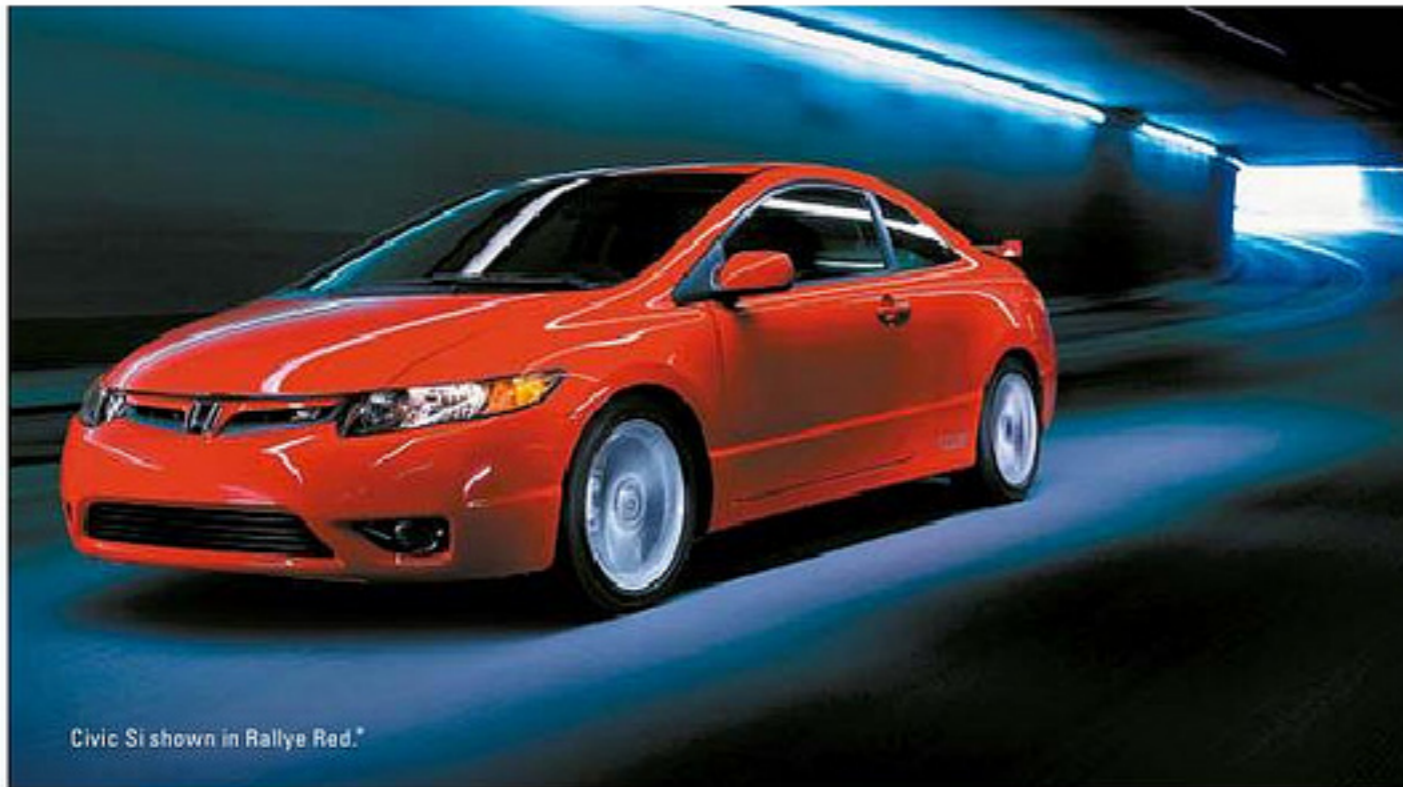


Drive coast to coast and never refold a map.



Civic Coupe

Speak those two little letters—Si—and you’ve said a mouthful. The 2006 Civic Si is all-new and loaded with the performance equipment befitting the king of sport compacts. The Si’s 197-horsepower rush comes from the latest member of the legendary K20 engine family, with 11:1 compression and an 8000-rpm redline. And the retuned, re-engineered and retweaked suspension is ready to generate big G-forces. So if you’re ready to rule, wrap yourself in those bucket seats and find out what the deep bolsters are for.



Civic Si shown in Rallye Red.*

Engineering

197-hp (SAE net, Rev 8/04),[†] 2.0-Liter, 16-Valve, DOHC i-VTEC[®]
 4-Cylinder Engine
 Close-Ratio 6-Speed Manual Transmission
 Helical Limited-Slip Differential
 Stainless Steel Exhaust Manifold
 Direct Ignition with Immobilizer Theft-Deterrent System
 17-Inch Alloy Wheels with P215/45 R17 V-Rated Tires
 Available Michelin[®] Pilot[™] Exalto[™] PE2[™] Summer Tires
 100,000-Miles-or-More Tune-Up Interval[‡]

Safety

Front, Side and Side Curtain Airbags
 Active Head Restraints
 Driver's and Front Passenger's Seat Belt Reminder
 Anti-Lock Braking System (ABS)
 Electronic Brake Distribution (EBD)
 Daytime Running Lights (DRL)

Comfort & Convenience

350-Watt AM/FM/XM Ready[™] 5/CD Premium Audio System
 with 7 Speakers, Including Subwoofer
 MP3/Windows Media[™] Audio[®] (WMA) Playback Capability
 MP3/Auxiliary Input Jack
 Body-Colored Rear Wing Spoiler
 Perforated Leather-Wrapped Steering Wheel
 Aluminum Shift Knob with Leather
 Textured Aluminum Pedals
 Red Ambient Console Lighting
 Red Backlit Gauges
 Available Honda Satellite-Linked Navigation System[™] with
 Voice Recognition, Digital Audio-Card Reader and XM[®] Satel-
 lite Radio[§]

Exterior/Interior Colors

Alabaster Silver Metallic/Black
 Fiji Blue Pearl/Black
 Galaxy Gray Metallic/Black
 Habanero Red Pearl/Black
 Nighthawk Black Pearl/Black
 Rallye Red^{*}/Black
 Taffeta White/Black

EPA Mileage Estimates[§]

6-Speed Manual Transmission (City/Highway): 22/31

^{*}Available early 2005. [†]Horsepower and torque calculations reflect new SAE J1349 procedures revised August, 2004. [‡]Si available winter 2005.

When you're in here, high performance reigns.



The new Si kicks out nearly 100 horses per liter.





The CVT delivers automatic ease, stick response.



Big mileage without big sacrifice? Here's proof.



Engineering

110-hp (SAE net, Rev 8/04)* 1.3-Liter i-VTEC[®] 4-Cylinder Engine with Integrated Motor Assist (IMA)[™]
 Continuously Variable Transmission (CVT)
 Permanent Magnet Motor/Nickel-Metal Hydride (Ni-MH) Battery
 Dual-Point Sequential (DSE) Ignition System with Immobilizer
 100,000-Miles-or-More Tune-Up Interval[†]

Safety

Front, Side and Side Curtain Airbags
 Active Head Restraints
 Driver's and Front Passenger's Seat Belt Reminder
 Anti-Lock Braking System (ABS)
 Electronic Brake Distribution (EBD)
 Brake Assist
 Daytime Running Lights (DRL)

Comfort & Convenience

Tilt and Telescopic Steering Column
 Two-Tier Instrument Panel
 Blue Backlit Gauges with IMA Charge and Assist Indicators
 Driver's Seat with Manual Height Adjustment
 150-Watt AM/FM/XM Ready[™] CD Audio System with 6 Speakers
 Automatic Climate Control System
 Power Door Locks, Mirrors and Windows
 Cruise Control
 Security System/Remote Entry System
 MP3/Auxiliary Input Jack
 Steering Wheel-Mounted Audio Controls
 Center Console with Sliding Armrest and Storage Compartment
 Average Fuel Consumption Indicator
 Available Honda Satellite-Linked Navigation System[™] with Voice Recognition and Digital Audio-Card Reader

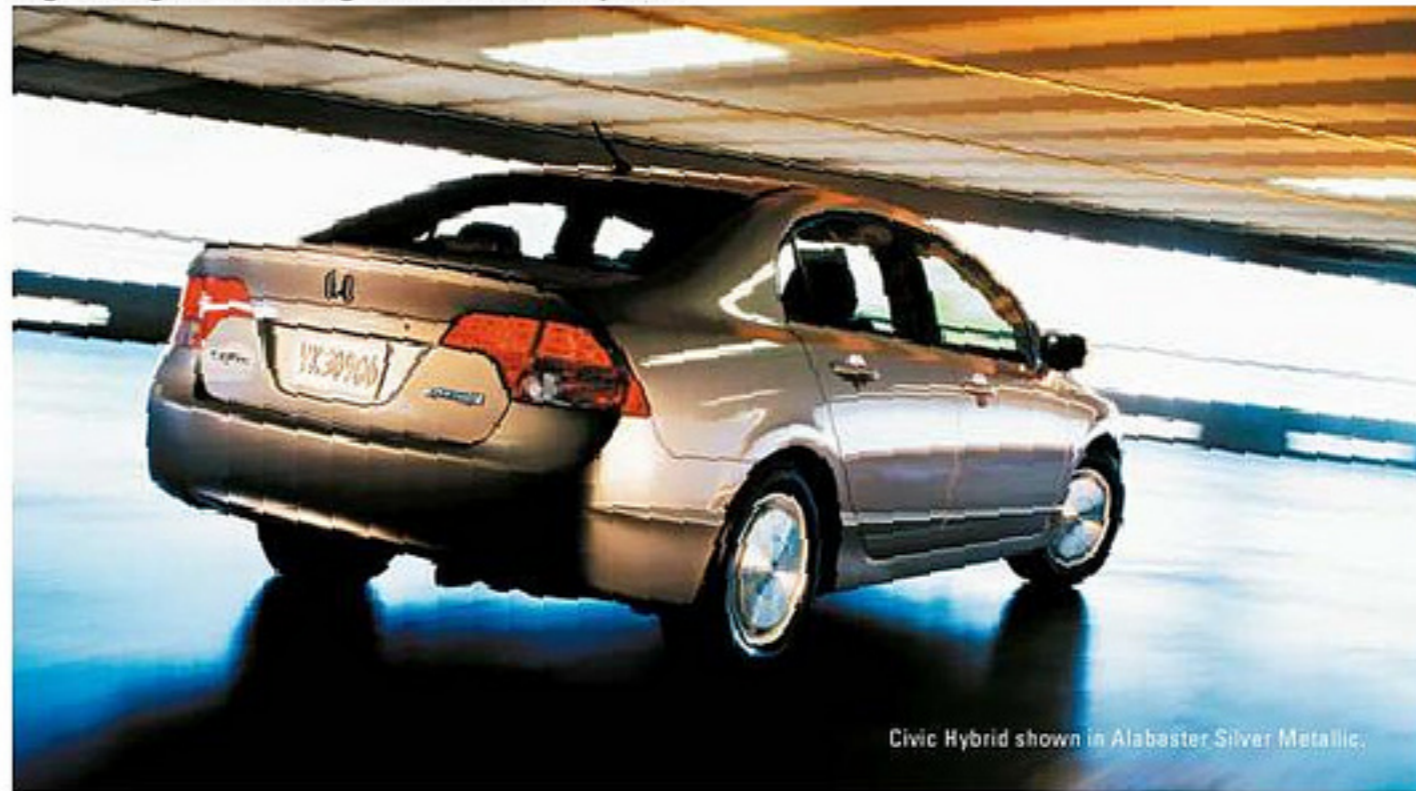
Exterior/Interior Colors

Alabaster Silver Metallic/Blue
 Galaxy Gray Metallic[†]/Ivory
 Magnetic Pearl/Blue
 Opal Silver Blue Metallic/Ivory
 Taffeta White/Ivory

EPA Mileage Estimates[‡]

CVT (City/Highway): 50/50

*Horsepower and torque calculations reflect new SAE J1349 procedures revised August, 2004. †Available fall 2005.



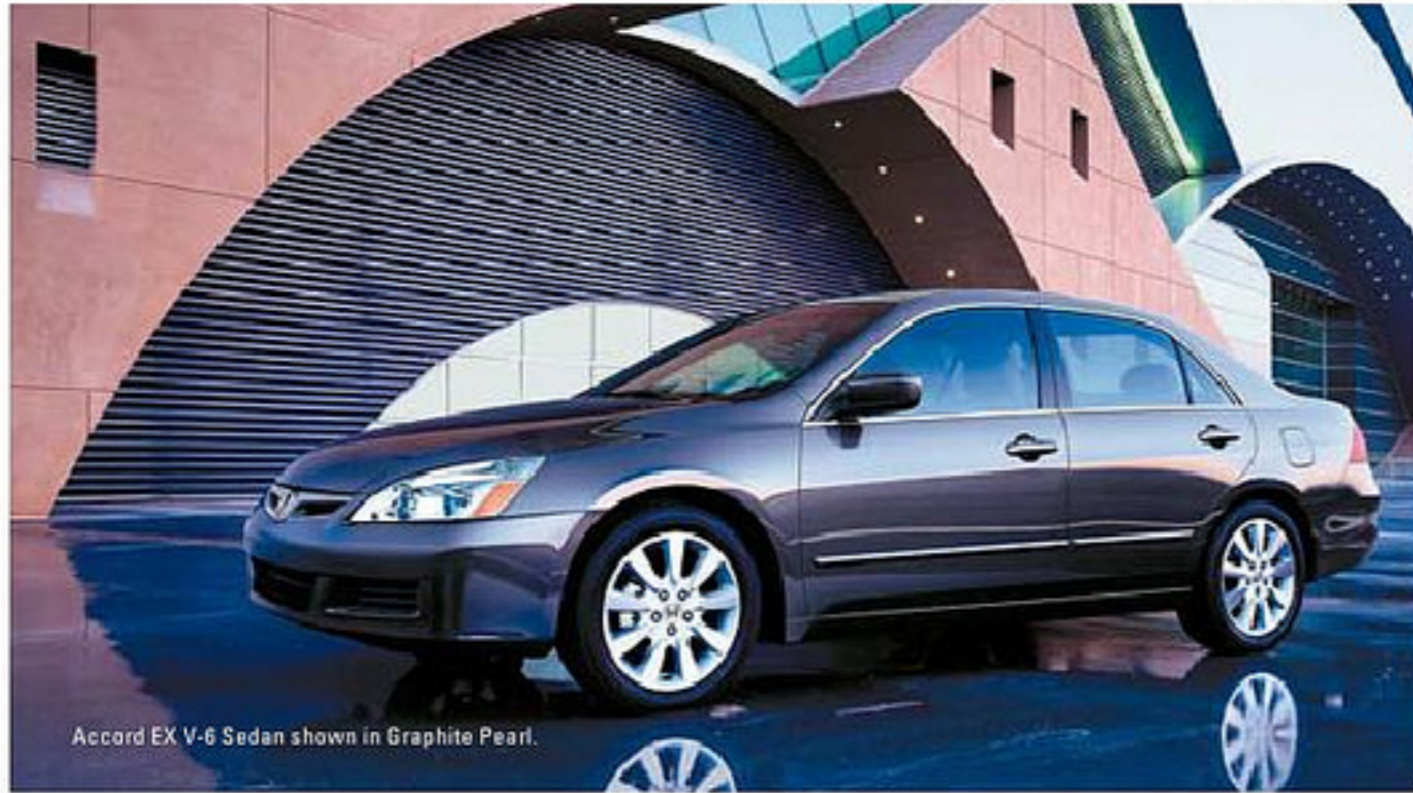
Civic Hybrid shown in Alabaster Silver Metallic.

Smart thinking meets smart style in the new 2006 Civic Hybrid. Its refined gasoline-electric powertrain helps you pocket plenty of fuel savings—with up to 50 mpg[‡] during city driving. The air enjoys its status as an Advanced Technology Partial Zero-Emission Vehicle[‡] (AT-PZEV), the most stringent U.S. standard achieved by a gasoline-powered vehicle. You get top-flight looks, spirited performance, roomy comfort and first-class convenience. And you never plug it in. Once again, Honda makes the impossible look easy.

Accord Sedan



Leather and satellite navigation* are available.



Accord EX V-6 Sedan shown in Graphite Pearl.

Applause from automotive experts and car lovers only encourages us to keep making the Accord better. Even though *Car and Driver* placed Accord on its "10Best" Cars list for the 19th time in '05,¹ we aim to top that for 2006. Styling has been significantly refreshed inside and out. Every model has more horsepower, numerous refinements and added features. And for sporting drivers, there's now an Accord EX V-6 Sedan available with a 6-speed manual transmission. So your unwillingness to compromise is hereby rewarded.

Engineering

155-hp (SAE net, Rev 8/04),² 2.4-Liter, 16-Valve, DOHC i-VTEC[®] 4-Cylinder Engine
244-hp (SAE net, Rev 8/04),² 3.0-Liter, 24-Valve, SOHC VTEC[®] V-6 Engine
5-Speed Manual Transmission (VP, LX, EX)
5-Speed Automatic Transmission (LX V-6, EX V-6)
Close-Ratio 6-Speed Manual Transmission (EX V-6 6-Speed)
Available 5-Speed Automatic Transmission (VP, LX, EX)
100,000-Miles-or-More Tune-Up Interval³

Safety

Front, Side and Side Curtain Airbags
Driver's and Front Passenger's Seat Belt Reminder
Daytime Running Lights (DRL)
Anti-Lock Braking System (ABS)
Electronic Brake Distribution (EBD) (LX SE, EX, V-6 models)
Vehicle Stability Assist (VSA[™]) with Traction Control (V-6 models)
Brake Assist (V-6 models)

Comfort & Convenience

Tilt and Telescopic Steering Column
Power Windows with Auto-Up/Down Driver's Window
Power Door Locks/Cruise Control
Remote Entry System with Power Window Control
LED Taillights
Air Conditioning with Air-Filtration System (VP, LX, EX, LX V-6)
Illuminated Steering Wheel-Mounted Controls
120-Watt AM/FM/CD Audio System (VP, LX)
Power Moonroof with Tilt Feature (EX, V-6 models)
Aluminum Shift Knob with Leather (EX V-6 5-Speed)
Ambient Console Lighting (all EX models)
Premium Interior Accents (EX, EX V-6)
Carbon-Fiber-Look Interior Accents (LX SE, EX V-6 6-Speed)
120-Watt AM/FM/6-Disc In-Dash CD Changer Audio System (LX SE, EX, V-6 models)
HomeLink[®] Remote System¹¹ (EX V-6, EX V-6 6-Speed)
Dual-Zone Automatic Climate Control System (leather-trimmed models)
XM[®] Satellite Radio² (leather-trimmed models)
Leather-Wrapped Steering Wheel (leather-trimmed models)
180-Watt AM/FM/6-Disc In-Dash CD Changer Premium Audio System (EX V-6 6-Speed)
Available Honda Satellite-Linked Navigation System^{™4} with Voice Recognition (leather-trimmed models)

Exterior/Interior Colors

Alabaster Silver Metallic/Black
Carbon Bronze Pearl/Ivory or Black (EX, EX V-6, EX V-6 6MT)
Desert Mist Metallic/Ivory (VP, LX, EX, LX V-6, EX V-6 5AT)
Graphite Pearl/Gray (LX, LX SE, EX, LX V-6, EX V-6, EX V-6 6MT)
Nighthawk Black Pearl/Ivory (LX, LX SE, EX, LX V-6, EX V-6, EX V-6 6MT)
Redondo Red Pearl/Gray (LX SE, EX, LX V-6, EX V-6, EX V-6 6MT)
Royal Blue Pearl/Gray (VP, LX, LX SE, EX, LX V-6)
Sapphire Blue Pearl/Black (EX V-6, EX V-6 6MT)
Taffeta White/Ivory

EPA Mileage Estimates⁵

5-Speed MT (City/Highway): 26/34 (VP, LX, EX)
5-Speed AT (City/Highway): 24/34 (VP, LX, EX)
5-Speed AT (City/Highway): 20/29 (LX V-6, EX V-6)
6-Speed MT (City/Highway): 21/30 (EX V-6 6-Speed)

¹Horsepower and torque calculations reflect new SAE J1349 procedures revised August, 2004.

Engineering

165-hp (SAE net, Rev 8/04)* 2.4-Liter, 16-Valve, DOHC i-VTEC[†]
4-Cylinder Engine
244-hp (SAE net, Rev 8/04)* 3.0-Liter, 24-Valve, SOHC VTEC[†]
V-6 Engine
5-Speed Manual Transmission (LX, EX)
5-Speed Automatic Transmission (LX V-6, EX V-6)
Close-Ratio 6-Speed Manual Transmission (EX V-6 6-Speed)
Available 5-Speed Automatic Transmission (LX, EX)
100,000-Miles-or-More Tune-Up Interval[‡]

Safety

Front, Side and Side Curtain Airbags
Driver's and Front Passenger's Seat Belt Reminder
Daytime Running Lights (DRL)
Anti-Lock Braking System (ABS)
Electronic Brake Distribution (EBD) (EX, V-6 models)
Vehicle Stability Assist (VSA[®]) with Traction Control (V-6 models)
Brake Assist (V-6 models)

Comfort & Convenience

Tilt and Telescopic Steering Column
Power Windows with Auto-Up/Down Driver's Window
Power Door Locks/Cruise Control
Remote Entry System with Power Window Control
Map Lights
LED Taillights
Air Conditioning with Air-Filtration System (LX, EX, LX V-6)
Illuminated Steering Wheel-Mounted Controls
Power Moonroof with Tilt Feature (EX, V-6 models)
Aluminum Shift Knob with Leather (EX V-6 6-Speed)
Ambient Console Lighting (all EX models)
Premium Interior Accents (EX, EX V-6)
Carbon-Fiber-Look Interior Accents (EX V-6 6-Speed)
120-Watt AM/FM/6-Disc In-Dash CD Changer Audio System
(EX, LX V-6, EX V-6)
HomeLink[®] Remote System^{††} (EX V-6, EX V-6 6-Speed)
Dual-Zone Automatic Climate Control System
(leather-trimmed models)
XM[®] Satellite Radio[†] (leather-trimmed models)
Leather-Wrapped Steering Wheel (leather-trimmed models)
180-Watt AM/FM/6-Disc In-Dash CD Changer Premium
Audio System (EX V-6 6-Speed)
Available Honda Satellite-Linked Navigation System^{™††}
with Voice Recognition (leather-trimmed models)

Exterior/Interior Colors

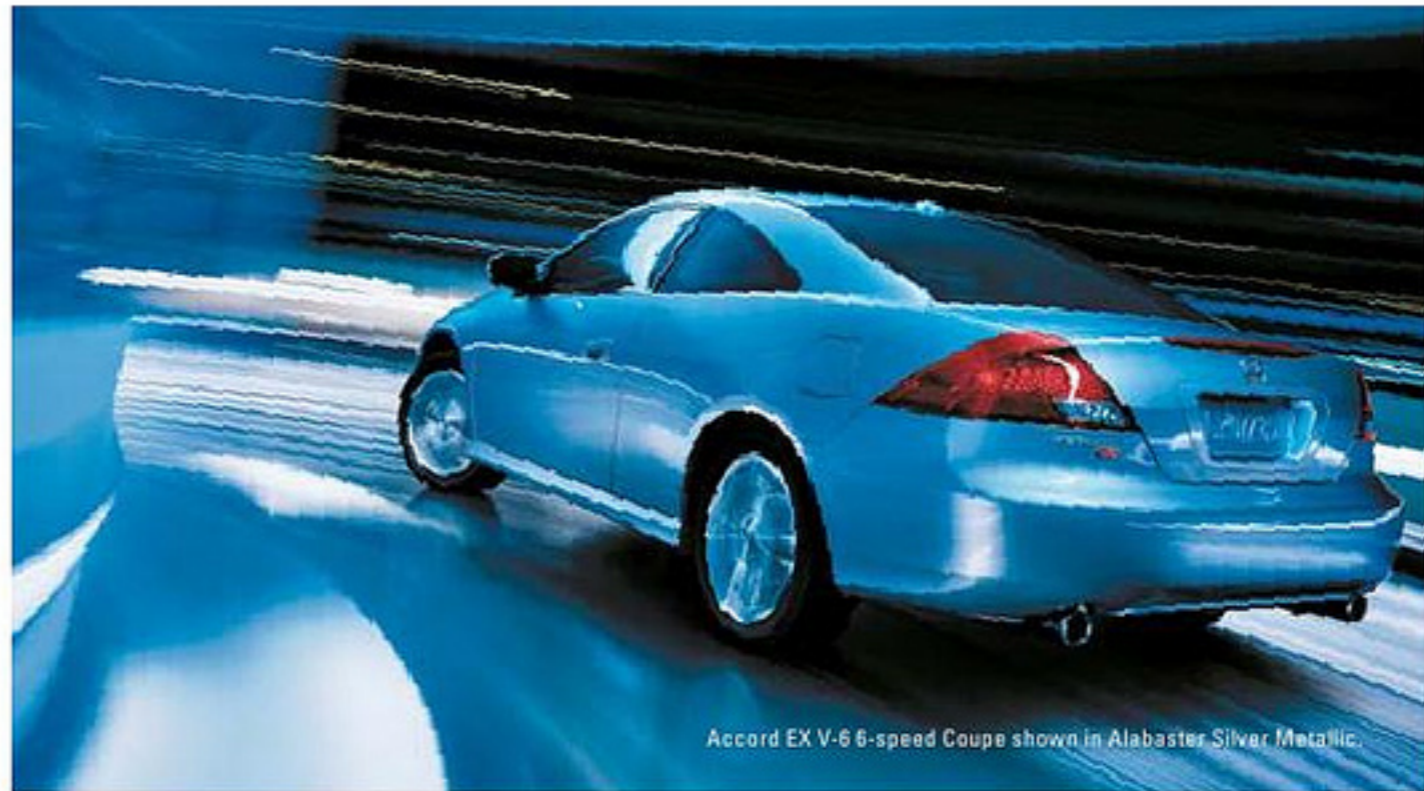
Alabaster Silver Metallic/Gray or Black
Cool Blue Metallic[†]/Black (EX, LX V-6, EX V-6)
Desert Mist Metallic/Ivory (EX, EX V-6 SAT)
Graphite Pearl/Gray or Black
Nighthawk Black Pearl/Black
San Marino Red/Ivory
Sapphire Blue Pearl/Ivory
Taffeta White/Ivory

EPA Mileage Estimates[‡]

5-Speed MT (City/Highway): 26/34 (LX, EX)
5-Speed AT (City/Highway): 24/34 (LX, EX)
5-Speed AT (City/Highway): 20/29 (LX V-6, EX V-6)
6-Speed MT (City/Highway): 21/30 (EX V-6 6-Speed)

*Horsepower and torque calculations reflect new SAE J1349 procedures revised August, 2004. †Available early 2005.

The Accord Coupe has always had it all, striking the perfect balance between flat-out fun, cutting-edge technology and everyday luxury. So it was a challenge finding ways to make it even more desirable—but we did. Accord V-6 models now have standard Vehicle Stability Assist (VSA[®]). Every 2006 Accord Coupe features a more powerful engine and sportier exterior and interior styling. And as ever, it's everything people love about Honda's take on exhilarating two-door performance. For '06, we just turned up the heat.



Accord EX V-6 6-speed Coupe shown in Alabaster Silver Metallic.

How to take comfort in high performance.



Accord Coupe

Yes, hybrids are about great fuel economy and ultra-low emissions. But with the 2006 Accord Hybrid, it's also about scintillating high performance. Because along with its exceptional 37-mpg¹ highway rating, this Hybrid puts 253 horsepower to work making your driving a lot more enjoyable. Luxurious comforts and conveniences include supple leather trim and automatic climate control. And new for 2006 is a power moonroof to bring sunny skies or starry nights inside. Leave it to Honda to make social responsibility fun.



Accord Hybrid shown in Silver Frost Metallic.

Accord Hybrid



Engineering

253-hp (SAE net, Rev 8/04)* 3.0-Liter, 24-Valve, SOHC i-VTEC[®] V-6 Engine with Integrated Motor Assist (IMA[™])
 Compact 5-Speed Automatic Transmission
 Permanent Magnet Motor
 Nickel-Metal Hydride (Ni-MH) Battery
 Variable Cylinder Management[™] (VCM[™])
 AT-PZEV Emissions Rating (CARB)
 Drive-by-Wire Throttle System[™]
 Double Wishbone Front Suspension
 Five-Link Double Wishbone Rear Suspension
 Electric Power-Assisted Rack-and-Pinion Steering (EPS)
 100,000-Miles-or-More Tune-Up Interval²

Safety

Front, Side and Side Curtain Airbags
 Driver's and Front Passenger's Seat Belt Reminder
 Daytime Running Lights (DRL)
 Anti-Lock Braking System (ABS)
 Electronic Brake Distribution (EBD)
 Vehicle Stability Assist (VSA[®]) with Traction Control
 Brake Assist

Comfort & Convenience

Tilt and Telescopic Steering Column
 Power Windows with Auto-Up/Down Driver's Window
 Power Door Locks
 Cruise Control
 Remote Entry System with Power Window Control
 Chrome Exhaust Finisher
 Maintenance Minder System
 LED Taillights
 Illuminated Steering Wheel-Mounted Controls
 Dual-Zone Hybrid Automatic Climate Control System
 Map Lights
 Sunglasses Holder
 Power Moonroof with Tilt Feature
 Ambient Console Lighting
 Premium Interior Accents
 120-Watt AM/FM/6-Disc In-Dash CD Changer Audio System with 6 Speakers
 Body-Colored Power Side Mirrors with Integrated Turn Indicators
 HomeLink[®] Remote System³
 XM[®] Satellite Radio⁴
 Leather-Wrapped Steering Wheel
 Leather-Trimmed Seats and Door-Panel Inserts
 Heated Front Seats
 Driver's Seat with 8-Way Power Adjustment
 Center Console with Sliding Armrest and Storage Compartments
 Beverage Holders, Front and Rear (8 total)
 IMA Charge and Assist Indicators
 Available Honda Satellite-Linked Navigation System^{™4} with Voice Recognition

Exterior/Interior Colors

Desert Mist Metallic/Ivory
 Graphite Pearl/Gray
 Premium White Pearl/Ivory
 Redondo Red Pearl/Gray
 Silver Frost Metallic/Gray

EPA Mileage Estimates¹

5-Speed AT (City/Highway): 29/37

*Horsepower and torque calculations reflect new SAE J1349 procedures revised August, 2004.

Engineering

1.8-Liter VTEC[®] 3-Cylinder Engine
with Integrated Motor Assist (IMA[™])
5-Speed Manual Transmission
Available Continuously Variable Transmission (CVT)
Permanent Magnet Motor
Nickel-Metal Hydride (Ni-MH) Battery
Direct Ignition with Immobilizer Theft-Deterrent System
Rigid Aluminum-Body Construction
Electric Power-Assisted Rack-and-Pinion Steering (EPS)
105,000-Mile Tune-Up Interval²

Safety

Anti-Lock Braking System (ABS)
Dual Front Airbags (SRS)

Comfort & Convenience

Body-Colored Power Side Mirrors
Impact-Absorbing Body-Colored Bumpers
Aerodynamic Rear Fender Skirts
Heat-Rejecting Green-Tinted Glass
2-Speed Intermittent Windshield Wipers
Rear Window Wiper/Washer
Roof-Mounted Antenna
Lightweight Alloy Wheels
Automatic Climate Control with Air-Filtration System (CVT)
Power Windows with Auto-Down Driver's Window
Power Door Locks
Beverage Holders
Lockable Glove Compartment
Passenger-Side Seatback Pocket
Rear Center Net-Pocket
Rear Hidden Storage Well
12-Volt Power Outlet
Remote Fuel Filler Door Release
Map Lights
Driver's Vanity Mirror
Headlights-On Reminder
Rear Window Defroster with Timer
Cargo Area Light
Reclining High-Back Bucket Seats
AM/FM/CD Audio System with 4 Speakers and Clock
Electronic Instrument Display
Tachometer
Idle-Stop Indicator
Maintenance Interval Indicator
Digital Odometer and Digital Trip Meters (2)
Digital Fuel-Mileage Indicators
IMA Charge and Assist Indicators
Ecosomy Shift Indicator (MT only)
Battery Charge Indicator
Illuminated Ignition Switch

Exterior/Interior Colors

Navy Blue Pearl/Beige
New Formula Red/Beige
Silverstone Metallic/Beige

EPA Mileage Estimates²

5-Speed MT (City/Highway): 60/66
CVT (City/Highway): 51/56



Distinctive style from every angle.



Insight shown in New Formula Red.

Insight was the first gasoline-electric hybrid in America. And it's still the U.S. mileage champion—66 mpg highway,^{2,3} according to the EPA. Like all Honda hybrids, it recharges its own batteries, so you can cover vast distances without stopping. In addition to being applauded by environmental groups for its mileage, ultra-low emissions and innovation, Insight still has all the core values of every Honda—it's fun to drive, easy to look at and a pure pleasure to spend time in. So it's a model of efficiency you'll enjoy every day.

It wasn't merely "inspired" by racing. The Honda S2000 was developed on the high-speed straightaways, breathtaking sweepers and tight hairpins of Suzuka, site of the Japanese Grand Prix. By engineers who have worked to create Honda's extraordinary heritage of success in motorsports. Settle into the cockpit, run it up through the gears and probe the cornering limits—you'll have no problem discovering this sport machine's true genetic code. The S2000 is the link between world-beating performance—and you.



S2000 shown in Rio Yellow Pearl.

Its cockpit is designed to focus your senses.



Engineering

237-hp (SAE net, Rev 8/04)* 2.2-Liter, 16-Valve, DOHC VTEC[®]
4-Cylinder Engine
Close-Ratio 6-Speed Manual Transmission
Torque-Sensing Limited-Slip Differential
Direct Ignition with Immobilizer Theft-Deterrent System
High X-Bone Monocoque Frame
LEV-2 Emissions Rating (CARB)
Drive-by-Wire Throttle System™
Independent In-Wheel Double Wishbone Suspension
with Coil Springs
Electric Power-Assisted Rack-and-Pinion Steering (EPS)
100,000-Miles-or-More Tune-Up Interval[†]

Safety

Driver's and Passenger's Seat Belt Reminder
Daytime Running Lights (DRL)
Vehicle Stability Assist (VSA™) with Traction Control
Brake Assist
Anti-Lock Braking System (ABS)
Dual Front Airbags (SRS)

Comfort & Convenience

Electrically Powered Soft Top with Glass Rear Window
High-Intensity Discharge Headlights (HID)
Dual-Outlet Exhaust
Aluminum Hood
Engine Start Button
Air Conditioning with Air-Filtration System
Power Windows and Door Locks/Cruise Control
Leather-Wrapped Steering Wheel
Short-Throw Direct Shift Linkage
Aluminum Shift Knob with Leather
Textured Aluminum Pedals
Integrated Roll Bars
Aero Wind Screen (Rear Wind Deflector)
Remote-Operated Audio Controls
Center Console Storage Compartment with Lock
Beverage Holders (2)
Center-Floor Tunnel Net-Pocket
12-Volt Power Outlet
Map Lights
Driver's Seat with 4-Way Manual Adjustment
Leather-Trimmed Seats
AM/FM/XM Ready™ 5-CD Audio System with 8 Speakers,
Including 4 Integrated Roll Bar Speakers
Maintenance Minder System
Digital Instrument Panel with Clock
Tachometer
Exterior Temperature Indicator

Exterior/Interior Colors

Berlina Black/Black
Grand Prix White/Black
Laguna Blue Pearl/Black
New Formula Red/Black
Rio Yellow Pearl/Black
Sebring Silver Metallic/Black
Silverstone Metallic/Black or Red and Black
Suzuka Blue Metallic/Blue

EPA Mileage Estimates¹

6-Speed MT (City/Highway): 20/25

*Horsepower and torque calculations reflect new SAE J1349 procedures revised August, 2004.

Engineering

244-hp (SAE net, Rev 8/04)* 3.5-Liter, 24-Valve, SOHC VTEC™ V-6 Engine (LX, EX)
244-hp (SAE net, Rev 8/04)* 3.5-Liter, 24-Valve, SOHC I-VTEC™ V-6 Engine (EX-L, Touring)
Variable Cylinder Management™ (VCM™) (EX-L, Touring)
ULEV-2 Emissions Rating (CARB)
Drive-by-Wire Throttle System™
100,000-Miles-or-More Tune-Up Interval¹

Safety

Front, Side and Side Curtain Airbags with Rollover Sensor
Anti-Lock Braking System (ABS)
Electronic Brake Distribution (EBD)
Vehicle Stability Assist (VSA™) with Traction Control Brake Assist
Lower Anchors and Tethers for Children (LATCH)
Tire Pressure Monitoring System (TPMS) (Touring)
Michelin® PAX® System Run-Flat Technology¹³ (Touring)

Comfort & Convenience

One-Motion 60/40 Split 3rd-Row Magic Seat™
Electronic Cruise Control
In-Floor Storage (2nd-row) with Lazy Susan (all except LX)
Power Windows (front- and 2nd-row)
Power Sliding Doors (manual on LX)
120-Watt AM/FM/CD Audio System with 4 Speakers (LX)
120-Watt AM/FM/XM Ready™ 6-Disc In-Dash CD Changer Audio System with 6 Speakers (EX, EX-L)
Leather-Trimmed Interior (EX-L, Touring)
Driver's Seat with 8-Way Power Adjustment (EX, EX-L, Touring)
Stowable 2nd-Row PlusOne Seat™ (EX, EX-L)
Heated Front Seats (EX-L, Touring)
HomeLink™ Remote System™ (EX, EX-L, Touring)
Power Moonroof (EX-L, Touring)
Power Tailgate (Touring)
Tri-Zone Automatic Climate Control (Touring)
360-Watt AM/FM/6-Disc In-Dash CD Changer Premium Audio System with 7 Speakers (Touring)
Power Adjustable Pedals (Touring)
Removable 2nd-Row Center Console (Touring)
Available Honda Satellite-Linked Navigation System™ with Voice Recognition, Rearview Camera (EX-L, Touring)
Honda DVD Entertainment System (Touring, available EX-L)
XM® Satellite Radio® (EX-L with navigation,† Touring)

Exterior/Interior Colors

Desert Rock Metallic/Ivory
Midnight Blue Pearl/Gray
Nighthawk Black Pearl/Ivory (EX-L, Touring) Black (Touring)
Ocean Mist Metallic/Gray (EX, EX-L) Black (Touring)
Redrock Pearl/Ivory
Sage Brush Pearl/Olive or Ivory
Silver Pearl Metallic/Gray or Black (Touring)
Slate Green Metallic/Olive (EX, EX-L, Touring)
Slate Green Metallic/Gray (EX, EX-L) Black (Touring)
Taffeta White/Ivory

EPA Mileage Estimates²

5-Speed AT (City/Highway): 19/25 (LX, EX), 20/26 (EX-L, Touring)

¹Horsepower and torque calculations reflect new SAE J1349 procedures revised August, 2004.



Luxury meets roominess in the Touring model.

Odyssey



Odyssey Touring shown in Silver Pearl Metallic.

Odyssey rewrote the minivan rules when it first came out, and it's never looked back. Last year, with the introduction of the third-generation Odyssey, Honda raised the bar even higher. This rolling showcase of high technology, advanced safety and fun-to-drive performance is loaded with features to anticipate your needs and exceed your expectations. And it has received rousing applause from the critics, including 2005 Best Van among *Car and Driver's* "5Best" Trucks¹⁴ and "2005 All-Star for Minivan" from *AUTOMOBILE Magazine*.

CR-V



Glove-soft leather trims the Special Edition.



Wrap the features people need in a versatile and attractive package, and it's no surprise when it becomes a crowd favorite. *Consumer Guide*[®] named CR-V a Best Buy in the compact SUV[™] segment for 2005. And when that feature-loaded package offers fun-to-drive performance and up to 29 mpg[®] on the highway—all with legendary Honda dependability—it makes perfect sense for *Automotive Lease Guide* to give the CR-V their Compact SUV Residual Value Award[®] for 2005. So the only question is, what color would you like?

Engineering

155-hp (SAE net, Rev 8/04),^{*} 2.4-Liter, 16-Valve, DOHC i-VTEC[™] 4-Cylinder Engine
5-Speed Manual Transmission (EX)
5-Speed Automatic Transmission (LX, SE, Available EX)
Drive-by-Wire Throttle System[™]
Real Time[™] 4-Wheel Drive (4WD models)
Direct Ignition with Immobilizer Theft-Deterrent System
LEV-2 Emissions Rating (CARB)
Control-Link MacPherson Strut Front Suspension
Reactive-Link Double Wishbone Rear Suspension
Variable Power-Assisted Rack-and-Pinion Steering
Power-Assisted 4-Wheel Disc Brakes
110,000-Mile Tune-Up Interval⁵

Safety

Front, Side and Side Curtain Airbags with Rollover Sensor
Anti-Lock Braking System (ABS)
Electronic Brake Distribution (EBD)
Vehicle Stability Assist (VSA[™]) with Traction Control
Brake Assist
Lower Anchors and Tethers for Children (LATCH)
Child-Proof Rear Door Locks

Comfort & Convenience

Air Conditioning with Air-Filtration System
Power Windows with Auto-Up/Down Driver's Window
Power Door and Tailgate Locks
Cruise Control
Retractable Center Tray Table
Sunglasses Holder
Adjustable Steering Column
Beverage Holders, Front and Rear
Removable Folding Picnic Table
Waterproof Rear Storage Well
Driver's Seat with Manual Height Adjustment
60/40 Split Sliding Fold & Tumble Forward Rear Seats
Full-Swinging Tailgate with Integrated Glass Hatch
Tailgate-Mounted Full-Size Spare Tire with Cover
Remote Entry System
Driver's Seat with Manual Height Adjustment
Power Moonroof with Tilt Feature (EX, SE)
Rear Privacy Glass (EX, SE)
AM/FM/XM Ready[™] 1/6-Disc In-Dash CD Changer/
Cassette Audio System with 6 Speakers (EX, SE)
Steering Wheel-Mounted Audio Controls (EX, SE)
Exterior Temperature Indicator (EX, SE)
Leather-Trimmed Interior (SE)
Heated Front Seats (SE)

Exterior/Interior Colors

Alabaster Silver Metallic/Black (LX, EX)
Nighthawk Black Pearl/Black
Pewter Pearl/Black (SE)
Redondo Red Pearl/Ivory (LX, EX)
Royal Blue Pearl/Black (LX, EX)
Sahara Sand Metallic/Ivory
Silver Moss Metallic/Black (LX, EX)
Taffeta White/Ivory

EPA Mileage Estimates²

5-Speed MT (City/Highway): 21/26 (4WD)
5-Speed AT (City/Highway): 23/29 (2WD), 22/27 (4WD)

^{*}Horsepower and torque calculations reflect new SAE J1349 procedures revised August, 2004.

Engineering

244-hp (SAE net, Rev 8/04)* 3.5-Liter, 24-Valve, SOHC VTEC[®] V-6 Engine (4WD)
244-hp (SAE net, Rev 8/04)* 3.5-Liter, 24-Valve, SOHC I-VTEC[®] Engine (2WD)
Variable Cylinder Management™ (VCM™) (2WD)
Active Control Engine Mount System (ACM) (2WD)
5-Speed Automatic Transmission
Variable Torque Management™ 4-Wheel-Drive System (VTM-4™) (4WD models)
Drive-by-Wire Throttle System™
Direct Ignition with Immobilizer Theft-Deterrent System
100,000-Miles-or-More Tune-Up Interval[†]

Safety

Front, Side and Side Curtain Airbags with Rollover Sensor
Anti-Lock Braking System (ABS)
Electronic Brake Distribution (EBD)
Driver's and Front Passenger's Seat Belt Reminder
Vehicle Stability Assist (VSA™) with Traction Control
Brake Assist
Lower Anchors and Tethers for Children (LATCH) (2nd-row)
Tire Pressure Monitoring System (TPMS)

Comfort & Convenience

Multi-Functional Center Console Storage
with Cellular Phone Cradle
12-Volt Power Outlets (4 total)
Power Windows with Auto-Up/Down Driver's Window
Power Door and Tailgate Locks
Remote Entry System
Cruise Control
Front and Rear Air Conditioning with Air-Filtration System (LX)
Synchronized Automatic Climate Control System (EX, EX-L)
Steering Wheel-Mounted Audio Controls (EX, EX-L)
HomeLink™ Remote System^{††} (EX, EX-L)
AM/FM/XM Ready™/6-Disc In-Dash CD Changer Audio System
with 7 Speakers, including Subwoofer (EX)
Heated Front Seats (EX-L)
Power Moonroof with Tilt Feature (EX-L)
Heated Power Side Mirrors (EX-L)
Ambient Console Lighting (EX-L)
Leather-Trimmed Seats and Door-Panel Inserts
(front- and 2nd-row) (EX-L)
Available Honda Satellite-Linked Navigation System™^{†††} with Voice
Recognition, Off-Road Tracking and Rearview Camera (EX-L)
Available Honda DVD Entertainment System (EX-L)
115-Volt Power Outlet (DVD-equipped models)
XM™ Satellite Radio[†] (EX-L)

Exterior/Interior Colors

Amazon Green Metallic/Olive
Billet Silver Metallic/Gray
Desert Rock Metallic/Saddle
Nighthawk Black Pearl/Gray or Saddle
Redrock Pearl/Saddle
Sage Brush Pearl/Gray
Steel Blue Metallic/Gray
Taffeta White/Olive

EPA Mileage Estimates

5-Speed AT (City/Highway): 18/24 (2WD)[‡]
5-Speed AT (City/Highway): 17/22 (4WD)[‡]

*Horsepower and torque calculations reflect new SAE J1349 procedures revised August, 2004.

Pilot's energetic performance, sharp handling and rugged reliability make it ideal for all your adventures. The experts agree. It won the large SUV class among *Car and Driver's* "5Best" Trucks in '05 – and every other year since its release.[‡] But resting on laurels isn't the Honda way. So for 2006, the Pilot offers even more style, technology and safety – plus a new 2WD model that features a 3.5-liter engine with mileage-boosting Variable Cylinder Management™ (VCM™). Now you can adventure in a whole new way.



Pilot 4WD EX-L shown in Steel Blue Metallic with accessory crossbars and towing package.^{††}

You can opt for leather and a navigation system.^{†††}



Pilot

The Element embodies a unique attitude—call it a freedom from convention. And it turns out, not trying to fit in has made Element just the thing for almost anything you're up to. Element's seats for four are so versatile and flexible, there are no fewer than 64 configurations for passengers and cargo. Wide-opening side cargo doors and the clamshell rear hatch make loading and unloading a snap. And for '06, there's a new EX-P model that's painted all one cool color. So load it up, get out there and live your own unique way.



Element 4WD EX-P shown in Tangerine Metallic.*

Load two mountain bikes—with the wheels on.



Element

Engineering

156-hp (SAE net, Rev 8/04)† 2.4-Liter, 16-Valve, DOHC i-VTEC®
4-Cylinder Engine
5-Speed Manual Transmission
Available 4-Speed Automatic Transmission
Real Time™ 4-Wheel Drive (4WD models)
Direct Ignition with Immobilizer Theft-Deterrent System
Control-Link MacPherson Strut Front Suspension
Reactive-Link Double Wishbone Rear Suspension
Power-Assisted 4-Wheel Disc Brakes
110,000-Mile Tune-Up Interval‡

Safety

Dual-Stage, Dual-Threshold Front Airbags (SRS)
Front Side Airbags with Passenger-Side
Occupant Position Detection System (OPDS) (EX, EX-P)
Anti-Lock Braking System (ABS)
Electronic Brake Distribution (EBD)
Lower Anchors and Tethers for Children (LATCH)

Comfort & Convenience

Side Cargo Doors
Clamshell Tailgate
Waterproof FXC™ (Fabric for Extreme Conditions) Seat Fabric™
Driver's Seat with Manual Height Adjustment
Urethane-Coated Utility Floor
Fold-Flat-Capable Seating
Air Conditioning with Air-Filtration System
Power Front Windows with Auto-Up/Down Driver's Window
Power Door and Tailgate Locks
Cruise Control
Instrument Panel-Mounted Shifter
Beverage Holders, Front and Rear
Removable, Flip-Up Rear Seats
Removable Skylight with Tilt Feature (4WD models)
270-Watt AM/FM/CD Audio System with MP3/Windows Media™
Audio‡ (WMA) Playback Capability and 7 Speakers, Including
Subwoofer (EX, EX-P)
XM™ Satellite Radio‡ (EX, EX-P)
MP3/Auxiliary Input Jack (EX, EX-P)
Remote Entry System (EX, EX-P)
Overhead Storage Compartment with Map Lights (EX, EX-P)
Driver- and Passenger-Side Armrests (EX, EX-P)
Steering Wheel-Mounted Audio Controls (EX, EX-P)

Exterior/Interior Colors

Alabaster Silver Metallic/Gray and Blue
Atomic Blue Metallic/Gray and Blue
Kiwi Metallic™/Black and Gray (LX, EX-P)
Nighthawk Black Pearl/Black and Gray
Rallye Red/Black and Gray (LX, EX)
Tangerine Metallic™/Black and Gray (EX-P)
Tango Red Pearl/Black and Gray (EX-P)

EPA Mileage Estimates‡

5-Speed MT (City/Highway): 21/25 (2WD), 21/24 (4WD)
4-Speed AT (City/Highway): 22/26 (2WD), 21/24 (4WD)

*Kiwi Metallic and Tangerine Metallic available winter 2005.
†Horsepower and torque calculations reflect new SAE J1349
procedures revised August, 2004.

Engineering

247-hp (SAE net, Rev 8/04)* 3.5-Liter, 24-Valve, SOHC VTEC® V-6 Engine
Drive-by-Wire Throttle System™
Variable Torque Management™ 4-Wheel-Drive System (VTM-4®)
Fresh-Air Intake
ULEV-2 Emissions Rating (CARB)
Direct Ignition System with Immobilizer Theft-Deterrent System
Heavy-Duty Radiator with Dual Fans
Heavy-Duty Power-Steering Cooler
Heavy-Duty Automatic-Transmission Cooler
Integrated Closed-Box Frame with Unit-Body Construction
Fully Boxed High-Strength Steel (HSS) Frame Rails with Internal Stiffeners
Steel-Reinforced Composite (SRC) Cargo Bed
4-Wheel Independent Suspension
5,000-lb. Towing Capacity²¹
Pre-Wired for 4- and 7-Pin Connectors
100,000-Miles-or-More Tune-Up Interval⁹

Safety

Front, Side and Side Curtain Airbags with Rollover Sensor
Anti-Lock Braking System (ABS)
Electronic Brake Distribution (EBD)
Vehicle Stability Assist (VSA™) with Traction Control
Brake Assist
Tire Pressure Monitoring System (TPMS)

Comfort & Convenience

Power Windows and Door Locks with Remote Entry
Cruise Control
Multifunctional Center Storage Console with Sliding Armrest
60/40 Lift-Up Rear Seat with Underseat Storage
Power Sliding Rear Cabin Window
Dual-Action Tailgate
In-Bed Trunk™
Integrated Bed Lights (4) with Auto-Off Timer
Heavy-Duty Tie-Down Cleats (6)
Hidden Roof-Mounted Antenna
160-Watt AM/FM/XM Ready™/E-Disc In-Dash CD Changer
Audio System with 7 Speakers, Including Subwoofer (RTS, RTL)
Dual-Zone Automatic Climate Control System (RTS, RTL)
Steering Wheel-Mounted Audio/Cruise Controls (RTS, RTL)
Driver's Seat with 8-Way Power Adjustment (RTS, RTL)
HomeLink® Remote System¹¹ (RTL)
Leather-Trimmed Seats (RTL)
Heated Front Seats (RTL)
Driver's Seat with Power Lumbar Support (RTL)
Available Power Moonroof (RTL)
Available Honda Satellite-Linked Navigation System™¹⁴ with Voice Recognition (RTL)
XM® Satellite Radio⁴ (RTL with moonroof)

Exterior/Interior Colors

Amazon Green Metallic/Olive (RTS, RTL)
Billet Silver Metallic/Gray
Nighthawk Black Pearl/Beige
Redrock Pearl/Beige
Steel Blue Metallic/Gray
White/Beige or Olive

EPA Mileage Estimates²

5-Speed AT (City/Highway): 16/21

*Horsepower and torque calculations reflect new SAE J1349 procedures revised August, 2004.



The rear seat flips up for even more cargo room.²⁰

Ridgeline



When Honda does something, we do it right. And we do it better. This is the Ridgeline, a next-generation truck from Honda. It's tough, big and plenty powerful. And it's a Honda, so it's got plenty of versatility, innovation and performance, too. For starters, check out the huge In-Bed Trunk and an interior just as comfortable as it is functional. Then get out on a rough road and feel how 247 hp flowing through VTM-4® 4WD can smoothly power you ahead. Make no mistake – the Ridgeline is all truck. And then some.



Your dealer's team of trained technicians is at the ready to help keep your Honda in superb shape. All 2006 Honda vehicles – and any Genuine Honda Accessories installed at the time of purchase – are covered by the 3-year/36,000-mile New-Vehicle Limited Warranty.²² Plus, Honda cars and trucks are covered by a 5-year/60,000-mile Limited Powertrain Warranty, too. For more information or assistance, see your Honda dealer or please give us a call at 1-800-33-Honda.

HONDA

Financial Services

Whether you buy or lease your Honda vehicle, Honda Financial Services can assist you with the process. Please ask your dealer which lease or purchase plan best suits your needs.

HONDA Care

Honda Care™ is a highly affordable, comprehensive vehicle and travel protection plan backed by Honda reliability, service and parts. See your dealer for all the details.



¹Based on 2005 EPA mileage estimates. Final 2006 EPA mileage estimates were not available at the time of printing. Use for comparison purposes only. Actual mileage may vary. ²Rankings from Union of Concerned Scientists for model years 1998, 2001 and 2003. ³Based on 2006 EPA mileage estimates. Use for comparison purposes only. Actual mileage may vary. ⁴The Honda Satellite-Linked Navigation System is available only in 48 contiguous United States on select EX, EX-L, Odyssey Touring, RTL, SI and Hybrid models. ⁵Does not apply to fluid and filter changes. Exact mileage is determined by actual driving conditions. See your owner's manual for more details. ⁶Required XM[®] subscription sold separately after three trial months. All fees and programming subject to change. Subscriptions subject to Customer Agreement available at xmradio.com. XM Ready[™] audio system is pre-wired to accept the dealer-installed accessory XM Satellite Radio hardware. XM service only available in the 48 contiguous United States. The XM name and XM Ready are registered trademarks of XM Satellite Radio Inc. ⁷Windows Media[™] Audio is a trademark of Microsoft[®] Corporation. ⁸Preliminary EPA mileage estimates determined by Honda. Final 2006 EPA mileage estimates were not available at the time of printing. Use for comparison purposes only. Your mileage may vary. ⁹AFZEV rated by the California Air Resources Board (CARB). ¹⁰Car and Driver, 2005. ¹¹HondaLink[™] is a registered trademark of Proton Corporation, a wholly owned subsidiary of Johnson Controls[™]. ¹²Manual-transmission model only. ¹³Note: All comparisons were made between Michelin[®] Tires, Michelin and PAX are registered trademarks of Michelin North America, Inc. ¹⁴2005 Consumer Guide, Consumer Guide[®] is a registered trademark of Publications International, Ltd. ¹⁵2WD only. Based on 2006 EPA mileage estimates. Use for comparison purposes only. Actual mileage may vary. ¹⁶2005 Automotive Lease Guide. ¹⁷Car and Driver, 2005; Pilot released spring 2007 as MY07 model. ¹⁸Towing requires installation of power steering- and transmission fluid coolers, both available exclusively from your Honda dealer. Maximum towing capacity for 4WD models is 4,500 lbs. for boat trailers and 3,500 lbs. for all other trailers; premium unleaded fuel is recommended when towing above 3,500 lbs. Maximum towing capacity for 2WD models is 3,500 lbs. Refer to the owner's manual for additional towing information. ¹⁹EX[™] is a trademark of Milliken & Company. ²⁰Carrying too much cargo or improperly loading it can affect the handling and operation of the vehicle. Before carrying any cargo, be sure to consult the owner's manual for load limits and loading guidelines. ²¹Towing requires the addition of the Honda accessory trailer hitch and harness. Refer to the owner's manual for additional towing information. ²²**3-Year/36,000-Mile Limited Warranty, 5-Year/60,000-Mile Limited Powertrain Warranty.** Ordinary maintenance or adjustments, parts subject to normal wear and replacement, and certain items are excluded. See your Honda dealer for terms and conditions of the limited warranties. **Always use seat belts and appropriate child seats. Children 12 and under are safest when properly restrained in the rear seat.** Specifications, features, illustrations and equipment shown in this brochure are based upon the latest available information at the time of printing. Although descriptions are believed to be correct, accuracy cannot be guaranteed. American Honda Motor Co., Inc. reserves the right to make changes at any time, without notice or obligation, in colors, specifications, accessories, materials and models. Some features mentioned herein are not available in all areas. See your Honda dealer for details. Some vehicles may be shown with optional equipment. Available - Optional. All images contained herein are either owned by American Honda Motor Co., Inc., or used under a valid license. It is a violation of federal law to reproduce these images without express written permission from American Honda Motor Co., Inc., or the individual copyright owner of such images. Honda Financial Services is a DBA of American Honda Finance Corporation. Honda, the H-mark symbol, Honda Care, Honda Satellite-Linked Navigation System, Drive-by-Wire Throttle System, iMA, In-Bed Truck, Magic Seat, PlusOne Seat, Real Time, Variable Cylinder Management, VCM, Variable Torque Management, VTM-4, VSA, i-VTEC and VTEC are trademarks of Honda Motor Co., Ltd. © 2005 American Honda Motor Co., Inc.