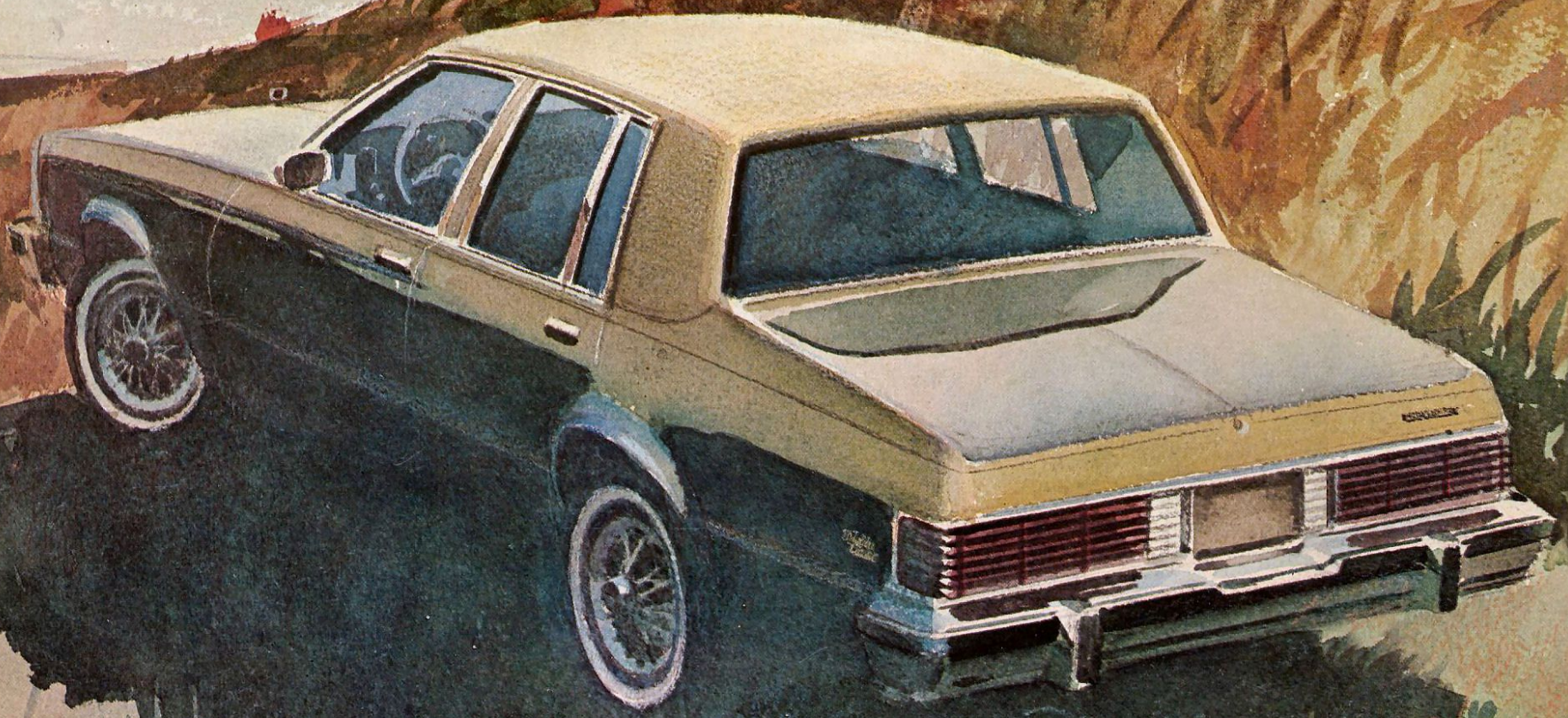


Malibu K81



F. HUNGER

Sedan · Coupe · Wagon

1981 Chevy Malibu.

You don't buy a Malibu just because it has a lot of room inside.

You don't buy it just for the fuel economy* or the riding comfort or the luggage space.

You don't buy a Malibu for its crisp styling, solid construction, smooth ride, handsome interior, Chevy value — or the wonderful way it feels when you slip behind the wheel.

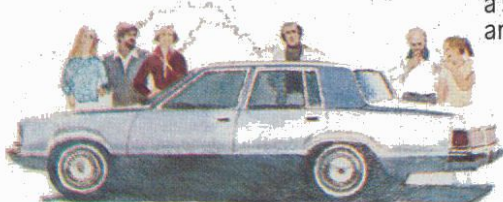
You don't buy a Chevy Malibu for any one of these reasons.

You buy it for all of these reasons. All of these and more.

Because what we have here, America, is a very comfortable family-size car with all kinds of value, efficiency and common sense.

It is also a car you'll get a huge kick out of driving.

And driving.
And driving.



Room for six, and stuff.

Try to cram a sizeable family into a little car and you're in big trouble.

Not so with Chevy's mid-size Malibu.

Though trim and tidy on the outside, Malibu sits six people of assorted size without making contortionists of them.

And behind them, in the trunk, there's room for almost 17 cubic feet of just about anything anybody would want to haul.

On vacation.
On a run-around Saturday.
Anytime.

A beautiful car, outside and in.

Words like clean, trim, uncluttered and contemporary begin to describe Malibu.



Words like gaudy definitely don't. That's because we want you not to tire of the way your Malibu looks.

The crisp new cut of the Sport Sedan's roof line makes this popular 4-door all the harder to resist for 1981. Inside, Malibu is a bright and cheerful place to be.



Contoured full foam seats are covered with smart cloth to please not just your body but your eye.

And a brand-new optional Special Custom interior for Malibu Classic Sport Sedans and Sport Coupes gives you the definite feeling you've been reborn into royalty. There are sumptuous touches everywhere, including a 55/45 split front seat with fold-down armrest.

Not extravagant, mind you. Just awfully nice.

Feels great on the road.

Malibu's smart size pays off as you drive. It's small enough to slip easily through tight traffic and into stingy parking places, yet big enough to give you a smooth and solid ride out on the open road.

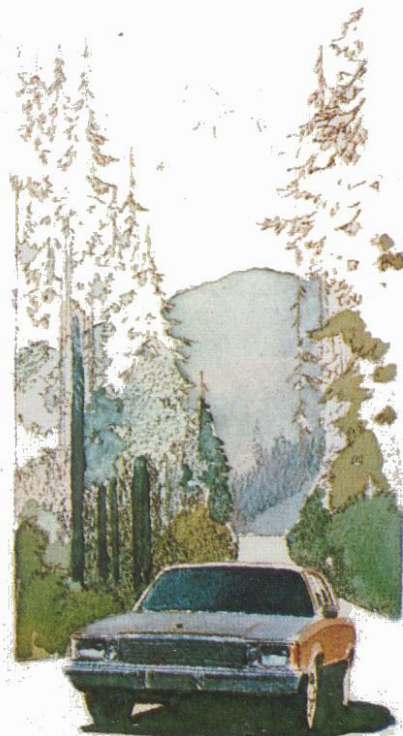
Components include: Full Coil suspension, front stabilizer bar, V6 engine, cushioned body mounting system, full-perimeter frame.

All are standard, as are radial tires, power steering, power brakes and much more.

And for the ultimate in Malibu road-ability you can have the optional F41 Sport suspension package.

It also happens to be a lot of fun.

Yes, fun. Try it.



A car is not just what we make it. It's also what you make it, through the skillful selection of options.

For example, you could take the Malibu Sport Sedan and add the aforementioned F41 suspension with required P205/70 radial tires, a pair of sport mirrors, a gage package and Rally wheels and you know what you'd have?

A decidedly upbeat automobile. A Malibu for the young, and young at heart.

What's new for 1981?

One way Chevrolet got to be Chevrolet was never to leave good enough alone.

So for 1981, we've worked hard to make Malibu an even better car than before.

For instance, there's our new Computer Command Control. It's an actual computer that monitors engine functions to help provide impressive efficiency while helping to control emissions.

Also new for 1981:

A jack that lifts the car from the side.

New Easy-Roll tires. (They take a little more air to save a little more gas.)

There's also a new grille, new tail-lights, a restyled instrument panel.

And as mentioned, that rakish new sedan roof line and spiffy new optional interior.

All in all, Malibu is one heck of a car.

Read all about it.

A WORD ABOUT THIS CATALOG.

We have tried to make this catalog as comprehensive and factual as possible and we hope you find it helpful. However, since the time of printing, some of the information you will find here may have been updated. Also, some of the equipment shown or described throughout this catalog is available at extra cost. Your dealer has details and, before ordering, you should ask him to bring you up to date.

The right is reserved to make changes at any time, without notice, in prices, colors, materials, equipment, specifications and models. Check with your Chevrolet dealer for complete information.

*For Malibu EPA estimated mileage, check the wall poster displayed at your Chevrolet dealer's showroom, or ask for an EPA mileage sheet to take home with you.

MALIBU CLASSIC

Top-of-the-line Malibu Classic is a Malibu and then some . . . whether it's a sedan, coupe or wagon. Leaf through the pages that follow and see for yourself what makes it so appealing.

Special touches include pull straps on the front doors, full wheel covers, additional sound insulation, courtesy light, glove compartment light, dual horns, hood ornament and more.

For a Malibu Classic with a personality all its own, look over the Malibu Classic Landau Coupe. Package includes vinyl cover over rear portion of roof, sport wheel covers, and body pin striping.

Then there's the new optional Special Custom interior for sedans and coupes whose rich fabric, comfort and elegant detail show what luxury is all about.

If you like to go first class, Malibu Classic is your car.



Malibu Classic Sport Sedan.



ANA

Malibu Classic

Malibu Classic Sport Sedan.



Malibu Classic optional new Special Custom Interior with 55/45 split front seat includes fold-down armrest.



Malibu Classic standard interior.



Malibu Classic interior with optional bucket seats. (Coupe only.)



Malibu Classic Landau Coupe.



Malibu Sport Coupe.



Malibu standard cloth interior.



Malibu Sport Sedan with optional vinyl roof.

MALIBU

We may be a little prejudiced, but we firmly believe Malibu is one of the best buys in America today for people who need the room and comfort of a six-passenger car.

Consider these credentials: Crisp, contemporary styling. Good fuel economy. Peppy performance. A smooth ride. And a trunk that's family-size.

Standard Malibu features include power

steering, power front disc brakes, V6 engine, new Easy-Roll radial tires, new Delco Freedom II battery, full-perimeter frame, Full Coil suspension, front stabilizer bar, wall-to-wall carpeting, dual-mode flow-through ventilation, an acoustical ceiling, and our new Computer Command Control system. See page 12 for details.

There's one word that sums it all up. The word is value. It's what makes a Malibu a Malibu.

STANDARD FEATURES



COMPUTER COMMAND CONTROL

Every 1981 gasoline-engined Chevrolet passenger car includes a sophisticated, thoroughly tested on-board computer as standard equipment. It gives you the cleanest-burning gasoline engines in Chevrolet's history. And points the way to impressive fuel economy.

That's just the beginning of the benefits. By continuously monitoring your engine's functions, Computer Command Control adjusts the performance of your car under all operating conditions — continuously — as you drive. Air-fuel mixtures are constantly adjusted to driving conditions, and the system compensates for altitude, barometric pressure and temperature changes. And, when compared to last year, the system actually reduces the number of recommended maintenance operations.

We believe that the Computer Command Control will enable the Chevrolet Motor Division to achieve the highest average fuel economy in its history* and, at the same time, reduce exhaust emissions to the lowest level in Chevrolet history.

Computer Command Control is also self-diagnostic. In fact, should a malfunction occur, the system will help diagnose it and pinpoint the problem for your Chevrolet service technician. Another benefit of Computer Command Control is that it is covered by the 5-year/50,000-mile emission system warranty. Ask your dealer for details.

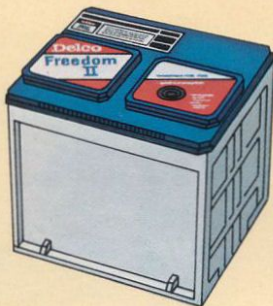
*This is a measure of Chevrolet Motor Division's fuel economy based on a projected sales-weighted average of the EPA combined mileage estimates for all Chevrolet passenger cars produced during this model year.



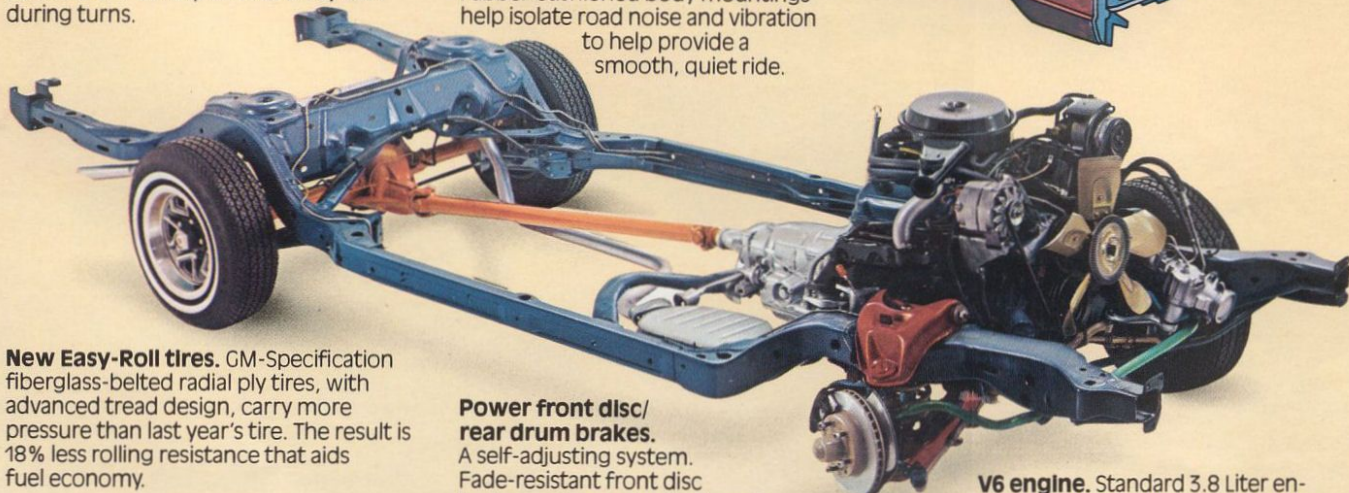
Compact spare tire. Provides more usable space in trunk compartment compared to conventional spare; lighter and easier to handle as well.

Delco Freedom II battery.

Improved new design has more staying power than the original Freedom battery. It never needs refilling and provides more reliable starting. It also is better able to withstand road shock and vibration. Maintenance-free.



Full Coil suspension. Coil springs at each wheel are computer-selected for specific model and equipment. Includes front stabilizer bar to help reduce body lean during turns.



New Easy-Roll tires. GM-Specification fiberglass-belted radial ply tires, with advanced tread design, carry more pressure than last year's tire. The result is 18% less rolling resistance that aids fuel economy.



Large trunk capacity. Generously sized trunk for sedans and coupes has almost 17 cu. ft. of space that absorbs suitcases for vacation travel and bulky objects for weekend hauling.

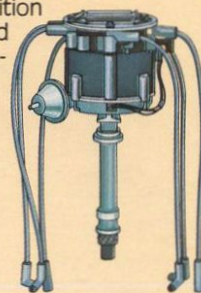
Full-perimeter frame. Helps provide strength and torsional rigidity. Fourteen strategically located rubber-cushioned body mountings help isolate road noise and vibration to help provide a smooth, quiet ride.

Power front disc/rear drum brakes.

A self-adjusting system. Fade-resistant front disc brakes are teamed with finned rear brake drums. Include disc brake audible wear sensors that warn when pads need replacing.

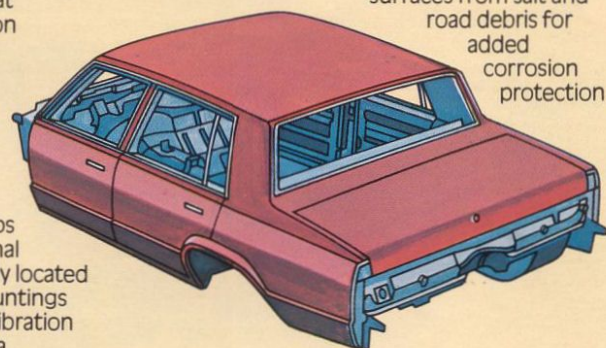
High Energy Ignition.

A solid-state system that eliminates points and ignition condenser, and delivers a high-voltage spark that helps extend time between tune-ups.



Increased corrosion-resistant treatments.

More protection than ever that includes painting of body with new primer paint, applied by an electrocoating process; plus submersion of frame assembly in new hot melt wax. **Inner fenders, front and rear.** Help protect outer surfaces from salt and road debris for added corrosion protection.



V6 engine. Standard 3.8 Liter engine is fuel-efficient and responsive; compact size in engine compartment makes it easier to service than V8 engines.

More Standard Features.

SEDANS, COUPES AND WAGONS:

- Power steering
- New side-lift frame jack
- Color-keyed seat and shoulder belts
- Single-retractor front seat belt system
- Molded full foam seat construction
- Inside hood release
- Foam-backed cloth headlining
- One-piece cut-pile passenger compartment carpeting
- Day/night rear-view mirror
- Color-keyed steering column and steering wheel
- Column-mounted lever for turn signal and headlight dimmer
- Glove compartment lock
- Cigarette lighter
- Double-panel door, hood, deck lid or tailgate construction
- Delcotron generator
- Dual-mode flow-through ventilation
- Hide-A-Way dual-speed electric windshield wipers
- Cushioned body mounting system
- Visible ball joint wear indicators on front suspension lower control arms
- Coolant recovery system
- Steel bumpers with high-strength aluminum reinforcements (steel reinforcement with wagon rear bumper).

MALIBU CLASSIC:

- New front door pull straps
- Full wheel covers
- Glove compartment, instrument panel, courtesy and ashtray lights
- Special acoustical quiet package
- Dual horns.

MALIBU CLASSIC LANDAU:

- Vinyl cover on rear portion of roof
- Sport wheel covers
- Body pin striping.

For still more standard features on wagons, see page 18.

Engine Selection.

3.8 Liter V6.

This smooth-firing standard V6 with 229-cubic-inch displacement is fuel-efficient. A lightweight version of the optional 5.0 Liter V8, it is short and compact with cylinders banked three to a side, has a cast-iron engine block and crankshaft, plus Dualjet carburetor. Compression ratio, as well as the cylinder diameters and inlet and exhaust valves, is identical to the 5.0 Liter V8. A slightly larger 3.8 Liter (231 Cu. In.) V6 is standard in California.

4.4 Liter V8.

This optional 267-cubic-inch engine delivers added power for passing and carrying heavy loads. It is characterized by a short-stroke valve-in-head design and Dualjet carburetor which help give good engine performance. It also features a cast-iron cylinder block with full jacket cylinder cooling, a precision-balanced, cast nodular iron crankshaft, hydraulic valve lifters and exhaust valve rotators. Not available in California.

5.0 Liter V8.

Get a generous reserve of power and performance plus added trailer-towing capacity with this optional 305-cubic-inch V8. Its short-stroke valve-in-head design is equipped with a 4-barrel carburetor for added power output. Includes full jacket cylinder cooling, a precision-balanced crankshaft and hydraulic valve lifters. See Power Teams chart for availability.

SAFETY FEATURES.

OCCUPANT PROTECTION.

- Manual lap belts with push-button buckles for rear and center front (when applicable) passenger positions
- Manual lap/shoulder belts for driver (with reminder light and buzzer) and right front passenger
- Energy-absorbing steering column
- Passenger guard door locks
- Safety door latches and stamped steel hinges
- Folding seat back latches
- Energy-absorbing padded instrument panel and front seat back tops
- Laminated windshield/tempered side and rear glass
- Safety armrests
- Identification symbols for controls and displays.

ACCIDENT AVOIDANCE.

- Side marker lights and reflectors
- Parking lamps that illuminate with headlamps
- Four-way hazard warning flasher
- Backup lights
- Lane-change feature in direction signal control
- Windshield defrosters, washer and dual-speed wipers
- Vinyl-edged inside mirror
- Outside rearview mirror
- Dual master cylinder brake system with warning light
- Starter safety switch
- Dual-action safety hood latches.

ANTI-THEFT.

- Anti-theft ignition key reminder buzzer
- Anti-theft steering column lock.

MALIBU POWER TEAMS

Engine	Ordering Code	Displacement (cubic inches)	Sedans and Coupes	Station Wagons	Three-Speed Manual (1)	Automatic Transmission	Coupe, Station Sedans	Station Wagons
All States Except California								
3.8 Liter 2-Bbl. V6 (A)	LC3	229	Std.	Std.	Std.	EC	EC	EC
4.4 Liter 2-Bbl. V8 (B)	L39	267	EC	EC	NA	EC	EC	EC
5.0 Liter 4-Bbl. V8 (B)	LG4	305	NA	EC	NA	NA	NA	EC
California Only (with California Emission Requirements)								
3.8 Liter 2-Bbl. V6 (C)	LD5	231	Std.	Std.	NA	EC	EC	EC
5.0 Liter 4-Bbl. V8 (B)	LG4	305	EC	EC	NA	EC	EC	EC
Std. — Standard.			NA — Not Available.		EC — Optional at Extra Cost.			
(1) With floor-mounted shift control.			(B) CHEVROLET MOTOR DIVISION and GM OF CANADA					
PRODUCED BY GM:			(C) BUICK MOTOR DIVISION					
(A) CHEVROLET MOTOR DIVISION								

LONG RECOMMENDED SERVICE INTERVALS*

Engine Oil . . . 12 months or 7,500 miles

Oil Filter . . . 12 months or 7,500 miles; every 15,000 miles thereafter

Spark Plugs . . . 30,000 miles

Chassis Lubrication . . . 12 months or 7,500 miles

Automatic Transmission Fluid Change . . . Every 100,000 miles

*See the Owner's Manual for conditions requiring more frequent intervals.

DIMENSIONS (in inches)

Exterior	Sedan	Coupe
Wheelbase	108.1	108.1
Length (overall)	192.7	192.7
Width (overall)	72.3	72.3
Height (overall)	55.7	55.7
Fuel Tank Capacity	18.1 gal.	18.1 gal.
Interior		
Head Room — Front	38.7/38.5*	37.9/37.6*
Leg Room — Front	42.8	42.8
Shoulder Room — Front	57.2/56.7*	56.8/56.2*
Hip Room — Front	52.2	51.7
Head Room — Rear	37.7/37.4*	37.8/37.6*
Leg Room — Rear	38.0	35.1
Shoulder Room — Rear	57.1	55.6
Hip Room — Rear	55.6	54.5
Usable Luggage Capacity (cu. ft.)	16.6	16.6

*Malibu Classic

For wagon dimensions, see page 19.

OPTIONS

Make Malibu whatever you like by choosing from the options shown here which are designed for comfort, pure pleasure or convenience.

1. Wire wheel covers with new locking option. New locking device for optional wire wheel covers helps protect against theft. Bracket that locks wheel cover to hub area can be removed only by using special tool to loosen bolt fastener.

2. Rally wheels. Star design with gray and silver-color accents. Includes bright trim rings.

3. Sport wheel covers. Honeycomb-like pattern in either silver or gold color.†

4. Vinyl roof cover. Adds still more distinction to the new formal roof on sedans as well as on coupes. (Not available on Malibu Classic Landau Coupe.) **Electric rear window defogger** (shown). Helps keep rear window free of fog or frost.

5. Gage Package with trip odometer. Includes electric clock, voltmeter, temperature and oil pressure gages plus simulated wood-grain trim. Shown on restyled Malibu Classic instrument panel that's better looking than ever this year.

6. Power windows. Includes power rear vents which can be controlled from driver's seat or in rear. (Sedans and wagons.)

7. Automatic speed control with new "resume speed" feature. Automatically maintains a constant speed without touching accelerator when you have an optional automatic transmission. New "resume speed" feature lets driver slow up or stop, then accelerate again to the preset speed without resetting control.

8. Auxiliary lighting. Includes ashtray, glove compartment and instrument panel courtesy lights*; luggage compartment and underhood lights; automatic time-delay dome light; headlight reminder buzzer; and cargo-area dome lamp for wagons.

9. Comfortilt steering wheel. Adjusts to six different positions for a comfortable driving angle and for easier entries and exits.

10. Air conditioning. Cools and ventilates with easily operated controls. **Sound systems.** Built to GM-Delco quality standards. Choose from AM radio, AM/FM radio, AM/FM stereo radio, AM/FM stereo with 8-track stereo tape or stereo cassette tape or AM/FM stereo/Citizens Band radio with power antenna. Radios include dual front speakers. Stereo systems include dual rear speakers. Windshield antenna included with factory-installed radios.

11. Intermittent windshield wiper system. Lets you vary the speed of wiper cycles to match weather, from light mist to downpour.

12. Power radio antenna. Turn on radio and antenna automatically rises from fender; turn off radio or ignition and it lowers. Available only with optional factory-installed radios.

F41 Sport suspension (not shown). Gives you a firmer ride and reduces body sway on curves with the help of a larger diameter front stabilizer bar, rear stabilizer bar, higher rate springs and matching shock absorbers. Requires P205/70 radial tires. (Not available for wagons.)

Still other options you may need or enjoy.

FOR SEDANS, COUPES AND WAGONS —
 New halogen headlights noticeably increase nighttime visibility
 New Landau-style vinyl roof cover (coupes)
 Automatic transmission with torque converter clutch
 Electric clock
 Console
 Tinted glass, all windows
 New Special Custom Interior with 55/45 split front seat (Malibu Classic Sedans and Coupes)
 Custom Two-Tone paint
 Power door locks
 Body pin striping†
 Bumper rub strips
 Bumper guards
 Color-keeved floor mats, front and rear
 Restyled full wheel covers**
 Quiet Sound Group*
 Limited slip differential axle
 Heavy-duty battery
 Heavy-duty cooling
 Delcotron 63-amp generator
 Dual horns.*

Seating: 55/45 split front seat (Malibu Classic)
 Power seat (driver's side with 55/45 split front seat)
 Bucket seats (Malibu Classic Coupe).

Moldings: Deluxe body side moldings
 Door edge guards
 Side window reveal moldings*
 Wheel opening moldings.***

Mirrors: Remote control outside rearview mirror, LH
 Sport mirrors, LH remote and RH manual
 Twin remote sport mirror.

Special Suspension: Heavy-duty front and rear suspension.

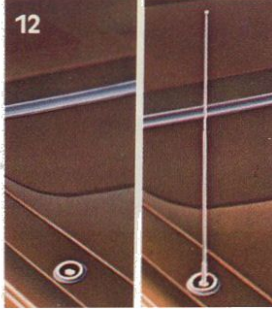
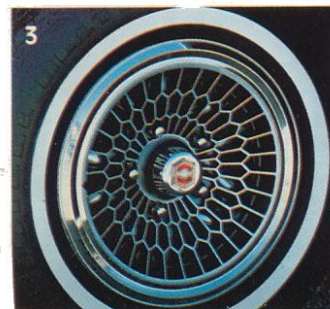
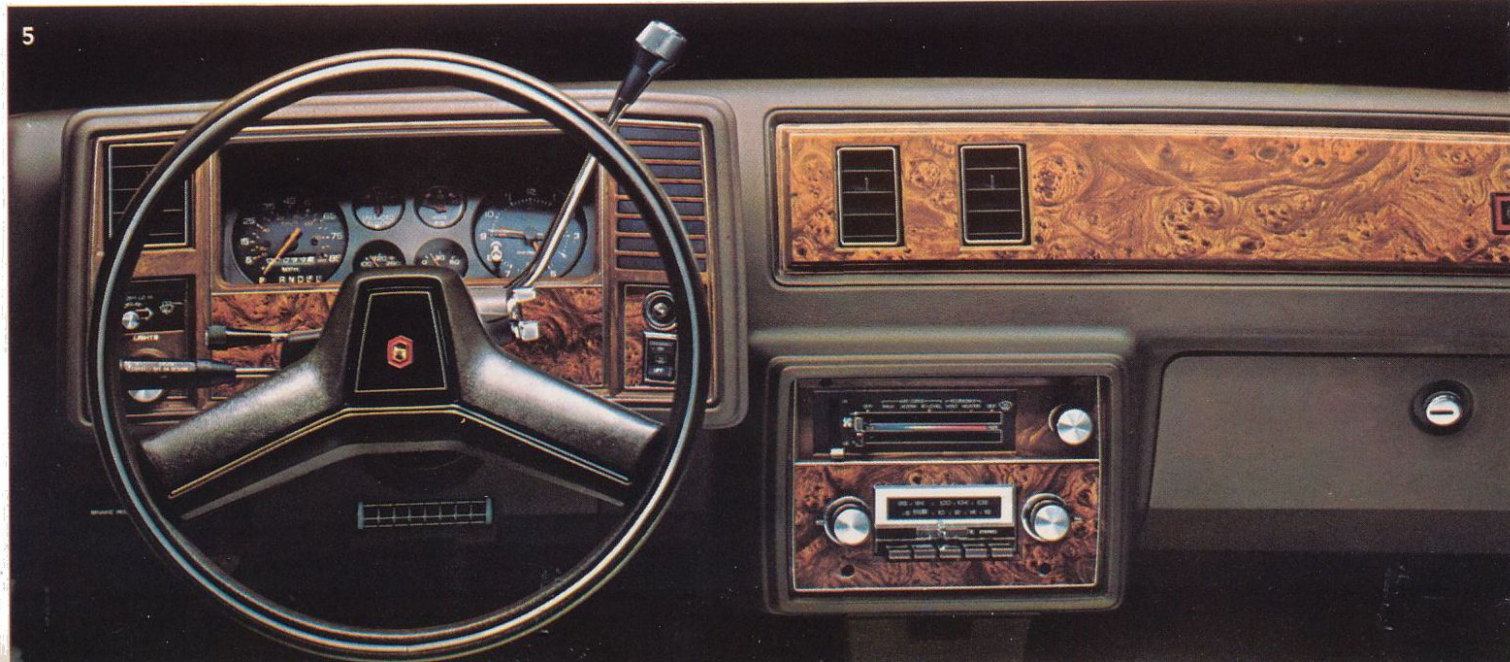
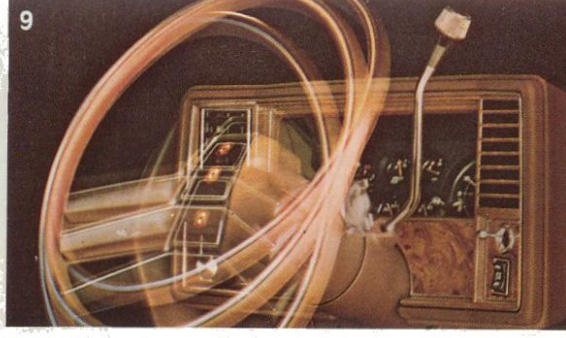
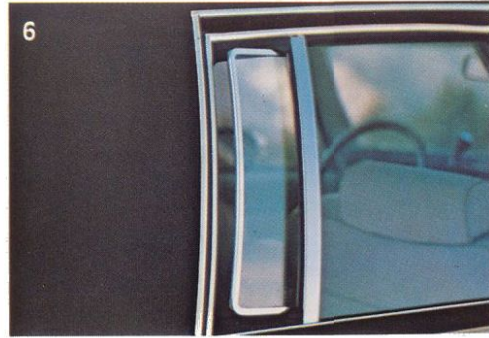
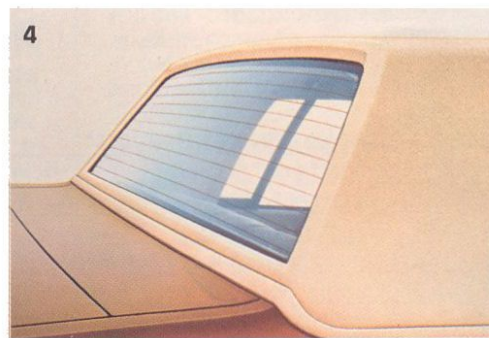
Tires: P185/75R-14 fiberglass-belted radial ply white-wall (sedans and coupes)
 P195/75R-14 steel-belted radial ply white-wall
 P205/70R-14 steel-belted radial ply white-wall (sedans and coupes, Sport suspension required)
 P205/70R-14 steel-belted radial ply white-lettered (sedans and coupes, Sport suspension required).

*Standard on Malibu Classic models.

**Standard on Malibu Classic and wagons.

†Standard on Malibu Classic Landau.

Discover even more options for wagons on page 19.



MALIBU CLASSIC SPORT SEDANS/COUPES		Beige	Dk. Blue	Camel	Champagne	Jade	Maroon
Standard front bench seat and optional 55/45 split front seat	Cloth (Standard)	X	X	X	X	X	X
	Vinyl (Optional)		X	X	X	X	X
Optional Special Custom interior with 55/45 split front seat	Custom cloth	X	X		X	X	X
Optional bucket seats (coupes only)	Cloth		X	X		X	X
	Vinyl		X	X	X	X	X
MALIBU CLASSIC WAGONS							
Standard front bench seat and optional 55/45 split front seat	Cloth (Standard)		X	X			X
	Vinyl (Optional)		X	X	X		X
MALIBU SPORT SEDANS/COUPES							
Standard front bench seat	Cloth (Standard)		X	X			X
	Vinyl (Optional)		X	X		X	X
MALIBU WAGONS							
Standard front bench seat	Vinyl		X	X		X	X
Optional Custom bench seat	Custom vinyl		X	X			X

EXTERIOR COLORS		Beige	Black	Blue, Dark (Metallic)	Blue, Light (Metallic)	Brown, Light (Metallic)	Brown, Medium (Metallic)	Champagne (Metallic)	Cream	Green, Light Jade (Metallic)	Green, Jade (Metallic)	Maroon, Light (Metallic)	Maroon (Metallic)	Silver (Metallic)	White
	Beige	X	X	X											X
	Black	X		X	X	X	X	X							X
	Blue, Dark (Metallic)	X	X	X											
	Blue, Light (Metallic)	X													
	Brown, Light (Metallic)	X				X									
	Brown, Medium (Metallic)	X				X									
	Champagne (Metallic)	X				X	X	X							
	Cream								X	X					
	Green, Light Jade (Metallic)										X				
	Green, Jade (Metallic)	X				X	X				X				
	Maroon, Light (Metallic)	X				X									X
	Maroon (Metallic)	X				X									X
	Silver (Metallic)		X											X	X
	White	X	X	X	X	X	X	X	X	X	X	X	X	X	X

CUSTOM TWO-TONE COLORS AVAILABLE:

Beige/Lt. Brown*	Black/Lt. Jade Green*	Dk. Blue/Med. Blue*	Med. Brown/Lt. Brown*	Champagne/Cream†	Lt. Jade Green/Jade Green*	Maroon/Lt. Maroon*
Int. Color: Beige or Camel	Int. Color: Jade	Int. Colors: Beige, Dk. Blue, or Camel	Int. Colors: Beige or Camel	Int. Color: Champagne	Int. Color: Jade	Int. Colors: Beige, Camel, or Maroon

Vinyl roof colors available: Black, white, dark blue,* light jade green,* maroon,* beige, champagne.* Check your dealer for complete information on vinyl roof and color availability.

*Metallic

†Available only for Malibu Classic models



Malibu Classic Wagon.

WAGON STANDARD FEATURES

Malibu Wagon, as you might expect, is a talented handler of loads.

What may come as a surprise is how well it handles a road. With a wheelbase just 108.1 inches long, Malibu has coupe-like maneuverability in tight parking spots. It is a responsive vehicle with a smooth ride.

We think you'll truly enjoy driving it.

There's room for up to six people. Or, with the back seat down, more than 71 cubic feet of cargo.

Standard features include power steering and power front disc brakes, radial tires, V6 engine, Full Coil suspension, full wheel covers and steel-reinforced rear bumper.

In short, it's a very nice wagon.

It's also a very nice car.

Find wagon power teams, recommended service intervals and still more standard features on pages 12-13. Wagon interior and exterior colors shown on page 15.



Big load space. Lift a handle and the back seat folds down, creating a stretch of 81.2 inches from front seat to tailgate. Holds up to 71.8 cu. ft. of cargo in Malibu Classic, 72.4 cu. ft. in Malibu.



Out-of-sight floor storage. A roomy spot located below the floor in the rear cargo area for storing purchases or valuables you carry along daily. Tuck small items in bins located at each side of cargo area.



Versatile hatchgate. Flip up the top window and you can conveniently drop off small packages. Or open hatchgate fully when you've bulky items to load. Hatchgate opening measures 27.8 in. high, 51.6 in. wide at belt and 54.0" wide at floor.

WAGON OPTIONS

Give your Malibu Wagon some nice extra touches with the options on this page that fit your personal tastes and fill your personal needs. Even more wagon options may be found on pages 14-15.

Dimensions (In Inches)

EXTERIOR	Wagon
Wheelbase	108.1
Length (overall)	193.4
Width (overall)	71.9
Height (overall)	55.8
Fuel Tank Capacity	18.2 gal.
INTERIOR	
Head Room — Front	38.8/38.5*
Leg Room — Front	42.8
Shoulder Room — Front	57.2/57.7*
Hip Room — Front	52.2
Head Room — Rear	38.8/38.5*
Leg Room — Rear	35.9
Shoulder Room — Rear	57.1
Hip Room — Rear	55.6
Floor Length — Front Seat to Tailgate	81.2
Width Between Wheelhousings	43.6
Total Cargo Volume (cu. ft.)	72.4/71.8*
*Malibu Classic	

Coupe and sedan dimensions shown on page 13.



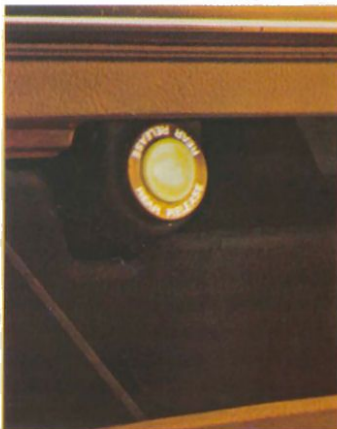
Estate equipment. Includes simulated wood-grain vinyl on body and tailgate panels. A great dress-up addition to your wagon. For Malibu Classic only.



Roof carrier. Perfect for luggage on family trips; leaves interior free for passengers' comfort. Comes with front and rear rails that are easily adjustable.



Deluxe load floor carpeting. Matches the color of passenger compartment carpeting. Helps prevent scratches when loading or unloading bulky objects.



Power tailgate window release. A touch of a button inside glove box releases the swing-up window. Lifts easily upward to facilitate loading.



Cargo area security package. Adds lockable covers to bins at each side of cargo area plus a lock on the floor compartment shown on opposite page.



Electric rear window defogger. Electric heating elements help keep rear window free of fog or frost.



Rear window air deflector. Helps keep snow, dust and moisture from accumulating on the rear window while driving.

Continuous
Protection
Plan

GM

The GM Continuous Protection Plan. Offers service protection in addition to that provided by GM's new vehicle limited warranty. Ask your dealer about it. Coverage available only in the U.S.A. and Canada for the 1981 model year.

A WORD ABOUT ENGINES.

Malibus are equipped with GM-built engines produced by various divisions. Please refer to the Malibu Power Teams chart on page 13 or see your dealer for details.

A WORD ABOUT ASSEMBLY, COMPONENTS AND OPTIONAL EQUIPMENT IN THESE CHEVROLET PRODUCTS.

The Chevrolets described in this catalog are assembled at facilities of General Motors Corporation operated by the GM Assembly Division or GM of Canada. These vehicles incorporate thousands of different components produced by various divisions of General Motors and by various suppliers to General Motors. From time to time during the manufacturing process, it may be necessary, in order to meet public demand for particular vehicles or equipment, or to meet federally mandated emissions, safety and fuel economy requirements, or for other reasons, to produce Chevrolet products with different components or differently sourced components than initially scheduled. All such components have been approved for use in Chevrolet products and will provide the quality performance associated with the Chevrolet name.

With respect to extra cost optional equipment, make certain you specify the type of equipment you desire on your vehicle when ordering it from your dealer. Some options may be unavailable when your car is built. Your dealer receives advice regarding current availability of options. You may ask the dealer for this information. GM also requests the dealer to advise you if an option you ordered is unavailable. We suggest that you verify that your car includes the optional equipment you ordered or, if there are changes, that they are acceptable to you.



Malibu Classic Sport Coupe.

