


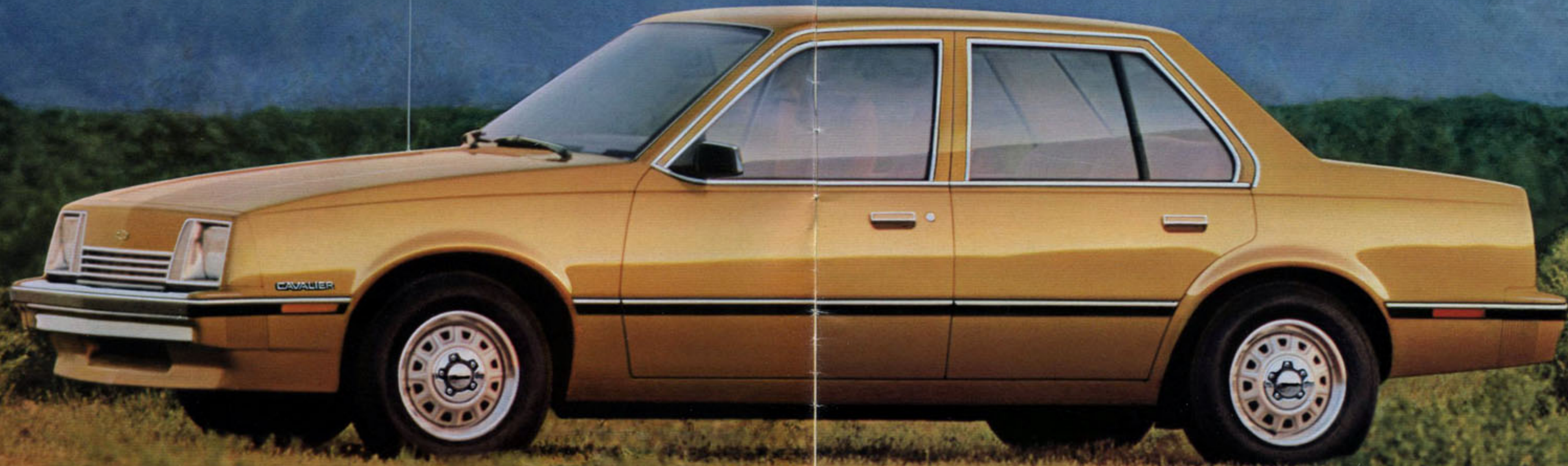
# 1982 CAVALIER

---

THE  
COMPLETE  
CAR



  
Chevrolet



Cavalier 4-Door Sedan Shown Above and on Cover.

## CAVALIER. THE MOST COMPLETE NEW CAR WE'VE EVER INTRODUCED.

Welcome to a new era in automotive design and function.

Welcome to the 1982 Chevy Cavalier. The most complete new car we've ever introduced. What do we mean by "complete"? Read on.

### Complete in standard features.

No other new car ever introduced by Chevrolet has been so well equipped as the 1982 Cavalier.

A listing of some of those standard features can be found on pages 4-5. It's impressive reading.

### Complete in technology.

Virtually designed by the wind, that sleek shape you see is the product of extensive wind tunnel work under gale-force conditions. In fact, a low drag coefficient (only 0.40 with the Hatchback Coupe) is a major

factor in Cavalier's ability to cruise at 50 MPH with less horsepower than most other production cars on the road.

And, while you're driving, your engine's functions are monitored constantly by a sophisticated on-board computer that fine tunes the performance. A good example of GM "J" car technology at work.

If the going gets tough, front-wheel drive helps provide the traction you need for snow, mud or wet streets. More than 60% of the weight is over the driving wheels.

Your ride is smooth and responsive. Front suspension features MacPherson struts, and coil springs are in back. The steering is high-mounted rack-and-pinion. And the body rests on a 101" wheelbase which pays off in a remarkable amount of room in the passenger compartment and cargo area.

Cavalier has been tested and retested. It's the most thoroughly tested new car in our history.

### Complete in comfort.

Front-wheel drive with a transverse-mounted engine and transaxle means stretch-out space inside.

Cavalier has exterior dimensions similar to many well-known imports. Yet inside, you'll find more passenger room and more cargo room than Honda Accord, Datsun 210 or Toyota Corolla.

Cavalier is squarely positioned in size between Chevy Chevette and Citation. Yet, except for shoulder room and hip room, Cavalier has virtually the same roomy interior as the larger Citation. And Cavalier has more head room.

You'll also be impressed by the steps we have taken to engineer noise out of the Cavalier. We've used

acoustical materials that are low in weight and high in effectiveness.

Comfort is also things like fully reclining front seats. Armrests with integral door pull handles. An assist grip above each passenger door. And a convenient center console.

### Complete in efficiency.

Here is the kind of efficiency today's driving realities demand. With the standard 1.8 Liter 4-cylinder engine and 4-speed manual overdrive transmission, Cavalier has an impressive **26** EPA estimated MPG and a highway estimate of **42**\*. There's even a Maximum Efficiency (ME) Coupe available with **30** EPA estimated MPG, **47** highway estimate.\* It includes a 4-speed manual overdrive transmission and is not available with air conditioning or power steering. The ME Coupe is not available in California.

### Complete in quality.

Take a good look at a 1982 Cavalier.

Notice the tight fit around the hood, doors and deck lid. The brazed sheet metal seams that blend into the solid unibody. The smooth, durable, high-luster acrylic finish. And the attention to detail—such as window moldings bevelled like a fine picture frame.

But Cavalier's quality runs deeper. "There are two ways to ensure a consistently high-quality car," says Roger Masch, Chevrolet Chief Engineer for Cavalier. "The first is in a design that can be built to consistent specifications, and the

second in manufacturing technology that can hold within the specifications. On both sides, we have accomplished remarkable successes."

Gerald W. Ropers, Project Manager at Fisher Body, is a leader in this new approach to design.

"Consistency is the key," Ropers says. "You design all components so there is only one way they can be put together—the right way."

"For example, door and fender mountings traditionally are designed to 'float' in oversized holes so that the assembler can make adjustments to compensate for

variations in fit. On the Cavalier, there are no adjustments. The holes are exactly the same size as the bolts... and the end result is a true-fitting door and fender every time."

An entire regiment of new automatic controls was needed to keep the rigid standards. Such dramatic devices as gamma-ray inspection to test parts hidden from view are used for the first time. Ultrasonic weld testers to measure the strength of a weld with echo readings. And there are robot-manipulated optic probes—devices that actually see to check the precision of joints and of body openings.

Our quality commitment extends to over 1,000 checks like these.

### Complete in choice.

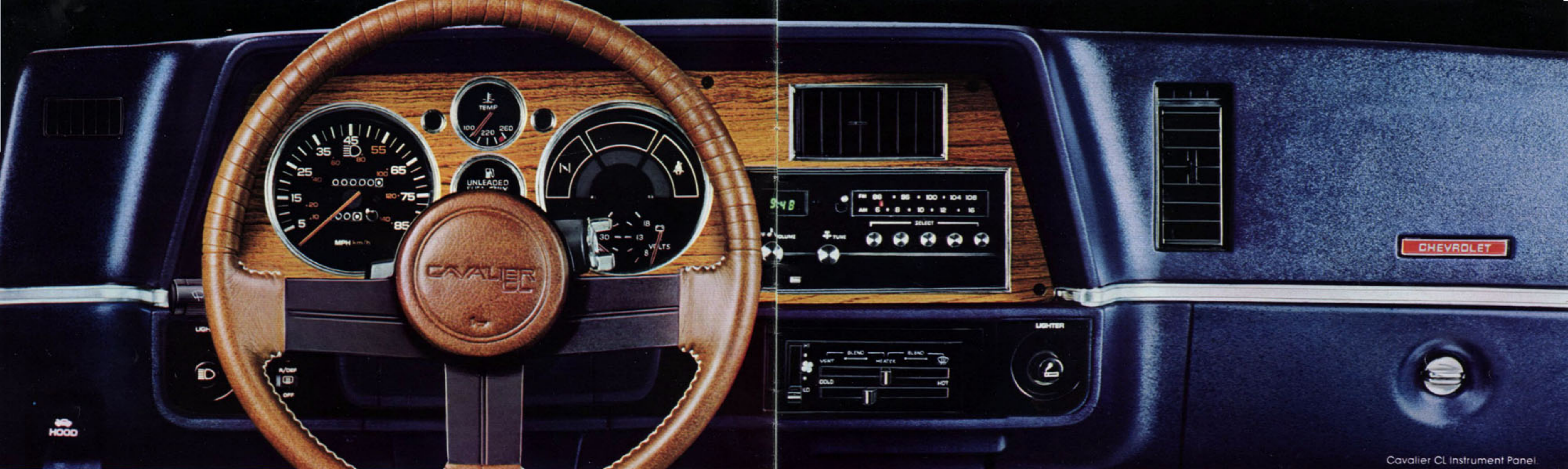
Cavalier's model lineup is complete, varied and exciting. Elegant Sedan, classy Coupe, slick Hatchback Coupe and spacious Wagon.

Four models available in two series: Cavalier and Cavalier CL. Each with the latest kind of thinking, state-of-the-art technology, design integrity and attention to detail you'd expect from the world's largest automotive manufacturer. Chevy Cavalier. Complete in every way.

**A WORD ABOUT THIS CATALOG:** We have tried to make this catalog as comprehensive and factual as possible and we hope you find it helpful. However, since the time of printing, some of the information you will find here may have been updated. Also, some of the equipment shown or described throughout this catalog is available at extra cost. Your dealer has details and, before ordering, you should ask him to bring you up to date.

The right is reserved to make changes at any time, without notice, in prices, colors, materials, equipment, specifications and models. Check with your Chevrolet dealer for complete information.

\*Use the estimated MPG for comparisons. Your mileage may differ depending on speed, distance, weather. Actual highway mileage lower.



Cavalier CL Instrument Panel.

## CAVALIER COMES COMPLETE WITH 43 STANDARD FEATURES.

Cavalier comes with the kind of comfort, convenience and engineering features that make it a pleasure to own and drive.

When you check over this list—or the sticker price—please note the 1982 Cavalier standard features that on many cars you'd have to pay extra for.

Inch for inch and pound for pound, Cavalier is a whole new way of looking at Chevy value.

1. Front-wheel drive.
2. 1.8 Liter 4-cylinder transverse engine.
3. 4-speed manual overdrive transmission.
4. Power-assisted front disc/rear drum brakes.
5. Glass-belted radial tires.
6. Computer Command Control.
7. Quick rack-and-pinion steering.
8. MacPherson-strut front suspension.
9. Push-button AM radio with dual front speakers.\*
10. Quartz digital clock (integral with radio).
11. Front stabilizer bar.
12. Freedom II maintenance-free battery.
13. Large-capacity (14-gallon) fuel tank.
14. Day/night inside rearview mirror.
15. Side window defoggers.
16. Electric rear window defogger.
17. Tri-color, segmented tail lamps with amber turn signals (except Wagon).
18. Flow-thru power ventilation system.
19. Locking gas filler door with cap holder.
20. Substantial acoustical insulation.
21. Accessible in-dash flip-down fuse panel.
22. Remote trunk/hatchback/tailgate release.
23. Body side moldings.
24. Styled steel Rally wheels.
25. Bumper rub strips.
26. Reclining contoured front seats.
27. Assist grip above each passenger door.
28. Console with rear ashtray and coin holder.
29. Plastisol® lower body stone-chip protection.
30. Color-keyed seat and shoulder belts.
31. Color-keyed carpeting.
32. Extended front seat track.
33. Column-mounted "Smart Switch."
34. Cigarette lighter and ashtray lamp.
35. Glove compartment lock.
36. Styled outside rearview mirror.
37. 31 separate anti-corrosion-treatment areas.
38. Resettable trip odometer.

39. Passenger-guard door locks.
40. Side-lift jack.
41. Double-panel construction in doors, hood and trunk lid.
42. Strong, lightweight steel bumpers (except Hatchback).
43. Audible disc brake wear sensors.

And "plus" items are on individual body styles: like a carpeted cargo floor in the Hatchback and Wagon. Or a tailored protective trunk mat in the Coupe and Sedan. See page 22 for details.

There are even more good things to enjoy with the 1982 Chevrolet Cavalier CL.

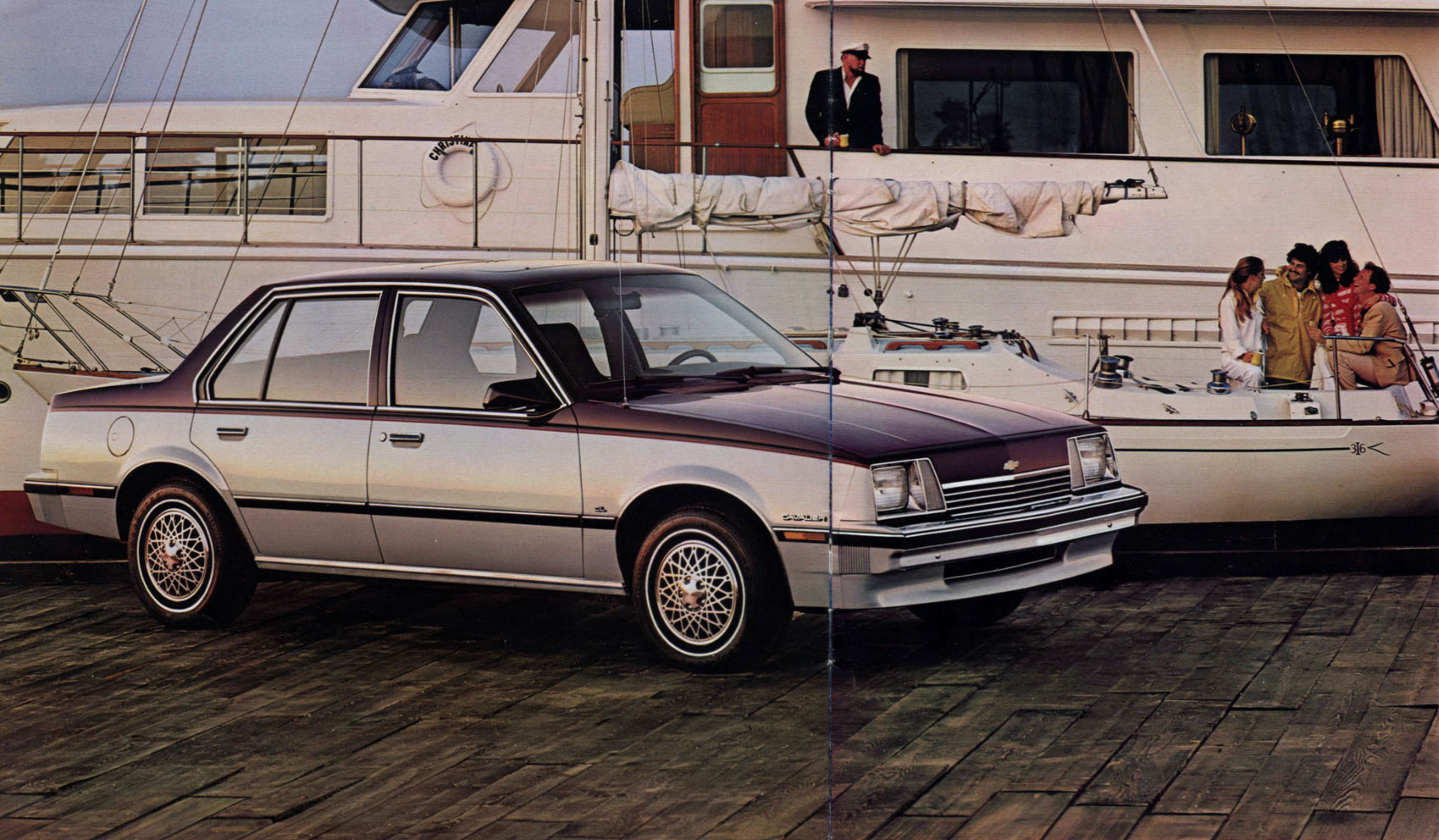
## AND YOU GET 15 MORE STANDARD FEATURES WITH THE CAVALIER CL.

1. Power steering.
2. Rear stabilizer bar.
3. Intermittent windshield wiper system.
4. Sport mirrors, left-hand remote control and right-hand manual.
5. Tinted glass.
6. Halogen headlamps.
7. CL exterior appearance group.
8. Styled Sport wheel covers.
9. Custom interior.

10. Passenger visor vanity mirror.
11. Leather-wrapped steering wheel.
12. Auxiliary lighting group.
13. AM/FM radio with dual front speakers.\*
14. Gage package.
15. Glass-belted radial white-stripe tires (blackwalls on Hatchback).

In addition, Cavalier CL Wagon and Hatchback models have a rear window wiper/washer standard. Also, a tachometer is standard on the Hatchback. For additional Cavalier/Cavalier CL features, see chart on page 22.

\*May be deleted for credit.

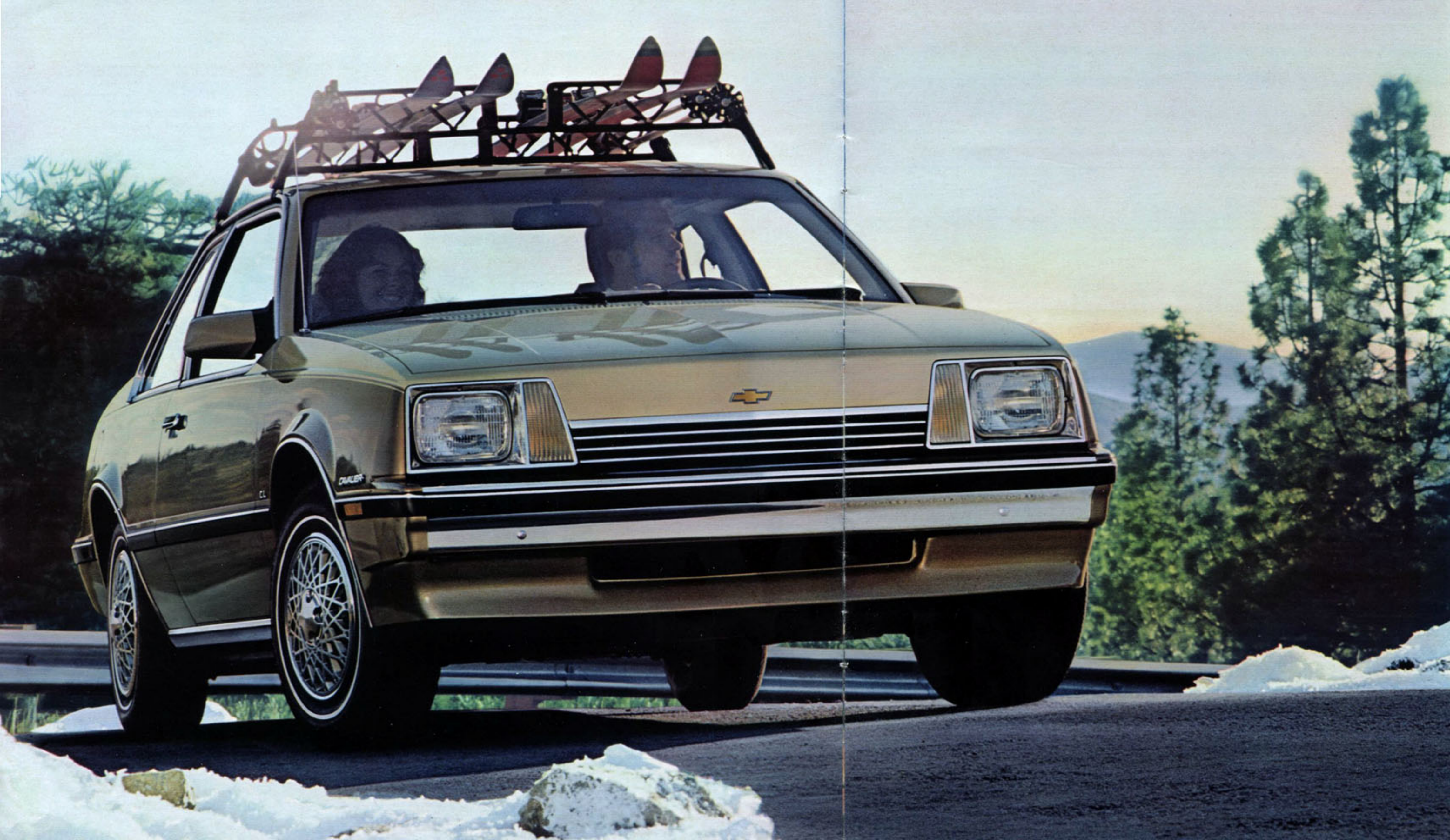


**CAVALIER CL.  
CUSTOM LUXURY  
VERSION OF THE  
COMPLETE CAR.**

On the next several pages, you'll discover the many custom luxury features of the 1982 Chevy Cavalier CL. Keep in mind that both the Cavalier CL and the Cavalier are available in four distinct body styles: 4-Door Sedan, 2-Door Coupe, 2-Door Hatchback and 4-Door Station Wagon.

**CAVALIER CL  
SEDAN.**

In the day-to-day world of in-town or suburban driving, the Cavalier CL Sedan treats you to unexpected comfort. Outside dimensions make the Cavalier easy to handle in tight city traffic or in close parking situations. Inside, the room will pleasantly surprise you. And for trips, the trunk can accommodate up to eight suitcases.



### *CAVALIER CL COUPE.*

The Cavalier CL Coupe is highlighted by a pleasing combination of driving excitement and engineering ingenuity. Like a suspension system that helps provide crisp maneuvering and a remarkably smooth ride. Coupe model features include convenient swing-out rear windows and inertia seat back locks.



### **CAVALIER CL HATCHBACK.**

The sportiest Cavalier. Our stylists created a wedge-shaped body with clean aerodynamic styling. Drag coefficient is only 0.40. And to make it especially eye-catching, the Hatchback sports a distinctive front end and sporty black accents. Other features: gage package with tachometer, swing-out rear windows and a fully carpeted load area.



### **CAVALIER CL WAGON.**

The Cavalier CL Station Wagon is loaded with capabilities. Its total interior volume (passenger and cargo area) measures much more than the Datsun 210 or 510, Mazda GLC, and Toyota Corolla wagons. Cavalier Wagons also feature a carpeted cargo floor, easy-to-lift tailgate, tailgate-ajar warning light and an integral rear air deflector. For looks...for loads... Cavalier CL Wagon.



Cavalier CL Custom Cloth Interior.

## CAVALIER CL INTERIORS.

Take a good look at the Cavalier CL Custom interior. It's designed to please you with its luxurious roominess, color-keyed plush carpeting and reclining contoured front seats. All standard. With Cavalier CL, you enjoy

refinements like an intermittent windshield wiper system. A leather-wrapped steering wheel. Tinted glass all around. Gages to keep you informed. Auxiliary lighting which includes a headlamps-on warning buzzer plus rear com-

partment, underhood, glove compartment and dome reading lamps. There's plenty of light... and quiet sound acoustics. Cavalier CL and Cavalier interiors are available in cloth or vinyl. See chart for details.

### CAVALIER AND CAVALIER CL: COLOR AND TRIM COMBINATIONS.

		Silver	Gray	Charcoal	Dk. Blue	Jade	Camel	Maroon									
EXTERIOR COLORS		INTERIOR COLORS							CUSTOM TWO-TONE COLORS		INTERIOR COLORS						
ALL MODELS									ALL MODELS								
	White	•	•	•	•	•	•	•		Dark Blue (Metallic)/Beige				•			
	Silver (Metallic)	•	•	•				•		Dark Jade (Metallic)/Light Jade (Metallic)					•		
	Black	•	•		•			•		Gold (Metallic)/Dark Gold (Metallic)							•
	Light Blue (Metallic)		•	•						Charcoal (Metallic)/Black	•	•					
	Bright Blue (Metallic)	•	•						<b>Sedan, Coupe &amp; Wagon Models Only</b>								
	Dark Blue (Metallic)	•		•						Silver (Metallic)/Charcoal (Metallic)	•	•					•
	Light Jade (Metallic)		•		•					Maroon (Metallic)/Silver (Metallic)	•						•
	Dark Jade (Metallic)	•		•						Beige/Light Brown (Metallic)							•
	Gold (Metallic)		•				•			Dark Blue (Metallic)/Light Blue (Metallic)				•			
	Light Yellow		•				•		<b>Hatchback Only</b>								
	Beige			•			•	•		Silver (Metallic)/Charcoal (Metallic)	•	•					
	Red	•	•					•		Silver (Metallic)/Red	•	•					
	Maroon (Metallic)	•						•		Silver (Metallic)/Maroon (Metallic)	•						•
	Charcoal (Metallic)	•	•							Black/Silver (Metallic)	•	•					
										Black/Gold (Metallic)				•			
										Light Blue (Metallic)/Dark Blue (Metallic)					•		
										Bright Blue (Metallic)/Black				•			
										Gold (Metallic)/White							•

Reclining contoured front seats are standard for Cavalier and Cavalier CL. The Cavalier CL interior includes high-contoured custom seats, custom door and quarter trim design, and quiet sound acoustics.

Two-Tone exterior features accent color on lower body sides, lower deck lid, bumper extensions and front valance. Includes body accent stripe separating the upper and lower colors. Second color listed is accent color.



# CAVALIER. STANDARD VERSION OF THE COMPLETE CAR.

Four for the road.  
All with front-wheel drive, new 1.8 Liter 4-cylinder engine, 4-speed manual transmission with overdrive, power front disc

brakes, rack-and-pinion steering, MacPherson-strut front suspension and front stabilizer bar.  
And they're all set to match your kind of driving in distinct

body styles. There's the smartly styled 2-Door Coupe. The rakish 2-Door Hatchback. The elegant 4-Door Sedan. And the nifty looking and loading 4-Door Station

Wagon. Four great Cavaliers. Each one is a value-for-the-money car with a pleasing blend of performance, roadability, comfort, ride and quality. Plus the

impressive list of 43 standard features on pages 4-5.  
Now comes the hard part: picking the 1982 Chevy Cavalier best suited to you.



Cavalier Coupe.



Cavalier Hatchback.



Cavalier Sedan.

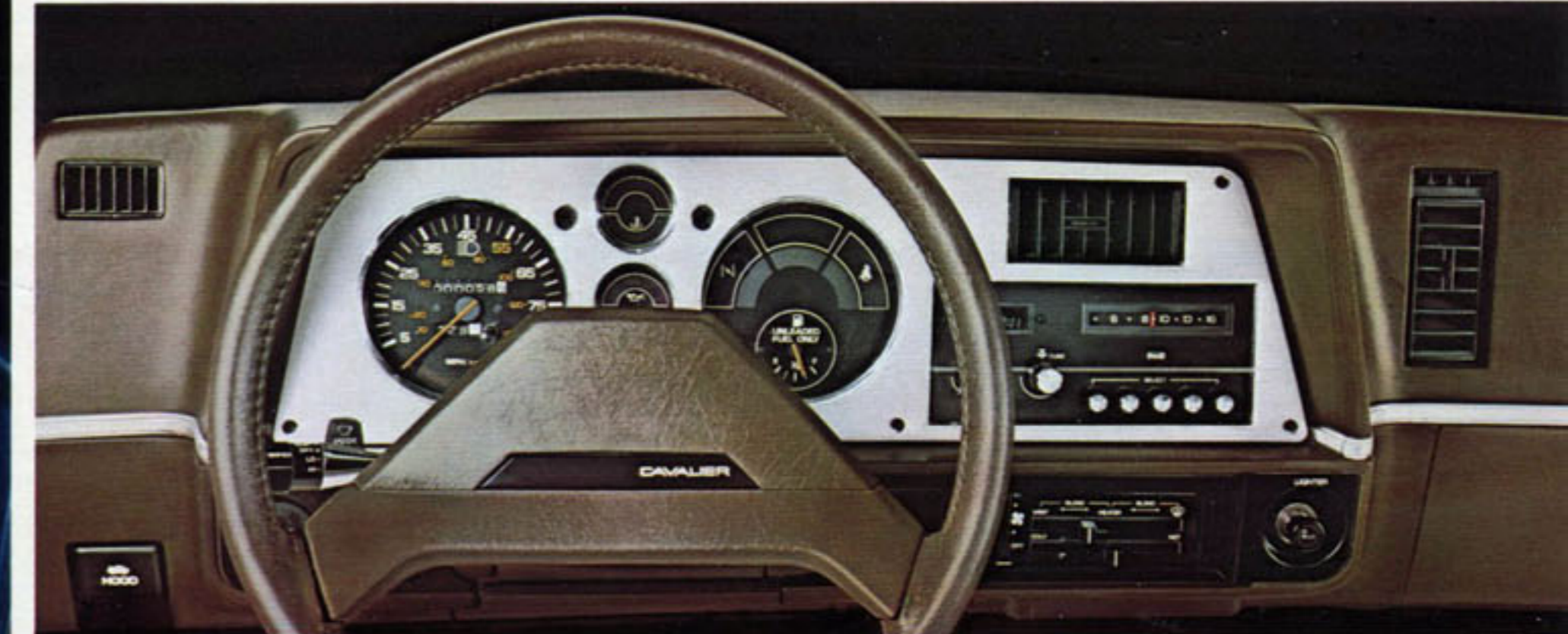


Cavalier Wagon.



Cavalier Cloth Interior.

CAVALIER INTERIORS.



The Cavalier instrument panel is both good-looking and functional. Everything shown is standard equipment.



Cavalier standard vinyl interior. In between the front seats is a floor console with handy storage area, coin tray and rear ashtray.



Cavalier's contoured front seats recline individually. They'll accommodate a variety of seating positions for driver and passenger.



The Cavalier Sedan generously offers 13.6 cubic feet of luggage capacity. And there's a protective trunk mat.



The Cavalier Hatchback has up to 34.5 cubic feet of carpeted cargo area with the rear seat down.



The Cavalier Station Wagon has a whopping 64.4 cubic feet of carpeted cargo area with the rear seat down.

# CAVALIER AND CAVALIER CL STANDARD FEATURES.

Cavalier sets a standard for being the most complete new car we've ever introduced.

## 1. Resettable Trip Odometer.

Keeps track of your trip miles automatically.



1.

## 2. Console and Shifter.

A floor console with a 4-speed manual overdrive transmission is standard. The console houses gearshift, parking brake and features little touches that add up, like a storage area, coin tray and an ashtray in the rear.



2.

## 3. AM Radio with Dual Speakers and Integral Quartz Digital Clock.

Music and time are right at your fingertips. (May be deleted for credit.)



3.

## 4. Electric Rear Window Defogger.

Helps keep the rear window free of frost and mist.



4.

## 5. Remote Trunk/Hatch/Tailgate Release.

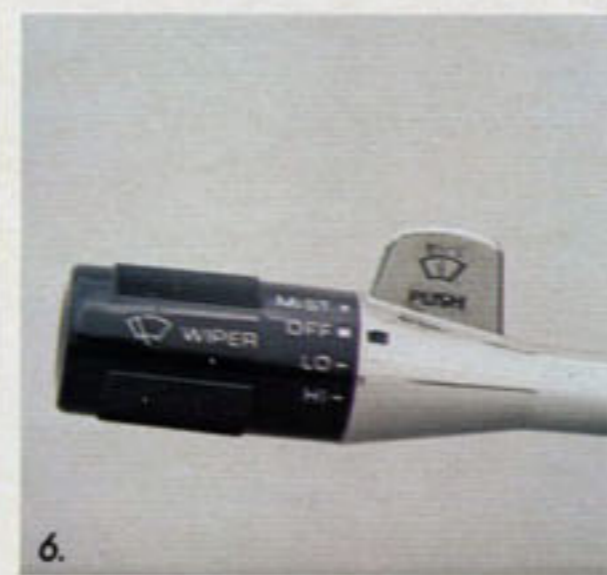
Open the trunk/hatch/tailgate of your Cavalier with a handy release located in the glove box.



5.

## 6. "Smart Switch."

Controls many important functions like windshield washing and wiping, hi/lo beam and turn signal switching.



6.

## 7. Passenger Assist Grip.

Located above all passenger doors. Makes for easy entrances or exits.



7.

## 8. Styled Steel Rally Wheels.

A sporty look for your Cavalier.



8.

## 9. Locking Gas Filler Door.

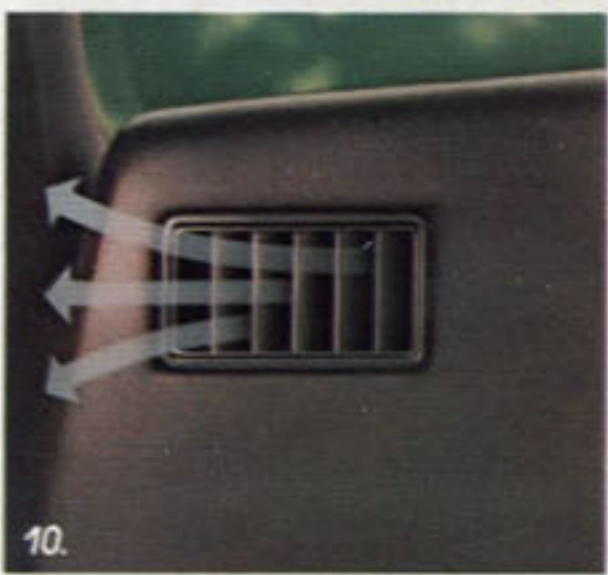
Only your key opens it. You'll also appreciate the handy cap holder.



9.

## 10. Side Window Defogger.

Helps keep the side windows clear of frost and mist.



10.

## 11. In-dash Fuse Panel.

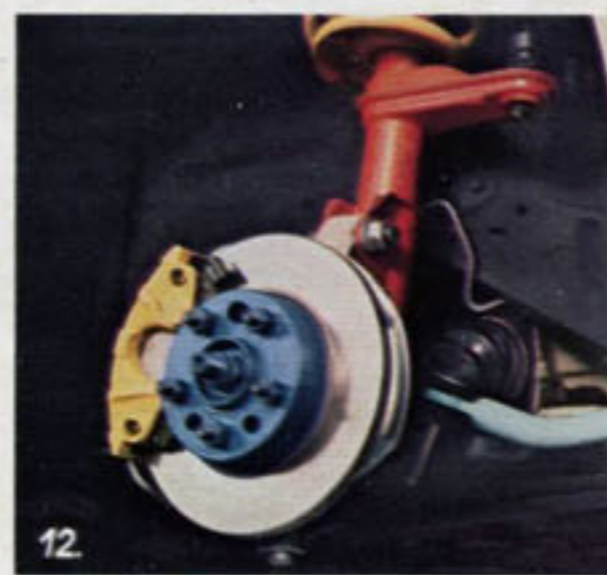
A flip-down panel located under the dash to the left of the steering column makes fuse replacement a snap.



11.

## 12. Power Front Disc Brakes and Front Stabilizer Bar.

Disc brakes for smooth, steady stops and a front stabilizer bar to help control sway on the curves.



12.

## Cavalier Power Teams

Engine	Ordering Code	Displacement (cu. in.)	Transmission Availability	
			4-Spd. Manual	Automatic
1.8 Liter 2-Bbl. L4 (A)	L46	112	Std.	EC

Std. — Standard. EC — Optional at Extra Cost  
(A) Produced by GM—Chevrolet Motor Division

The new 1.8 Liter engine features a high-mounted, in-block camshaft. Modern engineering technology has been used in the valve train to give it high RPM characteristics. And there's a fast burn combustion chamber for efficient operation.

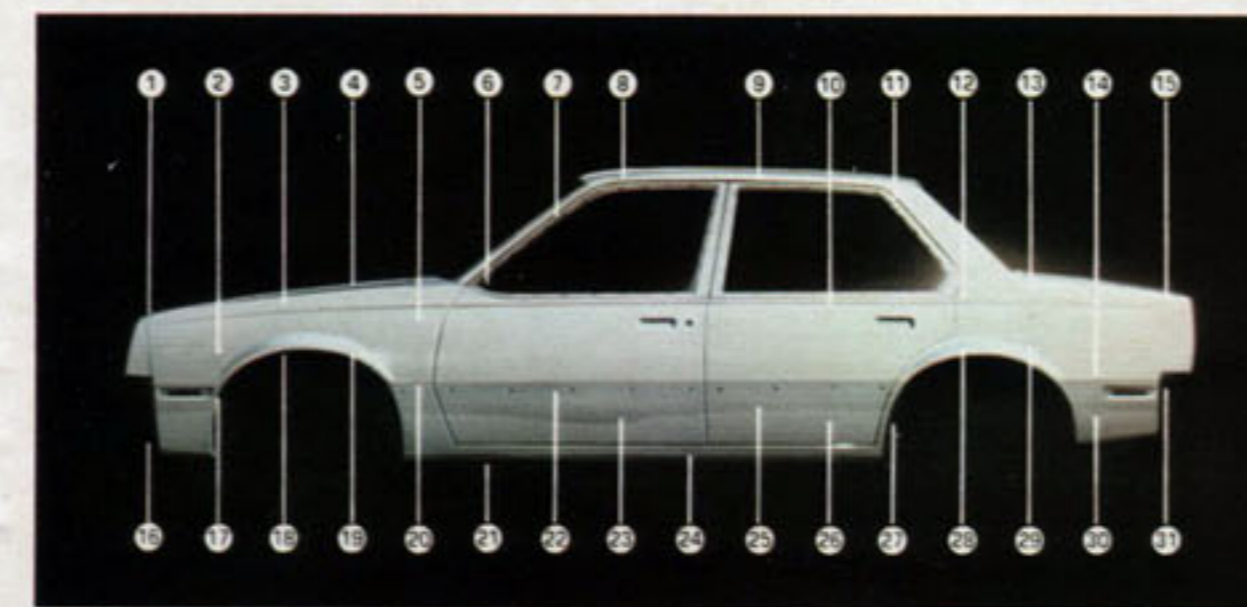
## Corrosion Protection

Believing that it is better to stop something before it starts, we have engineered out of the Cavalier many of the areas vulnerable to corrosion. In addition, chemical actions that cause corrosion were analyzed and materials like zinc-rich pre-coated metals were used to block or counteract them. Then, every square inch of exposed surface was treated—with many areas like hoods and fenders receiving special attention. There's a thick band of Plastisol\* around the rocker panels to provide stone-chip protection. And the entire body has been chemically treated for corrosion resistance and primer adhesion.

In fact, our anti-corrosion treatments include 31 areas to help protect your Cavalier from the elements.

In addition, Chevrolet offers a Three-Year Perforation-From-Corrosion Limited Warranty. Exhaust system components not included. See your Chevrolet dealer for details on other limitations.

## 31 Anti-corrosion Treatment Areas



## Safety Features

### Occupant Protection

Manual lap/shoulder belts for driver and right front passenger (driver side includes visual and audible warning system) • Manual lap belts with push-button buckles for rear passenger positions • Energy-absorbing steering column • Passenger guard door locks • Safety door latches and stamped steel hinges • Folding seat back latches • Energy-absorbing padded instrument panel and front seat back tops • Laminated windshield/tempered side and rear glass • Safety armrests • Identification symbols for controls and displays.

### Accident Avoidance

Side marker lights and reflectors • Parking lamps that illuminate with headlamps • Four-way hazard warning flasher • Backup lights • Lane-change feature in direction signal control • Windshield defrosters, washer and dual-speed wipers • Vinyl-edged inside mirror • Outside rearview mirror • Dual master cylinder brake system with warning light • Starter safety switch • Dual-action safety hood latches.

### Anti-Theft

Anti-theft ignition key reminder buzzer • Anti-theft steering column lock • Inside hood release.

## A WORD ABOUT ENGINES

Chevrolets are equipped with GM-built engines produced by various divisions. Please refer to the Cavalier Power Teams chart or see your dealer for details.

## Long Recommended Service Intervals\*

Engine Oil	12 months or 7,500 miles
Oil Filter	12 months or 7,500 miles; every 15,000 miles thereafter
Spark Plugs	30,000 miles
Chassis Lubrication	12 months or 7,500 miles
Automatic Transmission Fluid Change	Every 100,000 miles
Air Cleaner Element	50,000 miles

\*See Owner's Manual for conditions requiring more frequent intervals.

## Dimensions (inches)

Exterior	4-Door Sedan	2-Door Coupe	Hatch-back Coupe	4-Door Station Wagon
Wheelbase	101.2	101.2	101.2	101.2
Length (overall)	172.4	170.4	173.5	173.0
Width (overall)	66.3	66.0	66.0	66.3
Height (overall)	53.3	51.4	51.4	53.3
Tread—Front	55.4	55.4	55.4	55.4
Tread—Rear	55.2	55.2	55.2	55.2

## Interior

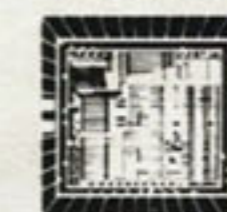
Head Room—Front	38.6	37.7	37.6	38.3
Head Room—Rear	37.9	36.5	36.5	38.7
Leg Room—Front	42.2	42.0	42.0	42.1
Leg Room—Rear	34.3	31.2	30.9	33.1
Shoulder Room—Front	53.7	53.7	53.7	53.7
Shoulder Room—Rear	53.7	52.5	52.5	53.7
Hip Room—Front	48.9	49.1	49.1	48.9
Hip Room—Rear	48.9	49.8	49.1	49.0
Luggage/Cargo Capacity (cu. ft.)	13.6	13.2	16.0*	34.2**
Max. Cargo Height				33.3
Max. Cargo Length				67.3
Max. Cargo Width				52.9 (@ front)

Width Between Wheelhousings

Fuel Tank Capacity (gals.)	14	14	14	14
----------------------------	----	----	----	----

\*34.5 with rear seat down

\*\*64.4 with rear seat down



## COMPUTER COMMAND CONTROL

Chevrolet Cavalier includes a sophisticated, thoroughly tested on-board computer as standard equipment. It gives you a clean-burning gasoline engine. And impressive fuel economy.

That's just the beginning of the benefits. By continuously monitoring your engine's functions, Computer Command Control fine tunes the performance of your engine under all normal operating conditions—continuously—as you drive. Air-fuel mixtures are constantly adjusted to driving conditions, and the system helps compensate for altitude, barometric pressure and temperature changes. And when compared to earlier engines, the number of recommended maintenance operations is actually reduced.

Computer Command Control is also self-diagnostic. In fact, should a malfunction occur, the system will help diagnose it and pinpoint the problem for your Chevrolet service technician. Another benefit of Computer Command Control is that it is covered by the 5-year/50,000-mile emissions system warranty. Ask your dealer for details.

# STANDARD FEATURE COMPARISON.

	CAVALIER CL			CAVALIER		
	4-Dr. Sedan 2-Dr. Coupe	2-Dr. Hatchback Coupe	4-Dr. Wagon	4-Dr. Sedan 2-Dr. Coupe	2-Dr. Hatchback Coupe	4-Dr. Wagon
Power-assisted front disc/rear drum brakes	S	S	S	S	S	S
Glass-belted radial tires	S	S	S	S	S	S
Power steering	S	S	S	EC	EC	EC
Large-capacity (14-gallon) fuel tank	S	S	S	S	S	S
Freedom II maintenance-free battery	S	S	S	S	S	S
Computer Command Control	S	S	S	S	S	S
Thermostatically controlled engine electric fan	S	S	S	S	S	S
Glass-belted radial white-stripe tires	S	EC	S	EC	EC	EC
Styled steel Rally wheels	NA	NA	NA	S	S	S
Styled Sport wheel covers	S	S	S	NA	NA	NA
Bright rocker panel moldings	S	S	S	NA	NA	NA
Integral rear air deflector	NA	NA	S	NA	NA	S
Locking gas filler door w/cap holder	S	S	S	S	S	S
31 anti-corrosion-treatment areas	S	S	S	S	S	S
Body side moldings	S	S	S	S	S	S
Plastisol® lower body stone-chip protection	S	S	S	S	S	S
Bumper rub strips	S	S	S	S	S	S
Styled outside rearview mirror	NA	NA	NA	S	S	S
Sport mirrors, LH remote, RH manual	S	S	S	EC	EC	EC
Halogen headlamps	S	S	S	EC	EC	EC
Rear window wiper/washer	NA	S	S	NA	EC	EC
Electric rear window defogger	S	S	S	S	S	S
Side window defoggers	S	S	S	S	S	S
Assist grip above each passenger door	S	S	S	S	S	S
Leather-wrapped steering wheel	S	S	S	NA	NA	NA
Inside hood release	S	S	S	S	S	S
Day/night inside rearview mirror	S	S	S	S	S	S
Sun visor strap for maps and papers	S	S	S	S	S	S
Tinted glass	S	S	S	EC	EC	EC
Intermittent windshield wiper system	S	S	S	EC	EC	EC
Auxiliary lighting group	S	S	S	EC	EC	EC
Accessible in-dash flip-down fuse panel	S	S	S	S	S	S
Push-button AM radio w/dual front speakers and integral quartz digital clock*	NA	NA	NA	S	S	S
AM-FM radio w/dual front speakers and integral quartz digital clock*	S	S	S	EC	EC	EC
Resettable trip odometer	S	S	S	S	S	S
Instrument panel gages	S	S	S	EC	S	EC
Tachometer	EC	S	EC	EC	EC	EC
Glove compartment lock	S	S	S	S	S	S
Flow-thru power ventilation system	S	S	S	S	S	S
Column-mounted "Smart Switch"	S	S	S	S	S	S
Passenger visor vanity mirror	S	S	S	EC	EC	EC
Remote trunk/hatch/tailgate release	S	S	S	S	S	S
Cigarette lighter and ashtray lamp	S	S	S	S	S	S

S=Standard. EC=Extra Cost. NA=Not Available. LH=Left Hand. RH=Right Hand. \*May be deleted for credit.

# OPTIONS.



## 1. Automatic Transmission.

Console-mounted shifter.

## 2. Sunroof.

Easily removed to let fresh air in.

## 3. Rear Window Wiper/Washer.

Helps keep the rear window of the Wagon or Hatchback clean.

## 4. Automatic Speed Control.

Automatically maintains a constant speed. With "Resume Speed" feature.

## 5. Power Door Locks.

Lock all the doors from the driver's seat with a touch of a button.

## 6. Multi-purpose Roof Carrier.

Adds more cargo carrying capability.

## 7. Cargo Security Cover.

Helps keep your valuables out of sight. Hatchback models only.

## 8. F41 Sport Suspension.

Includes rear stabilizer bar, special springs and heavy-duty shocks.

## 9. Air Conditioning.

Adds refreshing coolness to your driving and is a plus item at trade-in time.

## 10. Tachometer.

For more precise knowledge of shift points.

## 11. GM-Delco AM/FM Stereo Radio w/Stereo Cassette Tape.

Enjoy full stereo sound via radio or with cassette tape. Includes digital clock.

## Other Available Options.

Aluminum wheels.  
Door edge guards.  
Heavy-duty battery.  
Heavy-duty cooling.  
Front and rear bumper guards.  
Front and rear floor mats.  
Illuminated R.H. visor vanity mirror.  
Comfortilt steering wheel.  
Power windows.  
Six-way power seat.  
Pin striping.  
Sport striping.  
Twin electric remote sport mirrors.

## GM-Delco sound systems:

AM/FM stereo radio w/digital clock.  
AM/FM stereo radio w/8-track stereo tape and digital clock.  
Rear seat speaker (w/monaural radios).  
Dual rear speakers (w/monaural radios).

## Tires:

P195/70R13 steel-belted radial ply blackwall, white-stripe or white-lettered.  
P195/70R13 puncture-sealant white-stripe.



The GM Continuous Protection Plan offers service protection in addition to that provided by GM's new vehicle limited warranty. Ask your dealer about it. Coverage available only in the U.S.A. and Canada.

Also, see your Chevrolet dealer for details and information about GM's new 24-month/24,000-mile Power-Protection-Plus Limited Warranty.

## A WORD ABOUT ASSEMBLY, COMPONENTS AND OPTIONAL EQUIPMENT IN THESE CHEVROLETS.

The Chevrolets described in this catalog are assembled at facilities of General Motors Corporation operated by the GM Assembly Division. These vehicles incorporate thousands of different components produced by various divisions of General Motors and by various suppliers to General Motors. From time to time during the manufacturing process, it may be necessary, in order to meet public demand for particular vehicles or equipment, or to meet federally mandated emissions, safety and fuel economy requirements, or for other reasons, to produce Chevrolet products with different components or differently sourced components than initially scheduled. All such components have been approved for use in Chevrolet products and will provide the quality performance associated with the Chevrolet name.

With respect to extra-cost optional equipment, make certain you specify the type of equipment you desire on your vehicle when ordering it from your dealer. Some options may be unavailable when your car is built. Your dealer receives advice regarding current availability of options. You may ask the dealer for this information. GM also requests the dealer to advise you if an option you ordered is unavailable. We suggest that you verify that your car includes the optional equipment you ordered or, if there are changes, that they are acceptable to you.

*CAVALIER'S  
MODEL LINEUP  
IS COMPLETE.*

