

1983 CHEVY TRUCKS

TOUGH CHEVY TRUCKS ARE TAKING CHARGE



CHEVROLET



FLEETSIDE PICKUP

CHEVY PICKUPS

No. 1 in America.

It's true. Chevy Pickups are number one in economy with the largest choice of pickups EPA-rated at 20 MPG or better. Number one in selection with 34 models in all. Number one in service with the largest dealer/service network in the country. And number one in diesels with 28 different pickups with available diesel power. Full-size Chevy Pickups, for example, can be ordered with the available 6.2 Liter V8 Diesel — already the most popular truck diesel in America.

This tough-towing, big-hauling, fuel-sipping engine has already found its way into over 100,000 Chevy trucks in its first year as an optional light-duty truck engine. Rated at 130 SAE net HP, the 6.2 Liter Diesel features rugged V8 construction for a variety of

applications in C and K 10-20-30 Series full-size Chevy Pickup models.

2WD CHEVY C10 PICKUP
6.2 LITER (379 CU. IN.)
DIESEL V8 AND 4-SPEED
MANUAL TRANS. w/OD:

31 EST. HWY. **23** EPA EST. MPG

California estimates not available at time of printing. See the EPA wall poster at your dealer's showroom. Use estimated MPG for comparisons. Your mileage may differ depending on speed, distance, weather. Actual highway mileage lower.

A WORD ABOUT ENGINES. Some Chevrolet trucks are equipped with engines produced by other GM divisions, subsidiaries, or affiliated companies worldwide. See your dealer for details.

3-Year/50,000-Mile Power-Protection-Plus Limited Warranty on 6.2 and 5.7 Liter Diesel Engines. See your Chevy dealer for full details.



STEPSIDE PICKUP



OPTIONAL SCOTTSDALE INTERIOR



4X4 CHEVY S-10

4X4 CHEVY S-10 PICKUP

It's a revolution.

The new Chevy S-10 Pickup with four-wheel drive features a revolutionary new 4WD system called Insta-Trac. It's designed so that you can shift from rear-wheel drive to 4-wheel-drive high — and back — at any speed, without stopping. It's a great convenience and a fuel-saver, too. The 4X4 S-10 also features a new inde-



S-10 MAXI-CAB MODEL

4X4 CHEVY S-10 PICKUP
2.0 LITER (121 CU. IN.) I4
AND 5-SPEED MAN. TRANS.:

31 EST. HWY. **22** EPA EST. MPG

California estimates not available at time of printing. See the EPA wall poster at your dealer's showroom. Use estimated MPG for comparisons. Your mileage may differ depending on speed, distance, weather. Actual highway mileage lower.

pendent front suspension with torsion bars for real ground-grabbing traction. So, go on. Test drive the new 4X4 Chevy S-10, shift on the run and see how it feels. You're going to wonder how you ever drove off-road without it. S-10 is also available as a two-wheel-drive model.

NEW S-10 MAXI-CAB

The front seat in S-10's new Maxi-Cab model is just as roomy as the one in the regular model, and there's a large storage area behind it. Included with the Tahoe and Sport trim, and available with the Standard or Durango trim, are two side-mounted jump seats. They're located

behind two front bucket seats and can accommodate two passengers or be folded up and out of the way. Available in two- or four-wheel drive, the S-10 Maxi-Cab is a great idea for anyone who needs added passenger seating or added storage room.



4X4 S-10 BLAZER

THE ALL-NEW 4X4 S-10 BLAZER

There's never been an off-roader like it before.

It's a totally new Blazer, in a totally new size. The S-10 Blazer has the same revolutionary Insta-Trac 4WD system and independent front suspension as the '83 4X4 Chevy S-10 Pickup. There's also optional seating for up to four in the big, roomy S-10 Blazer cab. And with the optional rear seat folded down, there's 68.6 inches of cargo length — more than any *full-size* sport utility vehicle. The new-size S-10 Blazer. Rugged, dependable, fuel-conscious,

stylish, energetic. There's no easier way to go off-road. A two-wheel-drive model is also available.

4X4 CHEVY S-10 BLAZER
2.0 LITER (121 CU. IN.) L4
AND 5-SPEED MAN. TRANS.:

31 EST. HWY. **22** EPA EST. MPG

California estimates not available at time of printing. See the EPA wall poster at your dealer's showroom. Use estimated MPG for comparisons. Your mileage may differ depending on speed, distance, weather. Actual highway mileage lower.



TAHOE INTERIOR



LIGHTED ACTION DISPLAY ON 4WD SHIFT CONSOLE



CHEVY S-10 PICKUP

2WD CHEVY
S-10 PICKUP

A great American success story.

In one short year this new-size, high-mileage pickup has become the hottest-selling new truck in Chevy history. Chevy S-10 has captured America's imagination and given rise to a new spirit among pickup buyers. Not surprising when you consider S-10's optional V6 power, a new 5000-lb. maximum towing capacity (when properly equipped), its bold good looks and its comfortable interior. For the installation of special bodies,

the S-10 is offered as a Chassis-Cab model with GVWRs up to 4600 lbs. There's never been a truck like it before.

2WD CHEVY S-10 PICKUP		
1.9 LITER (119 CU. IN.) L4 AND 4-SPEED MAN. TRANS.:		
39	EST. HWY.	27
		EPA EST. MPG
<p>California estimates not available at time of printing. See the EPA wall poster at your dealer's showroom. Use estimated MPG for comparisons. Your mileage may differ depending on speed, distance, weather. Actual highway mileage lower.</p>		



SPORT INTERIOR WITH SPORT CLOTH SEAT TRIM

CHEVY VAN

**Now available:
America's most
popular truck diesel.**

For 1983, tough Chevy Van offers optional 6.2 Liter Diesel power on all G20 and G30 models. Now you can carry up to 296 cu. ft. of cargo on long-wheelbase models quite efficiently. Also new for '83 are the Standard and Deluxe front appearance packages which vary

CHEVY G20 VAN
6.2 LITER (379 CU. IN.)
DIESEL V8 AND 4-SPEED
MAN. TRANS. w/OD:

31 EST. HWY. **23** EPA EST. MPG

California estimates not available at time of printing. See the EPA wall poster at your dealer's showroom. Use estimated MPG for comparisons. Your mileage may differ depending on speed, distance, weather. Actual highway mileage lower.



CHEVY VAN

according to model selected. The 1983 Chevy Van is a winner. A rugged, thoroughly tested and proven truck, with diesel power available. The 6.2 Liter Diesel in a G20 Chevy Van offers up to 24% better fuel efficiency than a 5.0 Liter (305 Cu. In.), 4-barrel V8 gas engine in the same vehicle. Six-cylinder gasoline (shown above) and V8 gasoline models are also available.



CHEVY VAN INTERIOR

CHEVY SPORTVAN

**Chevy's No. 1 space
shuttle goes diesel.**

What a super truck for ride-pooling. Available 6.2 Liter Diesel power in G20 or G30 models, and available seating for up to twelve in G30 models. Six-cylinder and V8 gasoline engines also available.

CHEVY G20 SPORTVAN
6.2 LITER (379 CU. IN.)
DIESEL V8 AND 4-SPEED
AUTO. TRANS. w/OD:

30 EST. HWY. **20** EPA EST. MPG

California estimates not available at time of printing. See the EPA wall poster at your dealer's showroom. Use estimated MPG for comparisons. Your mileage may differ depending on speed, distance, weather. Actual highway mileage lower.



DIESEL SPORTVAN



SPORTVAN INTERIOR

CHEVY

SUBURBAN

The Superspacious Superwagon.

Now with rugged, dependable, optional 6.2 Liter Diesel power, Chevy's Superwagon moves up to 13,500 lbs., including itself, passengers, cargo, equipment and trailer, when properly equipped.* That's more towing power than any ordinary wagon. There's also a handsome exterior with a



DIESEL SUBURBAN

2WD CHEVY SUBURBAN
6.2 LITER (379 CU. IN.)
DIESEL V8 AND 4-SPEED
AUTO. TRANS. w/OD:

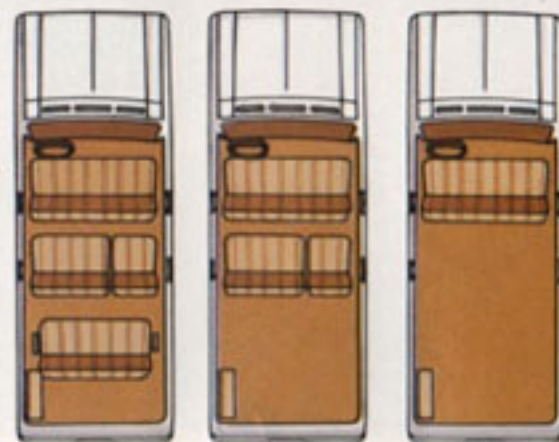
30 EST. HWY. 20 EPA EST. MPG

California estimates not available at time of printing. See the EPA wall poster at your dealer's showroom. Use estimated MPG for comparisons. Your mileage may differ depending on speed, distance, weather. Actual highway mileage lower.

new Standard and Deluxe front appearance and a comfortable interior. Add them together and you have Chevy Suburban for 1983. Bold, capable, fuel-efficient, tough. V8 gasoline engine also available. Suburban's standard front bench seat is wide enough to handle three people, and

the optional 2/3-1/3 split second seat offers room for three more. It can easily be folded down to create a cargo deck all the way to the tailgate. A removable third seat is also available.

*15,500 lbs. on C20 gasoline models.



FULL-SIZE CHEVY 4WD BLAZER

Chevy's ultimate off-road animal.

For 1983, Chevy continues to be the only sport utility vehicle to offer an optional 6.2 Liter Diesel in addition to standard gasoline power (shown at right)*. There's also a new Standard and Deluxe front appearance on this tough, full-size 4WD Blazer, and added corrosion protection. In addition, Blazer features standard automatic-locking front hubs and an optional Quad-Shock off-road handling package. Coupled with the optional 6.2 Liter Diesel, Blazer's tough-truck build makes this tough, roomy vehicle a great way to get off-road.



4X4 BLAZER

To obtain EPA fuel economy estimates for Chevrolet light-duty trucks, check the wall poster at your dealer's showroom.



OPTIONAL SILVERADO INTERIOR

*Excludes other GM products.

CHEVY
EL CAMINO

The only pickup
of its kind*

It's the only hardworking luxury pickup of its kind.* And now El Camino offers an optional 5.7 Liter Diesel engine in its lineup. Talk about multiplying value and versatility! Of course, El Camino retains its rugged pickup appeal with gross payloads up to 1250 lbs., including cargo, equipment and passengers. Towing capacities up to 5000 lbs., including trailer, cargo and equipment when properly equipped. And 35.5 cu. ft. of cargo space out back. In addition, El Camino remains one fine, sporty-looking vehicle. It's the right power, the right prestige, and quite possibly the right pickup for you.



EL CAMINO CONQUISTA



EL CAMINO INTERIOR

For information on any new Chevy truck . . . see your Chevy dealer for a complete selection of 1983 Chevy truck catalogs. They cover the new-size Chevy S-10 Blazer ■ full-size 4X4 Blazer ■ Chevy LUV ■ Chevy S-10 Pickup ■ full-size Chevy Pickup ■ Suburban ■ El Camino ■ Van/Sportvan ■ all Light-Duty Chevys ■ all Medium-Duty Chevys and ■ the Chevy Recreation & Trailering Guide.

*Excludes other GM products.

CHEVY SERIES 12
DIESEL LUV

Chevy's most
economical truck.

The sleek Series 12 Chevy Light Utility Vehicle is very good news for the value-minded.

All two-wheel-drive LUV models sport a 2.2 Liter (136.6 Cu. In.) Diesel engine and a 5-speed manual transmission with overdrive as standard. (4WD model also available.)



4X4 SERIES 12 DIESEL LUV



OPTIONAL MIKADO INTERIOR

2WD DIESEL LUV
FEDERAL

44 EST. HWY. 32 EPA EST. MPG

CALIFORNIA

44 EST. HWY. 33 EPA EST. MPG

Use estimated MPG for comparisons. Your mileage may differ depending on speed, distance, weather. Actual highway mileage lower.

The right is reserved to make changes at any time, without notice, in prices, colors, materials, equipment, specifications and models. Check with your Chevrolet dealer for complete information.

Tires supplied by various manufacturers.

LET'S GET IT TOGETHER.  **BUCKLE UP!**

A VARIETY OF WAYS TO GET YOUR JOB DONE.



2WD S-10



4X4 S-10



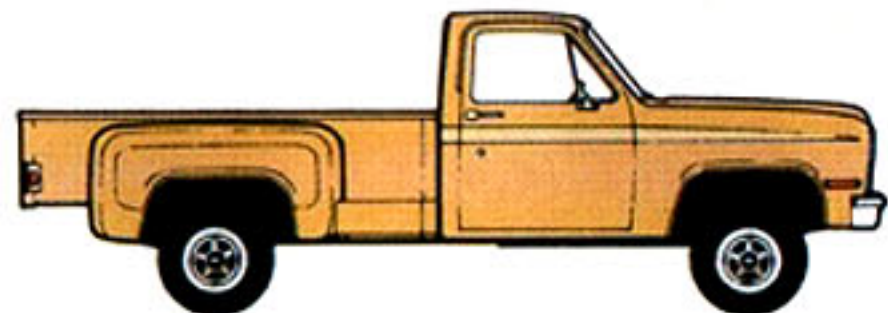
S-10 MAXI-CAB



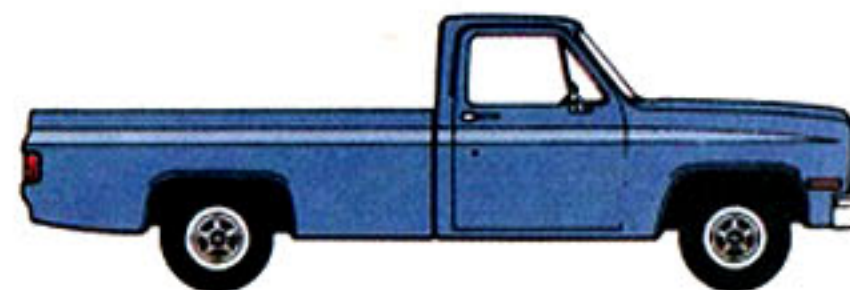
2WD S-10 BLAZER



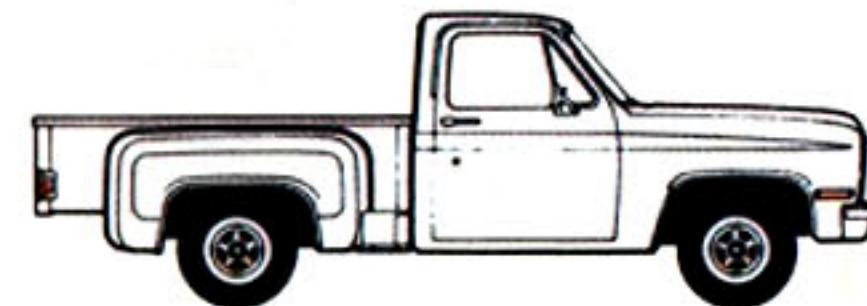
4X4 S-10 BLAZER



STEPSIDE PICKUP (8-FT. BOX)



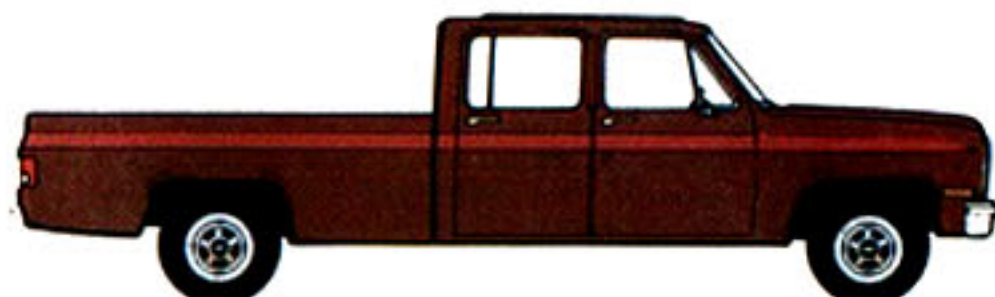
FLEETSIDE PICKUP (8-FT. BOX)



STEPSIDE PICKUP (6 1/2-FT. BOX)



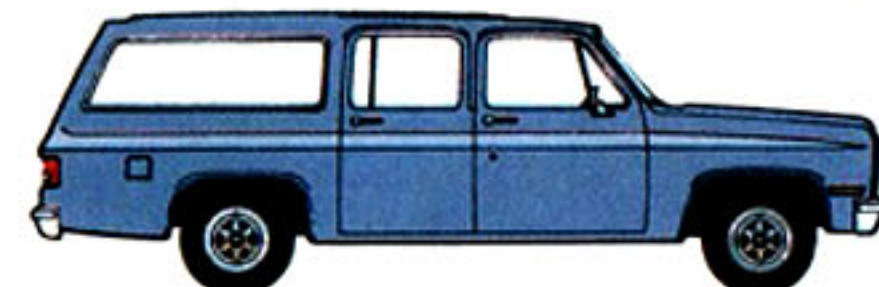
FLEETSIDE PICKUP (6 1/2-FT. BOX)



CHEVY CREW CAB PICKUP



BIG DOOLEY



SUBURBAN



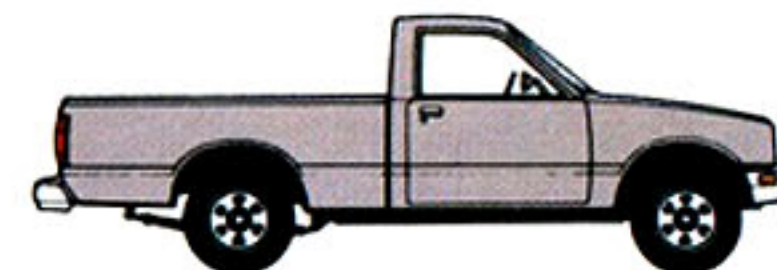
FULL-SIZE 4X4 BLAZER



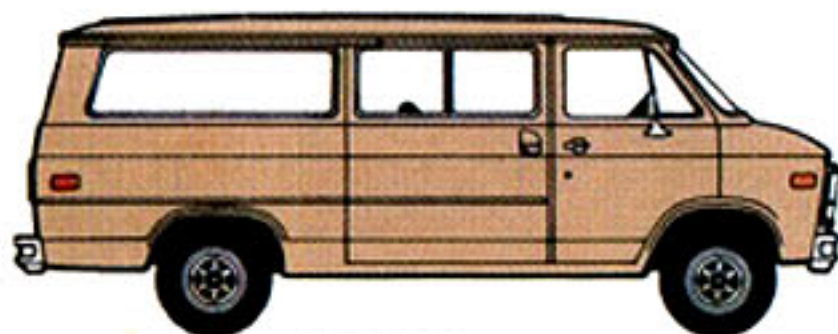
EL CAMINO



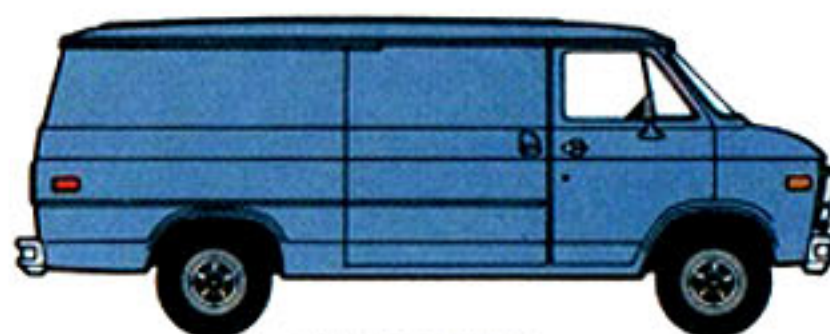
EL CAMINO SUPER SPORT



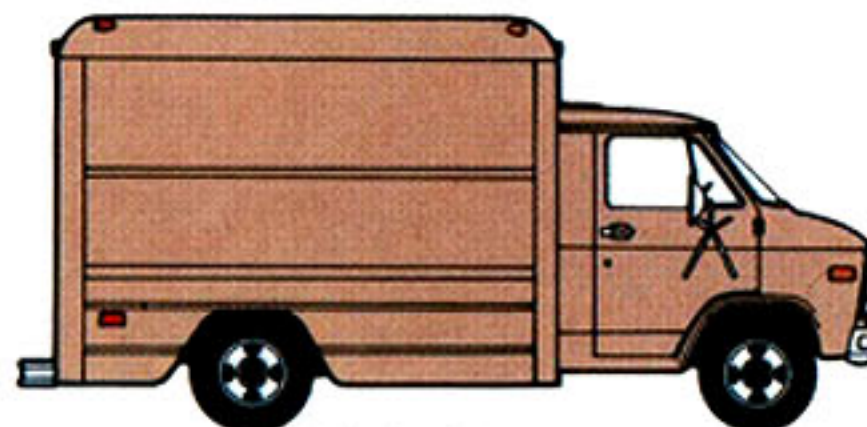
4X4 DIESEL LUV



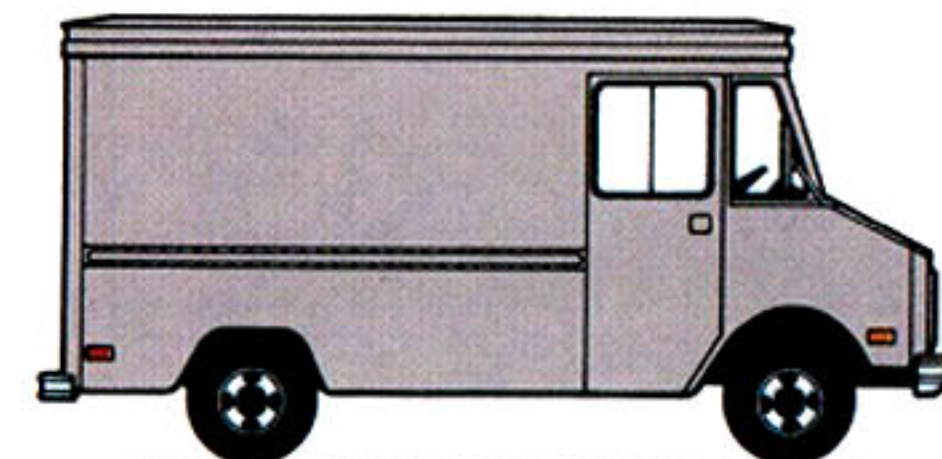
SPORTVAN



CHEVY VAN



HI-CUBE VAN



STEP-VAN (ALUMINUM OR STEEL)

Information regarding available options and components is available from your Chevy dealer.