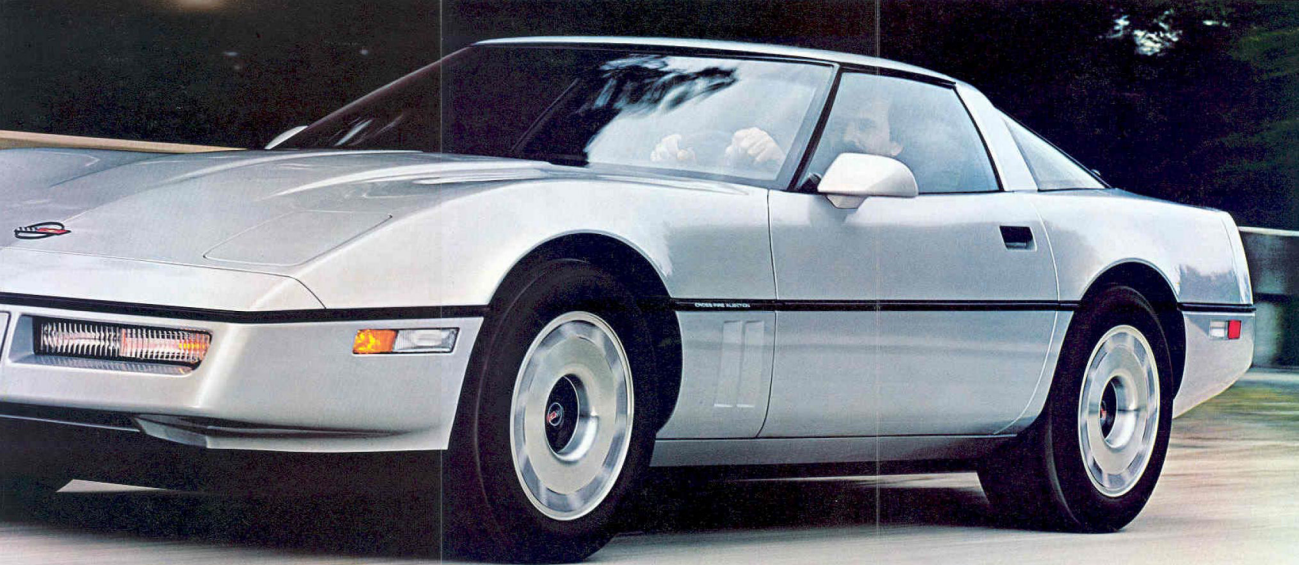




**HOLD ON TIGHT.
YOU'RE ABOUT TO TAKE CHARGE
OF THE NEW CORVETTE.**



Car and Driver calls it "The most advanced production car on the planet."



SOME QUICK FACTS ON THE NEW CORVETTE.

ENGINE

- Cross-Fire Injection V8
- Engine... 5.7 Liter (350 Cu. In.)
- Block... Cast Iron Alloy
- Pistons... Forged Aluminum
- Camshaft... Cast Iron Alloy
- Bore... 4.00"; Stroke... 3.48"
- Horsepower... 205 Net @ 4300 RPM
- Torque... 290 ft.-lb. @ 2800 RPM

TRANSMISSIONS

- 4-speed manual with computer controlled overdrive 2nd, 3rd, and 4th gears (interim availability).

Ratios:

1ST	2.88:1
2ND	1.91:1
3RD	1.33:1
4TH	1.00:1
O.D.	0.67:1

- 4-speed automatic with overdrive and high-stall torque converter.

Ratios:

1ST	3.06:1
2ND	1.63:1
3RD	1.00:1
4TH	0.70:1
• Axle ratio—automatic or manual.	
Standard	3.07:1
Optional	3.31:1

DIMENSIONS AND WEIGHTS

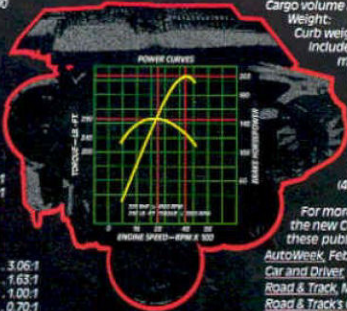
Exterior

Width	
Front tread	59.6"
Rear tread	60.4"
Overall body	71.0"
Length	
Wheelbase	96.2"

Overall body	176.5"
Height:	
Total vehicle	46.7"
Min. ground clearance	5.0"
Interior	
Head room	36.4"
Leg room	42.6"
Shoulder room	54.0"
Hip room	49.3"
Cargo volume index	17.9 cu. ft.

Weight:

Curb weight... 3,192 pounds
Includes standard equipment as designed with oils, lube, coolant, and 20-gallon full fuel capacity.
Distribution:
Front—1,630 lbs. (51%)
Rear—1,562 lbs. (49%)



For more information on the new Corvette, check out these publications:

- AutoWeek*, February 7, 1983
- Car and Driver*, March, 1983
- Road & Track*, March, 1983
- Road & Track's Guide to the All-New Corvette*
- Motor Trend*, March; May, 1983
- Popular Mechanics*, March, 1983

CHEVROLET IS TAKING CHARGE