

AN AMERICAN R=EVOLUTION™



05 monte carlo



REFINED. SOPHISTICATED. AND WELL-MANNERED ...



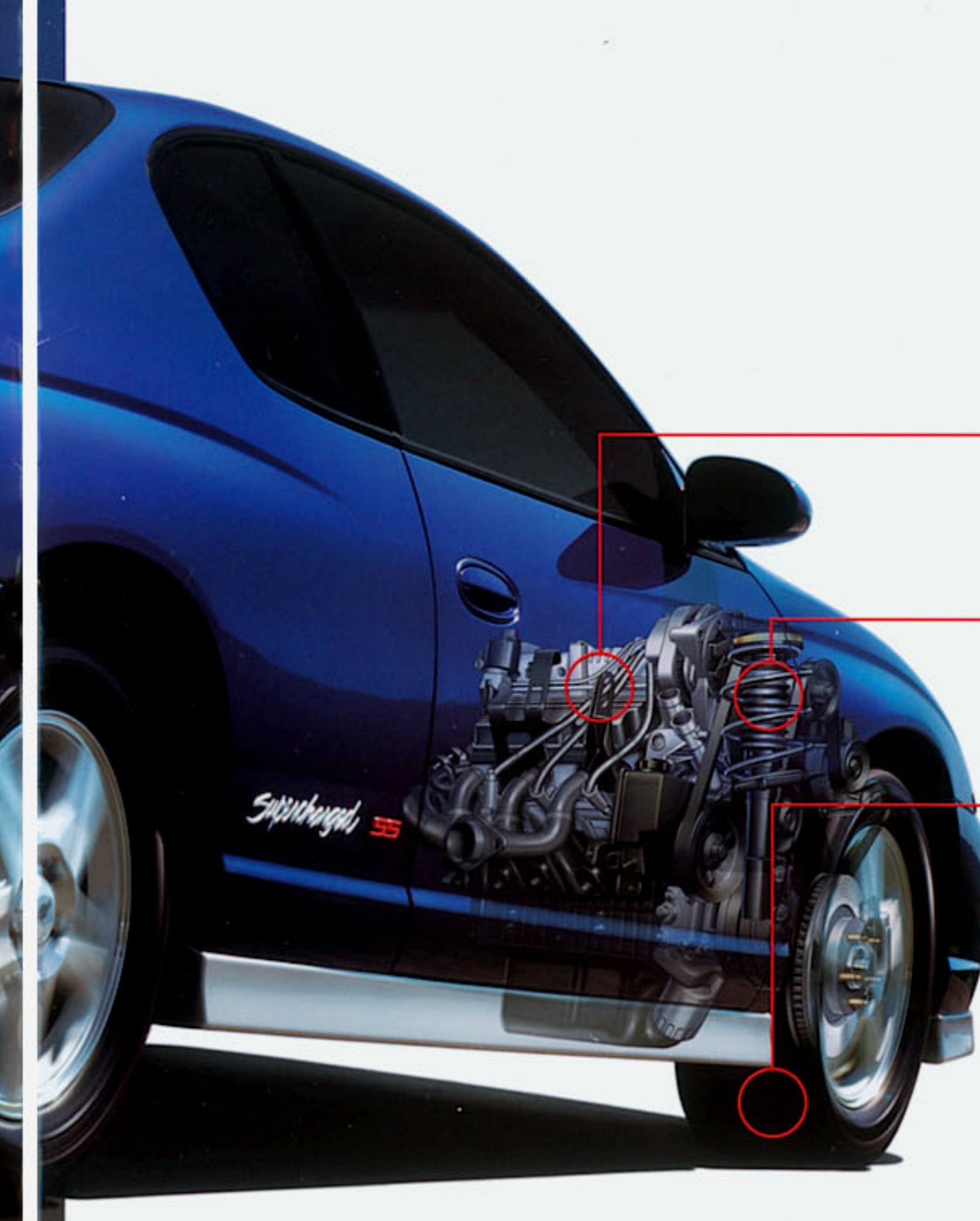
Chevy Monte Carlo is synonymous with the tradition of NASCAR.[®] Fact is, the 2005 model is built with the same winning passion as Monte Carlo race cars — like a body design that incorporates smart airflow management. Monte Carlo also offers powerful V6 engines,

ONE NAMEPLATE HAS WON including a standard 3400 in LS models, which has unsurpassed
MORE NASCAR CUP RACES V6 highway fuel economy in its class,[†] and the acclaimed 3800
THAN ANY OTHER — CHEVY.* in LT models. And of course, a supercharged 3800 in SS models.

*Modern era 1972–present. †Based on 2004 EPA Midsize Cars segment. Monte Carlo LS with the 3400 V6 engine has estimated MPG 32 hwy. Fuel economy estimates based on GM testing. Official EPA estimates not yet available.

REFINED. SOPHISTICATED. AND WELL-MANNERED ...

EXCEPT ON RACE DAY.



SS STYLING

Monte Carlo SS styling includes full-perimeter ground effects, bright stainless-steel dual exhaust tips and a race-inspired rear spoiler.

SS SUPERCHARGED 3800 V6 ENGINE

A supercharged 3800 V6 engine provides 240 hp with a best-in-class* torque rating of 280 lb.-ft. for excellent off-the-line power.

TUNED FOUR-WHEEL INDEPENDENT SUSPENSION

A four-wheel independent performance suspension with large front and rear stabilizer bars is an important SS component.

17-INCH SPEED-RATED TIRES

For impressive grip and handling, the SS model is equipped with 17-inch Goodyear Eagle RS-A, W-speed-rated Performance tires.

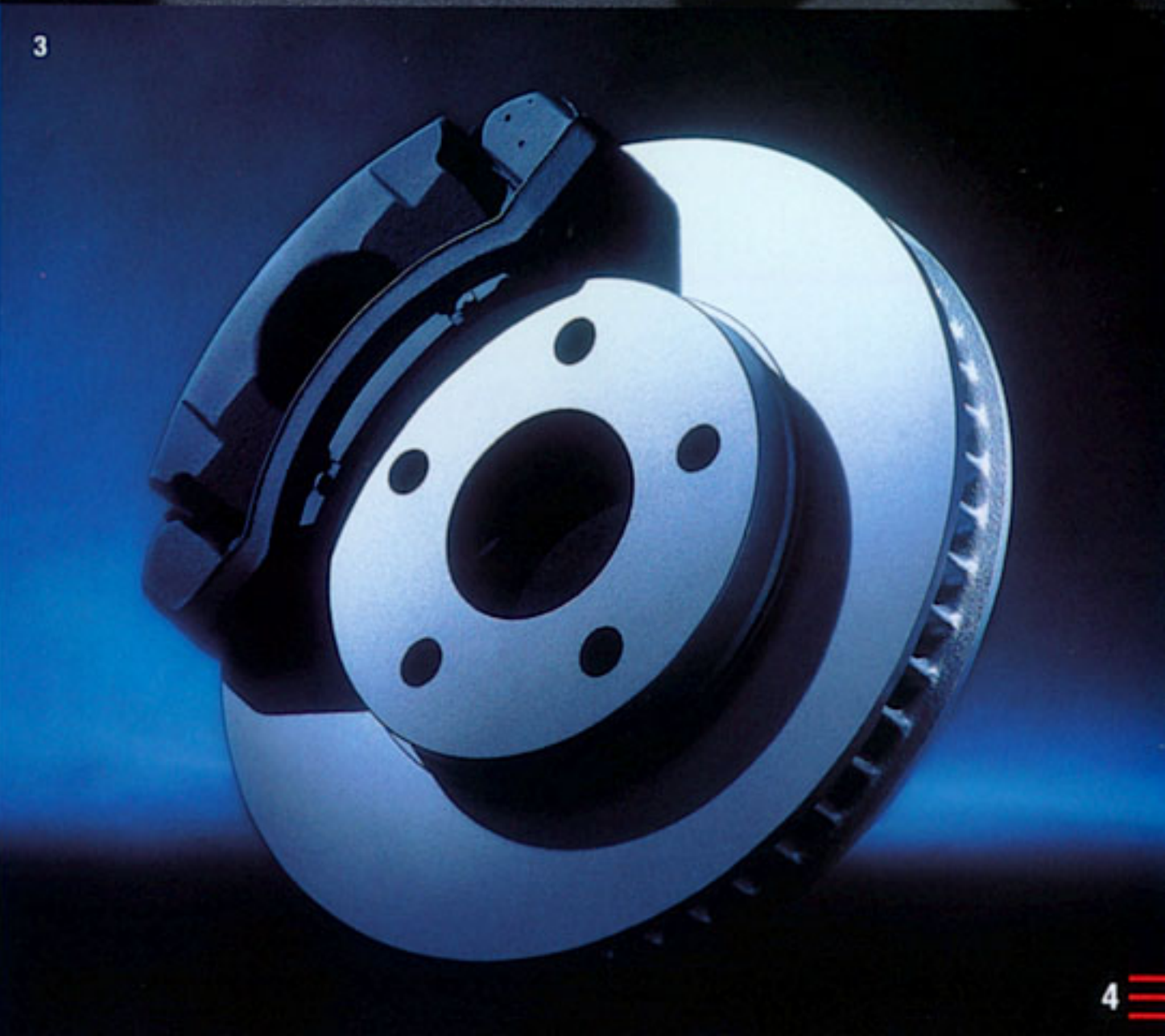
*Unless otherwise noted, all claims in this brochure are based on GM Midsize Coupe segment and 2004 competitive information.



1 - **THE SS BOOST GAUGE** indicates the air pressure level in the intake manifold. The boost pressure increase provided by the supercharger strongly enhances vehicle performance. In fact, the supercharged 3800 V6 delivers 24 percent more torque and 20 percent more horsepower than the naturally aspirated 3800 V6 engine.

2 - **THE SUPERCHARGED 3800 V6 ENGINE** in SS models boasts 240 hp and the most torque in its class.

3 - **FOUR-WHEEL DISC BRAKES WITH ABS** and race-inspired front brake cooling ducts are standard on LT and SS models.





1



2



3

1 – A RACING-INSPIRED GRILLE is just one of several exclusive exterior features on the Tony Stewart Signature Series Monte Carlo.

2 – A GAUGE CLUSTER with orange-outlined white numerals — in the same typeface as exterior graphics and Tony Stewart signature — is exclusive to the Tony Stewart Signature Series and enhances the vehicle's racing-oriented design.

3 – A CUSTOM-DESIGNED DOOR SILL PLATE on each door includes the Tony Stewart signature.

DAYTONA. BRISTOL. YOUR DRIVEWAY.

The new Tony Stewart Signature Series Monte Carlo lets you experience the same exhilarating passion for driving that a NASCAR® Champion experiences. This limited-edition coupe features a supercharged 3800 V6 engine and a Performance suspension. Inside, you'll find front bucket seats with leather seating surfaces and a Tony Stewart instrument panel signature badge. And on the exterior, there are Tony Stewart race car-inspired graphics, a racing-inspired grille and 17-inch black-accented Diamond-Cut wheels.



Tony Stewart Signature Series Limited Edition Monte Carlo Supercharged SS. Limited availability.

IT DOESN'T JUST TAKE CORNERS. IT CARVES THEM OUT.

Whether you're taking on high banks or a winding two-lane road, the new Monte Carlo LT is ready. It comes with a 200-hp 3800 V6 engine, a Sport-Tuned suspension, a rear spoiler and foglamps. And when you want even more aggressive styling in your Monte Carlo, you can opt for the available LT Sport Appearance Package that includes a race-inspired rear spoiler and 16-inch Diamond-Cut cast-aluminum wheels.



FITS LIKE A DRIVING GLOVE.

Everything about the new Monte Carlo LT interior just feels right — from the contoured front bucket seats (with available heated leather seating surfaces) to the leather-wrapped steering wheel with steering wheel-mounted audio and cruise controls. You'll also find a six-gauge instrument cluster and an available Driver Information and Security Group to help you keep informed and safe.



ALL SYSTEMS GO.





Always there. Always ready.

As a standard feature, all Chevy Monte Carlo models are equipped with **ONSTAR*** and a one-year Safe & Sound Plan — providing you with 24-hour access to live English-, Spanish- and French-speaking Advisors who can help in a variety of situations. The Safe & Sound Plan features: • Automatic Notification of Air Bag Deployment • Emergency Services • Stolen-Vehicle Tracking • Remote Door Unlock • Roadside Assistance.

*Call 1-888-4ONSTAR (1-888-466-7827), visit onstar.com and see the inside back flap for system limitations and details.



Hit the road, without hitting any commercials. Available **XM SATELLITE RADIO*** features 68 channels of 100% commercial-free music — and over 120 channels with the best in music, news, sports, talk, comedy and more. XM also features: • Digital-quality sound • Coast-to-coast coverage • Popular names like NASCAR, CNN, ESPN Radio, Radio Disney, VH1 Radio and MTV Radio • Artist and title display • XM Instant Traffic & Weather for select major metropolitan areas.

*XM is available only in the 48 contiguous United States. Service fees extra. Visit www.gm.xmradio.com for more details.



1

1 – A DRIVER INFORMATION AND SECURITY GROUP is available and includes a trip computer (that displays average speed and cruising range), outside temperature display, compass, HomeLink transmitter and theft-deterrent alarm system. Available only in LT and Supercharged SS models.

2 – HEATED, SIX-WAY, POWER FRONT SEATS, included in the available Seating Comfort Package in LT and Supercharged SS models, can help warm up even the coldest mornings.

A CUSTOMIZED PROGRAMMABLE ENVIRONMENT on all models lets you program a number of different convenience and security features using just three buttons on the sound system. Power door locks may be programmed to automatically lock and unlock both doors, driver only, or neither. Or set the timing for the delayed headlamp illumination (off, 30-second or 60-second delay).



2



READY FOR A VICTORY LAP.

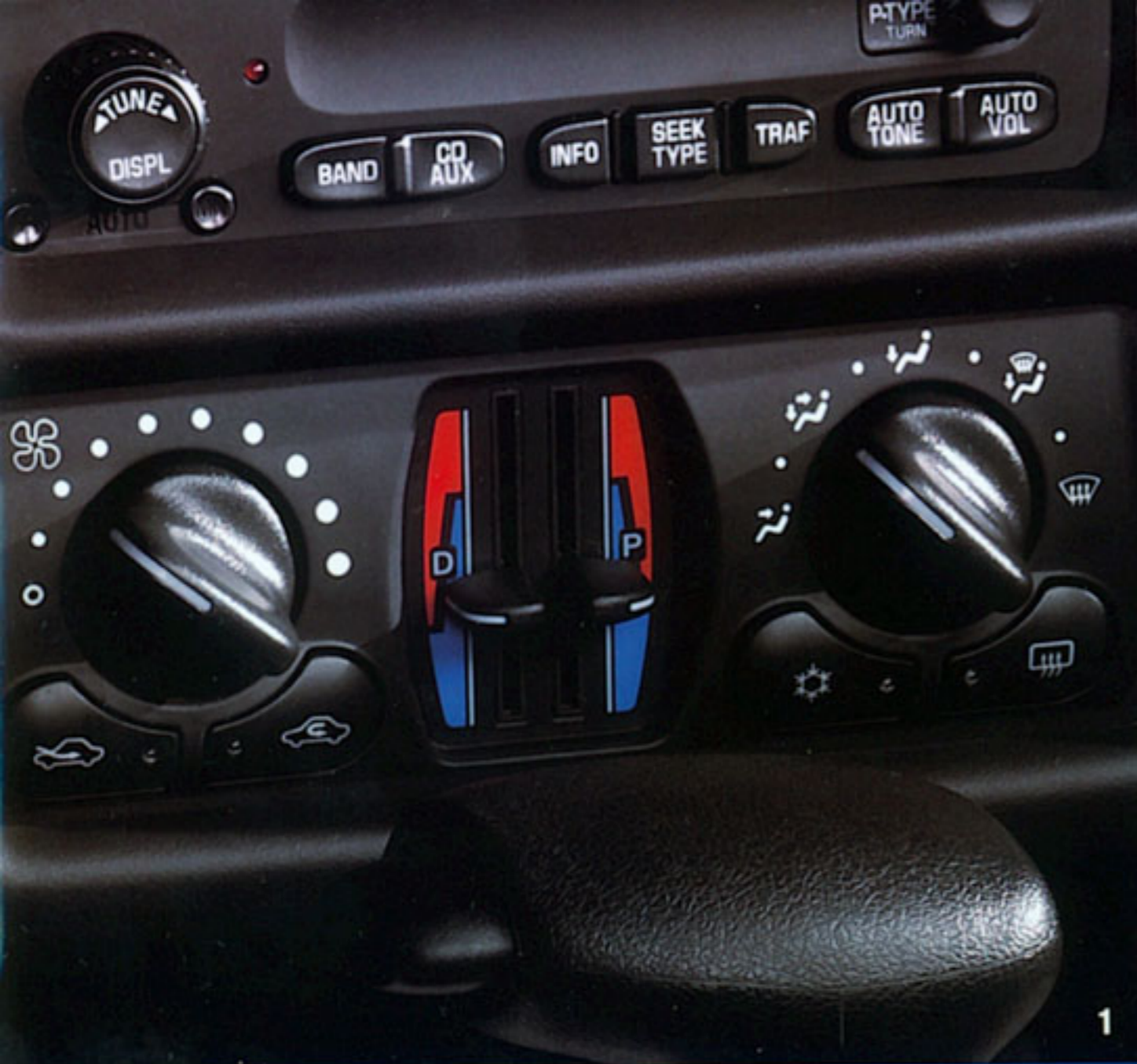
Take the performance-oriented features of Monte Carlo LS, then go further with the available Winner's Circle Package. Features include a race-inspired

STANDARD IN MONTE CARLO LS, THE 3400 V6 HAS UNSURPASSED V6 HIGH-WAY FUEL ECONOMY IN ITS CLASS.* rear spoiler, custom graphics and 16-inch Diamond-Cut wheels. There's also a Ride & Handling suspension, a responsive 3400 V6 engine and four-wheel disc brakes.

COMFORTABLE. EVEN IN THE TURNS.

You'll find lots of comfort inside Monte Carlo LS. In fact, it has one of the largest interiors in its class. Complementing this spaciousness are Custom Cloth front bucket seats and a versatile split-folding rear seat. Dual-zone temperature controls, a programmable Driver Message Center and Remote Keyless Entry are also standard.

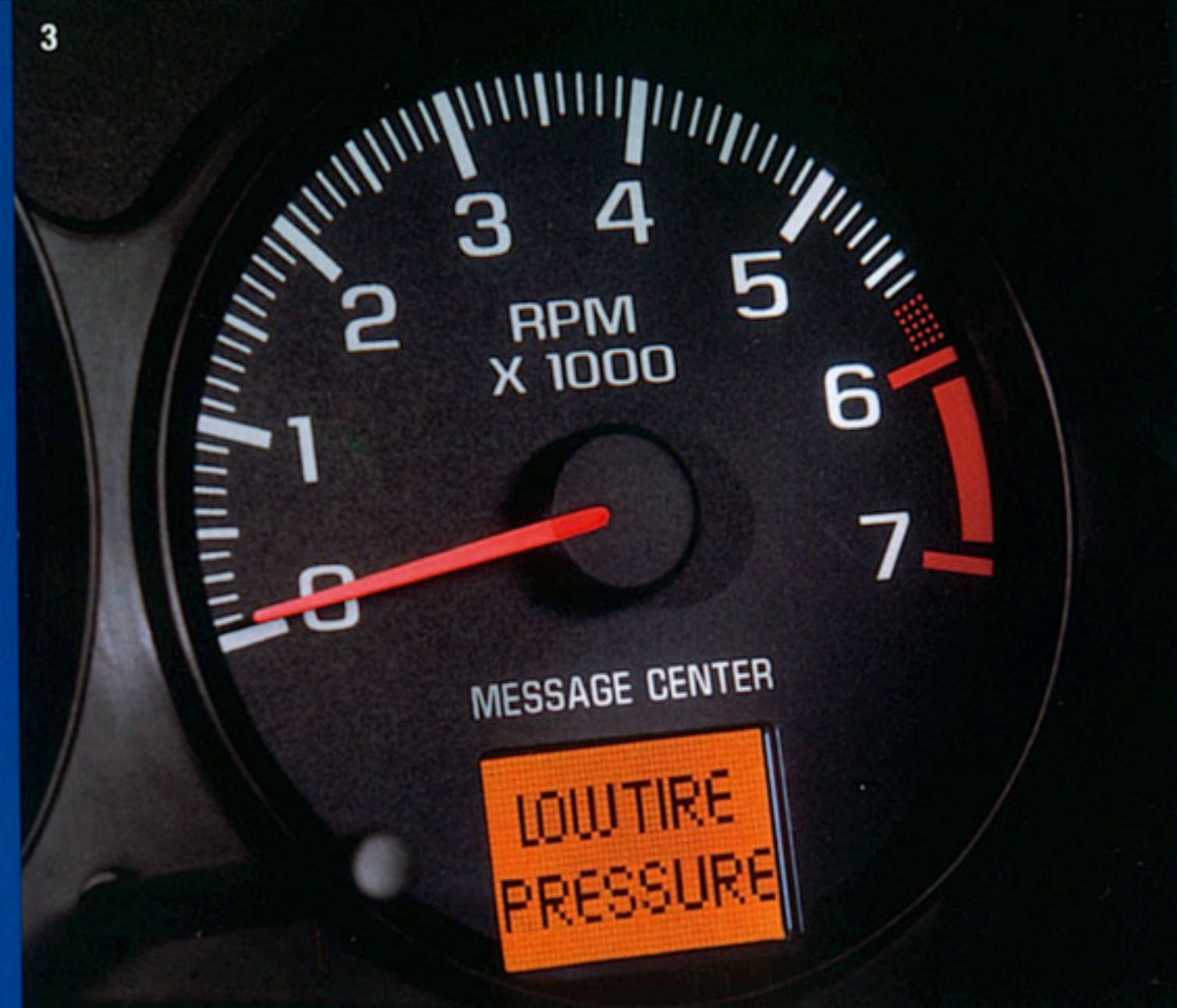




1



2



3

1 - STANDARD SEPARATE DUAL-ZONE TEMPERATURE CONTROLS let the driver and front passenger adjust the temperature to their individual preferences.

2 - ELECTRONIC TRACTION CONTROL is standard on Supercharged SS and LT models and available on LS. This system functions at any speed to help reduce wheel spin on most slippery surfaces.

3 - A TIRE INFLATION MONITOR is standard on Supercharged SS and LT models and available on LS, and warns the driver via a display in the instrument panel if there is a significant air pressure difference in one of the tires.

WHAT MAKES A CHAMPION.

STANDARD ONSTAR*

The newest generation of OnStar is standard and features dual-mode digital/analog capabilities, and an enhanced voice recognition system that provides the convenience of continuous-digit dialing for Personal Calling. A one-year Safe & Sound Plan is included.

ONE-PIECE SIDE RING STRUCTURE

A one-piece "door ring and quarter panel" provides additional rigidity and precise build quality — a key reason why Monte Carlo has such a quiet ride and solid feel on the road.

RIGID FLOOR PAN STRUCTURE

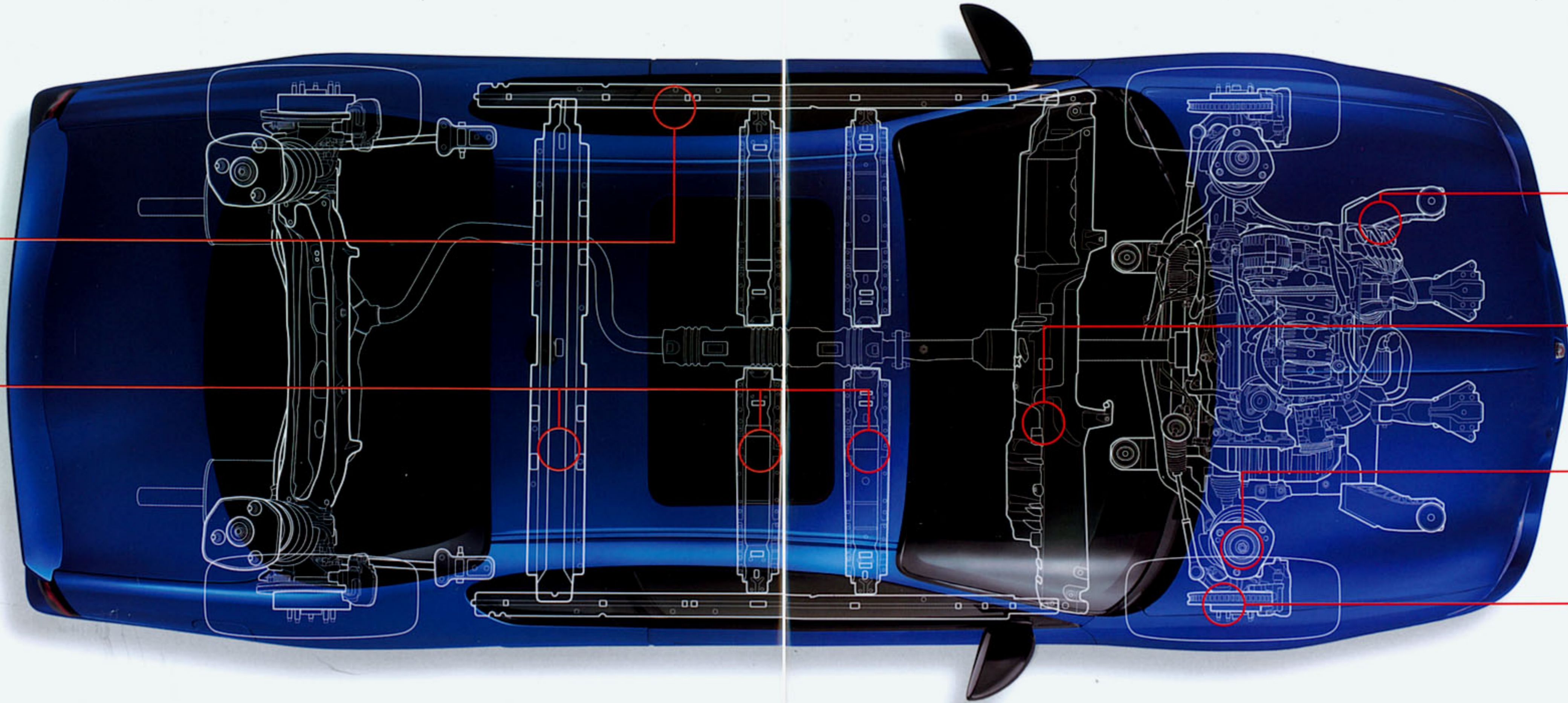
Three cross members tie into the rocker panels to provide excellent support and structural rigidity. This engineering method contributes to exceptional ride quality.

★★★★★ FRONTAL CRASH SAFETY

In U.S. government tests,† the 2004 Monte Carlo earned the highest frontal crash safety rating for both the driver and right-front passenger — five stars.

UNSURPASSED V6 FUEL ECONOMY**

Monte Carlo LS models with the standard 3400 V6 engine achieve an estimated 32 MPG hwy. — unsurpassed in its class.



DRIVER SIDE-IMPACT AIR BAG††

The available driver side-impact air bag helps reduce the risk of injuries to the driver in certain side impacts. Not available on LS models.

ALUMINUM ENGINE CRADLE

Made of lightweight but stiff extruded aluminum, the engine cradle isolates road noise and powertrain vibration from the passenger compartment.

MAGBEAM CONSTRUCTION

A lightweight magnesium instrument panel beam spans the width of Monte Carlo. The lightweight beam significantly reduces squeaks and rattles, especially in the heating, air conditioning and audio systems.

INDEPENDENT SUSPENSION

A precisely tuned four-wheel independent suspension with coil springs and stabilizer bars provides a superb blend of confident control and smooth driving comfort.

ELECTRONIC TRACTION CONTROL

All-speed Electronic Traction Control helps maintain traction by reducing wheel spin on slippery surfaces. The system reduces engine power and automatically modulates the brakes. Standard on SS and LT; available on LS.

*OnStar requires vehicle electrical systems and analog wireless service to be available and operating. OnStar Personal Calling-enabled vehicle, existing OnStar service contract and prepaid calling minutes required. Available in most markets. Voice recognition system may not recognize some voices. Call 1-888-4ONSTAR (1-888-466-7827), visit onstar.com and see the inside back flap for system limitations and details. †Government star ratings are part of the National Highway Traffic Safety Administration's (NHTSA) New Car Assessment Program (NCAP). **Based on 2004 EPA Midsize Cars segment. Fuel economy estimates based on GM testing. Official EPA estimates not yet available. ††A NOTE ON CHILD SAFETY: Always use safety belts and proper child restraints, even in vehicles equipped with air bags. Children are safer when properly secured in a rear seat. Never place a rear-facing infant restraint in the front seat of any vehicle equipped with an active frontal air bag. See the vehicle's Owner's Manual and child safety seat instructions for more safety information.

24100195 9344730

SANDSTONE METALLIC



SPORT RED METALLIC



WHITE



MEDIUM GRAY METALLIC



SUPERIOR BLUE METALLIC



SILVERSTONE METALLIC



BLACK



05526

EXTERIOR COLORS

INTERIOR COLORS

	NEUTRAL	MEDIUM GRAY	EBONY
LS AND LT			
Sandstone Metallic (LS only)	■		■
White	■	■	■
Black	■	■	■
Sport Red Metallic	■	■	■
Superior Blue Metallic		■	■
Victory Red	■	■	■
Laser Blue Metallic	■	■	■
Medium Gray Metallic		■	■
Silverstone Metallic		■	■
LS/LT SPORT APPEARANCE			
White	■	■	■
Black ¹	■	■	■
Victory Red ¹	■	■	■
Silverstone Metallic		■	■
Superior Blue Metallic ¹		■	■
Sport Red Metallic ¹	■	■	■
Laser Blue Metallic ¹	■	■	■
Medium Gray Metallic ¹		■	■
SUPERCHARGED SS			
White ²	■	■	■
Black ²	■	■	■
Laser Blue Metallic ²	■	■	■
Victory Red ²	■	■	■
Silverstone Metallic ³		■	■
Superior Blue Metallic ³		■	■
Sport Red Metallic ³	■	■	■
Medium Gray Metallic ²		■	■



LASER BLUE METALLIC



VICTORY RED

SPEED COMES IN MANY COLORS.

¹ Available with Winner's Circle Appearance Package. ² May be ordered as a solid color or with Silverstone Metallic ground effects on Supercharged SS only. ³ Available only with Silverstone Metallic ground effects on Supercharged SS.

**16-INCH FIVE-SPOKE STYLED
CAST-ALUMINUM WHEELS**

Available on Monte Carlo LS.

**16-INCH DIAMOND-CUT
CAST-ALUMINUM WHEELS**

Standard on LS and LT Sport
Appearance Packages and Winner's
Circle Appearance Package.

**16-INCH DELUXE
BOLT-ON
WHEEL COVERS**

Standard on
Monte Carlo LS.

**17-INCH DIAMOND-CUT
CAST-ALUMINUM WHEELS**

Standard on Supercharged SS.
Chrome-finish version also
available (shown).

**16-INCH SPORT CAST-
ALUMINUM WHEELS**

Standard on Monte Carlo LT.





NEUTRAL LS CUSTOM CLOTH



NEUTRAL LT AND SS SPORT CLOTH



NEUTRAL LEATHER SEATING SURFACES
(NOT AVAILABLE ON LS)

EBONY CUSTOM CLOTH

EBONY SPORT CLOTH

EBONY LEATHER (NOT AVAILABLE ON LS)

MEDIUM GRAY CUSTOM CLOTH

MEDIUM GRAY SPORT CLOTH

monte carlo BUYER'S GUIDE

S = Standard O = Optional - = Not Available ■ = Included in Preferred Equipment Group

PREFERRED EQUIPMENT GROUPS

	LS 1SB	LT 1SB	SS 1SB
NOTE: These optional Preferred Equipment Groups (PEGs) are designed to help simplify the buying process. You may also add selected individual options (see Standards & Options chart for availability). Some restrictions apply. Please see your salesperson for details.			
Cargo net (luggage-area)	■	■	■
Carpeted floor mats	■	■	S
Cruise control	■	S	S
AM/FM/CD with RDS, ¹ premium sound system with 200-watt auxiliary amplifier	■	■	S
16-inch five-spoke styled-aluminum wheels	■		
Auto-dimming inside rearview mirror with dual reading lamps		■	■
Dual, power remote, heated exterior rearview mirrors		■	■
Six-way power driver seat (includes manual lumbar adjuster)	■	■	■
Illuminated visor vanity mirrors, driver and front passenger, with extendable sunshades	■	S	S
Driver Information and Security Group (includes trip computer, outside temperature display, compass, HomeLink transmitter and theft-deterrent alarm system)		■	■
Seating Comfort Package ² (includes six-way power passenger seat and driver and front passenger heated seats)			■

APPEARANCE PACKAGES

	LS	LT	SS
NOTE: Some individually available options listed below are included in Preferred Equipment Groups. Some restrictions may apply. Please see your salesperson for details.			
LS Sport Appearance Package Includes race-inspired rear spoiler and 16-inch Diamond-Cut cast-aluminum wheels	O ³	-	-
LT Sport Appearance Package Includes race-inspired rear spoiler and 16-inch Diamond-Cut cast-aluminum wheels	-	O	-
Winner's Circle Appearance Package Includes 16-inch Diamond-Cut cast-aluminum wheels, race-inspired rear spoiler and side graphics applique	O ³	O	-

EXTERIOR

Foglamps	-	S	S
License plate depression cover (front)	S	S	S
Mirrors:			
— Dual power remote	S	S	S
— Dual, power, heated	-	O ³	O ³
Power sunroof (requires illuminated visor vanity mirrors on LS)	O	O	O
Daytime Running Lamps with Automatic Exterior Lamp Control	S	S	S
Spoiler, rear decklid	O ⁴	S	S
Trunk opener, power remote	S	S	S
Two-sided galvanized-steel body panels (except the roof)	S	S	S

INTERIOR

	LS	LT	SS
Air bags, ⁵ driver and right-front passenger	S	S	S
Air bag, ⁵ side-impact driver-side	-	O	O
Air conditioning, dual-zone, driver and front passenger temperature controls	S	S	S
Air filtration system	S	S	S
Auto-dimming inside rearview mirror with dual reading lamps	-	O ³	O ³
Cargo net, luggage-area	O	O	O
Child safety seat LATCH system	S	S	S
Cruise control	O	S	S
Cup holders, two in front console and two in rear armrest	S	S	S
Defogger, electric rear-window	S	S	S
Delayed entry/exit lighting with theatre dimming	S	S	S
Driver Information and Security Group: trip computer, outside temperature display, compass, HomeLink transmitter and content theft alarm	-	O ³	O ³
Floor mats, carpeted, front and rear	O	O	S
Gauges:			
— Include speedometer, tachometer, fuel and engine temperature	S	-	-
— Include speedometer, tachometer, fuel, engine temperature, oil pressure and voltmeter	-	S	-
— Include speedometer, tachometer, fuel, engine temperature, oil pressure and boost gauge	-	-	S
Intermittent wiper system, variable	S	S	S
Lighting, delayed entry with theatre dimming	S	S	S
Message Center, instrument panel, includes up to 15 messages (14 on LS)	S	S	S
OnStar ⁶	S	S	S
PASSlock theft-deterrent system	S	S	S
Programmable automatic door locks for enhanced security with lockout protection	S	S	S
Remote Keyless Entry	S	S	S
Seating: Custom Cloth reclining front buckets/console/front passenger seatback storage and 60/40 split-folding rear seat	S	-	-
Seating: Sport Cloth reclining front buckets/console/front passenger seatback storage and 60/40 split-folding rear seat	-	S	S
Seating surfaces, leather, with front buckets, console, front passenger seatback storage and 60/40 split-folding rear seat	-	O	O ⁷
Seating: power driver, six-way (includes manual lumbar adjuster)	O	O	O
Seating Comfort Package (includes six-way power passenger seat and driver and front passenger heated seats)	-	O ^{2,3}	O ^{2,3}
Steering wheel: leather-wrapped with redundant audio and cruise controls	O ³	S	S
Tilt-Wheel steering column	S	S	S
Tinted glass with Solar-Ray	S	S	S
Windows: power with driver's Express-Down feature	S	S	S

SOUND SYSTEMS

	LS	LT	SS
NOTE: Sound systems include an Electronically Tuned Receiver (ETR) with AM/FM stereo, TheftLock, auto tone control, automatic volume, seek-scan, Radio Data System (RDS), ¹ 12 FM and 6 AM station presets and a digital clock.			
Cassette player, RDS, ¹ and 6 speakers	S	S	-
CD player, RDS, ¹ 6-speaker premium sound system with 200-watt auxiliary amplifier	0	0	S
CD and cassette players, RDS, ¹ 6-speaker premium sound system with 200-watt auxiliary amplifier	0	0	0
XM Satellite Radio: ⁸ over 120 channels of digital-quality sound	0	0	0
POWER TEAMS/CHASSIS			
Axle ratios:			
— 2.86:1	S	-	-
— 3.29:1	-	S	-
— 2.93:1	-	-	S
V6 engine: 3400 V6 engine with SFI	S	-	-
V6 engine: 3800 with SFI	-	S	-
V6 engine: supercharged 3800 with SFI	-	-	S
Brakes: power 4-wheel disc	S	S	S
Brakes: power 4-wheel disc with ABS (includes Electronic Traction Control and Tire Inflation Monitor)	0	S	S
Exhaust, dual outlet (with bright stainless-steel tips on SS)	-	S	S
Hydra-Matic 4-speed electronically controlled automatic transmission	S	S	-
Heavy-duty Hydra-Matic 4-speed electronically controlled automatic transmission	-	-	S
Stainless-steel system exhaust system with aluminized muffler and tailpipe	S	S	S
Suspensions:			
— Ride and Handling	S	-	-
— Sport	-	S	-
— Performance	-	-	S
Goodyear Eagle tires:			
— P225/60R-16 Touring	S	-	-
— P225/60R-16 Performance	-	S	-
— P235/55R-17 W-speed-rated Performance	-	-	S
Wheels:			
— 16-inch Deluxe bolt-on wheel covers	S	-	-
— 16-inch Sport cast-aluminum	-	S	-
— 16-inch five-spoke Styled cast-aluminum	0	-	-
— 16-inch Diamond-Cut cast-aluminum	0 ⁴	0 ⁴	-
— 17-inch Diamond-Cut cast-aluminum	-	-	S
— 17-inch chrome-finish Diamond-Cut cast-aluminum	-	-	0

¹ RDS functions only where stations broadcast RDS information. ² Requires leather seating surfaces. ³ Requires Preferred Equipment Group (PEG) 1SB. ⁴ Requires optional LS Sport Appearance Package or Winner's Circle Appearance Package. ⁵ Always use safety belts and proper child restraints, even with air bags. Children are safer when properly secured in a rear seat. Never place a rear-facing infant restraint in the front seat of any vehicle equipped with an active frontal air bag. See the Owner's Manual and child safety seat instructions for more safety information. ⁶ Visit onstar.com and see inside back flap for system limitations and details. ⁷ Includes leather seating surfaces in PEG 1SB for Supercharged SS only. ⁸ XM is available only in the 48 contiguous United States. Service fees extra. Visit www.gm.xmradio.com for more details. ⁹ Requires available LT Sport Appearance Package or Winner's Circle Appearance Package.

EXTERIOR DIMENSIONS (IN.)

Wheelbase	110.5
Width (overall)	72.3
Length (overall)	197.9
Height (overall)	55.2

INTERIOR DIMENSIONS (IN.)

Headroom — front	38.1
Headroom — rear	36.5
Legroom — front	42.4
Legroom — rear	35.8
Hip room — front	55.2
Hip room — rear	55.5
Shoulder room — front	58.3
Shoulder room — rear	57.8

CAPACITIES

Passenger capacity	5
Cargo capacity ¹ (cu. ft.)	15.8
Fuel tank capacity (gal., approx.)	17

TRAILERING²

Gross trailer weight (lbs., up to)	1000
Maximum tongue weight (lbs.)	100

¹ Cargo and load capacity limited by weight and distribution. ² Additional equipment required. Maximum trailer weight ratings are calculated assuming a base vehicle, except for any option(s) necessary to achieve the rating, plus driver. The weight of other optional equipment, passengers and cargo will reduce the maximum trailer weight your vehicle can tow. See your Chevy dealer for additional details.

IMPORTANT INFORMATION

NEW VEHICLE LIMITED WARRANTY

GM vehicles registered in the USA are covered for 3 years/36,000 miles (whichever comes first). The complete vehicle is covered including tires, towing to your nearest Chevrolet dealership, and cosmetic corrosion resulting from defects. Repairs will be made to correct any vehicle defect and most warranty repairs will be made at no charge. In addition, rust-through corrosion will be covered for 6 years/100,000 miles (whichever comes first). See dealer for details.

CORROSION PROTECTION

Chevrolet vehicles are designed and built to resist corrosion. All body and sheet metal components are warranted against rust-through corrosion for six years or 100,000 miles, whichever comes first. Application of additional rust-inhibiting materials is not required under the corrosion coverage and none is recommended. See your Chevrolet dealer for terms of this limited warranty.

ASSEMBLY

Chevrolet vehicles and their components are assembled or produced by different operating units of General Motors, its subsidiaries or suppliers to GM worldwide. We sometimes find it necessary to produce Chevrolet vehicles with different or differently sourced components than originally scheduled. Since some options may be unavailable when your vehicle is assembled, we suggest that you verify that your vehicle includes the equipment you ordered or, if there are changes, that they are acceptable to you.

ENGINES

Chevrolet products are equipped with engines produced by GM Powertrain or other suppliers to GM worldwide. The engines in Chevrolet products may also be used in other GM makes and models.

AN IMPORTANT NOTE ABOUT ALTERATIONS AND WARRANTIES

Installations or alterations to the original equipment vehicle (or chassis) as distributed by General Motors are not covered by the General Motors New Vehicle Limited Warranty. The special body company, assembler, equipment installer or upfitter is solely responsible for warranties on the body or equipment and any alterations (or any effect of the alterations) to any of the parts, components, systems or assemblies installed by GM. General Motors is not responsible for the safety or quality of design features, materials or workmanship of any alterations by such suppliers.

GM PROTECTION PLAN

The GM Protection Plan is the only vehicle service and maintenance contract endorsed by General Motors. The GM Protection Plan offers Mechanical coverage for the parts and labor costs of repairing covered vehicle components against failure — even if it results from wear and tear. Depending on the level of coverage, additional benefits may include Roadside Assistance, Alternate Transportation or Towing. The GM Protection Plan also offers basic Maintenance coverage for specific maintenance needs. Ask your dealer about the GM Protection Plan or visit www.gmprotectionplan.com for coverage information and details.

ONSTAR

OnStar services require vehicle electrical system and analog wireless service to be available and operating for features to function properly. OnStar relies on existing emergency service providers as well as analog wireless and satellite technologies and is subject to their limitations. The U.S. Federal Communications Commission (FCC) ruled that wireless carriers will no longer be required to support the analog wireless network after February 16, 2008. As of January 1, 2008, OnStar plans to offer service only through equipment that operates on the digital network, which may require the purchase of a system upgrade. Call 1-888-4ONSTAR (1-888-466-7827), see your OnStar Owner's Guide or visit www.onstar.com for system information and details.

IMPORTANT WORDS ABOUT THIS CATALOG

We have tried to make this catalog comprehensive and factual. We reserve the right, however, to make changes at any time, without notice, in prices, colors, materials, equipment, specifications, models and availability. Specifications, dimensions, measurements, ratings and other numbers in this catalog and other printed materials provided at the dealership or affixed to vehicles are approximates based upon design and engineering drawings and prototypes and laboratory tests. Your vehicle may differ due to variations in manufacture and equipment. Since some information may have been updated since the time of printing, please check with your Chevrolet dealer for complete details. Chevrolet reserves the right to lengthen or shorten the model year for any product for any reason, or to start and end model years at different times.

A NOTE ABOUT CHILD SAFETY

Always use safety belts and proper child restraints, even in vehicles equipped with air bags. Children are safer when properly secured in a rear seat. Never place a rear-facing infant restraint in the front seat of any vehicle equipped with an active frontal air bag. See your vehicle Owner's Manual and child safety seat instructions for more information.

GM, the GM Logo, Chevrolet, the Chevrolet Logo, OnStar, the OnStar Emblem and the slogans, emblems, vehicle model names, vehicle body designs and other marks appearing in this catalog are the trademarks and/or service marks of General Motors Corporation, its subsidiaries, affiliates or licensors. The General Motors Protection Plan is a registered trademark of General Motors Corporation. GMAC is a registered service mark of the General Motors Acceptance Corporation. HomeLink is a registered trademark of Johnson Controls, Inc. ETR and TheftLock are registered trademarks of Delphi Technologies, Inc. NASCAR® is a registered trademark of the National Association for Stock Car Auto Racing, Inc. Tony Stewart,® #20® and The Home Depot® licensed under authority of Joe Gibbs Racing, Huntersville, NC. The XM name and related logos are registered trademarks of XM Satellite Radio Inc. ©2004 General Motors Corporation. All rights reserved.

WE'VE GOT YOUR BACK.

At Chevrolet, giving you a completely satisfying ownership experience is our top priority. That's why if you ever need assistance, feel free to contact us at these web sites or phone numbers.

chevy.com

chevy.com offers shopping tools such as Build Your Own, Locate a Vehicle, Request a Quote, and GMAC Financing Options, as well as email Updates, Competitive Comparisons, Pricing, Special Offers ... and more.

24-Hour Roadside Assistance 1-800-CHEV-USA

Chevrolet Roadside Assistance provides you with the following services during the New Vehicle Limited Warranty: Emergency Towing (to closest Chevrolet dealer from a legal roadway), Locksmith/Key Services (keys lost or locked inside vehicle), Flat Tire Changes (spare installed), Fuel Delivery (\$5 of fuel delivered on the road), and Jump Starts (at home or on the road). For specific terms and conditions, please contact your Chevrolet Roadside Assistance advisor at 1-800-243-8872.

Courtesy Transportation

Ask your Chevrolet dealer for Courtesy Transportation if you leave your vehicle for repairs under the New Vehicle Limited Warranty. Ask if you qualify for expense reimbursement and/or vehicle rental. Services vary by dealer.

Chevrolet Customer Assistance Center 1-800-222-1020

Talk directly to customer relationship managers who can handle any inquiries related to product information, warranty coverages, or product or service concerns you may have. Please refer to your Owner's Manual for Customer Assistance information.

gmmobility.com 1-800-323-9935

GM Mobility assists persons with unique automotive transportation needs, offering helpful resources to shop for adaptive equipment, information about GM dealer-installed mobility accessories, and financial reimbursement for eligible aftermarket equipment.

Chevrolet Owner Center chevy.com/mygmlink

Register your vehicle with the Chevrolet Owner Center and receive benefits such as: Online Access to your Vehicle Owner's Manual, Maintenance Schedule Reminders, Service History Tracking, PDA Applications, Warranty and Service Information, Safety Information, Special Offers and Privileges, and News and Events.

Current Offers

Call 1-800-950-CHEV (1-800-950-2438) or visit chevy.com for new product and current incentive information.

The GM Card 1-800-8GM-CARD

The GM Card rewards you up to 5% on every credit card purchase, making it the fastest way to save toward the GM car or truck of your dreams. See the GM Card program details and credit card offerings at www.gmcard.com or call 1-800-8GM-CARD (1-800-846-2273).



chevy.com

05CHEMONCAT01