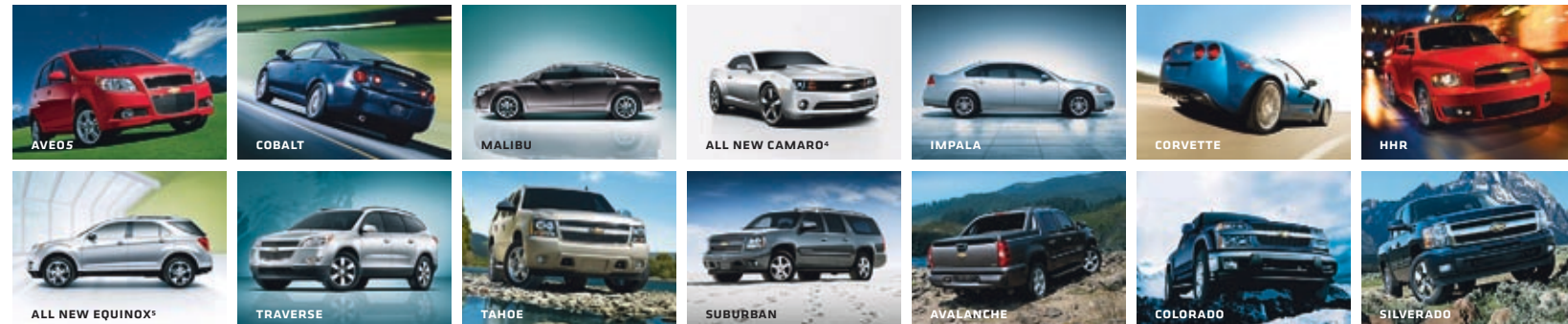


**CHEVY**

To us, it's pretty simple: Build vehicles that anyone would be proud to own, and put them within reach. We've made sure that no one offers more models with **30 MPG HIGHWAY OR BETTER<sup>1</sup>**. We're backing our quality with the **BEST COVERAGE IN AMERICA**, which includes the 100,000 mile/5-year<sup>2</sup> transferable Powertrain Limited Warranty plus Roadside Assistance and Courtesy

Transportation Programs. We're filling our cars and trucks with the kind of thinking, features and craftsmanship you'd expect to pay a lot more for. This philosophy has earned us more **CONSUMERS DIGEST "BEST BUY"** awards for 2009 models<sup>3</sup> than any other brand. So owning a Chevy isn't just a source of transportation. It's a source of pride. **CHEVY.COM**



<sup>1</sup> EPA estimated. Models include Aveo, Aveo5, Cobalt, Cobalt XFE, HHR, HHR Panel, select Malibu models and 2010 Equinox. <sup>2</sup> Whichever comes first. See dealer for details. <sup>3</sup> Models include Malibu, Traverse, Silverado 1500 and others. Visit [www.consumersdigest.com/award\\_page](http://www.consumersdigest.com/award_page) to see the full list of award-winning Chevy vehicles. <sup>4</sup> Available to order. <sup>5</sup> Available July 2009.



Mixed Sources  
Product group from well-managed  
forests and other controlled sources  
www.fsc.org Cert no. SWE-COC-09949  
© 1996 Forest Stewardship Council

ALL NEW **CHEVY EQUINOX** 



## THE BEST COVERAGE IN AMERICA

The all new 2010 Equinox is backed by the 100,000 mile/5-year<sup>1</sup> transferable Powertrain Limited Warranty. That's 40,000 more miles than Toyota or Honda offers. Add in our Roadside Assistance and Courtesy Transportation Programs, and you have the best coverage in America.

## THE BIG IDEAS

Best Coverage in America ...	2
360° of Safety .....	5
Surprising MPG.....	6
Finely Crafted Interior.....	9
Precision Engineering .....	10
High-Tech Extras .....	13

## THE MORE YOU STUDY IT, THE SMARTER IT IS.

When we set out to design a new five-passenger crossover, we put our best thinking into its fuel efficiency, safety and value. The result is the smart new 2010 Chevy Equinox. It's fuel-conscious, with front-wheel-drive models offering a standard **32 MPG** highway.<sup>2</sup> That's better than Toyota RAV4 and Honda CR-V.<sup>3</sup> Equinox **SURROUNDS YOU IN SAFETY** with technology that helps protect you before, during and, thanks to OnStar<sup>4</sup> with the Safe & Sound Plan – standard for the first year – after a collision. Best yet, Equinox combines fuel efficiency, safety and outstanding coverage with the practical features you need and the premium features you've always wanted – all for much less than you'd expect. Get behind the wheel today and see for yourself.



**Equinox LTZ in Summit White.** <sup>1</sup> Whichever comes first. See dealer for details. <sup>2</sup> EPA estimate. <sup>3</sup> EPA estimated MPG highway (2WD): Toyota RAV4 28, Honda CR-V 27. <sup>4</sup> Call 1-888-4ONSTAR (1-888-466-7827), visit onstar.com and see page 18 for details and system limitations.





## THIS IS HOW A FORWARD-THINKING COMPANY DOES REVERSE.

We considered your safety from every angle. In fact, we've provided you with an available **REARVIEW CAMERA SYSTEM** on select models that's designed to help keep certain stationary objects like bikes in view when backing up. Next, we surround you with **SIX AIR BAGS!** We've also included the **STABILITRAK** Electronic Stability Control System with rollover mitigation to help your vehicle respond to your steering commands and **TRACTION CONTROL** to help




Select models feature a rearview camera system, designed to help you see more of what's behind you. It is conveniently located in the rearview mirror,<sup>3</sup> so using it feels natural right from the start.

reduce wheel spin on gravel or slippery surfaces. The antilock brake system and **AVAILABLE ALL-WHEEL DRIVE** provide additional control so you can better handle the unexpected. And OnStar<sup>2</sup> with the Safe & Sound Plan – standard for the first year – includes **AUTOMATIC CRASH RESPONSE** with built-in vehicle sensors that can send an alert to OnStar. Even if you don't respond, an OnStar Advisor can request that emergency help be sent right away.

### EQUINOX

For a 360-degree view, visit [chevy.com/allnewequinox](https://chevy.com/allnewequinox)

 Every Equinox provides peace of mind with the OnStar<sup>2</sup> Safe & Sound Plan (standard for the first year) that helps protect you and your family.

## EQUINOX

For more detailed warranty info, visit [chevy.com/allnewequinox](http://chevy.com/allnewequinox)



The ECO button with the 2.4L engine allows you to switch to a fuel-saving mode, which can increase your vehicle's fuel economy when compared to normal operation.

## INTELLIGENT CONSUMPTION.



Equinox has a world of efficient technology you may never see but you'll always appreciate. Our **FUEL EFFICIENCY** commitment to use only the most advanced engineering is what enables Equinox to offer **32 MPG** highway<sup>1</sup> with the standard 2.4L ECOTEC four-cylinder engine. We offer a **DIRECT INJECTION ENGINE** and a six-speed automatic transmission with overdrive that provide impressive power and fuel efficiency. The **RACK-MOUNTED ELECTRIC POWER STEERING** enhances handling and contributes to not only the overall performance of the vehicle but also its exceptional fuel efficiency. Even the aerodynamically designed roof and custom-designed **LOW-ROLLING RESISTANCE TIRES** combine to create less friction for the vehicle and contribute to the excellent gas mileage. We've also given you the option of an available 3.0L six-cylinder engine<sup>2</sup> for improved performance and increased power. The choice is up to you.

FUEL COMPARISONS (STANDARD MODELS)	EPA. EST MPG HWY. <sup>3</sup>	MAXIMUM HWY. DRIVING RANGE (MILES)
2010 CHEVY EQUINOX	32	601
2009 HONDA CR-V	27	413
2009 TOYOTA RAV4	28	445
2009 FORD ESCAPE	28	462

The 2.4L four-cylinder engine produces 182 horsepower at 6700 rpm and 174 lb.-ft. of torque at 4800 rpm.



Equinox 2LT in Silver Ice Metallic shown with available features. <sup>1</sup> EPA estimate for FWD model. <sup>2</sup> Estimated 25 MPG highway. Based on GM testing. Official EPA estimate not yet available. <sup>3</sup> FWD model with four-cylinder engine.





Equinox LTZ interior in Brownstone shown with available features. <sup>1</sup> Based on GM Compact Crossover segment. Excludes other GM vehicles. <sup>2</sup> With rear seats folded. Cargo and load capacity limited by weight and distribution.

## OBSESSIVE, IN THE VERY BEST WAY.

We considered every aspect of the interior, including the driver seat and rear passenger legroom as well as the size and location of storage spaces. The refined **DUAL COCKPIT** is inviting, with subtle **AMBIENT LIGHTING** to help see inside the cabin during nighttime driving and chrome accents that reinforce the premium feel. The driver seat articulates and adjusts to fit you comfortably, and the tilt and telescoping steering wheel also adjusts so everything's within reach. Rear passengers can relax in a standard **MULTIFLEX SLIDING REAR SEAT**, which travels nearly eight inches. The

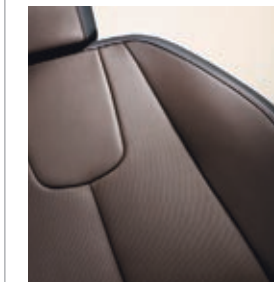


The rear seats offer the most legroom in the class<sup>1</sup> – more than Toyota RAV4, Honda CR-V and Ford Escape. And besides offering up to 63.7 cu. ft. of cargo space,<sup>2</sup> Equinox also has a number of storage areas and a deep center console for a laptop or purse.

reclining 60/40 split-folding rear seatback gives you flexibility when storing cargo. And helping contribute to a quiet cabin are **ACOUSTIC LAMINATED GLASS**, triple door seals and liquid-applied sound dampener. The overall interior experience is stylish, **COMFORTABLE** and **QUIET**. By design.

## EQUINOX

See a photo gallery of the all new Equinox at [chevy.com/allnewequinox](https://chevy.com/allnewequinox)



The difference is in the details. Color-contrasted stitching catches your eye, and side bolsters adjust to your body.

## EQUINOX

See Equinox in all its colors at [chevy.com/allnewequinox](http://chevy.com/allnewequinox)

### HIGHLY STYLISH. HIGHLY AFFORDABLE.



Equinox LTZ has style that matches its substance. Sleek design with sculpted lines and large projector headlamps highlight the exterior.

Equinox is beautiful inside and out. Its style is the result of design, craftsmanship and value – all perfectly reflected in the final product. The design is **REFINED** and balanced, with an aerodynamic windshield and clean, **SCULPTED** body lines. The widened track and lowered roof give it a powerful stance and a self-assured presence on the road. Standard 17" **ALUMINUM WHEELS** and available **CHROME** highlights on the door handles, rearview mirrors and roof rack add balance and beauty. Large **JEWEL-LIKE** headlamps and taillamps provide the finishing touches. The overall result is quality and refinement – at a remarkably affordable price.



Equinox LTZ in Silver Ice Metallic shown with available 19" chrome-clad aluminum wheels and other available features.





## WHAT YOU NEED. WHAT YOU WANT. WHAT YOU DIDN'T KNOW YOU COULD HAVE.

Equinox offers many surprising features to make your life easier. Its available **POWER-PROGRAMMABLE LIFTGATE** adjusts to your height and can be conveniently opened by remote. An available advanced remote start

can gauge the temperature outside and change your settings so it feels just right by the time you take your seat. Ambient lighting is placed throughout, including ice blue lighting in the cup holders that makes them easier to find while driving. Available **ONSTAR<sup>1</sup> TURN-BY-TURN NAVIGATION<sup>2</sup>** offers you simple voice-guided directions at the touch of a button. Available **BLUETOOTH<sup>®</sup>** wireless technology<sup>3</sup> for select compatible phones lets you keep your hands on the wheel, and an available **USB PORT** allows you to plug in your iPod<sup>®4</sup> and control it through the audio system. XM Radio<sup>5</sup> with three trial months is standard. And to make getting in and out of the vehicle easier, rocker panels have been integrated into the doors, rather than on the body of the vehicle, to help keep you from getting dirty.



XM NavTraffic<sup>6</sup> enhances your vehicle's available GPS navigation system by showing real-time traffic data when it's needed most – while you're driving. It can alert you to construction and accidents to help keep you on time.

Equinox LTZ interior in Brownstone shown with available features, including the rear-seat entertainment system with dual seat-mounted DVD players. 1 Call 1-888-4ONSTAR (1-888-466-7827), visit onstar.com and see page 18 for details and system limitations. 2 Requires Directions & Connections Plan. Not available in certain areas. Visit onstar.com for coverage map. 3 Go to gm.com/bluetooth to find out which Bluetooth phones are compatible with the vehicle. 4 Not compatible with iPod<sup>®</sup> shuffle.<sup>™</sup> May not be compatible with some older iPod models. 5 XM Radio requires a subscription, sold separately by XM after the first 90 days. XM Radio U.S. service only available in the 48 contiguous United States and the District of Columbia. For more information, visit gm.xmradio.com. 6 Service not available in Canada, Alaska and Hawaii. XM Radio subscription required and sold separately after trial period. Fees, taxes, and a one-time reactivation fee may apply. Subscriptions governed by XM Customer Agreement available at xmradio.com. All fees and programming subject to change. Family programming packages are available.

### EQUINOX

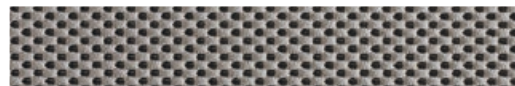
For a 360-degree view, visit  
[chevy.com/allnewequinox](http://chevy.com/allnewequinox)



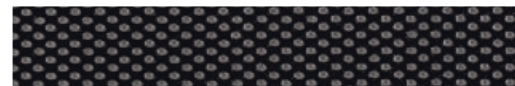
## FABRICS. COLORS. WHEELS.



Light Titanium Color Cloth



Light Titanium Color Premium Cloth



Jet Black Premium Cloth



Light Titanium Color Leather Appointments



Brownstone Leather Appointments



Jet Black Leather Appointments



Navy Blue Metallic



Cyber Gray Metallic



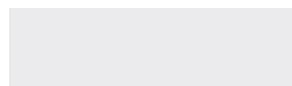
Silver Ice Metallic



Black



Gold Mist Metallic<sup>1</sup>



Summit White



Cardinal Red Metallic



Black Granite Metallic<sup>1</sup>  
(extra-cost color)



Mocha Steel Metallic

<sup>1</sup> Not available on LS.

**01** 17" painted aluminum wheel. Standard on all models.

**02** 18" machined-aluminum wheel. Available on 1LT, 2LT and LTZ models. Required with available V6 engine. Interim availability with four-cylinder engine on 2LT and LTZ.

**03** 19" chrome-clad aluminum wheel. Available on LTZ FWD models. Requires available V6 engine.



## YOUR EQUINOX. YOUR WAY. AVAILABLE DEALER-INSTALLED ACCESSORIES

**01** Chrome door handles.

**02** Chrome mirrors.

**03** 19" chrome wheel.

**04** Premium all-weather floor mats.

### SEE MORE AT CHEVY.COM:

- Cargo area organizer.
- Cargo security shade.
- Molded splash guards.



**03**



**04**



### ACCESSORIES

Every Chevy Accessory is covered by the GM 3-year/36,000-mile (whichever comes first) New Vehicle Limited Warranty when ordered with your vehicle. See your dealer or visit [chevy.com/allnewequinox](http://chevy.com/allnewequinox) for details and a closer look at more available accessories.



# EQUINOX FEATURES.

S = Standard O = Optional — = Not Available

## EXTERIOR

	LS	1LT	2LT	LTZ
Bumpers: front and rear body-color with Charcoal lowers	S	S	S	—
Bumpers: front and rear body-color with bright front and rear lowers	—	—	O <sup>1</sup>	S
Chrome Appearance Package: body-color bumpers with bright front and rear lowers; bright chrome door handles; chrome, heated, power, manual-folding mirrors; roof rack side rails with bright chrome inserts; and Ultrasonic Rear Parking Assist	—	—	O	S
Foglamps: front halogen	—	—	S	S
Headlamps: halogen, uplevel projector-style	—	—	—	S
Liftgate: rear manual with fixed glass	S	S	S	—
Liftgate: power-programmable rear with fixed glass	—	—	O	S
Mirrors, outside: black, manual-folding	S	—	—	—
Mirrors, outside: body-color, power, heated, manual-folding	—	S	S	S <sup>2</sup>
Roof rack side rails	—	S	S	S

## ENGINES/CHASSIS

Engine: 2.4L ECOTEC DOHC SIDI 4-cylinder VVT with 182 hp	S	S	S	S
Engine: 3.0L DOHC SIDI V6 VVT with 264 hp	—	O <sup>3</sup>	O <sup>3</sup>	O <sup>3</sup>
Fuel tank: 18-gal. (4-cyl.)/20-gal. (V6) approx. capacity	S	S	S	S
Steering: power, variable-assist, electric	S	S	S	S
Steering: power, variable-assist, hydraulic	—	O <sup>4</sup>	O <sup>4</sup>	O <sup>4</sup>
Suspension: front, independent struts	S	S	S	S
Suspension: rear, multilink independent, with hydraulic rear trailing arm links and stabilizer bar	S	S	S	S
Tire Pressure Monitor (does not include spare tire)	S	S	S	S
Transmission: six-speed automatic with overdrive	S	S	S	S

## INTERIOR

Air conditioning: manual climate control	S	S	—	—
Air conditioning: automatic climate control	—	—	S	S
Cargo Management Package: rear cargo security cover, cargo convenience net and roof rack center rails	—	O	O	S
Door locks: power, programmable	S	S	S	S
Driver Information Center (includes compass on LT and LTZ)	S	S	S	S
Floor mats: carpeted, front and rear	O	S	S	S

## INTERIOR (CONTINUED)

	LS	1LT	2LT	LTZ
Instrumentation: speedometer, trip odometer, engine temperature, fuel level and tachometer	S	S	S	S
Memory: settings for driver seat and exterior mirrors	—	—	—	S
Mirror, inside rearview: — manual day/night — auto-dimming	S	S	—	—
Vehicle Interface Package: includes Bluetooth® wireless technology <sup>6</sup> for select compatible phones, leather-wrapped steering wheel with mounted audio controls, USB port connectivity and Remote Vehicle Starter System	—	O <sup>5</sup>	S	S
Steering wheel: tilt and telescoping	S	S	S	S
Sunroof: power, tilt/sliding, with Express-Open feature	—	O	O	O
Windows: power with Express-Down feature (all windows) and passenger lockout	S	S	S	S

## SAFETY & SECURITY

Air bags: <sup>7</sup> driver and right-front passenger, dual-stage, frontal with Passenger Sensing System; thorax side-impact, seat-mounted, driver and right front passenger; head-curtain, side-impact for front and rear outboard seating positions	S	S	S	S
All-wheel drive	O	O	O	O
Brakes: four-wheel antilock disc	S	S	S	S
Daytime Running Lamps with Automatic Exterior Lamp Control	S	S	S	S
LATCH (Lower Anchors and Top tethers for Children) system	S	S	S	S
OnStar: <sup>8</sup> one-year Safe & Sound Plan	S	S	S	S
Rearview camera system	—	O	S	S
Remote Keyless Entry: two transmitters	S	S	S	S
StabiliTrak Electronic Stability Control System	S	S	S	S
Theft-deterrent system: content-theft alarm	S	S	S	S
Traction Control	S	S	S	S

## AUDIO SYSTEMS

NOTE: All Equinox stereo audio systems include an Electronically Tuned Receiver (ETR) and an AM/FM/XM<sup>9</sup> stereo with seek-scan, a digital clock, an auxiliary audio input jack for iPod®/MP3 player and Radio Data System (RDS)<sup>10</sup> technology.

AM/FM/XM <sup>9</sup> stereo with CD/MP3 player and six-speaker system <sup>11</sup>	S	S	S	S
--	---	---	---	---

## AUDIO SYSTEMS (CONTINUED)

	LS	1LT	2LT	LTZ
Audio system with Rear-Seat Entertainment, AM/FM/XM <sup>9</sup> stereo with CD/DVD player, MP3/WMA playback capability, DVD audio and video playback capability, 2 GB flash memory, dual rear eight-inch-diagonal displays, video jacks on each unit, remote control and two wireless headsets	—	—	O	O
Audio system with Navigation <sup>12</sup> /Infotainment, AM/FM/XM <sup>9</sup> stereo, CD player with MP3/WMA playback capability, seven-inch-diagonal touch-screen Color Interface Display (CID), enhanced DVD-based navigation with voice recognition and 40 GB hard drive	—	—	O	O
Audio system with Navigation <sup>12</sup> /Infotainment and Rear Seat Entertainment, AM/FM/XM <sup>9</sup> stereo with CD/DVD player, MP3/WMA playback capability, seven-inch-diagonal touch-screen CID, enhanced DVD-based navigation with voice recognition, 40 GB hard drive, dual rear eight-inch-diagonal displays, video jacks on each unit, remote control and two wireless headsets	—	—	O	O
Pioneer premium eight-speaker system: includes subwoofer and amplifier	—	O <sup>13</sup>	S	S
XM Radio: <sup>9</sup> with three trial months	S	S	S	S

## SEATING

Front, driver, with power lumbar and power height adjuster	S	S	—	—
Front, driver, with eight-way power: includes power fore/aft, up/down, tilt cushion and recline	—	O	S	S
MultiFlex sliding rear seat with 60/40 split-folding seatback and three-position recline	S	S	S	S
Front and rear, leather-appointed with perforated leather inserts and heated front seats	—	—	O	S

## WHEELS/TIRES

Wheels: — 17-inch painted aluminum — 18-inch machined-aluminum — 19-inch chrome-clad aluminum	S	S	S	S
	—	O <sup>14</sup>	O <sup>15</sup>	O <sup>15</sup>
	—	—	—	O <sup>16</sup>
Tires: — all-season blackwall P225/65R-17 — all-season blackwall P235/55R-18 — all-season blackwall P235/55R-19	S	S	S	S
	—	O	O	O
	—	—	—	O

**1** Requires available Chrome Appearance Package. **2** Chrome on LTZ. **3** Requires available 18- or 19-inch aluminum wheels and Pioneer premium eight-speaker system. **4** With available V6 engine. **5** Requires available rearview camera system. **6** Go to gm.com/bluetooth to find out which Bluetooth phones are compatible with the vehicle. **7** Always use safety belts and the correct restraint for your child's age and size. Even in vehicles equipped with the Passenger Sensing System, children are safer when properly secured in a rear seat in the appropriate infant, child or booster seat. Never place a rear-facing infant restraint in the front seat of any vehicle equipped with a passenger air bag. See the Owner's Manual and child safety seat instructions for more safety information. **8** Call 1-888-4ONSTAR (1-888-466-7827), visit onstar.com and see page 18 for details and system limitations. **9** XM Radio requires a subscription, sold separately by XM after the first 90 days. XM Radio U.S. service only available in the 48 contiguous United States and the District of Columbia. For more information, visit gm.xmradio.com. **10** RDS functions only where stations broadcast RDS information. **11** Eight speakers included on 2LT and LTZ. **12** Map coverage excludes portions of Canada, Puerto Rico and the Virgin Islands. **13** Required with available V6 engine. **14** Required and only available with optional V6 engine. **15** Required with optional V6 engine. Interim availability with four-cylinder engine. **16** LTZ FWD V6 only. **17** Requires available V6 engine; includes receiver hitch and harness.

# SELECT AVAILABLE FEATURES.

## EQUINOX LS

- Floor mats, front and rear

## EQUINOX 1LT

- 3.0L DOHC V6 VVT SIDI with 264 hp<sup>3</sup>
- 18-inch machined-aluminum wheels<sup>14</sup>
- Vehicle Interface Package: Bluetooth® wireless technology<sup>6</sup> for select compatible phones, leather-wrapped steering wheel with mounted audio controls, USB port connectivity and Remote Vehicle Starter System

- Cargo Management Package: rear cargo security cover, cargo convenience net and roof rack center rails

- Pioneer premium 250-watt eight-speaker system with subwoofer and amplifier

- Rearview camera system

- Front driver seat with eight-way power: power fore/aft, up/down, tilt cushion and recline

- Sunroof, power, tilt-sliding, with Express-Open feature and wind deflector

## EQUINOX 2LT

- 3.0L DOHC V6 VVT SIDI with 264 hp<sup>3</sup>
- 18-inch machined-aluminum wheels<sup>15</sup>

- Audio system with Rear-Seat Entertainment

- Audio system with Navigation<sup>12</sup>/Infotainment

## EQUINOX 2LT (CONTINUED)

- Audio system with Navigation<sup>12</sup>/Infotainment and Rear-Seat Entertainment

- Cargo Management Package: rear cargo security cover, cargo convenience net and roof rack center rails

- Chrome Exterior Appearance Package with Ultrasonic Rear Parking Assist

- Front and rear leather-appointed seats: with perforated leather inserts and heated front seats

- Liftgate, power-programmable rear

- Sunroof, power, tilt-sliding, with Express-Open feature and wind deflector

- Trailer equipment<sup>17</sup>

## EQUINOX LTZ

- 3.0L DOHC V6 VVT SIDI with 264 hp<sup>3</sup>
- 18-inch machined-aluminum wheels<sup>15</sup>
- 19-inch chrome-clad aluminum wheels<sup>16</sup>

- Audio system with Rear-Seat Entertainment

- Audio system with Navigation<sup>12</sup>/Infotainment

- Audio system with Navigation<sup>12</sup>/Infotainment and Rear-Seat Entertainment

- Sunroof, power, tilt-sliding, with Express-Open feature and wind deflector

- Trailer equipment<sup>17</sup>

## CHEVY

For more information about ownership extras, please visit the websites below.



onstar.com



ACCESSORIES

chevy.com/accessories



gm.xmradio.com



chevy.com/warranty

# THE BEST COVERAGE IN AMERICA.

**100,000 MILE/5-YEAR TRANSFERABLE POWERTRAIN LIMITED WARRANTY.** Every 2010 Chevy passenger car, light-duty truck, SUV and crossover comes with a 100,000 mile/5-year (whichever comes first) transferable Powertrain Limited Warranty. Plus, you get 100,000 miles/5 years (whichever comes first) of the 24/7 Roadside Assistance Program and the Courtesy Transportation Program and much more. See dealer for details.

**NEW VEHICLE LIMITED WARRANTY.** GM vehicles registered in the U.S.A. are covered for 3 years/36,000 miles (whichever comes first). The complete vehicle is covered, including tires, towing to your nearest Chevrolet dealership and cosmetic corrosion resulting from defects. Repairs will be made to correct any vehicle defect, and most warranty repairs will be made at no charge. In addition, rust-through corrosion will be covered for 6 years/100,000 miles (whichever comes first). See dealer for details.

**ENGINES.** Chevrolet products are equipped with engines produced by GM Powertrain or other suppliers to GM worldwide. The engines in Chevrolet products may also be used in other GM makes and models.

**ASSEMBLY.** Chevrolet vehicles and their components are assembled or produced by different operating units of General Motors, its subsidiaries or suppliers to GM worldwide. We sometimes find it necessary to produce Chevrolet vehicles with different or differently sourced components than originally scheduled. Since some options may be unavailable when your vehicle is assembled, we suggest you verify that your vehicle includes the equipment you ordered and that, if there were changes, they are acceptable to you.

**ONSTAR.** OnStar services require vehicle electrical system (including battery), wireless service and GPS satellite signals to be available and operating for features to function properly. OnStar acts as a link to existing emergency service providers. Subscription Service Agreement required. Call 1-888-4ONSTAR (1-888-466-7827) or visit onstar.com for OnStar Terms and Conditions, Privacy Statement, and details and system limitations.

**A NOTE ABOUT CHILD SAFETY.** Always use safety belts and the correct restraint for your child's age and size. Even in vehicles equipped with the Passenger Sensing System, children are safer when properly secured in a rear seat in the appropriate infant, child or booster seat. Never place a rear-facing infant restraint in the front seat of any vehicle equipped with a passenger air bag. See the Owner's Manual and child safety seat instructions for more safety information.

**IMPORTANT WORDS ABOUT THIS CATALOG.** We have tried to make this catalog comprehensive and factual. We reserve the right, however, to make changes at any time, without notice, in prices, colors, materials, equipment, specifications, models and availability. Specifications, dimensions, measurements, ratings and other numbers in this catalog and other printed materials provided at the dealership or affixed to vehicles are approximates based upon design and engineering drawings, prototypes and laboratory tests. Your vehicle may differ due to variations in manufacture and equipment. Since some information may have been updated since the time of printing, please check with your Chevrolet dealer for complete details. Chevrolet reserves the right to lengthen or shorten the model year for any product for any reason or to start and end model years at different times. Certain vehicle features may lose their usefulness over time due to obsolescence from technological changes. Unless otherwise noted, all claims based on 2009 GM Compact-Utility Crossover segment and latest available competitive information. Excludes other GM vehicles.

At Chevrolet, giving you a completely satisfying ownership experience is our top priority. That's why if you ever need assistance, feel free to contact us at these web sites or phone numbers.

**CHEVY.COM.** Offers shopping tools such as Build and Price, Find a Vehicle, Request Info, Email Sign-Up, Compare Vehicles, Financial Tools...and much more.

**24-HOUR ROADSIDE ASSISTANCE PROGRAM (1-800-CHEV-USA).** The Chevrolet Roadside Assistance Program provides you with the following services for 100,000 miles or 5 years (whichever comes first): Emergency Towing (to closest Chevy dealer from a legal roadway), Lockout Service (keys locked inside vehicle), Flat Tire Changes (spare installed), Fuel Delivery (\$5 worth of fuel delivered on the road) and Jump Starts (at home or on the road). For specific terms and conditions, please contact your Chevrolet Roadside Assistance advisor at 1-800-243-8872. Some services may incur costs.

**COURTESY TRANSPORTATION PROGRAM.** Ask your Chevrolet dealer for Courtesy Transportation if you leave your vehicle for extended repairs under the New Vehicle Limited Warranty or Powertrain Limited Warranty. Ask if you qualify for expense reimbursement and/or vehicle rental. Services vary by dealer.

**CHEVROLET CUSTOMER ASSISTANCE CENTER (1-800-222-1020).** Talk directly to customer relationship managers who can handle any inquiries related to vehicle operation, warranty coverages, or product or service concerns you may have. Please refer to your Owner's Manual for Customer Assistance information.

**CHEVY.COM/SAFETY.** Chevrolet is committed to keeping you and your family safe — from the start of your journey to your destination. That's why every Chevrolet is designed with a comprehensive list of safety and security features to help give you peace of mind.

**GMMOBILITY.COM (1-800-323-9935).** GM Mobility offers financial assistance for eligible adaptive equipment to make automotive travel easier for persons with disabilities or special transportation needs. To learn more about special GM Mobility offers, visit gmmobility.com.

**CHEVROLET OWNER CENTER (GMOWNERCENTER.COM/CHEVY).** Register your vehicle with the Chevrolet Owner Center, and receive benefits such as online access to your vehicle Owner's Manual, maintenance schedule reminders, service history tracking, warranty and service information, safety information, special offers and privileges, and news and events.

**MARKETING AND INCENTIVES (CHEVY.COM/SPECIALOFFERS).** Call 1-800-950-CHEV (1-800-950-2438) or visit chevy.com/specialoffers for new product, current incentive and marketing program information.

**GM CARDMEMBERSERVICES.COM.** Did you know about the family of reward credit cards that can help you get a great deal on a new GM car, light-duty truck, SUV or crossover? With a GM reward card, you accrue earnings on every credit card purchase to use toward the purchase or lease of an eligible, new GM vehicle. With three cards to choose from, you're sure to find one that suits you best.

GM, the GM Logo, Chevrolet, the Chevrolet Logo, and the slogans, emblems, vehicle model names, vehicle body designs and other marks appearing in this catalog are the trademarks and/or service marks of General Motors Corporation, its subsidiaries, affiliates or licensors. OnStar, the OnStar emblem, Safe & Sound and Directions & Connections are registered trademarks of OnStar LLC. SIRIUS, XM and all related marks and logos are trademarks of SIRIUS XM Radio Inc. and its subsidiaries. The Bluetooth word mark is a registered trademark owned by Bluetooth SIG, Inc. and any use of such mark by Chevrolet is under license. iPod is a mobile digital device. iPod is a registered trademark of Apple, Inc. All rights reserved. Pioneer is a registered trademark of the Pioneer Corp. ©2009 General Motors Corporation. All rights reserved.

Litho in USA. May 2009



Equinox LTZ in Silver Ice Metallic.