

2010 GMC TERRAIN





## TERRAIN

THE ALL-NEW TERRAIN FOCUSES GMC'S HISTORY OF INNOVATION AND ENGINEERING EXCELLENCE ON SATISFYING THE DEMANDS OF TODAY'S TIME-CONSTRAINED, MULTIFACETED LIFESTYLES. COMBINING THE BENEFITS OF A CROSSOVER WITH THE STYLE AND FUNCTIONALITY OF AN SUV, TERRAIN OFFERS BOTH UNCOMPROMISED CAPABILITY AND A SURPRISING LEVEL OF STANDARD CONTENT. WITH ITS BALANCED STANCE AND COMMANDING VIEW OF THE ROAD, OCCUPANTS ENJOY A CONFIDENT DRIVING EXPERIENCE, UNEXPECTED HANDLING PRECISION AND RIDE QUALITY. OUTSTANDING SEAT COMFORT IS MATCHED WITH FLEXIBLE UTILITY AND INNOVATIVE TECHNOLOGY. AND AT 32 HWY. EPA-ESTIMATED MPG,<sup>1</sup> TERRAIN IS EVERYTHING THAT HAPPENS WHEN YOU ENGINEER TO EXCEED EXPECTATIONS.



## INTRODUCING THE ALL-NEW 2010 GMC TERRAIN

### SMART TECHNOLOGY

STANDARD:  
REARVIEW CAMERA SYSTEM  
SOUND SYSTEM USB PORT  
ONE-YEAR ONSTAR SERVICE<sup>2</sup>  
XM RADIO<sup>3</sup>

.....

AVAILABLE:  
PROGRAMMABLE POWER  
LIFTGATE  
BLUETOOTH<sup>®</sup>  
CONNECTIVITY<sup>4</sup>  
REMOTE VEHICLE START  
DUAL-SCREEN HEADREST-  
MOUNTED REAR-SEAT  
ENTERTAINMENT SYSTEM

### DIRECT-INJECTION ENGINES

2.4L I-4 FWD

**32** MPG  
EPA-EST. HWY.

HIGHWAY RANGE UP TO

**600** MILES

6-SPEED AUTOMATIC  
TRANSMISSION

<sup>1</sup>EPA-estimated mpg: 2.4L I-4 22 city/32 hwy. FWD; 20 city/29 hwy. AWD; 3.0L V-6 17 city/25 hwy. FWD, 17 city/24 hwy. AWD. <sup>2</sup>Call 1-888-4ONSTAR (466-7827) or visit onstar.com for details and system limitations. <sup>3</sup>XM Radio requires a subscription, sold separately by XM after the first 90 days. XM Radio U.S. service only available in the 48 contiguous United States and the District of Columbia. For more information, visit gm.xmradio.com. <sup>4</sup>Go to gm.com/bluetooth to find out which Bluetooth phones are compatible with the vehicle.

TERRAIN  
IN CARBON BLACK METALLIC  
SHOWN WITH AVAILABLE  
EQUIPMENT

### TABLE OF CONTENTS

- 02 \_ THE CABIN
- 04 \_ INTERIOR FEATURES
- 06 \_ MULTITASKING MASTERY
- 10 \_ INTEGRATED TECHNOLOGY
- 12 \_ FITTING IN
- 14 \_ RIDE AND HANDLING
- 16 \_ EFFICIENT POWER
- 18 \_ SAFETY
- 20 \_ FEATURES AND OPTIONS
- 22 \_ GMC ACCESSORIES



02 \_ THE CABIN

TERRAIN SLT-2 INTERIOR IN LIGHT TITANIUM SHOWN WITH AVAILABLE EQUIPMENT



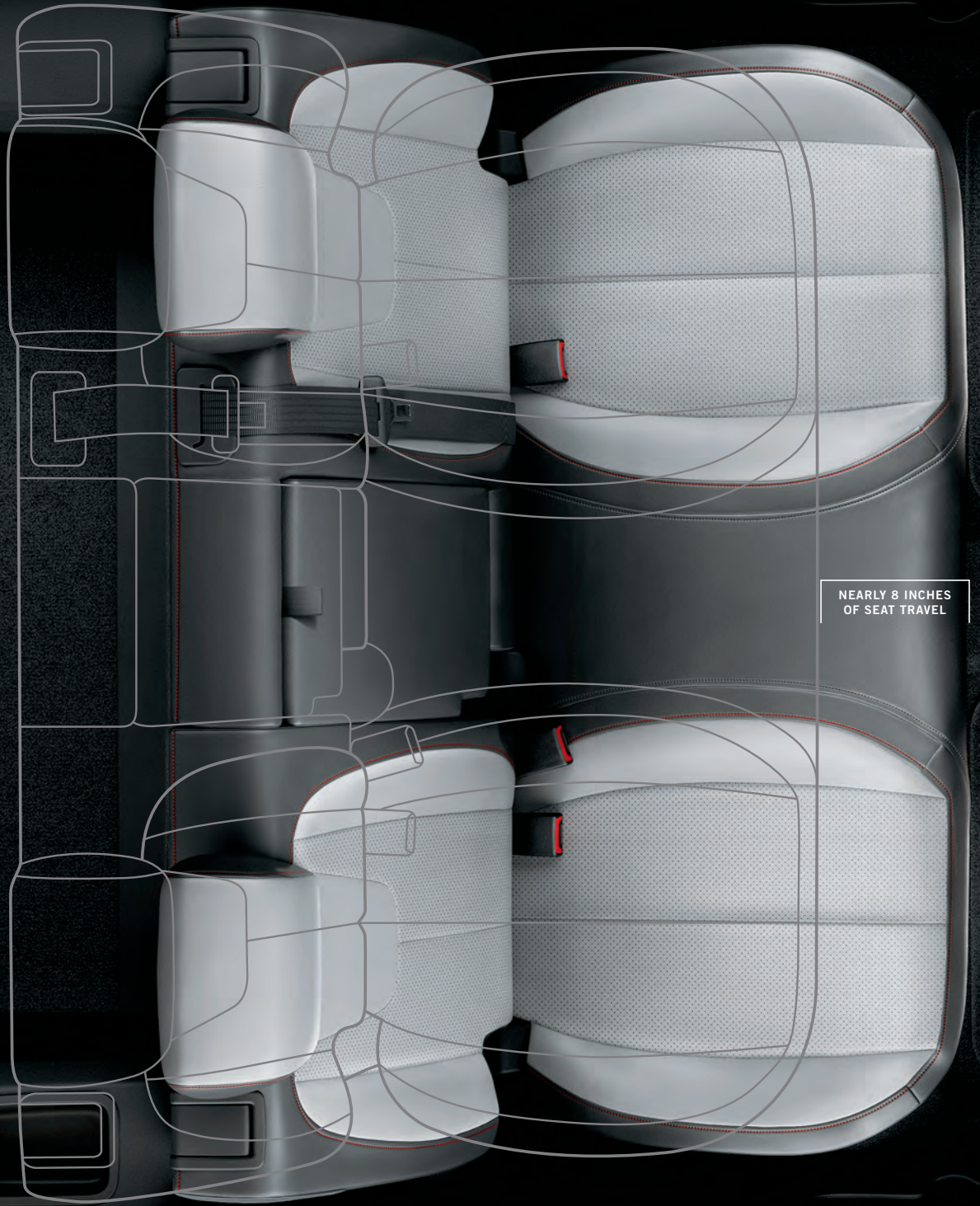
## PASSIONATE CRAFTSMANSHIP

Terrain's interior reflects GMC's signature attention to detail. The cabin's highly structured look is finished in fine premium materials with contrast stitching in GMC red. Warm red ambient lighting on the cupholders, door pulls and around the center control panel lends a "floating" appearance and adds convenience while traveling at night.



## INNER SPACE

Seating is comfortable all around. Front buckets are highly bolstered, helping to create an enjoyable driving experience. The standard MultiFlex sliding rear seat offers nearly 8 inches of travel. In the back position, adult rear-seat passengers will enjoy more maximum second-row leg room than in any other vehicle in its class.<sup>1</sup> If you're traveling with young children, bringing the rear seat forward makes it easier to attend to their needs. A comprehensive package of standard safety features helps to provide that confident SUV feeling for all five passengers. For more on Terrain safety, see pages 18-19.



NEARLY 8 INCHES  
OF SEAT TRAVEL



5-PASSENGER SEATING



BEST-IN-CLASS<sup>1</sup>  
MAXIMUM SECOND-ROW LEG ROOM

STANDARD FRONT BUCKET SEATS/  
TILT/TELESCOPE STEERING WHEEL

AVAILABLE PERFORATED LEATHER-  
APPOINTED SEATING/HEATED FRONT  
SEATS/POWER DRIVER'S SEAT

EVARIANT

## FUNCTIONALITY FINISHED BEAUTIFULLY

### A PLACE FOR EVERYTHING

Terrain's inner SUV is always just seconds away. If you need to carry lots of gear, you can move the MultiFlex sliding second-row seat forward for maximum cargo room, creating over 31 cubic feet of cargo space behind the rear seats.<sup>1</sup> For added flexibility, the MultiFlex's folding seatbacks feature a 60/40 split to accommodate a mix of cargo and passengers. The front passenger seat also folds down, allowing you to haul longer items inside the cabin with the liftgate closed.



Smart storage space strategically deployed throughout the cabin includes an oversized glove box, a covered bin on top of the instrument panel for small items and two-tier door pockets (left) help keep other items close at hand.

For all its utility and flexibility, Terrain has the feel of a solid, upscale sedan, with extremely low levels of noise, vibration and harshness. And as you would expect with a premium vehicle, even areas such as the base of the seats, the cargo area and under the hood are finished to a high degree.



A large storage compartment under the center armrest easily accommodates a laptop (left) and conceals contents when closed (right).

### 06 \_ MULTITASKING MASTERY

TERRAIN SLT-2 IN QUICKSILVER METALLIC SHOWN WITH AVAILABLE EQUIPMENT

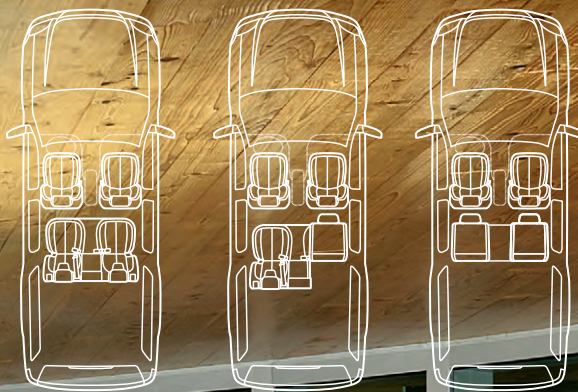
<sup>1</sup>Cargo and load capacity limited by weight and distribution.



**EASY ENTRY**  
Integrated rocker panels in front and rear doors create low step-in height.

**15"**





- >> MULTIFLEX SLIDING SECOND-ROW SEAT
- NEARLY 64 CU. FT. OF TOTAL CARGO VOLUME<sup>1</sup>
- 31.6 CU. FT. OF MAXIMUM CARGO VOLUME BEHIND THE REAR SEATS<sup>1</sup>
- 3 AUXILIARY POWER OUTLETS
- AVAILABLE PROGRAMMABLE POWER LIFTGATE (SEE PAGE 12)



Terrain's beautifully designed Integrated Center Stack (ICS) is your gateway to a wealth of purposeful and enjoyable technology. It combines all controls and interfaces for audio, climate, information and personalization functions. Information is presented via a monochrome, multiline LCD display or the 7-inch, touch-screen color display included with the available NAV system (see page 23).

Located in the center console storage area are an audio jack for MP3 devices and a USB port. The port recharges your iPod®/MP3 player while it plays audio from the device through the sound system. Your iPod play lists and folders show up on the sound system display, and you can operate the device with Terrain's sound system controls, including the steering-wheel-mounted controls (see following pages) standard on SLE-2 and SLT models.

All Terrain audio systems feature XM Radio<sup>1</sup> (see page 24), including 3 trial months of service.

Audiophiles will want to consider Terrain's premium audio offering, an eight-speaker, 250-watt Pioneer system with a CD/DVD player capable of playing surround-sound-encoded discs. It's standard on SLE-2 and SLT. Terrain's available Rear-Seat Entertainment System features twin wide-screen color

displays. Mounted in the front seatbacks, these LED modules can pivot a remarkable 205 degrees, allowing passengers of various heights to adjust them to their comfort. Auxiliary devices such as video games can be played independently, or a DVD movie can be played on one screen while gaming takes place on the other. Each module features integrated video and audio input jacks, or you can use jacks in the center console.



□ □ □ □ □



#### ELECTRONIC CHILD SAFETY LOCKS →

Standard equipment on all Terrain models includes "One-touch" electronic child safety door locks and a lockout switch. Simply pushing a button in the center console sends an electronic signal to the rear doors, blocking the function of the door handles. A user-friendly touch: The button is backlit in amber when the rear doors are unlocked, turning to red when locked (see left). In addition, all four doors are equipped with automatic and programmable power locks. As soon as vehicle velocity exceeds a few mph, all four doors lock automatically. A simple procedure allows you to tailor the unlock function to your convenience. For more on Terrain safety, please see pages 18-19.

<sup>1</sup>XM Radio requires a subscription, sold separately by XM after the first 90 days. XM Radio U.S. service only available in the 48 contiguous United States and the District of Columbia. For more information, visit [gm.xmradio.com](http://gm.xmradio.com).

# iPod Music Menu

- ▲ Shuffle Back
- ▬ Playlists ✓
- Artists (34) >
- Albums (858) >
- ▼ All Songs (739) >
- (3310) >

VOL

1 2 3 4 5 6

**dts** Digital Surround **DOBBY** DIGITAL

RADIO BAND HDD/DVD AUX

SEEK SEEK

SELECT

FAV TONE

INFO CONFIG

REC DEL

NAV BACK

DEST RPT

MENU SEL

AUTO

MENU



10 \_ INTEGRATED TECHNOLOGY

<sup>1</sup>Call 1-888-4ONSTAR (466-7827) or visit [onstar.com](http://onstar.com) for details and system limitations. <sup>2</sup>Map coverage for Puerto Rico and the Virgin Islands available on separate disc. Coverage not available for portions of Canada. <sup>3</sup>Go to [gm.com/bluetooth](http://gm.com/bluetooth) to find out which Bluetooth phones are compatible with the vehicle. <sup>4</sup>Ten GB available for music storage. <sup>5</sup>Required XM Radio and XM NavTraffic monthly subscriptions sold separately by XM after trial period. XM NavTraffic only available in select markets. For more information, visit [xmradio.com/navtraffic](http://xmradio.com/navtraffic). <sup>6</sup>Requires Directions & Connections plan. Not available in certain areas. Visit [onstar.com](http://onstar.com) for coverage map.



< << STANDARD REARVIEW CAMERA WITH REARVIEW-MIRROR DISPLAY

□□□□□



STANDARD REARVIEW CAMERA/ONSTAR<sup>1</sup> >> > AVAILABLE NAVIGATION<sup>2</sup>/BLUETOOTH<sup>3</sup>/SMART REMOTE START >> >

A standard rearview camera standard on all Terrain models features an inside rearview mirror display. Shift into reverse, and a view of what's behind the vehicle appears in a portion of the rearview mirror, as shown below. It's a great aid for parking or backing down a long driveway. If you order the available Touch-Screen Navigation System<sup>2</sup> (shown on page 23), the camera display will appear on the NAV screen. To further aid in parking, Ultrasonic Rear Parking Assist is standard on SLT-2 models.

Terrain's available NAV system includes a 40GB hard drive, a portion of which is available for music storage.<sup>4</sup> Using Terrain's standard USB jack, digital audio music files such as MP3s can be copied to the hard drive for later playback. The system also allows you to pause and record up to 20 minutes of radio broadcast (audio file will be deleted when ignition is turned off). In addition, the system includes a 3-month trial of XM NavTraffic<sup>5</sup> (see page 24.)

A standard one-year Safe & Sound plan<sup>1</sup> is standard on all Terrain models, and the OnStar Directions & Connections plan—with OnStar Turn-by-Turn Navigation<sup>6</sup>—is available (see page 24).

Available Bluetooth<sup>3</sup> connectivity allows you to integrate your own Bluetooth phone for in-vehicle hands-free operation. Steering-wheel-mounted controls let you start a call and control volume, then dial by voice and listen to your call through the vehicle's

audio system. After a quick setup, connection and disconnection occur automatically each time you enter or exit the vehicle.

Remote keyless entry is standard on Terrain. Available Smart Remote Start provides additional convenience. It operates from distances over 300 feet (a football field) with the touch of the key fob. In addition to starting the engine, it activates climate control systems to prepare the vehicle for your arrival.



CONTEMPORARY FORMS

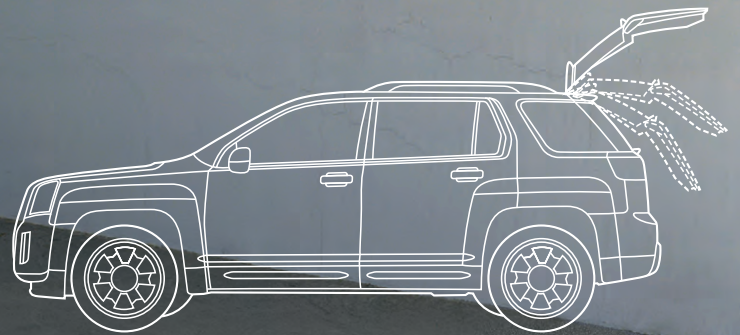
12 \_ FITTING IN

TERRAIN SLT-2 IN QUICKSILVER METALLIC SHOWN WITH AVAILABLE EQUIPMENT



#### AVAILABLE PROGRAMMABLE POWER LIFTGATE

Intermediate stop position can be customized for your convenience. Electronic obstacle detection helps prevent damage to liftgate.



#### EFFICIENT DESIGN; EMPOWERING TECHNOLOGY

Terrain offers a contemporary version of “go-anywhere” utility. Its just-right dimensions and standard rearview camera (page 10) put you in command of tight spots—like parking garages. The available programmable power liftgate is also engineered to fit into real-world conditions. You can program it to open to different heights, depending on your own height and where you are parking. Electronic obstacle detection provides safe operation. Operation is hydraulic—yet another Terrain feature associated with high-end vehicles—which is to say it is smooth, quiet and fast. You can operate it with the key fob, a button on the overhead console, a touchpad switch on the liftgate handle and on a panel inside the liftgate opening. This is innovation you will appreciate the first time you approach the vehicle with your arms occupied by packages, camping gear or with children in tow.





14 \_ RIDE AND HANDLING

TERRAIN SLT-2 IN CARBON BLACK METALLIC SHOWN WITH AVAILABLE EQUIPMENT





# 3500<sup>LBS</sup>

TRAILER RATING<sup>1</sup>  
3.0L V-6 VVT DI (LFI)

---

#### STABILITY CONTROL/TRACTION CONTROL STANDARD

---

Helping to keep you firmly in control, the StabiliTrak stability control system and full-function traction control are both standard. StabiliTrak is an engineering advance designed to improve safety, stability and control on most road surfaces. Sensors read the position of your steering wheel, vehicle speed, brake pressure, lateral acceleration

and turning rate, and feed the data to an onboard computer. If conditions cause an inadequate response to your steering input, the computer adjusts both engine speed and brake pressure to individual wheels to help you keep on track. Terrain's StabiliTrak system also includes sensors programmed to help lessen the chance of a rollover.

---

#### HOLD STEADY

---

Terrain brakes have an ingenious hill-hold feature. If you stop on a hill—at a traffic light or a stop sign, for instance—it keeps the vehicle from rolling back while you're moving your foot from brake to accelerator. It's one of many engineering applications that make Terrain a pleasure to drive.

---

#### THE CONFIDENCE OF BEING CONNECTED

---

Terrain is engineered to provide a confident driving experience that is both smooth and responsive. Coupled with its rigid steel structure, Terrain's long wheelbase and wide, athletic stance help create the sensation of being connected to the road. Building on that firm foundation, our engineers specified components you might associate with a premium sport sedan: four-wheel independent suspension, variable-assist rack-and-pinion power steering and vented four-wheel disc brakes

with ABS. Precisely tuning those elements, they were able to give Terrain impressive handling characteristics. And for all its utility, Terrain delivers a comfortable ride.

Terrain's available intelligent All-Wheel-Drive (AWD) system delivers power to the front wheels during normal driving, channeling it to the rear wheels as well in conditions such as rain-slick pavement, snow or mud. It works seamlessly and automatically, with no action required by the driver.

<sup>1</sup>Maximum trailer weight ratings are calculated assuming base vehicle, except for any options necessary to achieve the rating, plus driver. The weight of optional equipment, passengers, cargo and required trailering equipment will reduce the maximum trailer weight your vehicle can tow. See your dealer for details.



**GM**

2.4L I-4 FWD

**32** MPG  
EPA-EST. HWY.

HIGHWAY RANGE UP TO

**600** MILES

**V6 VVT**  
DIRECT INJECTION

#### SMART ENGINES. SMART PERFORMANCE.

Both Terrain engines feature advanced direct-injection technology. This allowed engineers to dial in a combination of performance, low emissions and excellent fuel economy.<sup>1</sup> The standard 2.4L I-4 on the FWD model offers a highway range of up to 600 miles, and the available 3.0L V-6 is good for up to 500. Both are coupled with efficiency-enhancing 6-speed automatic transmissions for a refined, confident driving experience.

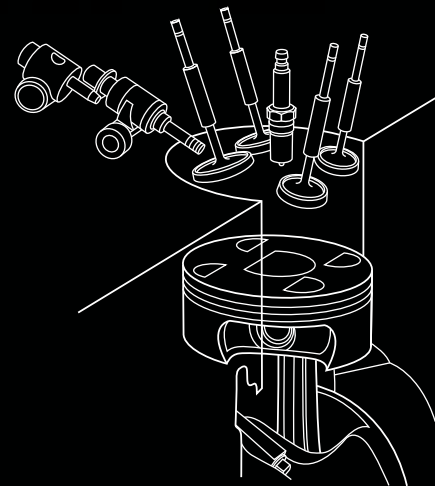
The 2.4L I-4 comes with an “ECO” mode that allows the driver to help save fuel. Activated via a console-mounted button, it makes a slight sacrifice in acceleration in exchange for additional fuel economy. The 2.4L also incorporates active noise cancellation technology, analyzing interior sounds and sending counteracting sound waves through the audio system’s speakers, ensuring a quiet driving experience at almost all vehicle speeds. If your goal is performance, choose the 3.0L V-6. You’ll experience a 0-to-60 mph time of 7.8 seconds—and still enjoy excellent fuel economy.

A one-year OnStar Safe & Sound plan<sup>2</sup> is standard on all Terrain models. If you subscribe, OnStar can send you monthly e-mail reports of the results of key operating system checks, including the engine, transmission and more, and send you reminders of scheduled maintenance to promote maximum engine performance.

16 \_ EFFICIENT POWER

#### DIRECT INJECTION

Direct injection is the culmination of a decades-long evolutionary process by which engineers continually moved the point of fuel introduction ever closer to the point of ignition. In both Terrain engines, fuel is injected directly into the combustion chamber, right next to the spark plug. In addition, digital sensors allow each injection of fuel to precisely match power demand, resulting in cleaner burning and efficient operation. And instead of having to tune the engine for power or economy, engineers are able to dial in both.



#### DIRECT INJECTION

Both Terrain engines feature four valves per cylinder with center spark plug. Fuel injector shown at top left of illustration. 3.0L V-6 VVT shown.

<sup>1</sup>EPA-estimated mpg: 2.4L I-4 22 city/32 hwy. FWD, 20 city/29 hwy. AWD; 3.0L V-6 17 city/25 hwy. FWD, 17 city/24 hwy. AWD. <sup>2</sup>Call 1-888-4ONSTAR (466-7827) or visit [onstar.com](http://onstar.com) for details and system limitations.



2.4L I-4 DI ENGINE

**22** CITY | **32** HWY.  
EPA-ESTIMATED MPG FWD

182 HP/172 LB-FT OF TORQUE  
20 CITY/29 HWY. AWD

3.0L V-6 DI ENGINE

**17** CITY | **25** HWY.  
EPA-ESTIMATED MPG FWD

264 HP/222 LB-FT OF TORQUE  
17 CITY/24 HWY. AWD

TERRAIN SLT-2 IN CARBON BLACK METALLIC SHOWN WITH AVAILABLE EQUIPMENT

---

STANDARD HEAD CURTAIN,  
FRONT-SEAT-MOUNTED  
THORAX SIDE AIR BAGS<sup>1</sup>

---

SIX STANDARD AIR BAGS<sup>1</sup>

---

.....

**STANDARD TIRE PRESSURE  
MONITORING SYSTEM**

Assesses tire pressure,  
alerting you in the Driver  
Information Center to  
a tire with low pressure.  
Does not monitor the  
spare tire.

---

**ENGINEERED FOR SAFETY**

---

The all-new Terrain was designed from the start to meet current safety standards and to incorporate the latest technologies to help protect your family. GMC safety engineering literally surrounds Terrain occupants, before, during and, thanks to OnStar, even after a crash.

The Terrain unibody structure incorporates a combination of high-strength and other advanced

steels, forming full-length frame rails and a safety cage in a single, welded unit. The structure is designed with front and rear crush zones engineered to collapse in a controlled manner to help absorb crash energy while helping protect the integrity of the occupant compartment. The safety cage incorporates welded tubular-section members that frame door openings and help support the

roof, and steel members in the doors. This combination of a single-piece door-aperture and door-beam reinforcements helps reduce side-impact intrusion. Within the cabin, energy-absorbing materials integrated into the interior trim at strategic locations provide protection for occupants in the event of a crash.



---

#### THE STATE OF THE ART IN AIR BAGS<sup>1</sup>

---

Terrain's driver and front-passenger air bags incorporate the latest dual-stage technology capable of low-level or high-level bag deployment depending on crash severity. A dedicated display located in the overhead console indicates the status of the passenger air bag. For side impacts, air bags mounted on the driver and front-passenger seat provide thorax protection of front-row occupants. Standard roof-rail-mounted head-curtain

air bags provide additional head protection of both front- and outboard second-row occupants. Advanced electronics come into play in the form of the Terrain's "roll-over" sensor. It continually measures the vehicle's status. When an impending roll-over is detected, the system will deploy the head-curtain side air bags and the vehicle's safety-belt pretensioners.

---

#### ONSTAR AUTOMATIC CRASH RESPONSE<sup>2</sup>

---

In a crash, built-in sensors around your vehicle can automatically send an alert to OnStar.<sup>2</sup> An OnStar Advisor is immediately connected to your vehicle to see if you need help. Even if you're unable to respond, the Advisor will use advanced GPS technology to pinpoint your exact location to direct emergency help—even in areas of limited cellular reception. The Advisor can also relay critical

crash information to emergency responders, such as severity and type of crash, so responders are better equipped to treat you at the scene. With Automatic Crash Response, you can get the help you need even if you can't ask for it.

---



<sup>1</sup>Air bag inflation can cause severe injury or death to anyone too close to the air bag when it deploys. Always use safety belts and the correct restraint for your child's age and size. Even in vehicles equipped with the Passenger Sensing System, children are safer when properly secured in a rear seat in the appropriate infant, child or booster seat. Never place a rear-facing infant restraint in the front seat of any vehicle equipped with a passenger air bag. See the Owner's Manual and child safety seat instructions for more safety information. <sup>2</sup>Call 1-888-4ONSTAR (466-7827) or visit [onstar.com](http://onstar.com) for details and system limitations. OnStar acts as a link to existing emergency service providers.

TERRAIN/STANDARD AND AVAILABLE FEATURES

TRIM LEVELS	SLE-1	SLE-2	SLT-1	SLT-2
<b>MECHANICAL</b>				
<b>DRIVETRAINS</b> Front-Wheel Drive (FWD)	S	S	S	S
All-Wheel Drive (AWD)	A	A	A	A
<b>ENGINES</b> 2.4L Direct Injection (DI) with Variable Valve Timing (VVT), 16-valve, 4-cylinder; 182 hp, 172 lb-ft of torque	S	S	S	S
3.0L V-6 DI with VVT; 264 hp, 222 lb-ft of torque	—	A	A	A
<b>TRANSMISSION</b> 6-speed automatic	S	S	S	S
<b>SUSPENSIONS</b> Front independent with strut type coil springs	S	S	S	S
Rear independent trailing arm with 3 lateral locating links, coil springs	S	S	S	S
Soft Ride	S	S	S	S
<b>STEERING</b> Power with variable electric assist	S	S	S	S
Power with variable hydraulic assist. Included with 3.0L V-6 VVT DI (LF1) engine.	—	A	A	A
<b>BRAKES</b> 4-wheel antilock, 4-wheel disc	S	S	S	S
<b>STABILITRAK</b> Vehicle stability enhancement system	S	S	S	S
<b>TRACTION CONTROL</b>	S	S	S	S
<b>ALTERNATORS</b> 120 amps	S	S	S	S
150 amps. Included with 3.0L V-6 VVT DI (LF1) engine.	—	A	A	A
<b>EXHAUST</b> Single	S	S	S	S
Dual with premium tips. Included with 3.0L V-6 VVT DI (LF1) engine.	—	A	A	A
<b>BATTERY</b> 525 cold-cranking amps with rundown protection. Included with ECOTEC 2.4L I-4 VVT DI (LAF) engine.	S	S	S	S
615 cold-cranking amps with rundown protection. Included with 3.0L V-6 VVT DI (LF1) engine.	—	A	A	A
<b>TRAILERING EQUIPMENT</b> 1500 lb. Requires ECOTEC 2.4L I-4 VVT DI (LAF) engine.	—	A	A	A
3500 lb. Requires 3.0L V-6 VVT DI (LF1) engine.	—	A	A	A
<b>SEATING</b>				
<b>SEATS</b> Trim cloth	S	—	—	—
Premium cloth	—	S	—	—
Ultrasoft perforated leather-appointed	—	—	S	S
Front buckets	S	S	S	S
60/40 split rear bench, 3-passenger with manual fore/aft adjustment and recline feature	S	S	S	S
Heated driver and front passenger seats. On SLE-2, requires Convenience Package.	—	A	S	S
Driver 2-way manual seat adjuster, fore/aft with power lumbar and 2-way power seat height (up/down)	S	—	—	—
Driver 8-way power seat adjuster with manual fore/aft and power lumbar	—	S	S	S
Memory settings for driver seat and outside rearview mirrors	—	—	—	S
<b>INSTRUMENTATION AND CONTROLS</b>				
<b>INSTRUMENTATION</b> Includes speedometer, single trip odometer, fuel level, engine temperature, tachometer and Driver Information Center	S	S	S	S
<b>REARVIEW CAMERA SYSTEM</b> Integrated into rearview mirror. When Touch-Screen Navigation <sup>1</sup> is ordered, camera image appears on NAV screen.	S	S	S	S

	SLE-1	SLE-2	SLT-1	SLT-2
<b>ULTRASONIC REAR PARKING ASSIST</b>	—	—	—	S
<b>STEERING WHEEL</b> Comfort-grip vinyl with integrated cruise controls	S	—	—	—
Leather-wrapped with mounted audio and cruise controls	—	S	S	S
Tilt and telescopic steering column	S	S	S	S
<b>CRUISE CONTROL</b>	S	S	S	S
<b>INTERIOR DETAILS</b>				
<b>ASSIST HANDLES</b> Front passenger and rear outboard	S	S	S	S
<b>LIGHTING</b> Theater dimming, center-mounted dome, rear cargo area, dual front map lights, ambient lighting on integrated center stack, door pull cups, center console area and center console cupholders	S	S	S	S
<b>MIRRORS</b> Inside rearview, auto-dimming. Includes rearview camera display.	S	S	S	S
<b>VISORS</b> Driver and front passenger with illuminated vanity mirrors	S	S	S	S
<b>CLIMATE CONTROL</b> Single-zone manual air conditioning with climate control	S	—	—	—
Single-zone automatic air conditioning with climate control	—	S	S	S
<b>DEFOGGER</b> Rear-window electric	S	S	S	S
<b>WINDOWS</b> Power with driver and front passenger express-down	S	S	S	S
<b>CONSOLE</b> Front center with armrest and concealed storage	S	S	S	S
<b>CUPHOLDERS</b> 2 front, 4 rear, including 2 in center armrest	S	S	S	S
<b>AUXILIARY POWER OUTLETS</b> 4 12-volt with covers	S	S	S	S
<b>SUNROOF</b> Power, tilt-sliding with express-open and wind deflector	—	A	A	S
<b>FLOOR MATS</b> Carpeted front and rear	S	S	S	S
<b>ENTERTAINMENT/COMMUNICATION/NAVIGATION</b>				
<b>AM/FM STEREO</b> With CD player and MP3/Windows Media Audio (WMA) playback capability, Graphic Interface Display (GID), Radio Data System (RDS), <sup>2</sup> auxiliary input jack, speed-compensated volume, USB port and outside temperature display	S	S	S	S
With CD/DVD player, MP3/WMA playback capability, GID, RDS, <sup>2</sup> speed-compensated volume, DVD audio and video playback capability with 8-speaker Pioneer® premium sound system and USB port. Requires Rear-Seat Entertainment System.	—	A	A	A
<b>TOUCH-SCREEN NAVIGATION<sup>1</sup> AM/FM STEREO</b> Includes CD player with MP3/WMA playback capability, 7" touch-screen Color Interface Display (CID), enhanced DVD-based navigation with voice recognition, 40GB hard drive, USB port, RDS, <sup>2</sup> speed-compensated volume and 8-speaker Pioneer premium sound system	—	A	A	A
<b>AUDIO</b> 6-speaker system	S	—	—	—
Pioneer premium 8-speaker system with subwoofer and amplifier	—	S	S	S
<b>REAR-SEAT ENTERTAINMENT SYSTEM</b> Includes dual seatback display, remote control, auxiliary jack and 2 wireless headsets	—	A	A	A
<b>XM RADIO<sup>3</sup></b> Includes 3 trial months of service and Quad-Band antenna (see page 24 for details)	S	S	S	S
S _ STANDARD    A _ AVAILABLE    — _ NOT AVAILABLE				

TRIM LEVELS	SLE-1	SLE-2	SLT-1	SLT-2
<b>XM NAVTRAFFIC</b> <sup>4</sup> Including 3 trial months of service and only available with Touch-Screen Navigation System (see page 24 for details)	—	A	A	A
<b>BLUETOOTH</b> <sup>5</sup> For phone, personal cell phone connectivity to vehicle audio system and Human Machine Interface (HMI)	—	S	S	S
<b>ONSTAR</b> Safe & Sound plan. <sup>6</sup> One-year subscription (see page 24 for details).	S	S	S	S
Directions & Connections plan. <sup>6</sup> One-year subscription (see page 24 for details).	A	A	A	A

#### CONVENIENCE FEATURES

<b>REMOTE KEYLESS ENTRY</b>	S	S	S	S
<b>REMOTE VEHICLE START</b> Includes extended-range Remote Keyless Entry. On SLE-2, requires Convenience Package.	—	A	S	S
<b>CONVENIENCE PACKAGE</b> Includes remote start and heated driver and front-passenger cloth seats	—	A	—	—
<b>CARGO MANAGEMENT PACKAGE</b> Includes rear cargo cover, cargo convenience net and luggage crossbars	—	A	A	A

#### EXTERIOR STYLING AND FUNCTIONALITY

<b>LAMPS</b> Halogen projector lamp headlamps	S	S	S	S
Daytime running lamps	S	S	S	S
Front halogen fog lamps	S	S	S	S
<b>WIPERS</b> Front and rear intermittent with washers	S	S	S	S
<b>DOOR HANDLES</b> Body-color	S	S	S	—
Bright chrome	—	—	—	S
<b>FRONT AND REAR BUMPERS</b> Body-color	S	S	S	—
Body-color with chrome rear skid plates	—	—	—	S
<b>GRILLE</b> Charcoal with chrome surround	S	S	S	—
Chrome	—	—	—	S
<b>CHROME EXTERIOR APPEARANCE PACKAGE</b> Includes chrome door handles, luggage rail inserts, grille, mirrors and body-color bumpers with chrome rear skid plates	—	—	—	S
<b>GLASS</b> Solar-Ray deep-tinted. All windows except light-tinted glass on windshield and driver- and front-passenger side.	S	S	S	S
<b>OUTSIDE MIRRORS</b> Heated, power-adjustable, manual-folding, body-color	S	S	S	—
Heated, power-adjustable, manual-folding, chrome	—	—	—	S
<b>LIFTGATE</b> Manual with fixed glass	S	S	S	—
Power programmable with fixed glass	—	—	A	S
<b>LUGGAGE FEATURES</b> Rails, Charcoal	—	S	S	—
Rails, chrome	—	—	—	S
<b>CROSSBARS</b> Requires Cargo Management Package	—	A	A	A
<b>SPARE</b> Tire and wheel	S	S	S	S

#### SAFETY AND SECURITY

<b>SAFETY BELTS</b> 3-point, all seating positions	S	S	S	S
<b>AIR BAGS</b> <sup>7</sup> Dual-stage front and side-impact, driver and right-front passenger with Passenger Sensing System plus head curtain side-impact, front and rear outboard seating positions	S	S	S	S

	SLE-1	SLE-2	SLT-1	SLT-2
<b>LATCH</b> (Lower Anchors and Top tethers for CHildren) system	S	S	S	S
<b>POWER DOOR LOCKS</b> Programmable with lockout protection	S	S	S	S
<b>THEFT-DETERRENT SYSTEM</b> Includes PASS-Key III	S	S	S	S
<b>TIRE PRESSURE MONITORING SYSTEM</b> Does not monitor spare tire	S	S	S	S

#### STANDARD TECHNICAL DATA

<b>FUEL TANK CAPACITY</b>	
<b>2.4L I-4 VVT DI</b> 18.8 gallons (approx.)	<b>3.0L V-6 VVT DI</b> 20.9 gallons (approx.)
<b>EPA-ESTIMATED MILEAGE 2.4L I-4 VVT DI</b>	<b>3.0L V-6 VVT DI</b>
<b>FWD</b> 22 city/32 highway	<b>FWD</b> 17 city/25 highway
<b>AWD</b> 20 city/29 highway	<b>AWD</b> 17 city/24 highway
<b>TRAILERING DATA (LBS)</b>	<b>GROSS VEHICLE WEIGHT RATING<sup>9</sup> (GVWR) (LBS)</b>
<b>MAXIMUM TRAILER WEIGHT</b> 3500 <sup>8</sup>	<b>2.4L I-4 VVT DI</b>
<b>EXTERIOR DIMENSIONS (IN)</b>	<b>FWD</b> 4960
<b>OVERALL HEIGHT</b> 66.3 without luggage rack	<b>AWD</b> 5071
<b>OVERALL WIDTH</b> 72.8	<b>3.0L V-6 VVT DI</b>
<b>OVERALL LENGTH</b> 185.3	<b>AWD</b> 5203
<b>WHEELBASE</b> 112.5	<b>FWD</b> 5300
<b>INTERIOR DIMENSIONS (IN)</b>	
<b>HEAD ROOM</b> Front 39.8/Rear 39.2	
<b>LEG ROOM</b> Front 41.2/Rear (max) 39.9	
<b>SHOULDER ROOM</b> Front 55.7/Rear 55.3	
<b>HIP ROOM</b> Front 55.1/Rear 51.3	
<b>EPA PASSENGER VOLUME</b> 99.6 cu. ft.	
<b>EPA INTERIOR VOLUME</b> 130.7 cu. ft.	
<b>CARGO AREA DIMENSIONS (CU. FT.)<sup>10</sup></b>	
<b>BEHIND 1ST ROW</b>	63.9
<b>BEHIND 2ND ROW</b>	31.6

<sup>1</sup>Map coverage for Puerto Rico and the Virgin Islands available on separate disc. Coverage not available for portions of Canada.

<sup>2</sup>RDS functions only where stations broadcast RDS information.

<sup>3</sup>XM Radio requires a subscription, sold separately by XM after the first 90 days. XM Radio U.S. service only available in the 48 contiguous United States and the District of Columbia. For more information, visit gm.xmradio.com.

<sup>4</sup>Required XM Radio and XM NavTraffic monthly subscriptions sold separately by XM after trial period. XM NavTraffic only available in select markets. For more information, visit xmradio.com/navtraffic.

<sup>5</sup>Go to gm.com/bluetooth to find out which Bluetooth phones are compatible with the vehicle.

<sup>6</sup>Visit onstar.com or call 1-888-4ONSTAR (466-7827) for details and system limitations.

<sup>7</sup>Always use safety belts and the correct restraint for your child's age and size. Even in vehicles equipped with the Passenger Sensing System, children are safer when properly secured in a rear seat in the appropriate infant, child or booster seat. Never place a rear-facing infant restraint in the front seat of any vehicle equipped with a passenger air bag. See the Owner's Manual and child safety seat instructions for more safety information.

<sup>8</sup>Maximum trailer weight ratings are calculated assuming base vehicle, except for any options necessary to achieve the rating, plus driver. The weight of optional equipment, passengers, cargo and required trailering equipment will reduce the maximum trailer weight your vehicle can tow. See your dealer for details.

<sup>9</sup>When properly equipped; includes weight of vehicle, passengers, cargo and equipment.

<sup>10</sup>Cargo and load capacity limited by weight and distribution.



**GMC**  
ACCESSORIES



**GET PERSONAL.**

Make Terrain your very own with available accessories created specifically to match its distinctive style, as well as yours. All of these items have been tested to meet GMC's original equipment standards for performance and appearance. Their cost can be applied to your purchase, installed by your GMC dealer and covered under GM's New-Vehicle Limited Warranty.<sup>1</sup> Just ask your dealer.

**1**  
**MOLDED SPLASH GUARDS**  
Custom-molded splash guards fit directly behind the wheels. Rear guards feature the GMC logo.

**2**  
**PREMIUM ALL-WEATHER FLOOR MATS**  
These precision-designed mats fit the floor exactly. Their deep-ribbed pattern collects rain, mud, snow and other debris for easy cleaning. Nibs on the back help keep them in place. Available in Ebony with an embossed GMC logo on front mats only.

**3**  
**ROOF RACK CROSS RAIL PACKAGE**  
Carry a load on the roof of your Terrain with these roof-mounted luggage cross rails that add both function and style and can accommodate up to 200 lbs.<sup>2</sup>

**CHROME MIRROR COVER**  
Custom styling begins with these chrome outside rearview mirrors.

**CHROME DOOR HANDLES**  
These chrome door handles give your Terrain a stylish and personalized look.

**4**  
**HITCH TRAILERING PACKAGE**  
This Hitch Trailering Package comes with a hitch assembly that mounts directly to your vehicle. Includes the trailering harness plus a ball-mount assembly with ball mount, retainer pin, clip and all fuses and relays necessary for a complete installation.

**ACCESSORY WHEEL<sup>3</sup>**



**LF671 19" CAST CHROME WHEEL**  
SIX-SPOKE CAST-CHROME WHEEL WITH A LUSTROUS FINISH.

<sup>1</sup>GM Accessories permanently installed at the time of new-vehicle delivery are covered under the New-Vehicle Limited Warranty. If installed after delivery, coverage (parts and labor) is for the balance of the new-vehicle warranty or a minimum of 12 months/12,000 miles, whichever comes first. GM Accessories not requiring installation or purchased over the counter carry a 12-month limited warranty (parts only). Does not apply to licensed products. <sup>2</sup>Cargo and load capacity limited by weight and distribution. <sup>3</sup>Use only GM-approved tire and wheel combinations. Unapproved combinations may change the vehicle's performance characteristics. For approved tire and wheel combinations and other important information, go to gmaccessorieszone.com or see your dealer for details. <sup>4</sup>Map coverage for Puerto Rico and the Virgin Islands available on separate disc. Coverage not available for portions of Canada.



AVAILABLE ON ALL MODELS



ATLANTIC BLUE METALLIC



CARBON BLACK METALLIC EXTRA-COST COLOR



CYBER GRAY METALLIC



GOLD MIST METALLIC



MOCHA STEEL METALLIC



MERLOT JEWEL METALLIC



ONYX BLACK



QUICKSILVER METALLIC



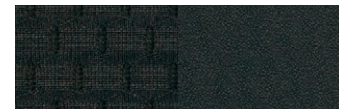
SUMMIT WHITE

INTERIOR TRIM

CLOTH



LIGHT TITANIUM

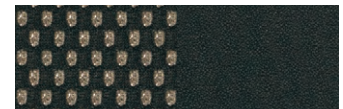


JET BLACK

PREMIUM CLOTH

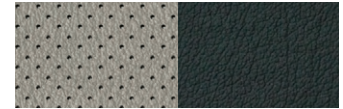


LIGHT TITANIUM



JET BLACK

PERFORATED LEATHER-APPOINTED



LIGHT TITANIUM



BROWNSTONE



JET BLACK

AVAILABLE TOUCH-SCREEN NAVIGATION



ANOTHER COMMANDING VIEW

Essentially an on-board computer, Terrain's available Touch-Screen Navigation System<sup>4</sup> allows you to choose either a 2-D or 3-D view of your driving (above, left). The system's 40GB hard drive stores a navigation database, freeing the system's DVD drive for entertainment. On vehicles equipped with this system, Terrain's standard rearview camera transmits the camera image of what is behind the vehicle to the NAV screen (above, right).

TERRAIN WHEELS<sup>5</sup>



PFF

- ▣ 17"
- ▣ PAINTED ALUMINUM
- ▣ STANDARD: SLE-1 AND SLE-2



Q6D

- ▣ 18"
- ▣ BRIGHT MACHINED ALUMINUM
- ▣ STANDARD: SLT-1 AND SLT-2
- ▣ AVAILABLE: SLE-2



R3P

- ▣ 19"
- ▣ CHROME CLAD ALUMINUM
- ▣ AVAILABLE: SLE-2, SLT-1 AND SLT-2 WITH V-6 ENGINE



**ONSTAR**

OnStar is a core asset of your Terrain. Benefiting from more than a decade of innovative development, it is both a highly advanced technology—fully integrated within the vehicle—and a warm human service. Standard on every Terrain is one year of the OnStar Safe & Sound plan, including the convenience and safety of Hands-Free Calling.<sup>1</sup> It also includes Automatic Crash Response (see page 19), Stolen Vehicle Assistance,<sup>2</sup> link to Emergency Services, Roadside Assistance, Remote Door Unlock,<sup>2</sup> OnStar Vehicle Diagnostics, Crisis Assist and Remote Horn and Lights. OnStar services require vehicle electrical system (including battery), wireless service and GPS satellite signals to be available and operating for features to function properly. OnStar acts as a link to existing emergency service providers. Subscription Service Agreement required. Call 1-888-4ONSTAR (466-7827) or visit [onstar.com](http://onstar.com) for OnStar's Terms and Conditions, Privacy Policy, details and system limitations.

**ONSTAR HANDS-FREE CALLING**

OnStar Hands-Free Calling<sup>1</sup> capability is built into your Terrain. It's there when your cell phone is unavailable, its battery is low, you can't reach it easily or you left it home or in the office. Your Hands-Free Calling system is the right choice whenever you need an easy way to make and receive calls—at the touch of the phone icon button on the rearview mirror or the steering-wheel-mounted controls shown on page 11 (not available on SLE-1 models). Voice-activated dialing is convenient because you don't have to dial when you are at the wheel. And Hands-Free Calling is reliable because it's specially designed for better reception and fewer dropped calls in areas of limited cellular reception. You are invited to experience the benefits yourself with 30 Hands-Free Calling minutes—on OnStar—during the first two months you drive your Terrain, with no strings attached.

**ONSTAR TURN-BY-TURN NAVIGATION**

The available OnStar Directions & Connections plan adds innovative, easy-to-use Turn-by-Turn Navigation<sup>3</sup> plus Information and Convenience Services and Driving Directions. With Turn-by-Turn Navigation, you simply tell the OnStar

Advisor your intended destination, and directions will automatically be sent to your Terrain. An automated voice then guides you turn-by-turn until you arrive at your destination. Turn-by-Turn Navigation is further enhanced with eNAV,<sup>3</sup> allowing you to send MapQuest® directions directly to your vehicle. Real-time traffic alerts are also available through the OnStar Virtual Advisor in select cities.



**XM RADIO**

XM Radio<sup>4</sup> is standard with 3 trial months of service. XM turns your drive on with commercial-free music channels from virtually every genre, artist-dedicated channels, live performances and more. Tune in to live play-by-play from the biggest sports, exclusive entertainment from top personalities, compelling talk, hilarious comedy, world-class news, local traffic and weather and family-friendly programming. Everything worth listening to is now on XM. Visit [gm.xradio.com](http://gm.xradio.com) for details.



**XM NAVTRAFFIC**

Included with the Touch-Screen Navigation System, 3 months of XM NavTraffic<sup>5</sup> enhances your vehicle's GPS navigation system by showing real-time traffic data when it's needed most—while you're driving. Available in over 80 markets, XM NavTraffic displays construction, road closures and accidents so that you can get to your destination faster. Average traffic speed and estimated drive time are also available in select markets. For more information, visit [xmradio.com/navtraffic](http://xmradio.com/navtraffic).

<sup>1</sup>OnStar Hands-Free Calling requires a Hands-Free Calling-enabled vehicle, existing OnStar service contract and prepaid minutes. Not available in certain markets. Calls may be made to the U.S. and Canada only.  
<sup>2</sup>Ability to locate stolen vehicles and Remote Door Unlock success vary with conditions.  
<sup>3</sup>Requires Directions & Connections plan. Not available in certain areas. Visit [onstar.com](http://onstar.com) for coverage map.  
<sup>4</sup>XM Radio requires a subscription, sold separately by XM after the first 90 days. XM Radio U.S. service only available in the 48 contiguous United States and the District of Columbia. For more information, visit [gm.xradio.com](http://gm.xradio.com).  
<sup>5</sup>Required XM Radio and NavTraffic monthly subscriptions sold separately by XM after trial period. XM NavTraffic only available in select markets. For more information, visit [xmradio.com/navtraffic](http://xmradio.com/navtraffic).



**COMMITMENT PLUS**

From the owner orientation and full tank of gas you receive when you take possession of your Terrain to the **24-Hour Roadside Assistance, Courtesy Transportation and Travel Benefits**, Commitment Plus is a portfolio of owner privileges that lasts throughout your warranty. For expert product information, Roadside Assistance or other services, call 1-800-GMC-8782.

**TRAVEL BENEFITS AND ROADSIDE ASSISTANCE** Available around the clock: trip routing service, a program for reimbursement for trip interruption due to necessary warranty repairs, towing, flat tire change, jump-starts and more for 5 years or 100,000 miles (whichever comes first).

**COURTESY TRANSPORTATION** Available at participating dealers: shuttle service, reimbursement of certain public transportation or fuel expenses for overnight warranty repairs, and courtesy rental for overnight work repairs. See your dealer for details.

**GMC OWNER CENTER** A complimentary, one-stop resource to enhance your GMC ownership experience. It's easy to sign up. Just go to [gm.com/gmownercenter/gmc](http://gm.com/gmownercenter/gmc).

**BEST COVERAGE IN AMERICA** Terrain offers the best coverage in America. That means you get all the benefits of Commitment Plus, including Roadside Assistance and Courtesy Transportation. In addition, you get a new level of confidence with GM's 5-Year/100,000-Mile Transferable Powertrain Limited Warranty, whichever comes first. See dealer for limited warranty details.

**GMC | Goodwrench** **GOODWRENCH SERVICE** To help your Terrain live up to its performance promise, GMC Goodwrench Service—found exclusively at your GMC dealer—is there. With all the engineering excellence in Terrain, GM-trained Goodwrench technicians have the expertise to care for all of it.

**A NOTE ON CHILD SAFETY** Always use safety belts and the correct restraint for your child's age and size. Even in vehicles equipped with the Passenger Sensing System, children are safer when properly secured in a rear seat in the appropriate infant, child or booster seat. Never place a rear-facing infant restraint in the front seat of any vehicle equipped with a passenger air bag. See the Owner's Manual and child safety seat instructions for more safety information.

**TRAILERING WITH YOUR TERRAIN** Please carefully review the Owner's Manual for important safety information about trailering with your vehicle.

**IMPORTANT WORDS ABOUT THIS CATALOG** We have tried to make this catalog comprehensive and factual. We reserve the right, however, to make changes at any time, without notice, in prices, colors, materials, equipment, specifications, models and availability. Specifications, dimensions, measurements, ratings and other numbers in this catalog and other printed materials provided at the dealership or affixed to vehicles are approximates based upon design and engineering drawings and prototypes and laboratory tests. Your vehicle may differ due to variations in manufacture and equipment. Since some information may have been updated since the time of printing, please check with your GMC dealer for complete details. GMC reserves the right to lengthen or shorten the model year for any product for any reason, or to start and end model years at different times.

**GMC.COM** See more of Terrain on our Web site: [gmc.com/terrain](http://gmc.com/terrain). More photos and information; hot links to related subjects; convenient dealer locator; pricing guide, spec out your own vehicle. Or call 1-800-GMC-8782.

**AN IMPORTANT NOTE ABOUT ALTERATIONS AND WARRANTIES** Installations or alterations to the original equipment vehicle (or chassis) as distributed by General Motors are not covered by the General Motors New-Vehicle Limited Warranty. The special body company, assembler, equipment installer or upfitter is solely responsible for warranties on the body or equipment and any alterations (or any effect of the alterations) to any of the parts, components, systems or assemblies installed by GM. General Motors is not responsible for the safety or quality of design features, materials, or workmanship of any alterations by such suppliers.

**NEW-VEHICLE LIMITED WARRANTY** All GMC light-duty vehicles come with a fully transferable, no-deductible 5-year/100,000-mile (whichever comes first) Powertrain Limited Warranty. GM vehicles registered in the U.S.A. are also covered for 3 years or 36,000 miles (whichever comes first). Coverage includes tires and towing to your nearest GMC dealership. Repairs will be made to correct any vehicle defect and most warranty repairs will be made at no charge. In addition, rust-through corrosion will be covered for 6 years or 100,000 miles (whichever comes first). See dealer for details.

**ENGINES** GMC products are equipped with engines produced by GM Powertrain or other suppliers to GM worldwide. The engines in GMC products may also be used in other GM makes and models.

**ASSEMBLY** GMC vehicles and their components are assembled or produced by different operating units of General Motors, its subsidiaries or suppliers to GM worldwide. We sometimes find it necessary to produce GMC vehicles with different or differently sourced components than originally scheduled. Since some options may be unavailable when your vehicle is assembled, we suggest that you verify that your vehicle includes the equipment you ordered or, if there are changes, that they are acceptable to you.

**GMMOBILITY.COM** (1-800-323-9935) GM Mobility offers financial assistance for eligible adaptive equipment to make automotive travel easier for persons with disabilities or special transportation needs. To learn more about special GM Mobility offers, visit [gmmobility.com](http://gmmobility.com).

**GMCARDMEMBERSERVICES.COM** Did you know about the family of reward credit cards that can help you get a great deal on a new GM car, light-duty truck, SUV or crossover? With a GM reward card, you accrue earnings on every credit card purchase to use toward the purchase or lease of an eligible new GM vehicle. With three cards to choose from, you're sure to find one that suits you.

©2009 General Motors. All rights reserved. GM, the GM logo, GMC, the GMC logo, the slogans, emblems, vehicle model names, vehicle body designs and other marks appearing in this catalog are the trademarks and/or service marks of General Motors, its subsidiaries, affiliates or licensors. iPod is a registered trademark of Apple, Inc.



WE ENGINEER PRACTICAL WISDOM AND REMARKABLE CAPABILITY INTO EVERYTHING WE DO—FROM OUR RENOWNED LINE OF SIERRA PICKUPS AND THE ACADIA, OUR PREMIUM MIDSIZE CROSSOVER, TO OUR FAMILY OF FULL-SIZE HYBRID SUVs AND PICKUPS NO COMPETITOR CAN OFFER: SIERRA HYBRID, YUKON HYBRID AND YUKON DENALI HYBRID.

ADD OUR POWERFUL AND FUEL-EFFICIENT<sup>1</sup> ENGINES, COMPREHENSIVE SAFETY FEATURES AND THOUGHTFUL INNOVATIONS, AND YOU GET A COMBINATION OF PERFORMANCE, TECHNOLOGY AND CONVENIENCE YOU MIGHT NOT EXPECT IN ANY SINGLE VEHICLE. ADD TO THAT THE NEWEST ADDITION TO OUR LINEUP, THE GMC TERRAIN, AND YOU GET A SMALL CROSSOVER WITH THE STYLE AND FUNCTIONALITY OF AN SUV WITH A BEST-IN-CLASS 32 EPA-ESTIMATED HIGHWAY MPG.<sup>2</sup>

THAT'S WHAT HAPPENS WHEN YOUR ENGINEERS NEVER SAY NEVER. THAT'S GMC. WE ARE PROFESSIONAL GRADE.



**GMC.COM**

10 GMC TER RC-25 Litho in U.S.A.

<sup>1</sup>EPA-estimated mileage: Acadia FWD 17 city/24 hwy.; Sierra Hybrid 21 city/22 hwy.; Yukon Hybrid 2WD 21 city/22 hwy.; Yukon Denali Hybrid 2WD 21 city/22 hwy.

<sup>2</sup>Based on Terrain FWD with 2.4L I-4 DI engine and 2009 GM Compact SUV-Crossover segment. Excludes other GM vehicles.