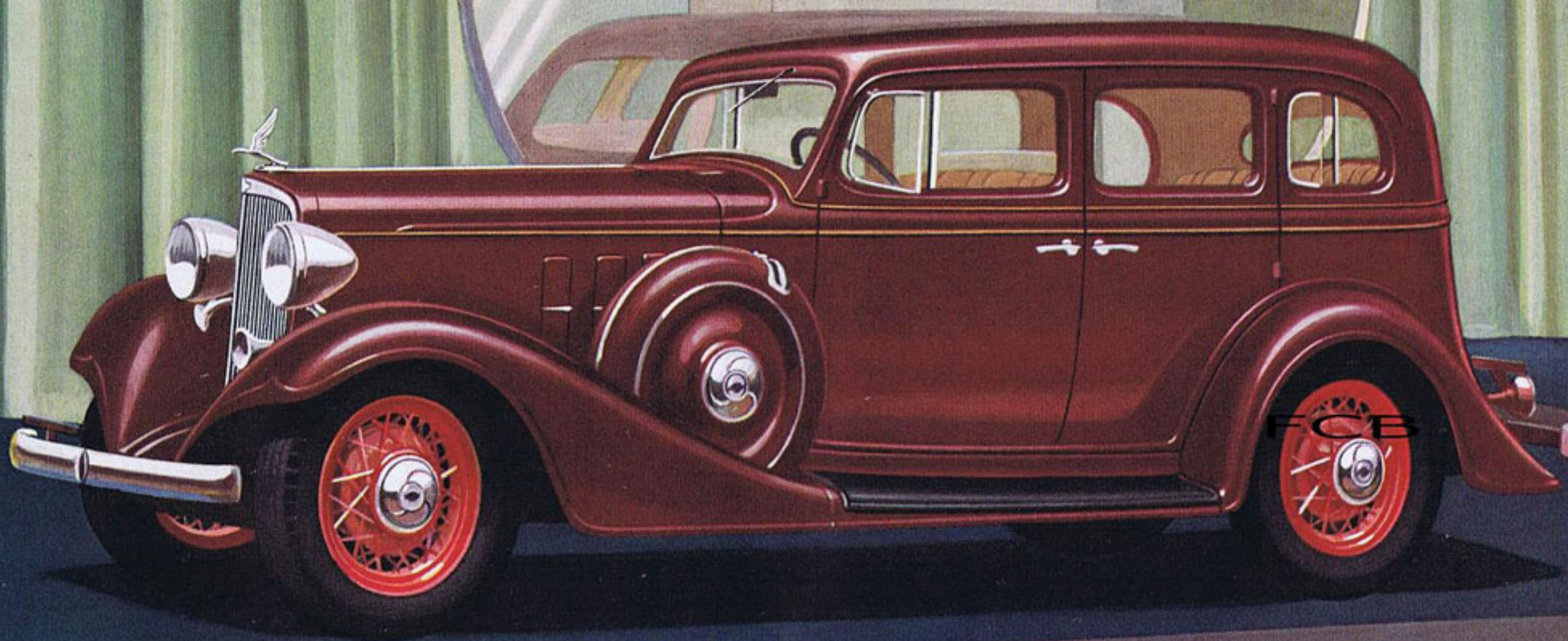


NEW  
CHEVROLET  
SIX



A GENERAL MOTORS VALUE

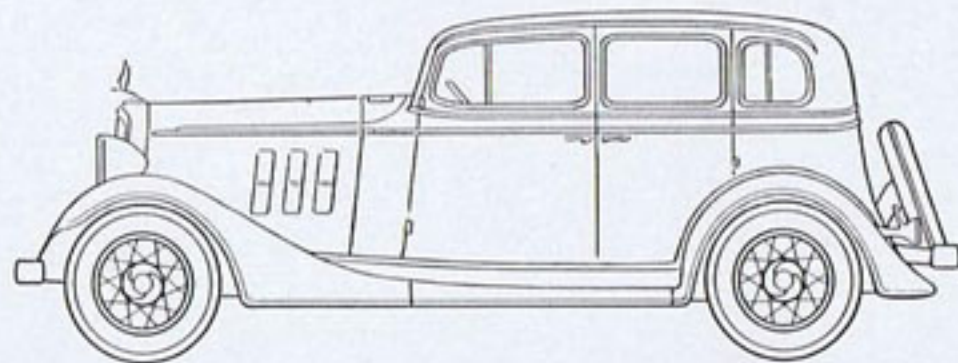




THE LEADER CAN ACCOMPLISH  WHAT OTHERS DARE NOT TRY

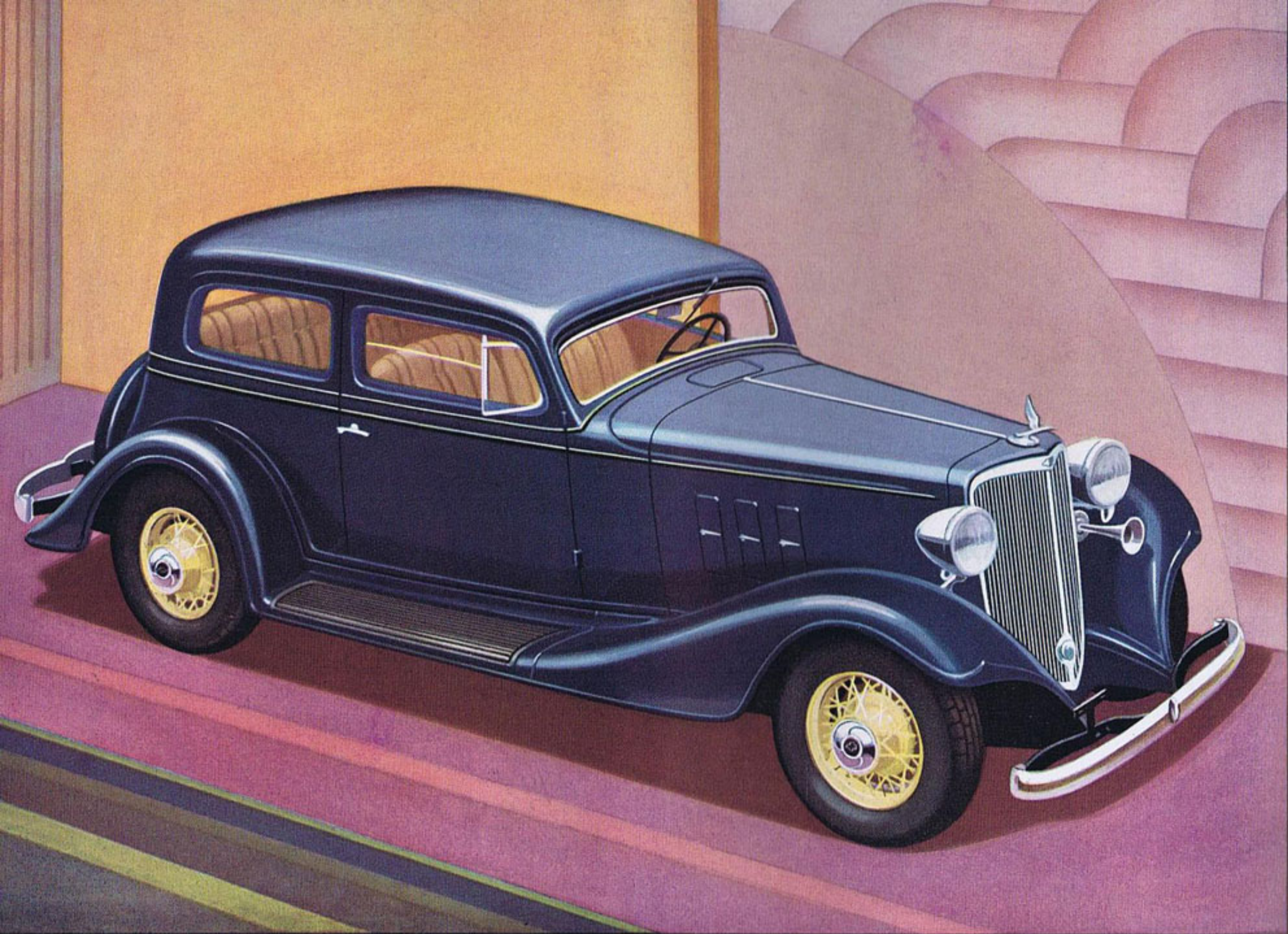
*The*  
**CHEVROLET**  
**MASTER SIX**  
*Sedan*

● Luxury is the keynote in this big, roomy, and strikingly beautiful model. Has inside sun deflector, adjustable front seat, walnut-finish robe rail and garnish molding. Rear seat has dome light with pillar switch, two assist straps, two smoking cases, arm rests, carpet-covered foot rest. There are seven windows, with ventilators on front and rear quarter windows. Deep, tailored seats upholstered in mohair or Bedford cord.



Standard equipment on the sedan includes five wire wheels. Six wire wheels and fender wells are available at slight extra cost.

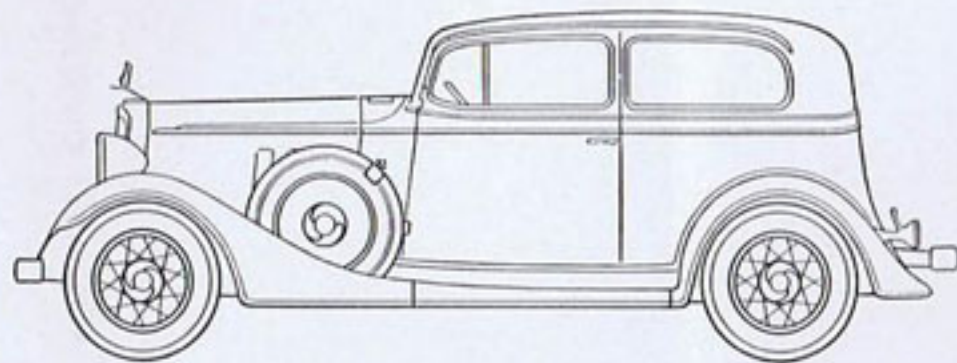




THE LEADER CAN ACCOMPLISH  WHAT OTHERS DARE NOT TRY

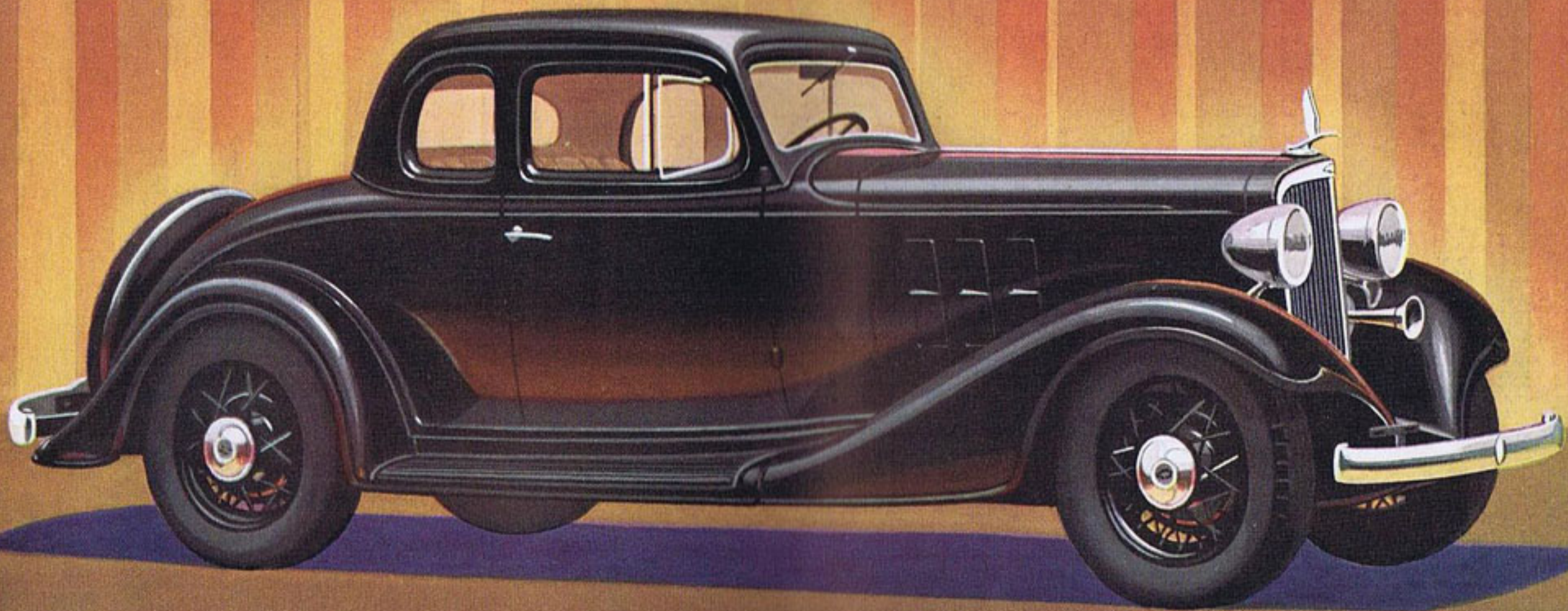
*The*  
**CHEVROLET**  
MASTER SIX  
*Coach*

● A car so handsome, so roomy, and so comfortable that it is bound to make the practical coach model even more popular. Smart incidentals include back window curtain, dome light with pillar switch, adjustable sun deflector, assist strap and arm rests in rear seat, new button door locks. New comfort features include front door ventilators and new bucket-type front seats. Your choice of rich mohair or Bedford cord upholstery.



Standard equipment on the coach includes five wire wheels. Six wire wheels and fender wells are available at slight extra cost.

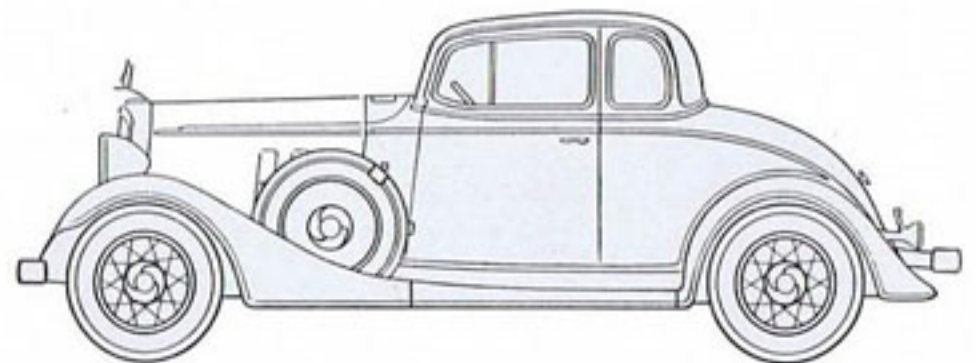




THE LEADER CAN ACCOMPLISH  WHAT OTHERS DARE NOT TRY

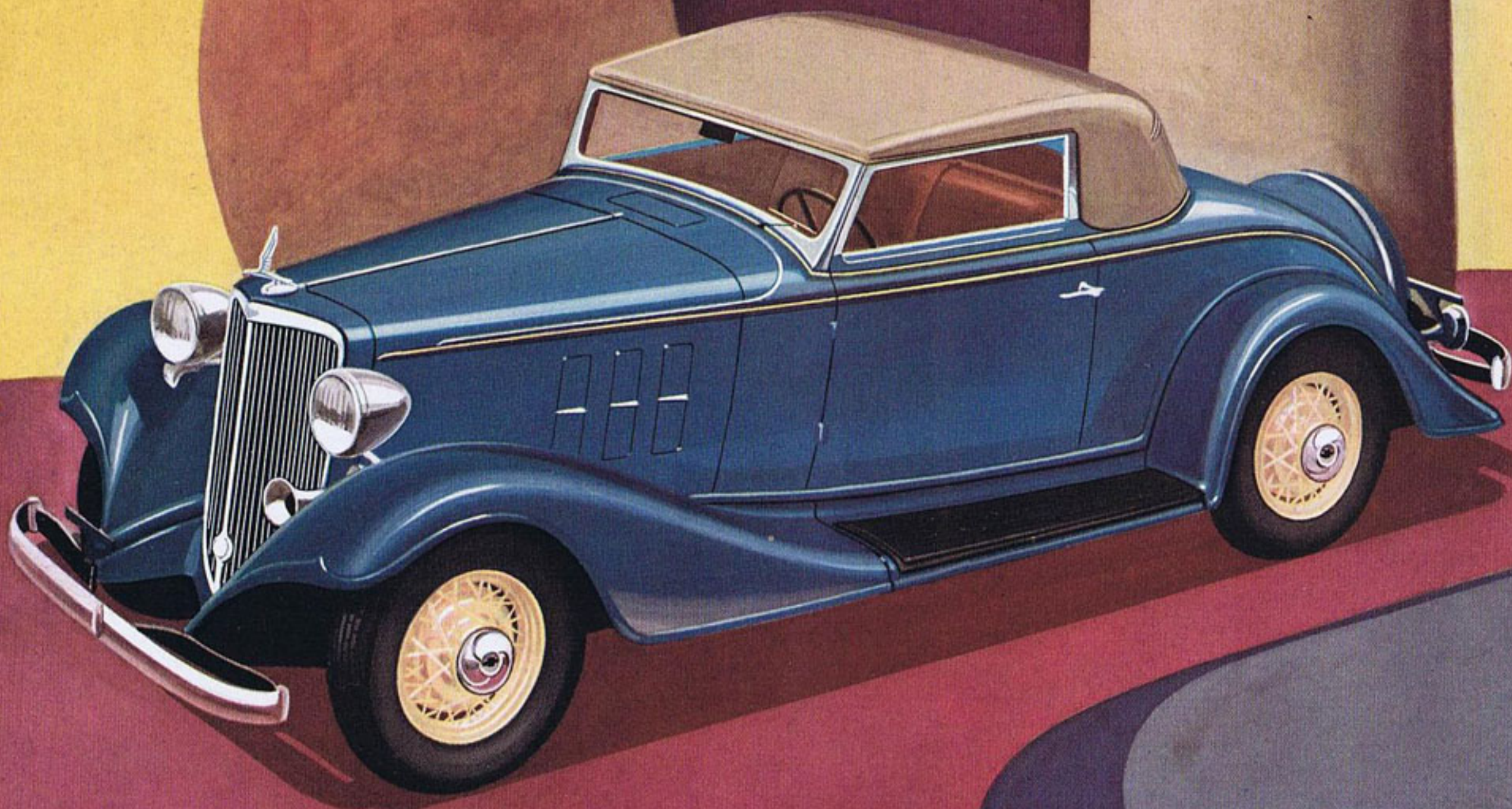
*The*  
**CHEVROLET**  
 MASTER SIX  
*Coupe*

● As smart a model of this swagger body style as you will see anywhere. Equipped with rear window curtain, dome light with pillar switch, inside sun deflector, airplane-type instrument panel, button door locks, ventilators on doors, rubber floor mat, walnut-finish garnish molding, chrome-plated handles on hood ports, a roomy luggage compartment, new draft-proof doors. Upholstered, as you prefer, in rich mohair or Bedford cord.



Standard equipment on the coupe includes five wire wheels. Six wire wheels and fender wells are available at slight extra cost.

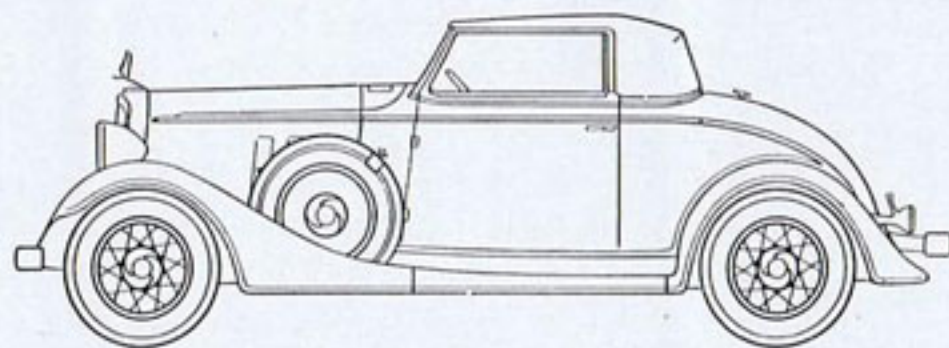




THE LEADER CAN ACCOMPLISH  WHAT OTHERS DARE NOT TRY

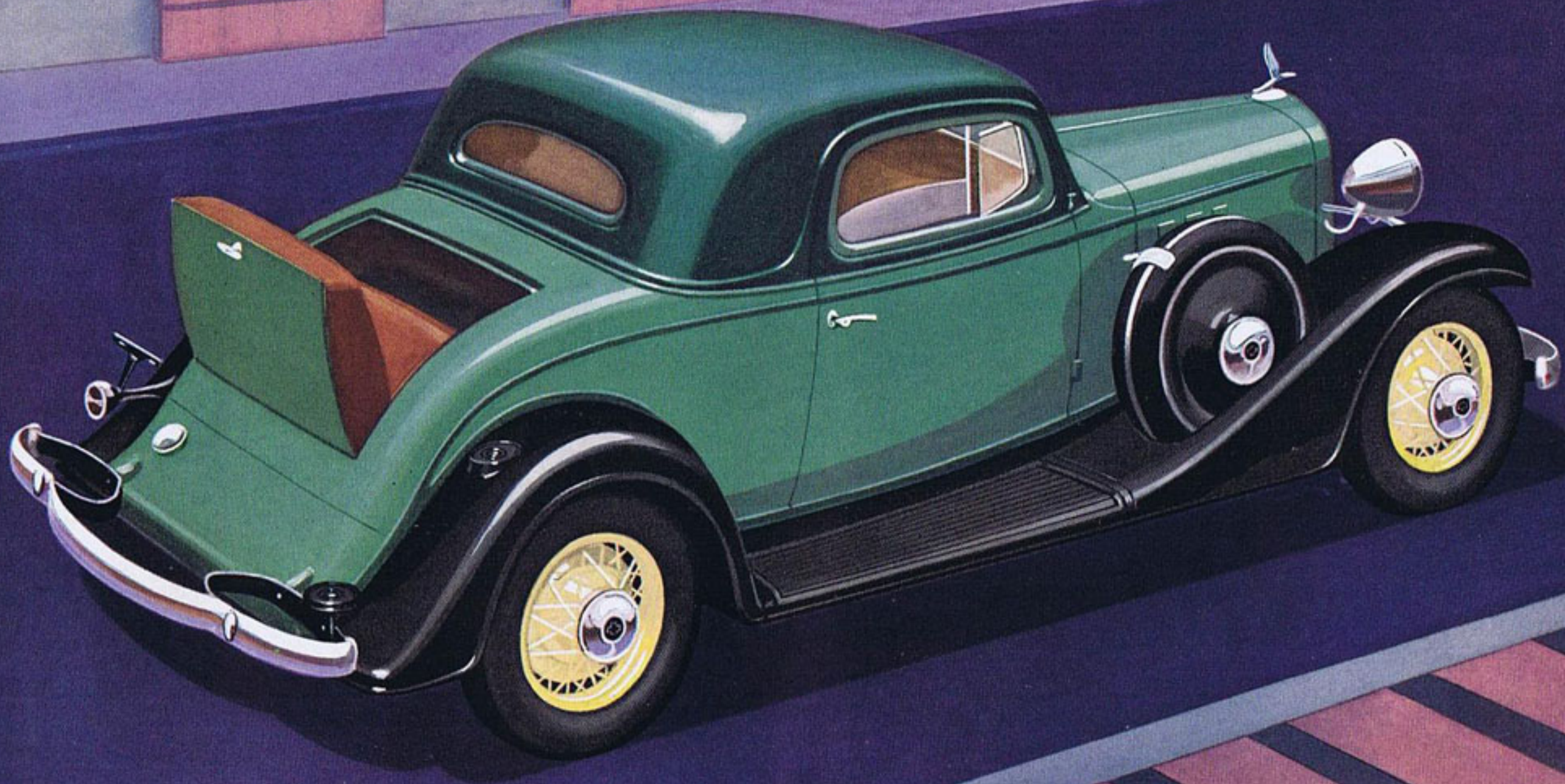
*The*  
**CHEVROLET**  
**MASTER SIX**  
*Cabriolet*

- Instantly convertible from a weathertight coupe to a sunny open roadster. Chrome-plated handles on slanted hood ports. Adjustable cowl ventilator. Convenient ash tray. Big side pocket. Colored top with new interior braces folds quickly into neat top-boot. Roomy rumble seat. Rear window set in rubber frame. Airplane-type instrument panel. New draft-proof doors. The deep, wide seat is upholstered in genuine leather or Bedford cord.



Standard equipment on the cabriolet includes five wire wheels. Six wire wheels and fender wells are available at slight extra cost.

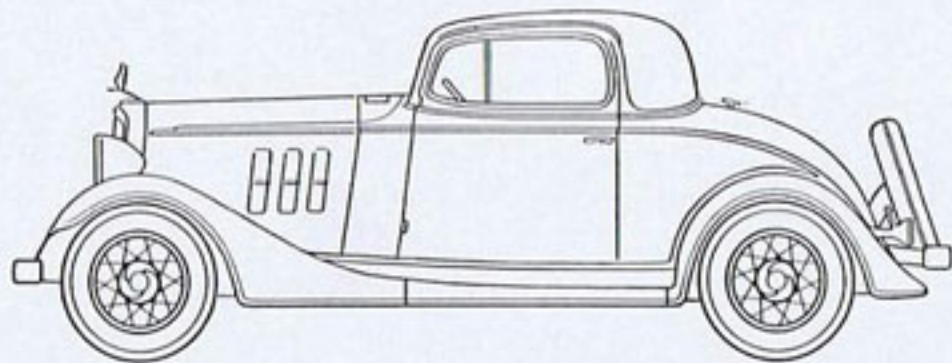




THE LEADER CAN ACCOMPLISH  WHAT OTHERS DARE NOT TRY

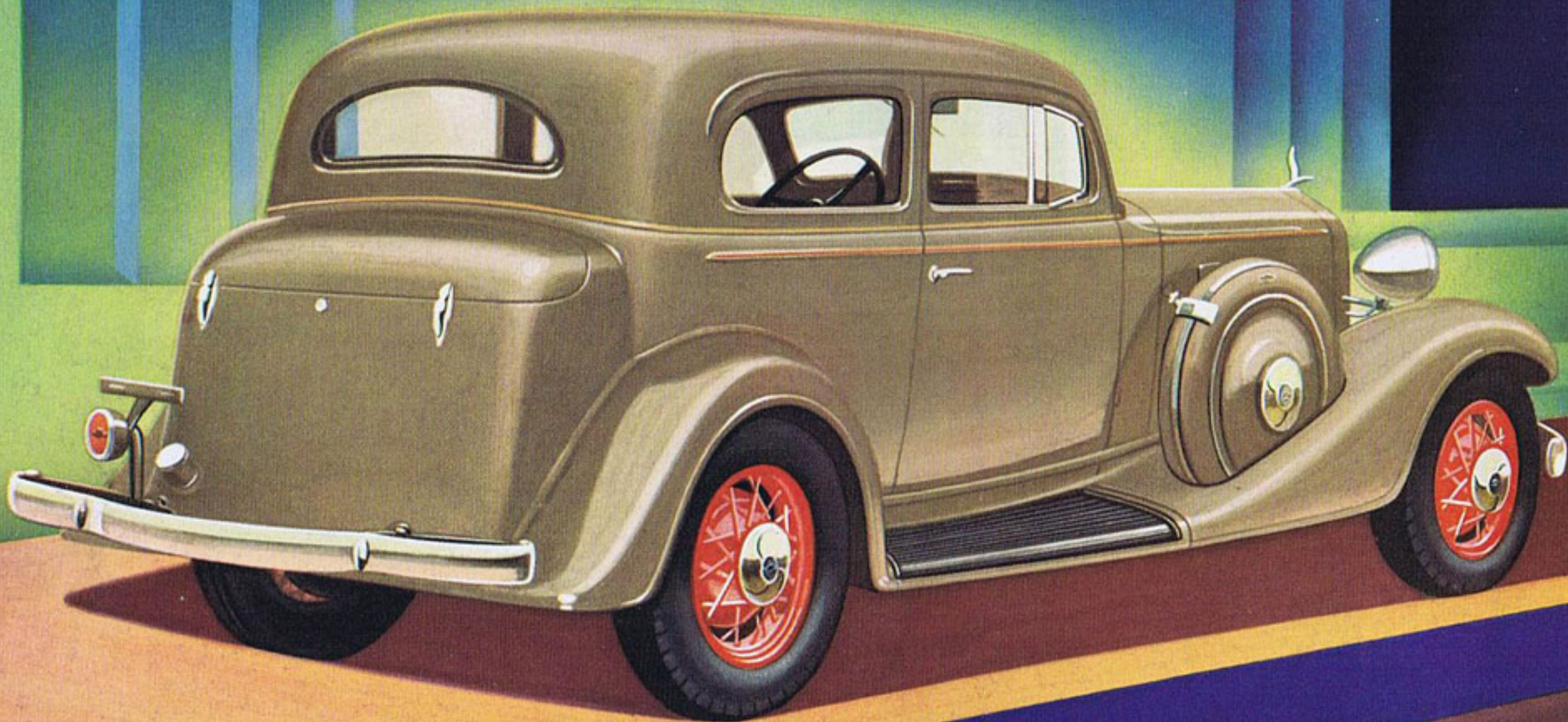
*The*  
**CHEVROLET**  
**MASTER SIX**  
*Sport Coupe*

● A brilliant interpretation of the ideal personal car. Completely outfitted with inside sun deflector, rear window curtain, button door locks, airplane-type instrument panel, ventilators on both doors, adjustable cowl opening, dome light with pillar switch. The back of the spacious rumble seat fits flush with rear deck when closed. Rear window can be raised and lowered. You may select thick mohair or smart Bedford cord upholstery.



Standard equipment on the sport coupe includes five wire wheels. Six wire wheels and fender wells are available at slight extra cost.

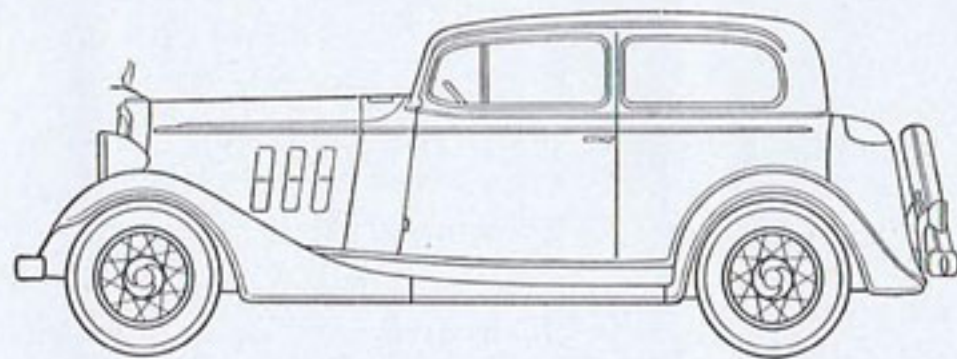




THE LEADER CAN ACCOMPLISH  WHAT OTHERS DARE NOT TRY

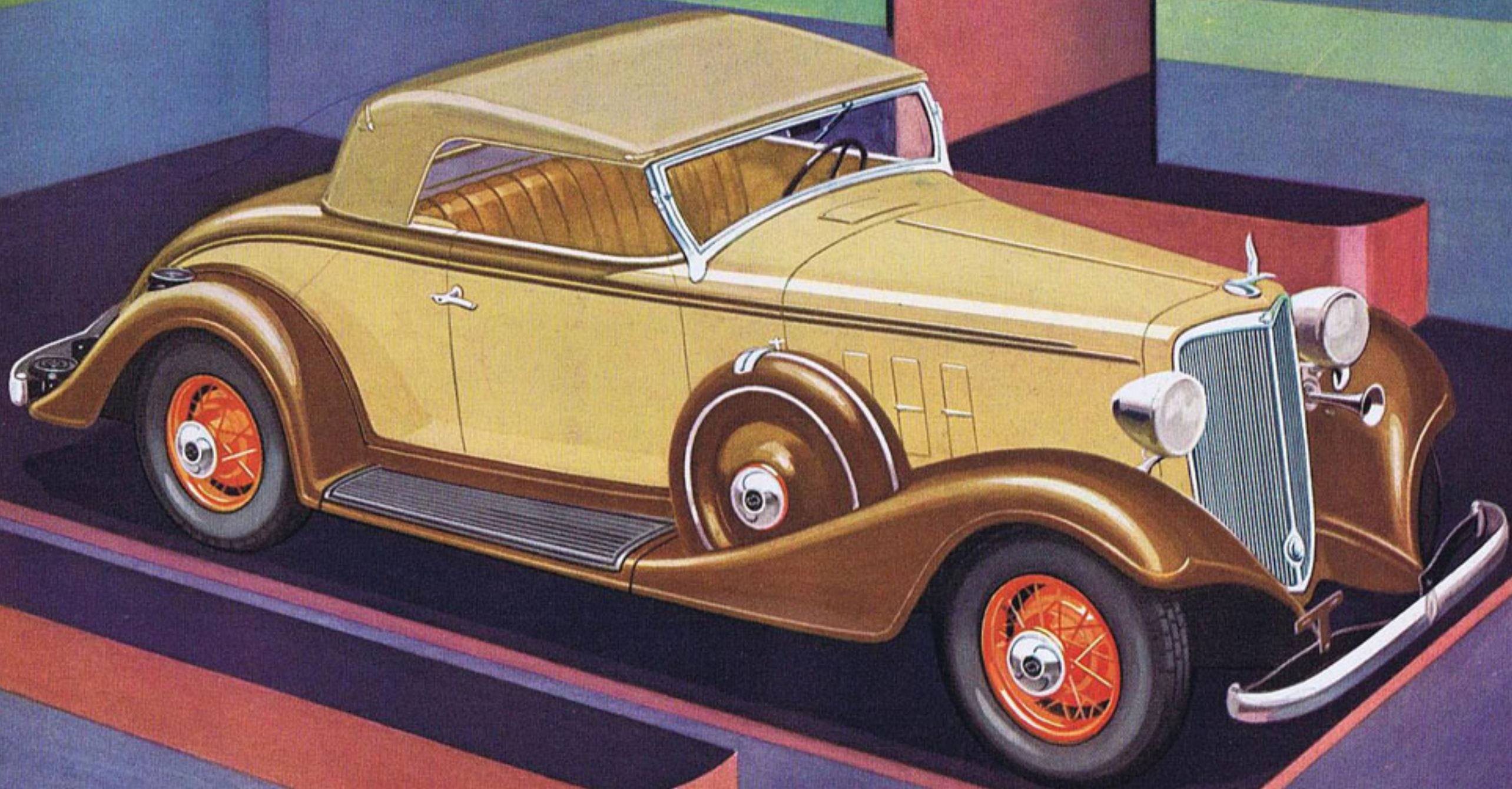
*The*  
**CHEVROLET**  
**MASTER SIX**  
*Town Sedan*

● Combines full five-passenger capacity with the intimate charm of a coupe. Fisher design provides unusual roominess for a car of this type. The big trunk is streamlined to blend with the dynamic body contour. Equipped with inside sun deflector, rear window curtain, button door locks, airplane-type instrument panel, ventilators on both doors, adjustable cowl opening. Available with either heavy mohair or Bedford cord upholstery.



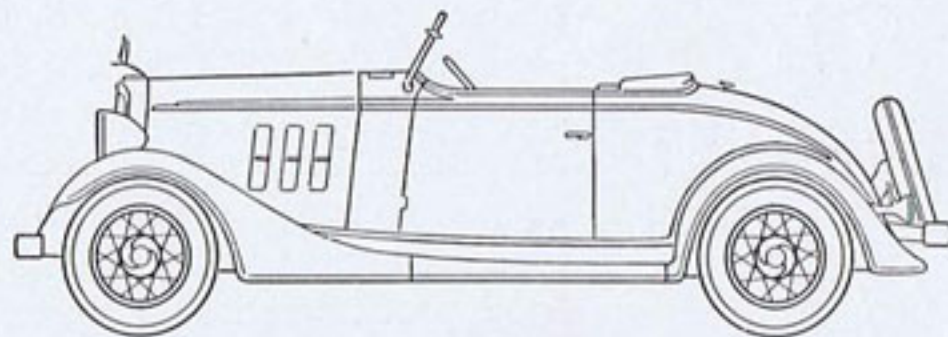
Standard equipment on the town sedan includes five wire wheels. Six wire wheels and fender wells are available at slight extra cost.





THE LEADER CAN ACCOMPLISH  WHAT OTHERS DARE NOT TRY

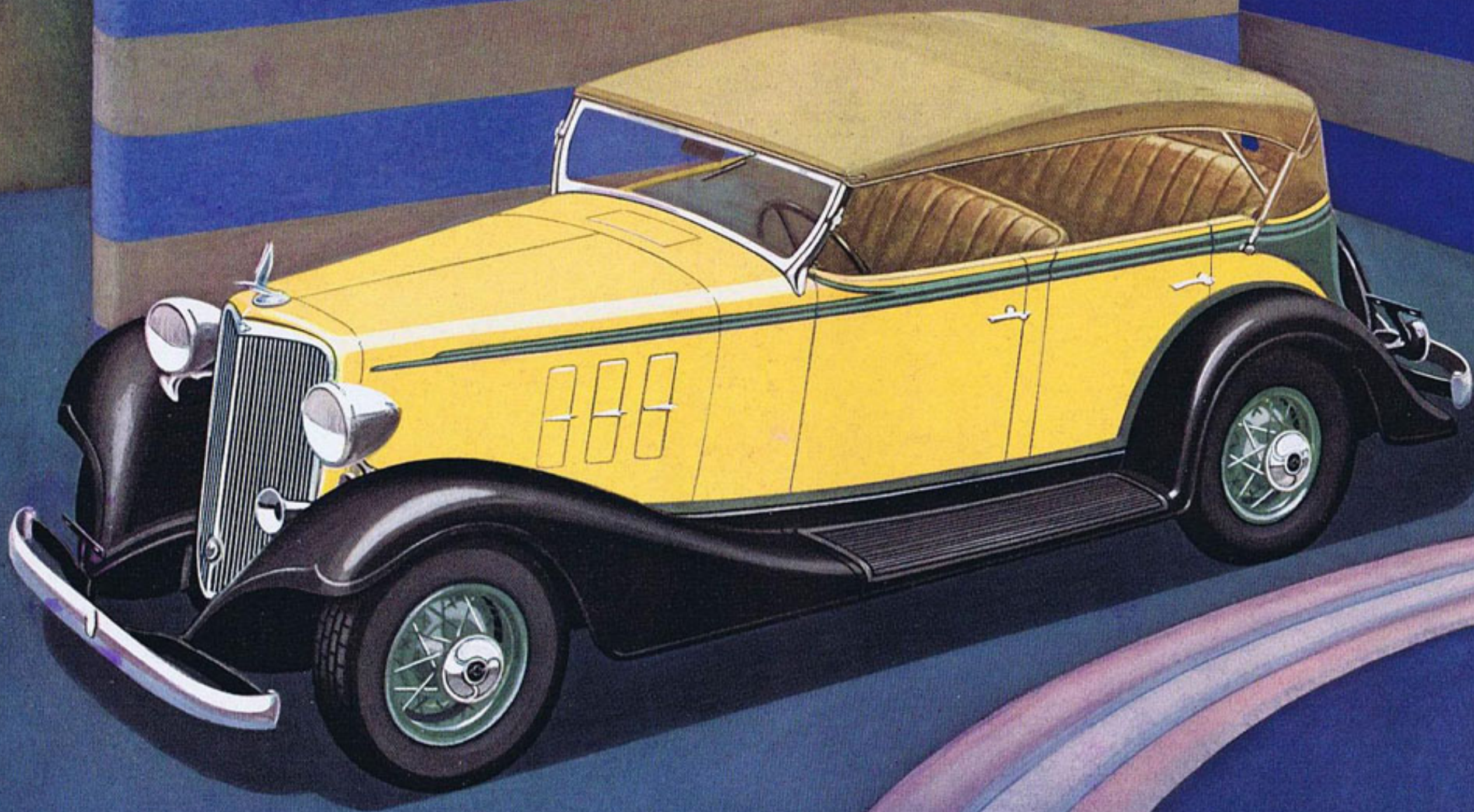
● Again this year, Chevrolet has made the roadster a model of unapproached beauty. Its high points include: A smart colored top which folds completely out of sight. Weathertight side curtains opening with the doors. A rear window mounted in a rubber frame. An adjustable cowl ventilator. Chrome-plated handles on adjustable hood ports. A large rear compartment. Generous pockets on doors and imitation leather upholstery.



Standard equipment on the sport roadster includes five wire wheels. Six wire wheels and fender wells are available at slight extra cost.

*The*  
**CHEVROLET**  
**MASTER SIX**  
*Sport Roadster*



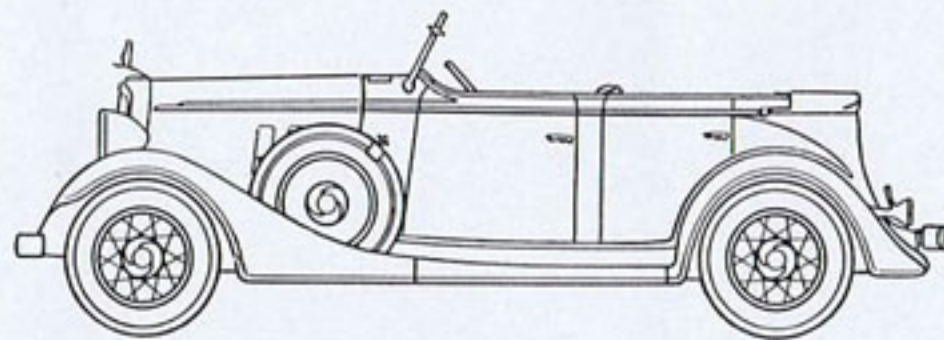


THE LEADER CAN ACCOMPLISH  WHAT OTHERS DARE NOT TRY

*The*  
**CHEVROLET**  
**MASTER SIX**

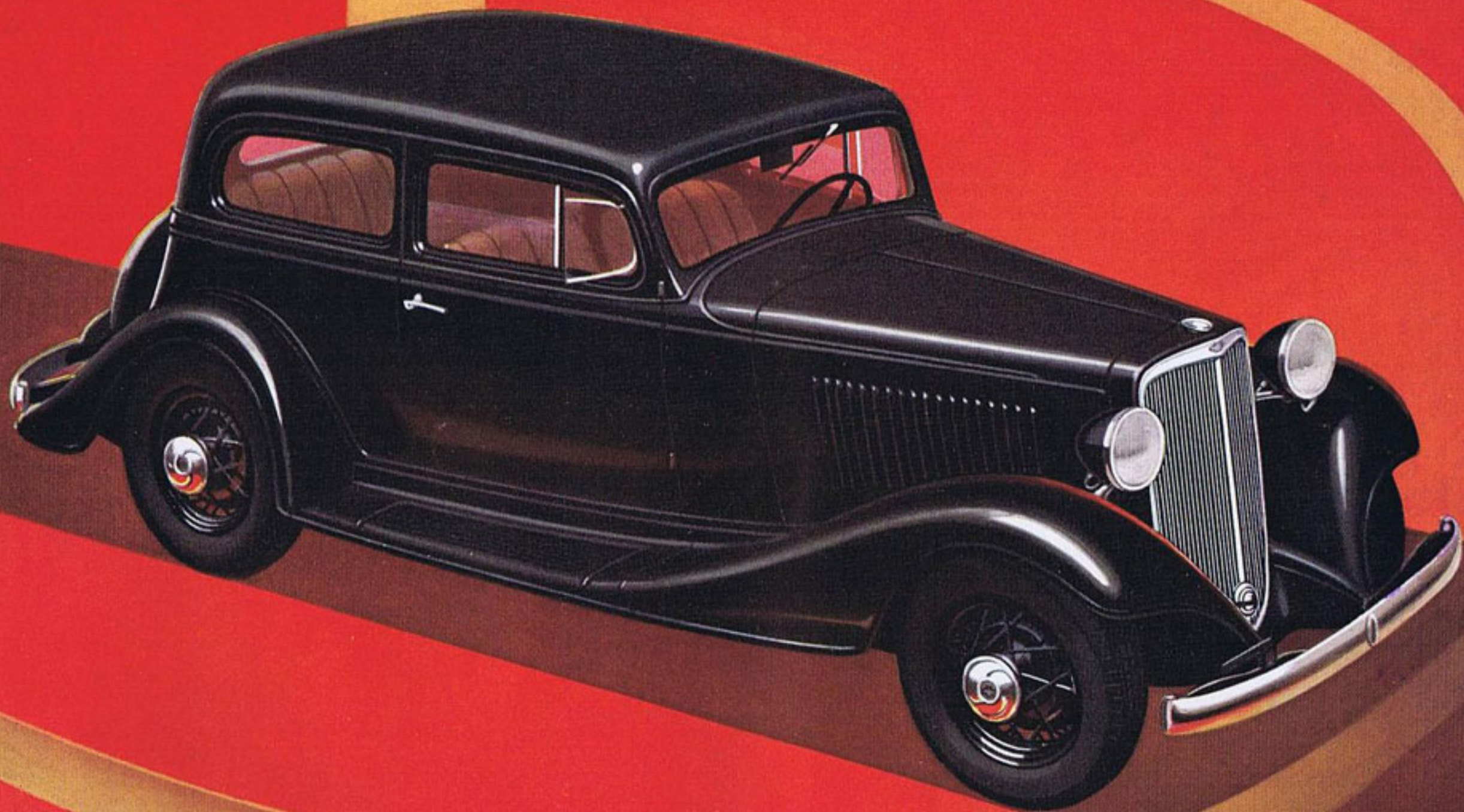
*Phaeton*

● Here is the best reason in the world why the phaeton is due for a vogue as a sport model. This smart example has a colored top, fitting snugly in a neat top-boot, rear window set in rubber frame, rubber floor mats, adjustable cowl ventilator, airplane-type instrument panel, chrome-plated handles on hood ports, weathertight side curtains opening with the doors, two deep side pockets, imitation leather upholstery, and full five-passenger capacity.



Standard equipment on the phaeton includes five wire wheels. Six wire wheels and fender wells are available at slight extra cost.



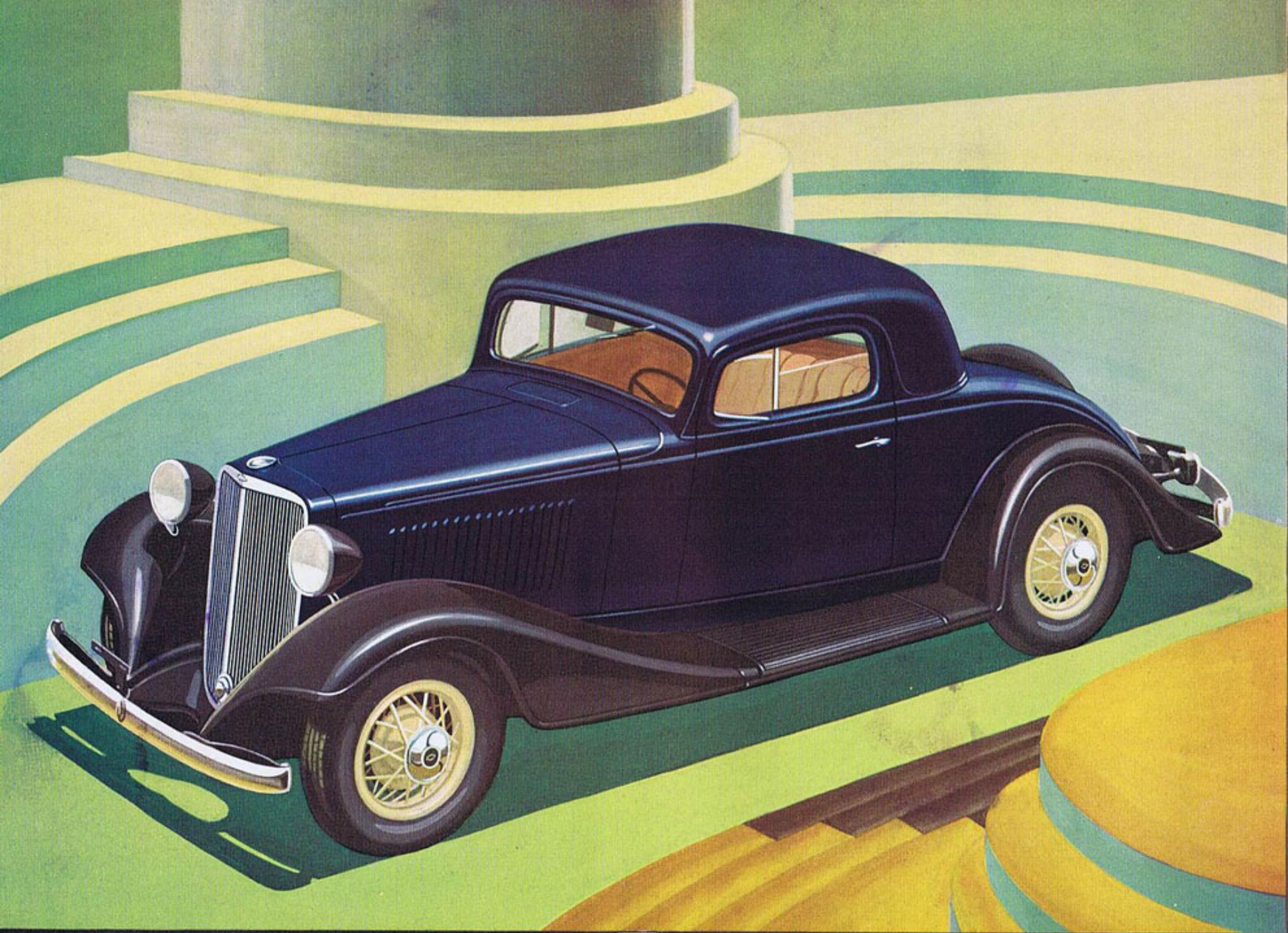


THE LEADER CAN ACCOMPLISH  WHAT OTHERS DARE NOT TRY

*The*  
**CHEVROLET STANDARD SIX**  
*Coach*

● Nowhere, outside the Chevrolet line, can you duplicate the beauty of this spacious closed model. And no other car of lowest price combines so much comfort and roominess with such great smoothness and economy. It is built to give the American family up-to-the-minute motoring at the lowest possible cost. Has Fisher No Draft Ventilation as standard equipment.



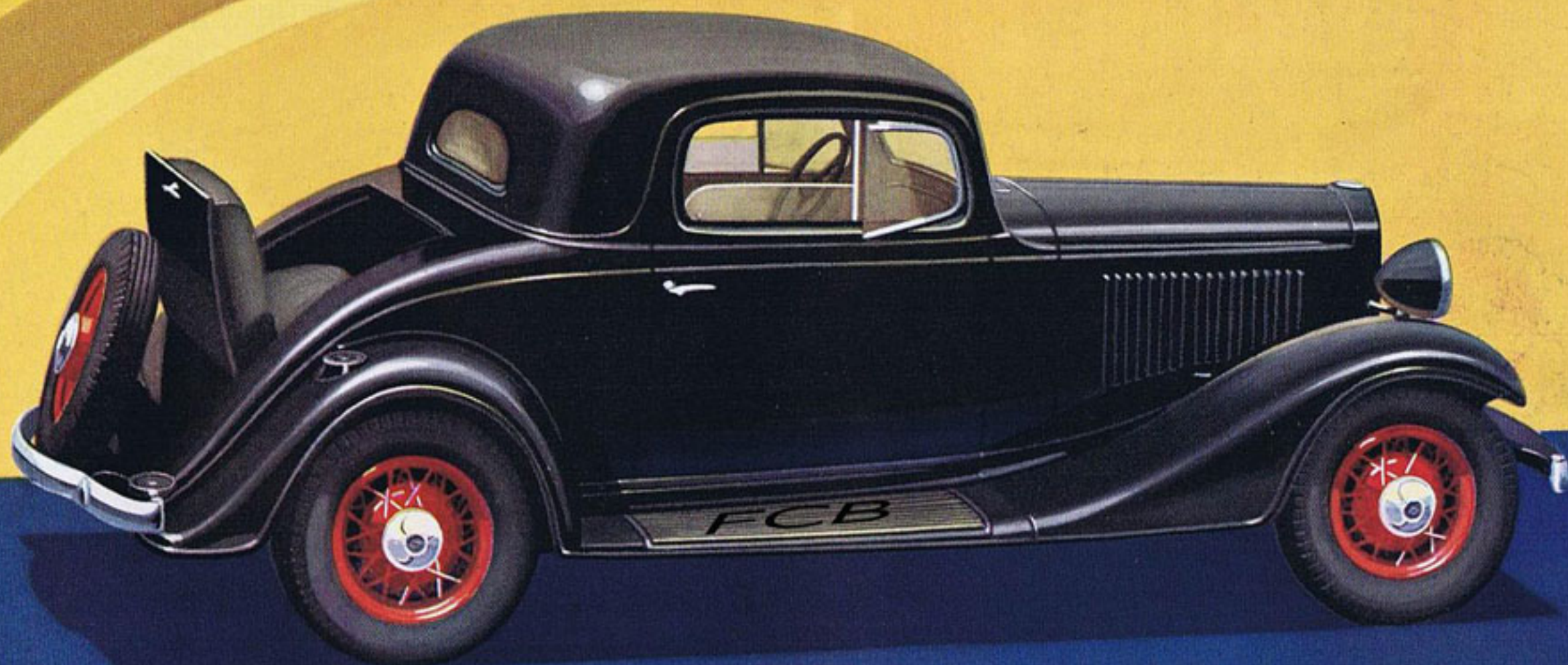


THE LEADER CAN ACCOMPLISH  WHAT OTHERS DARE NOT TRY

*The*  
**CHEVROLET STANDARD SIX**  
*Coupe*

● This roomy model settles the question of what car to buy as a personal car, a second car, or for business purposes. It has the extremely low first-cost and the great economy so desirable in a car for these uses. And it is by far the smoothest, most comfortable and responsive automobile ever offered in its price field. Has Fisher No Draft Ventilation as standard equipment.





THE LEADER CAN ACCOMPLISH  WHAT OTHERS DARE NOT TRY

*The*  
**CHEVROLET STANDARD SIX**  
*Coupe with rumble seat*

● Few sport cars at any price can compare with this striking model in beauty and responsiveness. Because the wheelbase is unusually long for a car at this very low price, the wide rumble seat is really comfortable, and the well-appointed interior provides ample leg room and head room. Has Fisher No Draft Ventilation and safety glass windshield as standard equipment.



# FEATURES

OF THE NEW

# CHEVROLET

NEW "AER-STREAM" STYLING

POWERFUL SIX-CYLINDER ENGINE

FISHER WOOD-AND-STEEL BODIES

FISHER NO DRAFT VENTILATION

SAFETY GLASS IN WINDSHIELD

*(Available all around at small extra cost)*

OCTANE SELECTOR

SILENT SECOND SPEED TRANSMISSION

*IN ADDITION, THE*

*CHEVROLET MASTER SIX*

*OFFERS:*

LONG 110" WHEELBASE

LUXURIOUS BODY INTERIORS

CUSHION-BALANCED ENGINE MOUNTING

IMPROVED FREE WHEELING

SYNCRO-MESH GEAR-SHIFTING

STARTERATOR

CHEVROLET MOTOR COMPANY, DETROIT, MICH.



