

CHEVROLET for 1935

MASTER DELUXE LINE

# FEATURES OF THE MASTER DE LUXE CHEVROLET

NEW STREAMLINE STYLING

NEW FISHER BODIES—WITH TURRET TOP

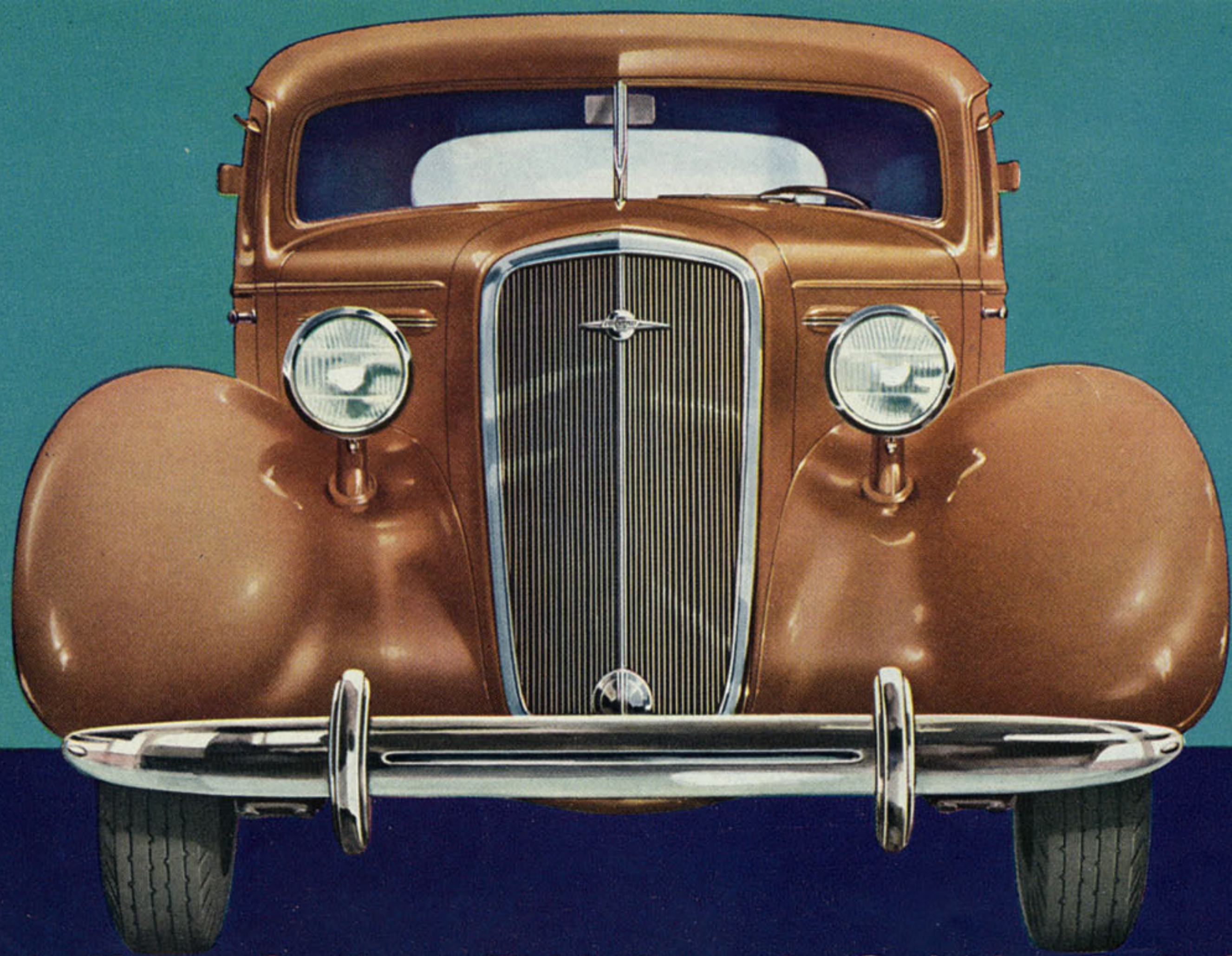
PATENTED KNEE-ACTION

LONGER WHEELBASE—ROOMIER BODIES

GREATER SPEED, POWER AND ECONOMY

BLUE-FLAME VALVE-IN-HEAD ENGINE

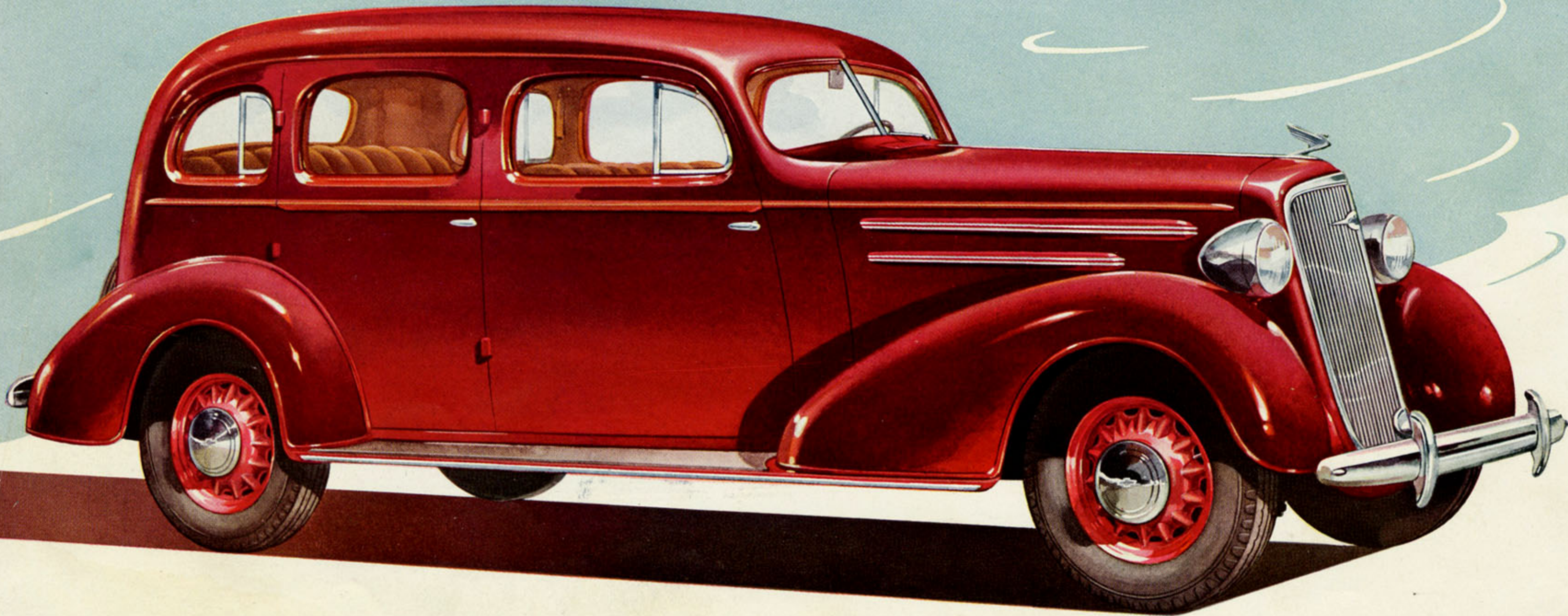
Chevrolet, with its Master De Luxe models for 1935, introduces a new and thrilling style to the low-price field . . . a style so true to every artistic dictate as to win instant appreciation and exert enduring charm. . . . All lines flow unbrokenly from the high, narrow radiator, even the roof presenting a perfectly smooth surface. . . . The smooth roof lines flow into the sides which arch in pronounced and graceful contours. . . . The streamlining is carried out in the "V" windshield, which provides improved vision and helps to decrease wind resistance. . . . The new Master De Luxe models are longer—and notably lower in appearance. . . . It is fitting that such a car should provide the most luxurious riding ease known to the low-price field, as does the Master De Luxe through its employment of Knee-Action. . . . Power of performance throughout normal driving ranges is greater . . . speed of acceleration is remarkably increased . . . while heightened efficiency results in still finer economy of fuel and oil. . . . Chevrolet, in line with its policy of supplying quality transportation at low cost, has priced the Master De Luxe models so low as to leave no doubt of their extraordinary value.



ARISTOCRAT OF THE LOW-PRICE FIELD

CHEVROLET MASTER DE LUXE

*Sedan*

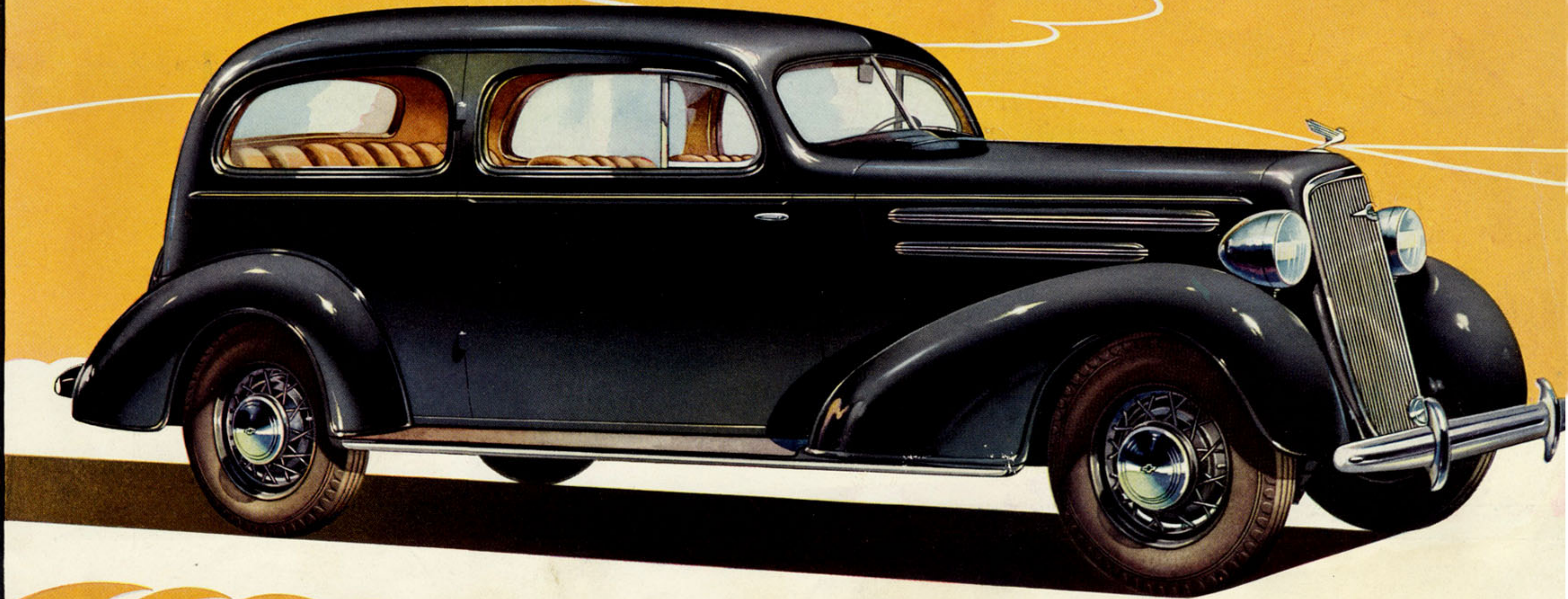


**Features: — Richly upholstered in fine quality mohair... Rear compartment arm rests with recesses in sides of body... Ash receptacles built into each rear arm rest . . . Two position Sun Visor... Glove compartment in Instrument Panel . . . Adjustable front seat... Short spoke steel artillery wheels.**



**Features:**—Ample room for five adult passengers... Right front seat tilts forward, affording wide entrance to rear compartment... Upholstery in fine grade of mohair in rich shades... Windshield wiper can be set any required speed... Heavy spoke wire wheels.

CHEVROLET MASTER DE LUXE *Coach*



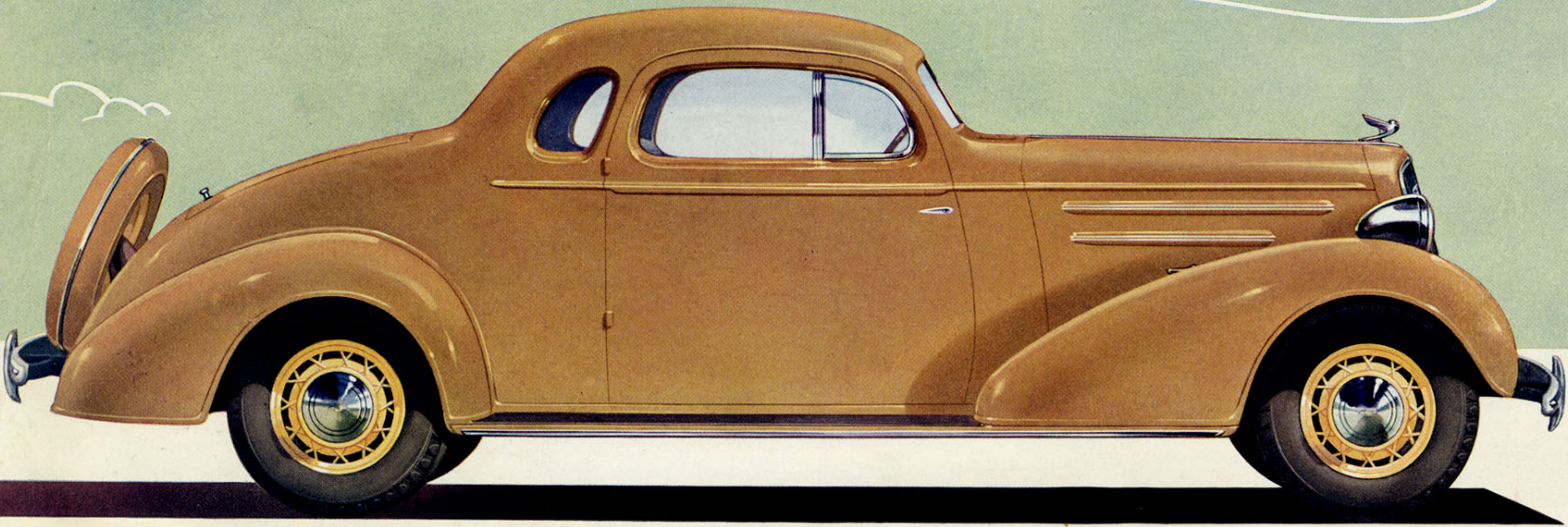
CHEVROLET

MASTER

DE

LUXE

*Coupe*



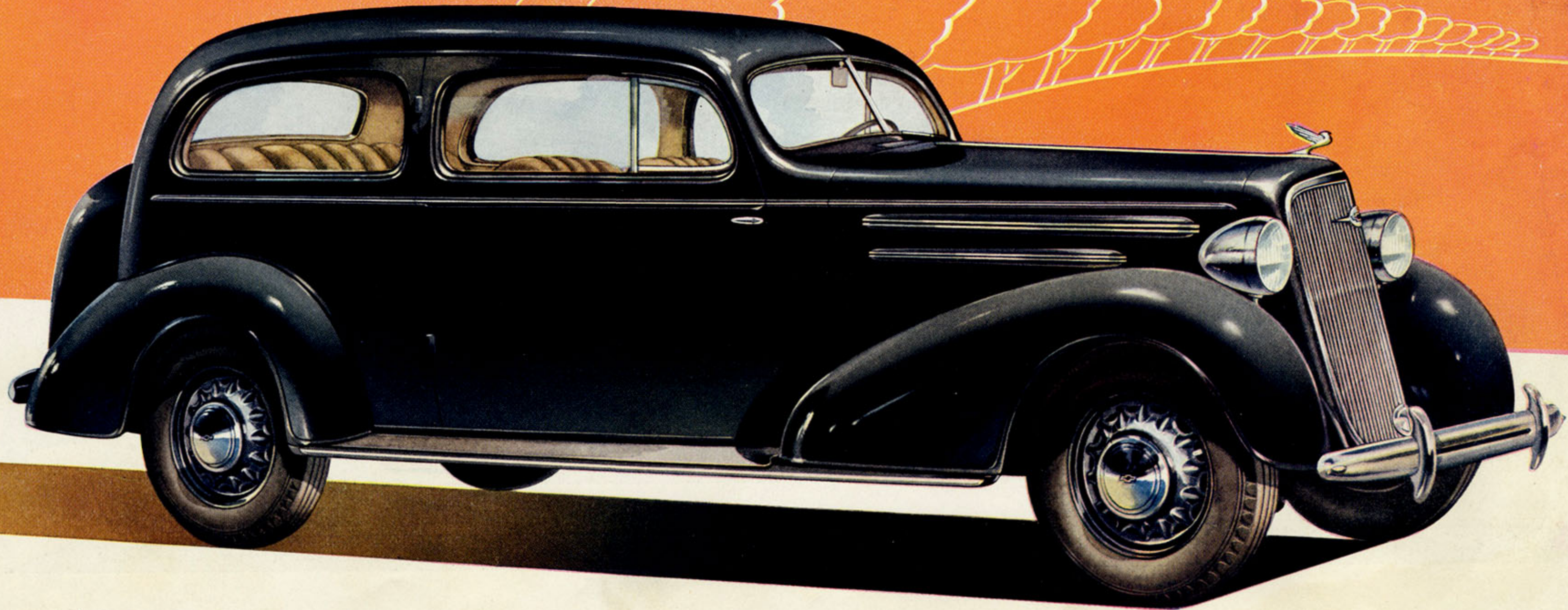
**Features:—Five windows . . . Rich mohair upholstery . . . Large luggage compartment in rear . . . Roof contour flows in smooth, arching streamlines into long, graceful rear deck . . . Broad package shelf back of seat . . . Glove compartment in Instrument Panel . . . Heavy spoke wire wheels.**



**Features:—Roomy seating capacity for five passengers . . . Heavy, durable mohair upholstery of fine quality . . . Large capacity built-in trunk at rear, completely streamlined to conform to body contours . . . Spare tire carried inside . . . Short spoke steel artillery wheels.**

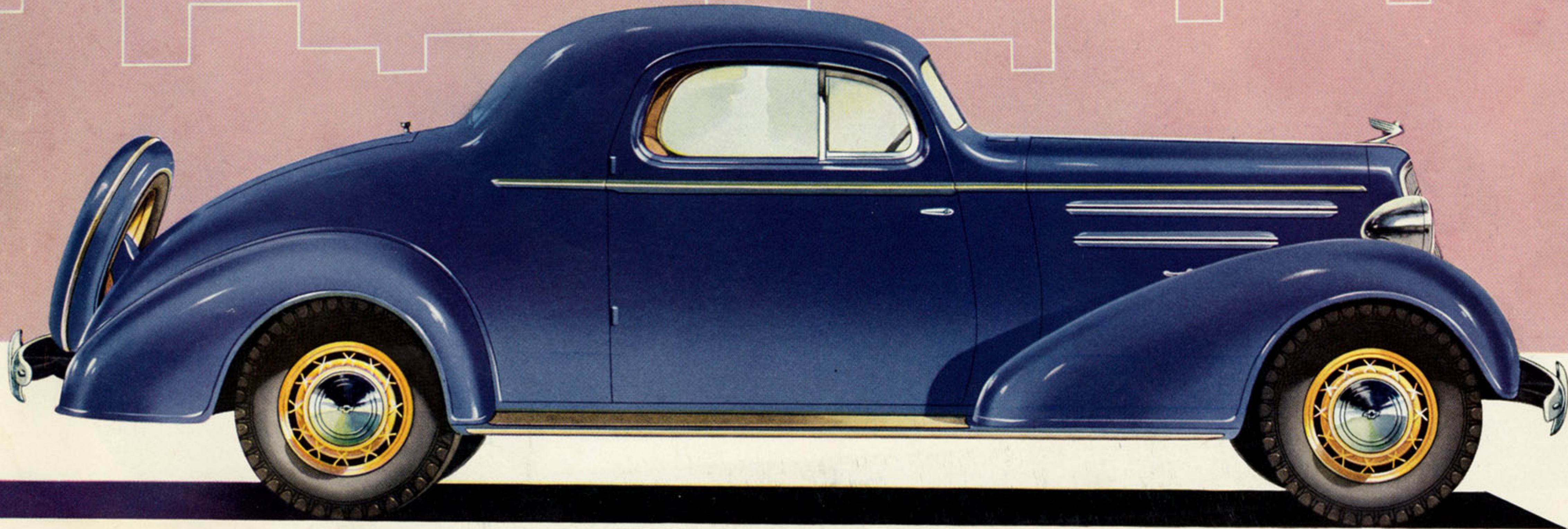
CHEVROLET MASTER DE LUXE

*Town Sedan*



CHEVROLET MASTER DE LUXE

*Sport Coupe*



Features:— Comfortable rumble seat for occasional extra passengers . . . Instrument panel in streamlined design . . . Broad package shelf back of seat . . . Upholstery in fine grade mohair . . . Finger-tip control, adjustable front seat . . . Heavy spoke wire wheels . . . Windshield wiper adjustable to all speeds.

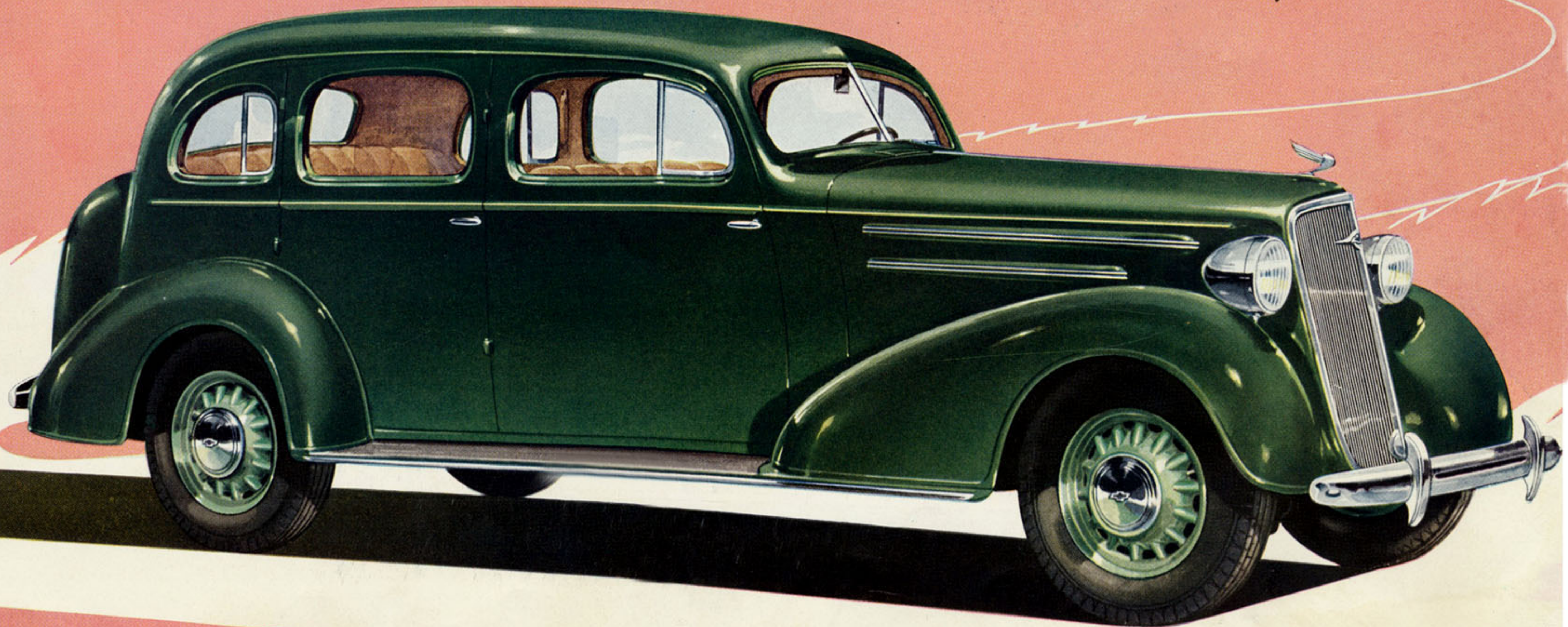




CHEVROLET MASTER DE LUXE

*Sport Sedan*

**Features:—** Built-in trunk in rear, completely streamlined . . . Spare tire carried inside trunk with fender-well mounting optional . . . Front seat is adjustable with finger-tip control . . . Two position Sun Visor . . . Glove compartment in Instrument Panel . . . Rear arm rests, in recesses, are equipped with built-in ash receptacles.



## SPECIFICATIONS

OF THE

1935

MASTER

DE LUXE

CHEVROLET



## SPECIFICATIONS OF THE 1935 MASTER DE LUXE CHEVROLET

**ENGINE:** Six cylinders; valve-in-head type;  $3\frac{5}{16}$ " bore; 4" stroke.

**CYLINDERS:** Cast en bloc (including upper half of crankcase). Head detachable.

**VALVES:**  $1\frac{45}{64}$ " diameter intake;  $1\frac{15}{32}$ " diameter exhaust.

**CONNECTING ROD BEARINGS:**  $2\frac{1}{8}$ " diameter,  $1\frac{9}{32}$ " long. Material: babbitt.

**CRANKSHAFT:** Weighs 69 pounds. Counter-balanced. Harmonic balancer combined with crankshaft pulley. Three main bearings.

**CRANKSHAFT BEARINGS:** Front  $2\frac{1}{16}$ " diameter by  $1\frac{49}{64}$ " long. Center  $2\frac{1}{8}$ " diameter by  $1\frac{7}{8}$ " long. Rear  $2\frac{3}{16}$ " diameter by  $2\frac{11}{64}$ " long. Material: steel-backed babbitt.

**CAMSHAFT BEARINGS:** Front  $1\frac{13}{16}$ " diameter by  $1\frac{27}{32}$ " long. Center  $1\frac{25}{32}$ " diameter by  $2\frac{1}{16}$ " long. Rear  $1\frac{5}{8}$ " diameter by  $1\frac{3}{8}$ " long. Center and rear bearing, steel-backed babbitt.

**OILING SYSTEM:** Positive pressure feed to crankshaft main bearings, camshaft bearings

and valve rocker arms. Vane type pump in crankcase; oil pressure gauge in instrument panel. Crankcase ventilator. Oil pump capacity 8.5 quarts per minute. Screen on intake side of oil pump. A positive stream of oil is forced along the path of each connecting rod dipper from direction opposite than that of rotation of connecting rod.

**CARBURETOR:** Carter—down-draft construction. With accelerating pump. Single adjustment. Gasoline filter in fuel pump. AC air cleaner, silencer and flame arrester. Fuel mixture is heated (thermostatically controlled) in manifold heat chamber.

**FUEL:** Mechanical fuel pump. 14-gallon tank in rear. Gasoline gauge on instrument panel.

**IGNITION:** Delco-Remy with high tension wires waterproofed. Automatic and vacuum spark control. Octane Selector connected to distributor.

**TRANSMISSION:** Syncro-Mesh silent-second design, three speeds forward and one reverse; unit power plant construction.

**INSTRUMENT PANEL:** Indirectly lighted. Includes ammeter, oil gauge, speedometer, theft-resisting ignition lock, lighting switch, engine heat indicator, carburetor choke, throttle control, gas gauge, Radio plate and package compartment with lock.

**CONTROLS:** Rubber pads on clutch and brake pedals. Treadle accelerator pedal also operates starter.

**CLUTCH:** New improved dry single plate. Single cushion-mounted clutch disc with braided-moulded facings.

**COOLING:** Harrison "V" center core radiator, water pump on fan. Core material: copper.

**KNEE-ACTION UNIT:** includes double-action shock absorbers.

**REAR AXLE:** Semi-floating type. One-piece banjo-type pressed steel housing; one-piece differential case.

**BRAKES:** Four-wheel service internal-expanding type on 12" brake drums front and rear; width of brake lining,  $1\frac{3}{4}$ ".

**TIRES:** 5.50 x 17 balloons.

**WHEELS:** 5 wire wheels and rear carrier standard equipment except as specified. Steel spoke wheels carried in trunk or rear carrier.

**STEERING GEAR:** Semi-reversible, worm and sector type.  $17\frac{1}{2}$  to 1 ratio.

**SPRINGS:** Long chrome-vanadium semi-elliptic type, rear 54"; self-adjusting shackles. Delco-Lovejoy shock absorbers rear on all passenger models.

**FRAME:** Channel section  $5\frac{1}{4}$ " deep, width of flange  $2\frac{3}{8}$ ". Stock thickness  $\frac{1}{8}$ "; 5 sturdy cross members. Two sub-frames. "Y-K" shape sub-frame construction.

**EQUIPMENT:** All cars equipped with high pressure gun lubrication; complete tool kit; automatic stoplight; rear vision mirror; windshield; automatic wiper; vibrator-type horn; two-beam headlamps; parking bulbs on all models. Adjustable sun visor; adjustable driver's seat. Fisher No Draft Ventilation.

**WHEELBASE:** 113".

*The right is reserved to change specifications, colors or prices without incurring any responsibility with regards to bodies or chassis previously sold. Chevrolet cars can be purchased on the liberal G. M. A. C. plan with a small initial payment and easy monthly installments. Accessories and spare tires extra.*

CHEVROLET MOTOR COMPANY, DETROIT, MICHIGAN

Printed in U. S. A.

**CHOOSE CHEVROLET  
FOR PRICE, ECONOMY,  
PERFORMANCE**



