




1969 CHEVY NOVA

Putting you first, keeps us first

CHEVROLET





**If anyone else wants to
build a roomy, inexpensive
economy car that legitimately
deserves words like “handsome”
and “sporty”...
we’ve got blueprints.**

Above: Nova Coupe with SS package you can order (see pages 10-11)

Shown on cover: Nova Coupe





1969 Nova. Don't be fooled by expensive imitations.

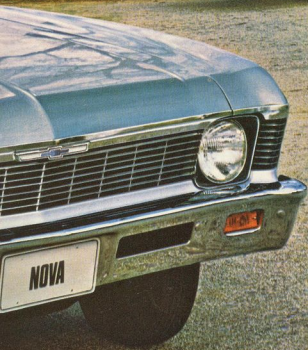
Nova Coupe. It doesn't take too much over two thousand to get into it. What you get out of it is nickel-nursing economy like you wouldn't believe. But money you don't pay isn't everything. Nova shatters the myth that economy cars have to be cramped and ugly. As for performance, you can order from a list of six engines (up to 300 hp) and six transmissions (includes clutchless, manual-shift Torque-Drive at a very low price). Now add maybe a vinyl roof cover, Exterior Decor or Custom Exterior package. You just might get the idea Nova can look bigger and more beautiful than small cars are supposed to. That's the idea. The Nova Coupe can *grow* on you.

Many extra-cost Options & Custom Features are illustrated or described herein. See pp. 10-13 or your Chevrolet dealer for details.

Above: Nova Coupe.

Left: Nova Coupe with vinyl roof cover and Exterior Decor you can order.



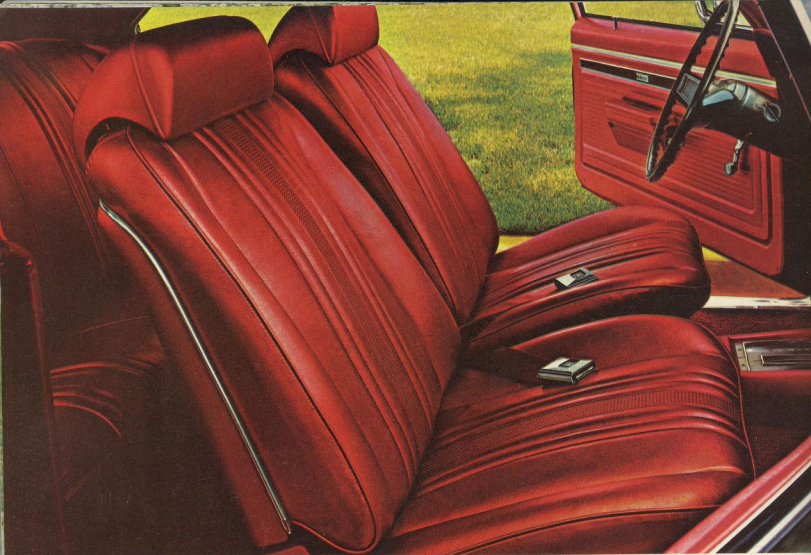


The room...the ride...the price. Do you even care what car's in second place?

Nova Sedan. Already competition is saying, "Wait 'til next year." This 4-door is roomy—bring along five friends and try it on for size. It's very smooth, very quiet—thanks to very special improvements like smooth drivelines and springs specifically selected by computer for each Nova. An ingenious new locking system makes Nova hard for others to take. An import kind of price makes it easy for you. Buy it for the family. Or buy it for the fun of it. Either way the Nova Sedan *moves* a lot of people.

Left: Nova Sedan.

Above: Nova Sedan with Exterior Decors you can order.



Strato-bucket seats can be ordered for the coupe in black, blue or red vinyl.

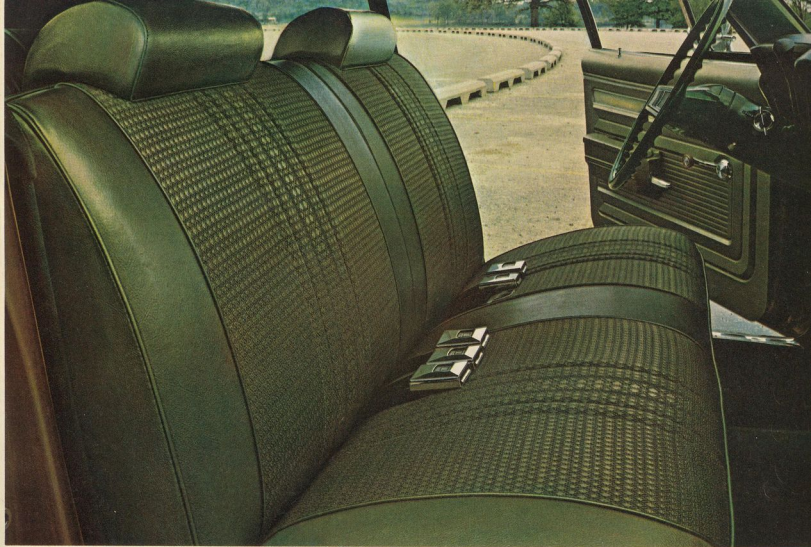
Below: Custom Interior can be ordered in vinyl.



Nova's new instrument panel: no obstacle courses for eyes and hands.

**Obviously, Nova
interiors are not limited
to small-scale thinking.**





Custom Interior can be ordered in luxurious pattern cloth and vinyl in blue, green or midnight green, and all-vinyl in black or midnight green.

Most economy-car interiors come two ways: humdrum drab or dimestore dull. Not Nova. Taste-ful, roomy interiors come in good, better and best. Consider the standard versions: soft, subtle, pattern cloth-and-vinyl in blue or green. Or order black if you like things all-vinyl. Head restraints are standard. And notice the newly styled instrument panel with exceptional gauge and control placement.

For something even better, specify a sport-styled steering wheel and maybe the Special Interior Group. It offers attractive trim embellishments and convenience lighting. A bit more money buys all that plus deluxe upholstery choices, color-keyed deep-twist carpeting and extra-thick seat cushions—front and back. We call it the Custom Interior and rightly so.

Now if all this beauty is lost on you, perhaps it's because you can't see anything but bucket seats. Not the ordinary kind, but the best: Chevrolet's deep Strato-buckets. Can't say we blame you.

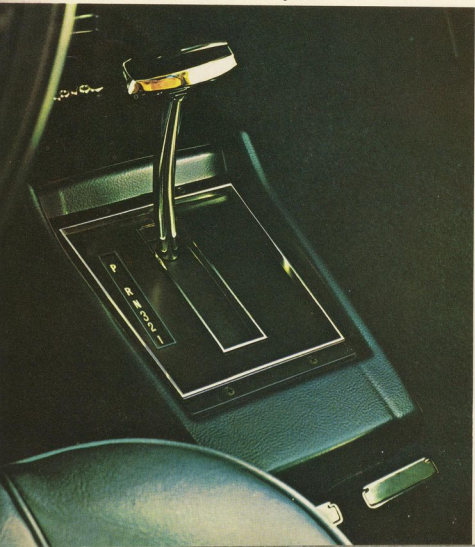


Standard cloth-and-vinyl interior.



Nova Sedan. Available with Custom Exterior and window moldings.

Center console can be ordered when bucket seats are specified.



If other
low priced cars
look more
modest than
the '69 Nova,
they have more
to look modest
about.

Nova SS with Custom Exterior, vinyl roof cover and mag-styl



Nova is a born master of disguise. Take the SS package. Slip it on the coupe... shazaam! The muscular Nova SS appears, ready to take on the house. If competition had one like this, we'd have a bit more competition.

Naturally, there are lots of other ways to make Nova look more like you. The extra-cost appearance features listed here also can be found on the back cover, a handy place to keep track of things that strike your fancy.

NOVA SS. For coupe only. Black-accented grille, special SS identification, rear trim modifications, red- or white-stripe tires and simulated hood air-intakes and fender louvers. All this is but subtle indication of a high-performance 300-hp Turbo-Fire 350 V8 engine, Special 3-Speed gearbox, power disc brakes and special suspension.

CUSTOM EXTERIOR. Louver-like front fender trim with polished metal highlights; body sill and rear fender molding; black body sill and lower rear

fender; and ribbed rear trim panel. With the coupe comes accent striping, bright side window molding, black lower body accent band and additional lower body molding; with the sedan, body side molding with black vinyl insert.

EXTERIOR DECOR. Louver-like front fender trim; body side molding with black vinyl insert; bright window moldings (coupe only); bright roof drip molding (sedan only).

CENTER CONSOLE. Can be ordered on coupe with bucket seats and most transmissions. Also can be ordered with special V8 instrumentation.

VINYL ROOF COVER. Available in black, parchment, midnight green, dark blue or dark brown, depending on exterior color selected.

WHEELS & TRIM. You can order full or mag-spoke wheel covers among others; trim rings; rally wheels; or Sport Wheels for SS.

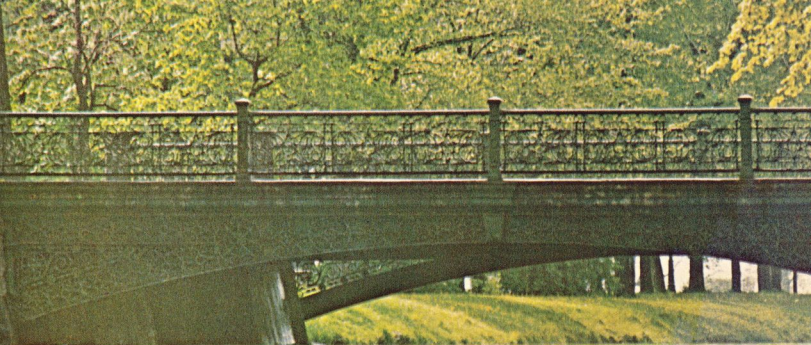
APPEARANCE GUARD ITEMS. Bumper guards, door-edge guards, floor mats, vanity visor mirror.



Rally wheels and white-stripe

wheel covers you can order.





Remote-control outside rearview mirror offers convenient, precise adjustment, especially when more than one driver uses the car.



Would rush hour traffic or long trips be tolerable without a radio?



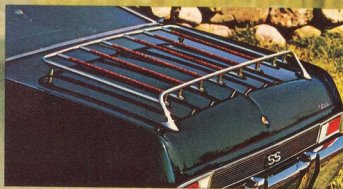
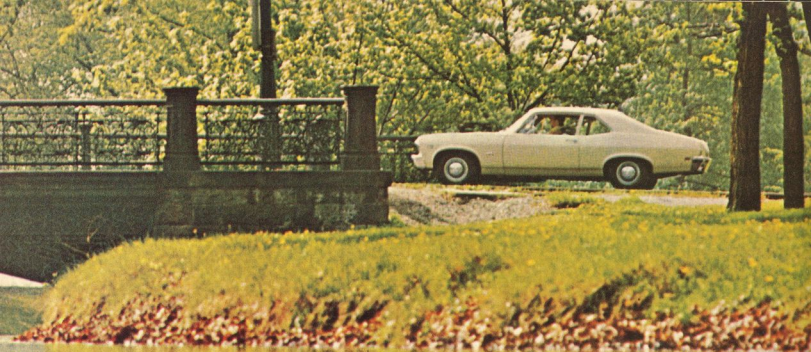
Torque-Drive, a low-cost, clutchless manual transmission, lets you squeeze maximal economy from 4- and 6-cyl. engines.

Nothing small about this list of comfort and convenience items.

Try ordering some of these extra-cost features for other cars in Nova's field—especially the imports. No go. Nova is way out front in bringing big-car convenience to economy-car driving. See something here your Nova might like? Make a note of it on the back cover checklist.

Power Steering • Power Brakes • Power Disc Brakes—provide effortless, steady stopping power, even under severe braking conditions, thanks to high fade resistance • Four-Season Air Conditioning • Auxiliary Lighting—includes the convenience of lights for luggage compartment, glove compartment, underhood, ashtray and instrument panel • Headlight Washer—a quick blast of cleaning fluid frees your headlights of dirt or salt deposits, even while moving • Luggage Carrier • Child Safety Seat—keeps your youngster secure with seat belt while letting him sit high enough to see • Speed Warning Indicator—warns driver when desired speed is exceeded • Soft-Ray Tinted Glass • AM Radio, AM/FM Radio, AM/FM Stereo Radio, Rear-Seat Speaker • Stereo Tape System • Electric Clock • Remote-Control Rearview Mirror • Rear-Window Defroster • Special V8 Instrumentation for console—temperature, oil and fuel gauges plus ammeter on console; tachometer, clock, low-fuel indicator on instrument panel • Heavy-Duty Battery • Dual Exhaust System • 42- and 63-Amp Delcotron Generators • Heavy-Duty Radiator • Positraction Rear Axle—automatically imparts drive to the rear wheel with the most traction • Performance, Economy and Special Axle Ratios • Engine Block Heater

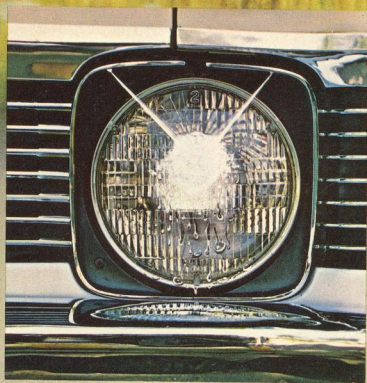
For additional Options & Custom Features, see pages 8-11 of this brochure or talk to your Chevrolet dealer.



Add a stylish, new luggage carrier to Nova.



Make hot, sticky, dusty days a memory with Four-Season air conditioning.



New headlight washers clean lenses at the touch of a button.



Listen only to music you like to hear with a stereo tape system.

NOVA FACTS AND FIGURES

ENGINES & TRANSMISSIONS	3-Speed	Special 3-Speed	4-Speed	Torque-Drive	Power-glide	Turbo Hydra-Matic
90-HP SUPER-THRIFT 153 FOUR*	*			•	•	
140-HP TURBO-THRIFT 230 SIX*	*			•	•	•
155-HP TURBO-THRIFT 250 SIX	*			•	•	•
200-HP TURBO-FIRE 307 V8*	*		•		•	•
255-HP TURBO-FIRE 350 V8		•	•		•	•
300-HP TURBO-FIRE 350 V8†		*	•		•	•

*Standard. †Available only with Nova SS.

CHECK YOUR CHEVROLET DEALER FOR MODEL APPLICATION AND AVAILABILITY WITH OTHER EQUIPMENT

SPECIFICATIONS

Wheelbase.....	111.0"	Height, sedan.....	53.9"
Width, overall.....	72.4"	coupe.....	52.5"
Length, overall.....	189.4"	Luggage compartment	
Tread, front.....	59.0"	sedan (usable cu. ft.)....	12.4
rear.....	58.9"	Steering ratio (manual overall)...	28:1
		Fuel tank capacity.....	18 gal.

POWER TEAMS

There are a few people around who don't think an economy car like Nova should offer such a large list of power teams. Our competitors. Could be they figure your needs are the same as the next man's. We figure different. So go ahead, choose from six engines and six transmissions. Sure, some are a little less popular than others, but we keep building them. People expect that from a leader.

Available this year for Nova is Chevrolet's popular Turbo Hydra-Matic 3-speed automatic transmission, now available for all Sixes and V8s. It joins the remarkable new economy transmission, Torque-Drive, with clutchless 2-speed manual shifting. Big news in engines, too: a 255-hp V8 that runs on regular gas. All Nova engines boast quieter accessory drive systems.

Standard Engines

90-hp Super-Thrift 153 Four is renowned for economy. Operates under single-barrel carburetor and manual choke. Compression ratio: 8.5:1.

140-hp Turbo-Thrift 230 Six provides smooth 6-cyl. power for town or freeway. Single-barrel carburetor, automatic choke and 8.5:1 comp. ratio.

200-hp Turbo-Fire 307 V8 turns out responsive performance with 2-barrel carb, automatic choke. Uses regular gas. 9.0:1 comp. ratio.

Extra-Cost Engines

155-hp Turbo-Thrift 250 Six delivers extra power and sure economy. Has seven main bearings, fully counterweighted crankshaft, single-barrel carburetor; 8.5:1 comp. ratio.

255-hp Turbo-Fire 350 V8 gives you big V8 performance on regular-gas savings. Has new 2-barrel carburetor and 9.0:1 comp. ratio.

300-hp Turbo-Fire 350 V8 comes with Nova SS only. Turns on sports response with performance-rated 4-barrel carburetor and 10.25:1 comp. ratio.



Standard Transmission

3-Speed fully synchronized—the standard transmission for all engines except 255-hp and 300-hp V8s; offers smooth shifting—up or down. Shift lever on steering column; floor mounted at extra cost.

Extra-Cost Transmissions

Special 3-Speed fully synchronized—available at extra cost for 255-hp V8; standard with 300-hp V8. Includes a sporty floor-mounted shift lever.

4-Speed fully synchronized—positive, fast shifting that comes with a floor-mounted shift lever and can be ordered with all V8 engines.

Torque-Drive—clutchless 2-speed manual shifting especially geared for economical operation. Can be ordered with 4- and 6-cylinder engines only.

Powerglide—smooth automatic transmission you can specify. Has column-mounted shift lever (console-mounted if console is ordered).

Turbo Hydra-Matic—this extra-cost automatic transmission features smooth manual or automatic shifting through three forward speeds. Console or column-mounted shift lever.

HERE'S WHAT KEEPS NOVA NEW

Body by Fisher provides Nova with the greatest concept in coachwork by far. Superb strength and security stems from inner and outer body panels and heavily ribbed and reinforced underbody. A quieter ride than ever can be chalked up to new body insulation. For security, check the new anti-theft ignition switch on the steering column. It locks the ignition, steering wheel and transmission shift lever. New spark plugs and ignition wiring help minimize radio signal interference. And new key head designs provide easier lock operation.

Long-Life Features

Choose from a wide selection of *Magic-Mirror acrylic lacquer finishes* (most are new for '69). To help Nova hang onto its beauty longer: *flush-and-dry rocker panels* wash and dry themselves; *four inner steel fenders* help shield critical exterior areas from the effects of salt, tar and stones. Maintenance is minimized by the following items.

Long-life exhaust system with aluminumized critical areas for extra durability. *Safety-Master self-adjusting bonded brakes* that automatically adjust themselves when you back up and apply brakes. New this year are *finned front brake drums* and *quieter linings*. *Delco Energizer* big-power battery; "Delco Eye" glows when it needs fluid.

Suspension

Greater riding comfort comes from new, computer-selected springs, independent front coil suspension design, bias-mounted rear shock absorbers and Mono-Plate single-leaf rear springs, cushion-mounted front frame section and rubber-isolated partial front frame. Standard wheels are 14-inch size. Ask your dealer about tire sizes and features.

1969 Nova Safety and Security Features

- Energy-absorbing steering column
- Seat belts with pushbutton buckles for *all* passenger positions
- Shoulder belts with pushbutton buckles and special storage provision for driver and right front passenger
- Two front-seat head restraints
- Passenger-guard door locks—with forward mounted lock buttons
- Four-way hazard warning flasher
- Dual master cylinder brake system with warning light and corrosion resistant brake lines
- Folding seat back latches
- Dual speed windshield wipers and washer
- Dual-action safety hood latch
- Outside rear view mirror
- Backup lights
- Side marker lights and parking lights that illuminate with headlights
- Energy-absorbing instrument panel, padded sun visors
- Reduced-glare instrument panel top, inside windshield moldings, horn buttons, steering wheel hub, and windshield wiper arms and blades
- Wide inside day-night mirror with deflecting base
- Lane change feature in direction signal control
- Safety armrests
- Thick laminate windshield
- Soft, low-profile window control knobs, coat hooks, dome light
- Padded front seat-back tops
- Smooth contoured door and window regulator handles
- Anti-theft ignition key warning buzzer
- Anti-theft ignition, steering and transmission lock
- Starter safety switch on all transmissions
- Tire safety rim
- Safety door latches and hinges
- Uniform shift quadrant.

