

'78 CHEVY BLAZER



CHEVY TRUCKS

BUILT TO STAY TOUGH.

BLAZER BASICS

What's new for '78.

Tough and rugged as ever, Blazer offers more conveniences this year. New features include:

- New available fold-up rear seat.
- Recessed floor behind front seat for more rear seat leg room.
- Power windows—power door locks now available.
- New brushed bright metal door trim panel and instrument panel inserts (Cheyenne models).
- Newly styled, smaller diameter steering wheel.
- Increased corrosion protection.
- New high-back bucket seats.

Available full-time 4WD. What it is and how it works.

When available automatic transmission is ordered, a special interaxle differential allows the system to remain in 4-wheel drive both on and off the road. There's no more shifting into or out of 4-wheel drive. No more getting out to lock and unlock front hubs when moving on or off the highway. All 4-wheel-drive controls are located inside the cab.



Interaxle differential—the key to the full-time 4WD system.

With Blazer's full-time 4-wheel-drive, the interaxle differential is built into the transfer case. This device compensates for variations in speed between the front and rear axles while delivering power to both. For off-road or low-traction operation, the interaxle differential can be bypassed so that both axles are locked together. When in high- or low-lock, a dash-mounted warning light remains on. For normal operation, the transfer case can remain in "high" whether Blazer is on or off the road.



Drive choices with available full-time 4WD.

H Loc Both axles engaged and locked at a 1:1 gear ratio. Used only on low-traction surfaces which allow wheel slippage.

H Power is provided to both axles in direct drive. Used for all normal driving on high- or low-traction surfaces.

N Transfer case is disengaged. Used for power takeoff operation.

L Interaxle differential provides power to both axles at 2:1 gear reduction. Used when maximum power is required.

L Loc Both axles engaged and locked at 2:1 gear reduction. Used only on extremely low-traction surfaces.



Conventional 4WD with manual transmission.

Chevrolet's conventional 4WD system is standard on 4WD Blazers equipped with 3-speed or 4-speed manual transmission. Free-wheeling hubs included.

2WD also available.

Massive Girder Beam independent front suspension



and 2-stage rear leaf springs give the 2-wheel-drive Blazer a comfortable ride and good load-carrying ability.

Smooth-ride suspension.

The standard suspension system on 4-wheel-drive Blazers incorporates leaf springs front and rear. Spring rates, camber and shock absorber valving have been designed to provide a surprisingly smooth ride.

Low entry height, high ground clearance.

With the transfer case mounted directly to the transmission, Blazer 4-wheel drive's entry height is only 21.6 inches, yet it has 7.0 inches of ground clearance.



COVER: BLAZER CUSTOM DELUXE.

BELOW: BLAZER CHEYENNES.

© 1977—Chevrolet Motor Division, General Motors Corporation.

BLAZER CHEYENNE CONVERTIBLE



BLAZER CHEYENNE

Many vehicles in this catalog are shown with available factory-installed options, dealer accessories and specialized equipment from various independent suppliers.

BLAZER INTERIORS

Custom Deluxe interior.

Driver's high-back bucket seat is trimmed in plaid-pattern vinyl in buckskin color. Matching auxiliary front bucket seat and rear bench seat are available. One-piece door trim panels and foam-cushioned instrument panel pad are included with this

interior along with padded sunshades, rubber floor covering and driver combination lap-shoulder belt.

Available Cheyenne interior.

New high-back front bucket seats are leather-grained. Custom vinyl in a selection of four colors. Custom cloth uphol-

stery in buckskin, red or blue is also available at no extra cost. The console between the seats, gage-type instrumentation with brushed bright metal trim and added insulation are included with Cheyenne. This interior also comes with color-keyed carpeting and special front door and rear sidewall trim panels.



STANDARD CUSTOM DELUXE INTERIOR.



AVAILABLE CHEYENNE INTERIOR.

New fold-up rear seat.

The full-width rear seat, available for all models, releases with two simple catches, folds up and locks in place behind the two front seats for faster conversion. If desired, the new rear seat can be completely

removed by unbolting three bolts. Also this year, the lowered floor in front of the rear seat provides considerably more leg room for rear seat passengers than last year's model.

All Blazers have the driver's high-back bucket seat standard.

An auxiliary high-back front bucket seat is available for Custom Deluxe, included with Cheyenne and Custom vinyl trim packages.



BLAZER POWER AND TOUGHNESS

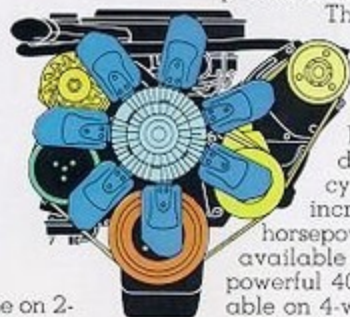
A word about engines.

The Chevrolet Trucks in this catalog are equipped with GM-built engines produced by various divisions. Please refer to the engine chart included in this catalog or available from your dealer for complete details about engine sources and availability.

Blazer engines: 250 Six standard. V-8s available.

The standard engine on 2-

and 4-wheel-drive Blazers is a 250-cubic-inch Six (350-4 V-8 required in California). Features include free-breathing valve-in-head design, hydraulic valve lifters and precision-balanced crankshafts.



The 305 2-barrel V-8 is available on all Blazers (350 4-barrel required in California). It has short-stroke design, full-jacket cylinder cooling. For increased torque and horsepower, the 350-4 V-8 is available on all models and a powerful 400-4 V-8 is available on 4-wheel-drive models.

High Energy Ignition.

Standard with both Six and V-8 engines, our High Energy Ignition delivers up to an 85% hotter spark than Chevy's previously used conventional systems. Solid-state design eliminates points and ignition condenser, helps provide quick starts and all-weather protection.



Choice of transmissions.

Match the Blazer engine you select with one of three available transmissions: the standard 3-speed fully synchronized unit (not available with 400 4-barrel V-8); the available 4-speed unit with floor-mounted shifter (not available with 400 4-barrel V-8); or the available automatic transmission.

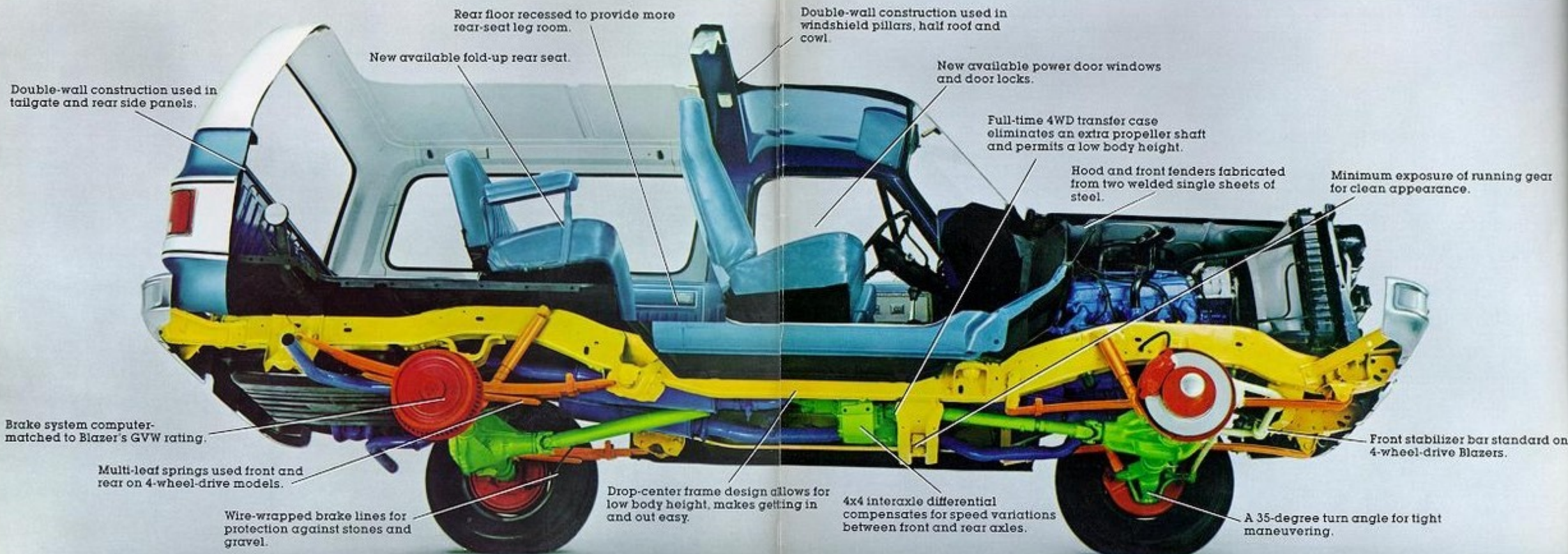


Corrosion protection.

The entire Blazer steel body, doors and tailgate are totally immersed in electrically charged primer—drawing paint into hidden seams and crevices for added corrosion protection. After the finish paint is applied and baked on, aluminum wax preservative is sprayed inside the cowl chamber, the door rocker panels and the lower portion of the doors. This year, galvanized steel is used in highly vulnerable areas like the radiator grille lower panel and front door glass channels.

Blazer tops.

All Blazers have a steel front half top and full doors. One-piece door opening frames help provide strength and tight door sealing. A removable fiberglass-reinforced plastic top encloses the rear area. A convertible model with folding rear top is also available.



BLAZER OPTIONS

Available performance equipment.

A great variety of available options enables you to tailor your Blazer to your specific on- and off-road requirements.

- A heavy-duty radiator, engine oil cooler, 61-amp Delcotron generator and heavy-duty battery—recommended for trailer towing.
- Cold Climate Package—includes Super Heater/Defroster and engine block heater.
- Thermostatic fan drive—runs only when needed.
- 31-gallon fuel tank—for greater cruising range.
- Towing hooks—mount to frame side members at front (4WD models only).



- Available steel shielding helps protect fuel tank over rough terrain. A transfer case protection plate is also available on 4WD models. Provides extra frame cross member.
- Locking rear differential—transfers power to wheel with most traction.
- Dual exhaust system—reduces back pressure.

For added comfort and convenience.



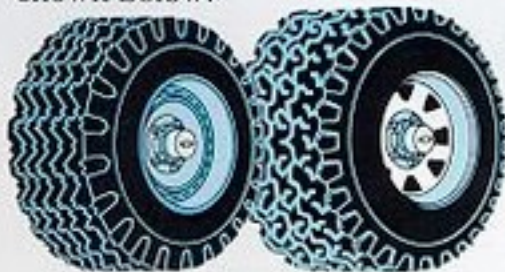
- Power windows—power door locks. New for 1978!
- Power steering.

- Comfortilt steering wheel—adjusts to six different positions.
- Speed and cruise control.
- All Weather air conditioning—heats, cools and dehumidifies.
- Soft-Ray tinted glass (except soft-top windows).
- Sliding side window glass—available for plastic top.
- Larger outside mirrors—two types available.
- Gage package—includes voltmeter, temperature and oil pressure gages.
- Tachometer or clock.
- Delco AM or AM/FM push-button radio.
- Rear radio speaker.
- Inside hood lock release.
- Rear window air deflector*.
- Intermittent windshield wipers.
- Luggage carrier*.

Available wheels and tires.

A number of different special tires can be ordered. Discuss your requirements with your Chevy dealer.

- Bright metal wheel covers.
- Rally wheels (at left) and styled wheels (at right) are shown below.



Available appearance options.

- Exterior Decor Package.
- Bright moldings and door edge guards.
- Special two-tone paint.
- Simulated wood-grained exterior trim.
- Deluxe front and rear chrome bumpers with impact strips.
- Deluxe instrument panel.
- Custom steering wheel.
- Front compartment headliner.
- Floor mats.

*Dealer installed.

Blazer Convertible.



A soft, vinyl-coated fabric convertible top fully encloses rear compartment, can be set in Safari position with side curtains rolled up, or can be lowered to leave rear compartment open.

A WORD ABOUT THE COMPONENTS AND OPTIONAL EQUIPMENT IN THESE CHEVROLETS:

The Chevrolets described in this brochure incorporate thousands of different components produced by various divisions of General Motors and by various suppliers to Chevrolet. From time to time during the manufacturing process it may be necessary in order to meet public demand for particular vehicles or equipment, or to meet federally mandated emissions, safety and fuel economy requirements, or for other reasons, to produce Chevrolet products with different components or differently sourced components than initially scheduled. All such components have been approved for use in Chevrolet products by Chevrolet Motor Division and will provide the quality performance associated with the Chevrolet name. With respect to factory-installed extra cost optional equipment, make certain you specify the type of equipment you desire on your vehicle when ordering it from your dealer. Before taking delivery of the vehicle, we suggest you verify that it includes the optional equipment that you ordered or if there are changes, they are acceptable to you.

BLAZER SPECIFICATIONS

COLORS

SERIES		C10—2-WHEEL DRIVE		K10—4-WHEEL DRIVE	
GVWR Range (lb)		6050		6200	
Availability		Standard	Available	Standard	Available
Engine		250-1*	305-2*, 350-4	250-1*	305-2*, 350-4, 400-4
Clutch Dia. (in)		11	**	11	**
Front Suspension	Type/Spring	Independent Coil Springs		Hypoid Driving Axle—Leaf Springs	
	Capacity (lb)	3250		3600	
	Spring Capacity (lb)	1525 ea.	—	1650 ea.	2250 ea.
	Shock Absorbers	1" dia.	1.38" dia.	1" dia.	32 mm dia. @
	Stabilizer Bar	—	1.05" dia.	1.25" dia.	—
Rear Suspension	Axle Type	Semi-Floating		Semi-Floating	
	Capacity (lb)	3750		3750	
	Ratios	4.11	3.07, 3.73, 4.11	4.11	2.76, 3.07, 3.40, 3.73, 4.11
	Springs—Type	Two-Stage Multi-Leaf		Two-Stage—Multi-Leaf	
	Spring Capacity (lb)	1700 ea.	—	1700 ea.	—
	Shock Absorbers	1" dia.	1.38" dia.	1" dia.	32 mm dia. @
Brakes	Disc/Drum	Power	—	Power	—
Electrical	Battery (watts)	2500	3200, 3500, 4000	2500	3200, 3500, 4000
	Generator (amp)	37	61	37	61
Fuel Tank	Nominal Cap. (gal)	25	31	25	31
Steering	Type	Manual	Power	Manual	Power
Transmission	Manual	3-Speed	4-Speed	3-Speed	4-Speed
	Automatic	—	Automatic	—	Automatic
Transfer Case		—	—	Conventional	Full Time
Tire Size, Tubeless		H78-15B	•	H78-15B	•
		• Larger size tubeless and tube-type tires available			

*Not available in California. Tire load range—B(4PR). In California, see your Chevy dealer for engine availability.

@ Only available with RPO F60 Heavy-Duty Springs. **12" clutch included with 350-4, 400-4 V-8 engines.

DIMENSIONS (inches)			
	2-Wheel drive	4-Wheel drive	2-Wheel & 4-Wheel drive
Wheelbase	106.5		Overall Length 184.4
Front Overhang	33.4		Overall Width 79.6
Rear Overhang	44.5		Box Length—Floor 76.6
Front Tread	64.8	66.7	Box Length—Upper 66.4
Rear Tread	63.4	63.7	Box Width—Floor 72.0
Ground Clearance	7.4	7.0	—Tailgate Opening 67.1
Height	69.8	72.0	—Between Wheelhousings 50.0
			Box Depth 19.5

TRAILERING SPECIAL						
GCWR in Pounds by Axle Ratio		8000	8500	9000	9500	10,500
Tires, Front & Rear	C-K10	H78-15B				
Transmission	C-K10	Automatic (all engines) or 4-Speed (350 V-8 only)				
Engine: 350-4 V-8	C-K10	3.07			3.73	4.11*
400-4 V-8	K10		3.07			3.73
GCWR Shown on Trailering Special Nameplate		8000				10,000

*Not available on K models.

†GCWR: Gross combined weight rating of vehicle, trailer, cargo and occupants.

All illustrations and specifications contained in this literature are based on the latest product information available at the time of publication approval. The right is reserved to make changes at any time in prices, colors, materials, equipment, specifications and models, and also to discontinue models. Chevrolet Motor Division of General Motors Corporation, Detroit, Michigan 48202. Litho in U.S.A.



Frost White



Mariner Blue



Buckskin



Mahogany



Hawaiian Blue



Santa Fe Tan



Red Metallic



Lite Blue



Colonial Yellow



Cardinal Red



Midnight Black



Saratoga Silver



Seamlust Green



Russet Metallic



Cordova Brown