

1986 FORD TAURUS





Taurus. An automobile that evolved from a new way of thinking.

Taurus, available in December 1985, is an automobile so unique and so in tune with real world transportation needs, that it will likely be the benchmark in automotive design for years to come.

A bold statement? Perhaps. But then perhaps not when you consider the logic that went into the Taurus design and the method with which that logic was carried out.

For instance, let's say you were about to design and build, not just another car, but an automobile that would have a profound impact on the automotive industry. Logically, you would want it to achieve high marks in quality and product integrity. You would want it to be equal to or better than anything in its class. And, of course, you wouldn't limit your comparisons to just American-made products.

This is exactly what the engineers at Ford have done with Taurus.

The Taurus design encompasses a "best in class" philosophy. A philosophy that identified over 400 of the best features available on competitors' automobiles around the world — from sports cars to luxury sedans.

Once identified, specific targets were selected and objectives were set to meet or exceed them. When the designers and engineers were finished, the results were researched and tested using the most demanding sources available — you, the buying public.

Time will bear out the significance of the Taurus accomplishment. But one thing is certain now; Taurus is more than just another car. It is a philosophy that will make other cars in its class obsolete by comparison.

Contents

Inside Taurus	12-13
Ford Taurus LX	14-15
Ford Taurus GL	16-17
Ford Taurus MT5	18-19
Ford Taurus L	20-21
Ford Taurus LX Wagon	22-25
Ford Taurus GL Wagon	26-27
Ford Taurus MT5 and L Wagons	28-29
Standard Features	30-31
Ford Performance	32-33
Preferred Equipment Packages	34-35
Features, Options, Colors and Trims	36-37
Safety and Owner Information	38-39

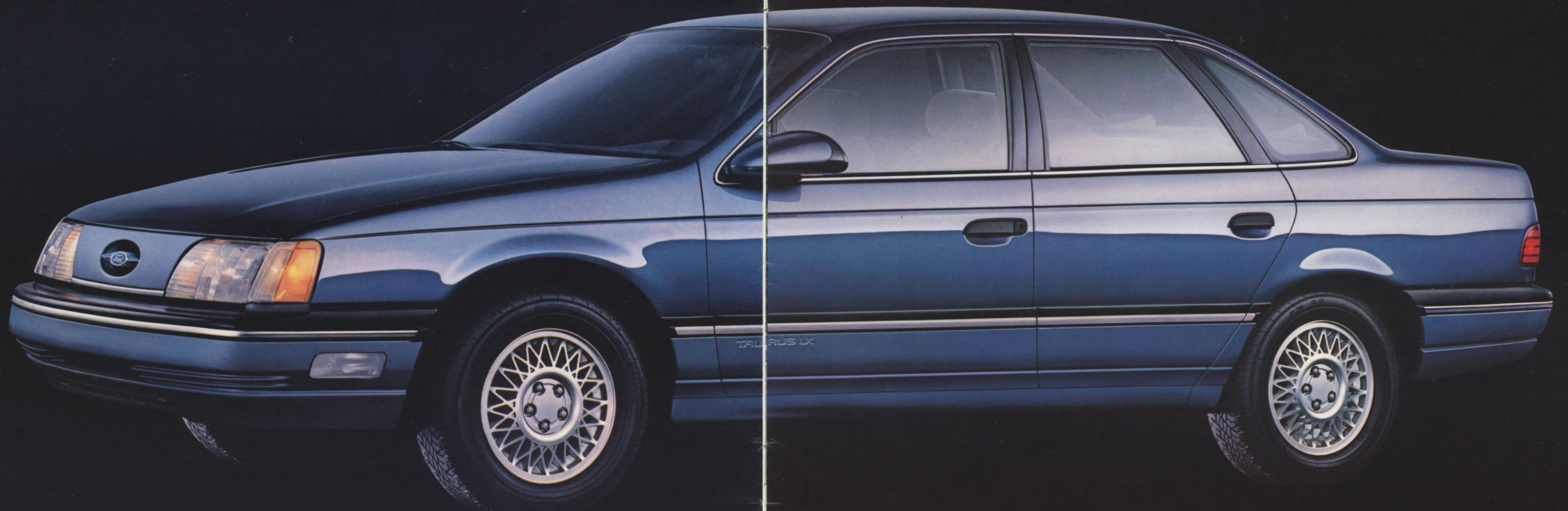
Taurus LX Sedan shown in Medium Grey Clearcoat Metallic. Some equipment shown may be optional. See options list on page 37.

FORD TAURUS LX



Taurus LX Sedan shown in Silver Clearcoat Metallic. Some equipment shown may be optional. See options list on pg. 37.

FORD TAURUS LX



*Taurus LX Sedan shown in Med.
Regatta Blue Clearcoat Metallic.
Some equipment shown may be
optional. See options list on pg. 37.*



Taurus LX Sedan interior shown in Medium Grey. Some equipment shown may be optional. See options list on page 37.



Taurus command center. Some equipment shown may be optional. See options list on page 37.

INSIDE TAURUS

All do-it-yourself fluid checks (oil level, power steering fluid, etc.) are arranged in the front of the engine. They are also color-coded to make them easy to find, easy to check, and some include tethered caps.

A new multiple port fuel-injected V-6 engine designed for simplicity and responsiveness. Plus a new 4-speed automatic transaxle so well designed that under normal use it requires no scheduled maintenance.

20-inch windshield wipers clear all the way to the driver's roof pillar to aid visibility.

Flush glass all around aids aerodynamic efficiency, reduces interior wind noise and adds to overall design.

Front seat head rests adjust up and down, forward and back. Seat belts are simple to use, comfortable to wear.

Child-proof rear door locks. Plus 37 other Lifeguard design safety features.

A covered storage compartment holds magazines, and other personal items neatly out of the way.

The LX, GL, MT5 sedans and wagons include an elasticized cargo net to secure smaller loads and keep them from rolling about.

The hood features gas-charged struts which assist you to raise the hood and hold it open without a prop rod.

Permanent set front alignment (caster and camber); no routine adjustment needed.

Lower bodyside cladding on LX and urethane protection on other series help Taurus ward off the damaging effects of loose gravel and/or road salt.

Taurus was designed from the inside out.

What this means is that the functional requirements of driver and passengers were established first. And only then did the rest of the Taurus form take shape.

Operator controls for instance, were ergonomically designed and placed for optimum driver convenience.

One example: controls that operate power options feature a tactile design that allows the driver to actuate the controls by feel; your eyes can stay on the road.

Taurus seats are designed to minimize fatigue during prolonged driving or riding situations. Their final design is the result of over three years of testing and over 110,000 developmental miles.

When viewing Taurus from the outside, a number of striking aspects about its design are obvious.

Most notable is the sleek, aerodynamic shape that is unmistakably Ford. In fact, Taurus, the latest form-follows-function shape from Ford, is one of the most aerodynamically efficient 6-passenger sedans built in America.

But deeper than that, below smooth contours and shiny skin, is function and attention to detail that go far beyond the norm.

There are countless other areas where function played the leading role, both inside and out. Shown here are just a few of them.

Rear seat passengers have their own heat and fresh air ducts. Plus 16 1/4" spacing between seat tracks and slanted floor for extra foot room and balanced comfort.

The Taurus sedan 4-wheel independent suspension system uses a true MacPherson design with gas-pressurized struts front and rear.

Exhaust system components with the 3.0 liter V-6 engine feature stainless steel construction.

The 5-mile-per-hour front and rear polycarbonate bumpers are shaped to help manage the flow of air around and under the car. They are resilient, rust proof, scuff-resistant and smooth with no sharp edges.

A truly remarkable 6-passenger sedan

One glance at Taurus won't be enough to satisfy your curiosity. And that's good because we want you to look twice. Look closely. Taurus LX is a truly remarkable car.

The exterior is beautifully sculptured. To help maintain that beauty, the lower bodysides of LX include special moldings called "cladding." The cladding and rocker panel moldings add to the looks of LX and help protect those parts of the body that are closest to the road.

Passenger comfort

Select either split bench front seats or buckets with console and get luxury cloth in a unique sew style. The seat backs recline and include inner inflatable lumbar supports. And the head rests are adjustable four ways.

To ensure rear passenger comfort, rear heating ducts are provided. The rear seat also includes a fold down center armrest and integral head rests. The rear window ledge has a built-in covered storage compartment and the front seat backs include map pockets.

Driver convenience

For driver convenience, LX includes tilt steering column, interval wipers, and the Light Group. Power Lock Group, dual electric remote control mirrors and power side windows are also standard and are operable from a control panel with tactile controls integrated into the door panel (see pages 10-11).

Air conditioning, tinted glass, an electronic search AM/FM stereo radio with four speakers, dual illuminated visor mirrors — they are *all* part of Taurus LX.

The trunk and fuel door releases are conveniently located at your fingertips between the driver's door and seat. And both releases are lockable. There's even a luggage compartment convenience kit which includes such handy items as a 7-in-1 fluorescent lantern, tire gauge, cotton gloves, vinyl poncho and other items.

We've put a lot into LX. Even more than is listed here. (See page 37 for a more complete listing). But again, if you were building a luxury 6-passenger sedan, wouldn't you do the same?

Above left: Taurus LX Sedan in Silver Clearcoat Metallic.

Far left: Taurus LX Sedan in Medium Regatta Blue Clearcoat Metallic.

Center: The Taurus climate control system utilizes rotary dials with positive shut-off air registers.

Left: The illuminated passenger side visor mirror is designed so that it can be pulled down and adjusted close to the face.

Some equipment shown may be optional. See options list on page 37.



FORD TAURUS GL

Designed for people just like you



Taurus is a bold new design. But it was designed around people. Around you. So it should fit you to a tee.

Taurus GL Sedans offer many of the same luxuries afforded in the top line LX series. Take your choice of split bench seats or bucket seats with center console. The seat backs of both recline and include map pockets. And the front head rests are adjustable four ways.

Passengers in the back have a fold down center armrest, integral head rests and heat ducts at their feet. The

window ledge includes a covered storage compartment. It's in the right place and just the right size (for magazines perhaps or a first aid kit).

Additional convenience items are visor mirrors (covered on the driver's side), dual electric remote control mirrors, electronic search AM/FM stereo radio with four speakers, tinted glass, interval wipers, electronic digital clock, trip odometer and reminder chime.

An all-new powertrain

Taurus GL and LX Sedans are powered by an all new 60-degree 3.0 liter electronically port fuel-injected V-6 engine. It is transverse-mounted for front-wheel drive and sure-footed traction under varying weather conditions. For convenience, the V-6 engine is coupled to an automatic transaxle, the latest version of Ford's Automatic Overdrive. For efficiency, the transaxle has four forward speeds with an overdrive fourth gear. For low-cost operation, it requires zero scheduled maintenance.

Ford Taurus GL. Size one up at your Ford Dealer soon. See just how well it fits your lifestyle.

Right: Taurus GL Sedan in Medium Regatta Blue Clearcoat Metallic.

Above left: The split bench seats shown in Midnight Blue, give individual comfort with reclining seat backs.

Below left: The rear window ledge storage bin has a magnetic latching cover.

Some equipment shown may be optional. See options list on page 37.



FORD TAURUS MT5

A taste of performance. A touch of class.

The Taurus MT5 Sedan is a perfect blend of driving fun and luxury in a world class touring car.

The inherent characteristics of the fuel-injected 2.5 liter overhead cam 4-cylinder engine give it high torque at low speeds, thus making it very responsive in city-type driving conditions. And the manual 5-speed makes it an even more capable performer on the highway.

Inside MT5 you are treated to the seating comfort of bucket seats with high density foam cushions on flat, spring steel Flex-o-lator mats. The seat backs were designed to recline in $\frac{3}{4}$ degree increments for near-infinite adjustment. There are also map pockets on the seat backs and 4-way adjustable front head rests.

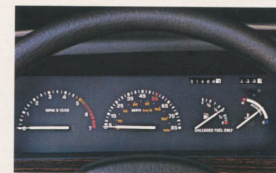
The center console provides many convenient features. It has a padded folding armrest that opens to a storage pod with twin compartments for small items. The console also includes a removable black vinyl mat, depressions for beverage containers, a slotted coin holder, touch-to-open ashtray and a rear seat courtesy light.

Left: Taurus MT5 Sedan in Black

Above right: The MT5 performance interior shown in Sand Beige, with bucket seats, console and 5-speed manual transaxle.

Right: MT5 instrumentation. Speedometer, tachometer, temperature gauge, trip odometer and upshift indicator light.

Some equipment shown may be optional. See options list on page 37.



Driver conveniences include a luxury steering wheel, interval wipers, an upshift indicator light, tachometer, trip odometer and a secondary driver's visor (also standard in LX and GL) that allows you to cut off the sun from the front and the side at the same time.

Taurus MT5. Performance, comfort and convenience in a world class 5-passenger sedan.

FORD TAURUS L

A new dimension in 6-passenger travel

The L Series Taurus, like all Taurus models, has an exterior shape that manages air flow better than many famous sports cars. And inside, it has the most ergonomically-designed interior in its class. That is an outstanding achievement for any automobile. It is even more outstanding when you stop to consider that Taurus offers room and comfort for six passengers.

The L Series Sedan is the platform for the entire Taurus model line. And as such, Ford engineers made certain that it provided a solid beginning.

Taurus L includes power rack and pinion steering and power front disc/rear drum brakes. It has 4-wheel fully independent suspension with gas-pressurized struts and shocks for a smooth, controlled and luxurious ride. And front wheel drive along with exclusive all-season steel-belted radial tires give it sure-footed traction.

Driver oriented controls

The instrument panel is backlit and has a swept-away design that places all controls and instruments within easy reach and in clear view so the driver's

Interior comfort and convenience

The cloth-covered front flight bench seat features full Flex-o-lator construction and ample room for three, or two when the center armrest is folded down. You also can select the sportiness of front bucket seats as a no charge option. Seats are covered with new tri-laminate fabrics that provide excellent fit. Door trim panels feature matching cloth inserts, padded armrests and molded, lined map pockets.

For safety, all doors include high-visibility reflectors that alert oncoming traffic to an open door condition. The front doors have lights that are positioned to illuminate the curb or roadside to aid entry and exit. And all doors actuate the interior courtesy lights. Rear doors include child-proof door locks that prevent inadvertent opening from the inside.

The extent to which Ford designers and engineers went in producing a new kind of passenger car is overwhelming. The attention to the smallest detail is what sets Taurus apart from the rest. You'll notice the difference from the outset. And we think it is a difference you'll like.

Ford Taurus L. A new dimension in the world of 6-passenger travel.

*See gas mileage on page 33.



Equipped for efficient, carefree operation

Aside from the efficiency* afforded by the 2.5 liter 4-cylinder and 3-speed (CLC) automatic transaxle, Taurus L provides amenities that make driving and riding equally enjoyable experiences.

eyes can stay on the road. The conveniently located fuse box swings down into view and includes spare fuses. A multi-function control on the steering column provides fingertip access to turn signals, wipers/washers, high beam and flash-to-pass. Also provided are side window demisters that operate in all climate control modes.

Right: Taurus L Sedan in Driftwood Clearcoat Metallic.

Above left: Taurus L instrument panel with driver-oriented design.

Some equipment shown may be optional. See options list on page 37.



FORD TAURUS LX WAGON



*Taurus LX Wagon in Oxford White.
Some equipment shown may be
optional. See options list on pg. 37.*

FORD TAURUS LX WAGON

There never has been
a wagon quite like this one.

When the engineers at Ford first set out to redesign the standard of American wagons, they had only an idea of what the final shape might look like. They let form follow function and the result, as you can see, is quite impressive. The clean, flush appearance of the glass, the uniquely shaped rear panels, make Taurus a wagon you *want* to be seen in.

The ultimate Taurus Wagon

Taurus LX Wagon, like the sedan, is top-of-the-line in every respect. Interior materials are more luxurious. The carpeting is thick. The sound insulation is heavy. And of course, there are quite a few comforts and conveniences placed at your fingertips.

On the performance side of LX Wagons is the 3.0 liter 60-degree V-6 engine with electronic multiple-port fuel injection teamed with a 4-speed automatic transaxle with overdrive.

The 3.0 liter V-6 is one of the simplest and most reliable engines in the industry with over 1,000,000 miles of combined prototype testing behind it.

Left: Taurus LX Wagon in Silver Clearcoat Metallic

Above center: The optional fold-out picnic table is yet another example of Taurus' attention to your lifestyle.

Above right: Taurus LX Wagon interior in Medium Grey

Some equipment shown may be optional. See options list on page 37.



A roomy, comfortable interior that is also functionally pleasing

Taurus LX Wagon's front split bench seats provide ample room for three. Both seat backs recline and include a power inflatable lumbar support. The rear seat is a 60/40 split fold-down design that allows extra flexibility for carrying cargo or people.

For driver operating convenience, Taurus LX is equipped with interval windshield wipers, dual electric remote control mirrors, tilt steering column, power side windows and power locks. Cornering lamps, an automatic parking brake release and the Light Group are additional driver conveniences.

For comfort and convenience, Taurus LX also includes air conditioning, tinted glass, secondary visors for driver and right-hand passenger and dual illuminated visor mirrors. An electronic search AM/FM stereo radio with four speakers is also standard. The rear speakers are integrated into the headlining for good listening even when the cargo area is loaded.



The fully carpeted cargo compartment comes with integral cargo tie-downs in the load floor and a handy cargo net that can be used to secure loose packages like grocery bags or the kids' toys. There's also a cargo compartment convenience kit (see page 15).

If you'd care to see what the wagons of the future are going to be like, you could wait for someone else to make one. Or, you could visit your Ford Dealer today.

FORD TAURUS GL WAGON

Changing the way America thinks about wagons

Taurus GL Wagon is equipped to cope with the activities normally associated with your more typical wagon, as well as those that are not.

First of all, the powerteam consists of the advanced 3.0 liter multiple port fuel-injected V-6 engine and 4-speed Automatic Overdrive transaxle for responsive city driving and efficient* highway cruising.

The split bench front seats are equipped with dual recliners and 4-way adjustable head rests.

For the versatility required of a multiple-use vehicle like a station wagon, the rear seat, as in all Taurus wagons, is a "60/40 split-fold" version. The benefit of the 60/40 design is that it provides comfortable seating for two passengers while allowing you to lower a portion of the seat for long cargo (skis for example).

The cargo carrying capability of Taurus is quite impressive: it has an 81.0 cubic foot EPA cargo volume index with the second seat backs folded down. The load floor and second seat backs are also carpeted.

There is an additional locking storage compartment under the rear load floor for tools or small packages. And handy cargo tie downs are designed into the floor for securing rear loads.

There are a lot more interesting and useful ideas incorporated into this newest of American wagons. See them for yourself and you'll see that Ford is setting the pace in wagon advancements.

*See gas mileage on page 33.



Right: Taurus GL Wagon in Black

Above: Taurus' cargo area officially measures 81 cubic feet. That translates into space for quite a bit of luggage.

Left: For additional seating, order the optional rear-facing third seat.

Some equipment shown may be optional. See options list on page 37.



FORD TAURUS MT5 WAGON

A wagon for active lifestyles

The real beauty of Taurus lies in its functionality and not just in its impressive looks. In other words, it's not just a nice looking wagon. There is function at every turn. From the dynamic design with front aero-style halogen headlamps, to the rear license plate light housing that is designed to serve as a handle for the liftgate as well.

The luggage rack, standard on all Taurus wagons, is part of the dynamic design. It is shaped to manage the wind as efficiently as the rest of the Taurus body. And it's constructed of plastic, so it won't corrode.

The MT5 Wagon comes with the sporty attributes of the MT5 Sedan including the 2.5 liter fuel-injected engine and 5-speed manual transaxle.

The sportiness continues inside with bucket seats and center console. A tachometer, trip odometer and upshift indicator light are added to the instrumentation.

Left: Taurus MT5 Wagon in Sand Beige.

Above right: The standard Taurus L Wagon comes with all the thoughtfulness of the L Series sedan plus the versatility of a wagon.

Below right: The rear window of Taurus can be opened independently of the liftgate for convenient small package handling.

Some equipment shown may be optional. See options list on page 37.



The 60/40 split fold-down second seat has button releases that are thoughtfully placed high on the outboard sides of the seat, making it easy to lower the seat backs from outside the car. The second seat backs and inner liftgate panel are carpeted, too, completing the well-tailored look of the rear cargo area.

The two-way liftgate offers a wide opening that extends from bumper to roof and wall-to-wall. The liftgate window also can be opened separately for convenient small package loading and unloading.

Taurus MT5 Wagon. A thoughtful rendition of the new American wagon.



STANDARD FEATURES

Standard features as distinctive as the car itself

Ford Taurus, equipped to make life more enjoyable

The "best in class" philosophy that provided the guidelines for the Taurus platform went deeper than comparisons with other automobiles. It identified many of life's little annoyances as related to driving and took positive steps toward eliminating them or, at the very least, making them more bearable.

This page illustrates a few of these areas where Taurus stands apart from the competition.

Door panel power controls

Power door locks, power windows and dual electric mirrors, all standard in Taurus LX models, feature an ergonomically designed control panel mounted in the door. The controls incorporate a tactile system that actually allows the operator to feel the desired mode without taking his eyes from the road. It's a simple set-up that uses a raised bump for "up" or "on" and a hollowed indent for "down" or "off."

The controls for the dual electric mirrors are a "joystick" system. They are positioned at the top of the vertically mounted door pull handle and can be easily operated by the thumb. A center "off" position for the mirrors has been included to prevent inadvertent movement.

Cargo tie-down net

This very thoughtful feature is standard in MT5, GL, and LX sedans and wagons. It is a cargo restraining net that secures loose packages or grocery bags and helps keep them upright and protected from tipping over.

Dual sun visors

How many times have you been on a winding road on a bright sunny day and had to continuously swing your visor from side-to-side to block the sun? Taurus GL, MT5, LX sedans and wagons incorporate a unique secondary visor for the driver and, on LX, there's one for the right-hand passenger as well. It's a thoughtful innovation that lets you screen the sun from the front and side at the same time, acknowledging once and for all that all roads do not run in a straight line.

Luggage rack

Since most station wagons are inevitably used to carry something that won't fit easily into the rear cargo area, we've made the luggage rack standard equipment on all Taurus wagons. We've constructed it of high strength plastic so it won't break and will never rust. We designed the rear cross bar to adjust front-to-rear and even included six adjustable, integral flip-up tie-downs to help in securing the load.

Full-width seat track release bars

Normally, moving the front seat forward and back is a two-hand operation. And most of the time it's an awkward operation at best. Taurus front seats feature an 11-inch wide bar making it an easy matter to adjust the seat with either hand, from inside

or outside the car. Another small convenience feature that is standard on all Taurus models (of course, it's not necessary with power seats).

Front door curb lights

Every Taurus is equipped with front door curb lights incorporated into the door panels just below the armrests (see page 9). Open the door and the area you are about to step into is illuminated. Not only do they help you to see, but they, in addition to reflectors on all four door panels, also serve to warn approaching traffic that your door is open.

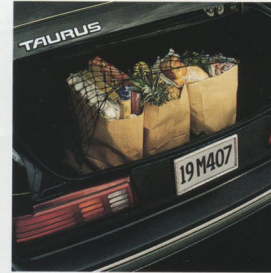
Seat belts that are "user friendly"

When you buckle up in the front seat of Taurus, the seat belt stays in adjustment no matter where the seat is positioned. It doesn't tighten when the seat is moved forward and it won't loosen when the seat is moved back. This is because Ford anchored the belts to the seat tracks. A simple but thoughtful idea. In addition, Taurus seat belts incorporate plastic covered buckles that stay cool in a hot car and have top-mounted releases for easy one-hand operation.

Flush glass all around

The clean, flush appearance of the Taurus "greenhouse" is as functional as it is visually appealing. It is an integral part of the overall dynamic design that contributes to air flow management by reducing turbulence. Reduced turbulence means less interior noise.

There are countless items like these throughout Taurus. Some so small and inconspicuous that you might not notice them unless they were pointed out. But they are there. In virtually every rounded corner.



Ford performance over the road and under the hood

Handling characteristics that provide confidence and comfort

The excellent handling characteristics of Taurus are the result of a combination of front and rear suspensions, steering, and dynamic shape.

4-wheel independent suspension

The front suspension system of Taurus sedans and wagons uses the MacPherson design with gas-pressurized struts and stabilizer bar.

The sedan rear suspension system is a parallel-bar full MacPherson design and it is fully independent. Independent rear suspensions provide better ride and handling characteristics than a solid mono-beam type system because the wheels can negotiate bumps individually.

Taurus wagons incorporate a unique "short/long arm" (SLA) independent rear suspension set-up to achieve comparable sedan ride characteristics while at the same time maximizing usable interior cargo room.

There are 7.7 inches of travel built into the front suspension and 9.7 inches (9.2 in wagons) in the rear so Taurus can comfortably handle large bumps and potholes without bottoming out.

Ford Taurus dynamic design

The Taurus shapes, sedan and wagon, are the products of intensive wind tunnel testing. The total number of hours and tests performed are the most ever for a Ford vehicle. The result is an efficiently managed air flow system that actually uses the

wind to improve handling. Even the bumpers and luggage rack (wagons) are designed to manage the air.

Through careful fine-tuning of selected design areas, air flow is directed over and around the body to reduce front and rear lift for directional stability.

The clean sweep of flush glass and "shingled" wrapover door design with concealed drip moldings reduce turbulence around the passenger compartment adding to a quiet interior ride.

Sophisticated powerteams for efficiency and response

The advanced engines that power Ford Taurus feature the latest in Ford powerteam technologies. Both the 2.5 liter 4-cylinder and 3.0 liter V-6 engines were created specifically for Taurus.

2.5 liter 4-cylinder

The 2.5L engine is an in-line 4-cylinder with overhead valves and high-swirl, fast-burn combustion chamber design.

Special features of the combustion chamber combine to produce a fast, efficient burn rate of the air/fuel mixture. The modified wedge-shaped combustion chambers are designed with a squish area that concentrates the compressed volume near the center of the chamber where the spark plug is located. A special shroud is built into the induction system at the intake valve that creates a pronounced swirling motion in the incoming fuel charge. The swirling motion of the charge produces a fast burn without premature detonation, extracting

more power from each fuel droplet.

The 2.5L engine and 3-speed automatic transaxle with centrifugally locking clutch are standard on L series sedans. The 5-speed manual transaxle is standard on the MT5 Sedan and Wagon.

3.0 liter V-6

Combustion chamber and intake valve port designs of the 3.0L engine were developed using input from Ford's European resources and computer-aided technology. The process included the selection and testing of 12 different designs to determine the optimum configuration for high specific output and low specific fuel consumption.

The induction system on the 3.0L V-6 is electronically controlled multiple-port fuel-injection that delivers a precise amount of fuel to the intake valves for good fuel mixing during the intake process.

The 3.0L V-6 engine is teamed with the 4-speed Automatic Overdrive transaxle and is standard in the GL and LX Sedan and L, GL and LX Wagon models. It is available as an option in the L Sedan.

Taurus powerteams

Engines	Transaxles	Final transfer ratios		
		49-states	Calif.	Altitude
2.5L	5-speed	3.33	3.33	3.33
2.5L	Automatic	3.23	3.23	3.23
3.0L	A00	3.37	3.37	3.37



The configuration selected was a twin-squish compact chamber with a centrally located spark plug. Locating the spark plug in the center of the wedge shaped chamber allows a high compression ratio of 9.25:1 using regular unleaded fuel.

Gas mileage

1986 EPA mileage estimates were not available at the time this catalog was approved for printing. As soon as EPA figures are released, your Ford Dealer will be among the first to receive this information and will be happy to pass it along to you.

Left: Taurus MT5 Sedan in Black. Some equipment shown may be optional. See options list on page 37.

A WELL-EQUIPPED CAR

The **Taurus GL Sedan** pictured below illustrates the high level of equipment in this series. Included is Preferred Equipment Package 204A, with the kinds of features that have proved popular with many car buyers.



Taurus GL Sedan (with Preferred Equipment Package 204A)

- Front-wheel drive
- 4-wheel independent suspension
- Gas-filled shocks and struts
- Front stabilizer bar
- 3.0L EFI V-6 engine and 4-speed Automatic Overdrive transaxle
- Power rack and pinion steering

- Power front disc/rear drum brakes
- Dual electric remote control mirrors
- Electronic AM/FM stereo search radio with 4 speakers
- Split bench front seats with fold-down center armrests and dual recliners or bucket seats with dual recliners and center console (your choice)
- 4-way adjustable front head rests
- Courtesy light switches on all

- four doors
- Carpeted deep-well luggage compartment with mini-spare tire stowed under flat load floor
- Luggage compartment light
- Electronic digital clock
- Tinted glass, complete
- Seat back map pockets
- Rear seat fold-down armrest
- Rear window ledge storage bin
- Dual visor mirrors

- Secondary visor for driver's front and side protection
- Air conditioner
- Rear window defroster
- Lock Group
- Speed control
- Tilt steering column
- Paint stripe (may be deleted)
- Power side windows
- 6-way power driver's seat
- Styled road wheels

PREFERRED EQUIPMENT PACKAGES

Ordering your **Taurus Sedan or Wagon** is easy with Preferred Equipment Packages. Here's how it works: (1) Choose your body style (sedan or wagon). (2) Select the Preferred Equipment Package with the features you want from the charts below.

Preferred Equipment Packages contain groups of optional items of

Taurus L Sedan and Wagon	Packages	
	201A	202A
3.0L V-6 and AOD transaxle(1)	•	•
Exterior Accent Group(2)	•	•
Air conditioner	•	•
Electronic digital clock	•	•
Rear window defroster(3)	•	•
Tinted glass, complete	•	•
Dual electric remote control mirrors	•	•
Rocker panel moldings	•	•
Electronic search AM/FM stereo radio	•	•
Reclining passenger seat	•	•
Interval windshield wipers	•	•
Light Group(4)	•	•
Lock Group(5)	•	•
Speed control	•	•
Tilt steering column	•	•
Paint stripe (may be deleted)	•	•
P205/70R14 BSW tires	•	•
Power side windows	•	•

Taurus GL Sedan and Wagon	Packages	
	204A	205B
Air conditioner	•	•
Rear window defroster(3)	•	•
Lock Group(5)	•	•
Speed control	•	•
Tilt steering column	•	•
Paint stripe (may be deleted)	•	•
Power side windows	•	•
6-way power driver's seat	•	•
Styled road wheels	•	•
Cornering lamps	•	•
Illuminated Entry System	•	•
Dual illuminated visor mirrors	•	•
Remote fuel door release	•	•

Taurus LX Sedan and Wagon	Packages	
	207A	208A
Rear window defroster	•	•
Electronic search AM/FM stereo radio with cassette tape player	•	•
Premium Sound System	•	•
Speed control	•	•
Paint stripe (may be deleted)	•	•
6-way power driver's seat	•	•
Styled road wheels	•	•
Illuminated Entry System	•	•
Leather-wrapped steering wheel	•	•
Electronic climate control air conditioner	•	•
Autolamp System	•	•
Front and rear floor mats	•	•
Extended range fuel tank	•	•
Electronic instrument cluster	•	•
Keyless Entry System	•	•
Power radio antenna	•	•

Taurus MT5 Sedan and Wagon	Packages		
	211A	212A	213A
Air conditioner	•	•	•
Rear window defroster(3)	•	•	•
Light Group(4)	•	•	•
P205/70R14 BSW tires	•	•	•
Remote fuel door release	•	•	•
Lock Group(5)	•	•	•
Power side windows	•	•	•
Speed control	•	•	•
Leather-wrapped steering wheel	•	•	•
Tilt steering column	•	•	•
Paint stripe (may be deleted)	•	•	•
Styled road wheels	•	•	•
Autolamp System	•	•	•
Cornering lamps	•	•	•
Front and rear floor mats	•	•	•
Extended range fuel tank	•	•	•
Illuminated Entry System	•	•	•
Diagnostic alert lamps	•	•	•
Dual illuminated visor mirrors	•	•	•
Electronic search AM/FM stereo radio with cassette tape player	•	•	•
Premium Sound System	•	•	•
6-way power driver's seat	•	•	•

(1) Standard on wagons.
 (2) Includes bright and black windshield moldings (all models) and rear window moldings (sedan only); bright and black belt moldings; bright door and quarter window surround moldings (sedan only); black-out treatment "B" pillars (all models) and "C" pillars (sedan only).

(3) Premium Sound System is an allowable substitution in packages 201A, 202A, 204A, 211A and 212A.
 (4) Includes dual beam map light with specially designed aircraft-type black beam that won't distract the driver; engine compartment light; courtesy light under instrument panel; headlamps "ON" reminder buzzer or chime.
 (5) Includes power door locks and on sedans, a mechanical lockable decklid release.



Ford Motor Company strongly encourages all passengers to use their safety belts.

In all Ford cars, outboard front seat lap and shoulder belts have automatic retractors and comfort regulators. Outboard rear seat positions also have lap belts with retractors.

Ford urges the use of child and infant restraints, as required in all states. Ford's easy-to-install Tot-Guard (for children 20 to 50 pounds) and Infant Carrier (for children up to 20 pounds) are available at all Ford Dealers. If a child restraint requires a top-tether, Ford cars provide for attachment of an anchor at each rear outboard seating position, and all three rear seating positions in the case of Taurus.

Ford Lifeguard Design Safety Features

Vehicle operation

- Safety rim wheels and load-rated tires
- Split service hydraulic brake system with warning light
- Corrosion-proof brake lines
- Flash-to-pass headlamps
- Turn indicator lever with lane-changing signal feature
- Hazard warning flasher
- Backup lights
- Side marker lights
- Parking lights coupled with headlamps
- High-mount brake lamp
- Two-speed or variable speed windshield wipers
- Windshield washers
- Dual outside rearview mirrors (except L sedan)
- Glare-reduced instrument panel, windshield wiper arms and windshield pillars
- Uniform transaxle shift quadrant (on all cars equipped with automatic

transaxles) Continuously variable control illumination intensity (instrument panel lighting) Safety hood latch system Function-rated windshield defroster system

Occupant protection

- Safety-designed front end structure
- Safety-designed roof structure
- Steel guard rails in side doors
- Double yoke safety door latches and safety hinges
- Integral lap and shoulder belts with automatic retractors for front outboard occupants
- Lap belts for center front occupant (where 3-passenger front seat is provided)
- Positive seat belt fastening reminder warning light and buzzer or chime for the driver's seat
- Lap belts with retractors for outboard occupants of the rear seat



Special quality steps: Corrosion protection

Ford takes tough measures to protect Taurus against the damaging effects of corrosion. Galvanized steel is used for important underbody and structural parts. Pre-coated steel, featuring corrosion inhibitors, is also used in major body panels. Special treatments are applied to selected areas of the body structure including urethane coating or cladding on the lower bodyside and painting of select underbody chassis components.

Scheduled maintenance

Here are some examples of scheduled maintenance intervals for the 1986 Taurus. For complete maintenance recommendations, refer to the Taurus Owner Guide.

Engine oil change	each 7,500 miles
Spark plug change	each 30,000 miles
Air filter replacement	each 30,000 miles
Engine coolant replacement	each 30,000 miles or 3 years

- Energy-absorbing armrests and safety-designed door handles
- Energy-absorbing instrument panel with padding for right and center front passengers
- Energy-absorbing sun visors
- Energy-absorbing front seat back tops with padding
- Head restraints for front seat outboard occupants
- Safety glove box latch
- Inside yieldaway rearview mirror
- Impact-absorbing laminated safety glass windshield
- Flame resistant interior materials
- Safety-designed coat hooks
- Safety-designed radio control knobs and push buttons
- Child-proof rear door locks

"Ask your Ford Dealer"

Following publication of this catalog, certain changes in standard equipment, options, prices and the like, or product delays, may have occurred which would not be included in these pages. Your Ford Dealer is your best source for up-to-date information.

SAFETY AND OWNER INFORMATION

Measurements

	Sedan/Wagon
Wheelbase 106.0"/106.0"
Length 188.4"/191.9"
Height 54.3"/55.1"
Width 70.7"/70.7"
Tread: front 61.6"/61.6"
Tread: rear 60.5"/59.9"
Trunk or cargo volume (cu. ft.) 17.0/81.0
Fuel capacity* (gal.) 16.0/16.0
Curbs weight (lb.) 2,863/3,165
Passenger capacity** 6/6

*18.6 gal. with optional Extended Range Tank.
**5 with bucket seats. Eight in wagons (except MT5) with optional rear facing third seat.

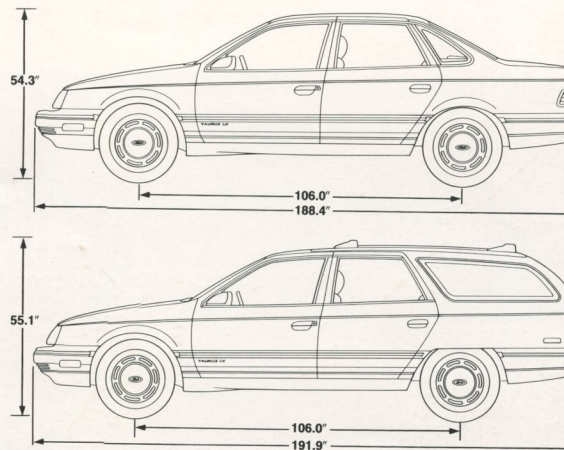
5-mile-an-hour bumpers

Bumpers on Taurus are designed to protect lamps, cooling system, exhaust and other body components in the event of a minor impact. While some manufacturers equip their cars with bumpers that just meet the 2½-mph federal standards, Ford equips Taurus and every other car it makes with bumpers designed to absorb impacts of 5-mph.



Participating Ford Dealers are now offering the Lifetime Service Guarantee, which guarantees their work on your Ford vehicle for as long as you own it. This means that the covered repair is paid for once — and never again. If it ever has to be fixed again, the repairing dealer will fix it free. Free parts. Free labor. Even if the car is kept a lifetime. It doesn't matter where it was purchased, or whether it was new or used; the work is still covered by the repairing dealer.

This limited warranty covers vehicles in normal use. Items not covered are routine maintenance parts, belts, hoses, sheet metal and upholstery. Ask to see this guarantee when you visit your participating Ford Dealer.



The optional Extended Service Plan covers major components on new Ford cars and light trucks for longer than the vehicle's basic warranty. The cost of this added protection is so moderate that it could pay for itself the first time you need it. Your Ford Dealer has full details.



Genuine Ford and Motorcraft original equipment replacement parts meet the same high standards as those installed in production. They are your best assurance of quality and long-term satisfaction.

Ford-paid repair programs after the warranty period

Sometimes Ford offers adjustment programs to pay all or part of the cost of certain repairs. These programs are intended to assist owners and are in addition to the warranty or to required recalls. Ask Ford or your dealer about such programs relating to your Ford or Lincoln-Mercury vehicle.

To get copies of any adjustment program for your vehicle or the vehicle of interest to you:

Call Ford toll-free at 1-800-241-3673. Alaska/Hawaii call 1-800-241-3711 and in Georgia call 1-800-282-0959.

Or write Ford at:

Ford Customer Information System
Post Office Box 95427
Atlanta, Georgia 30347

We'll need your name and address; year, make and model vehicle, as well as engine size; and whether you have a manual or automatic transmission.

Technical service bulletins

All vehicles need repairs during their lifetime. Sometimes Ford issues technical service bulletins (TSBs) and easy-to-read explanations describing unusual engine or transmission conditions which may lead to costly repairs, the recommended repairs, and new repair procedures. Often a repair now can prevent a more serious repair later. Ask Ford or your dealer for any such TSBs and explanations relating to your Ford or Lincoln-Mercury vehicle.

To get copies of these technical service bulletins and explanations for your vehicle or the vehicle of interest to you: Call Ford toll-free at 1-800-241-3673. Alaska/Hawaii call 1-800-241-3711 and in Georgia call 1-800-282-0959.

Or write Ford at:

Ford Customer Information System
Post Office Box 95427
Atlanta, Georgia 30347

We'll need your name and address; year, make and model vehicle, as well as engine size; and whether you have a manual or automatic transmission.

Options availability

Options shown or described in this catalog are available at extra cost and may be offered in combination with other options or subject to additional ordering requirements or limitations. Your Ford Dealer has the latest information.

Product changes

Ford Division reserves the right to change product specifications at any time without incurring obligations.

Buy or lease a new Ford Taurus

Have you driven a Ford...lately?



FORD TAURUS

