

1986
Lincoln Continental



Lincoln.
What a luxury car
should be.

The selection of a luxury car is a highly individual matter. Yet, of all the varying preferences of luxury car owners, one is virtually unanimous. The demand for quality. And it is in this fundamental area that the Lincolns most clearly excel.

Ever since the classic-car era of the Twenties and Thirties, Lincoln automobiles have been known for their luxury, quality and engineering innovation.

Lincoln's steadfast dedication to integrity and craftsmanship helped it become the manufacturer of the highest quality luxury cars built in America.*

Lincoln makes certain that quality is designed into every car and that it is built in at every step throughout the manufacturing process.

While what Lincoln automobiles have in common is impressive, what is perhaps even more impressive is how they are different from each other. For each addresses and fulfills a different luxury need.

The 1986 Lincoln Continental, for example, is a truly contemporary luxury automobile, a marvelous comingling of high technology and high fashion. This is the contemporary luxury sedan for people who desire exceptional elegance, four-door convenience, sophisticated electronics and personalized driving comfort.

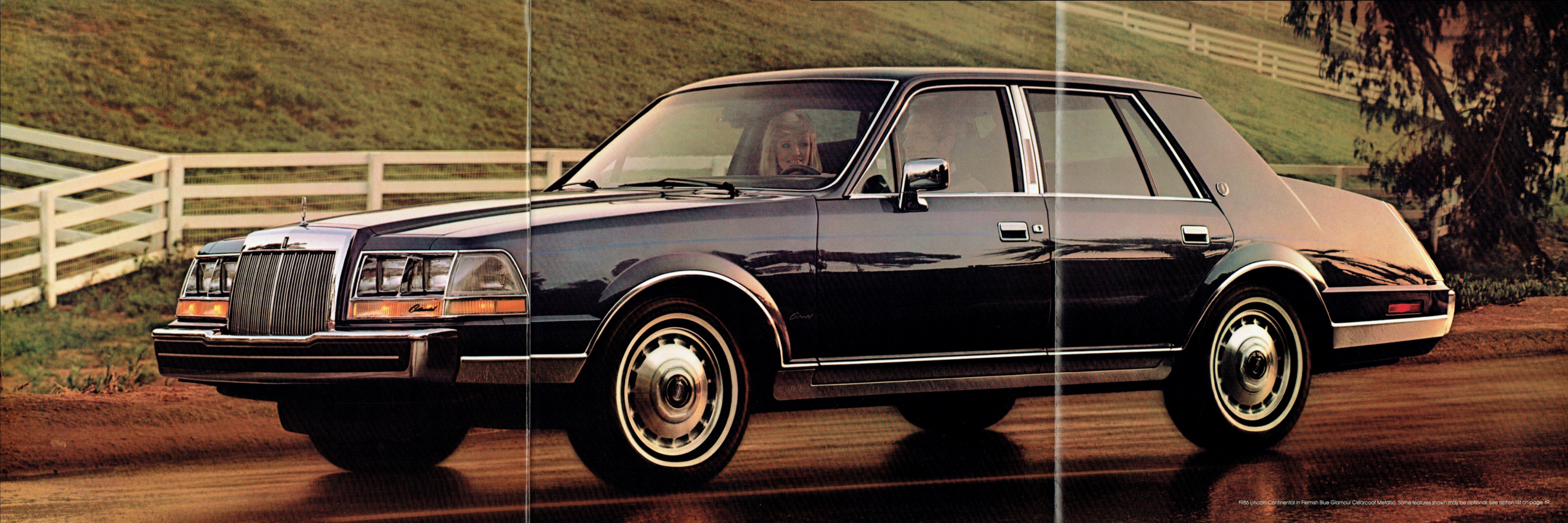
The Lincoln Mark VII satisfies not only the craving for comfort, but the passion for performance.

And the Lincoln Town Car continues its tradition of uncompromising ride, room and comfort.

The 1986 Lincolns. Truly what luxury cars should be.

*Based on a 1985 survey of owner-reported problems during the six months prior to the survey on 1981 through 1984 models designed and built in the U.S.





The Lincoln Continental.

You don't really need others to confirm the wisdom of your choice.
But, invariably, they will.

Some automobiles are created to be a part of life's finer things. Their look alone is enough to set them apart from the common and the mundane.

Lincoln Continental is such an automobile. Its innate style is comfortably at home wherever the trappings of the good life are readily apparent. Business in the city. Golf at the club. Weekends in the country.

Yet Lincoln Continental possesses more than good looks alone. This is an extraordinary, four-door luxury sedan that graciously accommodates up to five adults. And Continental is the complete car, with more features included as standard equipment than ever before.

Perhaps most extraordinary of all is Lincoln Continental's innovative technology and engineering.

Consider for a moment the Continental's standard 5.0-liter V-8 engine. This sophisticated powerplant features sequential multi-port electronic fuel injection that gives Continental improved responsiveness and operating efficiency.*

The engine is controlled by a fourth-generation Electronic Engine Control system (EEC-IV)—one of the most technologically advanced systems of its kind in the world.

Also standard on every Continental are power-assisted four-wheel disc brakes and Lincoln's advanced Anti-Lock Brake System (ABS). ABS is one of the most advanced

braking systems of its type in the world. It uses another on-board computer to help stop the car faster and with greater straight-line control than conventional brake systems—on wet or dry pavement.

Equally impressive is Continental's road-smoothing Electronic Air Suspension system. The car actually rides on four columns of air that isolate the driver and passengers from the jolts and jars of daily driving. No other luxury car in the world, at any price, has a suspension this sophisticated. At the same time, Continental's computer-controlled automatic load leveling system maintains proper vehicle height regardless of the number of passengers or the load in the trunk.

As smoothly as it rides, however, Lincoln Continental still provides the driver with the feel of the road. And that is as it should be, for Continental was conceived from the very beginning as a personal luxury car for those who consider driving a real pleasure. Its nitrogen gas-pressurized front struts and rear shocks, plus front and rear stabilizer bars, play an integral role in delivering its excellent handling capabilities.

Lincoln Continental for '86. Beautiful to behold. Yet, thanks to its exceptional driver-oriented technologies, even more beautiful to experience.

*See EPA fuel economy statement on page 21.

Sumptuous elegance and functional efficiency in the Continental tradition.

The sensation of tasteful luxury extends inside to the Lincoln Continental's interior. Continental's seats are lavishly upholstered in a distinctive pleated sew style. Its twin comfort lounge front seats are shown here with optional Raven Black leather seating surfaces. Rich cloth seats are standard.

Personalized controls, located on individual consolettes between the seats, enable the driver and front-seat passenger to adjust their six-way power seats for proper body support and riding comfort. Both seats have power recliners and four-way articulated headrests. For added comfort and convenience, front and rear center armrests, a leather-wrapped steering wheel, dual illuminated visor vanity mirrors, power decklid pulldown and keyless entry are only some of the equipment now standard. A complete listing is on page 18.

On the following pages, you'll see Continental's contemporary, blacked-out electronic instrument panel. It's handsomely trimmed in genuine walnut veneer that matches the Continental's walnut veneer door trim panel appliques.

Every control and convenience in Lincoln Continental is ergonomically positioned close to the driver's fingertips. Pertinent data

is displayed in readouts from the car's electronic speedometer, electronic odometer, digital fuel gauge and system monitors. Additional travel information is available through Continental's programmable trip computer. A 12-button keyboard lets the driver call up helpful information such as elapsed time, average speed, estimated time of arrival, distance to empty and instant and average fuel economy in either U.S. or metric readings.

Overhead, there's an aircraft-type information console that houses additional system monitors, a pair of dual-intensity courtesy/reading lamps, optional power moonroof control, compass readout of the vehicle's direction and outside temperature display that can warn the driver of possible icing conditions.

To soothe the soul, Lincoln Continental offers the exceptional Ford JBL high-performance audio system. This luxury option features 12 JBL speakers and up to 140 watts of music power to produce a sound that outperforms many home stereo systems.

Unquestionably, Lincoln Continental is one motorcar that pays exceptional attention to unabashed comfort and luxury.





P R N O D L

FASTEN BELTS

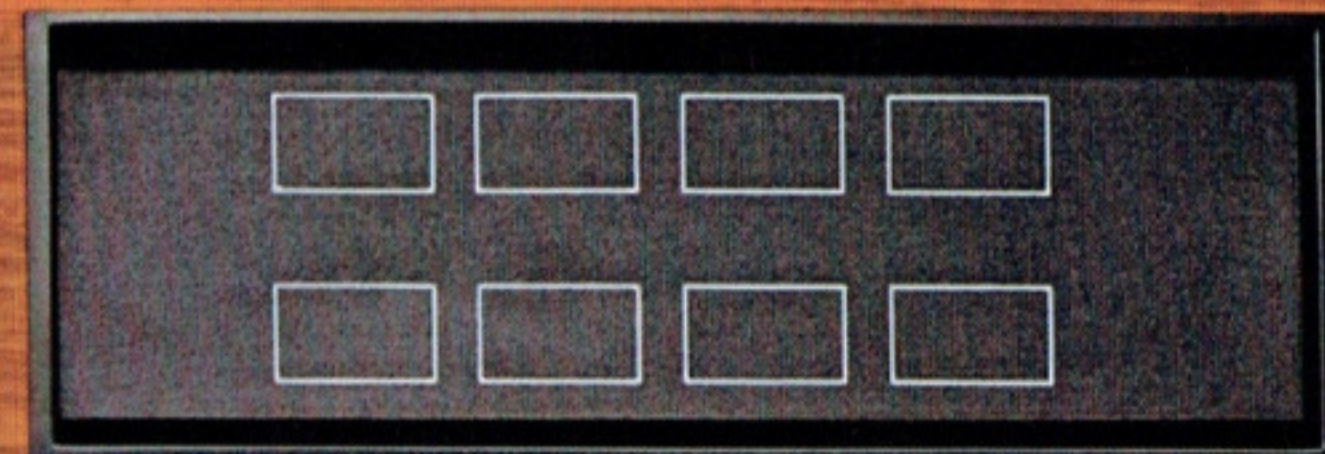
PANEL DIM
LIGHTS
AUTO DIM
MAX RANGE
OFF

ANTENNA

DOOR AJAR

2:30
FEB. 22

1 CLOCK 2 ALARM 3 E/TIME 4 ETA 5 DEST 6 DIST 7 AV SPD 8 F/ECON 9 DTE 0 SET MILES km RESET



POWER 101.9 FM VOL BASS TREB SPKRS L R F B DOLBY NR
SEEK AM FM MEMORY AUTO-REVERSE EJECT DNR AMS
REV

72°
COOL electronic climate control WARM
OFF/AUTO LO HI A/C - PANEL - FLOOR

**When Givenchy does
the Continental, it's
positively captivating.**

This is the seventh year we've asked Parisian couturier, Hubert de Givenchy, to create a special edition Lincoln. The result: the 1986 Givenchy Designer Series Lincoln Continental.

His interpretation is magnificent. The sedan's exterior is finished in a sensational combination of Midnight Black above a hauntingly dark Red Velvet Glamour Clearcoat Metallic that's unique to this car. This special paint scheme is accented by painted pinstripes in contrasting shades of Taupe, Cranberry and Red Velvet. The stripes start at each headlamp housing and traverse the car's profile. A second stripe on

Continental's distinctive decklid culminates with Givenchy's double "G" block logo. Givenchy gold lettering is fixed in the rear door quarter window glass and heraldic Givenchy badges adorn the rear roof pillars.

Givenchy personally specified that this, the most stylish of Continentals, would also be equipped with wire-spoke aluminum wheels as standard equipment. Like every

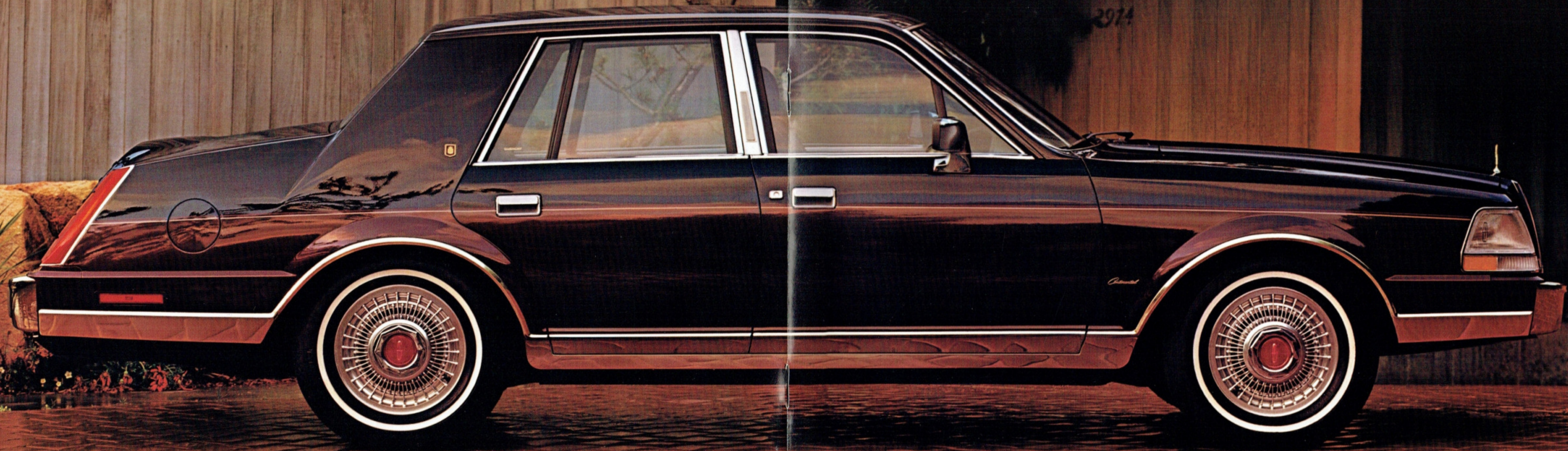
Lincoln Continental, the Givenchy Designer Series features additional welcome conveniences—as standard equipment—including keyless entry, power decklid pulldown, coach lamps and AM/FM stereo electronic search radio with cassette player and Premium Sound.

With so much luxury, it's difficult to keep in mind that the Givenchy Continental is a real performer. A powerful 5.0-liter V-8 engine with

sequential multi-port electronic fuel injection and the remarkable Anti-Lock Brake System (ABS) are also standard.

The '86 Givenchy Continental: a breathtaking example of design excellence—built by Lincoln for American drivers.

1986 Lincoln Continental Givenchy Designer Series in Midnight Black over Red Velvet Clearcoat Metallic. Some features shown may be optional. See option list on page 19.





Sophisticated coloration and contemporary opulence epitomize the Givency touch.

The interior of the Givency Continental is absolutely sumptuous. A rich shade of Taupe unifies the entire passenger compartment in understated perfection.

Givency has covered the Continental's seats in perforated Taupe leather that has been dramatically pleated by the designer in his own impeccable style. Perforations in the leather seating surfaces allow these seats to "breathe" for added occupant comfort. Taupe-colored cloth seats in a Givency-designed vertical sew style are available as a no-cost option. Both seating treatments are handsomely decorated with the Givency logo on their front and rear seatbacks.

Givency also outfitted this car with a Taupe leather-wrapped steering wheel, six-way power-controlled twin comfort lounge front seats with power recliners and four-way articulated headrests, front-seat storage pouches, dual illuminated visor vanity mirrors and a color-keyed carpeted trunk to further emphasize its luxury and comfort. Then he highlighted it all by placing his

Givency logo on the car's instrument panel and front floor mats.

Like all 1986 Continentals, the Givency Designer Series features a luxurious complement of standard features: keyless entry system with the illuminated entry system, power decklid pulldown, Compass/Thermometer Group and AM/FM stereo electronic search cassette radio with Premium Sound, power antenna and six-speaker system.

Inside or out, on the highway or in your driveway, the 1986 Givency Continental is a superbly crafted automobile of incomparable elegance and grandeur.



Lincoln automobiles have a long and distinguished reputation for engineering excellence. From the V-12s of the early Thirties to the computer-controlled wizardry of today's cars, Lincoln has been at the forefront of innovation and change.

The 1986 Lincoln Continental incorporates some of the most advanced technology currently available in any production car.

Lincoln's computer-controlled Anti-Lock Brake System (ABS) is now standard on every Continental model. This is one of the most advanced braking systems of its type in the world.

This technological breakthrough works with the Continental's standard power four-wheel disc brakes. They can combine to provide shorter stopping distances—on wet, icy or dry pavement—than conventional systems. Even under the heaviest braking, as in an emergency, the front and rear wheels are designed not to lock up.

Speed sensors at each wheel relay information to a microprocessor which, in turn, distributes braking power between the car's front and rear brakes and between the left and right front disc brakes—stopping the car swiftly and surely.

Continental's Electronic Air Suspension is another technological marvel. And, like the Anti-Lock Brake

Sophisticated engineering and safety advancements may be the most important Lincoln Continental luxury of all.

System, it's a first for U.S. manufacturers. At each corner, the car is sup-



ported by a tough, Ford-designed rubber air spring that's manufactured by Goodyear. The air spring has a piston design that varies the spring rate according to road conditions.

The springs, matched to nitrogen gas-pressurized front struts and rear shock absorbers—plus front and rear stabilizer bars—provide a remarkable blend of riding comfort and road handling capabilities.

Lincoln Continental's sophisticated air suspension even provides automatic computer-controlled load leveling—not just front-to-rear, but also side-to-side. Scientifically placed sensors tell a computer when to make adjustments in the car's stance.

Maintaining proper ride height ensures that Continental's suspension, headlights, even its sleek shape, provide their intended benefits.

For 1986, all Lincoln Continentals have increased power. The standard Continental and the Givenchy Designer Series are powered by a 5.0-liter V-8 engine that features sequential multiple-port electronic fuel injection.

This advanced system injects a metered amount of gasoline to the intake port of each cylinder at the exact moment it's needed in a sequence identical to the cylinder valve openings. This gives the engine greater operating precision and fuel efficiency.*

This engine also features individual cylinder knock sensors and low-friction roller tappets like those used in hand-built competition engines.

Continental's zero-to-50 mph acceleration is swift enough to impress those who take their driving seriously. And its fuel economy rating is highly respectable for this class of automobile.*

The car's engine and powertrain are controlled by EEC-IV—Ford Motor

Company's fourth-generation Electronic Engine Control computer. It is one of the most advanced automotive computers in regular production use today. This "automotive brain" modifies and controls all necessary operational functions to improve combustion efficiency.

Lincoln Continental's standard four-speed automatic overdrive transmission is more efficient than conventional three-speed transmissions because its fourth-gear overdrive allows the engine to run slower to maintain a cruising speed. And that final gear features nearly 100% mechanical drive, which means virtually no slippage and, therefore, improved fuel economy.*

The plant where Lincoln automobiles are assembled is every bit as technically advanced and innovative as the cars themselves.

Every Lincoln is produced at the Wixom Assembly Plant outside of Detroit. This plant was conceived, built and is operated solely for the production of luxury automobiles.

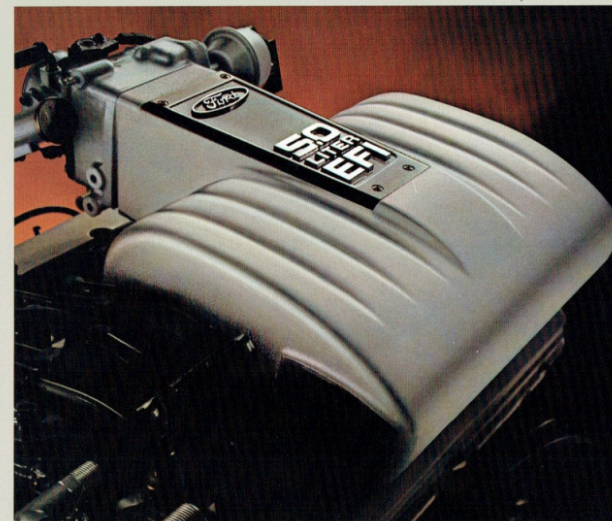
One of the most important and technically amazing pieces of equipment at Wixom is a \$2 million machine called the Flexible Inspection System (FIS).

This machine is a giant computer-coordinated measuring device

designed to provide accurate measurements of the fit of many of the components that make up a bare body shell.

FIS is equipped with two delicate ruby-tipped electronic sensors that touch the car in as many as 150 different locations.

The main computer on the FIS then compares these measurements, indicated in one one-hundredth of a



millimeter, with design objectives. It then records these measurements on statistical charts which plant personnel can use to help maintain consistent quality.

For Lincoln owners, this means high quality control, close body fits, and a fine finish on their Lincoln Mark VII, Continental or Town Car.

Another important concern for every motorist is safety.

All Lincoln automobiles are designed to meet or exceed all federal safety standards.

As part of the testing, roofs and doors are crushed, car bodies are vibrated and bumpers are subjected to both fixed-barrier and pendulum tests.

To help the driver avoid dangers, each Lincoln car provides good handling and quick response—all important factors in the realm of operating safety.

Every Lincoln is equipped with seat belts, which are proven to help reduce injury and to help prevent fatalities in the event of an accident. Seat belt use now is mandatory in many states and the payoff in lives saved has been substantial.

Occupant protection, however, is not limited to adults. Recent studies have shown that the proper use of child-protection restraint systems prevents injuries and saves young lives. Almost every state now requires the use of protective child

restraints. Ford Motor Company's Tot-Guard Safety Seat and Infant Carrier meet or exceed all applicable federal safety standards.

Both are easy to install and use the seat belts already equipped in Lincoln cars.

Lincoln strongly recommends the regular use of both child restraints and seat belts, whether driving around the block or across the country.

*See EPA fuel economy statement on page 21.

The beauty of Continental's features is so many of them are standard.

Cast-aluminum wheels
Standard on Continental. Not available on Givenchy.

The Lincoln Continental creates a standard for personal luxury sedans that other manufacturers can only hope to follow. For 1986, the Continental's list of standards is significantly longer than in previous years. A multitude of specialized features and conveniences are included as standard equipment. While still others are available as options to let each Continental owner personalize his or her automobile to reflect individual interests and tastes.

Lincoln knows it's the littlest luxuries that can make the largest differences in how well a car performs and how well it caters to the expectations of its driver and passengers.

In Continental, no detail has been overlooked. This is an automobile in which every piece of standard equipment and every option has been designed to provide exceptional luxury, comfort and convenience. Indeed, this is what a luxury car should be.

Wire-spoke aluminum wheels
Standard on Givenchy, optional on standard Continental (except in California).

Geometric cast-aluminum wheels
Optional on all models.

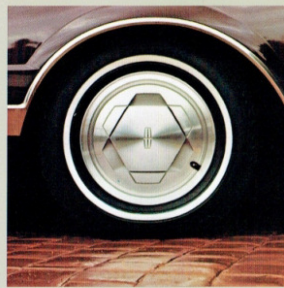
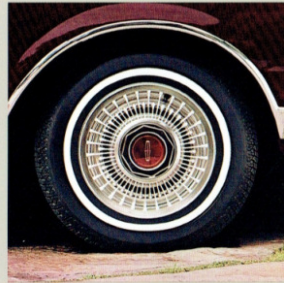
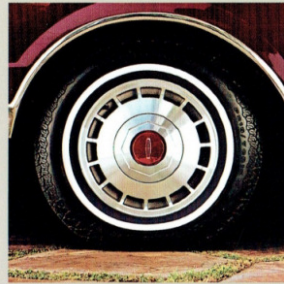
Power glass moonroof

Let the sun shine in. This power-operated option opens Continental's interior to the great outdoors. The roof slides open or closed at the touch of a button. An integral sunshade/privacy panel is included as part of this option.



Ford JBL high-performance 12-speaker audio system

An extraordinary car stereo system, this luxury option provides the listener with up to 140 watts of music power through 12 JBL speakers with the same mid- and high-frequency elements front and rear for a full, rich, uniform sound. The system features an AM/FM stereo electronic search radio and cassette player with automatic metal tape equalization and DNR® noise reduction.



Selected standard functional features

- 5.0-liter V-8 engine with sequential multi-port electronic fuel injection and Electronic Engine Controls (EEC-IV)
- EEC-IV's memory allows a service technician to determine, through sensors, possible problem areas within the engine
- Four-speed automatic overdrive transmission
- Anti-Lock Brake System
- Power-assisted rack-and-pinion steering
- Power four-wheel disc brakes
- Speed control
- Single key entry/ignition
- Electronic Air Suspension with automatic level control
- Nitrogen gas-pressurized front struts and rear shock absorbers
- Front and rear stabilizer bars
- 71-amp-hr maintenance-free battery
- 20.3-gallon fuel tank
- White sidewall all-season Michelin P215/70R15 steel-belted radials
- Remote fuel filler door release
- Corrosion protection
- Automatic parking brake release
- Interval windshield wipers
- Rear window defroster

Selected standard interior features

- Twin comfort lounge front seats with dual power six-way adjustments, dual power recliners, front-seat armrests, seatback robe cords and map pockets
- Four-way articulated front-seat headrests
- Rear-seat center armrest and integral headrests
- 30-ounce plush floor carpeting and matching 18-ounce carpeting on the cowl and lower door panels
- Carpeted luggage compartment
- Rear compartment heat duct
- Door trim panels with genuine walnut veneer appliques, illuminated stowage bins and carpeted lower portions
- Power side and vent windows
- Power door locks including power decklid release
- Power decklid pulldown
- Door pull straps
- Roof rail assist straps
- Blackout instrument panel with walnut veneer appliques
- Electronic instrument panel with Message Center, digital fuel gauge and speedometer, and electronic odometer
- Overhead information console with two dual-intensity courtesy/reading lamps
- Compass/Thermometer Group
- AM/FM stereo electronic search cassette radio with Premium Sound, power antenna and six-speaker system
- Electronic Automatic Climate Control system
- Illuminated entry with instrument panel illumination
- Tinted glass all around
- Low oil-level warning feature
- Leather-wrapped A-frame tilt steering wheel with fingertip speed control and center horn blow
- Courtesy lights
- Headlamp convenience system
- Dual illuminated visor vanity mirrors
- Rear high-intensity reading lamps
- Front floor mats

Selected standard exterior features

- Keyless entry system
- Bright grille, bumpers, windshield, side window and wheel lip moldings
- Bright belt and lower bodyside moldings
- Quad halogen headlamps
- High-mount rear stop lamp
- Cornering lamps
- Coach lamps
- Left-hand/right-hand heated power remote-control mirrors
- Cast-aluminum wheels with locking lug nuts
- Gas cap tether

Selected Lincoln Continental options

- Automatic dimming day/night mirror
- Leather seating surfaces (available at no extra cost on Givenchy)
- Traction-Lok axle, 3.08:1 ratio. For improved traction in sandy, muddy and snowy conditions
- White sidewall puncture-sealant tires
- Anti-Theft Alarm System
- Color-keyed vinyl bodyside protection moldings
- Bright brushed upper bodyside moldings (not available on Designer Series)
- Dual-Shade and Glamour exterior finishes

Standard exterior colors

Midnight Black
Arctic White
Dove Gray
Platinum Clearcoat Metallic
Graphite Clearcoat Metallic
Saxony Blue Clearcoat Metallic
Silver Blue Clearcoat Metallic
Shadow Blue Clearcoat Metallic
Champagne Clearcoat Metallic
Maroon Clearcoat Metallic
Sandalwood Clearcoat Metallic

Glamour paint options

Antique Rose Glamour Clearcoat Metallic
Red Velvet Glamour Clearcoat Metallic
Flemish Blue Glamour Clearcoat Metallic
Antique Gold Glamour Clearcoat Metallic
Dark Sandalwood Glamour Clearcoat Metallic

Dual-Shade paint options

Platinum Clearcoat Metallic/
Graphite Clearcoat Metallic
Silver Blue Clearcoat Metallic/
Flemish Blue Glamour Clearcoat Metallic
Champagne Clearcoat Metallic/
Antique Gold Glamour Clearcoat Metallic
Antique Rose Glamour Clearcoat Metallic/Red Velvet Glamour Clearcoat Metallic

Interior trim

Twin comfort lounge seats are standard with cloth trim, optional with leather surfaces

Standard interior colors

Terra Cotta Red
Admiral Blue
Sand Beige
Taupe
Raven Black
Oxford Gray

Givenchy Designer Series standard features

Includes all Continental standard equipment, plus the following selected additions and/or differences:

- Unique Midnight Black over Red Velvet Glamour Clearcoat Metallic exterior
- Perforated Taupe leather seating surfaces in designer's sew style (cloth seat trim also available at no extra cost)
- Unique body and decklid striping, special Givenchy logo on instrument panel, Givenchy gold lettering in rear door quarter window, Givenchy badge on roof pillar and "Double G" logo on decklid
- Wire-spoke aluminum wheels

Continental specifications

EXTERIOR	
Wheelbase (in.):	108.5
Overall length (in.):	200.7
Overall width (in.):	73.6
Overall height (in.):	55.6
Tread (in.)	
—front:	58.4
—rear:	59.0
INTERIOR	
Front compartment	
Head room (in.):	38.5
Leg room (in.):	42.0(a)
Shoulder room (in.):	57.6
Hip room (in.):	52.5
Rear compartment	
Head room (in.):	37.7
Leg room (in.):	38.3
Shoulder room (in.):	57.8
Hip room (in.):	52.1
Luggage capacity (cu. ft.):	14.7
Fuel tank capacity (gal.):	20.3
Curb weight (lb.):	3778

(a) 44.0 with front seat in rear-most position.

One of things that accompanies the purchase or lease of a 1986 Lincoln Continental or any Lincoln automobile is the Lincoln Quality Commitment.

Put simply, the Lincoln Quality Commitment is our pledge to make sure Lincoln owners receive special treatment. We'll do everything we can to make driving and owning a Lincoln automobile a rewarding experience.

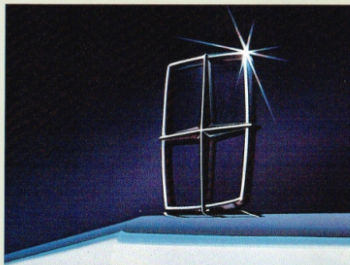
This means that all Lincoln cars meet rigorous quality standards and that integrity is inherent in every Lincoln part and design. It also means that Lincoln sales and service departments are fully committed to providing the highest level of customer satisfaction in the entire industry.

According to a 1985 survey, we are offering the highest quality domestic cars. That survey was based on an average of owner-reported problems during the six months prior to the survey on 1981 through 1983 models designed and built in the U.S.

To help us provide the highest level of customer satisfaction in the entire industry, a program coordinator has been appointed in every Lincoln-Mercury dealership to help further improve customer satisfaction and serve the particular needs of Lincoln owners.

One part of the Lincoln Quality Commitment is the 36-month/36,000-mile (whichever occurs first) limited warranty that goes along with every Lincoln car. This limited warranty has even been expanded to include components like the electronic dashboard, trip computer and the computer-controlled air suspension. Ask your Lincoln dealer for a copy of the warranty and take time to read it.

The Lincoln Commitment.



Occasionally there may be some problems that an individual dealer may not be able to resolve. To assist the customer in resolving these difficulties, the dealer can call on the aid of one of 29 Luxury Car Owner Relations Managers, located in each Ford Parts and Service Division District Office. There is also a national Lincoln Commitment coordinator who will ensure priority handling of any and all Lincoln-related owner inquiries at the request of the district managers.

A special Lincoln Commitment toll-free hot line 800 telephone number also is included

as a part of the Lincoln Commitment to help ensure prompt attention to any special problems a customer might encounter. This phone number puts the owner in direct communication with the Lincoln Commitment Program coordinator at Ford Parts and Service Division Headquarters in Dearborn, Michigan, and it is in operation during regular business hours, 9:00 a.m. to 5:00 p.m. EST, Monday through Friday, except holidays.

Additionally, because Lincoln is interested in finding out just how pleased our customers are in areas such as delivery, service and product satisfaction, we occasionally will write to them as a part of this program and ask for their opinion on our performance. The goal, of course, is constant improvement in customer satisfaction with our automobiles and service.

The Lincoln Quality Commitment Program. It's just another example of how we at Lincoln are fully committed to making the ownership of our cars a pleasurable and satisfying experience.



EXTENDED SERVICE PLAN

Ford Motor Company's optional Extended Service Plan covers certain selected components on new Lincoln cars for longer than the basic warranty. The cost is so moderate for the protection offered that it could pay for itself the first time it is needed. Ask your Lincoln-Mercury dealer for complete details of the plan, which is available on cars sold and normally operated in the 50 United States and Canada.



LIFETIME SERVICE GUARANTEE

Participating Lincoln-Mercury dealers are now offering the Lifetime Service Guarantee, which guarantees their work on your Lincoln Continental for as long as you own it. This means that you pay for a covered repair once and never again. If it ever has to be fixed again, return to the repairing dealer and the repairing dealer will fix it free. Free parts. Free labor. Even if the car is kept a lifetime.

It doesn't matter where the car was purchased, or whether it's new or used, the work is still covered by the repairing dealer.

This limited warranty covers vehicles in normal use. Items not covered are routine maintenance parts, belts, hoses, sheet metal and upholstery. Ask your Lincoln-Mercury dealer for a copy of the warranty and take time to read it.

FORD-PAID REPAIR PROGRAMS AFTER THE WARRANTY PERIOD

Sometimes Ford Motor Company offers adjustment programs to pay all or part of the cost of certain repairs. These programs are intended to assist owners and are in addition to the warranty or required recalls.

Ask Ford Motor Company or your Lincoln-Mercury dealer about such programs relating to your Lincoln Continental.

To get copies of any adjustment program for your Lincoln vehicle or the one of interest to you, call Ford toll-free at 1-800-241-3673.

In Alaska and Hawaii, call 1-800-243-3711.

In Georgia, call 1-800-282-0959 or write Ford at: Ford Customer Information System, Post Office Box 95427, Atlanta, GA 30347.

Please include your name and address, year, make, model and vehicle identification number, as well as engine size.

TECHNICAL SERVICE BULLETINS

All vehicles need repairs during their lifetime. Sometimes Ford issues Technical Service Bulletins (TSBs) and easy-to-read explanations describing unusual engine or transmission conditions which may lead to costly repairs, the recommended repairs and new repair procedures. Often a repair now can prevent a more serious repair later.

Ask Ford Motor Company or your Lincoln-Mercury dealer for any such TSBs and explanations relating to your Lincoln Continental.

To get copies of these Technical Service Bulletins and explanations for your Lincoln vehicle or the one of interest to you, call Ford toll-free at 1-800-241-3673.

In Alaska and Hawaii, call 1-800-243-3711.

In Georgia, call 1-800-282-0959 or write Ford at: Ford Customer Information System, Post Office Box 95427, Atlanta, GA 30347.

Please include your name and address, year, make, model and vehicle identification number, as well as engine size.

LEASING—There may be considerable advantages in leasing a new Lincoln Continental depending on individual needs.

Leasing can free up your capital and may reduce your monthly cash outlay. If the car is used in business, tax records may be simplified.

Your Lincoln-Mercury Dealer Leasing Association (LMDLA) member can help you with a lease program that is right for you.

EPA STATEMENT


1986 EPA estimates were not available at the time this catalog was published. Lincoln Continental models, however, should post excellent mileage figures in the new EPA Gas Mileage Guide. See your Lincoln-Mercury dealer for the latest information.

Buckle up—together we can save lives.

Specifications and descriptions used were in effect when this publication was approved for printing. Lincoln-Mercury Division reserves the right to discontinue options at any time or change specifications, equipment or designs without notice and without incurring obligation.

Standard and optional equipment listed is subject to change. Some features described are optional at extra cost. Some options are required in combination with other options.

Availability of some features may be subject to a slight delay.

A photograph of a white fence in a rural setting with trees and a road. The scene is bathed in warm, golden light, suggesting late afternoon or early morning. The fence runs across the middle ground, with a road in the foreground and a dense line of trees in the background.

LINCOLN. What a luxury car should be.

LINCOLN CONTINENTAL

LINCOLN-MERCURY DIVISION



LITHO IN U.S.A. (362M) 8-85 P-9600