

1 9 9 0

V-JIMMY, SUBURBAN, BONUS/CREW CAB

GMC
TRUCK



- MAX TRAILER WEIGHT 13,500 LB ON CREW CAB
- ELECTRONIC FUEL INJECTED GAS ENGINES
- REAR WHEEL ANTI-LOCK BRAKING ON JIMMY AND SUBURBAN
- LIMITED WARRANTY - 3 YEARS/50,000 MILES



4x4 SLE V-Jimmy shown with available equipment, including deluxe two-tone paint.

V-JIMMY The 4X4 That Has It All

Welcome to everything you ever wanted in a full-size sport utility vehicle, and then some: The standard power of either a big 5.7 Liter gasoline V8 with Electronic Fuel Injection or a rugged 6.2 Liter diesel V8 (except in California). The ground-gripping traction of 4-wheel drive. The muscle of truck-size payload ratings. And the impressive ride and handling that results from a long 106.5-in wheelbase combined with an advanced 4x4 suspension system.

All this plus room enough to carry up to five passengers when equipped with the available rear seat. Or you can pack aboard up to 106.2 cu ft of cargo with the rear seat folded.

MORE TOUGH FOR THE ROUGH

V-Jimmy value comes on even stronger for '90 with a new standard rear wheel anti-lock brake system designed to help provide smooth, stable stops on slick or dry pavements (system operates only in the 2-WD mode.)

Standard All Season steel-belted radial tires offer long tread life. And V-Jimmy's tough anti-corrosion protection is beefed up in '90 by additional use of

two-sided galvanized steel. Standard equipment also includes power steering, power brakes, front stabilizer bar and heavy-duty battery (new for '90).

TWO BEAUTIFUL TRIM LEVELS

Choose from standard SLX trim or the extra-luxurious SLE. For '90, both offer the added convenience of front tow hooks, power tailgate window, intermittent windshield wipers and an electronically-tuned AM/FM stereo radio with seek-scan and digital clock — all standard.

Elegant SLE. This top-level trim comes with high-back reclining front bucket seats in your choice of Custom Cloth or Custom Vinyl upholstery. Interior features include new color-keyed front floor mats, deluxe instrument panel, sport steering wheel and auxiliary lighting package.

Outside, SLE gets the deluxe treatment with features like chrome-trimmed grille with quad halogen headlamps, bright wheel trim covers and chromed bumpers with impact strips and new black bumper guards. Bright-trimmed black body side and rear moldings and bright wheel opening moldings are included. See page 10 for further details.

Standard SLX. This attractive package features high-back front bucket seats covered with rich Custom Vinyl. Other standard equipment includes a gage-type instrument cluster with trip odometer, tinted glass and new headlamp-on warning buzzer. Exterior styling is enhanced with a sporty dark and light argent painted grille, black-painted below eyeline mirrors and argent road wheels with bright hubcaps. See page 10 for further details.



Available 5-person seating allows 51.3 cu ft cargo volume behind the rear seat.



With available rear seat folded, there's a maximum of 106.2 cu ft of cargo volume.



SLE interior with available rear seat trimmed in Custom Cloth.



SLE interior with standard reclining bucket seats trimmed in Custom Cloth.

INDEX	PAGE
V-Jimmy	2-3
Suburban	4-5
Bonus/Crew Cab Pickups	6-7
Engines/Trailering	8
Exterior Colors	9
Standard & Available Equipment	10
Options/Technical Information	11
Owner Benefits	Back Cover

SUBURBAN A Truck-Sized Wagon

There have always been lots of good reasons to own a big, tough, powerful GMC Truck Suburban. But for 1990 there's even more to like about this enduringly popular full-size, wagon-type truck that's available with either 2- or 4-WD as well as your choice of panel-type rear doors or tailgate with drop glass.

Among other new standard features, it now comes with rear wheel anti-lock brakes. This advanced system helps provide smooth, stable stops, with the vehicle empty or loaded, on slick or dry pavements. (On 4x4 models, anti-lock brakes operate in 2-WD only.)

SPACE FOR UP TO NINE

Suburban continues to be one wagon you can count on for genuine full-size space and comfort. Equipped with available center and rear seating, it can carry nine adults, with 40.8 cu ft left over for luggage. Or remove the rear seat and fold the center seat and you have a whopping 167 cu ft of cargo volume plus a load floor more than eight feet long. Suburban can haul truck-sized payloads, too.

PLENTY OF POWER AND PULL

Suburban's trailer-towing capability is legendary. A properly equipped 2500 Series model can tow up to 9500 lb (including weight of trailer, cargo and equipment). See page 8 for more on trailering. The power lineup includes two big gasoline V8s with Electronic Fuel Injection plus a truck-tough V8 diesel (not available in California on 1500 Series models). 4x4 models provide superb traction for trailering or off-roading.

BIG ON STANDARD VALUE

New standard features for '90 include a heavy-duty battery, heavy-duty shock absorbers on all models, 37-gallon fuel tank (slightly larger for diesel models), front tow hooks on 4x4 models, power tailgate window on tailgate models, intermittent windshield wipers and an electronically-tuned AM/FM stereo radio with seek-scan and digital clock.

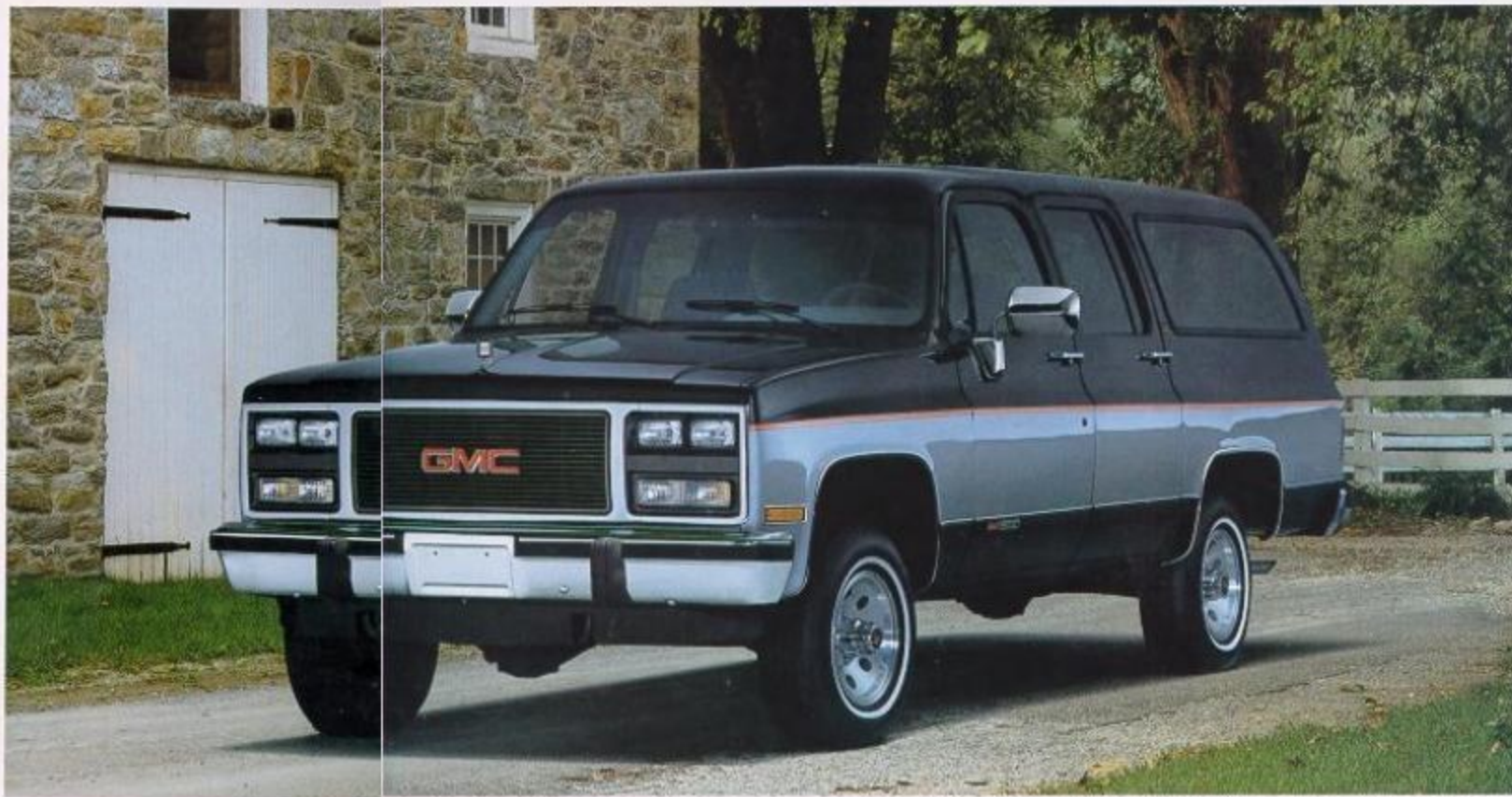
To help preserve Suburban's good looks, anti-corrosion measures have been increased by additional use of 2-sided galvanized steel. And, of course, clear coat over color coat paint finish.

LUXURY AND COMFORT

Suburban offers two attractive trim treatments, SLX or uplevel SLE. Both come with a standard 3-passenger front bench seat. High-back reclining front bucket seats are available with SLE trim.

SLE: The top of the line! Interior features include plush Custom Cloth seat trim, simulated woodgrain accents, power door locks, new front floor mats and sport steering wheel. Outside, there's a chrome-trimmed grille, quad halogen headlamps, chromed bumpers with new bumper guards and bright wheel trim covers. For further details, see page 10.

Tasteful SLX. This handsome trim offers a choice of Custom Vinyl or Deluxe Cloth seat upholstery. Other features include a full headliner and full-length color-keyed rubber floor covering. Exterior accents include silver road wheels with bright hubcaps. See page 10 for further details.



4x4 SLE Suburban shown with available equipment, including deluxe two-tone paint.



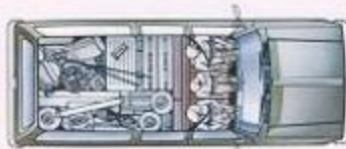
SLE instrument cluster with standard gauges and simulated woodgrain applique



SLX interior with Custom Vinyl bench seat trim



SLE interior with available seating, including reclining high-back front bucket seats.



3-person seating with standard front bench seat



5-person seating with available front bucket seats and center bench seat (SLE models only)



9-person seating with standard front bench seat and available center and rear bench seats

BONUS/ CREW CAB

Big Capacity, 4-Door Convenience

Series 3500 Bonus/Crew Cab models have one big thing in common: A stretched-out cab with extra space that comes in mighty handy for work or play. Four doors make for easy access.

UTILITY WITH VERSATILITY
Crew Cab, with standard 3-passenger rear bench seat, is designed to carry a work crew or a family. Bonus Cab versions come without a rear seat, providing 55.8 cu ft of lockable cargo space behind the front seat.

Both versions come with a spacious and versatile 8-ft cargo box out back. It can be loaded with 74.3 cu ft of cargo, equipped with a 5th wheel hitch, or outfitted with a shell or slide-on camper. Crew Cab and Bonus Cab also are available in Cab & Chassis models that can accommodate a variety of commercial bodies.

Plus, there's plenty of power available for pulling or hauling. If you need even more versatility, order a 4x4 model for added traction, or any model with available dual rear wheels for extra load-hauling and towing capacity.

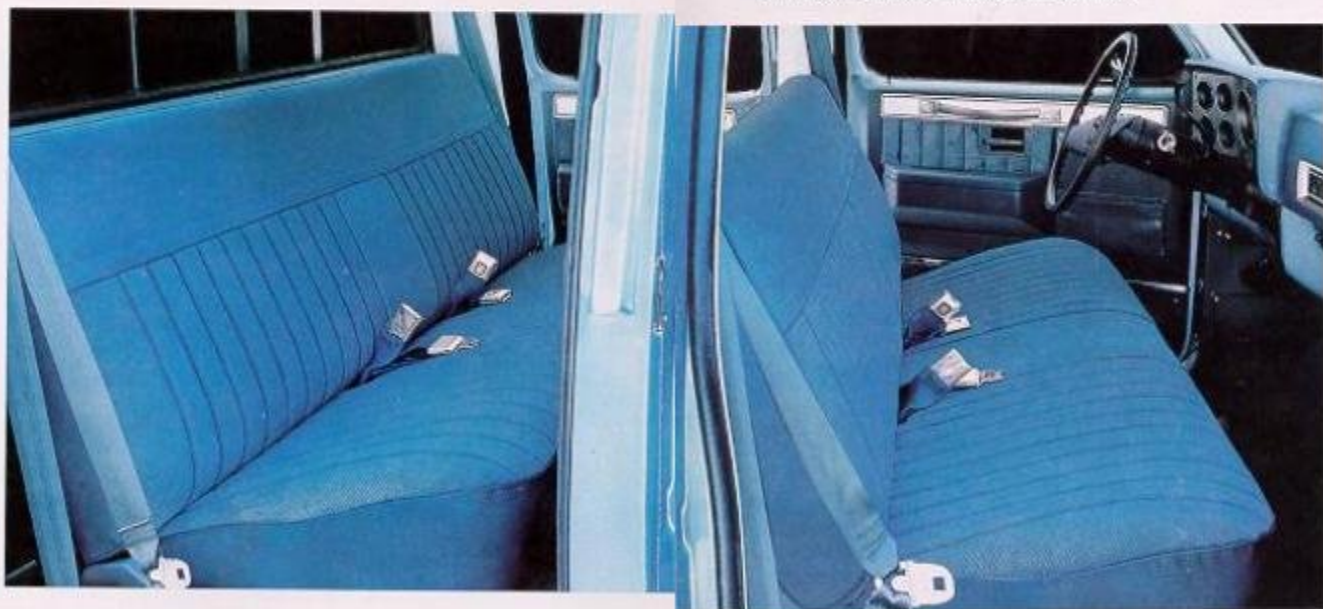
PAYLOADS THAT PAY OFF

These rugged GMC Truck Pickups offer high GVW ratings for impressive payloads (payload includes weight of occupants, cargo and optional equipment). Add dual rear wheels and you really increase maximum payload. For example, on 2-WD models it's up to 4678 lb for the Bonus Cab and up to 4616 lb for Crew Cab Pickups.

They're big on trailering, too. Examples: Equipped with dual rear wheels, Bonus/Crew Cab Pickups can tow 10,000 lb with a regular hitch — including weight of the trailer, occupants, cargo and equipment; use a 5th wheel hitch instead and the trailering capacity goes up to 13,500 lb (2-WD model), or 13,000 lb (4-WD model).



Series 3500 4x4 Crew Cab Heavy Hauler (Wideside Pickup with available dual rear wheels). Shown with standard SL trim and available mirrors.



SLE Crew Cab with Custom Cloth Seat trim

TWO TRIM CHOICES

These good-looking GMC Trucks are available in top-of-the-line SLE or standard SL trim. New standard items for both levels include an electronically-tuned AM/FM stereo radio with seek-scan and digital clock, front tow hooks on 4x4's and intermittent windshield wipers.

SLE. This plush trim offers a choice of Custom Vinyl or Custom Cloth seat upholstery. Underfoot there's wall-to-wall carpeting (front compartment only in Bonus Cab). Also included are a cloth-covered headliner, deluxe door trim panels and a dressed-up exterior. Refer to page 10 for further information.

SL. This handsome standard trim includes Custom Vinyl seat upholstery, black rubber floor covering, dual padded armrests and gage-type instrument cluster. New standard items for '90 include a dome lamp, headlamp warning buzzer and cigarette lighter. See page 10 for additional details.



Crew Cab Pickups have room for six and a spacious 8-ft long cargo box.

POWER

Whether it's off-roading, hauling cargo or pulling trailers, V-Jimmy, Suburban and Bonus/Crew Cab Pickup models offer gasoline and diesel engines with power and performance to suit a wide range of driving needs.

These engines feature the latest technical advances for power and reliability. All come with high-capacity Delco Freedom II+ batteries and Delcotron generators (a heavy-duty battery is now standard on gasoline engines).

ELECTRONIC FUEL INJECTION

All gasoline engines have computer-controlled Electronic Fuel Injection for quick starts and smooth driveability. There are no adjustments for idle speed or fuel/air mixture; an on-board computer helps tune the engine as you drive.

SINGLE-BELT ACCESSORY DRIVE

A single serpentine accessory drive belt is standard for all gasoline engines. It never needs adjustment and is designed for long wear.

BIG V8 POWER

5.7 Liter EFI V8. This popular V8, standard on all models, provides excel-

lent all-around performance for work or play. Fast-burn combustion chambers and a 9.3:1 compression ratio contribute to impressive acceleration. Improvements for '90 include heavy-duty inlet valves and enhanced oil seal integrity.

7.4 Liter EFI V8. A large-displacement engine with plenty of power and torque for big jobs, this proven V8 is ideal for heavy loads and trailer towing. An Electronic Spark Control system has been added for '90; it helps control spark knock while maintaining optimum advance firing characteristics. This engine is available on R-2500 Series Suburbans and 3500 Series Bonus/Crew Cab Pickups.

6.2 Liter V8 diesel. Standard for all diesel models, this truck-tough V8

combines heavy-work capability with the benefits of diesel power. Features include a precombustion chamber cylinder head design which promotes more complete fuel burning. The glow plug starting system for the engine used in the 25-3500 Series is revised in '90 to provide improved warm engine starts. The 6.2L V8 diesel is not available in California on V-Jimmy and 1500 Series Suburbans.

HIGH-PERFORMANCE TRANSMISSIONS

Transmissions are designed for maximum performance; they include a 4-speed manual plus 3-speed and 4-speed automatics. See your GMC Truck Dealer for transmission availability and other powertrain details.

ENGINE TECHNICAL DATA

TYPE	GASOLINE			DIESEL	
	5.7L V8	7.4L V8	7.4L V8	6.2L V8	6.2L V8
Displacement/Type	5.7L V8	7.4L V8	7.4L V8	6.2L V8	6.2L V8
Ordering Code	105	119	119	114 (2)	114 (2)
Bore & Stroke, in	4.0 x 3.48	4.25 x 4.0	4.25 x 4.0	3.98 x 3.82	3.98 x 3.82
Compression Ratio	9.3 to 1 (2)	8.6 to 1 (2)	7.9 to 1	21.3 to 1	21.3 to 1
Fuel Delivery	electronic fuel injection			mechanical fuel injection	
SAE Net Horsepower @ RPM	210 @ 4000	190 @ 4000	230 @ 3600	145 @ 3600	155 @ 3600
SAE Net Torque (lb-ft) @ RPM	300 @ 2800	300 @ 2400	385 @ 1600	255 @ 1900	270 @ 2000

1 - Not available in California on V-Jimmy or 1500 Series Suburban.
2 - Models with GVWRs of 8500 lb or below.
3 - Models with GVWRs of 8501 lb or over.

TRAILERING

All models offer the power and strength to pull impressive trailer loads. Suburban, for example, is North America's foremost recreational towing vehicle. Bonus/Crew Cab models are top choices for towing large 5th wheel trailers. V-Jimmy and other 4x4 models make excellent vehicles for off-road trailering adventures.

PLENTY OF PULL

Check the chart at the lower right for the Gross Combination Weight Ratings (GCWRs) of properly equipped V-Jimmy, Suburban and Bonus/Crew Cab Pickup models: These GCWRs are based on all standard and available engines and rear axle ratios for models with automatic transmissions.

TRAILERING EQUIPMENT

A wide selection of equipment is avail-

able for handling specific trailering jobs. Suburban and V-Jimmy can be ordered with a heavy-duty trailering equipment package that helps equip them for trailering. This factory-installed package includes: Weight-distributing platform hitch; 9500-lb capacity for Suburban, 6000-lb for V-Jimmy 7-lead wiring harness Engine oil cooler on gasoline models Automatic transmission oil cooler.

For Bonus/Crew Cab Pickups, there's a dealer-installed weight-distributing platform trailer hitch with a 7000-lb capacity. Hitches for 5th wheel trailers can be supplied by trailer manufacturers and other sources.

For complete details about recommendations and requirements for trailering, ask your GMC Truck Dealer for a 1990 Trailering Guide.

GROSS COMBINATION WEIGHT RATING BY ENGINE AND AXLE RATIO FOR AUTOMATIC TRANSMISSIONS

ENGINE	GROSS COMBINATION WEIGHT RATING, lb*								
	9,000	10,000	11,000	12,000	13,500	14,500	15,000	16,000	19,000
5.7L EFI V8 GAS	2.73	3.08	3.42	3.73	4.10	4.56	—	—	—
7.4L EFI V8 GAS	—	—	—	—	3.42	3.73	—	4.10	4.56
6.2L V8 GAS	—	—	—	—	—	—	—	—	—
DIESEL	3.08	3.42	3.73	4.10	4.56	—	—	—	—

* Includes weight of truck, trailer, passengers, cargo and equipment.

EXTERIOR COLORS

V-JIMMY



Available Conventional Two-Tone Paint (ZY2) includes deluxe moldings and related trim items (standard on SLE).



Available Special Two-Tone Paint (ZY3) includes dual-tone body side and rear decal striping keyed to body color plus hood ornament (standard on diesel models).



Available Deluxe Two-Tone Paint (ZY4) includes moldings used with Conventional Two-Tone, dual-tone body side and rear decal striping and hood ornament (standard on diesel models).

SUBURBAN



Available Conventional Two-Tone Paint (ZY2) includes deluxe moldings and related trim items (standard on SLE).

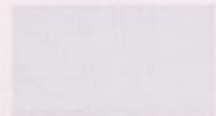


Available Special Two-Tone Paint (ZY3) includes dual-tone body side and rear decal striping keyed to body color plus hood ornament (standard on diesel models).



Available Deluxe Two-Tone Paint (ZY4) includes moldings used with Conventional Two-Tone, dual-tone body side and rear decal striping and hood ornament (standard on diesel models).

PAINT COLOR SELECTION



Summit White



Onyx Black



Smoke Blue (M)



Mojave Beige



Sunset Gold (M)*



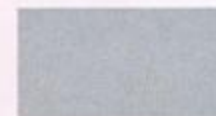
Wintergreen (M)



Fire Red



Gray (M)



Quicksilver (M)



Midnight Blue (M)

NOTE: Due to printing irregularities, colors shown may vary slightly from actual tones. Ask your dealer to show you actual paint chips. (M) = Metallic + = Secondary color only

BONUS/CREW CAB PICKUPS



Available Special Two-Tone Paint (ZY3) is offered only for dual rear wheel Bonus/Crew Cab Heavy Hauler Pickups. Includes dual-tone body side and rear decal striping plus hood ornament (standard on diesel models).



Available Deluxe Two-Tone Paint (ZY4) for single rear wheel Bonus/Crew Cab Wideside Pickups includes bright body side/rear and wheel opening moldings (standard on SLE models), hood ornament (standard on diesel models) and decal striping.

PAINT COLOR SELECTION



Frost White



Midnight Black



Midnight Blue



Wheat



Mariner Blue



Apple Red



Steel Gray (M)

NOTE: Due to printing irregularities, colors shown may vary slightly from actual tones. Ask your dealer to show you actual paint chips. (M) = Metallic

STANDARD AND AVAILABLE EQUIPMENT

EXTERIOR EQUIPMENT

MODEL TRIM LEVEL	DESCRIPTION	V-JIMMY/SUBURBAN		PICKUP	
		SLE (Std)	SLE	SLE (Std)	SLE
BUMPERS/BUMPER GUARDS	Chromed front and rear bumpers without rub strips	S	-	-	-
	Chromed front and rear bumpers with rub strips (1)	-	S	-	-
	Chromed front bumper without rub strip	-	-	S	S
	Chromed rear step type bumper	-	-	A	A
	Silver painted rear step type bumper	-	-	A	A
	Black front bumper guards	-	S	-	-
GRILLE/FRONT LAMPS	Chromed front bumper guards	-	-	A	A
	Light/dark argent painted grille and lamp bezels with GMC grille lettering and single rectangular LH/RH headlamps	S	-	S	-
LAMPS	Chromed grille and lamp bezels with dark argent paint trim, GMC grille lettering and dual rectangular LH/RH halogen headlamps	-	S	-	S
	Cargo area lamp	-	-	A	A
	Halogen headlamps	-	S	-	S
	Tool marker lamps	A 8, 10	A 8, 10	A 11	A 11
MIRRORS, DUAL REARVIEW	Black painted below eyelid type	S	S	-	-
	Black painted electric below eyelid type	A 12	A 12	-	-
	Stainless steel below eyelid type	A	A	A	A
	Stainless steel camper type	A 8	A 8	A	A
	White painted below eyelid type	-	-	S	S
	White painted west coast type	-	-	A	A
MODEL TRIM LEVEL	DESCRIPTION	V-JIMMY/SUBURBAN		PICKUP	
		SLE (Std)	SLE	SLE (Std)	SLE
MOLDINGS	Black plastic body side/rear moldings with bright trim	-	S	-	-
	Bright plastic body side/rear moldings with black trim	-	-	-	S 2
	Body color strip moldings over side doors and Suburban rear doors/tailgate	S	S	S	S
	Bright wheel opening moldings	-	S	-	S 2
ORNAMENTATION	Bright trim for front side marker lights and taillights	-	S	-	S
	Bright trim for clearance lamps on rear wheelbase extensions (dual rear wheel models)	-	-	-	S
	Hood ornament (diesel models)	S	S	S	S
	Hood ornament (gasoline models)	A 1	A 1	A 1	A 1
TOW HOOKS	Bright tailgate applique (except Suburbans)	-	S	-	S
	Aut models only	S	S	S	S
WINDSHIELD WIPERS/WASHERS	Electric, 2 speed wipers with intermittent wipe feature, wet arm type wipers	S	S	S	S
	Agent painted wheels	S	S	-	-
WHEELS/WHEEL TRIM	White painted wheels	-	-	S	S
	Bright hub caps	S	-	S 2	-
	Bright wheel covers	A	S	A	S 15
	Special bright wheel covers (2 WD dual rear wheel models)	-	-	A	A
	Aluminum or silver painted Rally wheels	A	A 1	-	-
	Aluminum or silver painted Rally wheels	A	A 1	-	-

INTERIOR EQUIPMENT

ASSIST STRAPS	Roof-mounted at outboard passenger front and center seat positions	S 8	S	-	-
	Front door closing	-	S	-	S
CIGARETTE LIGHTER WITH ASHTRAY ILLUMINATION	Power door locks and power side windows	A	A 9	A	A
	Power door locks only	A 8	S 8	-	-
	Power side windows only	-	A 8	-	-
CONVENIENCE PACKAGES	Tilt wheel and electronic speed control	A	A	A	A
	Black rubber (V-Jimmy and Pickup)	S	-	S 5	-
	Color-keyed rubber (Suburban)	S	-	-	-
	Carpeting	-	S	-	S
FLOOR COVERING, FRONT COMPARTMENT	Floor mats, color-keyed	-	S	-	S
	Black rubber (V-Jimmy and Pickup)	S	-	S 5	-
	Color-keyed rubber (Suburban)	S	-	-	-
	Carpeting	-	A 6	-	S 7
FLOOR COVERING, REAR COMPARTMENT	Floor mats, color-keyed	-	A 6	-	S 7
	Deep tinted glass all around	A	A	-	-
	Power tailgate window (V-Jimmy models on Suburbans)	S	S	-	-
	Sliding hardtop side windows	A 1	A 1	-	-
GLASS	Sliding rear window	-	-	A	A
	Tinted glass all around	S	S	A	A
	Headlamp on warning buzzer	S	S	S	S
	Headliner	S 9	S	S	S
HEATING/COOLING/DEFOGGING	Air conditioning, front	A	A	A	A
	Air conditioning, front and rear (Suburban)	A	A	-	-
	Cold climate package (gasoline models)	A	A	A	A
	Electric rear window defogger (Suburban panel rear door models)	-	A	-	-
HEADLAMP ON WARNING BUZZER	Electric tailgate defogger (Suburban tailgate models)	A	A	-	-
	Heavy duty heater/defogger	S	S	S	S
	Rear compartment heater (Suburbans)	A	A	-	-
	AM/FM stereo with seek-scan/digital clock	A	A	A	A
RADIO, ELECTRONICALLY TUNED	AM/FM stereo with seek-scan/digital clock/stereo cassette tape with search-repeat/graphic equalizer	A	A	A	A
	Radio delete	A 16	-	A 16	-
	Conventional 2-spoke	S	-	S	-
	Custom 2-spoke	-	-	-	S
STEERING WHEEL	Sport 4-spoke	-	S	-	-
	Floor-mounted (V-Jimmy)	-	S	-	-
	Floor-mounted (Suburban)	-	A 14	-	-
	Roof-mounted (Suburban)	-	A 14	-	-
STORAGE CONSOLE	Color-keyed padded LH/RH	S	S	S	S
	Color-keyed padded LH/RH	S	S	S	S
SUNSHADES	Dual electric	S	S	-	S
	Single electric	-	-	S	-
INSTRUMENT CLUSTER	Edge-type with trip odometer	S	S	S	S
	Black crackle finish with bright trim	S 9	-	S	-
INSTRUMENT CLUSTER BEZEL	Powder-tone brushed metal finish with bright trim	S 8	S 9	-	S
	Simulated woodgrain finish with bright trim	-	S 8	-	-
INSTRUMENT PANEL PAD APPLIQUE	Black crackle finish	S	-	S	-
	Powder-tone brushed metal finish	-	S 9	-	S
LAMPS	Simulated woodgrain finish with bright trim	-	S 8	-	-
	Combination front dome and reading lamp	-	S 8	-	-
	Dome lamp, front	-	-	S	S
	Dome lamp, rear	-	S 8	-	-
MIRRORS	Dome lamps, front and rear	S	S 9	-	-
	Door/tailgate-operated dome lamp switches	S	S	S	S
	Glove box	-	S	-	S
	Map (under instrument panel at center)	S	S	S	S
RADIO, ELECTRONICALLY TUNED	Underhood real type	-	S	-	S
	Prismatic type rearview	S	S	S	S
	Right hand view	-	S 13	-	S
	AM/FM stereo with seek-scan/digital clock	S	S	S	S
RADIO, ELECTRONICALLY TUNED	AM/FM stereo with seek-scan/digital clock/stereo cassette tape with search-repeat/graphic equalizer	A	A	A	A
	Radio delete	A 16	-	A 16	-
	Conventional 2-spoke	S	-	S	-
	Custom 2-spoke	-	-	-	S
STEERING WHEEL	Sport 4-spoke	-	S	-	-
	Floor-mounted (V-Jimmy)	-	S	-	-
	Floor-mounted (Suburban)	-	A 14	-	-
	Roof-mounted (Suburban)	-	A 14	-	-
STORAGE CONSOLE	Color-keyed padded LH/RH	S	S	S	S
	Color-keyed padded LH/RH	S	S	S	S
SUNSHADES	Dual electric	S	S	-	S
	Single electric	-	-	S	-
INSTRUMENT CLUSTER	Edge-type with trip odometer	S	S	S	S
	Black crackle finish with bright trim	S 9	-	S	-
INSTRUMENT CLUSTER BEZEL	Powder-tone brushed metal finish with bright trim	S 8	S 9	-	S
	Simulated woodgrain finish with bright trim	-	S 8	-	-
INSTRUMENT PANEL PAD APPLIQUE	Black crackle finish	S	-	S	-
	Powder-tone brushed metal finish	-	S 9	-	S
LAMPS	Simulated woodgrain finish with bright trim	-	S 8	-	-
	Combination front dome and reading lamp	-	S 8	-	-
	Dome lamp, front	-	-	S	S
	Dome lamp, rear	-	S 8	-	-
MIRRORS	Dome lamps, front and rear	S	S 9	-	-
	Door/tailgate-operated dome lamp switches	S	S	S	S
	Glove box	-	S	-	S
	Map (under instrument panel at center)	S	S	S	S
RADIO, ELECTRONICALLY TUNED	Underhood real type	-	S	-	S
	Prismatic type rearview	S	S	S	S
	Right hand view	-	S 13	-	S
	AM/FM stereo with seek-scan/digital clock	S	S	S	S
RADIO, ELECTRONICALLY TUNED	AM/FM stereo with seek-scan/digital clock/stereo cassette tape with search-repeat/graphic equalizer	A	A	A	A
	Radio delete	A 16	-	A 16	-
	Conventional 2-spoke	S	-	S	-
	Custom 2-spoke	-	-	-	S
STEERING WHEEL	Sport 4-spoke	-	S	-	-
	Floor-mounted (V-Jimmy)	-	S	-	-
	Floor-mounted (Suburban)	-	A 14	-	-
	Roof-mounted (Suburban)	-	A 14	-	-
STORAGE CONSOLE	Color-keyed padded LH/RH	S	S	S	S
	Color-keyed padded LH/RH	S	S	S	S
SUNSHADES	Dual electric	S	S	-	S
	Single electric	-	-	S	-
INSTRUMENT CLUSTER	Edge-type with trip odometer	S	S	S	S
	Black crackle finish with bright trim	S 9	-	S	-
INSTRUMENT CLUSTER BEZEL	Powder-tone brushed metal finish with bright trim	S 8	S 9	-	S
	Simulated woodgrain finish with bright trim	-	S 8	-	-
INSTRUMENT PANEL PAD APPLIQUE	Black crackle finish	S	-	S	-
	Powder-tone brushed metal finish	-	S 9	-	S
LAMPS	Simulated woodgrain finish with bright trim	-	S 8	-	-
	Combination front dome and reading lamp	-	S 8	-	-
	Dome lamp, front	-	-	S	S
	Dome lamp, rear	-	S 8	-	-
MIRRORS	Dome lamps, front and rear	S	S 9	-	-
	Door/tailgate-operated dome lamp switches	S	S	S	S
	Glove box	-	S	-	S
	Map (under instrument panel at center)	S	S	S	S
RADIO, ELECTRONICALLY TUNED	Underhood real type	-	S	-	S
	Prismatic type rearview	S	S	S	S
	Right hand view	-	S 13	-	S
	AM/FM stereo with seek-scan/digital clock	S	S	S	S
RADIO, ELECTRONICALLY TUNED	AM/FM stereo with seek-scan/digital clock/stereo cassette tape with search-repeat/graphic equalizer	A	A	A	A
	Radio delete	A 16	-	A 16	-
	Conventional 2-spoke	S	-	S	-
	Custom 2-spoke	-	-	-	S
STEERING WHEEL	Sport 4-spoke	-	S	-	-
	Floor-mounted (V-Jimmy)	-	S	-	-
	Floor-mounted (Suburban)	-	A 14	-	-
	Roof-mounted (Suburban)	-	A 14	-	-
STORAGE CONSOLE	Color-keyed padded LH/RH	S	S	S	S
	Color-keyed padded LH/RH	S	S	S	S
SUNSHADES	Dual electric	S	S	-	S
	Single electric	-	-	S	-

- S - Standard A - Available
 1 - Includes bright trim for front bumper rub strip plus special rub strip for Suburban rear bumper
 2 - Except models with dual rear wheels
 3 - With Special and Deluxe 2 tone paint combinations
 4 - Series 1500 models only
 5 - Color-keyed rubber for diesel engine models
 6 - Part of available rear window
 7 - Crew Cab models only
 8 - Suburban only
 9 - V-Jimmy only
 10 - Except in California
 11 - Standard on 4x4 models, not available in California on single rear wheel 2 WD models
 12 - Requires available power door locks (standard on Suburbans and power windows)
 13 - Illustrated
 14 - Part of available reclining front bucket seats
 15 - 2 WD single rear wheel models only
 16 - See your GMC Truck Dealer for details

POPULAR OPTIONS

For added driving pleasure and convenience, you can order your Suburban, V-Jimmy or Bonus/Crew Cab Pickup with a variety of available options. Most of the equipment pictured here is available on all models. Other items are listed in the chart on page 10. Your GMC Truck Dealer can tell you more about options, as well as dealer-installed accessories.



Full-feature Delco AM stereo*/FM stereo radio



Comfortilt steering wheel**



Platform trailer hitch**



SLE Suburban roof console**



Suburban front and rear air conditioning*



Full wheel covers



Aluminum wheels*



Rally wheels*

- * Requires CQ-AM* AM stereo radio broadcasts. Most AM stereo stations across the country broadcast in C-Quam, but some do not. Check with local stations for compatibility in your area.
 ** Part of a package. Ask your GMC Truck Dealer for details.
 † V-Jimmy and 1500 Series Suburban only.
 ‡ Illustration shows rear view.

TECHNICAL INFORMATION

MODEL NAME	DRIVE TYPE	SUBURBAN				BONUS-CREW CAB PICKUP AND CAB & CHASSIS	
		4 Wheel	2 Wheel	4 Wheel	2 Wheel	4 Wheel	
MODEL NAME	DRIVE TYPE	SUBURBAN				BONUS-CREW CAB PICKUP AND CAB & CHASSIS	
DRIVE TYPE	4 Wheel	2 Wheel	4 Wheel	2 Wheel	4 Wheel		
SERIES	V-1500	8-1500	8-2500	V-1500	V-2500	8-3510	V-1500
ENGINE	(see page 8; consult your GMC Truck Dealer for additional powertrain details)						
FRONT SUSPENSION	independent, coil springs (2 WD); Salisbury axle, leaf springs (4 WD)						
Capacity, lb	3600	3210 (1)	3800	3600	3800	4000	4500
Spring capacity, lb (2)	Standard 1850 (3)	1675 (4)	1900	1850 (3)	1900	2000	2250
Available	2250	-	-	2250	2250	-	-
Shock absorber diameter, in	Standard 1.00 (5)	1.00 (5)	1.26	1.00 (5)	1.26	1.26	1.26
Available	(6)	-	-	(6)	(6)	-	-
Stabilizer bar diameter, in	Standard 1.25	1.06	1.06	1.25	1.25	1.06	1.25
Available	-	-	1.25	-	-	1.25	-
REAR SUSPENSION	Salisbury axle, leaf springs						
Axle capacity, lb	3750	4000	6030	4000	5000	7500	7500
Spring capacity, lb (2)	Standard 1875	2000	2960	3000	2800	3500	3500
Available	-	-	-	-	-	3750	3750
Shock absorber diameter, in	Standard 1.00 (5)	1.00 (5)	1.26	1.00 (5)	1.26	1.26	1.26
Available	(6)	-	-	(6)	(6)	-	-
SERVICE BRAKES	hydraulic, front disc/rear drum, with rear wheel anti-lock brake system (except Bonus/Crew Cab)						
Power booster type	Gasoline vacuum	hydraulic		vacuum	hydraulic		
PARKING BRAKES	cable to rear wheels						
STEERING TYPE	power						
TIRES	steel-belted, radial-ply (All Season type on Series 1500 models)						
Standard	P235/75R15	P235/75R15	LT235/65R16E	P235/75R15	LT235/65R16E	LT235/65R16E	
Available	-	-	-	-	-	-	
FUEL TANK CAPACITY (nominal gallons)	31 (7)	various (consult your GMC Truck Dealer)				40	
BATTERY	12-volt, maintenance-free						
Cold cranking amp rating	Gasoline 630	diesel 540		dual 540			
Generator	12-volt, alternating current						
Amp rating	Standard 85 (gas; 14 (diesel)	100 (gas; 66 (diesel)				78 (diesel; 105 (gas)	
With C60 air	-	100 (gas; 66 (diesel)		78 (diesel; 105 (gas)			
With C69 air	-	78 (diesel; 105 (gas)		78 (diesel; 100 (gas)			
With C36 heater or C49 defogger (C69)	-	78 (diesel; 100 (gas)		78 (diesel; 105 (gas)			
With C36 & C49 together (C69)	-	78 (diesel; 105 (gas)		-			

- 1 - 3800 lb

OWNER BENEFITS

LOW MAINTENANCE

The technology that goes into V-Jimmy, Suburban and Bonus/Crew Cab models has contributed in many ways to reducing the time and effort required for routine service and maintenance. Consider these advanced features: □ Delco Freedom II+ battery never needs refilling with water □ Solid state integral voltage regulator built into Delcotron generator is transistorized for reliability □ Starter solenoid is integral, provides positive starter engagement □ Gasoline engine distributor has integral coil, eliminates separate maintenance □ Fuse box has tweezers-type fuse removal for easy service □ Mufflers have heavy-page outer shell and are aluminum inside and out for added durability □ Instrument cluster and heating/air conditioning controls are serviceable from the front □ Engine coolant recovery system collects excess coolant and returns it to radiator automatically when it cools □ Diesel models have water-in-fuel drain provisions □ No adjustment hydraulic clutch with manual transmissions □ Tires have built-in tread wear indicators □ See-through reservoirs for quick checks of engine coolant, windshield washer fluid and brake fluid □ No adjustments for idle speed or idle air/fuel mixture on fuel-injected gasoline engines — an on-board computer helps tune the engine as you drive □ Audible wear sensors on front disc brake pads for early warning of brake wear □ Self-adjusting front and rear brakes.

VEHICLE WARRANTY



The GM 3-year/50,000 mile BUMPER TO BUMPER PLUS WARRANTY covers repairs for any new GMC Truck, including labor and parts, to correct any defects in material or workmanship occurring during the warranty period. The complete vehicle (except tires, which are covered by their manufacturer) will be covered for 3 years or 50,000 miles, whichever comes first. After the first year or 12,000 miles, there is a \$100 deductible per repair visit. Body sheet metal rust-through from corrosion is covered for 6 years or 100,000 miles whichever comes first. There is no deductible for rust-through repairs. See your GMC Truck dealer for terms of this limited warranty.

DEALER SERVICE



Commitment Plus is the most complete joint sales and service customer satisfaction program available on trucks today. It offers the following benefits:

- A thorough pre-delivery vehicle¹ inspection
- One full tank of fuel
- Complimentary 3000-mile maintenance service including oil change and oil filter

GMC Truck and GMC Truck Dealerships are truly committed to making our trucks easy to live with. Our customers' total satisfaction is indeed our goal! Applies to retail sales of V-Jimmy and Suburban models only.

When your new V-Jimmy, Suburban or Bonus/Crew Cab needs service, you can count on the professionals at any of approximately 2500 GMC Truck Dealerships in the USA.



GM-CAMS is now installed at more than 400 GMC Truck participating dealerships. GM-CAMS is an abbreviation for the Computerized Automotive Maintenance System. It is designed to diagnose conditions related to electronic system and powertrain drivability problems in late-model GM vehicles. GM-CAMS is not a replacement for other diagnostic tools, such as those used to diagnose traditional mechanical functions. CAMS main function is to isolate malfunctions in electronic systems controlled by the vehicles' on-board computers. In addition, GM-CAMS permits access to a storehouse of information frequently used by technicians for routine repair, other than electronics.

FINANCING & LEASING

GMAC

When it comes to financing or leasing a new GM vehicle, General Motors Acceptance Corporation can make things easy. With GMAC, the entire transaction is handled right in the dealer's showroom. Rates are competitive and terms are tailored to fit your circumstances. You can even choose your own monthly payment date.



Ask your dealer for a copy of the GMC Truck brochure: "Off-Road Driving With Your GMC Truck" before traveling off-road. This brochure is filled with helpful tips and facts on off-road driving.

If your GMC Truck dealer does not have a copy, please call 1-800-VALUE90.

For many people, leasing a new truck through GMAC is an ideal way to suit their transportation needs. Ask your GMC Truck Dealer for details.

IMPORTANT: A WORD ABOUT THIS CATALOG. We have tried to make this catalog as comprehensive and factual as possible. We reserve the right, however, to make changes at any time, without notice, in prices, colors, materials, equipment, specifications, models and availability. Also, tires shown in illustrations are supplied by various manufacturers. Since some information may have been updated since the time of printing, please check with your GMC Truck Dealer for complete details.

A WORD ABOUT ENGINES.

GMC Trucks are equipped with engines produced by different operating units of GM, its subsidiaries or suppliers to GM worldwide.

A WORD ABOUT ASSEMBLY OF

GM TRUCKS. GMC Trucks are assembled by different operating units of General Motors, its subsidiaries or suppliers to GM worldwide. GMC Trucks incorporate thousands of components produced by different operating units of GM, its subsidiaries or suppliers to GM worldwide. We sometimes find it necessary to produce GMC Trucks with different or differently sourced components than originally scheduled. All such components have been approved for use in GMC Trucks and will provide the quality performance associated with the GMC Truck name. Since some options may be unavailable when your vehicle is assembled, we suggest you verify that your vehicle includes the equipment you ordered or, if there are changes, that they are acceptable to you.

A WORD ABOUT UPDATED

SERVICE INFORMATION. GMC Truck Division regularly sends its dealers useful service bulletins about GMC Truck products. GMC Truck Division monitors product performance in the field. We then prepare bulletins for servicing our products better. Now you can get these bulletins, too. Ask your dealer. To get ordering information, call toll free 1-800-551-4121.

A WORD ABOUT CORROSION

PROTECTION. GMC Trucks are designed and built to resist corrosion. All body sheet metal components are warranted against rust-through corrosion for 6-years/100,000 miles. Application of additional rust inhibiting materials is not required under the corrosion coverage and noise is recommended.

GMC, GMAC, Chevy, Jimmy and Suburban are registered trademarks of General Motors Corporation. GMC Truck and Computerized Plus/GMC Truck logo are trademarks of General Motors Corporation.

© 1989 General Motors Corporation. All rights reserved.

GMC
TRUCK

