

2011 SIENNA

 TOYOTA
moving forward



“DADDY LIKE.” “MOMMY LIKE.”

One look at the wider stance of the all-new Sienna says it all: This is a vehicle designed to turn corners — and turn heads. It's been totally redesigned to redefine what driving a minivan says about you. Along with its more spacious interior, powerful yet efficient engines and enough technology to impress a rocket scientist, Sienna offers something most minivans don't: a responsive driving feel wrapped in a sleek shape. And Sienna is assembled in America, with among the highest levels of North American content in the segment.¹ The 2011 Toyota Sienna. Moving Forward.

1. Based on AALA preliminary estimate.





Limited shown in Predawn Gray Mica.

CHOOSE YOUR STYLE.

The beauty is in the details: Its exterior door rails, for example, are hidden from view, helping to give Sienna a clean, uncluttered look. Five trim levels — Sienna, LE, SE,¹ XLE and Limited — plus a choice of a 4-cylinder¹ or V6 engine and available All-Wheel Drive (AWD) let you choose what works for you.

SE¹

From its unique front and rear bumpers and sport mesh grille to its 19-inch super chrome alloy wheels and smoked sport-trimmed LED taillamps, Sienna SE takes its design cues from sports sedans, not minivans.

1. Sienna SE and 4-cylinder models expected availability spring 2010.



SE¹ shown in Silver Sky Metallic with available Preferred Package and power tilt/slide moonroof.

LIMITED

A Sienna for those who want the best of everything, the Limited comes standard with leather-trimmed seating materials, dual moonroof, Smart Key System,¹ front and rear parking sonar and a sliding center console. Limited is also available with packages that include features such as a Dual-View Entertainment Center,² rear Panorama Camera³ with on-screen backup guides, Dynamic Radar Cruise Control (DRCC),⁴ rain-sensing windshield wipers and High Intensity Discharge (HID) headlamps with an Automatic High Beam feature.⁵

1. See footnote 29 in Disclaimers section. **2.** See footnote 28 in Disclaimers section. **3.** See footnote 20 in Disclaimers section. **4.** See footnote 40 in Disclaimers section. **5.** See footnote 13 in Disclaimers section.



Limited shown in Predawn Gray Mica with available Premium Package, Convenience Package and Advanced Technology Package.




Limited interior shown in Bisque with available Premium Package, Convenience Package and Advanced Technology Package.

IMPROVE YOUR VIEW.

The wood accents of the Sienna Limited interior signal you're in the lap of luxury. The "60/60" overlapping design of the dash reinforces that feeling, giving both the driver and front-seat passenger joint custody of the center console's switches and controls. And here's something to put drivers at ease: An available rear Panorama Camera¹ helps you handle the hassles of backing out of driveways and parking. Choose either a 180-degree wide-angle view or a regular view of the area behind the vehicle, then see it displayed on the available DVD navigation system's² screen. The image can be shown in three modes: Projected Path, Parking Assist, and Distance Guide.

1. See footnote 20 in Disclaimers section. 2. See footnote 25 in Disclaimers section.

 180-degree wide-angle view

 Regular view





SE¹ interior shown in Dark Charcoal with available Preferred Package and power tilt/slide moonroof.

CHANGE PERCEPTIONS.

Are all minivans alike? Take a look at Sienna SE¹ and decide for yourself. Outside, large-diameter 19-inch 6-spoke alloy wheels create a bold, confident stance. Inside, it's more like an 8-passenger sports car. It features an exclusive sport meter and seat upholstery, chrome accents and a piano-black finish to achieve a sporty style backed by substance. It's fun to drive, too. A sport-tuned lowered suspension and sport-calibrated Electric Power Steering (EPS) provide more direct feedback and precise handling. And of course, SE offers Bluetooth^{®2} wireless technology and iPod[®]-compatible³ audio.

1. See footnote 12 in Disclaimers section. 2. See footnote 24 in Disclaimers section. 3. See footnote 2 in Disclaimers section.

LOUNGE SEATING¹

LIMITED

With Sienna Limited's 7-passenger, dual moonroof interior, everyone in the family can feel like their seat is the best seat. The second-row lounge seating features captain's chairs that recline, dual armrests that adjust, maplights that swivel and climate controls at your fingertips. An unusually long 23-inch sliding range for Sienna's second-row seats creates an ease of ingress and egress through the wide dual power sliding side doors. And once inside, passengers will find comfortable accommodations. Need room for cargo? Simply slide the seats out of the way or remove them.

¹ See footnote 30 in Disclaimers section.



LOUNGE SEATING¹

On Sienna XLE AWD and Limited, the second row features adjustable ottomans¹ for both captain's chairs.

MORE POWER TO YOU.

XLE

1 DUAL POWER SLIDING DOORS
The all-new Sienna's available dual power sliding side doors open wider, so it's easier to step in and out, or load and unload cargo. Operating the doors is easy using a button on the remote keyless entry or available Smart Key¹ fobs, the interior or exterior door handles, or switches on the overhead console and interior center pillar.

2 POWER REAR DOOR
The available power rear door opens and closes via the remote keyless entry or available Smart Key¹ fobs, or a switch on the overhead console. For closure, there's a button on the rear door. A one-second delay between the door reaching the bottom position and fully closing provides jam protection.



1



2

5 ↓



3



4



6

3 DUAL MOONROOF
On Sienna Limited, a dual moonroof feature is standard, to create an airy and open interior atmosphere. The front moonroof tilts open and slides over the roof, while the rear moonroof slides into the ceiling.

4 DUAL-VIEW ENTERTAINMENT CENTER²
With its 16.4-inch screen, the available Dual-View Entertainment Center can be used two ways: single screen or split screen — a DVD movie on one side or another movie or a video game using a compatible game console on the other. Parental control? You can control the Dual-View Entertainment Center from the instrument panel. An external audio and video input jack lets passengers enjoy movies and video games supplied from the center console. And they can listen using Sienna's built-in speakers or wireless headphones³

5 POWER SPLIT & STOW 3RD ROW™ SEAT
The power third-row seat in Sienna Limited FWD adapts easily to your needs. It splits 60/40. Or when you need all the space to carry cargo instead of passengers, the seat quickly folds and retreats into an under-floor storage compartment. It's all done at the touch of buttons.

6 SLIDING CENTER CONSOLE
To sync up with the long sliding range of the second-row seats, Sienna XLE AWD and Limited have a center console that expands and slides rearward. So cup holders stay within easy reach of the second-row passengers.

1. See footnote 29 in Disclaimers section. **2.** See footnote 28 in Disclaimers section. **3.** See footnote 3 in Disclaimers section.



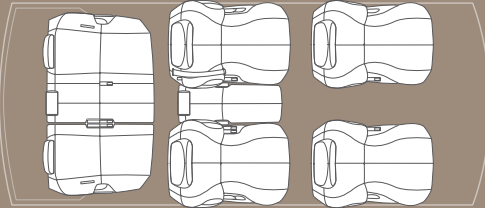
XLE interior shown in Light Gray with available Premium Package.

PUT YOURSELF IN A TIME-OUT.

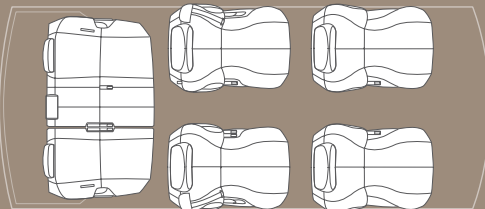
Deserve a time-out from the stress of being the world's best parent? Step inside the redesigned Sienna. That feeling of comfort you're enjoying is thanks to our engineers, who made the interior wider and longer without increasing the exterior dimensions. Whether you're in the driver's seat or count yourself as a member of the crew, you'll feel like you've got the room to relax. Head room, leg room, hip room: Sienna exceeds the needs of you and your family in a way that's versatile, flexible and beautifully designed.

GO CONFIGURE

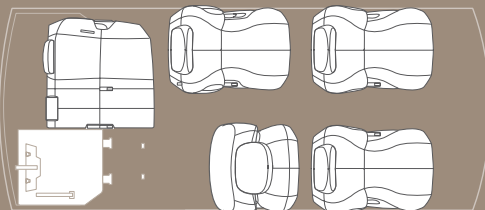
Arrange your Sienna for maximum occupancy or a combination of seating and cargo space!¹



8-passenger seating



7-passenger lounge seating²



7-passenger seating with tip-up and long-slide second row

MAXIMUM SEATING

	FWD	AWD
Sienna	7	–
LE, XLE	8	7
SE	8	–
Limited	7	7



1



2



3

1 SECOND-ROW TIP-UP AND LONG SLIDE

To create a huge, easily accessible cargo area in the middle section of Sienna, the seat cushions of the second row tip up,³ allowing the entire row to slide farther forward for cargo or rear passenger comfort.

2 STOWABLE CENTER PASSENGER SEAT

The middle seat in the second row is designed for maximum versatility. Fold it upright, and it's a comfortable, well-cushioned seat. Or remove it and store it in the cargo area storage compartment for a passageway to the third row.

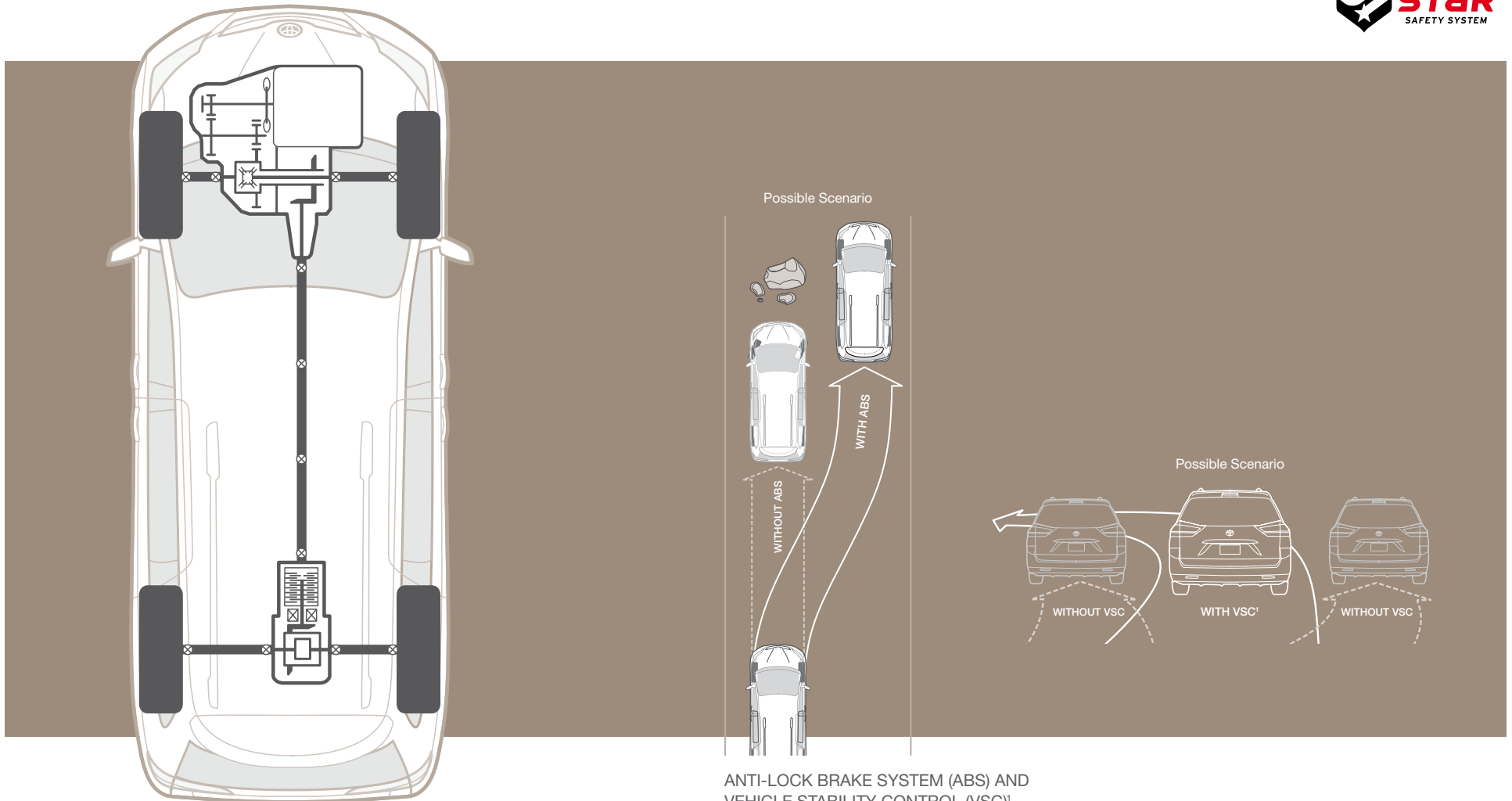
3 STORAGE SPACE

The floor behind the third-row seat offers a storage well deep enough to serve as a safe haven for valuable items you want stored (available accessory cargo organizers shown).

1. Cargo and load capacity limited by weight and distribution.
2. See footnote 30 in Disclaimers section. **3.** Tip-up feature not available on XLE AWD and Limited models.

STAR SAFETY SYSTEM™

The 2011 Sienna was designed around the idea that keeping your family safe is the ultimate parental responsibility. Which is why it surrounds you with Toyota's Star Safety System,™ a combination of five safety features that are standard on every Sienna: Vehicle Stability Control (VSC)¹ integrates controls that coordinate the Anti-lock Brake System (ABS) with Electronic Brake-force Distribution (EBD), Brake Assist,² Traction Control (TRAC) and Electric Power Steering (EPS). They're called "active" safety features because they're designed to proactively respond in certain situations to help prevent accidents from occurring in the first place.



ALL-WHEEL DRIVE (AWD)

On AWD models, an Active Torque Control All-Wheel Drive system has been adopted. With an electromagnetically controlled coupling positioned at the front of the rear differential, this AWD system uses information sent from various sensors to transmit only the necessary amount of torque to the front and rear wheels.

ANTI-LOCK BRAKE SYSTEM (ABS) AND VEHICLE STABILITY CONTROL (VSC)¹

Vehicle Stability Control (VSC) counteracts front or rear wheelslip during turns to help restore driving control. The Anti-lock Brake System (ABS) helps avoid wheel lockup and helps maintain steering control during hard, straight-line braking or slippery conditions.

1. See footnote 33 in Disclaimers section. 2. See footnote 34 in Disclaimers section.



MUDDY SURFACE

If the driver applies excessive pressure to the accelerator, Traction Control (TRAC) helps prevent wheel slippage on all kinds of surfaces.

GRAVEL SURFACE

No matter the surface of the road, standard Electronic Brake-force Distribution (EBD) optimizes the amount of brake force sent to each wheel. Sensors read the vehicle load in Sienna and send the appropriate brake force to each wheel.

WET SURFACE

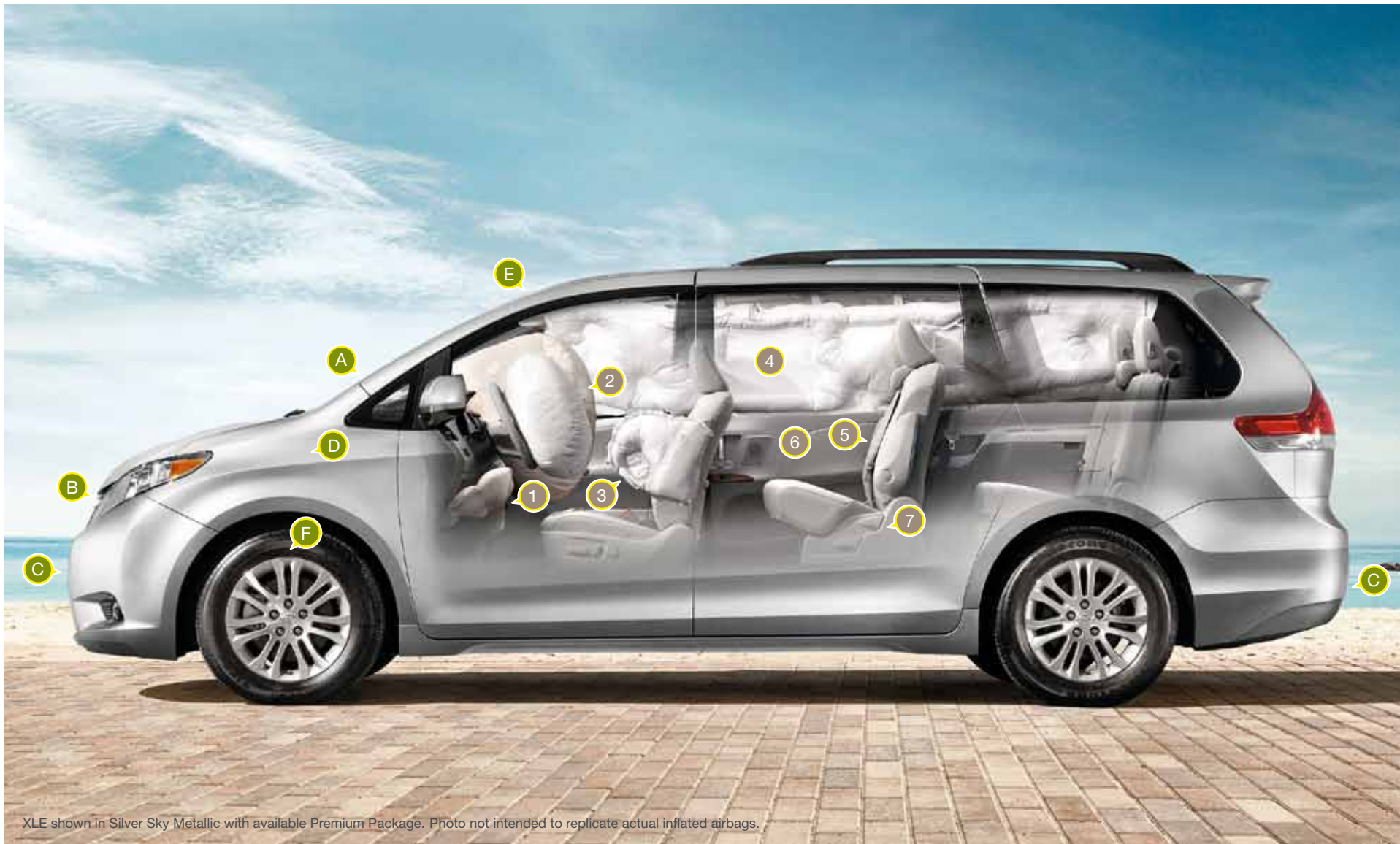
The computer-controlled Anti-lock Brake System (ABS) modulates brake pressure when braking hard or when braking on a slippery surface, helping to avoid wheel lockup and maintain steering control.

SLUSHY SURFACE

In winter conditions, every Sienna comes prepared: Vehicle Stability Control (VSC)¹ helps prevent the vehicle from slipping sideways as a result of losing traction while driving, cornering or stopping.

XLE shown in South Pacific Pearl with available All-Wheel Drive (AWD) and available Premium Package.

1. See footnote 33 in Disclaimers section.



XLE shown in Silver Sky Metallic with available Premium Package. Photo not intended to replicate actual inflated airbags.

TECHNOLOGY SERVES.

You serve everyone else's needs. Isn't it time somebody served yours? Sienna XLE and Limited use sonar¹ to help you park and sensors to help in other ways. On Sienna Limited, for example, the available rain-sensing wipers use a sensor to detect the amount of rainfall and optimally adjust the wiper interval and speed automatically, helping reduce the effort required by the driver. And of course, airbag sensors² stand silent watch over you and your family, ready to deploy Sienna's seven airbags as needed in the event of certain types of collisions.

1. Front and rear sonar standard on Limited. Rear sonar available on XLE. **2.** See footnote 35 in Disclaimers section.

Rain-Sensing Wipers

How hard is it raining? On Sienna Limited, this available feature uses a sensor to detect the amount of rainfall, then adjusts the wiper interval and speed automatically. So the driver can concentrate on the road, not the windshield.

A

Pre-Collision System (PCS)³

The available Pre-Collision System on Sienna Limited is designed to utilize the vehicle's radar to recognize if a frontal collision is unavoidable and automatically apply the brakes and retract the front seatbelts, to help lessen collision severity.

D

Automatic High Beam¹

To help ease the strain of driving at night, Sienna Limited offers an available Automatic High Beam system. It detects the headlights of oncoming vehicles or the taillights of vehicles traveling ahead of you, then automatically switches between the high beams and low beams as needed.

B

Safety Connect™⁴

Via Toyota's dedicated 24/7 call center, Safety Connect™ offers subscribers helpful features such as Automatic Collision Notification, Stolen Vehicle Location, Emergency Assistance (SOS), and Roadside Assistance. The Safety Connect™ button offers the reliability of embedded cellular and GPS technology.



E

Front and Rear Parking Sonar²

Sienna uses available sonar to help you guide the vehicle into parking spots. From locations within the front and rear bumpers, the sonar helps gauge the area in a parking space to help drivers during parking maneuvers.

C

Hill Start Assist Control (HAC)⁵:

When you're stopped on a steep hill, Sienna Limited's available Hill Start Assist Control, or HAC, detects if the wheels roll backward and then gently applies the brakes, helping give the driver time to engage the accelerator.

F

1 DRIVER'S KNEE AIRBAG⁶

The standard safety features on the all-new 2011 Sienna include a segment-only⁷ driver's knee airbag.

2 ADVANCED AIRBAG SYSTEM⁶

In a collision, the standard dual stage front airbag system senses impact severity while adjusting airbag deployment accordingly.

3 SIDE AIRBAGS⁶

Sienna comes standard with front seat-mounted side airbags.

4 THREE-ROW SIDE CURTAIN AIRBAGS⁶

The side curtain airbags that are standard on Sienna cover the length of the cabin from the front seats to the third-row seats.

5 SEATBELTS

Sienna features a 3-point Emergency Locking Retractor (ELR) seatbelt for the driver's seat and Automatic/Emergency Locking Retractors (ALR/ELR) for all passenger belts.

6 SIDE-IMPACT DOOR BEAMS

Within each of Sienna's four doors are steel beams designed to help protect the occupants in the event of a side-impact collision.

7 LATCH

Short for Lower Anchors and Tethers for Children, LATCH includes lower anchors on outboard second-row seats and the middle seat in the third row.

1. See footnote 13 in Disclaimers section. 2. Front and rear sonar standard on Limited. Rear sonar available on XLE. 3. See footnote 39 in Disclaimers section. 4. See footnote 18 in Disclaimers section. 5. See footnote 42 in Disclaimers section. 6. See footnote 35 in Disclaimers section. 7. Based on information from Edmunds.com for the 2010 minivan EPA class as of January 11, 2010.

ENGINEERED BY A SPORTS CAR FANATIC.

Our chief engineer for the all-new Sienna saw no reason a minivan couldn't have the sporty feel of a performance car. So he insisted on responsive power. Sienna offers it in two forms: a new fuel-efficient 2.7-liter inline-4 engine¹ and an available 266-hp 3.5-liter V6. A gated shift lever on the instrument panel invites the driver to engage the 6-speed automatic transmission with sequential shift mode. Electric Power Steering (EPS) creates a smoother, more direct steering feel. And the shape of the lightweight, highly rigid body is aerodynamically optimized to enhance Sienna's handling characteristics. It all comes together seamlessly for a driving experience unlike any you've had behind the wheel of a minivan.

ECO DRIVING INDICATOR

The power and torque of the two available engines will invite spirited driving. To help you drive in an economically responsible manner, there's an Eco Driving Indicator on the instrument meter and on the available Multi-Information Display. It shows you when your right foot is getting the upper hand, so you can back off a bit to achieve better fuel economy.

MPG

With refined aerodynamics, engine efficiency optimized by dual Variable Valve Timing with intelligence (VVT-i) and a smooth-shifting 6-speed automatic transmission, the all-new Sienna has the best mpg ratings of any 7- or 8-passenger van.²

1. Sienna SE and 4-cylinder models expected availability spring 2010. **2.** Based on 2011 Sienna 4-cylinder engine and mpg estimates determined by Toyota. Actual mileage will vary.



SE¹ shown in Blizzard Pearl with available Preferred Package and power tilt/slide moonroof.

SEATS UP TO EIGHT. AND SUITS NEARLY EVERYONE.

Like we said, the all-new Sienna was designed to help redesign you. And what better way to put a new spin on things than by adding accessories to your Sienna. Whether it's gear for the on-the-go family or just something to make your Sienna more, well, yours, these Genuine Toyota accessories will do the trick.



AUTO ACCESS SEAT

Sienna LE and XLE are available with an innovative, industry-first, factory-installed Auto Access Seat. Designed for anyone who may need assistance getting in or out of a vehicle, the Auto Access Seat extends and retracts in the second-row position at the push of a button on either the remote or the seat itself. Dealer special order required.



ACCESSORIES

Add a personal touch to your Sienna with Genuine Toyota accessories. Some accessories may not be available in all regions of the country. See your Toyota dealer for details.

- Ashtray kit
- Ball mount
- 1 BLU Logic® Hands Free System**
- 2 Body side moldings**
- 3 Cargo net**
- Cargo organizer
- Cargo tote
- Carpet floor mats
- Doorsill protectors

- Emergency assistance kit
- First aid kit
- Interface kit¹ for iPod®²
- Mudguards
- 4 Paint protection film**
- 5 Rear-seat entertainment**
- Remote Engine Starter
- 6 Roof rack cross bars**
- Tow hitch

- Trailer ball
- VIP security system – RS3200 Plus
- Wheel locks
- Wire harness
- Wireless headphones³
- XM® Radio⁴

See numbered footnotes in Disclaimers section.

COLOR



BLACK
Bisque, Light Gray or Dark Charcoal⁵ interior



PREDAWN GRAY MICA
Bisque, Light Gray or Dark Charcoal⁵ interior



SOUTH PACIFIC PEARL
Bisque, Light Gray or Dark Charcoal⁵ interior



SILVER SKY METALLIC
Bisque, Light Gray or Dark Charcoal⁵ interior



CYPRESS PEARL⁶
Bisque or Light Gray interior



BLIZZARD PEARL^{7, 8}
Bisque or Light Gray interior



SALSA RED PEARL⁶
Bisque or Light Gray interior



SUPER WHITE⁹
Bisque, Light Gray or Dark Charcoal⁵ interior



SANDY BEACH METALLIC⁶
Bisque interior

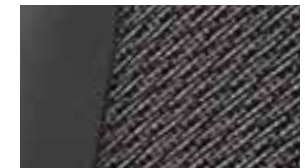
FABRIC/LEATHER



Sienna fabric in Bisque



Sienna fabric in Light Gray



SE¹⁰ leatherette with sport fabric inserts in Dark Charcoal



LE easy-clean fabric in Bisque



LE easy-clean fabric in Light Gray



XLE textured leather in Bisque



XLE textured leather in Light Gray



Limited two-tone leather in Bisque



Limited two-tone leather in Light Gray

WHEEL



Sienna and LE 17-in. 5-spoke alloy wheel



LE AWD, XLE AWD and Limited 18-in. 10-spoke machine-finished alloy wheel



SE 19-in. 6-spoke super chrome-finished alloy wheel



XLE 17-in. 7-spoke machine-finished alloy wheel


See numbered footnotes in Disclaimers section.

FEATURES¹¹

EXTERIOR	SIENNA	LE	SE ¹²	XLE	LIMITED	SIENNA	LE	SE	XLE	LIMITED
Projector-beam halogen headlamps with auto-off feature and Daytime Running Lights (DRL) with manual on/off feature	S	S	-	S	S	-	S	S	S	-
Projector-beam halogen headlamps with smoked sport trim and auto-off feature and Daytime Running Lights (DRL) with manual on/off feature	-	-	S	-	-	-	-	-	-	S
High Intensity Discharge (HID) headlamps with manual level control, auto on/off feature, Daytime Running Lights (DRL) with manual on/off feature and Automatic High Beam ¹³	-	-	-	-	P	-	-	-	-	S
Integrated wide-angle front fog lamps	-	-	S	S	S	-	S	S	S	S
Active Torque Control All-Wheel Drive system	-	O ¹⁴	-	O	O	-	P ¹⁵	P	S	S
High Solar Energy-Absorbing (HSEA) glass on windshield and driver and front passenger windows	S	S	S	S	S	S	S	-	-	-
Washer-linked variable intermittent front windshield wipers	S	S	S	S	S	-	-	-	S	-
Rain-sensing washer-linked variable intermittent windshield wipers	-	-	-	-	P	-	O ^{14,17}	-	O ¹⁷	S
Front grille with chrome surround	-	S	-	-	-	-	-	S	-	-
Sport mesh front grille with smoked chrome surround	-	-	S	-	-	-	-	S	S	S
Gray metallic front grille with chrome surround	-	-	-	S	-	S	S	-	S	S
Satin chrome front grille with chrome surround	-	-	-	-	S	-	-	S	-	-
Color-keyed door handles	-	S	S	S	-	-	-	S	-	-
Chrome-accented outside door handles	-	-	-	P	S	S	S	S	S	-
Color-keyed front and rear underbody spoilers and side rocker panels	-	-	S	-	-	-	-	-	P	S
Dual sliding side doors	S	S	-	-	-	-	P ¹⁵	P	S	-
Dual power sliding side doors	-	P ¹⁵	S	-	-	-	-	-	P	S
Dual power sliding side doors and power rear door	-	-	P	S	S	S	S	S	S	S
Power outside mirrors	S	-	-	-	-	O ¹⁴	O ¹⁴	O	S	S
Color-keyed power heated outside mirrors	-	S	S	S	-	-	S	S	S	-
Color-keyed power foldable, electrochromic, reverse-linked heated outside mirrors with memory, puddle lamps and turn signal indicators	-	-	-	-	S	-	-	-	-	S
Power tilt/slide moonroof	-	-	O	S	-	-	-	O	S	-
Dual moonroof with front power tilt/slide and rear slide	-	-	-	-	S	-	-	-	-	S
Privacy glass on rear windows	-	S	S	S	S	-	S	S	S	S
Roof rails	-	P ¹⁵	P	S	S	-	P ¹⁵	P	S	S
17-in. 5-spoke alloy wheels with P235/60R17 tires	S	S	-	-	-	-	-	-	-	-
17-in. 7-spoke machine-finished alloy wheels with P235/60R17 tires	-	-	-	-	S	-	-	-	S	-
18-in. 10-spoke machine-finished alloy wheels with P235/55R18 tires ¹⁶	-	O ^{14,17}	-	O ¹⁷	S	-	-	-	-	-
19-in. 6-spoke super chrome-finished alloy wheels with P235/50R19 tires	-	-	S	-	-	-	-	S	-	-
Rear bumper protector	-	S	S	S	S	-	S	S	S	S
Color-keyed rear spoiler with Center High-Mount Stop Lamp (CHMSL) and integrated concealed intermittent rear window wiper	S	S	S	S	S	-	S	S	S	S
LED (light-emitting diode) tail and stop lamps	S	S	-	S	S	-	-	-	S	-
LED (light-emitting diode) tail and stop lamps with smoked sport trim	-	-	S	-	-	-	-	S	-	-
Mast antenna	S	S	S	S	-	-	-	-	P	S
In-glass AM/FM antenna	-	-	-	-	P	-	-	-	P	S
Roof-mounted XM [®] Radio ⁴ antenna	-	P ¹⁵	P	S	-	-	-	-	P	S
Roof-mounted fin-type XM [®] Radio ⁴ /Safety Connect [™] 18 antenna	-	-	-	-	P	-	-	-	P	S
Heavy-duty rear window defogger with timer	S	S	S	S	S	-	-	-	-	-
Towing Prep Option ¹⁹ – 3500-lb. towing capacity	O ¹⁴	O ¹⁴	O	S	S	-	-	-	-	-
INTERIOR										
Tilt/telescopic steering wheel	S	S	-	-	-	-	-	-	-	-
Tilt/telescopic steering wheel with audio, telephone and voice-command controls	-	P ¹⁵	-	-	-	-	-	-	-	-
Textured leather-trimmed tilt/telescopic steering wheel	-	-	S	-	-	-	-	-	-	S
Textured leather-trimmed tilt/telescopic steering wheel with audio, telephone and voice-command controls	-	-	P	S	-	-	-	-	-	-
Wood-grain-style and leather-trimmed tilt/telescopic steering wheel with audio, telephone and voice-command controls	-	-	-	-	S	-	-	-	-	S
Analog meter with speedometer, tachometer, coolant temperature and fuel gauges; LCD odometer, shift sequence and twin tripmeters	S	S	-	-	-	-	-	-	P	P
Optitron meter with speedometer, tachometer, coolant temperature and fuel gauges; LCD odometer, shift sequence and twin tripmeters	-	-	-	S	S	-	-	-	-	-
Sport meter with speedometer, tachometer, coolant temperature and fuel gauges; LCD odometer, shift sequence and twin tripmeters	-	-	S	-	-	-	-	-	-	-
Eco Driving Indicator	S	S	S	S	S	-	-	-	S	S
Cruise control	S	S	S	S	S	-	-	-	S	S
3.5-inch TFT Multi-Information Display with customizable settings, backup camera, ²⁰ clock, outside temperature, Eco Driving Indicator Zone display, open door indicator and cruise information	-	P ¹⁵	S	-	-	-	-	-	-	-
3.5-inch TFT Multi-Information Display with customizable settings, backup camera, ²⁰ clock, outside temperature, air conditioning indicator for front and rear seats, Eco Driving Indicator Zone display, open door indicator and cruise information	-	-	P	S ²¹	S ²¹	-	-	-	-	-
Panorama Camera, ^{20,22} including integrated backup camera with two views (regular and wide-angle) and on-screen backup guides	-	-	-	P	P	-	-	-	-	-
AM/FM/MP3 CD player, four speakers, XM compatible ⁴ (additional hardware and subscription required), auxiliary audio jack and auto sound leveling	S	S	-	-	-	-	-	-	-	S
AM/FM/MP3 CD player, six speakers, XM compatible ⁴ (additional hardware and subscription required), auxiliary audio jack and auto sound leveling	-	-	S	-	-	-	-	-	-	-
AM/FM/MP3 CD player, six speakers, XM [®] Radio ⁴ (includes 90-day trial subscription), auxiliary audio jack, USB ²³ port with iPod [®] 2 connectivity, hands-free phone capability and music streaming via Bluetooth [®] 24 wireless technology, Vacuum Fluorescent Display and auto sound leveling	-	P ¹⁵	P	S	-	-	-	-	-	-
JBL [®] AM/FM/MP3 6-disc CD changer, ten speakers, XM [®] Radio ⁴ (includes 90-day trial subscription), auxiliary audio jack, USB ²³ port with iPod [®] 2 connectivity, hands-free phone capability and music streaming via Bluetooth [®] 24 wireless technology, Vacuum Fluorescent Display and auto sound leveling	-	-	-	-	-	-	-	-	-	S
Voice-activated touch-screen DVD navigation system ²⁵ with Panorama Camera ²⁰ including integrated backup camera with two views (regular and wide-angle) and on-screen backup guides, JBL [®] AM/FM/MP3 4-disc CD changer, ten speakers, XM [®] Radio ⁴ with XM NavTraffic [®] 25 (includes 90-day trial subscriptions), auxiliary audio jack, USB ²³ port with iPod [®] 2 connectivity, hands-free phone capability and music streaming via Bluetooth [®] 24 wireless technology, and auto sound leveling	-	-	-	-	P	-	-	-	P	P
Tri-zone CFC-free air conditioning with air filter, individual temperature settings for driver, front passenger and rear-seat passengers, and rear control panel	S	S	S	-	-	-	-	-	-	-
Tri-zone CFC-free automatic climate control with air filter, individual temperature settings for driver, front passenger and rear-seat passengers, and rear control panel	-	-	P	S	S	-	-	-	-	-
Auto-dimming electrochromic rearview mirror with compass and HomeLink [®] 26 universal transceiver	-	P ¹⁵	-	S	S	-	-	-	-	-
Dual adjustable sun visors with illuminated vanity mirrors	S	S	S	S	S	-	-	-	-	-
Overhead console with maplights for driver and front passenger, side door controls, door light setting, dome light controls for all seating positions, conversation mirror/sunglass holder and microphone	-	P ¹⁵	-	-	-	-	-	-	-	-
Overhead console with moonroof controls, side and rear door controls, maplights for driver and front passenger, door light setting, dome light controls for all seating positions, conversation mirror/sunglass holder and microphone	-	-	P ²⁷	S	-	-	-	-	-	-
Overhead console with Safety Connect [™] 18 front and rear moonroof controls, side and rear door controls, maplights for driver and front passenger, door light setting, dome light controls for all seating positions, roof illumination, conversation mirror/sunglass holder and microphone	-	-	-	-	-	-	-	-	-	S
Center lower floor tray	S	S	S	S	S	-	-	-	-	-
Fixed center console with illuminated storage compartment, two front illuminated cup holders and two rear cup holders	-	P ¹⁵	P	-	-	-	-	-	-	-

See numbered footnotes in Disclaimers section.

FEATURES

INTERIOR (continued)	SIENNA	LE	SE	XLE	LIMITED	SIENNA	LE	SE	XLE	LIMITED
Wood-grain-style fixed center console with illuminated storage compartment, two front illuminated cup holders and two rear cup holders	-	-	-	S	-	-	-	P	S	-
Sliding center console with illuminated storage compartment, two front illuminated cup holders and two rear cup holders	-	-	-	O ¹⁷	S	-	-	-	P	S
Dual-View Entertainment Center ²⁸	-	-	-	P	P	S	S	S	S	S
6 (8 on 8-passenger models) cup holders	S	S	S	-	-	S	-	-	-	-
10 (12 on 8-passenger models) cup holders	-	P ¹⁵	P	S	S	-	O ^{14,17}	-	-	-
Upper glove compartment and lockable lower glove compartment	S	S	S	S	S	-	S	-	-	-
Front and rear door map pockets with integrated bottle holders	S	S	S	S	S	-	S	-	-	-
Fabric-trimmed 6-way driver's captain's chair; 4-way front passenger captain's chair	S	-	-	-	-	-	-	S	-	-
Easy-clean fabric-trimmed 8-way power driver's captain's chair with power lumbar support and seatback pocket; 4-way front passenger captain's chair with seatback pocket	-	P ¹⁵	-	-	-	-	-	S	-	-
Leatherette-trimmed 8-way power driver's captain's chair with sport fabric inserts, power lumbar support and seatback pocket; 4-way front passenger captain's chair with seatback pocket	-	-	S	-	-	-	-	-	S	-
Textured leather-trimmed 8-way power driver's captain's chair with power lumbar support and seatback pocket; 4-way front passenger captain's chair with seatback pocket	-	-	-	S	-	-	-	-	O ¹⁷	-
Two-tone leather-trimmed 8-way power driver's captain's chair with driver memory function, power lumbar support and seatback pocket; 4-way front passenger power captain's chair with seatback pocket	-	-	-	-	S	-	-	-	-	S
Heated driver's and front passenger seats with adjustable temperature control	-	-	-	S	S	-	-	-	P	P
Power windows with auto up/down, jam protection in all positions and retained-power features with manual rear quarter windows	S	S	S	-	-	-	P ¹⁵	P	S	S
Power windows with auto up/down, jam protection in all positions and retained-power features with power-operated rear quarter windows	-	-	-	S	S	S	S	S	S	S
Power door locks with shift-activated locking feature and anti-lockout feature	S	S	S	S	S	S	S	S	S	S
Remote keyless entry with lock, two-stage unlocking and panic function	S	S	-	-	-	S	S	S	S	S
Remote keyless entry with lock, two-stage unlocking, panic function and power sliding side door controls	-	P ¹⁵	S	-	-	S	S	S	S	S
SAFETY AND CONVENIENCE										
 Star Safety System™ — includes Vehicle Stability Control (VSC) ³³ with Traction Control (TRAC), Anti-lock Brake System (ABS) with Electronic Brake-force Distribution (EBD) and Brake Assist ³⁴	S	S	S	S	S	S	S	S	S	S
Driver front airbag and front passenger airbag with Advanced Airbag System ³⁵	S	S	S	S	S	S	S	S	S	S
Driver and front passenger front seat-mounted side and three-row side curtain airbags ³⁵	S	S	S	S	S	S	S	S	S	S
Driver's knee airbag ³⁵	S	S	S	S	S	S	S	S	S	S
Driver and front passenger active headrests ³⁶	S	S	S	S	S	S	S	S	S	S
Tire Pressure Monitor System (TPMS) ³⁷	S	S	S	S	S	S	S	S	S	S
3-point seatbelts in all seating positions with adjustable seatbelt anchors on front- and second-row seats, driver's belt Emergency Locking Retractor (ELR) and Automatic/Emergency Locking Retractors (ALR/ELR) on all other seats	S	S	S	S	S	S	S	S	S	S
Front seatbelt pretensioners with force limiters	S	S	S	S	S	S	S	S	S	S
Driver and front passenger seatbelt warning system	S	S	S	S	S	S	S	S	S	S
Energy-absorbing collapsible steering column	S	S	S	S	S	S	S	S	S	S
Reinforced steel unitized body with high-tensile-strength steel	S	S	S	S	S	S	S	S	S	S
Front ventilated disc/solid rear disc brakes	S	S	S	S	S	S	S	S	S	S
Front and rear crumple zones and side-impact beams for front and sliding side doors	S	S	S	S	S	S	S	S	S	S
LATCH (Lower Anchors and Tethers for Children) for outboard second-row seating positions and third-row middle seat	S	S	S	S	S	S	S	S	S	S
Remote keyless entry with lock, two-stage unlocking, panic function and power sliding side/rear door controls	-	-	-	P	S	-	-	P	S	-
Smart Key System ²⁹ on all doors with Push Button Start and remote illuminated entry	-	-	-	-	P	S	-	-	P	S
Retractable assist grips at all outboard seating positions	S	S	S	S	S	S	S	S	S	S
Removable fabric-trimmed second-row captain's chairs with tip-up and long-slide feature	S	-	-	-	-	-	-	-	-	-
Removable easy-clean fabric-trimmed second-row captain's chairs with tip-up and long-slide feature	-	O ^{14,17}	-	-	-	-	O ^{14,17}	-	-	-
Removable easy-clean fabric-trimmed second-row captain's chairs with 40/20/40 stowable center passenger seat (8-passenger) and tip-up and long-slide feature	-	S	-	-	-	-	S	-	-	-
Removable leatherette-trimmed second-row captain's chairs with sport fabric inserts, 40/20/40 stowable center passenger seat (8-passenger) and tip-up and long-slide feature	-	-	-	S	-	-	-	S	-	-
Removable textured leather-trimmed second-row captain's chairs with 40/20/40 stowable center passenger seat (8-passenger) and tip-up and long-slide feature	-	-	-	-	S	-	-	-	S	-
Removable textured leather-trimmed second-row lounge seating ³⁰ with long-slide feature	-	-	-	-	O ¹⁷	-	-	-	O ¹⁷	-
Removable two-tone leather-trimmed second-row lounge seating ³⁰ with long-slide feature	-	-	-	-	S	-	-	-	-	S
Two 120V AC outlets	-	-	-	-	P	P	-	-	P	P
Manual second- and third-row sunshades	-	P ¹⁵	P	S	S	-	P ¹⁵	P	S	S
Three 12V outlets	S	S	S	S	S	S	S	S	S	S
Fabric-trimmed 60/40 Split & Stow 3rd Row™ seat with one-motion stow	S	S	S ³¹	-	-	S	S	S ³¹	-	-
Leather-trimmed 60/40 Split & Stow 3rd Row™ seat with one-motion stow	-	-	-	S	O ¹⁷	-	-	-	S	O ¹⁷
Leather-trimmed power 60/40 Split & Stow 3rd Row™ seat	-	-	-	-	S ³²	-	-	-	-	S ³²
Cargo area storage compartment	S	O ^{14,17}	-	O ¹⁷	S	-	O ^{14,17}	-	O ¹⁷	S
Cargo area storage compartment for second-row center seat	-	S	S	S	-	-	S	S	S	-
Side panel storage compartment for emergency tools	S	S	S	S	S	S	S	S	S	S
Four grocery hooks	S	S	S	S	S	S	S	S	S	S
Child-protector sliding door locks	S	S	S	S	S	S	S	S	S	S
Jam protection function with auto-reverse on power sliding side doors	-	P ¹⁵	S	-	-	-	P ¹⁵	S	-	-
Jam protection function with auto-reverse on power sliding side doors and rear door	-	-	P	S	S	-	-	P	S	S
Engine immobilizer ³⁸	-	S	S	-	-	-	S	S	-	-
Anti-theft system with engine immobilizer ³⁸	-	O ¹⁴	-	S	S	-	O ¹⁴	-	S	S
Windshield wiper de-icer grid	S	S	S	S	S	S	S	S	S	S
Daytime Running Lights (DRL) with manual on/off feature	S	S	S	S	S	S	S	S	S	S
Battery-saver feature	S	S	S	S	S	S	S	S	S	S
Safety Connect™ ¹⁸	-	-	-	P	S	-	-	-	P	S
Pre-Collision System (PCS) ³⁹	-	-	-	-	P ³²	-	-	-	-	P ³²
3-point Pre-Collision System (PCS) ³⁹ seatbelts for driver and front passenger	-	-	-	-	P ³²	-	-	-	-	P ³²
Dynamic Radar Cruise Control (DRCC) ⁴⁰	-	-	-	-	P ³²	-	-	-	-	P ³²
Vehicle Dynamics Integrated Management System (VDIM) ⁴¹	-	-	-	-	P ³²	-	-	-	-	P ³²
Hill Start Assist Control (HAC) ⁴²	-	-	-	-	P ³²	-	-	-	-	P ³²
Rear parking sonar	-	-	-	P	-	-	-	-	P	-
Front and rear parking sonar	-	-	-	-	S	-	-	-	-	S

S = Standard O = Optional - = Not Available P = Feature is available as part of an option package.

See numbered footnotes in Disclaimers section.

SPECIFICATIONS

MECHANICAL/PERFORMANCE	SIENNA	LE	SE	XLE	LIMITED
Engine					
2.7L DOHC 16-valve dual VVT-i 4-cylinder; 187 hp @ 5800 rpm, 186 lb.-ft. @ 4100 rpm	Standard	Standard	NA	NA	NA
3.5L DOHC 24-valve dual VVT-i V6; 266 hp @ 6200 rpm, 245 lb.-ft. @ 4700 rpm	Available	Available	Standard	Standard	Standard
Emissions rating	ULEV-II				
Ignition	Electronic, with Toyota Direct Ignition (TDI)				
Transmission	6-speed Electronically Controlled automatic overdrive Transmission with intelligence (ECT-i)				
Drivetrain					
Front engine, front-wheel drive	Standard	Standard	Standard	Standard	Standard
Active Torque Control All-Wheel Drive (AWD)	NA	Available ¹⁴	NA	Available	Available
Body construction	Unitized body with anti-vibration sub-frame				
Suspension	MacPherson strut front suspension with gas-filled shock absorbers and twist-beam rear suspension with coil springs (sport-tuned coil springs on SE model) and gas-filled shock absorbers, and front and rear stabilizer bars				
Steering					
Electric Power Steering (EPS)	Standard	Standard	NA	Standard	Standard
Sport-calibrated Electric Power Steering (EPS)	NA	NA	Standard	NA	NA
Turning circle diameter, curb to curb (ft.)	36.9	36.9	36.9	36.9	36.9
Brakes	Power-assisted ventilated 4-wheel disc brakes with Anti-lock Brake System (ABS), Electronic Brake-force Distribution (EBD) and Brake Assist ³⁴				
EXTERIOR DIMENSIONS (in.)					
Overall length	200.2	200.2	200.5	200.2	200.2
Overall height, unloaded with/without roof rails (4-cylinder)	NA/69.5	71.3/69.5	NA	NA	NA
Overall height, unloaded with/without roof rails/AWD (V6)	NA/68.9/NA	70.7/NA/71.3	70.5/68.7/NA	70.7/NA/71.3	70.7/NA/71.3
Overall width	78.1	78.1	78.1	78.1	78.1
Wheelbase	119.3	119.3	119.3	119.3	119.3
Tread width (front/rear) with available tires	67.7/67.7	67.7/67.7	67.7/67.7	67.7/67.7	67.7/67.7
Ground clearance (4-cylinder/V6/AWD)	6.7/6.5/NA	6.7/6.5/6.6	NA/6.2/NA	NA/6.5/6.6	NA/6.5/6.6
Coefficient of drag (Cd)	0.306	0.306	0.306	0.306	0.306
INTERIOR DIMENSIONS front/middle/rear (in.)					
Head room	41.0/39.7/38.3	41.0/39.7/38.3	41.0/39.7/38.3	NA	NA
with moonroof	NA	NA	39.1/39.7/38.3	39.1/39.7/38.3	NA
with dual moonroof	NA	NA	NA	NA	39.1/38.0/35.9
Shoulder room	65.0/64.6/61.1	65.0/64.6/61.1	65.0/64.6/61.1	65.0/64.6/61.1	65.0/64.6/61.1
Hip room	58.6/66.1/50.3	58.6/66.1/50.3	58.6/66.1/50.3	58.6/66.1/50.3	58.6/66.1/50.3
Leg room	40.5/37.6/36.3	40.5/37.6/36.3	40.5/37.6/36.3	40.5/37.6/36.3	40.5/37.6/36.3
Seating capacity	7	7 (8)	8	7 (8)	7
WEIGHTS AND CAPACITIES					
Curb weight (lb.) (4-cylinder/FWD/AWD)	4275/4380/NA	4310/4365/4585	NA/4460/NA	NA/4490/4735	NA/4490/4735
Cargo volume ⁴³ (cu. ft.) behind front/middle/rear seats	150.0/87.1/39.1	150.0/87.1/39.1	150.0/87.1/39.1	150.0/87.1/39.1	150.0/87.1/39.1
Towing capacity ¹⁹ (lb.) maximum with Towing Prep Option (V6 models only)	3500	3500	3500	3500	3500
Fuel tank (gal.)	20	20	20	20	20
TIRES					
Standard					
FWD	P235/60R17	P235/60R17	P235/50R19	P235/60R17	P235/55R18
AWD (run-flat tires)	NA	P235/55RF18	NA	P235/55RF18	P235/55RF18
Type					
Spare (FWD only)	Temporary	Temporary	Temporary	Temporary	Temporary
MILEAGE ESTIMATES (mpg city/highway)⁴⁴					
FWD 4-cylinder ⁴⁵	19/26	19/26	NA	NA	NA
FWD V6	18/24	18/24	18/24	18/24	18/24
AWD V6	NA	16/22	NA	16/22	16/22

See numbered footnotes in Disclaimers section.

PACKAGES AND OPTIONS

SIENNA

Towing Prep Option¹⁹ – 3500-lb. towing capacity¹⁴

LE

LE Convenience Package¹⁵ — includes fixed center console and roof rails

LE Preferred Package¹⁵ — includes dual power sliding side doors, 8-way power driver's seat with power lumbar support and seatback pocket, electrochromic rearview mirror with HomeLink^{®26} universal transceiver, Multi-Information Display with backup camera²⁰ rear window sunshades, AM/FM/MP3 CD player, six speakers, XM[®] Radio⁴ (includes 90-day trial subscription), auxiliary audio jack, USB²³ port with iPod^{®2} connectivity, hands-free phone capability and music streaming via Bluetooth^{®24} wireless technology, Vacuum Fluorescent Display, and steering wheel audio and voice-command controls

SE

SE Preferred Package — includes power rear door, tri-zone CFC-free automatic climate control, roof rails, fixed center console, rear window sunshades, AM/FM/MP3 CD player, six speakers, XM[®] Radio⁴ (includes 90-day trial subscription), auxiliary audio jack, USB²³ port with iPod^{®2} connectivity, hands-free phone capability and music streaming via Bluetooth^{®24} wireless technology, Vacuum Fluorescent Display, and steering wheel audio and voice-command controls

XLE

Entertainment Package — includes Dual-View Entertainment Center²⁸ with two wireless headphones³

XLE Navigation Package — includes voice-activated touch-screen DVD navigation system²⁵ with Panorama Camera²⁰ including integrated backup camera with two views (regular and wide-angle) and on-screen backup guides, JBL[®] AM/FM/MP3 4-disc CD changer, ten speakers, XM[®] Radio⁴ with XM NavTraffic^{®25} (includes 90-day trial subscriptions), auxiliary audio jack, USB²³ port with iPod^{®2} connectivity, hands-free phone capability and music streaming via Bluetooth^{®24} wireless technology, Smart Key System²⁹ on all doors with Push Button Start and remote illuminated entry, chrome outside door handles and rear parking sonar

LIMITED

Entertainment Package — includes Dual-View Entertainment Center²⁸ with two wireless headphones³

Limited Navigation Package — includes voice-activated touch-screen DVD navigation system²⁵ with Panorama Camera²⁰ including integrated backup camera with two views (regular and wide-angle) and on-screen backup guides, JBL[®] AM/FM/MP3 4-disc CD changer, ten speakers, XM[®] Radio⁴ with XM NavTraffic^{®25} (includes 90-day trial subscriptions), auxiliary audio jack, USB²³ port with iPod^{®2} connectivity, hands-free phone capability and music streaming via Bluetooth^{®24} wireless technology

Limited Premium Package — includes Dual-View Entertainment Center²⁸ with two wireless headphones³ voice-activated touch-screen DVD navigation system²⁵ with Panorama Camera²⁰ including integrated backup camera with two views (regular and wide-angle) and on-screen backup guides, JBL[®] AM/FM/MP3 4-disc CD changer, ten speakers, XM[®] Radio⁴ with XM NavTraffic^{®25} (includes 90-day trial subscriptions), auxiliary audio jack, USB²³ port with iPod^{®2} connectivity, hands-free phone capability and music streaming via Bluetooth^{®24} wireless technology

WARRANTIES

Every Toyota Car, Truck and SUV is built to exceptional standards. And that's not idle boasting. We back it up with these Limited Warranty Coverages:

Basic: 36 months/36,000 miles (all components other than normal wear and maintenance items).

Powertrain: 60 months/60,000 miles (engine, transmission/transaxle, front-wheel drive, rear-wheel drive, seatbelts and airbags).

Rust-Through: 60 months/unlimited miles (corrosion perforation of sheet metal).

Emissions: Coverages vary under Federal and California regulations. Refer to applicable *Warranty and Maintenance Guide* for details.

Accessories: For Genuine Toyota accessories purchased at the time of the new vehicle purchase, the Toyota Accessory Warranty coverage is in effect for 36 months/36,000 miles from the vehicle's in-service date, which is the same coverage as the Toyota New Vehicle Limited Warranty.

Towing Prep Option¹⁹ – 3500-lb. towing capacity¹⁴

Anti-theft system with engine immobilizer^{14,38}

Power tilt/slide moonroof with sunshade

Towing Prep Option¹⁹ – 3500-lb. towing capacity

XLE Premium Package — includes Dual-View Entertainment Center²⁸ with two wireless headphones³ voice-activated touch-screen DVD navigation system²⁵ with Panorama Camera²⁰ including integrated backup camera with two views (regular and wide-angle) and on-screen backup guides, JBL[®] AM/FM/MP3 4-disc CD changer, ten speakers, XM[®] Radio⁴ with XM NavTraffic^{®25} (includes 90-day trial subscriptions), auxiliary audio jack, USB²³ port with iPod^{®2} connectivity, hands-free phone capability and music streaming via Bluetooth^{®24} wireless technology, Smart Key System²⁹ on all doors with Push Button Start and remote illuminated entry, chrome-accented outside door handles, rear parking sonar and Safety Connect^{TM18}

Limited Convenience Package — includes High Intensity Discharge (HID) headlamps with auto on/off feature and Automatic High Beam¹³ and rain-sensing washer-linked variable intermittent windshield wipers

Limited Advanced Technology Package^{32,46} — includes Dynamic Radar Cruise Control (DRCC)⁴⁰ Pre-Collision System (PCS)³⁹ Vehicle Dynamics Integrated Management (VDIM)⁴¹ and Hill Start Assist Control (HAC)⁴²

For Genuine Toyota accessories purchased after the new vehicle purchase the coverage is 12 months, regardless of mileage, from the date the accessory was installed on the vehicle, or the remainder of any applicable new vehicle warranty, whichever provides greater coverage, with the exception of car covers. Car covers are warranted for 12 months from the date of purchase and do not assume any coverage under the Toyota New Vehicle Limited Warranty.

You may be eligible for transportation assistance if it's necessary that your vehicle be kept overnight for repairs covered under warranty. Please see your authorized Toyota dealership for further details.

For complete details about Toyota's warranties, please visit www.toyota.com, refer to the applicable *Warranty and Maintenance Guide* or see your Toyota dealer.

DISCLAIMERS

1. Interface kit for iPod® not available if vehicle is equipped with XM® Radio services. 2. iPod® is a registered trademark of Apple, Inc. All rights reserved. 3. Headphones are for passenger use only. Do not use while operating vehicle. 4. Satellite radio requires XM-compatible receiver and monthly service fee. See your Toyota dealer for further details. Reception of the satellite signal may vary depending on location. All fees and programming subject to change. Subscriptions subject to the terms and conditions available at www.xmradio.com. Available only in the 48 contiguous United States. 5. SE model only. 6. Not available on SE model. 7. Extra-cost color. 8. Limited models only. 9. Not available on Limited models. 10. Sienna SE model expected availability spring 2010. 11. Toyota strives to build vehicles to match customer interest and thus they typically are built with popular options and option packages. Not all options/packages are available separately and some may not be available in all regions of the country. See toyota.com for information about options/packages commonly available in your area. If you would prefer a vehicle with no or different options, contact your dealer to check for current availability or the possibility of placing a special order. 12. Sienna SE and 4-cylinder models expected availability spring 2010. 13. The automatic high beam system can help improve vision at night. However, conditions such as a dirty windshield, rapidly changing light conditions or hilly terrain will limit effectiveness so the driver may need to manually change the high beams from on to off. See *Owner's Manual* for details. 14. V6 models only. 15. Available on 4-cylinder, standard on V6 models. 16. Models equipped with All-Wheel Drive replace standard wheels and tires with 18-in. 10-spoke machine-finished alloy wheels with P235/55RF18 run-flat tires and do not include a spare tire. 17. All-Wheel Drive models only. 18. Available on select 2011 Toyota models. Contact with the Safety Connect™ response center is dependent upon the telematics device being in operative condition, cellular connection availability, navigation map data and GPS satellite signal reception, which can limit the ability to reach the response center or receive emergency service support. Enrollment and Telematics Subscription Service Agreement required. One-year trial subscription available only with new vehicle purchase of Safety Connect™-equipped vehicles. Additional subscription terms available; charges vary by subscription term selected. 19. Before towing, confirm your vehicle and trailer are compatible, hooked up and loaded properly and that you have any necessary additional equipment. Do not exceed any Weight Ratings and follow all instructions in your *Owner's Manual*. The maximum you can tow depends on the total weight of any cargo, occupants and available equipment. 20. The backup camera does not provide a comprehensive view of the rear area of the vehicle. You should also look around outside your vehicle and use your mirrors to confirm rearward clearance. Cold weather will limit effectiveness and view may become cloudy. 21. The backup camera uses the navigation system display on vehicles so equipped. 22. Requires touch-screen DVD navigation system. 23. May not be compatible with all MP3/WMA players and like models. 24. The Bluetooth® technology phones listed on toyota.com have been tested for compatibility with Toyota vehicles. Performance will vary based on phone software version, coverage and your wireless carrier. Phones are warranted by their manufacturer, not Toyota. 25. The navigation system is designed to assist in locating an address or point of interest. XM NavTraffic® requires a monthly service fee and hardware and is designed to provide real-time traffic or alternative routes of travel. Discrepancies may be encountered between the system and your actual location. Road system changes may affect the accuracy of the information provided. Rely on your common sense to decide whether to follow a specified route. Detailed coverage not available in every city or roadway. Periodic navigation updates available at an additional cost. See your *Navigation System Owner's Manual* for further details. 26. HomeLink® is a registered trademark of Johnson Controls, Inc. 27. Requires power tilt/slide moonroof. 28. A single-disc DVD player is standard on vehicles equipped with the Dual-View Entertainment Center. A separate DVD player or compatible game system utilizing the center console's video/audio inputs is required in order to use the split-screen function. 29. The Smart Key System may interfere with some pacemakers or cardiac defibrillators. If you have one of these medical devices, please talk to your doctor to see if you should deactivate this system. 30. Do not use the ottoman feature when the vehicle is in motion. The ottoman feature should only be used when the vehicle is stationary. If the ottoman feature is in use during an accident the lap belt may slide past the hips. This could also result in restraint forces being applied directly to the abdomen or your neck may contact the shoulder belt, increasing the risk of death or serious injury. 31. Leatherette-trimmed third-row seat on SE model. 32. Not available on AWD model. 33. Vehicle Stability Control (VSC) is an electronic system designed to help the driver maintain vehicle control under adverse conditions. It is not a substitute for safe driving practices. Factors including speed, road conditions and driver steering input can all affect whether VSC will be effective in preventing a loss of control. Please see your *Owner's Manual* for further details. 34. Brake Assist is designed to help the driver take full advantage of the benefits of ABS. It is not a substitute for safe driving practices. Braking effectiveness also depends on proper brake-system maintenance and tire and road conditions. 35. All the airbag (AB) systems are Supplemental Restraint Systems. All ABs (if installed) are designed to inflate only under certain conditions and in certain types of severe collisions: frontal and knee ABs typically inflate in frontal collisions; side and side curtain ABs in side collisions; Roll-Sensing Curtain ABs at a severe tilt degree, roll or lateral G-force. In all other accidents, the ABs will not inflate. To decrease the risk of injury from an inflating AB, always wear seatbelts, sit upright in the middle of the seat as far back as possible and do not lean against the door. Do not put objects in front of an AB or around the seatback. Do not use a rearward-facing child seat in any front passenger seat. The force of an inflating AB may cause serious injury or death. See your *Owner's Manual* for further information/warnings. 36. Active headrests can help reduce the extent of whiplash in certain types of rear-end collisions. 37. The Toyota Tire Pressure Monitor alerts the driver when tire pressure is critically low. For optimal tire wear and performance, tire pressure should be checked regularly with a gauge; do not rely solely on the monitor system. See your *Owner's Manual* for details. 38. The engine immobilizer is a state-of-the-art anti-theft system. When you insert your key into the ignition switch or bring a Smart Key fob into the vehicle, the key transmits an electronic code to the vehicle. The engine will only start if the code in the transponder chip inside the key or Smart Key fob matches the code in the vehicle's immobilizer. Because the transponder chip is embedded in the key or Smart Key fob, it can be costly to replace. If you lose a key or Smart Key fob, your Toyota dealer can help. Alternatively, you can find a qualified independent locksmith to perform high-security key services by consulting your local Yellow Pages or by contacting www.aloa.org 39. The Pre-Collision System is designed to help reduce the crash speed and damage in certain frontal collisions only. It is not a collision-avoidance system and is not a substitute for safe and attentive driving. System effectiveness depends on many factors such as speed, driver input and road conditions. See your *Owner's Manual* for further information. 40. Dynamic Radar Cruise Control is designed to assist the driver and is not a substitute for safe and attentive driving practices. Please see your *Owner's Manual* for important instructions and cautions. 41. Vehicle Dynamics Integrated Management (VDIM) is an electronic system designed to help the driver maintain vehicle control under adverse conditions. It is not a substitute for safe driving practices. Factors including speed, road conditions and driver steering input can all affect whether VDIM will be effective in preventing a loss of control. Please see your *Owner's Manual* for further details. 42. Hill Start Assist Control (HAC) is designed to help minimize backward rolling on steep ascents. It is not a substitute for safe driving judgment and practices. Factors including grade, surface conditions and driver input can all affect whether HAC will be effective in preventing a loss of control. Please see your *Owner's Manual* for further details. 43. Cargo and load capacity limited by weight and distribution. 44. 2011 EPA-estimated mileage. Actual mileage will vary. 45. 2011 preliminary city/highway mpg estimates determined by Toyota. EPA estimates not available at time of posting. Actual mileage will vary. 46. Requires Convenience Package.

Some vehicles are shown with available equipment. Seatbelts should be worn at all times. Please do not allow passengers to ride in the cargo area. For details on vehicle specifications, standard features and available equipment in your area, contact your Toyota dealer. A vehicle with particular equipment may not be available at the

dealership. Ask your Toyota dealer to help locate a specifically equipped vehicle.

All information presented herein is based on data available at the time of printing, is subject to change without notice and pertains specifically to mainland U.S.A. vehicles only.



For Toyota Mobility program details, go to www.toyota.com/mobility or call the Toyota Customer Assistance Center at 1-800-331-4331

