

IMPORTED
Metropolitan "1500"



"Luxury in Miniature"



METROPOLITAN "136" HARDTOP COUPE

The Metropolitan "1500"

MEET THE WORLD'S SMARTEST SMALLER CAR! The Metropolitan "1500" provides smart, sound, sensible transportation for two people plus, in either of two distinctive body styles—Hardtop Coupe and dashing Convertible. You'll like the sparkling, yet thrifty power . . . the sensational handling ease in traffic . . . the responsiveness on the open road. Here, truly, is luxury in miniature . . . "A watch-charm Rolls-Royce" as Devon Francis described the Metropolitan in Popular Science Monthly.



METROPOLITAN 1500 CONVERTIBLE



Two-way trunk loading is yours with Metropolitan. Luggage, golf clubs, sports gear, packages or salesman's samples can be loaded in the spacious trunk compartment either by lifting the trunk lid on the outside of the car or from inside the passenger compartment in case of inclement weather. Another example of Metropolitan versatility and convenience.

World-famous Weather Eye Heating, Ventilating and Defrozing System filters, heats and circulates warm fresh air to keep all passengers warm as-tout on the coldest days. The fresh air intake is located at cowl level above the hood, above the level of exhaust fumes from cars ahead. Weather Eye has long been recognized in the world's most efficient car heating and ventilating system. Constant-speed electric windshield wipers are standard.

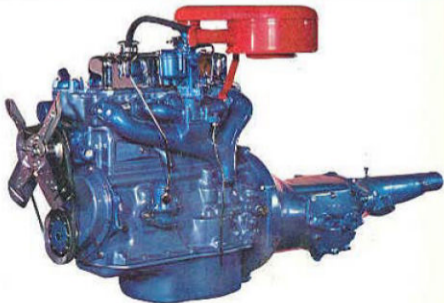
THRIFTY 55 H.P. ENGINE COMBINES TOP ECONOMY WITH SPARKLING PERFORMANCE

Here is the efficient, economical powerplant that provides top operating economy on regular grade gasoline — the world-famous B.M.C. Austin 4-cylinder engine. Developing 55 horsepower with an 8.3:1 compression ratio, the overhead valve engine combines responsive performance with economy under all driving conditions. Full-flow oil filter and oil-bath air cleaner are standard.

CONSTANT SPEED FUEL ECONOMY, MPG

20 MPH 32.2	40 MPH 35.3
30 MPH 39.5	50 MPH 31.3

The data, although accurate, does not imply a guarantee in view of our and your condition variables.





The richly tailored appointments bespeak the custom quality of the Metropolitan "1500". Full-depth coil spring seat with foam rubber cushion is upholstered in durable white vinyl and gray-black "miracle fabrics." The full-width front seat provides 49 $\frac{1}{2}$ " of hiproom, 41 $\frac{1}{2}$ " of legroom and 35 $\frac{1}{2}$ " of headroom - generous dimensions for two people plus. The side vent windows provide draft-free ventilation, adding to sustaining pleasure.



Dedicated To More Intelligent Motoring

Every owner of a Metropolitan "1500" is entitled to membership in the METROPOLITAN CLUB dedicated to the concept of more intelligent motoring. In joining the Club, the member expresses belief in the official Club platform: (1) The conservation of vital natural resources, such as iron, oil and rubber. (2) The reduction of personal motoring costs—both capital and operating—thus making additional funds available to car owners to be used for other purposes—including savings. (3) The encouragement of the use of the proper car for the need at hand. (4) The dissemination of the basic philosophy that waste in any form is unwise and unintelligent. (5) The belief that some American cars today almost exceed

the bounds of good taste in wasteful pretentiousness. (6) The reduction in the present inexcusable number of highway fatalities. (7) The conviction that high speed is one of the greatest enemies of motoring safety and economy.

Every member receives Certificate of Membership, Membership Card, Handsome Embossed Stainless Steel Baked Enamel Insignia for Car, Directory of Metropolitan Dealers in 50 States. All members receive the official Club publication "The Met Letter" which is published quarterly, and they are entitled to all gestures of *esprit de corps* from fellow members and to all courtesies from American Motors Metropolitan dealers located in all 50 states.

SPECIFICATIONS

BODY—Single Unit Car Construction, Bondrined and dip-primed for rust and corrosion protection, Baked enamel finish, Wheelbase 85", Overall Length 149½", Overall Width 61½", Loaded Height 50½", Front Tread 45½", Rear Tread 44½".

MECHANICAL—British Motor Corp., Austin engine, overhead valve, 4 cylinders, Displacement 90.89 cu. in. (1499.6 cu. cm.), Bore 2½", Stroke 3½", 55 BHP @ 5600 RPM, Torque 82 lb. ft. @ 2400 RPM, 8.3:1 Compression Ratio, Zenith down-draft carburetor, Manual controlled choke, Oil-bath air cleaner, Full-flow oil filter,

Four-ring aluminum pistons, Deep Coil front suspension, Semi-elliptical rear leaf springs, Hotchkiss type power drive, Girling 8" diameter brakes with bonded linings, total area, 563 sq. in. Three-speed Synchromesh transmission, Hydraulically operated clutch linkage, Rear axle ratio 4.22:1, Tubeless tires, 5.60 x 13—4 ply, 10½" pollen fuel tank, Turning diameter 35 feet, Shipping weight, 1850 lb. (Convertible), 1890 lb. (Hardtop), Crankcase capacity (with filter) 4½ qts., Cooling system capacity (with heater) 2 qts., Electrical system, 12 volts.

EQUIPMENT—Standard: Two-tone enamel, Protective undercoating, Turn signals, Electric dual wind-

shield wipers, Dual horns, Glove box door, Map light, Cigarette lighter, Dual sun visors, Vent windows, Inside and outside trunk lids, Front and rear bumper guards, Coil spring front seat with airfoam, Fabric with vinyl interiors, Continental tire and cover, Oil filter, Oil bath air cleaner, Extra Cast: Heating, Ventilating and Defrosting System, Manual radio, Whitewall tires, Heater, Accessories: windshield washers, temperature gauge, seat belts, seat covers and other items.

American Motors Corporation, Wholen Policy in Use of Government's Approval, Register the P and M Group Specifications, Models or Prices in any form without notice and at our factory 36160.

