



American Motors

Spirit • Concord



American Motors has always been a pioneer in the design and manufacture of quality automobiles. By genuinely responding to consumer needs and wants, there has been a commitment to the lasting value and total comfort of its products. This commitment can be seen in the AMC Spirit and Concord.

Examine the stylish new Spirit. Its compact size makes it an agile performer. Yet, its wide track and long wheelbase assure a smooth stable ride. Spirit is offered in 2 body styles: sedan and liftback. The liftback's efficient design allows for exceptionally easy cargo storage. And room enough to hold what many larger cars just can't handle.

The Spirit sedan offers traditionally appealing design and comfort. Inside, the fold down rear seat provides extra cargo space. And plenty of room for driver and passengers alike in a well-appointed interior.

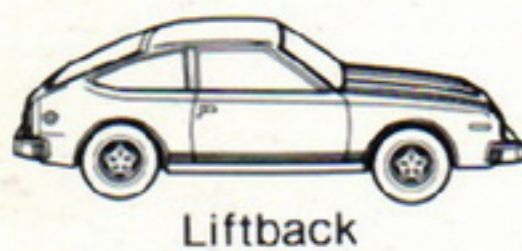
The new Concord combines precise, compact external dimensions with a luxurious and spacious interior. Its handsome looks set it apart from the competition. Yet, it deftly handles the open highway, city streets and tight parking spaces with ease. Offered in a 2-or 4-door sedan and a wagon, every

Concord is backed by years of developmental engineering and technology. Each Concord, and Spirit, too, is built with 100% galvanized steel on the inside of all exterior body panels. And each is protected with rust and corrosion inhibitors. The AMC Spirit and Concord. These cars are built to last.



New 5-speed manual overdrive transmission and gauge package.

Spirit

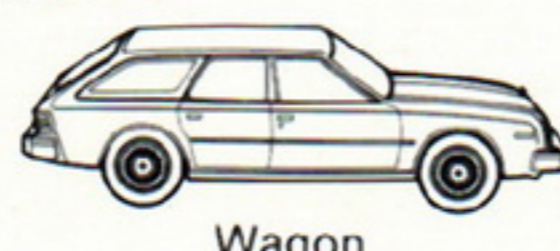


Liftback

Concord



Sedan



Wagon



2-Door Sedan



4-Door Sedan

STANDARD FEATURES

Spirit and Concord DL models offer the following standard equipment:

Functional

- 2.5 litre, 4-cylinder engine
- 4-speed manual transmission
- Manual front disc brakes with low drag
- P185/75R 14 radial WSW tires (Spirit)
- P195/75R 14 radial WSW tires (Concord)
- 79.5 litre fuel tank (Spirit)
- 83.3 litre fuel tank (Concord)
- Front stabilizer bar
- High level ventilation
- Heater/defroster system
- High-pressure compact spare tire
- Extra quiet insulation
- Dual horns
- 2-speed electric wipers and washers
- AM radio (Spirit)
- Heavy-duty battery

Exterior

- Full styled wheel covers
- Dual bodyside pinstripes

- Bright exterior moldings including rocker, drip, wheelip, windshield surround
- Bodyside scuff moldings (Concord)
- Left remote control chrome mirror
- Quad rectangular headlamps
- Vinyl roof with opera windows (Concord sedans)
- Woodgrain side panels (Concord wagon)
- Deluxe exterior moldings
- Bumper guards—front and rear
- DL exterior identification
- Woodgrain instrument panel overlay
- Quartz digital clock
- Inside hood release
- Glove box lock
- Lighted ashtray—front
- 25.4 cm day/night mirror
- Rear seat ashtrays (Concord)
- Cargo skid strips (Concord wagon)
- Trunk carpeting (Concord sedans)
- Cigarette lighter
- Dome light
- Parking brake warning light
- Key warning buzzer (Spirit)
- Lockable cargo compartment (Concord wagon)
- Fold down rear seat (Spirit liftback and sedan; Concord wagon)

Interior

- Reclining bucket seats in deluxe grain vinyl (Spirit)
- Individual reclining seats in deluxe grain vinyl (Concord)
- Split folding rear seat (Spirit)
- Premium door trim panels with woodgrain accents
- Color-keyed carpeting in passenger area
- Cargo area carpeting (Spirit liftback and sedan; Concord wagon)
- Custom steering wheel with woodgrain accents

Concord Limited

models offer the following standard equipment in addition to or in place of Concord DL model equipment:

Convenience

- Power steering
- Power front disc brakes
- Power door locks

- Power deck lid release (sedans)
- AM/FM stereo radio
- Air conditioning
- Tilt steering wheel
- Convenience Group
- Light Group

Exterior

- Wire wheel covers
- "Limited" exterior identification
- Protection Group
- Bright door frame accent moldings
- Roof rack (wagon)
- Mirror (chrome)-outside passenger side (remote)

Interior

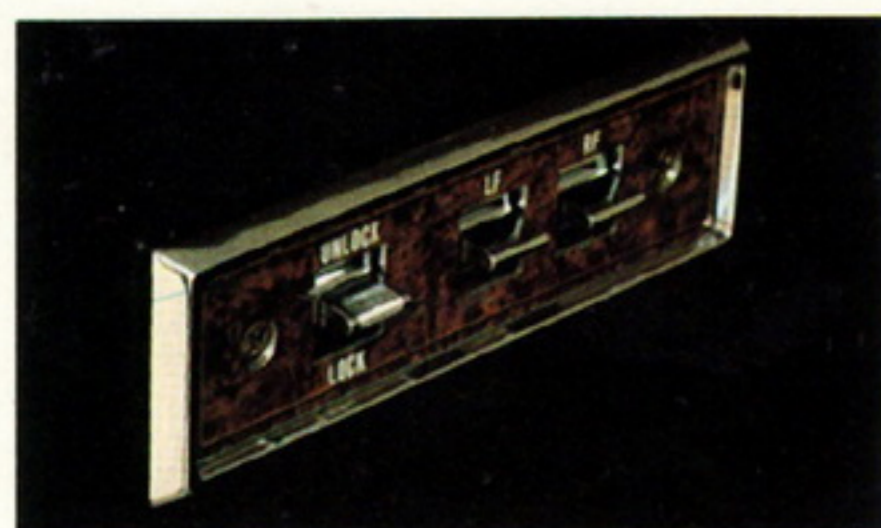
- Individual reclining seats in Chelsea leather
- Premium door panels with "Limited" identification
- Luxury woodgrain steering wheel
- Deluxe carpeting in passenger area
- Under-dash parcel shelf
- Tinted glass

OPTIONS

Some options listed are standard on DL or Limited models or are included in select packages.

Power

- Power steering
- Power front disc brakes
- Power lift side windows
- Power door locks
- 6-way power driver's seat (Concord)
- 6-way power driver's and passenger's seat (Concord)
- Power trunk lid release (Concord)
- Power liftback release (Spirit)



Audio

- AM radio (std. with Spirit)
- AM/FM stereo radio
- AM/FM cassette stereo radio
- Electronically tuned AM/FM cassette stereo radio
- AM/FM/CB stereo radio
- Premium audio system
- Power antenna



Convenience

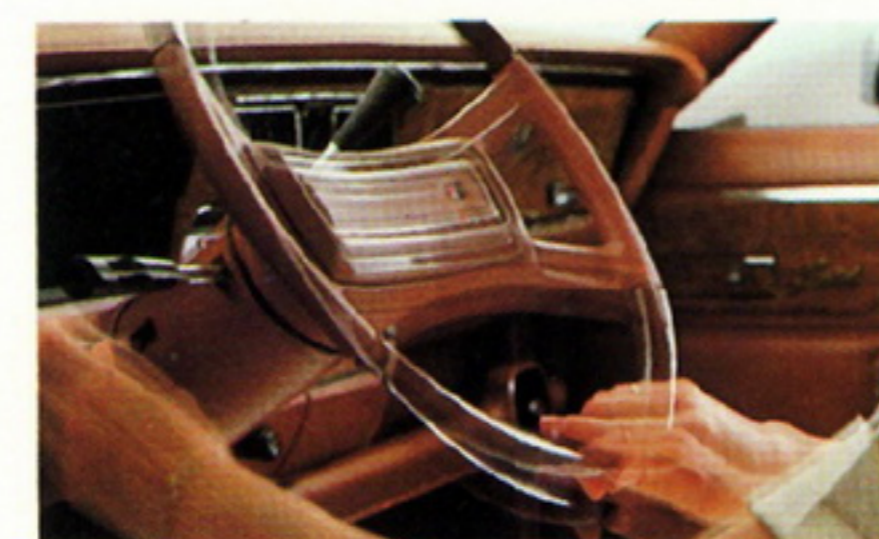
- Air conditioning system (includes heavy-duty cooling system)
- Air conditioning package (includes air conditioning system as above plus power steering and tinted glass)
- Light Group (includes dome/map light, two courtesy lights, glove box light, engine compartment light, rear door dome light switches, trunk light on sedans and liftgate, dome light switch on liftback and wagon)
- Convenience Group (includes lighted passenger visor mirror, lights-on buzzer and intermittent windshield wipers)



- Gauge Package (includes tachometer, clock, ammeter, oil and vacuum pressure gauges)
- Tinted glass
- Rear window defogger
- Rear window wiper and washer (liftback and wagon)
- Pop-up sun roof



- Cruise control (automatic transmission only)
- Tilt steering wheel
- Roof rack (Spirit Sedan and Concord Wagon)
- Tailgate air deflector (Spirit)
- Full-length console with armrest (Spirit)
- Halogen headlamps
- Parcel shelf
- Remote control right outside sport mirror (with G.T. Package)
- Remote control right outside chrome mirror
- Electric control dual outside chrome mirrors
- Metric speedometer



Appearance

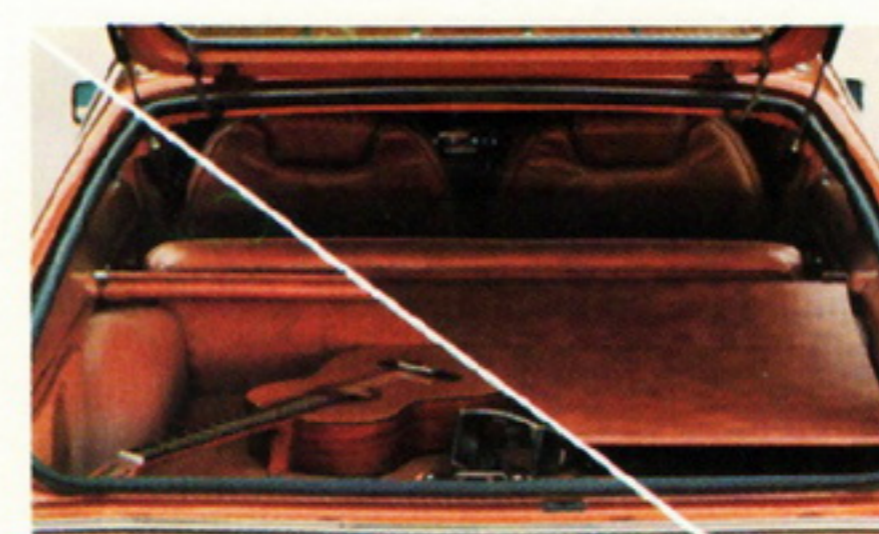
- Spirit G.T. Package includes the following equipment:
Interior—color-keyed sport steering wheel.
Exterior—spoke styled wheels; black left remote sport mirror; black bumpers with nerf strips and guards; blackout exterior accents on grille, trim moldings, venturi area and taillamps; dual black paint stripes (color-keyed with black exterior paint); G.T. medallions.
Functional—P185/75R 14 radial BSW tires.
- Two-tone paint
- Rallye stripes (Spirit)
- Rear spoiler (with Spirit G.T. package only)
- Luxury woodgrain steering wheel
- Leather wrapped sport steering wheel
- Vinyl sport steering wheel (Spirit)

Wheel Trim

- Wire wheel covers
- Spoke style wheels
- Turbocast II aluminum wheels

Protection

- Protection Group (includes bumper nerf strips and guards, door edge guards and floor mats)
- Locking gas cap
- Bodyside scuff moldings (Spirit)
- Retractable cargo area cover (Concord wagon)



Heavy Duty

- Handling Package (includes unique front and rear sway bars)
- Heavy-duty shock absorbers
- Automatic load leveling air shocks (Concord)
- G.T. rally tuned suspension (Spirit liftback; includes uniquely tuned front sway bar, rear sway bar, heavy-duty adjustable Gabriel Strider shock absorbers, tuned strut rod bushings, tuned rear spring iso-clamp pads, hi-control rear leaf springs and unique steering gear)

- Concord Light-duty Trailer Towing Package (includes bumper-mounted hitch, 5-connector wiring harness and vehicle-to-trailer wiring kit for trailers up to 900 kg.)
- Twin Grip differential
- Cold Climate Group
- 4-cylinder heavy-duty cooling system
- 6-cylinder heavy-duty cooling system

Tires

- P195/75R14 fiberglass radial BSW (Spirit)
- P195/75R14 fiberglass radial WSW
- P195/75R14 Arriva steel radial WSW
- P205/70R14 steel radial RWL

EXTERIOR COLORS

	
Olympic White	Mist Silver, Met.
	
Classic Black	Sherwood Green, Met.
	
Jamaican Beige	Topaz Gold, Met.
	
Copper Brown, Met.	Slate Blue, Met.
	
Deep Night Blue	Oriental Red
	
Deep Maroon, Met.	Sun Yellow
	
Sea Blue, Met.	Vintage Red, Met.

INTERIORS

AMC Spirit and Concord interiors are available in a choice of several materials. From durable vinyls, handsome fabrics to genuine leather.

- A. Concord DL interior in plush Castillian Sculptured fabric.
- B. Concord Limited interior in supple genuine leather.
- C. Spirit DL interior in Coventry Checked fabric.

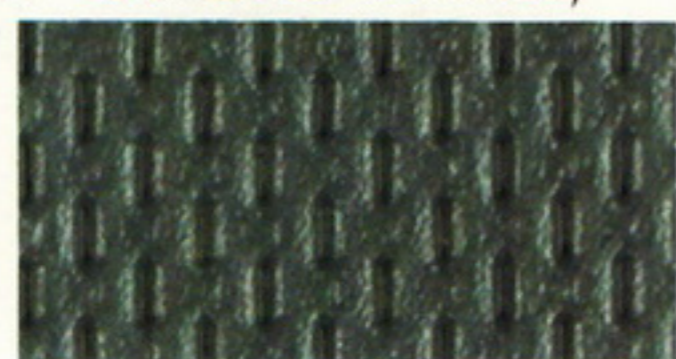


INTERIOR SEAT TRIMS

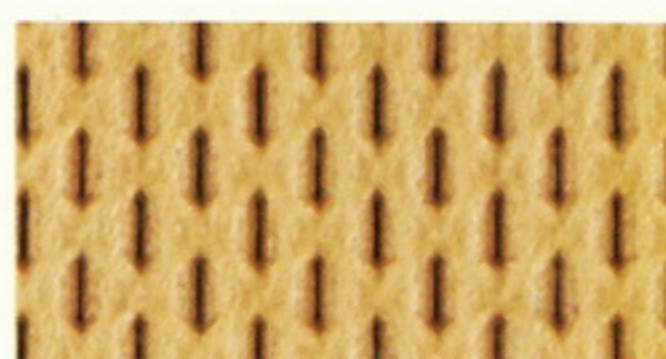
Deluxe Grain Vinyl—std. (NA—Concord Limited)



Black*



Blue



Beige



Nutmeg

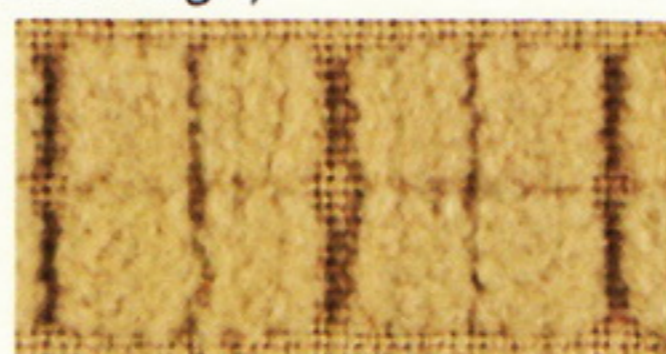
Coventry Checked Fabric—opt. (Spirit DL only—no extra charge)



Black



Blue



Beige



Nutmeg

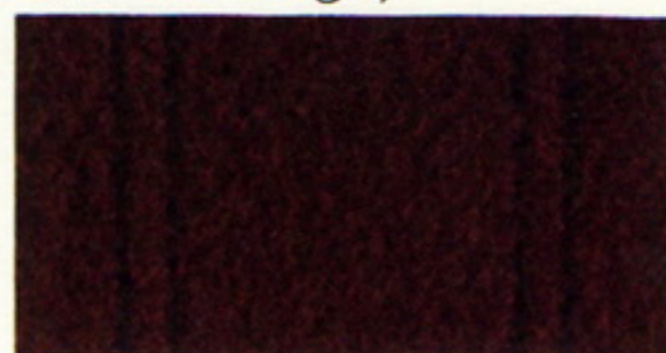
Castillian Sculptured Fabric—opt. (Concord DL only—no extra charge)



Black*



Blue



Wine



Beige



Nutmeg

Leather—std. (Concord Limited only)



Nutmeg

*Not available with Concord 2 or 4 door sedans.

CONCORD DL WAGON

The peak of luxury combined with function—in style.



ENGINE/TRANSMISSION/AXLE AVAILABILITY

Engine/ Transmission	Worldwide (Except U.S. Possessions)	U.S. Possessions Only
Spirit	Axle Ratios	Axle Ratios
2.5 Litre (151 CID) 2V 4-cyl.		
4-Speed Man.—Floor	3.08S	3.08S
5-Speed Man.—Floor	3.08S	3.08S
3-Speed Auto.—Column	—	3.08S
3-Speed Auto.—Floor	—	3.08S
4.2 Litre (258 CID) 2V 6-cyl.		
4-Speed Man.—Floor	2.73S	2.35S
5-Speed Man.—Floor	2.73S	2.35S
3-Speed Auto.—Column	2.73S (3.08)	*2.35S
3-Speed Auto.—Floor	2.73S (3.08)	*2.35S
Concord	Axle Ratios	Axle Ratios
2.5 Litre (151 CID) 2V 4-cyl.		
4-Speed Man.—Floor	3.08S	3.08S
5-Speed Man.—Floor	3.08S	3.08S
3-Speed Auto.—Column	—	3.08S
4.2 Litre (258 CID) 2V 6-cyl.		
4-Speed Man.—Floor	2.73S	2.35S
5-Speed Man.—Floor	2.73S	2.35S
3-Speed Auto.—Column	2.73S (3.08)	*2.35S (2.73)

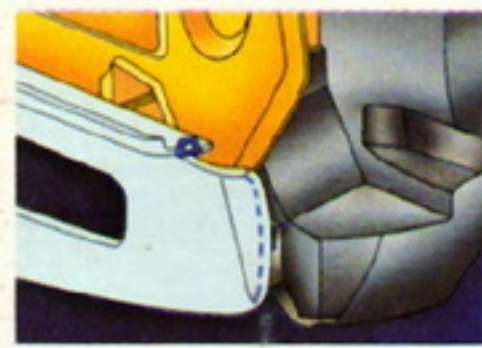
SPIRIT/CONCORD DIMENSIONS/CAPACITIES

	Spirit		Concord		
	Liftback	Sedan	4-door	2-door	Wagon
Exterior (cm)					
Wheelbase	244	244	274	274	274
Overall length	425	424	470	470	470
Overall width	183	183	180	180	180
Overall height	131	131	130	132	134
Front overhang	90	90	90	90	90
Front track	148	148	146	146	146
Rear track	145	145	145	145	145
Interior (cm)					
Front leg room	104	104	104	104	104
Front head room	97	97	97	97	97
Front shoulder room	137	137	137	137	137
Front hip room	138	138	138	138	138
Rear leg room	67	65	92	92	92
Rear head room	90	96	95	95	96
Rear shoulder room	135	135	136	135	136
Rear hip room	102	110	136	133	136
Cargo Index Volumes (m³)					
Cargo Index Volumes (m ³)	.716	.784	.345	.345	1.61
Cargo Liftover Height @					
Design Weight	73	76	69	71	68
Fuel Capacity (litres)					
4-cylinder	79.5	79.5	83.3	83.3	83.3
6-cylinder	79.5	79.5	83.3	83.3	83.3
Curb Weight—base (kg)					
Curb Weight—base (kg)	1246	1222	1329	1295	1373

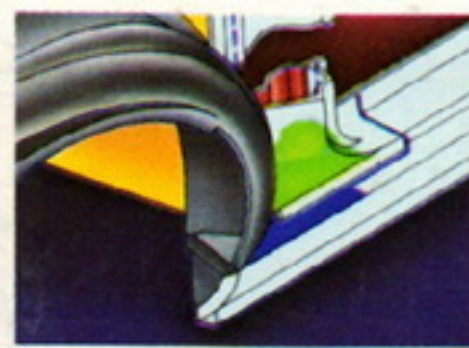
Note: .108 cubic meters of hidden cargo volume on Concord Wagon.

ONLY AMERICAN MOTORS HAS GALVANIZED STEEL IN 100% OF THE EXTERIOR BODY PANELS AS PART OF FACTORY RUST PROTECTION

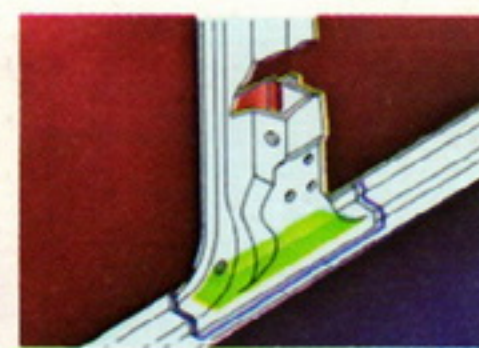
And this is how Spirits and Concorde are corrosion protected.



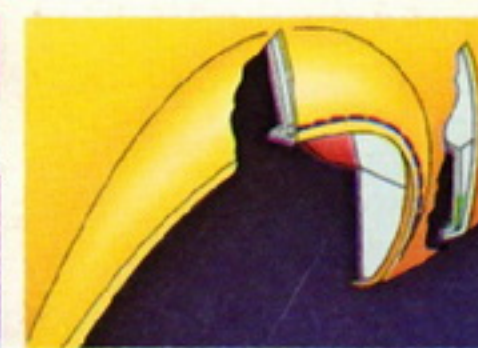
Front valence panel and fender area



Front wheel opening area

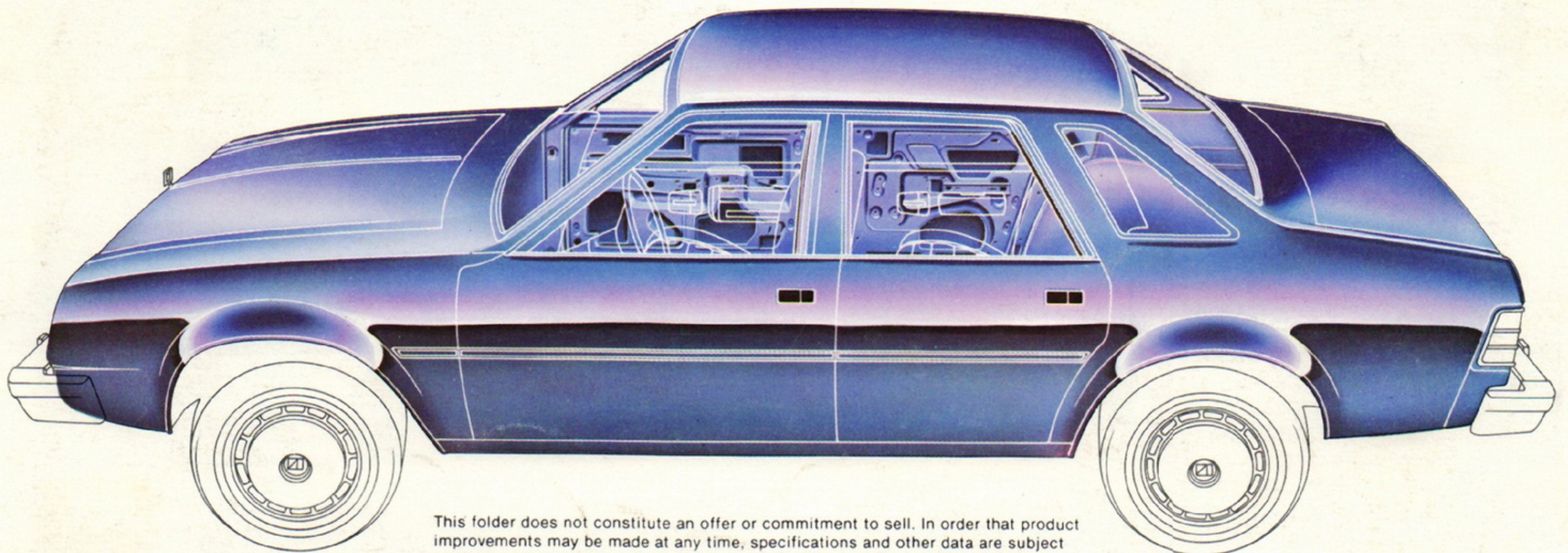


Center post and rocker panel area



Rear fender and wheel opening area

galvanized steel	primer
seam sealer	wax protection
plastic inner liner	enamel



This folder does not constitute an offer or commitment to sell. In order that product improvements may be made at any time, specifications and other data are subject to change without notice. Some of the vehicles shown and described in this brochure have optional equipment, available at extra cost. See your authorized dealer for prices and model availability for this optional equipment. In order to conform to local regulations, your vehicle may differ slightly from those shown in this brochure. Litho in USA 82-S/C - 1E

 **American Motors**