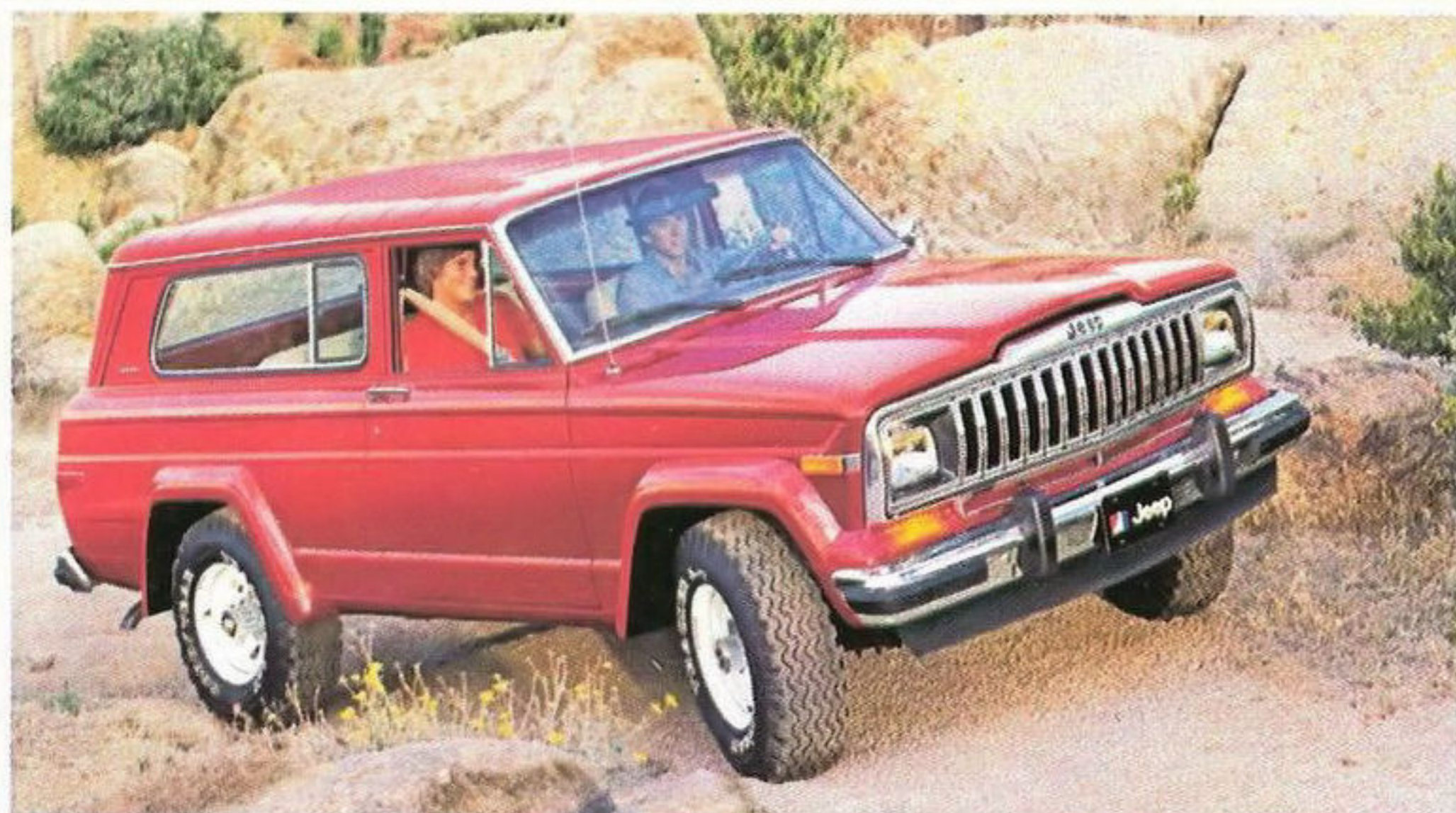


1982 Jeep Cherokee



Cherokee Chief 2-Dr



Cherokee Wide Wheel 2-Dr



Cherokee 2-Dr

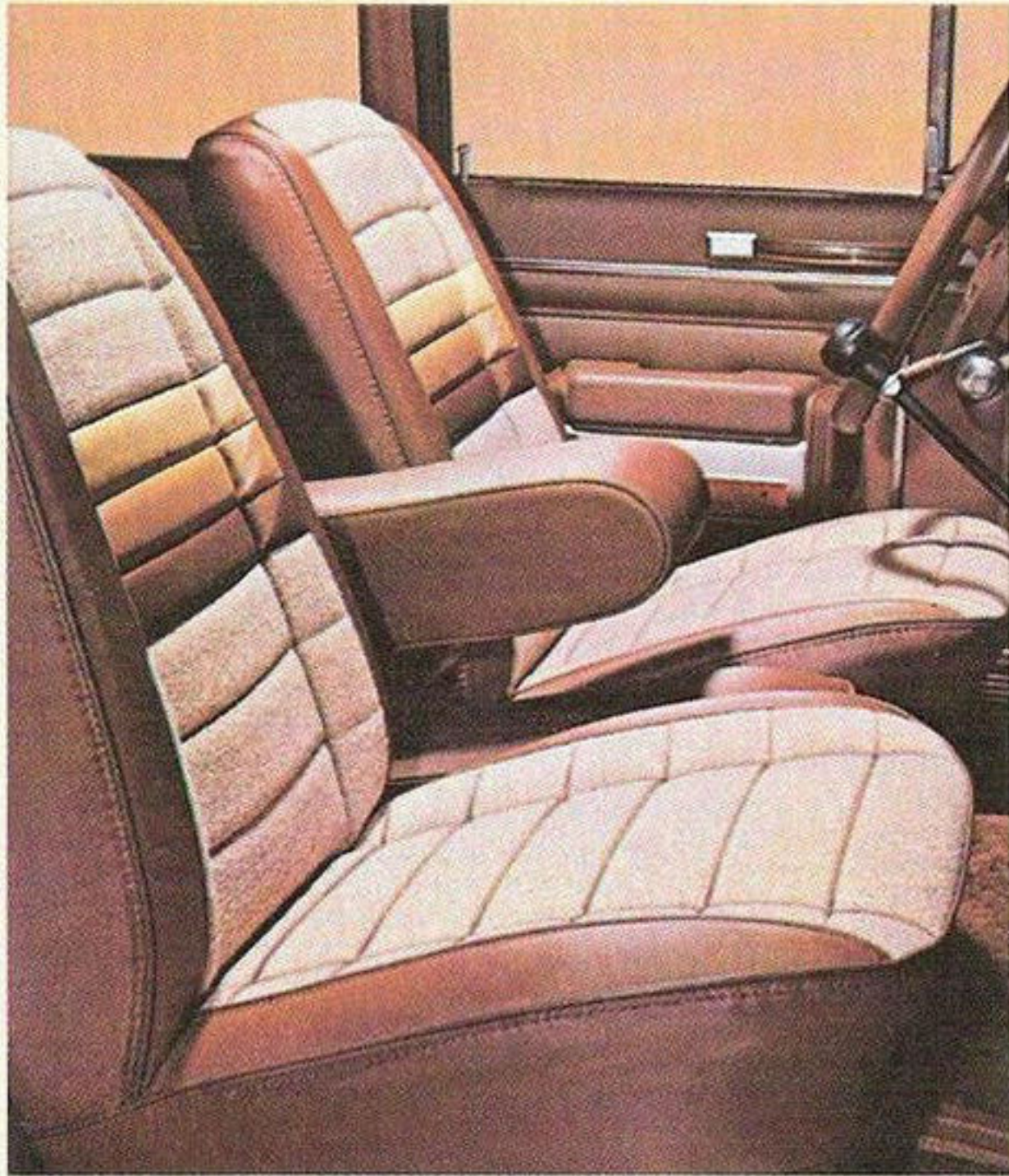


Cherokee Laredo 2-Door (above)

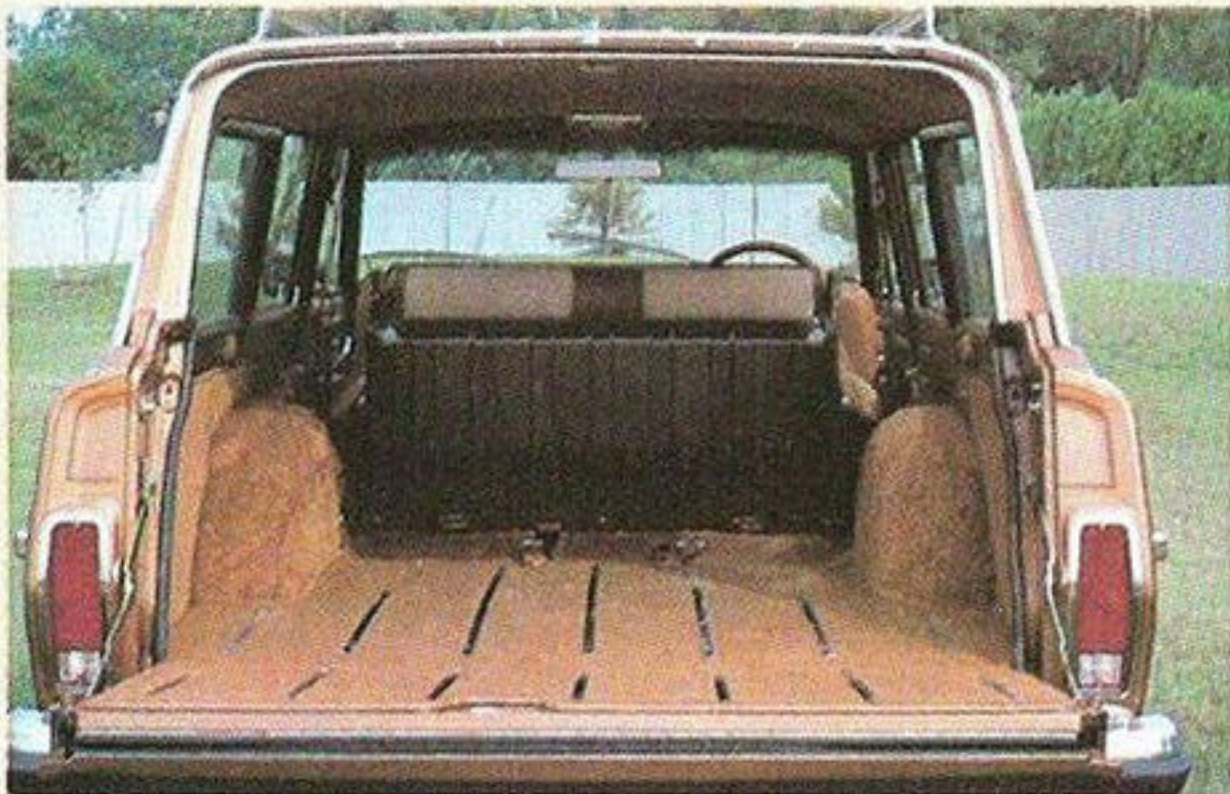
Cherokee Laredo 4-Door (below)



Jeep Cherokee... for serious 4-wheelers.



Western Weave Interior



Folding and Removable Rear Seat



Part Time 4WD Transfer Case



Cherokee Chief 4-Door

Tens of thousands of off-road enthusiasts who take their pastime seriously, take to Jeep Country in the magnificent Jeep Cherokee. It's first choice of so many because it offers so much.

Cherokee truly is a large sport/utility vehicle, with stretch-out room for five big people plus spacious storage behind the rear seat. It offers a solid, integral, full steel roof. It has exceptionally high ground clearance plus excellent load entry height. The built-in (not added on) part-time 4WD system is Jeep tough, Jeep tested—the result of more than 40 years design and engineering experience. That experience pays off in proven durability. Over the last ten years, 95.6% of all Jeep vehicles built are still out working or playing.*

Jeep Cherokee comes equipped to make you feel at home—in the driveway or on the range! Famous Jeep Part-Time four-wheel drive teams with a standard 258 CID Six and 4-speed manual transmission (5-speed optional) to provide solid dependable performance wherever you roam. Power steering and brakes, electronic ignition, front stabilizer and steering damper, fuel tank and transfer case plates are all standard. That's equipment off roaders insist on. If you want more, Cherokee can be very accommodating.

Cherokee Chief

Like its illustrious kin, CJ, Cherokee Chief has become a legend itself among 4WD sport/utility fans. "Chief" is standard on the 4-door Cherokee, and available on the sporty Wide Wheel 2-door. The package includes: Distinctive upper and lower body blackout treatment Special bodyside & tailgate striping • Bright drip moldings • 15" x 7" white styled wheels and P235/75R15 Arriva BSW radials (4-door) • 15" x 8" white styled steel wheels and 10x15 Tracker A/T OWL tires (Wide-Wheel 2-door) • Blackout grille • Sun Valley vinyl front bucket seats and rear bench seat • Matching door and front quarter trim panels • Folding driver seat back (Wide-Wheel 2-door) • Soft Feel Sports Steering Wheel • Color-keyed carpeting • Center armrest (front) • Passenger assist handle • And more

Cherokee Laredo

Jeep's candidate for "best dressed" in the large sports/utility class. It's available on the Wide-Wheel 2-door or the 4-door Cherokee, and includes: Special exterior striping • 15" x 8" chrome styled wheels with black hubs and 10R15 Goodyear Wrangler radials (Wide-Wheel 2-door) • 15" x 7" argent styled wheels with bright trim rings & hubs and P235/75R15 Arriva BSW radials (4-door) • Laredo nameplates • Bright moldings • Luggage rack • Special folding driver and passenger front bucket seats w/center armrest and rear bench seat trimmed in choice of Cara Vinyl or Western Weave Fabric • Carpeted floors, wheelhousings and side panels • Leather-wrapped steering wheel • Passenger assist handle • Special door and instrument panel trim • Convenience Group • Light Group • Visibility Group including Halogen headlamps

For a complete review of Jeep Cherokee standard features and options, interior trim levels and exterior color selection see your Jeep Dealer.

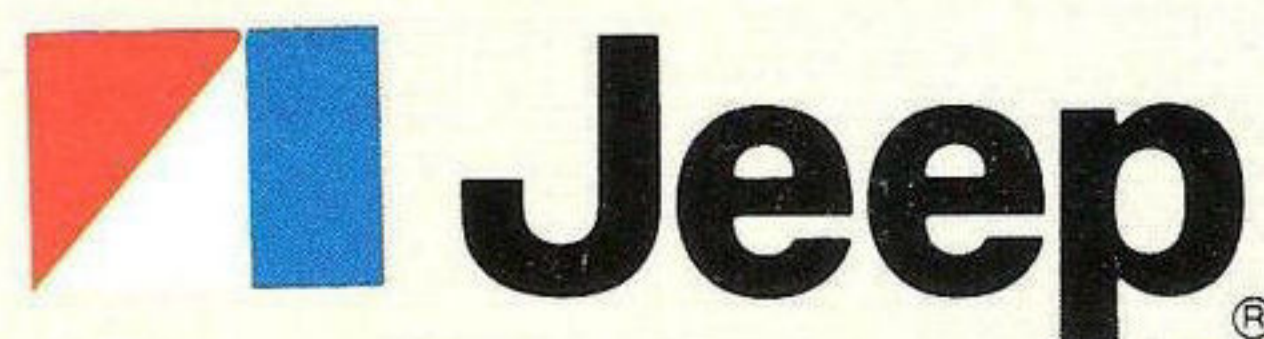
*Based on the the latest R.L. Polk Domestic registration figures.

Jeep Pickup Technical Data

| Dimensions | | | | Specifications | | Engine Availability | | | | |
|---------------------------------------|------------------------------|--------------------------------|------------------------|---|--|---|--------------|--------------------|--------------------------|------------------------|
| (inches unless otherwise noted) | | | | | | | | | | |
| | | | | | | | | | | |
| Exterior | J-10 Short Wheel-base | J-10/20 Long Wheel-base | J-10 Sport-side | Axle, front | Full floating open-end; GAWR: 3200 lbs. (J-10), 3500 lbs. (J-20). | Engine | Carb. | Comp. Ratio | Bore & Stroke | Avail. |
| Length | 194.0 | 206.0 | 194.0 | rear | J-10: Semi floating, GAWR: 3200 lbs. J-20: Full floating, 6800 GVW: GAWR rating 3980 lbs.; 7600 GVW: GAWR rating 4700 lbs.; 8400 GVW: GAWR rating 5500 lbs. | 258 CID Six | 2-bbl. | 8.3:1 | 3.75" x 3.90" | std. J-10 |
| Wheelbase | 118.8 | 130.8 | 118.8 | Brakes | New low-drag power disc front (12" J-10; 12½" J20) Rear drum (11" x 2" J-10; 12" x 2½" J-20) | 360 CID V-8* | 2-bbl. | 8.25:1 | 4.08" x 3.44" | std. J-20 opt. J-10 |
| Overall Width | 78.9 | 78.9 | 78.9 | Clutch, diameter | 11" 111 sq. in. | *Not available in California. | | | | |
| Height | 68.5 | 68.3/70.7 | 69.1 | Fuel tank capacity | 18.2 (approx.) gallons (w/skid plate) | 1982 EPA Mileage Estimates | | | | |
| Tread, front | 63.3/65.3(1) | 63.3/64.9 | 63.3/65.3(1) | 4WD system | Part-time with manual free-wheeling front hubs. Available with automatic transmission. Quadra-Trac available. | 25 Hwy. Est. MPG, (18) EPA Est. MPG (J-10)* | | | | |
| Tread, rear | 63.8/68.3(1) | 63.8/65.9 | 63.8/65.8(1) | Transfer case | 2-speed Part-Time standard with 2.6 low range gear reduction | *Use these figures for comparison. Your results may differ due to driving speed, weather, or trip length. Actual highway mileage will be less. 1982 EPA estimates for California are 24 HWY EST MPG, (18) EPA EST MPG | | | | |
| Overhang (front/rear) | 31.3/43.9 | 31.3/43.9 | 31.3/43.9 | Glass Area | 2883 sq. in. | | | | | |
| Min. ground clearance | 7.7/8.6(1) | 7.7/8.1 | 8.6(1) | Gross vehicle weight | 6200 lbs. (J-10); 6800 lbs. (J-20); optional 7600 lbs. and 8400 lbs. (J-20) | | | | | |
| Tailgate opening width | 57.2 | 57.2 | 48.6 | Springs, front | 5 leaf 215 lbs./in. rate std. (J-10) 7 leaf 260 lbs./in. rate std. (J-20) | | | | | |
| Turning diameter, Curb to curb (feet) | 40.6/41.2(1) | 44.5 | 41.2(1) | Springs, rear | 5 leaf 165 lbs./in. rate std. 119" WB J-10; 4 leaf 245 lbs./in. rate std. 131" WB J-10; 2 leaf tapered 340 lbs./rate std. J-20 | | | | | |
| Interior | | | | Steering | Variable ratio power | | | | | |
| Head room | 40.2 | 40.2 | 40.2 | Transmission | Fully synchronized 4-speed(2) manual floor shift standard; column mounted automatic transmission optional and 5-speed manual | | | | | |
| Leg room | 41.6 | 41.6 | 41.6 | Tires | Four H78-15 black side wall polyester Cruiser 78 (unbelted) std. J-10; Five 8.75-16.5 black side wall polyester Cushion Miler RV std. J-20; Temporary use polyspare (J-10) | | | | | |
| Hip room | 60.5 | 60.5 | 60.5 | (2) J-20 4-speed has creeper first gear | | | | | | |
| Shoulder room | 58.3 | 58.3 | 58.3 | | | | | | | |
| Cargo floor length | 83.6 | 95.6 | 84.5 | | | | | | | |
| Cargo box volume (cu. ft.) | 67 | 76.6 | 38.9 | | | | | | | |
| (1) Wide wheel model | | | | | | | | | | |

Vehicles illustrated in this brochure may vary slightly from actual production models. Consult your Jeep Dealer for recent product changes. This folder does not constitute an offer or commitment to sell. In order that product improvements may be made at any time, specifications and other data are subject to change without notice. Jeep vehicles incorporate thousands of different components produced by Jeep Corporation, affiliated companies and various independent suppliers. From time to time during the manufacturing process, it may be necessary to produce Jeep vehicles with different components or differently sourced components than initially scheduled. All components must meet the standards of Jeep Corporation and will provide the performance expected from Jeep vehicles. Jeep vehicles meet or exceed all applicable Federal Motor Vehicle Safety Standards at time of manufacture. Some of the Jeep vehicles shown and described in this brochure have optional equipment. Jeep®, Laredo, Pioneer, Quadra-Trac® and Jeep Store are trademarks of Jeep Corporation. In Canada, American Motors (Canada) Inc. is a licensed user.® Reg TM.

**Who knows more
about 4-wheel drive?**



**Jeep Corporation is a subsidiary
of American Motors Corporation**