

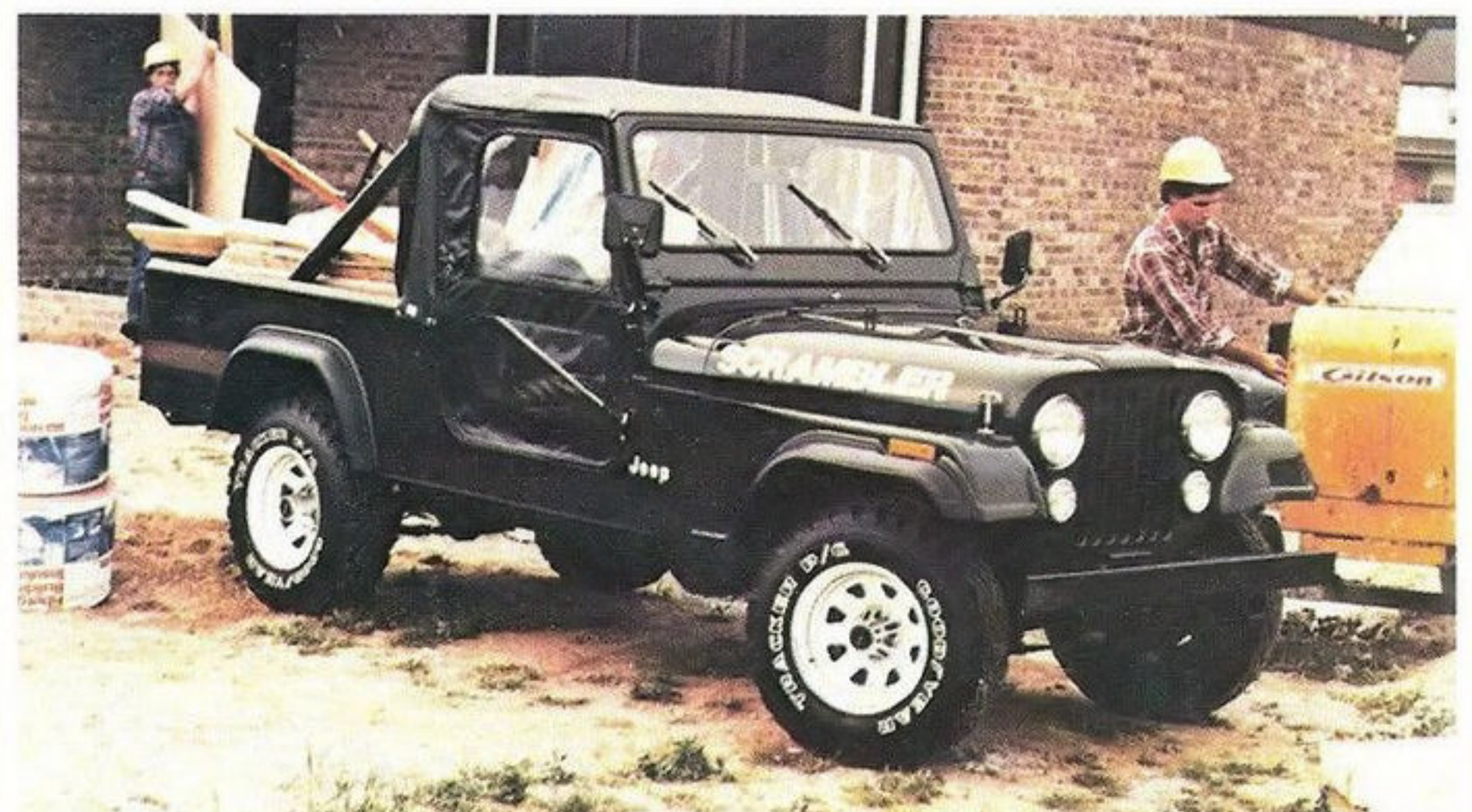
1982 Jeep Scrambler



Scrambler SR Sport



Scrambler SL Sport



Scrambler Base



Scrambler SL Sport (above)

Scrambler SR Sport (below)



Jeep Scrambler... America's import pickup fighter.



SR Sport Highback Bucket Interior



Rear Swing Away Spare Tire



Wood Side Rails



5-speed Transmission

It's America's first small 4x4 pickup, yet it's not a bit like any other small pickup. Because Scrambler is made by Jeep Corporation (Who in the world knows more about 4WD?), which is your assurance that it's tough, rugged and reliable.

There are a lot of little pickups to look at. Just remember there's only one Scrambler. And it's fun loving, sun loving, cargo toting 4WD charmer from Jeep®.

Scrambler is a remarkably complete small pickup ready for action in Jeep Country with standard part-time four-wheel drive that includes a 2-speed Dana transfer case and free-wheeling front hubs. Other tough off-road features include fuel tank and transfer case skid plate, fold-down windshield, electronic ignition, hefty 3" roll bars, wheelip extensions, front stabilizer and steering damper, a drop down tailgate, with available swing-away rear spare carrier.

Scrambler SR Sport

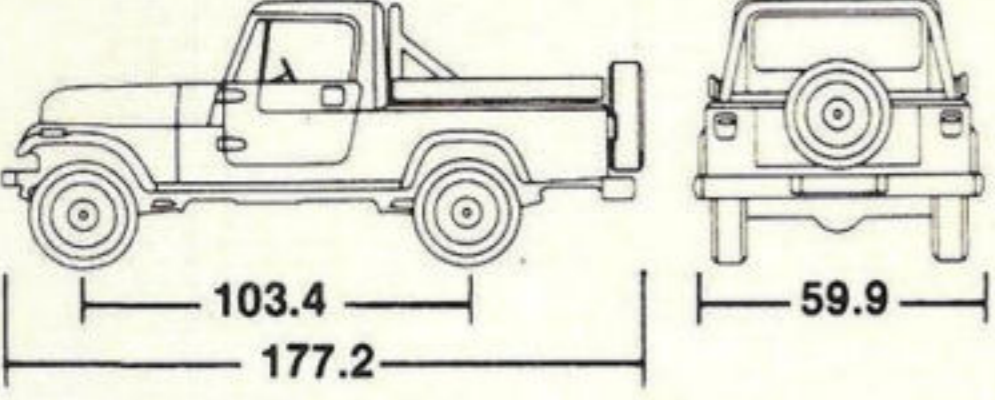
The SR Sport package adds a bold lively touch to the tough Scrambler image. It includes all of the base Scrambler equipment, plus: Special "Scrambler" hood lettering and exterior graphics in gradations of yellow, blue or red depending on exterior color selection • 15" x 7" white styled steel wheels • L78 x 15 Goodyear Tracker P/G OWL tires • High back forward pivoting bucket seats trimmed in Blue, Black or Nutmeg denim-look vinyl • Decor Group: rocker panel protection molding, sports steering wheel, front frame cover, Instrument panel overlay • Convenience Group: 8" day/night mirror, under hood light, courtesy lights • Spare wheel lock.

Scrambler SL Sport

Scrambler SL Sport is perhaps the most distinctive small pickup available in the world with all of the base Scrambler equipment plus: Half-cab hardtop or soft-top • Special "Scrambler" hood lettering in Silver & Gray or Nutmeg & Bronze with selected exterior colors • Beltline and door inset double pin stripe • Chrome plated 15" x 7" styled steel wheels (w/clear urethane top coat) • Die cast chrome plated hub covers • P235/75R15 Wrangler OWL radial tires • Additional chrome trim: front bumper, rear step bumper, grille panel (w/pin stripe), mirror heads & arms, footman loops • Special high back forward pivoting bucket seats in Black Cara vinyl with Light Gray accent strap or Nutmeg with Honey accent strap • Black leather-wrapped steering wheel and passenger assist bar • Instrument panel in Black or Nutmeg with special pin stripe • Black or Nutmeg indoor/outdoor carpeting • Special console and door trim panels • Convenience Group (see SR Sport Pkg.) • Tachometer & clock • Black rocker moldings • Hood insulation • Heavy duty shocks • Front frame cover • Spare wheel lock.

For a complete review of Jeep Scrambler standard features and options, interior trim levels and exterior color selection see your Jeep Dealer.

Jeep Scrambler Technical Data

Dimensions	Specifications	Engine Availability															
<p>(inches unless otherwise noted)</p>  <p>Exterior</p> <p>Length 177.2 Wheelbase 103.4 Maximum Body Width 59.9</p> <p>Height 69.2 Tread (front/rear) 55.8/55.1 Overhang (front/rear) 23.5/50.3 Min. ground clearance 7.6 Tailgate opening width 34.5 Turning diameter, Curb to curb (feet) 37.6</p> <p>Interior</p> <p>Head room, soft top 40.9 hardtop 39.9 Leg room, front (max.) 39.1 Hip room 53.8 Shoulder room 53.8 Cargo volume (cu. ft.) 30.4 Cargo box length, floor 61.5 Cargo box length, beltline 58.5 Cargo box width, beltline 55.8 Cargo box height 16.4 Rear opening width 34.5</p>	<p>Axle, front Full floating open-end; GAWR: 2200 lbs.</p> <p>Axle, rear GAWR: 2700 lbs.</p> <p>Brakes Low drag manual front disc/ rear drum (Power assist optional)</p> <p>Clutch, diameter 9.12 (4 cyl.) 10.5 (6 cyl.)</p> <p>Clutch, area 71.78 (4 cyl.) 106.75 (6 cyl.)</p> <p>Fuel tank capacity 15 (approx.) gallons (w/skid plate) std. 20 gal (approx.) opt</p> <p>4WD system Part-time, with lockable manual free-wheeling front hubs. Available with automatic transmission</p> <p>Transfer case 2-speed Part-Time with 2.62 low range gear reduction</p> <p>Glass area 768 sq. in. without top</p> <p>Gross vehicle weight 4150 lbs.</p> <p>Springs, front 4 leaf 170 lbs./in. rate std.</p> <p>Springs, rear 4 leaf 185 lbs./in. rate std.</p> <p>Steering Recirculating ball standard with 24:1 low ratio; variable ratio power optional</p> <p>Transmission Fully synchronized 4-speed manual floor shift standard; column mounted automatic transmission with lock-up torque converter available with Six. 5-speed manual with overdrive avail.</p> <p>Tires Five G78 x 15 black side wall suburbanite mud/snow tires (unbelted) standard</p> <p>Wheels Five 15 x 5,5-bolt, 5.5" circle standard; optional wheels include 15 x 7 spoked steel 5-bolt on a 5.5" circle</p>	<table border="1"> <thead> <tr> <th>Engine</th> <th>Carb.</th> <th>Comp. Ratio</th> <th>Bore & Stroke</th> <th>Avail.</th> </tr> </thead> <tbody> <tr> <td>151 CID Four</td> <td>2-bbl.</td> <td>8.2:1</td> <td>4.00" x 3.00"</td> <td>std.</td> </tr> <tr> <td>258 CID Six</td> <td>2-bbl.</td> <td>8.3:1</td> <td>3.75" x 3.90"</td> <td>opt.</td> </tr> </tbody> </table> <p>1982 EPA Mileage Estimates</p> <p>28 Hwy. Est. MPG, (23) EPA Est. MPG *</p> <p>*Use these figures for comparison. Your results may differ due to driving speed, weather, or trip length. Actual highway mileage will be less. 1982 EPA estimates for California are 28 HWY EST MPG, (21) EPA EST MPG. Mileage figures are for vehicles equipped with 151 CID 4-cylinder engine and optional 5-speed transmission.</p>	Engine	Carb.	Comp. Ratio	Bore & Stroke	Avail.	151 CID Four	2-bbl.	8.2:1	4.00" x 3.00"	std.	258 CID Six	2-bbl.	8.3:1	3.75" x 3.90"	opt.
Engine	Carb.	Comp. Ratio	Bore & Stroke	Avail.													
151 CID Four	2-bbl.	8.2:1	4.00" x 3.00"	std.													
258 CID Six	2-bbl.	8.3:1	3.75" x 3.90"	opt.													

Vehicles illustrated in this brochure may vary slightly from actual production models. Consult your Jeep Dealer for recent product changes. This folder does not constitute an offer or commitment to sell. In order that product improvements may be made at any time, specifications and other data are subject to change without notice. Jeep vehicles incorporate thousands of different components produced by Jeep Corporation, affiliated companies and various independent suppliers. From time to time during the manufacturing process, it may be necessary to produce Jeep vehicles with different components or differently sourced components than initially scheduled. All components must meet the standards of Jeep Corporation and will provide the performance expected from Jeep vehicles. Jeep vehicles meet or exceed all applicable Federal Motor Vehicle Safety Standards at time of manufacture. Some of the Jeep vehicles shown and described in this brochure have optional equipment. Jeep®, Scrambler, Jeep Store and Jeep CJ Radiator grill design are trademarks of Jeep Corporation. In Canada, American Motors (Canada) Inc. is a licensed user.® Reg TM.

**Who knows more
about 4-wheel drive?**



**Jeep Corporation is a subsidiary
of American Motors Corporation**