
1983 American Motors



The Tough Americans

Concord · Spirit



Concord. Affordable Luxury.

Concord...luxury, economy* and value in one affordable compact.

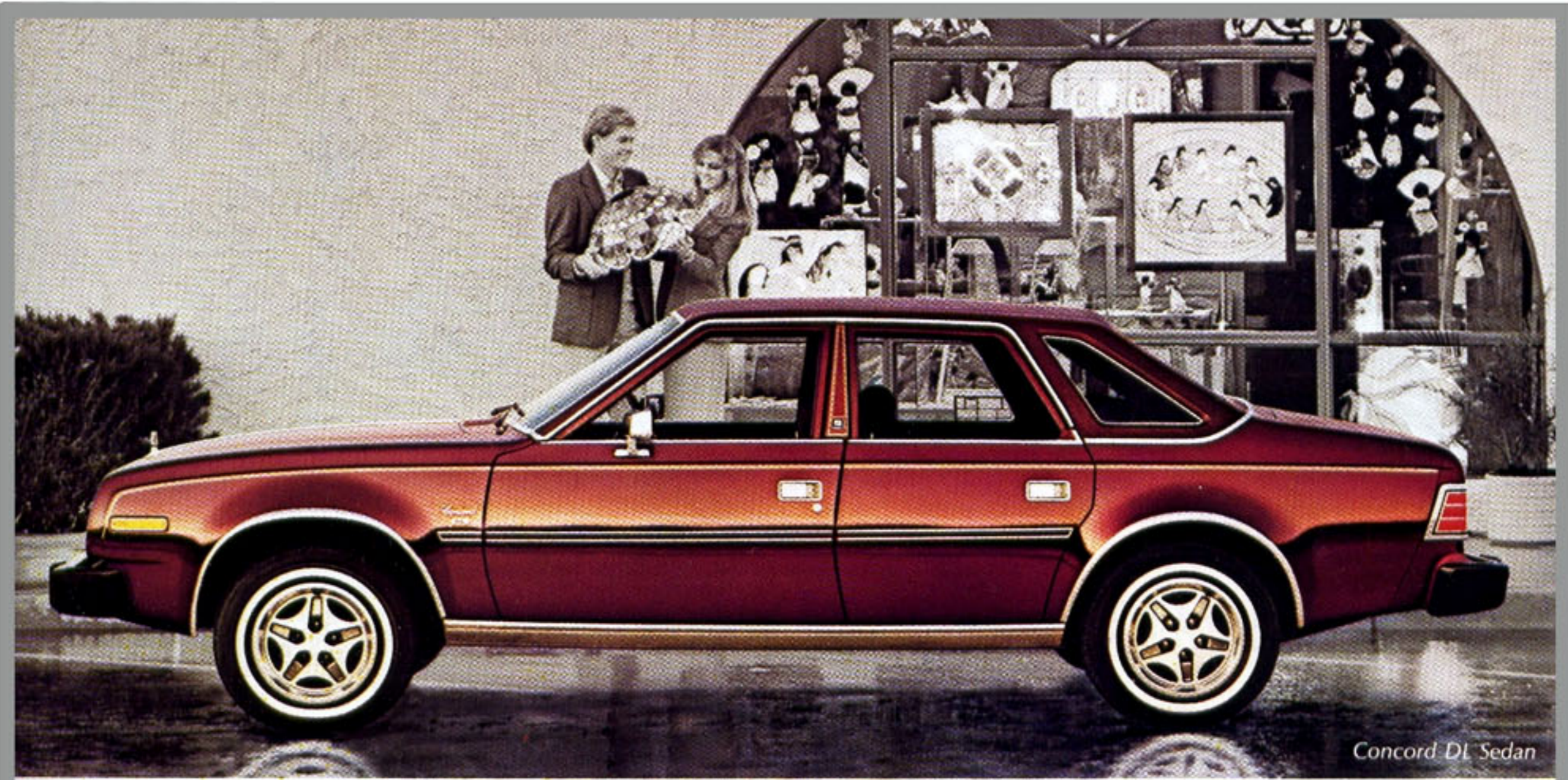
The premium level of exterior trim on Concord DL is evident in the wire wheel covers, in the formal vinyl roof and distinctive opera windows of the Sedan, and in the woodgrain bodyside treatment of the Wagon.

Inside, the luxury is enhanced by seating for six in deluxe vinyl or sculptured Castilian cloth. Extra quiet insulation, reclining front seats, an electronic quartz digital clock and other thoughtful standards make Concord DL travel a pleasure.

The 6-cyl. engine and optional 3-speed automatic transmission provide enthusiastic performance and excellent fuel efficiency.* And a computer refined suspension gives a smooth, stable ride.

For the ultimate in passenger and cargo carrying ability, there's a Limited Wagon with genuine leather seating, 18-oz. carpeting, and more.

For a complete review of Concord/Spirit standard features and popular options see your American Motors Dealer.



Concord DL Sedan



Concord DL Wagon

Spirit G.T.:

The new Spirit G.T. is a sporty four-seater with performance and appearance features to match its 6-cylinder power plant. And all at a price that's downright embarrassing to the competition. In addition to the generous Spirit standard features list, Spirit G.T. includes:

- Tachometer/Gauge Package including sweep second hand rally clock
- Leather-wrapped Sport steering wheel

- Turbocast II aluminum wheels
- Handling package
- Halogen fog lamps
- Blackout treatment—bumpers (with front and rear nerf strips); grille headlamp bezels, windshield and rear window surround moldings; driprail, beltline and door pillar moldings
- Dual, remote control, outside rearview sport mirrors
- Center console with armrest
- G.T. medallions on front fenders
- Arriva BSW steel radial tires



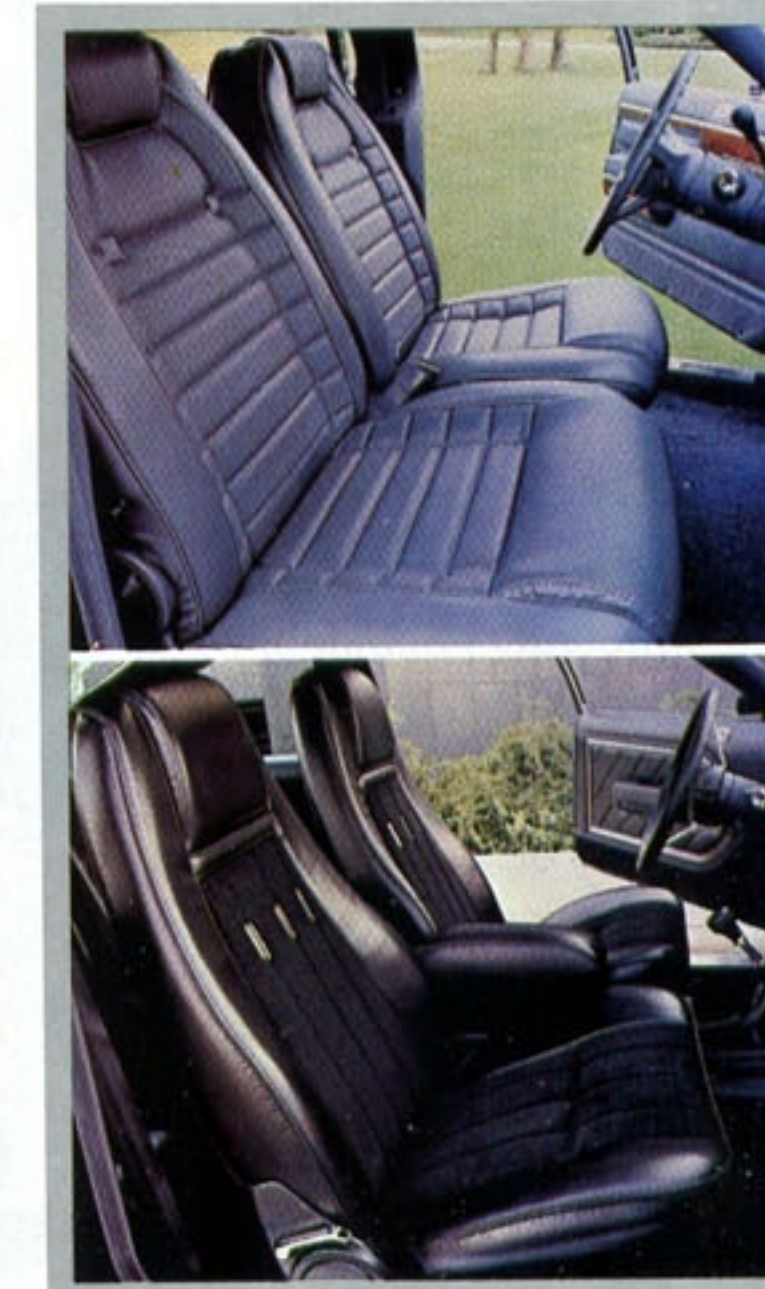
Interiors.

American Motors goes to great lengths to be certain that the interiors of Concord and Spirit models are neatly tailored, attractively appointed and pleasingly color-keyed.

After all, we spend most of our time inside the car. So it follows that a pleasant interior environment will contribute greatly to overall satisfaction.

To that end, American Motors provides a wide selection of trim levels, upholstery materials and floor coverings in a broad spectrum of colors to help you personalize the American Motors vehicle of your choice.

Some of the striking interior combinations are pictured here.



1. Concord DL Interior in Deluxe Grain vinyl
2. Spirit G.T. Interior in Coventry Check fabric

Spirit. Sporty Styling. 6-cylinder Pep.

The American Motors Spirit has about the same overall dimensions as other popular sporty subcompacts, and offers excellent EPA Estimates*, but the similarity comes to an abrupt halt from there on.

Spirit's long wheelbase, wide track, and computer refined suspension provide unexpected riding comfort in a small car.

Then there's the matter of Spirit's exhilarating performance, a product of the standard 4.2 liter 6-cylinder engine and 4-spd. manual transmission (5-spd. manual or auto. available).

Spirit's sporty styling is as functional as it is appealing. The wide opening liftback opens on an astonishing amount of storage space with the rear seat folded. Or, with the seat up, there's generous seating for four plus gear.

Concord Trailer Towing.

When properly equipped, American Motors Concord models are excellent vehicles for light duty trailering applications such as boats or pop-up campers.

Light-duty trailer towing option: Includes bumper mounted hitch; five connector wiring harness and vehicle-to-trailer wiring kit. Recommended Trailer Towing equipment:

- Automatic transmission
- 2.73:1 rear axle ratio
- Heavy-duty battery
- Heavy-duty cooling
- Automatic load leveler suspension



Spirit DL Liftback



Concord Limited Wagon

Specifications

Concord & Spirit:

Standard engine—in line OHV 6 cylinder; 4.2 liters (258 CID) displacement; 3.75 x 3.90 bore and stroke; 9.2:1 compression ratio; 2-barrel carburetion; 7 main bearings; hydraulic valve lifters

Carburetion—two-venturi, downdraft design; replaceable fuel filter; electrically heated automatic choke

Ignition—electronic ignition system with fuel feedback and knock sensor to improve fuel economy.

Electrical—Maintenance-free battery, 54-330 cold cranking amps; alternator, 56 amps

Transmission—fully synchronized, 4-speed manual with floor shift

Axle ratios—

Concord—2.35 with 4-speed or 5-speed manual trans.

2.21 with column mounted auto. trans. (2.73 high alt.)

2.73 for trailering applications with column mounted auto. trans.

Spirit—2.35 with 4-speed or 5-speed manual trans.

2.21 with column or floor mounted automatic trans. (2.73 high alt.)

Steering—recirculating ball type, manual (power assist avail.)

Brakes—

Service—manual, self-adjusting front disc/rear drum. front discs incorporate low drag feature

Parking—foot pedal operated; inside release; operates on rear service brakes; parking brake warning light

Suspension—

front—independent strut type with steel coil springs surrounding telescoping shock absorber; polyethylene upper ball joint for reduced steering effort, greater suspension dampening

rear—live axle on computer selected leaf springs and telescoping shock absorbers tailored to specific vehicle weight

Curb weight—Concord Sedan: 2902 lbs.
Concord Wagon: 2947 lbs.
Spirit: 2809 lbs.

Engine Availability

	CONCORD SEDAN	CONCORD WAGON	SPIRIT
2.5 4-cyl. 4.00 x 3.00 bore and stroke; 8.2:1 compression ratio; 2-bar carb.; 5 main bearings; hydraulic valve lifters	NA	NA	NA
4.2L 6-cyl., 3.75 x 3.90 bore and stroke; 9.2:1 compression ratio; 2-bar carb.; 7 main bearings; hydraulic valve lifters	S	S	S

S = Standard NA = Not Available

1983 EPA Estimates

	49 States		California	
	EST MPG	HWY MPG	EST MPG	HWY MPG
Concord 6-cyl. 4-speed	21	30	21	30
5-speed	21	33	21	32
Automatic	21	29	20	29
Spirit 6-cyl. 4-speed	21	32	21	31
5-speed	21	34	21	33
Automatic	21	30	21	30

EPA ratings vary by engine and transmission selection. Use EPA est. MPG for comparison. Your mileage may vary with speed, weather, trip length. Actual highway mileage will probably be less.

Certain equipment items and features illustrated or described in this catalog, are optional at extra cost unless otherwise specified. Certain equipment items and features may not be available for all models. This brochure contains information correct at the time of printing. American Motors, whose policy is one of continuous improvement, reserves the right to discontinue or change specifications, models, equipment or price at any time without incurring obligation. **AMERICAN MOTORS, SPIRIT, CONCORD, SX/4, EAGLE, BUYER PROTECTION PLAN, SERVICE SECURITY PLAN and NO RUST-THRU** are trademarks of American Motors Corporation. **ZIEBART** is a registered trademark of Ziebart International Corporation. American Motors automobiles incorporate thousands of different components produced by American Motors Corporation, affiliated companies and various independent suppliers. From time to time during the manufacturing process, it may be necessary to produce American Motors automobiles with different components or differently sourced components than initially scheduled. All components must meet the standards of American Motors Corporation and will provide the performance expected from American Motors automobiles.

1983 American Motors Buyer Protection Plan®

We're proud of our well-respected reputation as the car company who cares about you after you buy a new automobile from us. That's why all Concord and Spirit models are backed by the exclusive American Motors Buyer Protection Plan. Related features include:

- Full 12 Month, 12,000 Mile (20,000 km) Warranty Coverage
- Service Adjustments
- Warranty Service for Owners Who Move or Travel
- Warranty Coverage for Subsequent Owners
- A Tire Policy
- New Automobile Pre-Delivery Service
- A Loaner Car
- Special Trip Interruption Protection
- Extended Powertrain Protection Limited Warranty for an Additional 12 months or 12,000 Miles (20,000 km)

Ziebart® Factory Rust Protection and Full Five (5) Year Perforation From Corrosion Warranty

The 1983 American Motors Concord and Spirit models also feature Ziebart® Factory Rust Protection. American Motors gives you a full five year warranty which covers perforation due to corrosion for five years from the date of delivery or first use, whichever occurs first.

See your American Motors dealer for complete details of the Buyer Protection Plan and Ziebart® Factory Rust Protection program.

